

HAJIR AL KHUSAIBI
GSAPP, MS.AAD '20
FINAL PORTFOLIO



HAJIR AL KHUSAIBI
GSAPP, MS.AAD '20
FINAL PORTFOLIO

CONTENTS

01 AGGREGATED LIVING

(JOINT PROJECT/ H. ALKHUSAIBI, H. CHOI, B. LEE , MS.AAD '20)

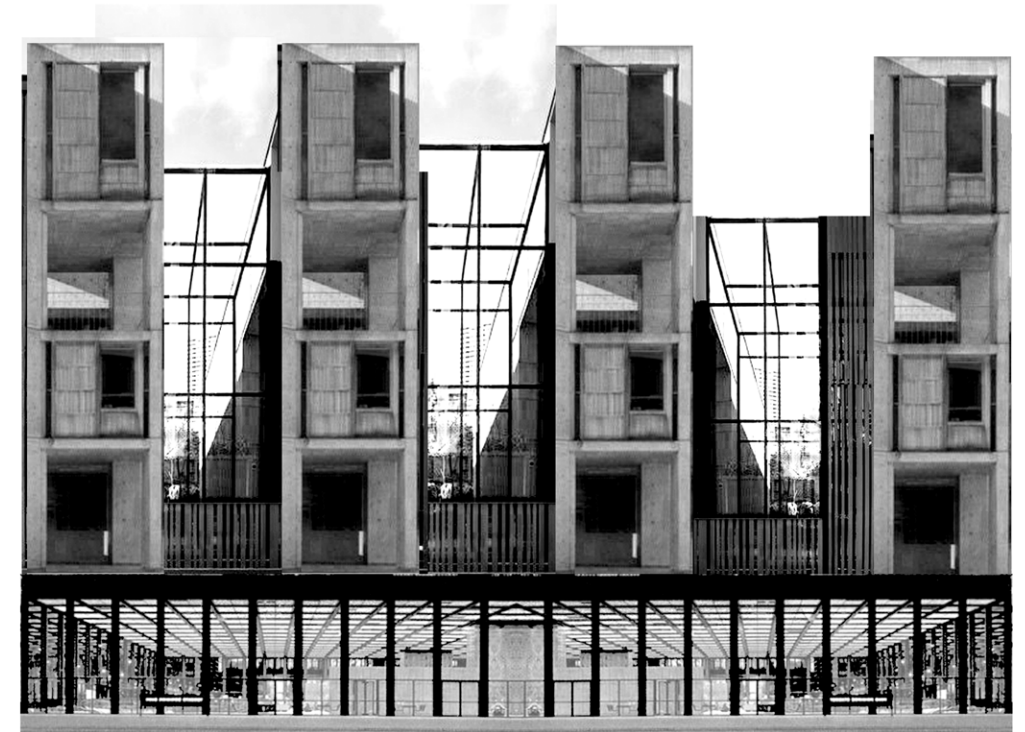
19 'TRACES'

(H. ALKHUSAIBI)

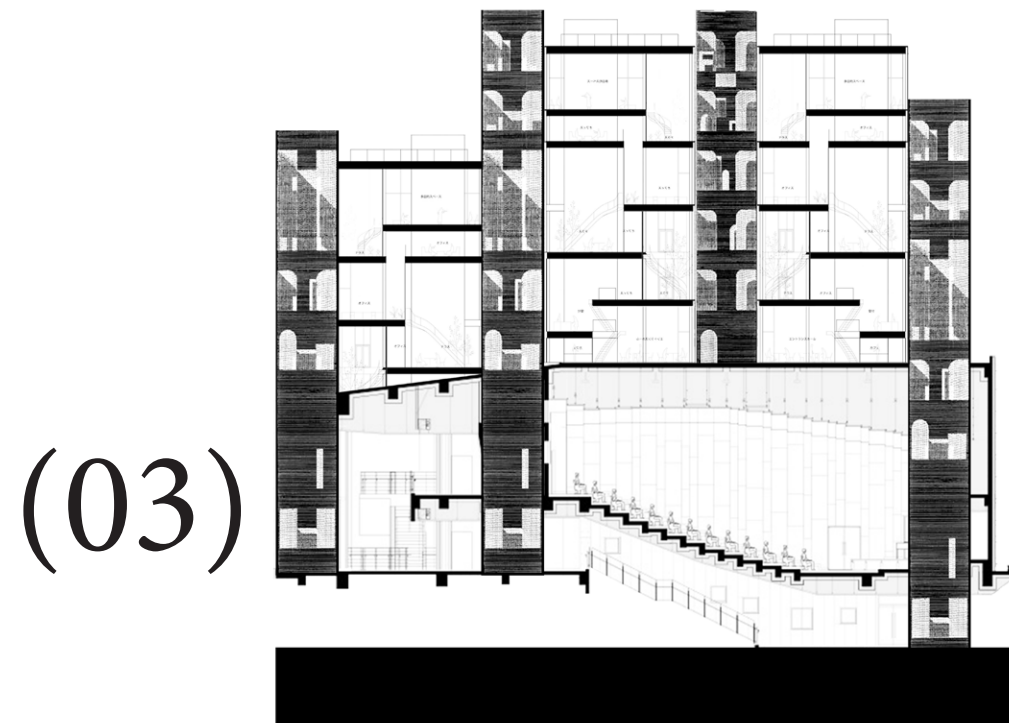
55 THE JUNCTION

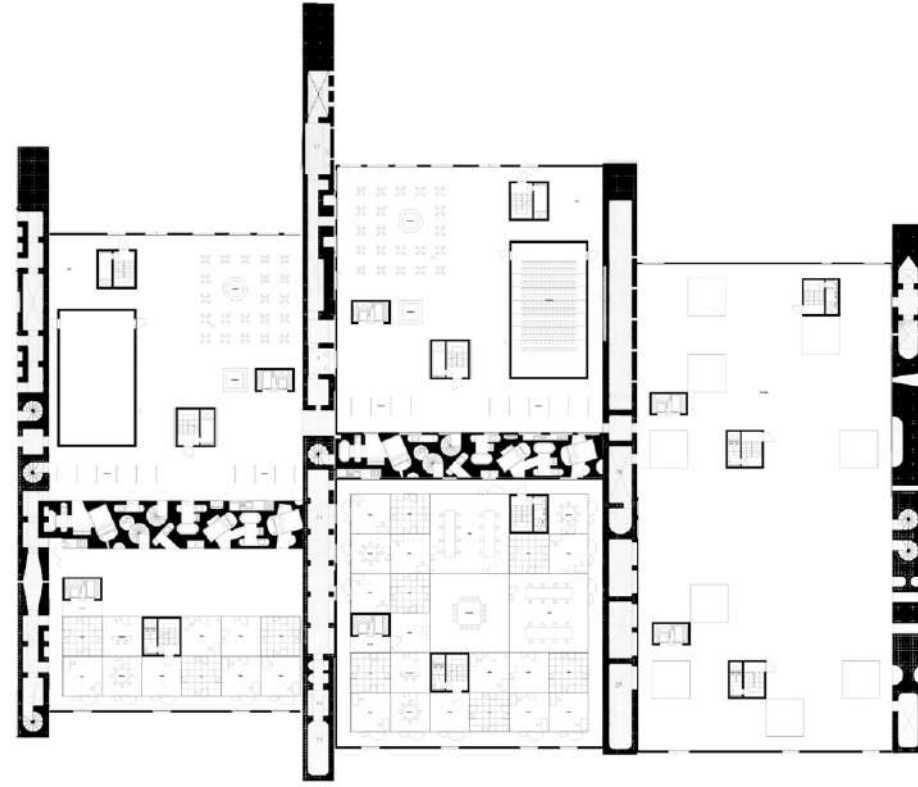
(JOINT PROJECT/ H. ALKHUSAIBI, MS.AAD '20, A. BRAUN, MS.RED '20)

AGGREGATED LIVING

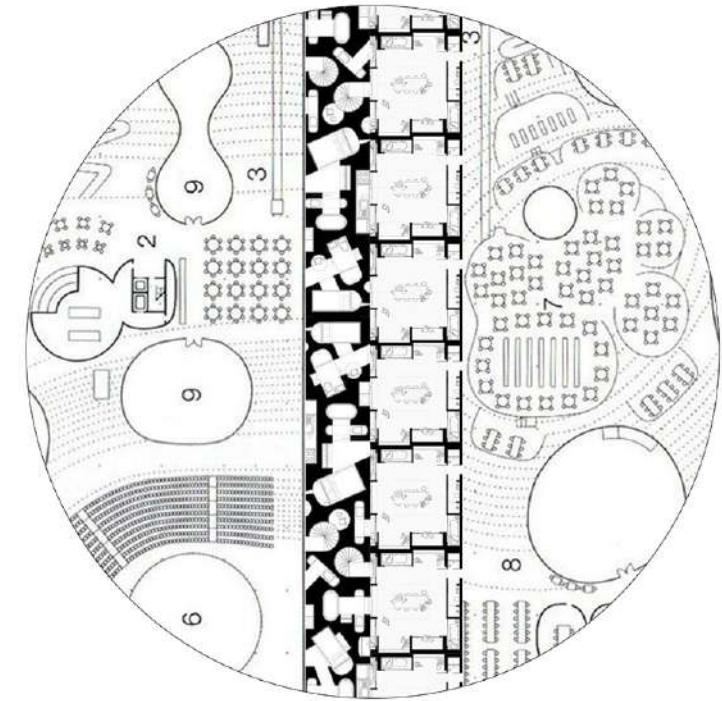


ELEVATION
FACING 10TH AVE.
SCALE: 1/16" = 1'





PLAN
 CORNER OF 23RD ST AND 10TH AVE.
 SCALE: 1/16" = 1'



DETAIL
 CORNER OF 23RD ST AND 10TH AVE.
 SCALE: 1/8" = 1'



40.7465° N, 74.0014°

(07)

◀ HIGHLINE

10TH AVE ▶



40.7465° N, 74.0014°



01



40.7465° N, 74.0014°

(11)

02

X 4



(13)

X 4



03

(15)

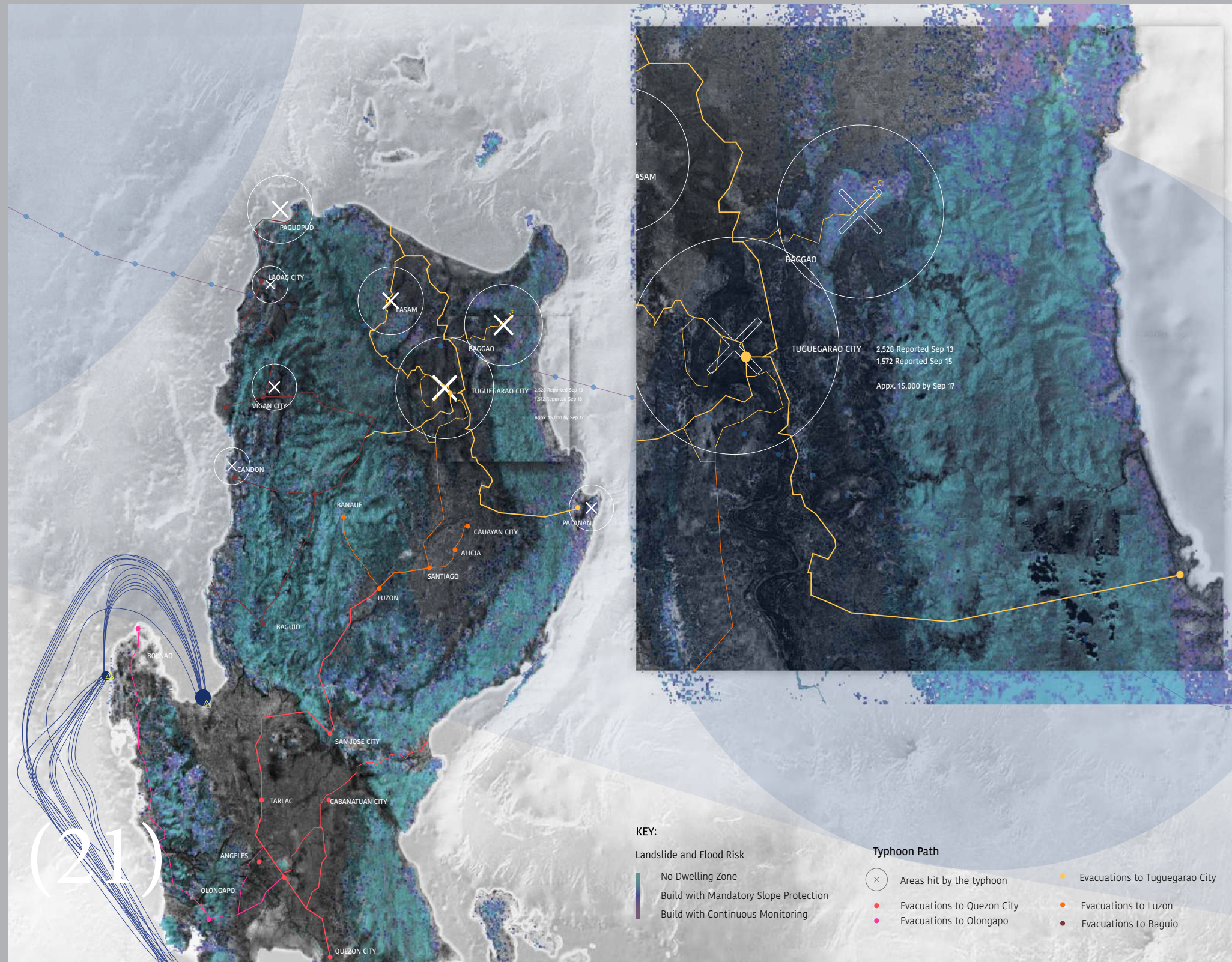
04

X 4

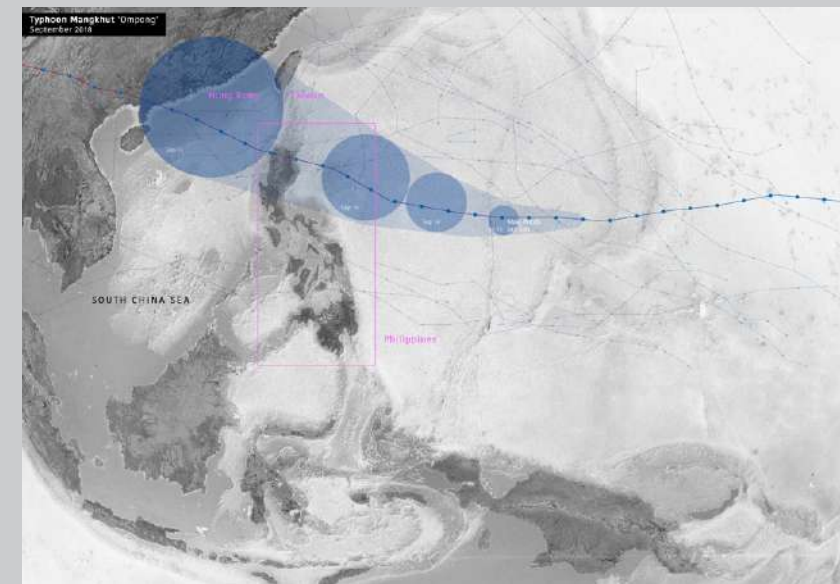
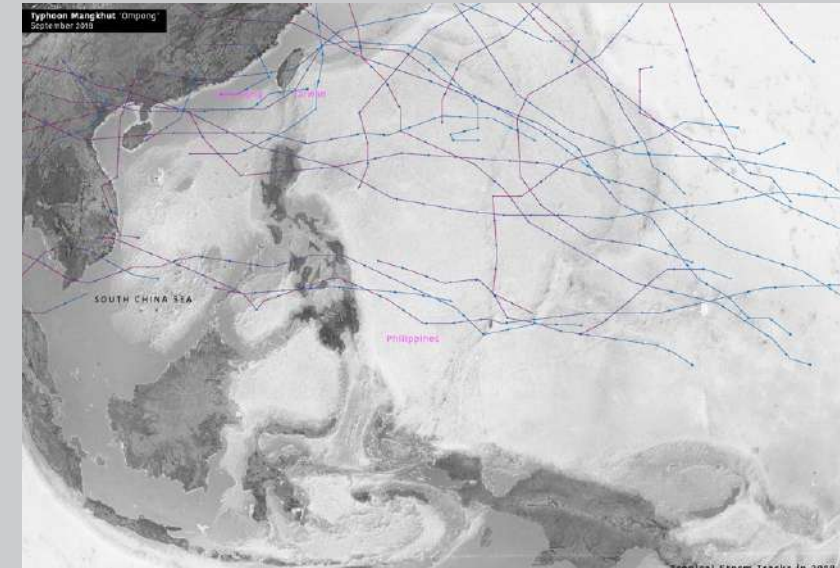
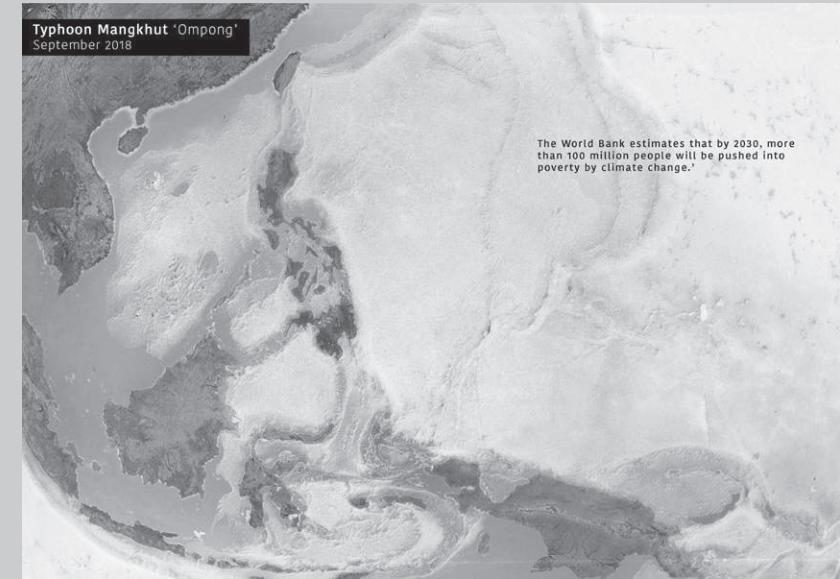


'TRACES'

(19)



33.9549° S, 18.4395° E



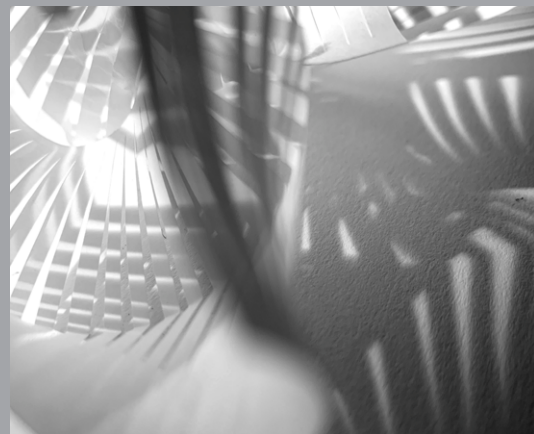
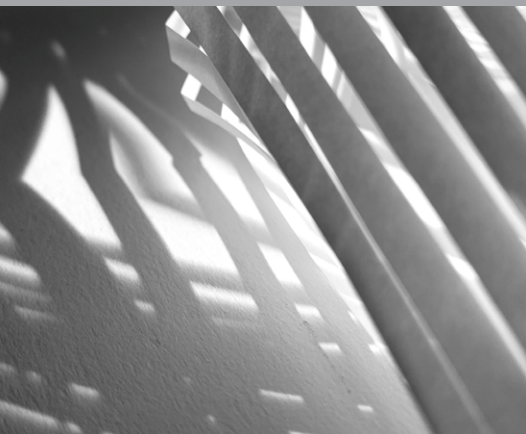
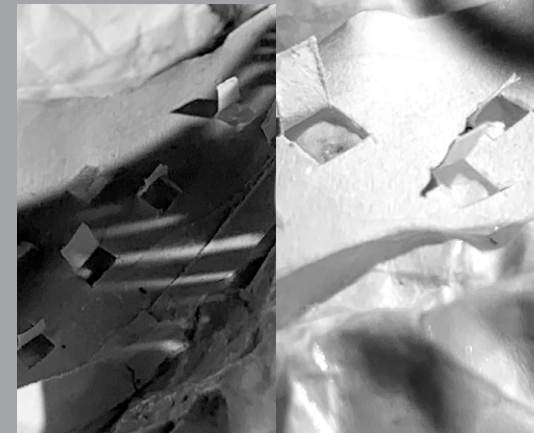
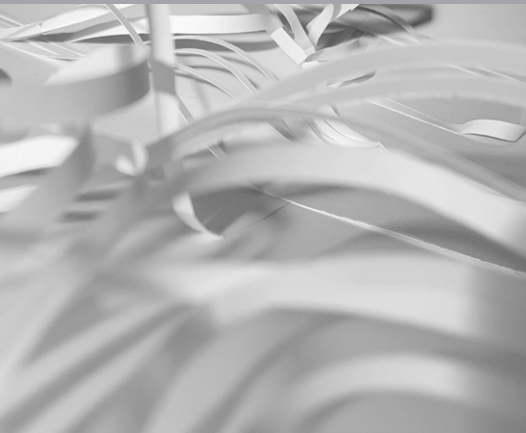
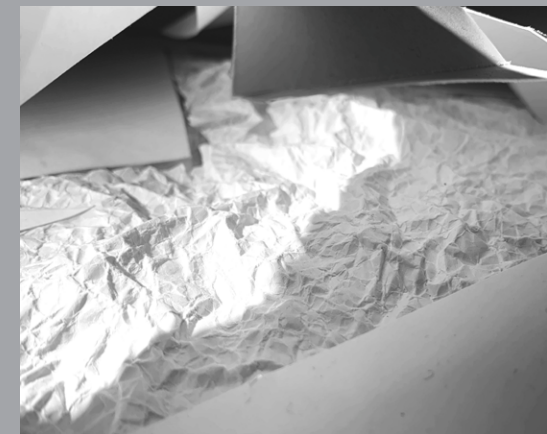
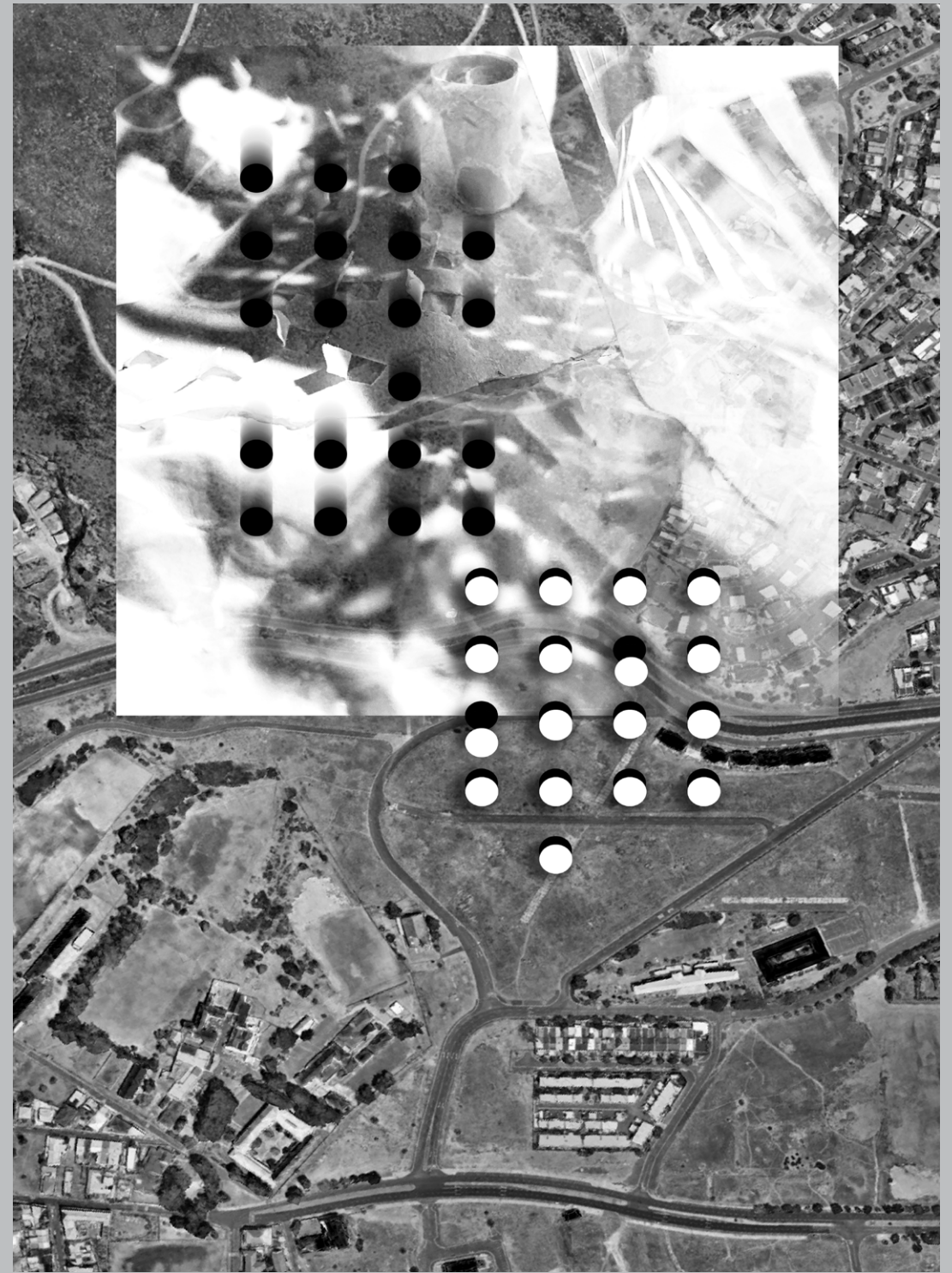


PHOTO & PAPER
MODEL EXPLORATIONS

Cutting Off,
Incise,
Suffocating,
Saturate,
Reposition,
& Infiltrate

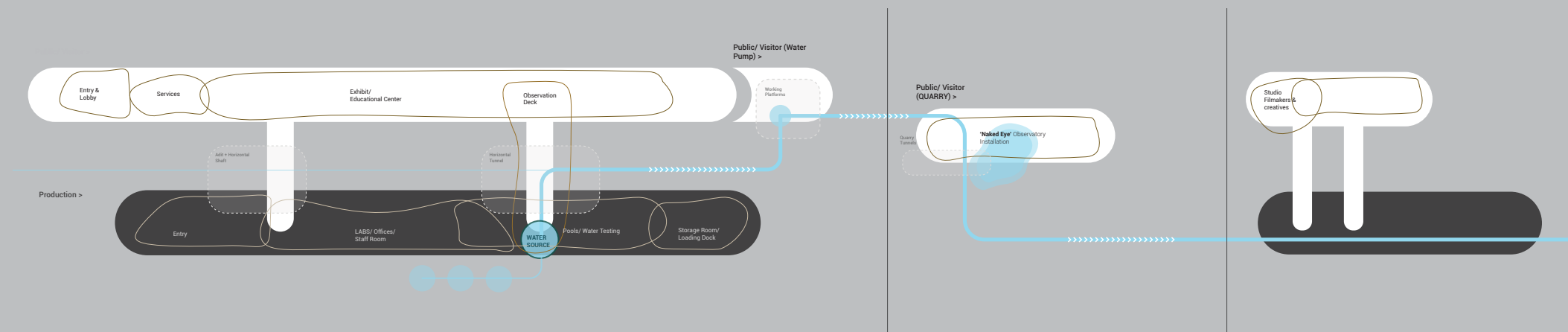




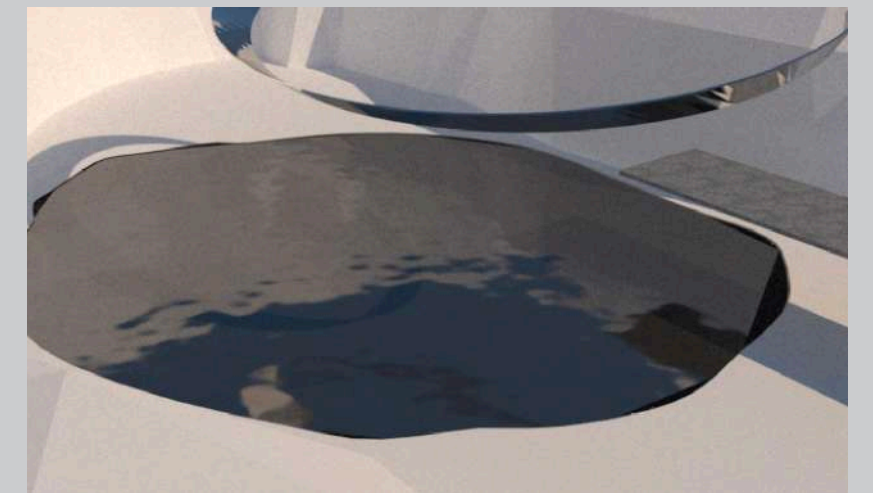
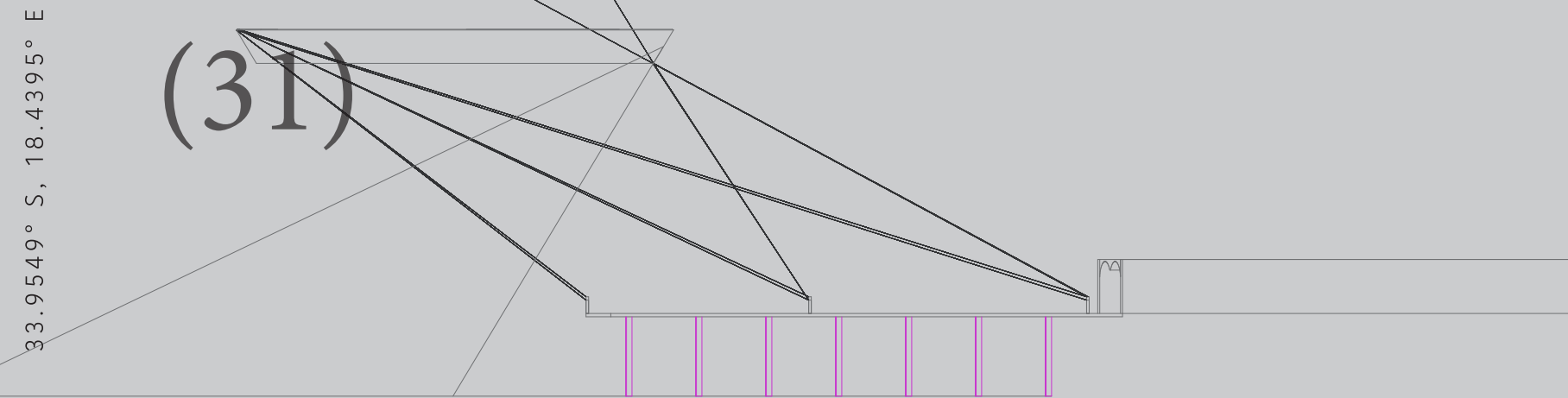
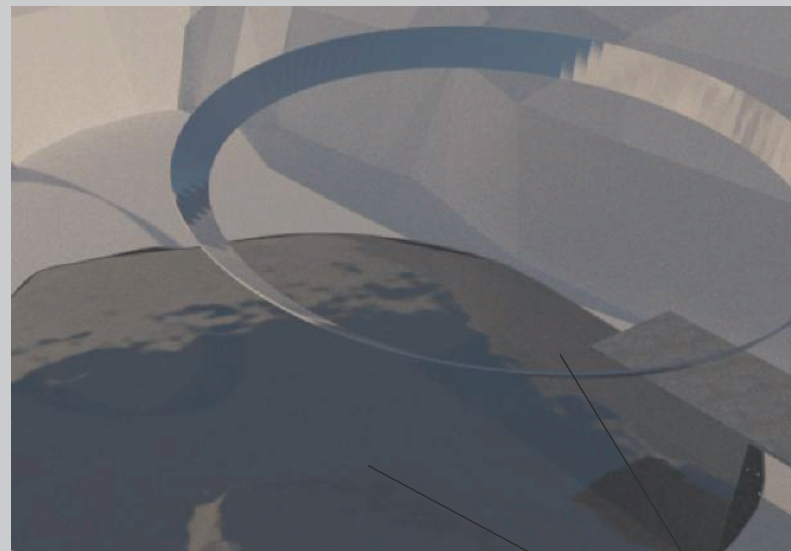
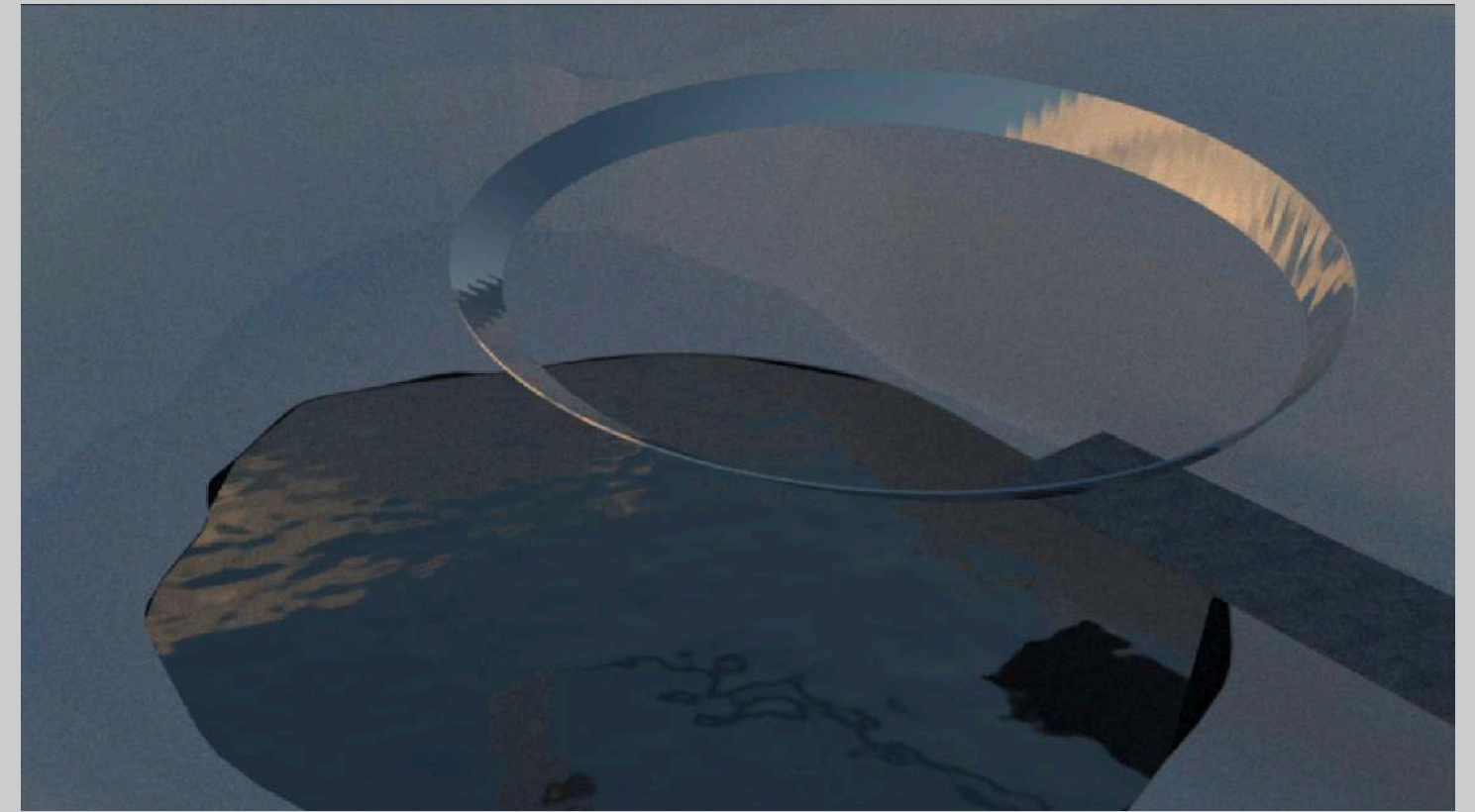
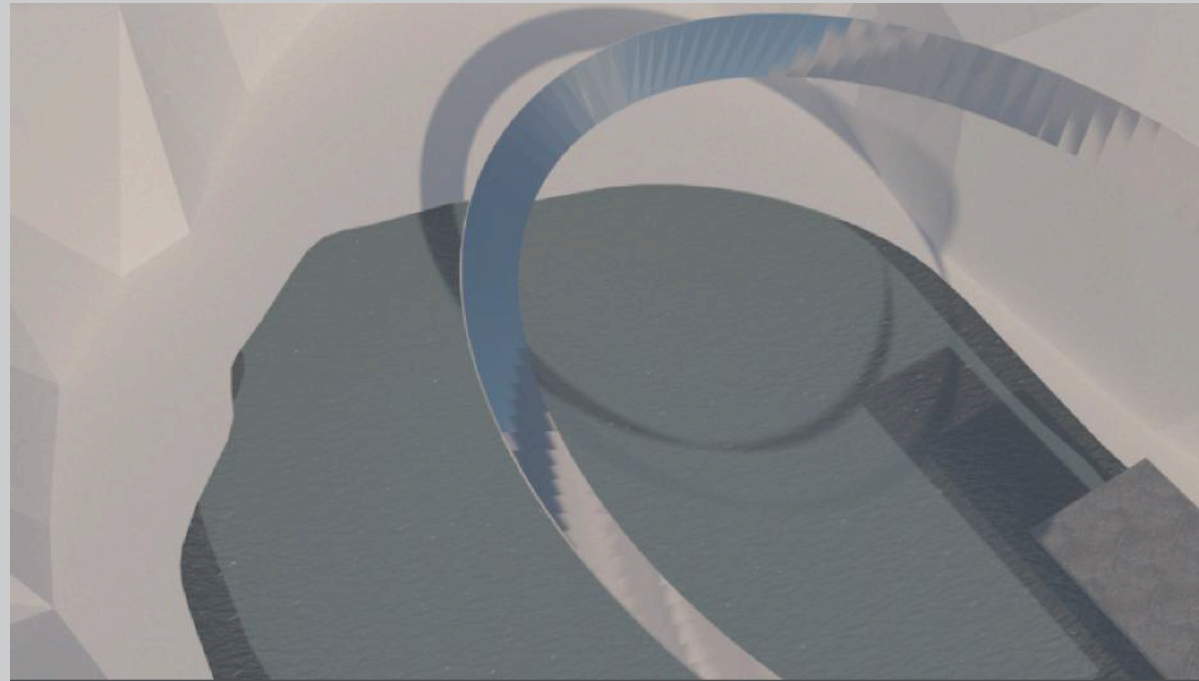
Program

The project comprises of a series of interventions connected through the flow of the water running from the Mine to its distribution at the foothills of Devil's Peak.

The diagram below illustrates this relationship and its direct correlation to the allocation of programs along the interventions.



(29)



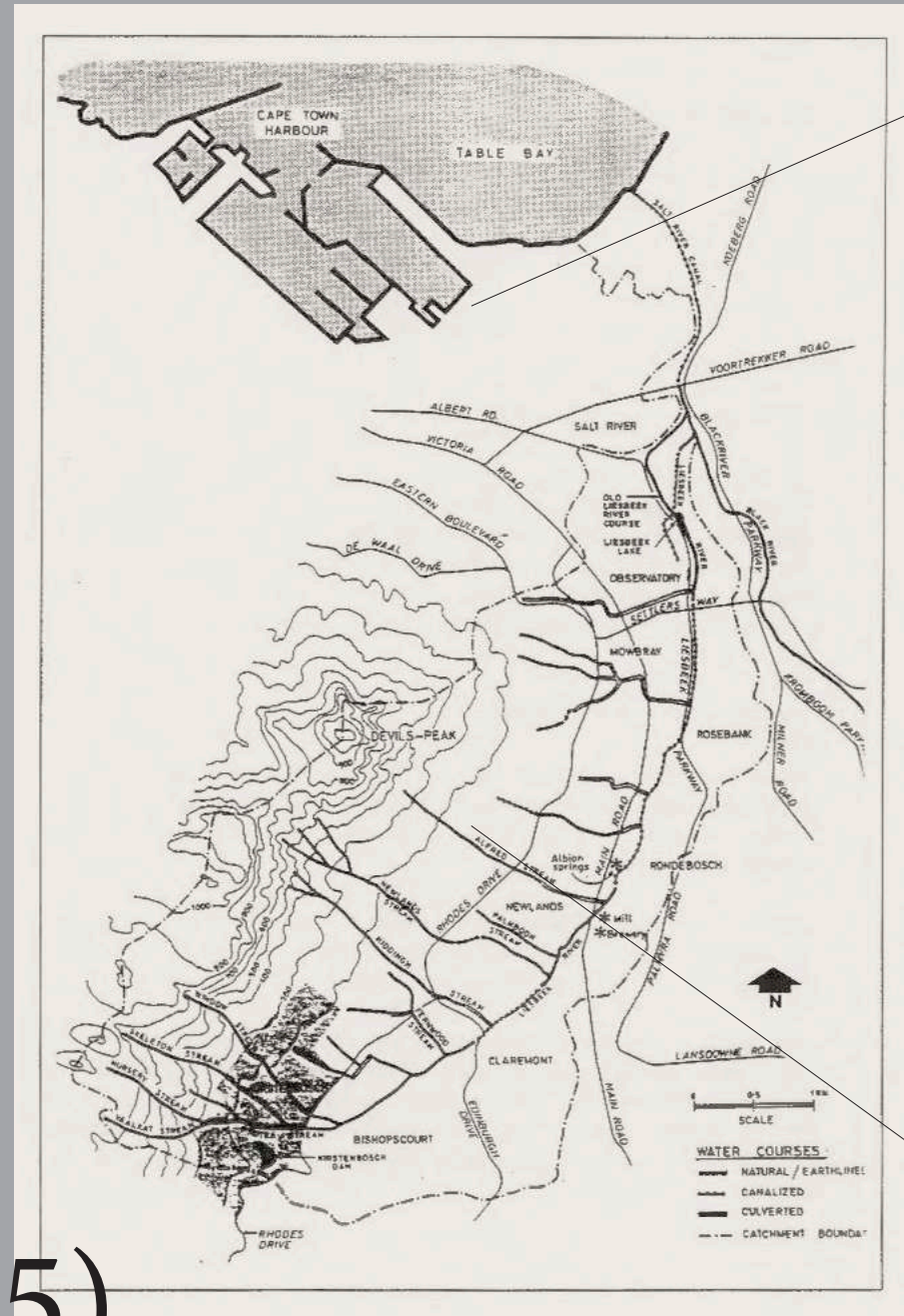


**Cape Town Area of Research:
District Six, Water and Table Mountain**

Earlier research on forced migratory patterns in the wake of natural disasters in Asia revealed a direct correlation 'physical traces' left behind by the movement of water, blocking off crucial routes.

As we shifted directions to Cape Town, historical research revealed a similar correlation between the forced migratory patterns of the Apartheid era in relation to land ownership and systemic governance of water.

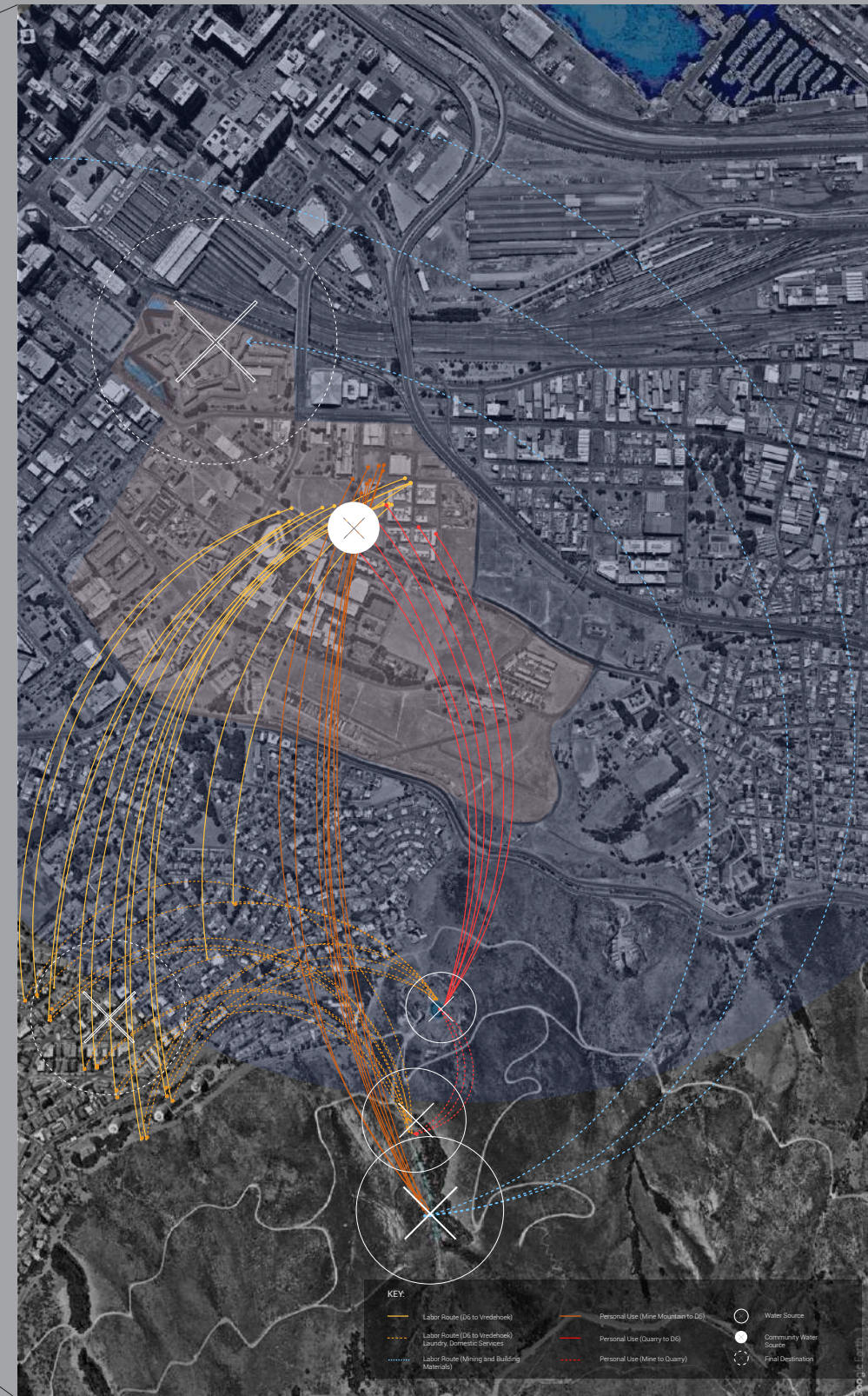
To the right: the forced migration of residents out of District Six to townships over time is mapped out.



(35)

Map illustrating Leisbeek River and its main tributaries (after Day, 1995)

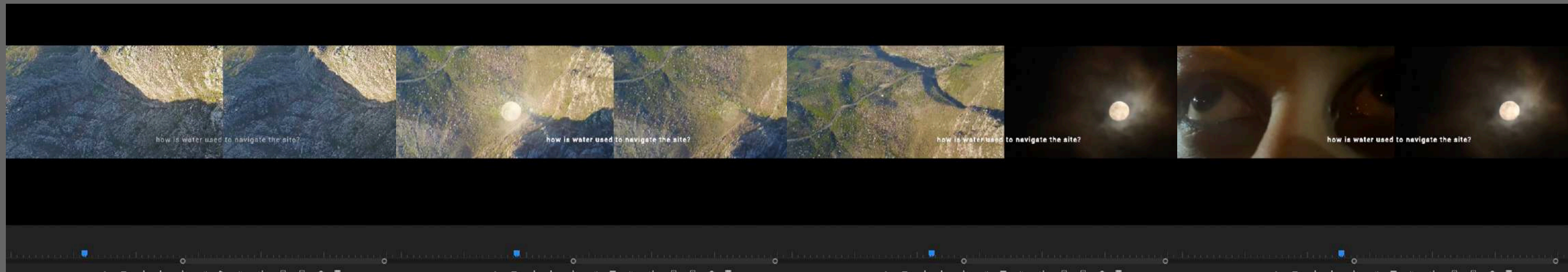
Streams of water that have been canalised, or culverted are shown. Project site is located within the Western catchment boundary shown.



Water + Collective Memory.

The diagram illustrated the relationship between residents of District Six and water during the colonial, and post colonial era.

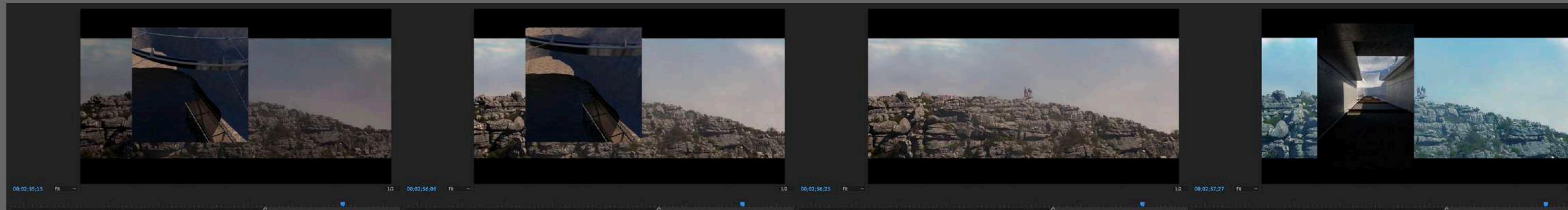
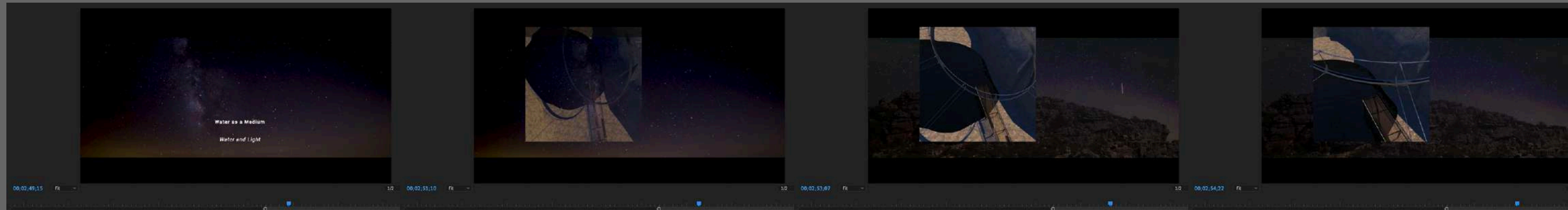
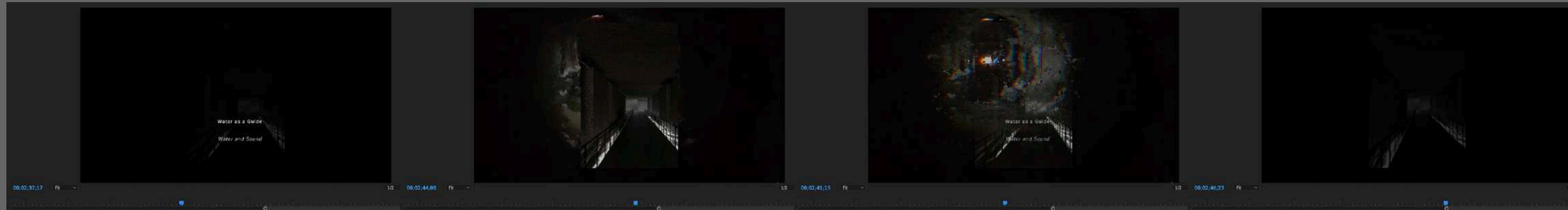
Mapped out are the sources of water -and who they serve- in relation to labor, leisure and circulation.



33.9549° S, 18.4395° E

(39)





33.9549° S, 18.4395° E

(41)



Existing Site

Both the quarry and mine tunnels are historic existing tunnels that will need to be expanded and reinforced using tie backs and anchors. Left: remnants of the following materials are said to make up the parts of Table Mountain that the project is set in.



Rhyolite
Igneous, volcanic rock, of felsic composition. It may have any texture from glassy to aphanitic to porphyritic.

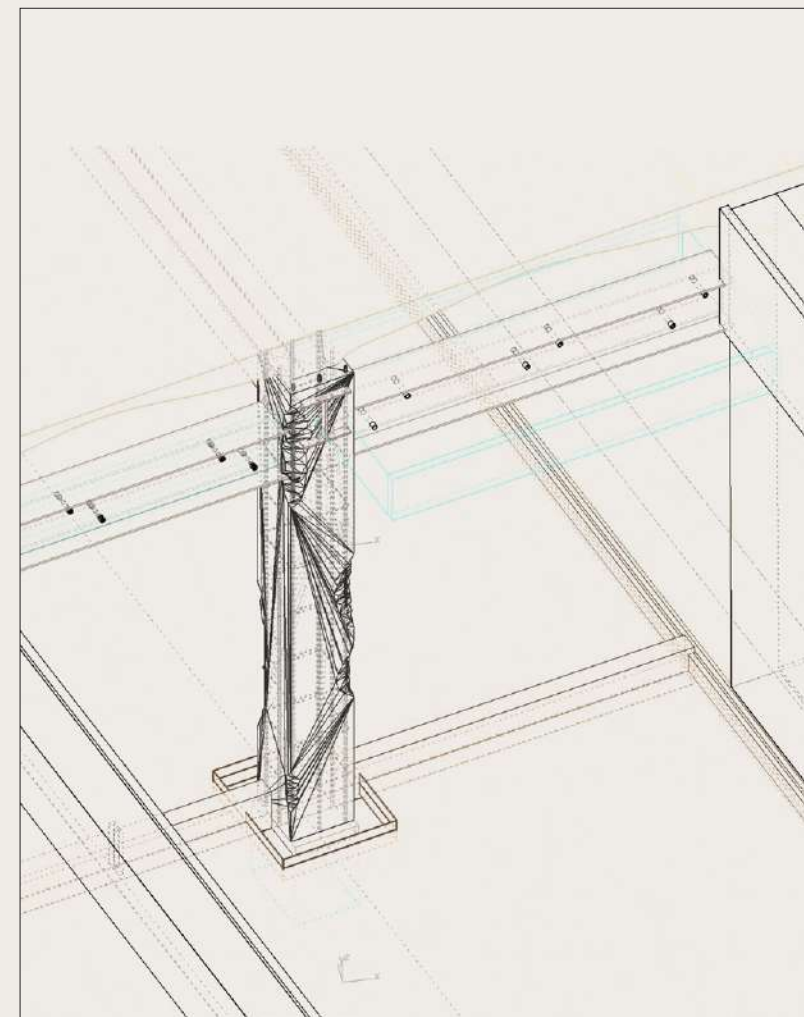
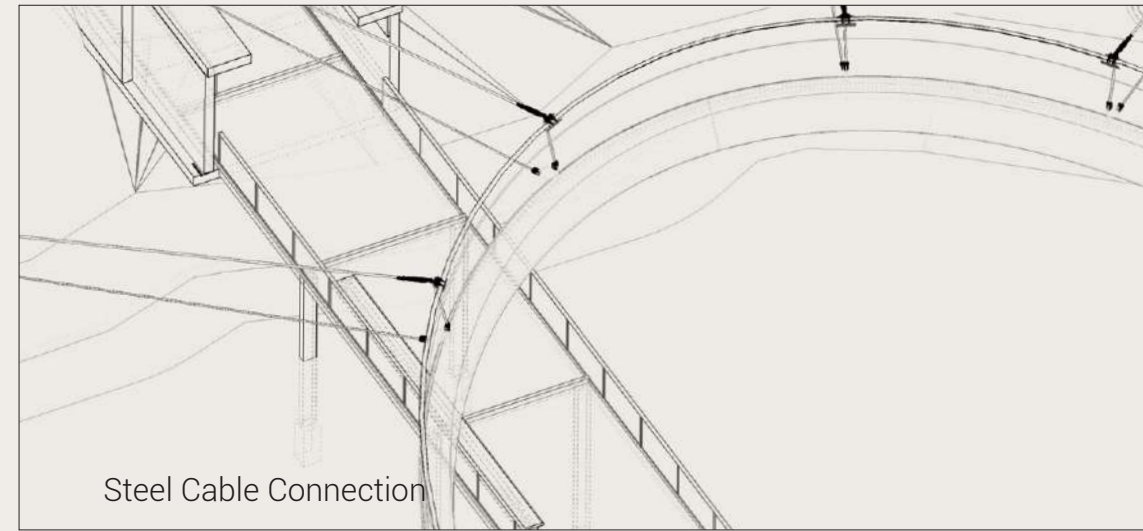


Granite
Common type of felsic intrusive igneous rock that is granular and phaneritic in texture.

Cassiterite

A tin oxide mineral, SnO₂. It is generally opaque, but it is translucent in thin crystals. Its luster and multiple crystal faces produce a desirable gem.

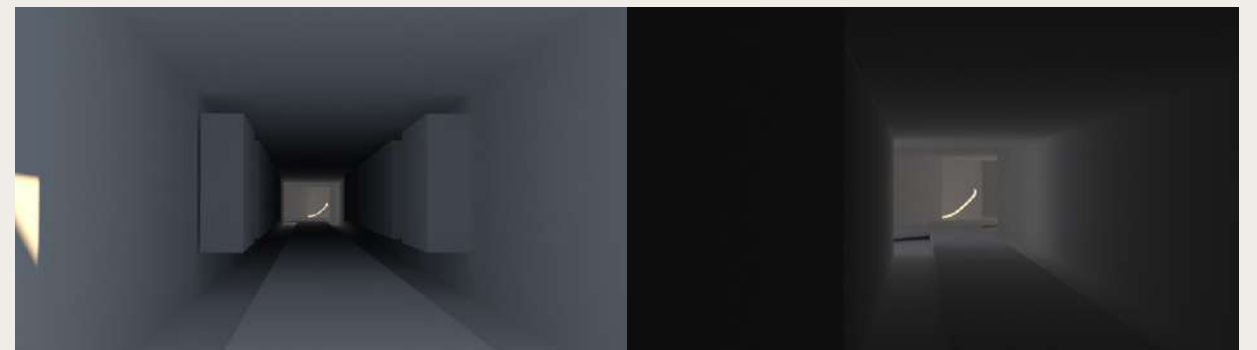
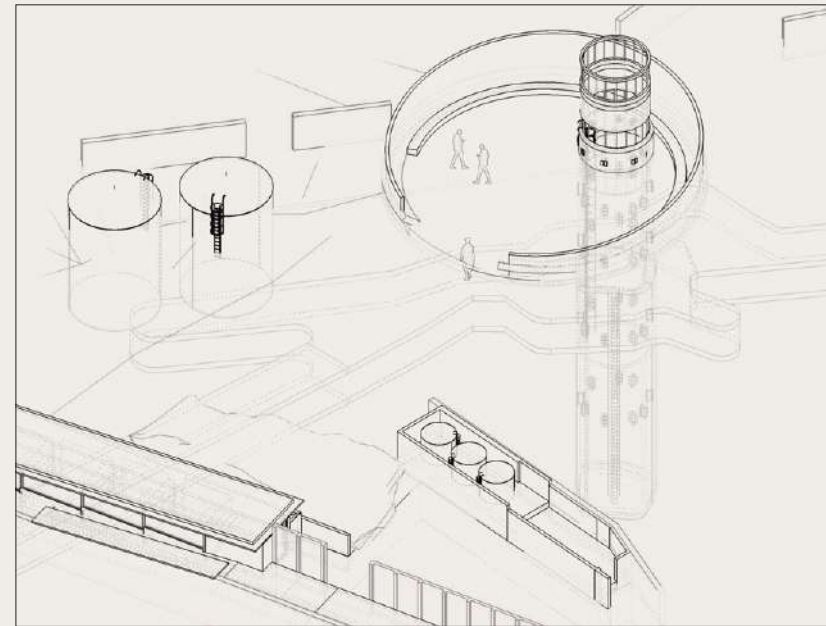
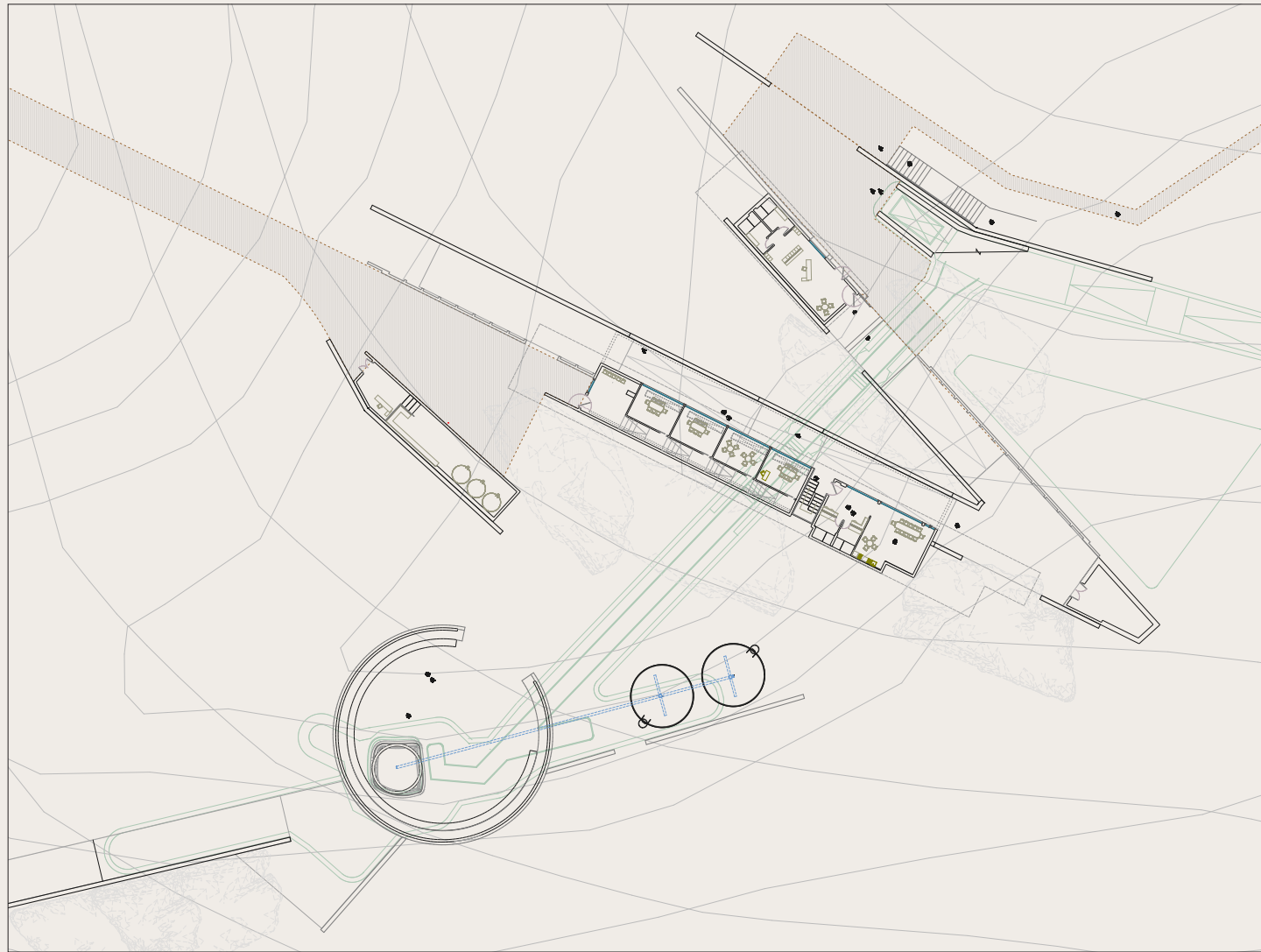






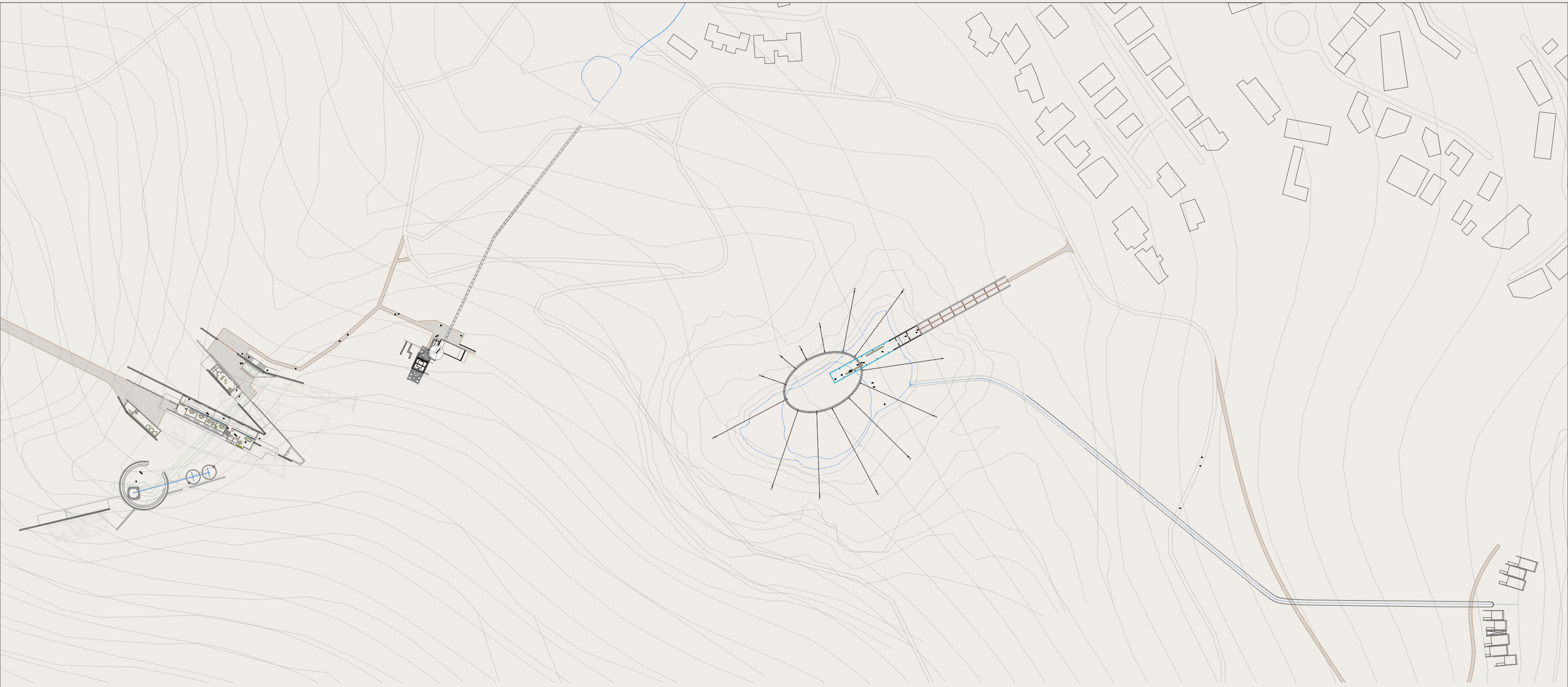
(47)

33.9549° S, 18.4395° E

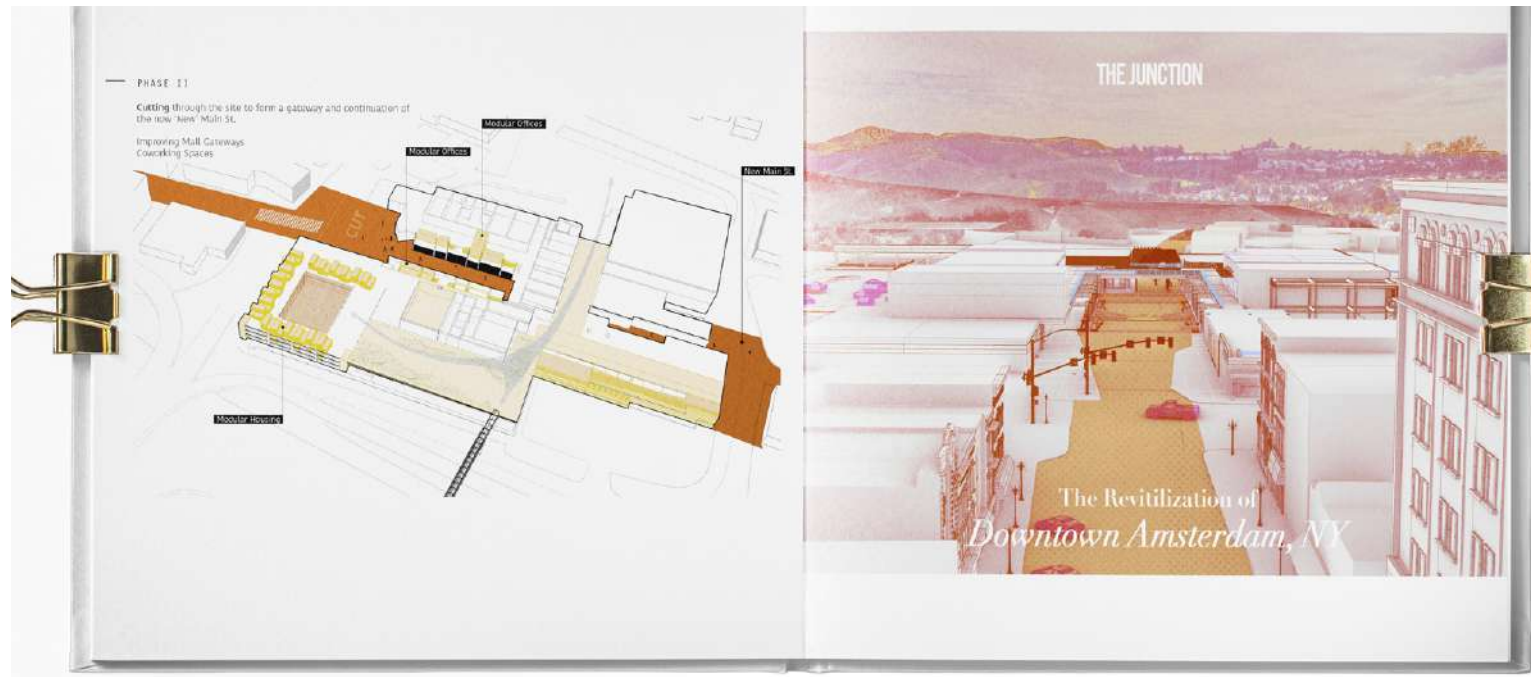


View from inside the newly expanded mine, and path to Vertical Shaft.





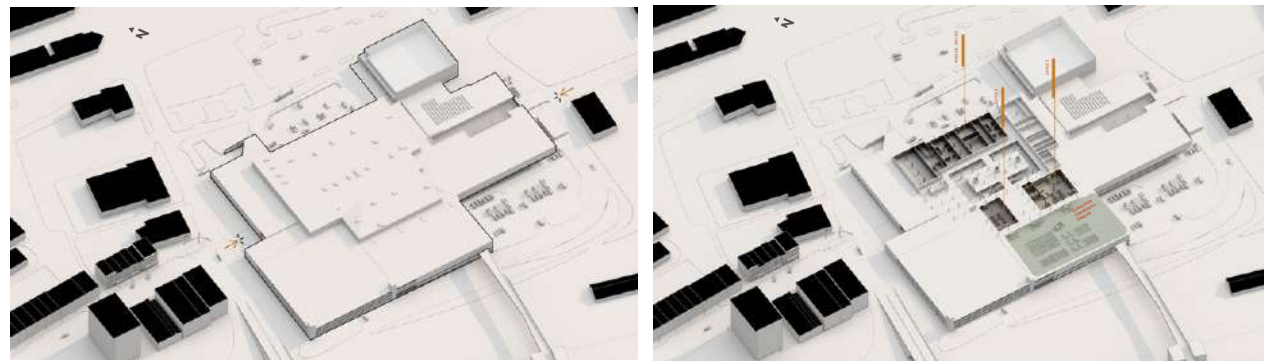
THE JUNCTION:
AMSTERDAM REVISITED



PHASE I

INJECT

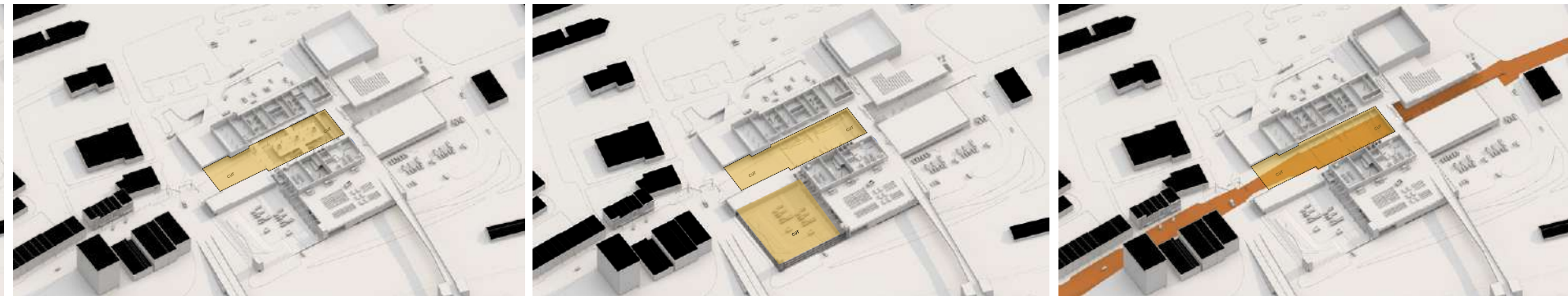
experimental urban interventions including a feature roof garden that makes use of the under utilized parking garage



PHASE II

CUT

a strategic cut into the mall that allows for a reintroduction of a 'new main st.' through the removal of the central mezzanine and condemned parking garage.



PHASE III

ACTIVATE

activation of the site through interventions that target pedestrian circulation pathways, landscape treatments and facade renovations as well as environmental branding and placemaking strategies.

