

transparency

rigidity

interstices

spin

civic minded

slide

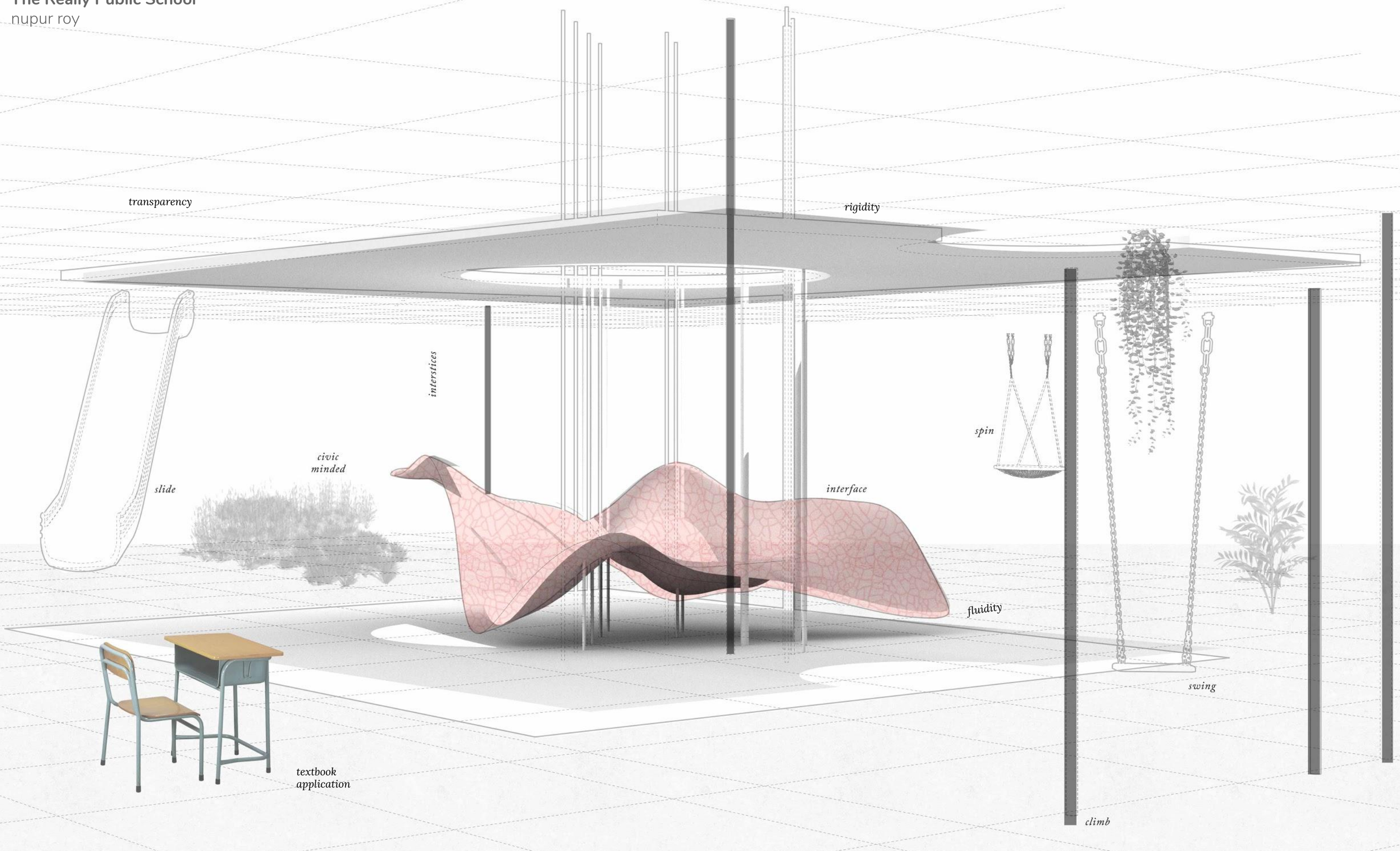
interface

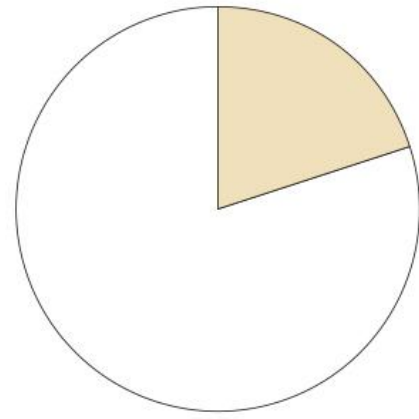
fluidity

swing

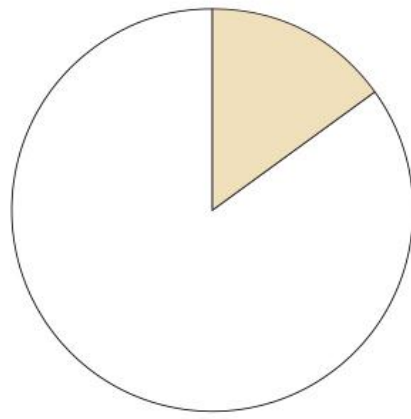
textbook application

climb

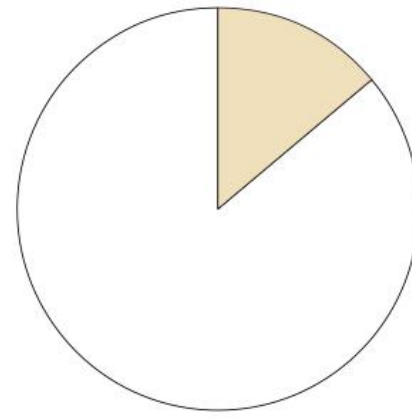




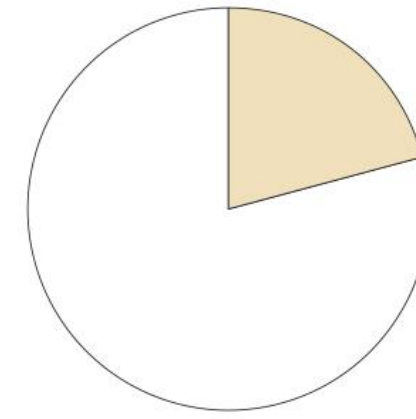
per year
20%



per month
15%



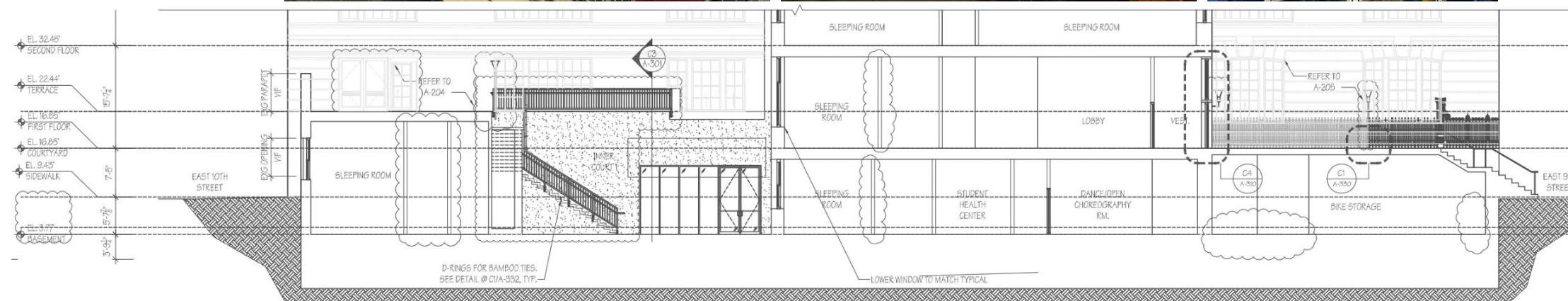
per week
14%



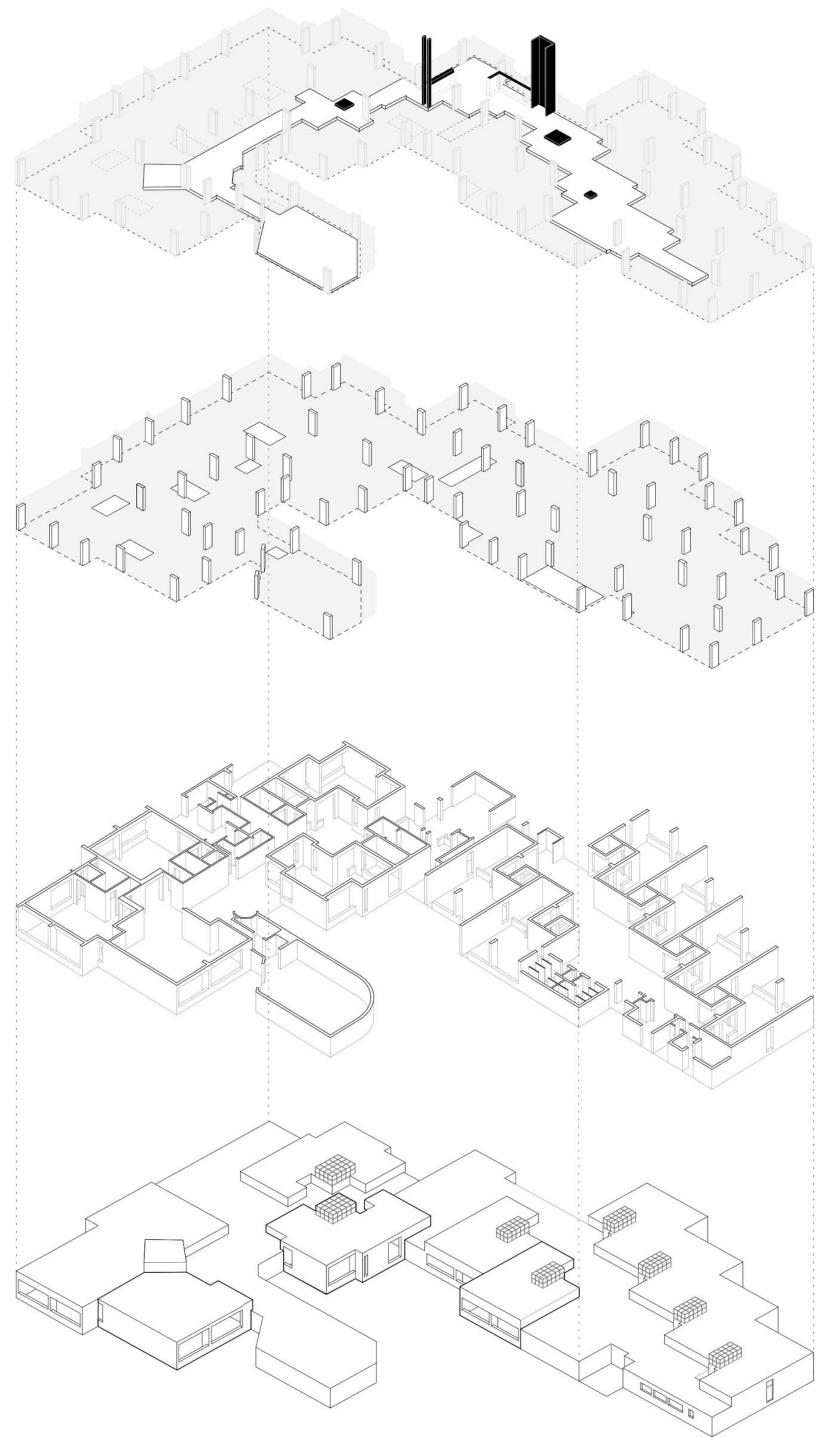
per day
21%

The academic school year is 180 days long.
The average school day is about 5.5 hours long.

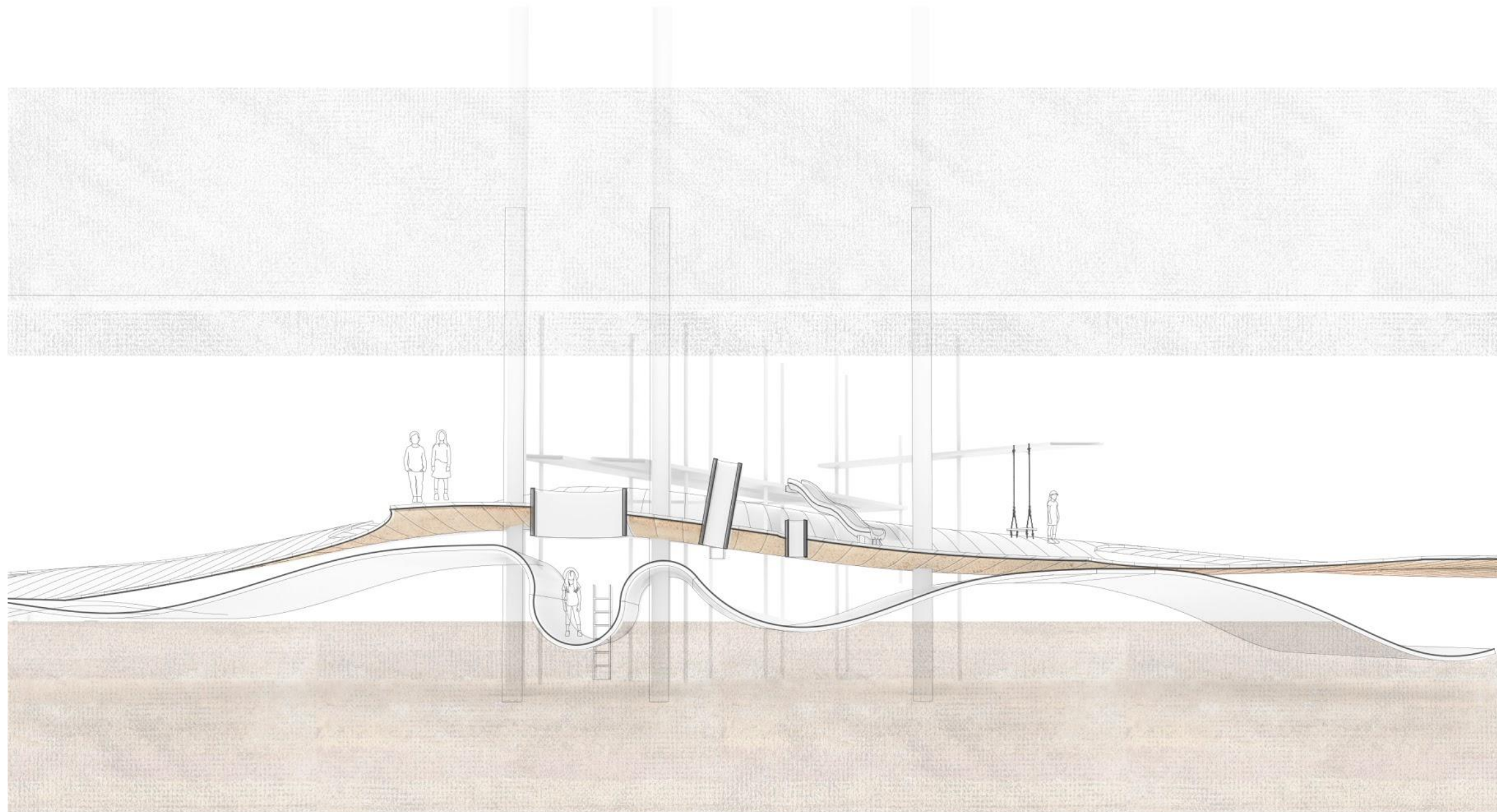
Source: New York State Education Department

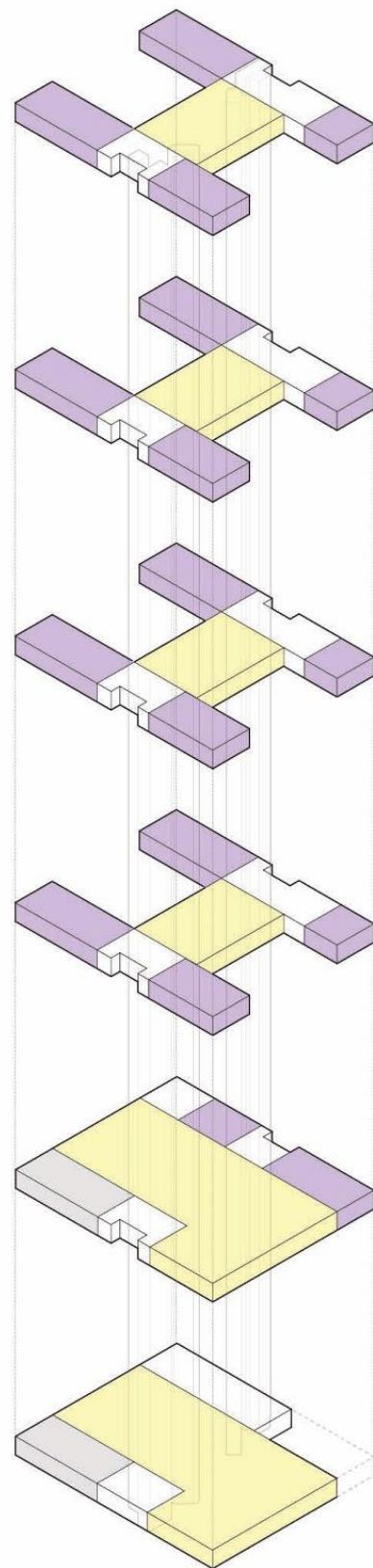
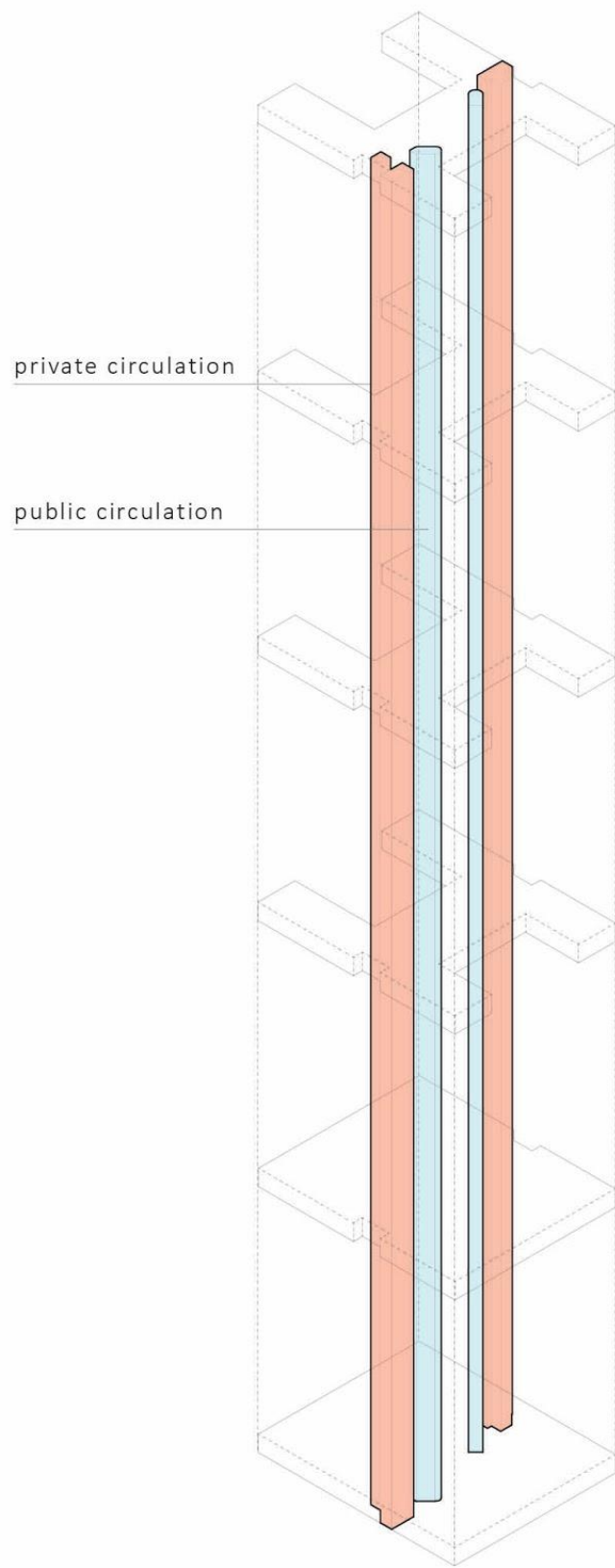


C1 SECTION THROUGH LOWER TERRACE 1, LOOKING EAST
A-211 / 1/8" = 1'-0"









- level 5**
grades 4 & 8
gymnasium

- level 4**
grades 3 & 7
science laboratory

- level 3**
grades 2 & 6
music room

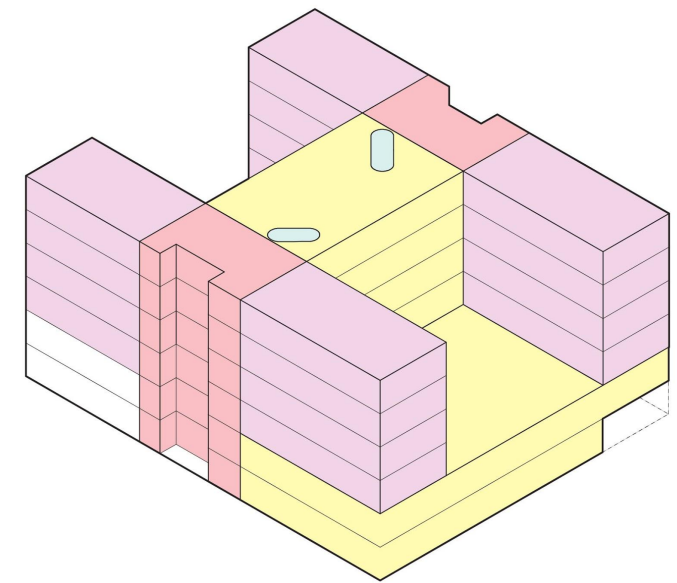
- level 2**
grades 1 & 5
library

- level 1**
kindergarten
cafeteria
community playscape

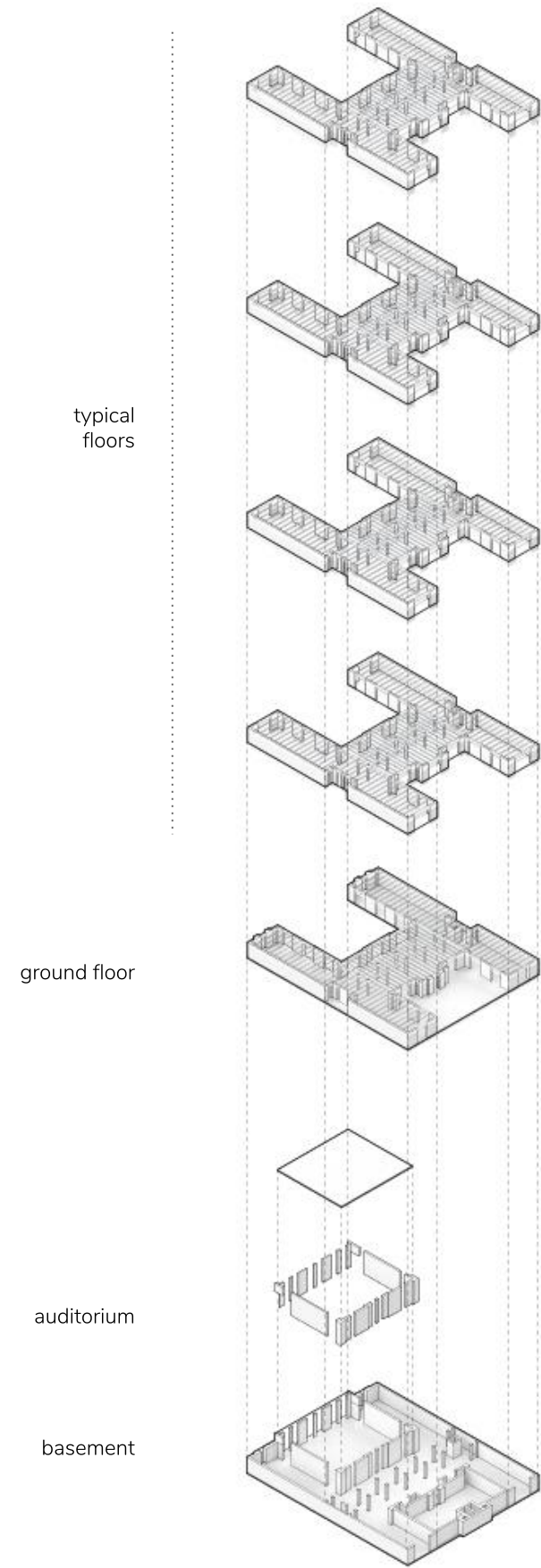
- basement**
kitchen
community playscape

OPERATIONAL
THOUGHT

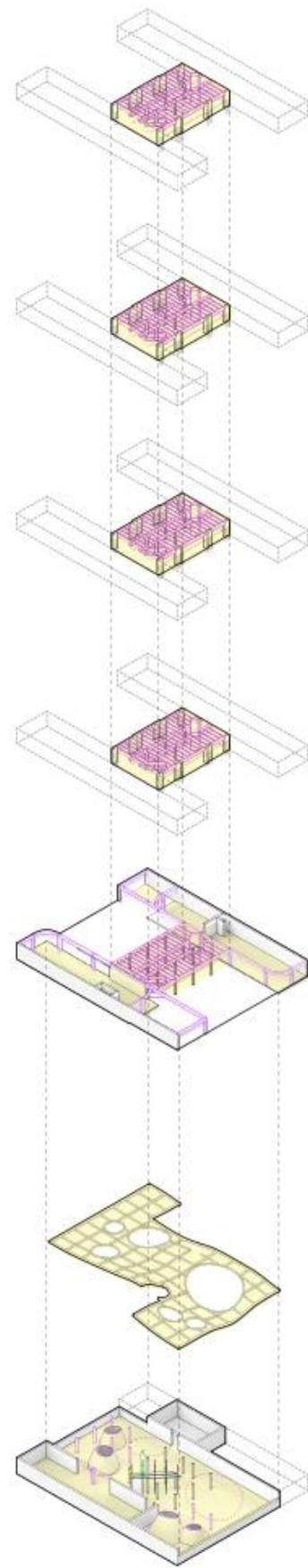
SYMBOLIC
THOUGHT



- classrooms
- specialized learning spaces
- private circulation
- public circulation



existing structure



new structure

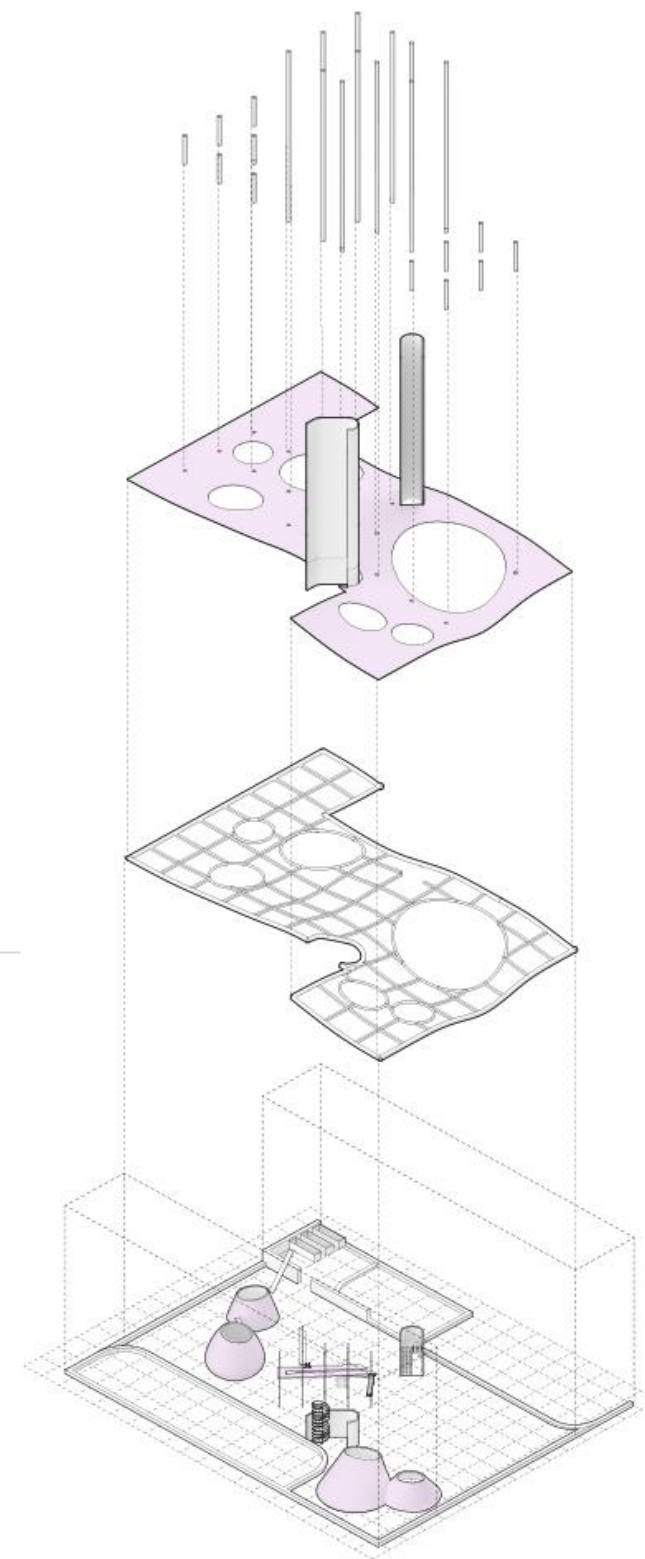
gymnasium

science lab

music & breakout space

library

datum



columns

datum & new public circulation cores

glulam framework

basement

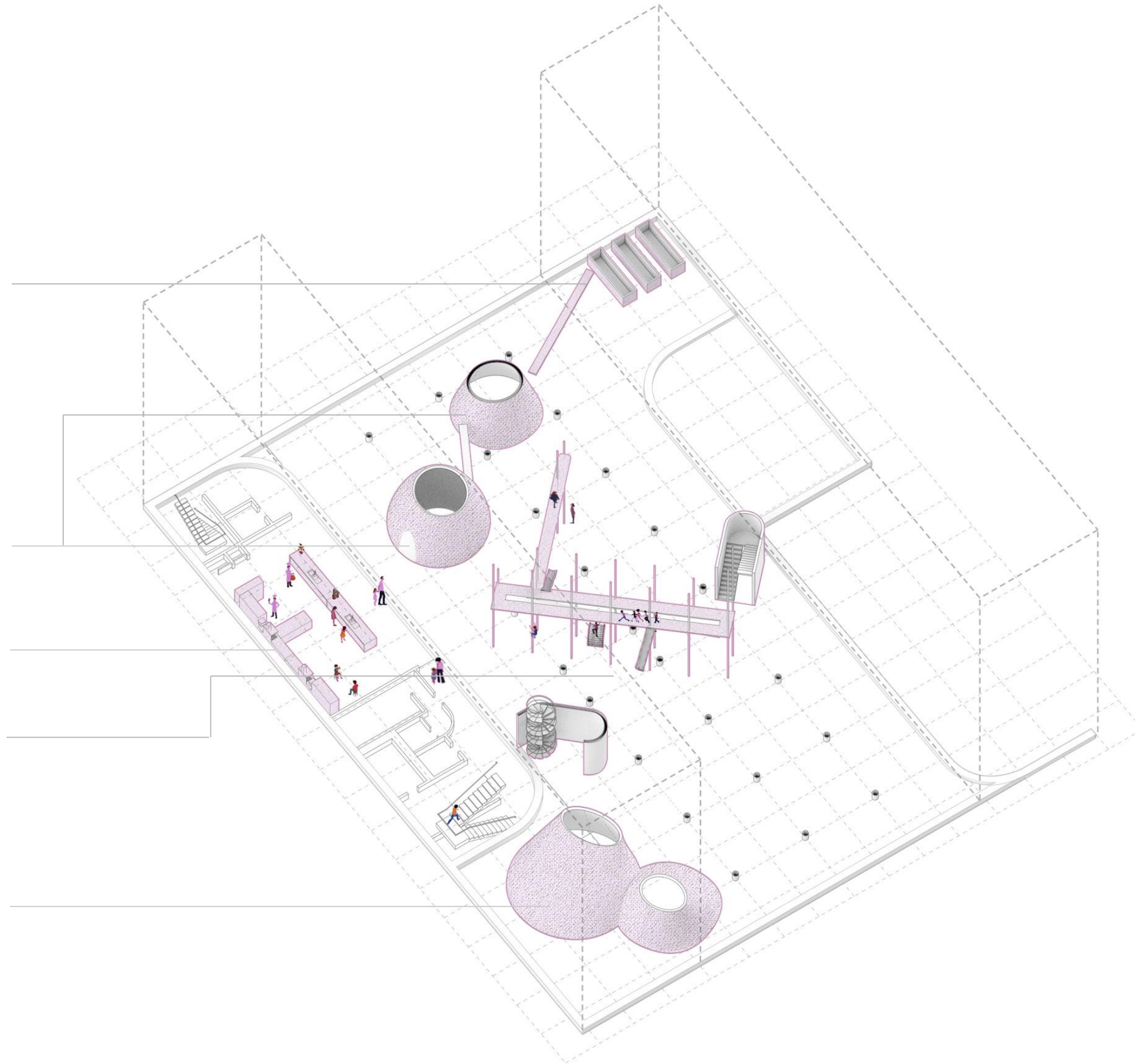
community
compost

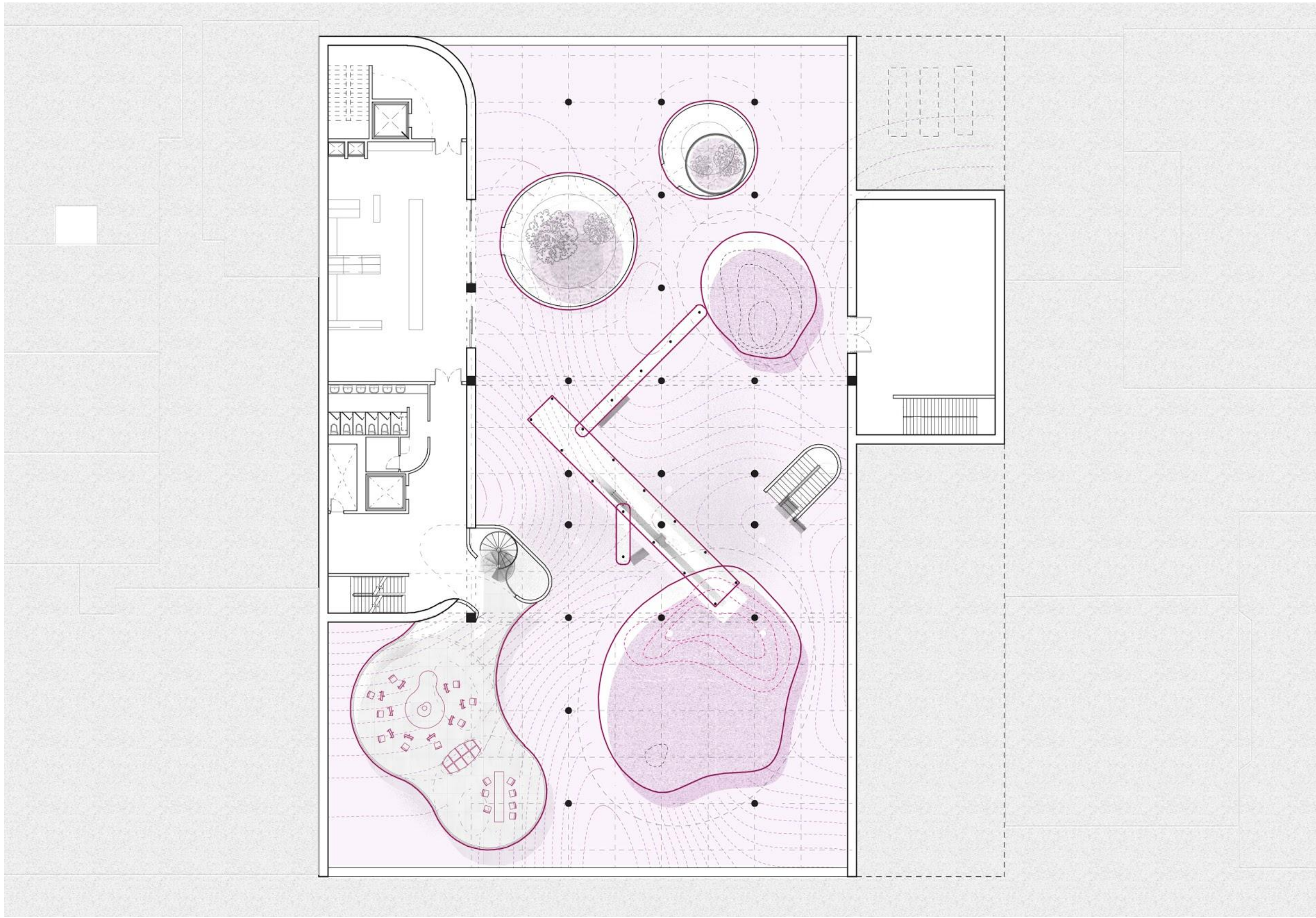
veggie patch

kitchen

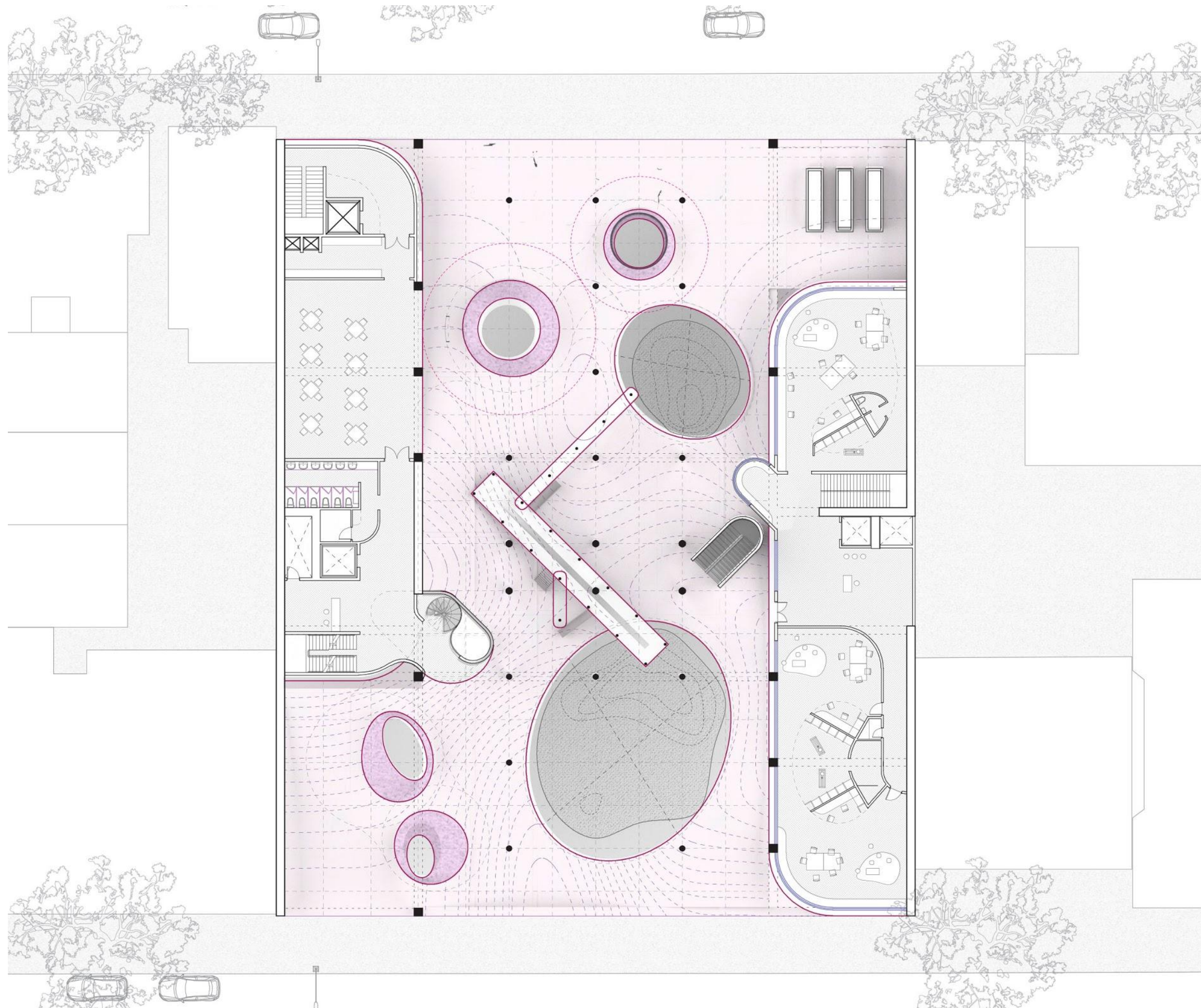
playscape

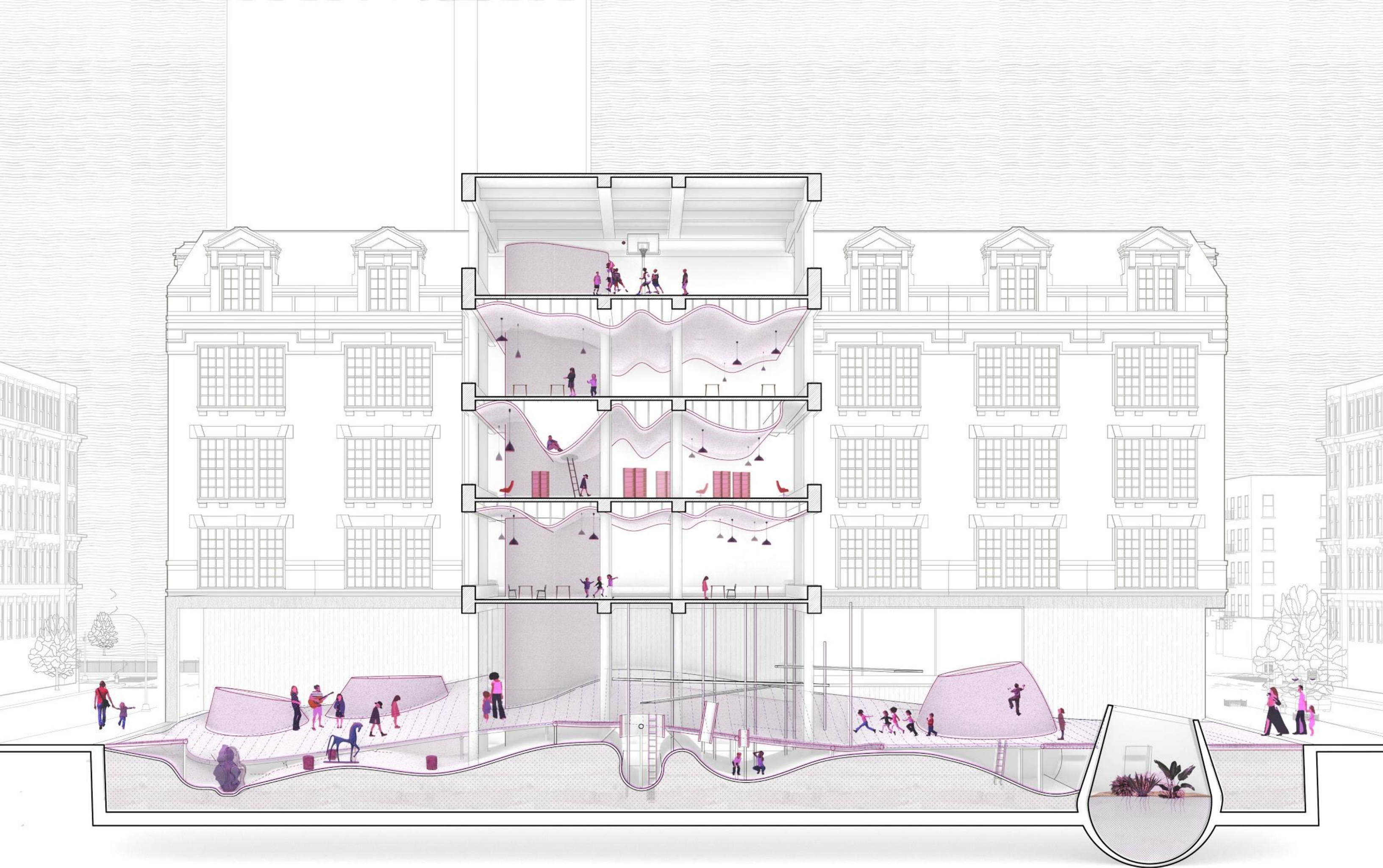
art studio

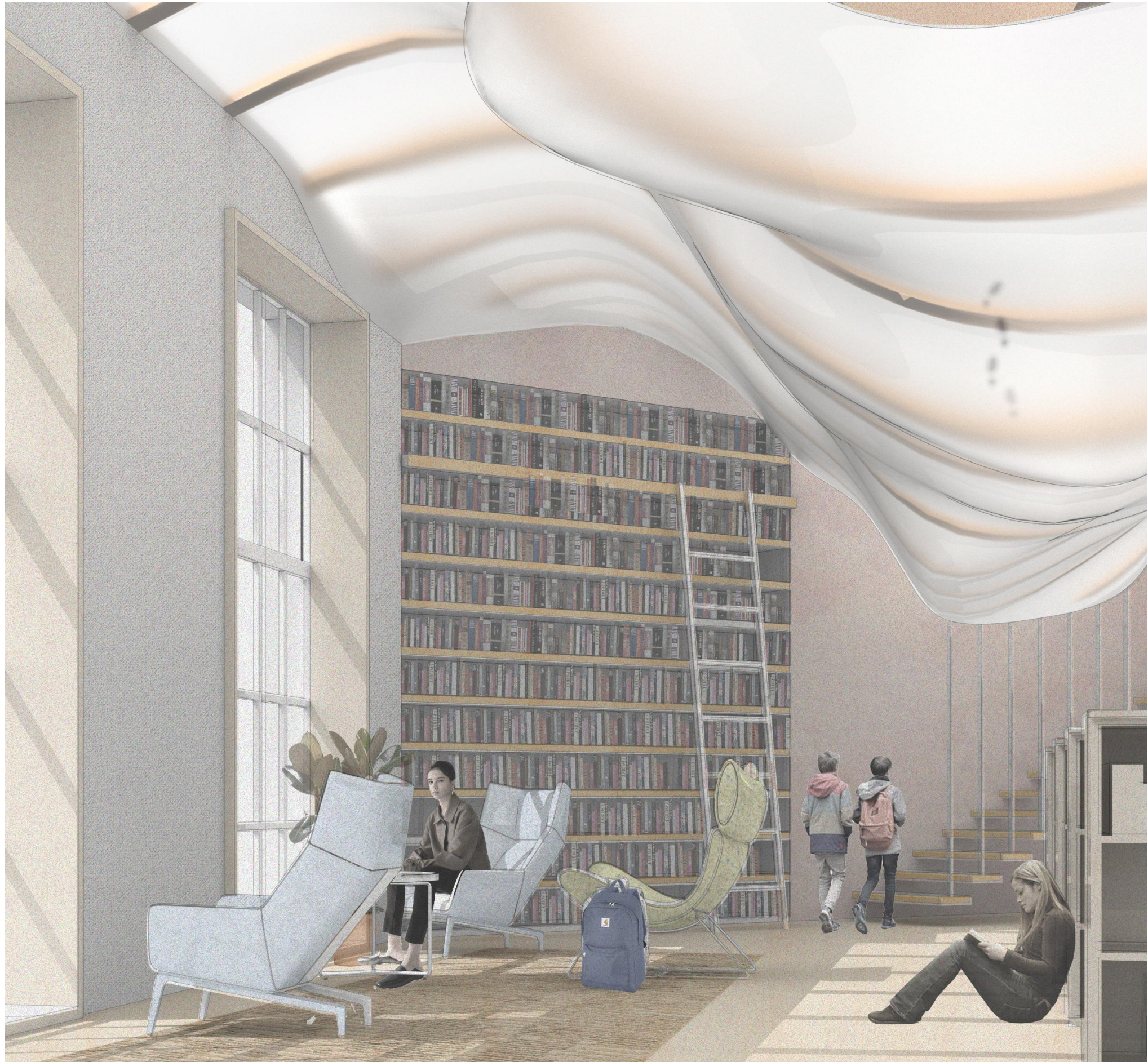


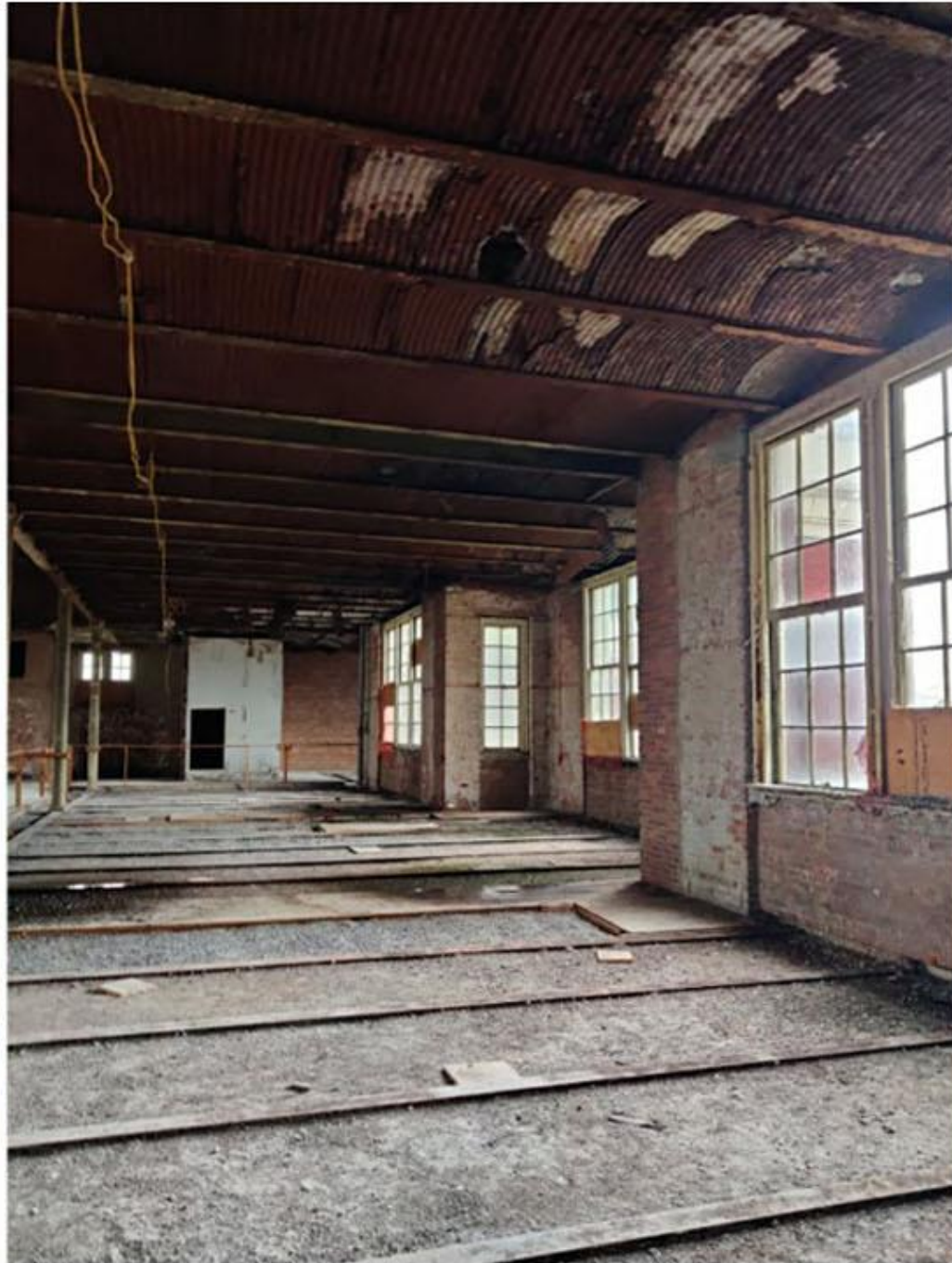


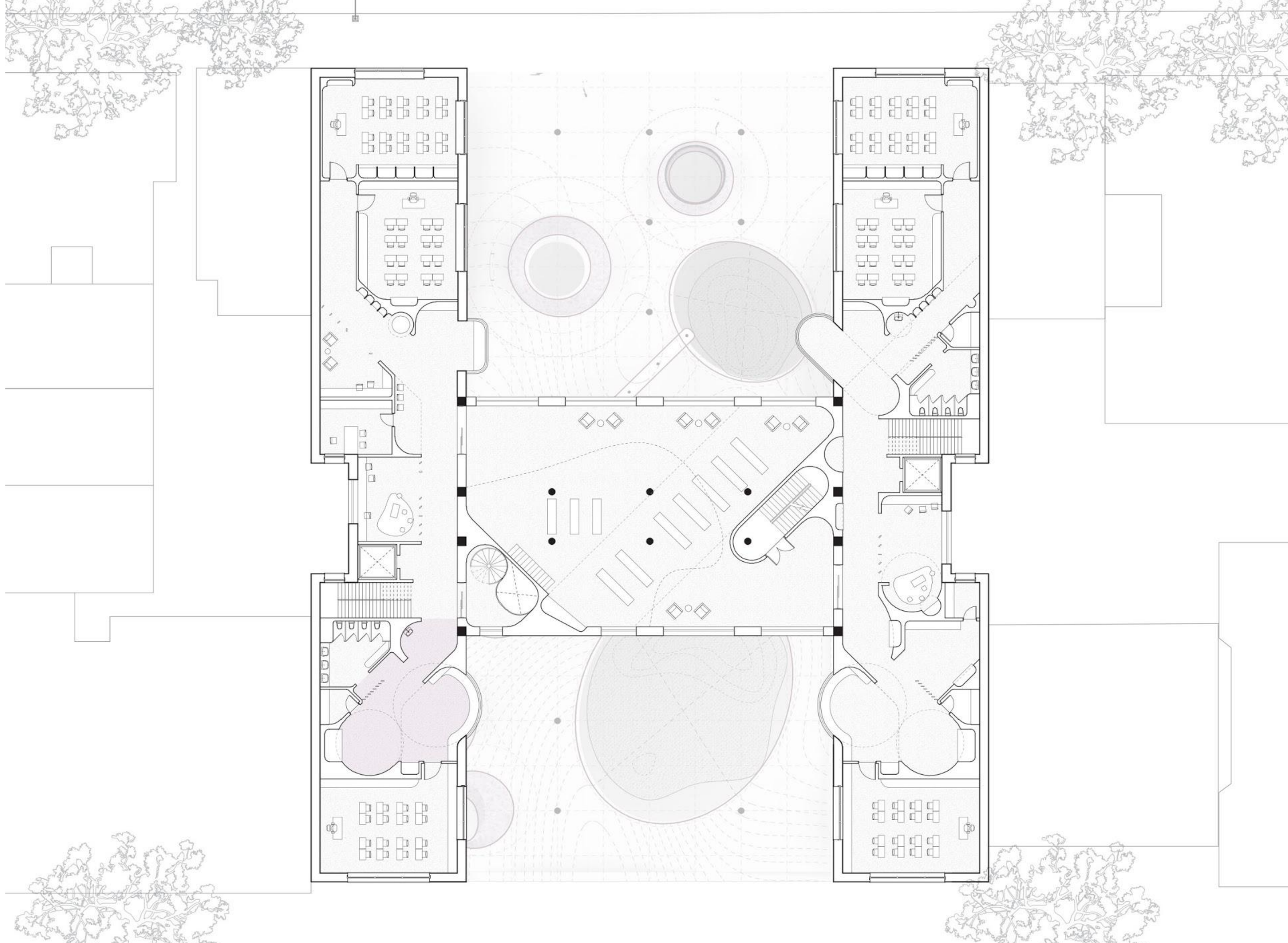


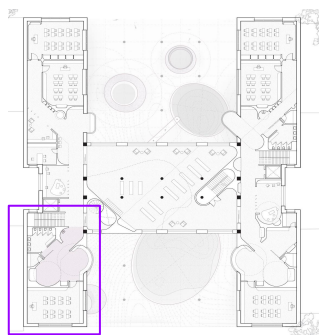












A POCKET

