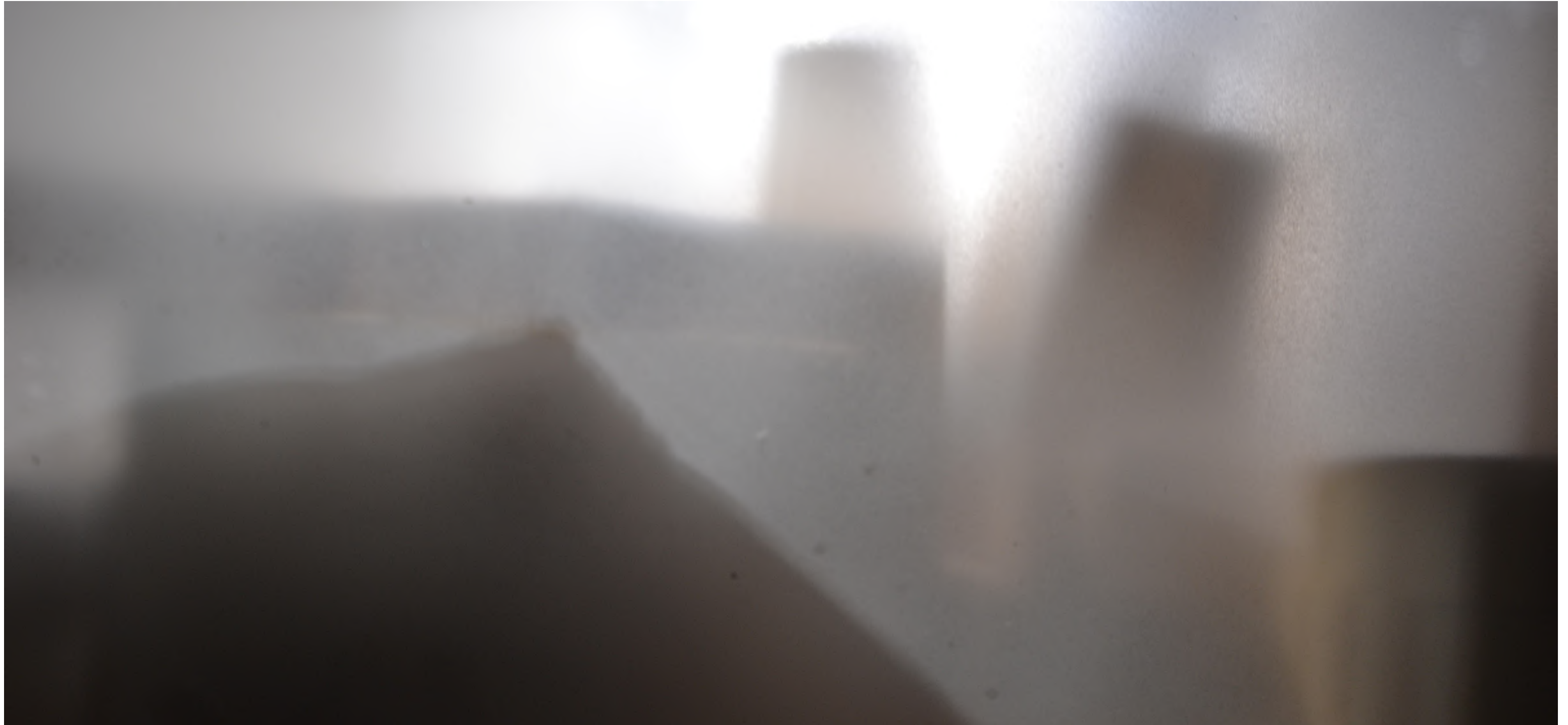


HOLY SCHOOL

NEW ENCOUNTERS + UNDERSTANDINGS

MAX GOLDNER
SCHOOL FOR OUTSIDERS



A HOLY SPACE...

A HOLY SPACE LOOKS LIKE...
Comfy, respected, loved, healthy, and peaceful, clean, and not lazy.



A HOLY SPACE NEEDS...

God
Peace
love
family
friends

A HOLY SPACE HAS... God God



A HOLY SPACE LOOKS LIKE...



A HOLY SPACE LOOKS LIKE...

a home



A HOLY SPACE NEEDS... family & friends

so, care, love, respect



A HOLY SPACE HAS...

Family
Rabi's
Friends



A HOLY SPACE LOOKS LIKE...



A HOLY SPACE LOOKS LIKE...
Comfy, respected, loved, healthy, and peaceful, clean, and not lazy.



A HOLY SPACE LOOKS LIKE...



A HOLY SPACE NEEDS... a family



A HOLY SPACE HAS... Peace, kind people.

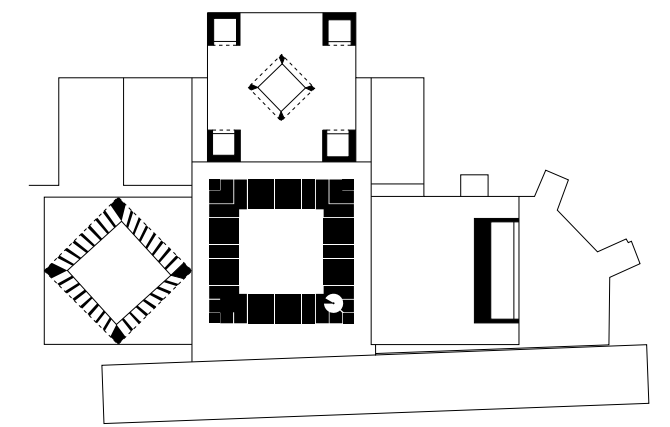
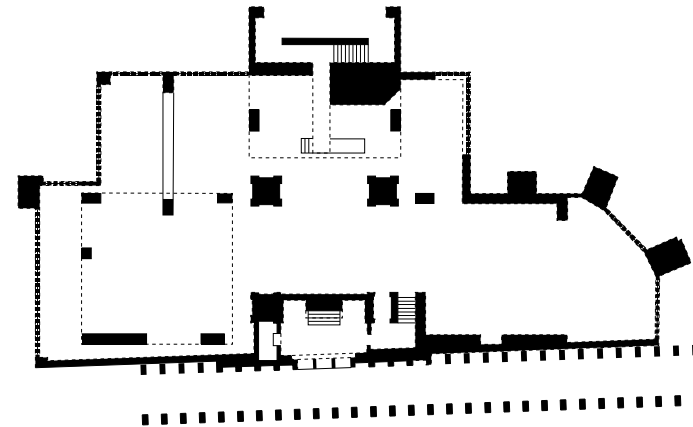
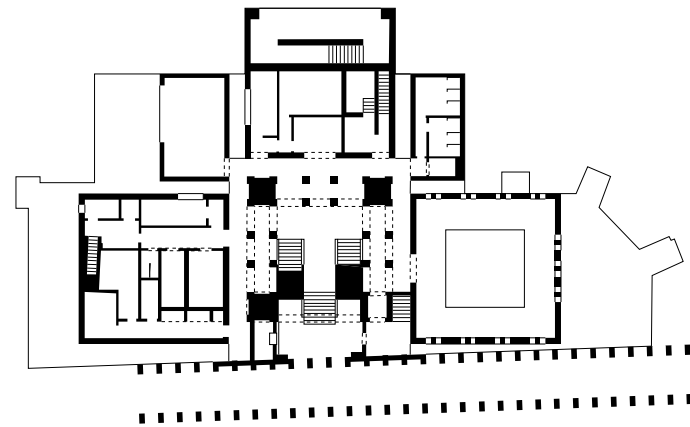
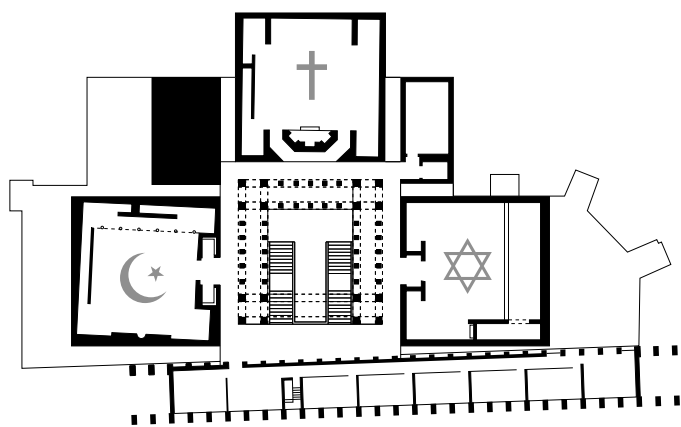
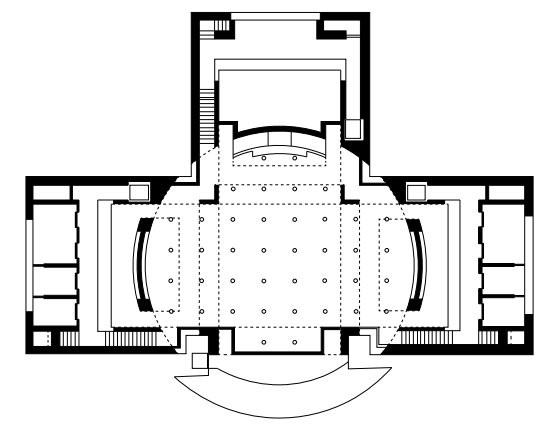
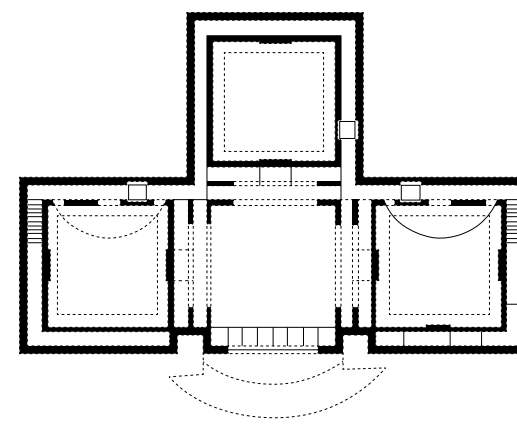
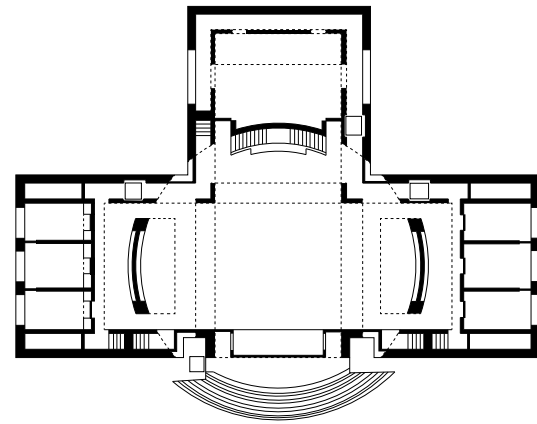
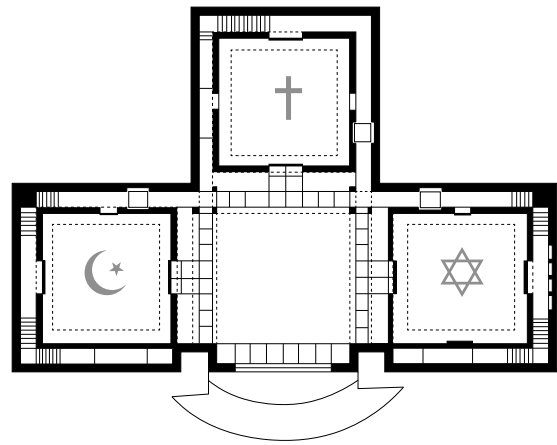
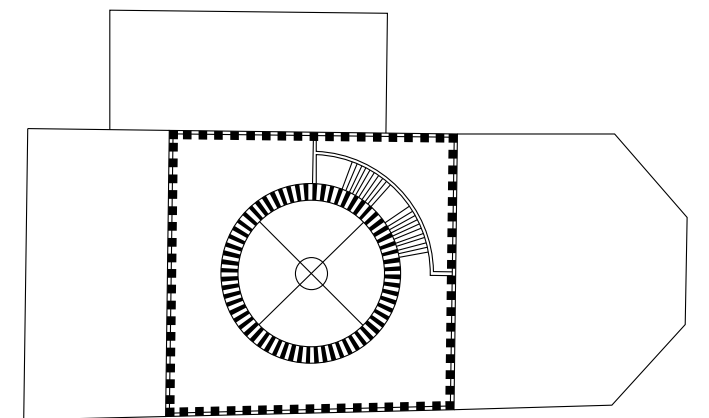
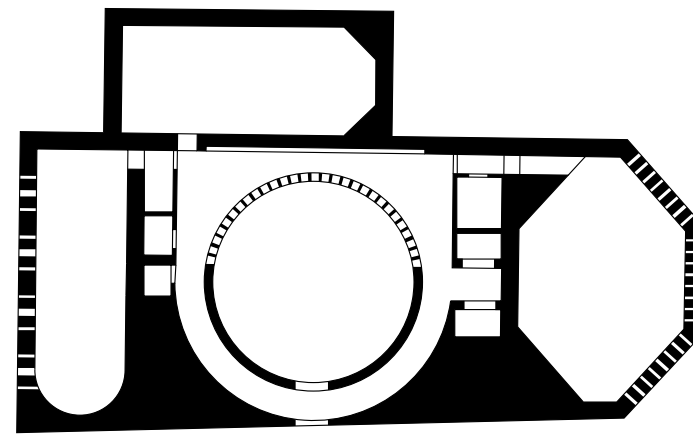
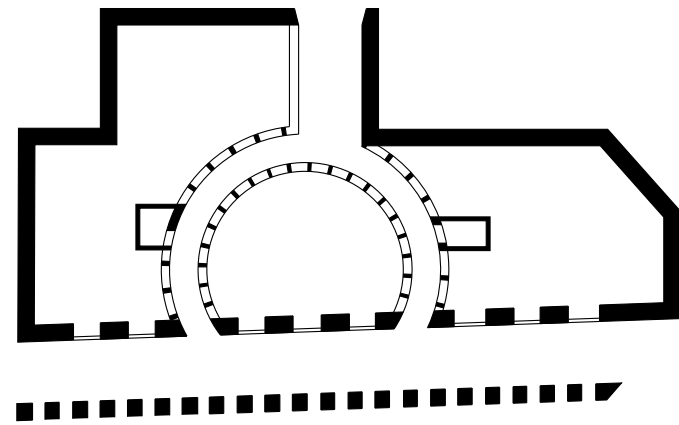
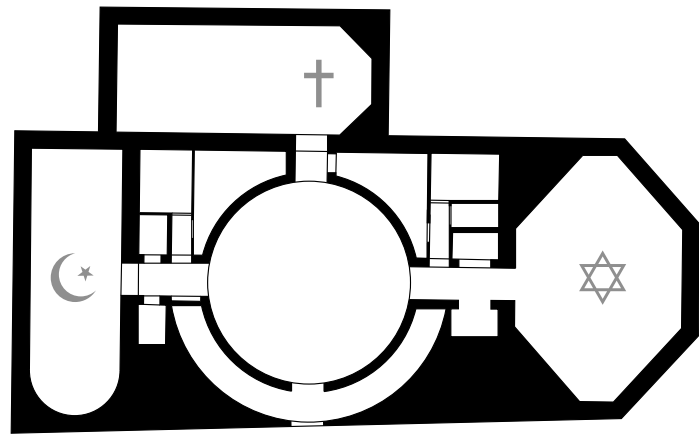


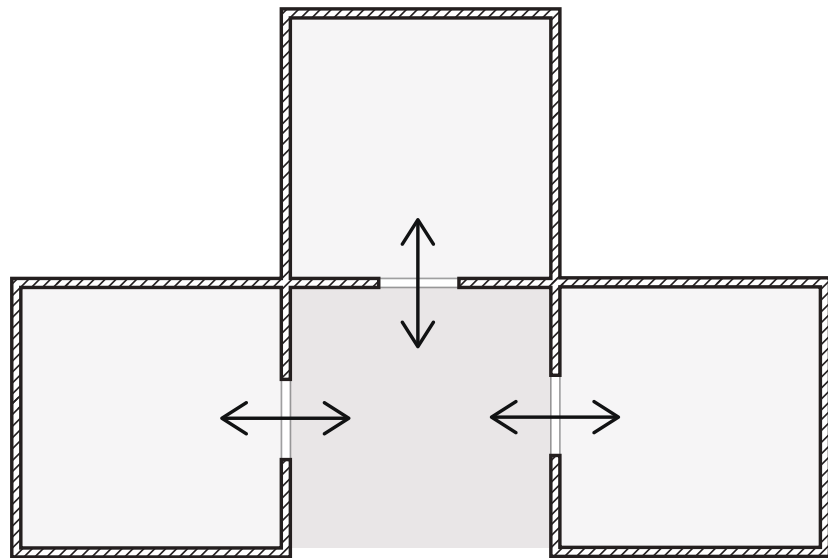
A HOLY SPACE HAS... god
family
friends
casins
thing you love



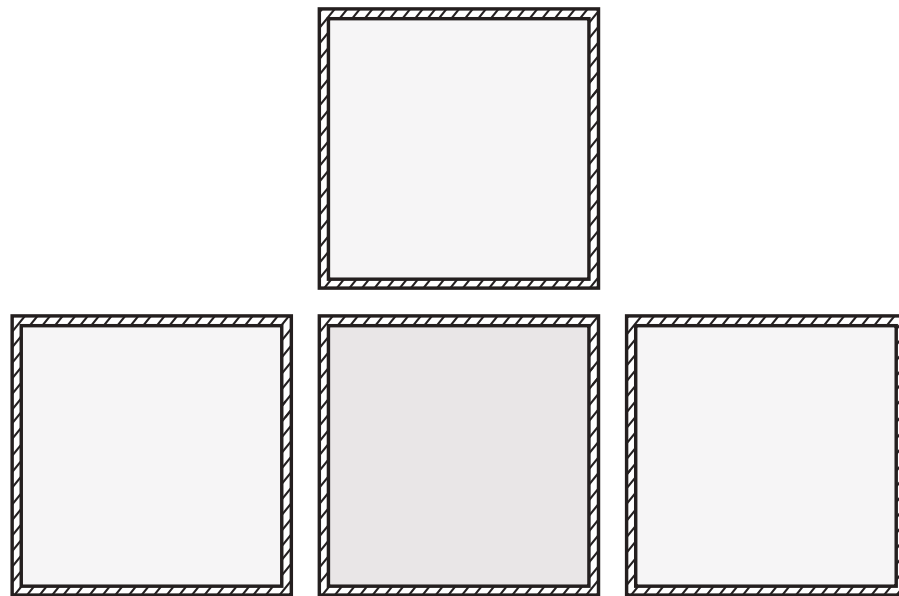
A HOLY SPACE LOOKS LIKE... this



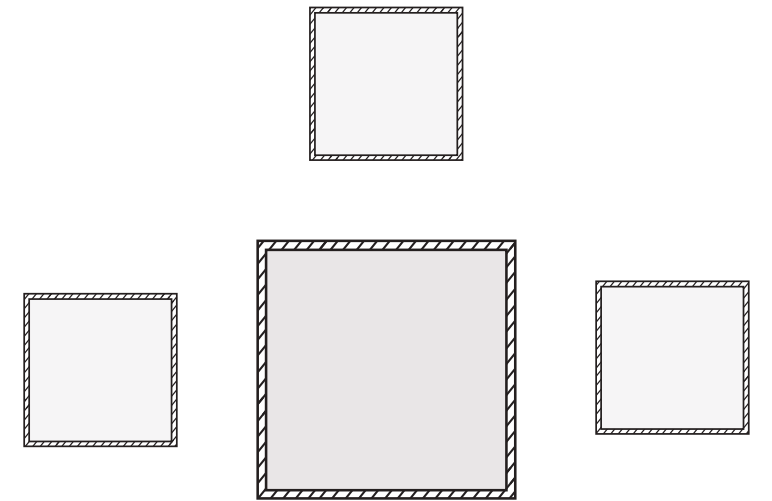




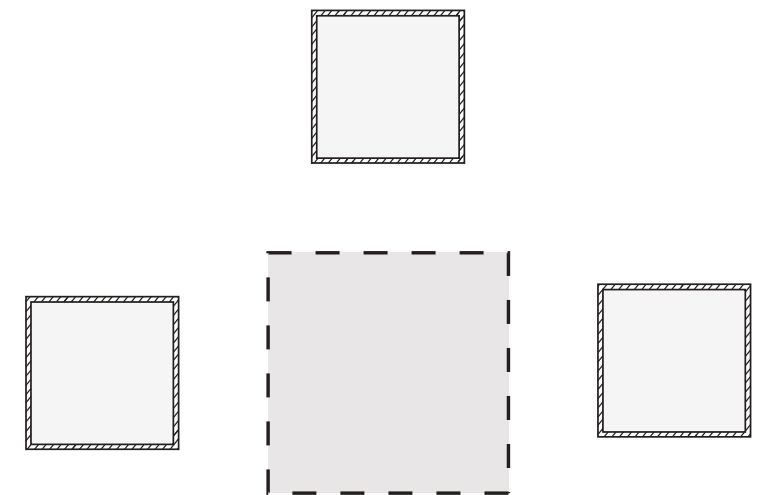
WHO IS SERVING WHO?



HOW TO EQUALIZE ALL 3 SPACES...



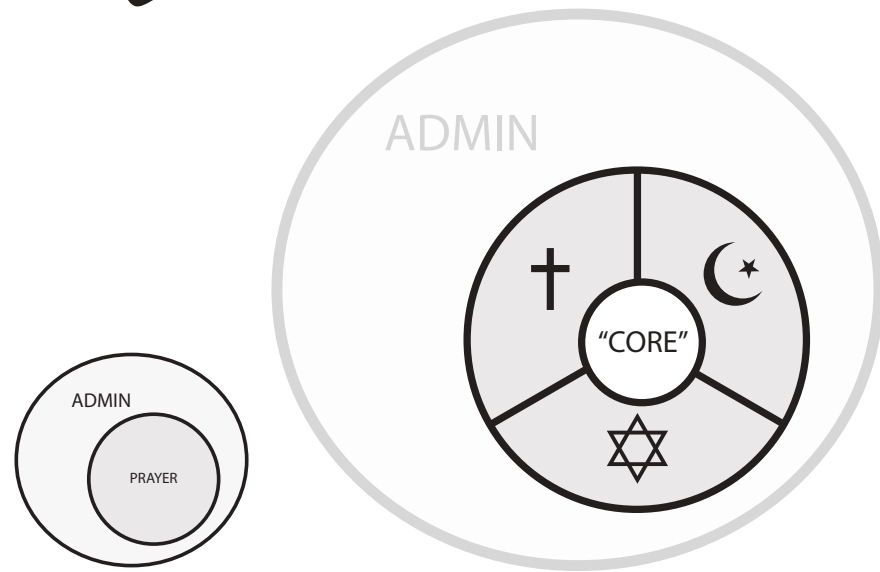
REGARDLESS OF SIZE...



OR PRIVACY DIFFERENCES?

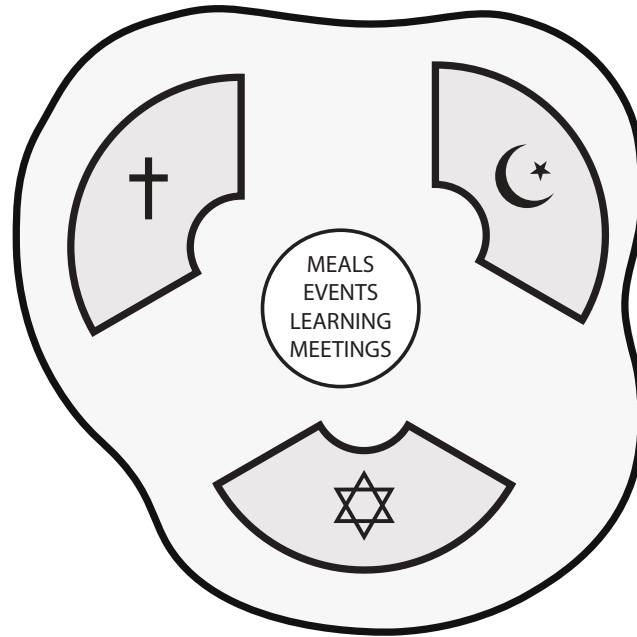
THE ~~CITY~~ RELIGION AS AN EGG

boiled



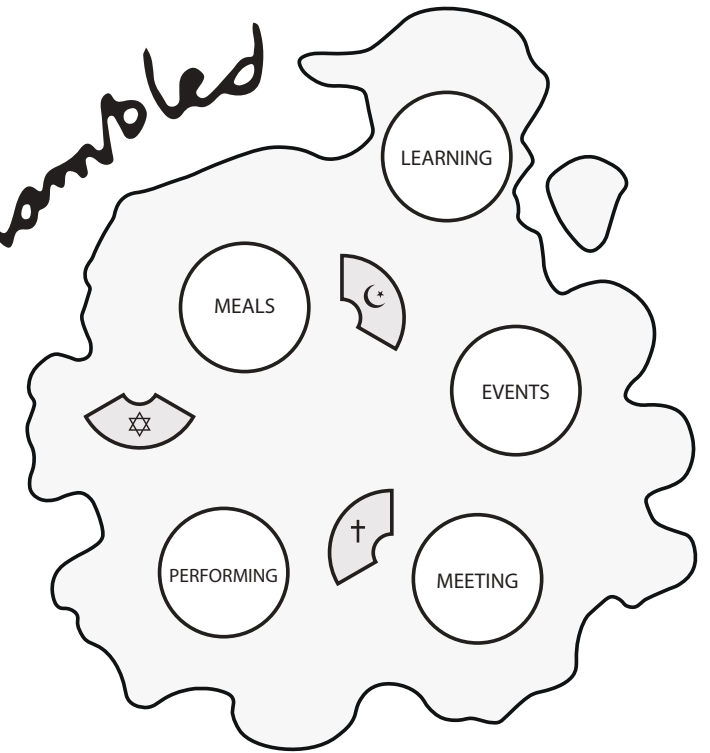
**SPACE ALONE DOESN'T BRING
PEOPLE TOGETHER.
PROGRAM DOES.**

fried

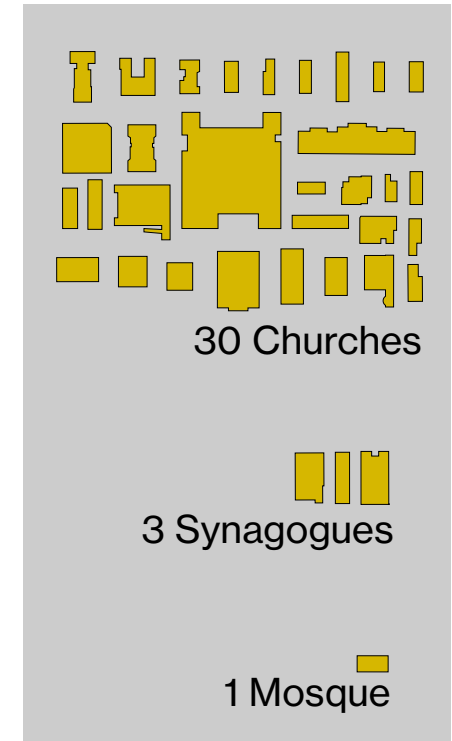


*not only can we separate these
faiths knowing that communal
programming will keep them
connected...*

scrambled

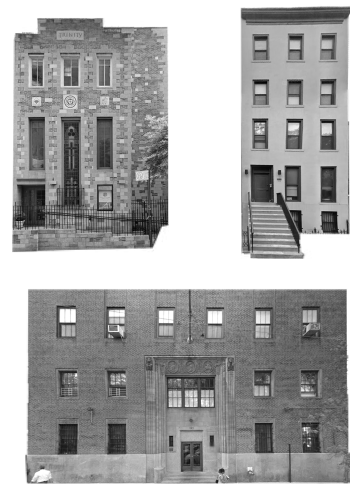


*we can shrink prayer rooms +
expand programming to further
increase opportunities of dialogue
and encounter across religions*



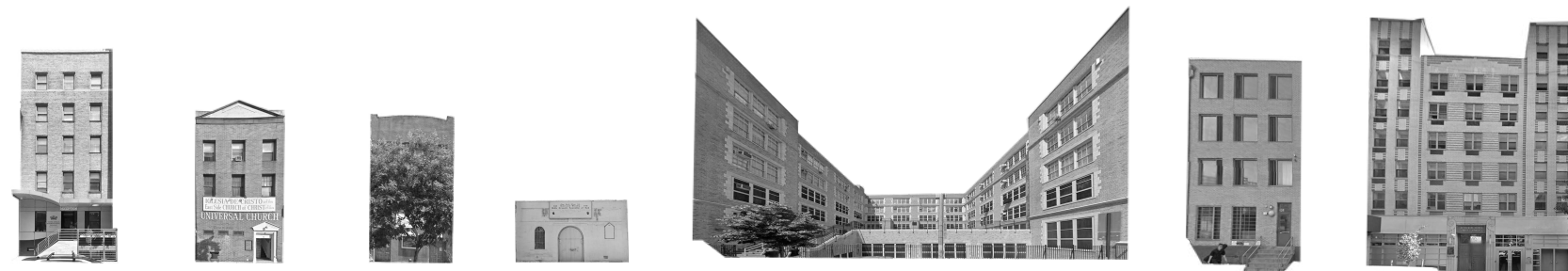
14th St

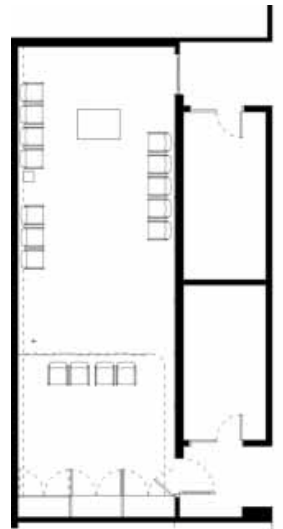
Avenue D



Houston St

2nd Ave





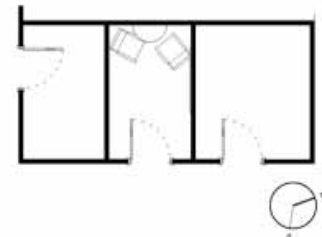
Zurich Airport



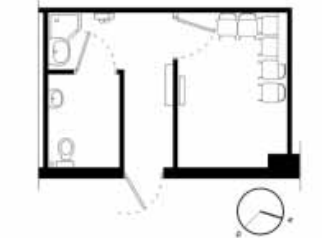
Bolton Market



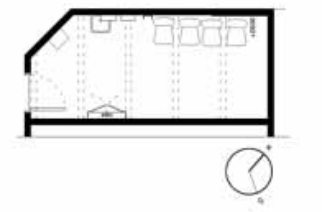
Newcastle Metrocentre



E C Harris Engineers



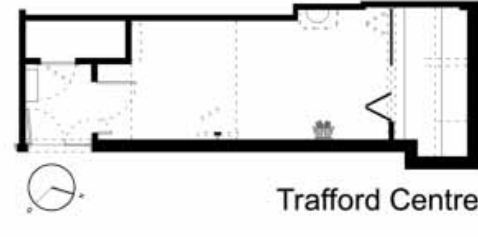
Blackburn Rovers FC



Bolton Wanderers FC



Ardale Shopping Centre



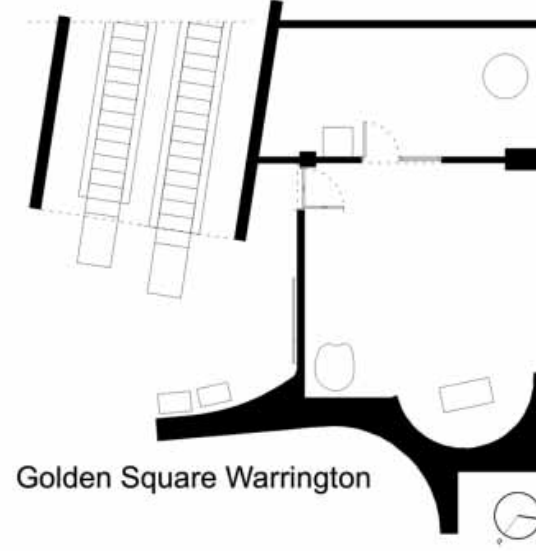
Trafford Centre



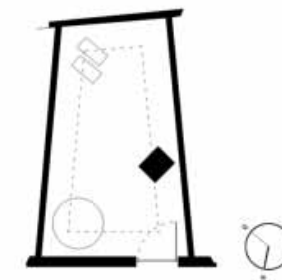
John Lennon Airport



Bushey Field Hospital



Golden Square Warrington



Network Rail



S



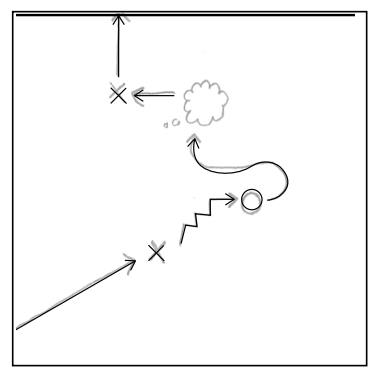
N

M61 Rivington Service Station

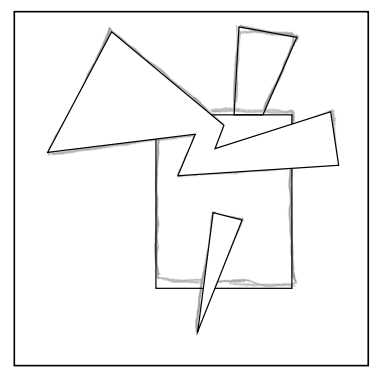


5

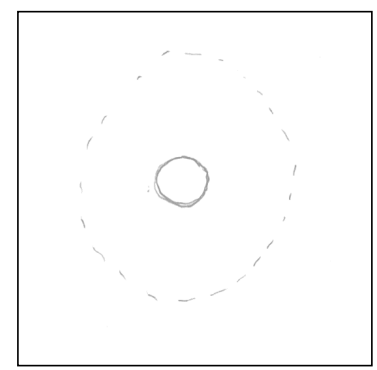
unified
 expressive
 protected
 private
segmented
 interactive
 shared
unapologetic
 undefined
 adaptable
 anachronistic
 eclectic
 universal
 accessible
 divine
 powerful
neutral
 grounded
 sensuous
 exposed
 dignified
 divine
 modernized
 ephemeral
 integrated
 transparent
 heterogeneous
 accommodating
 visionary
 recognizable
 prescriptive
pure
 engaging
collective
intimate
 harmonious
 peaceful
inviting
 imagined
reimagined
 negotiated
 porous
 theatrical
 rooted
expansive
 contained
democratic
 common
 balanced
 dynamic



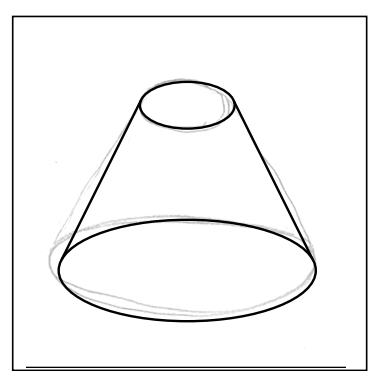
prescriptive



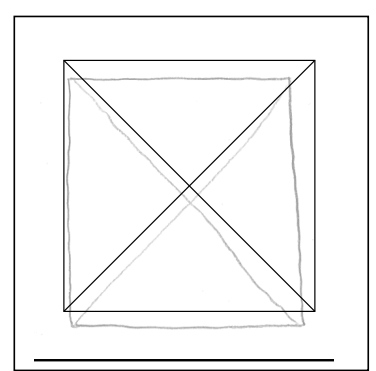
unapologetic



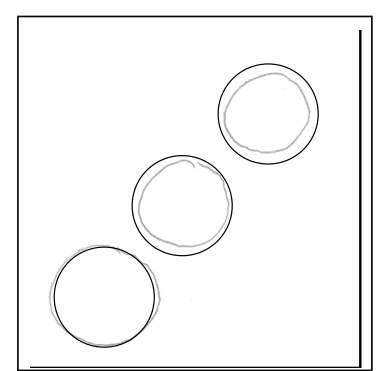
intimate



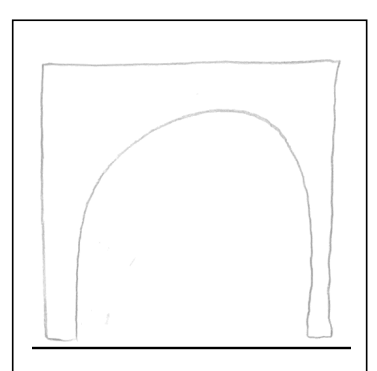
pure



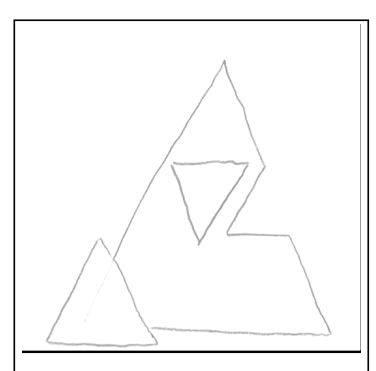
neutral



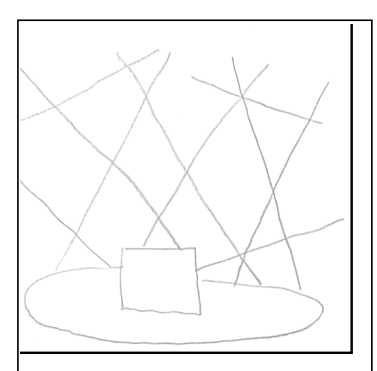
democratic



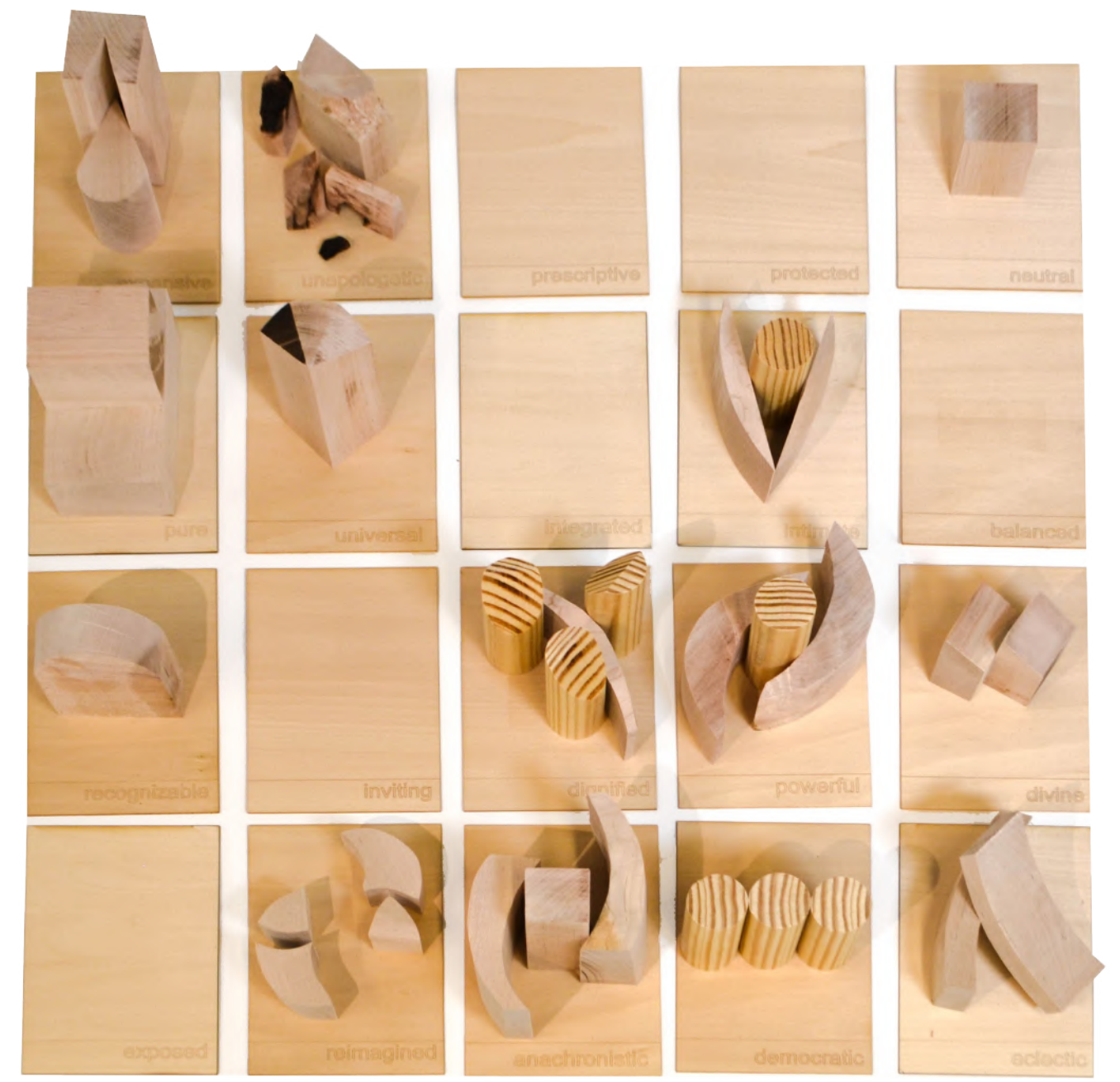
inviting



reimagined

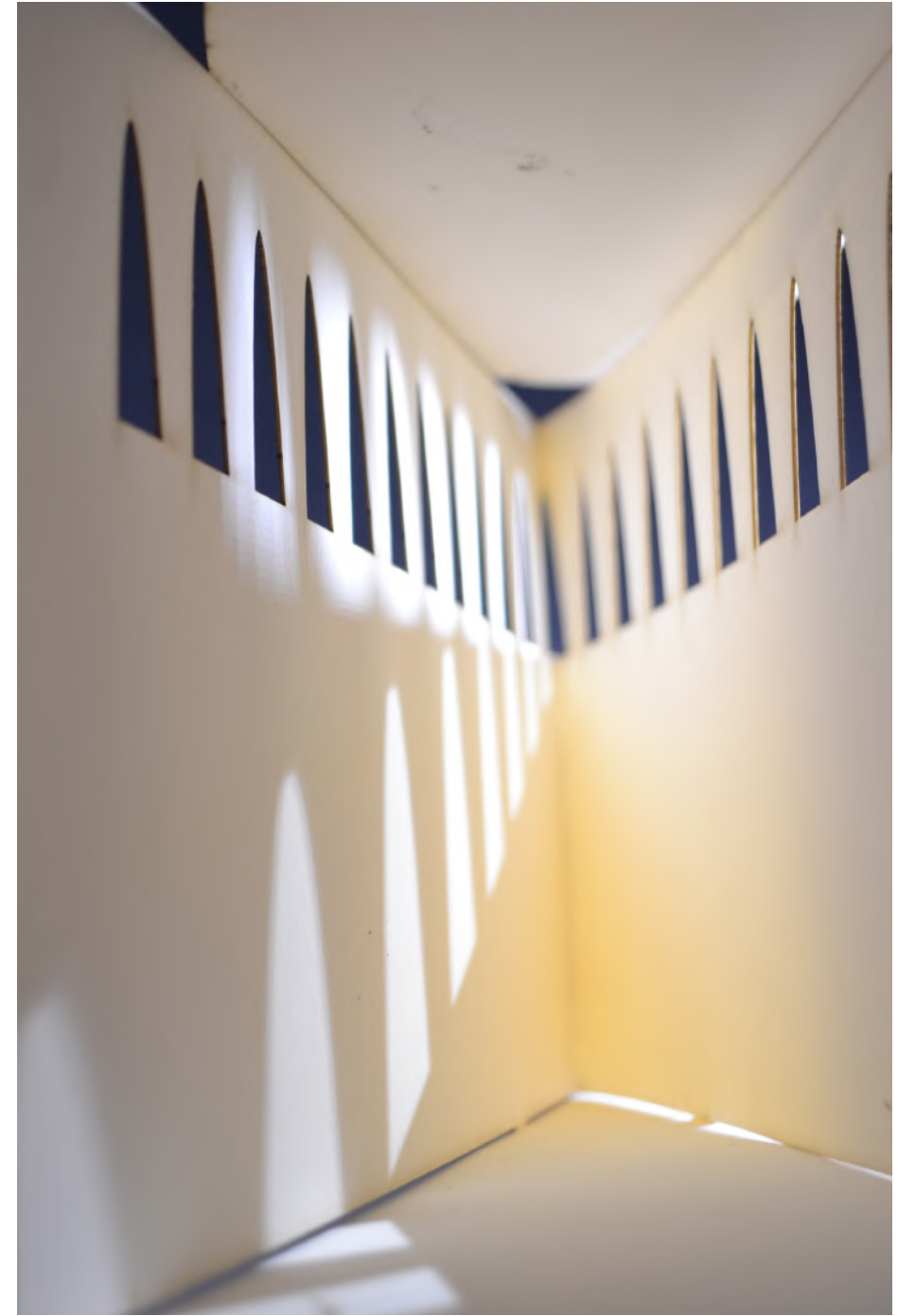


expansive



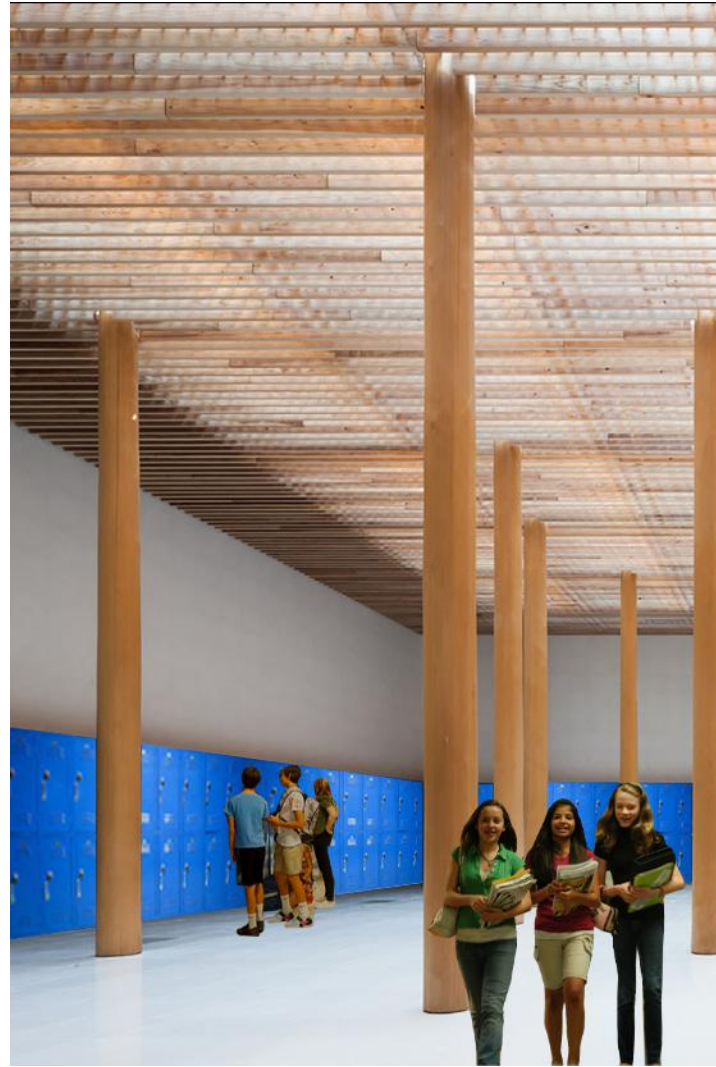


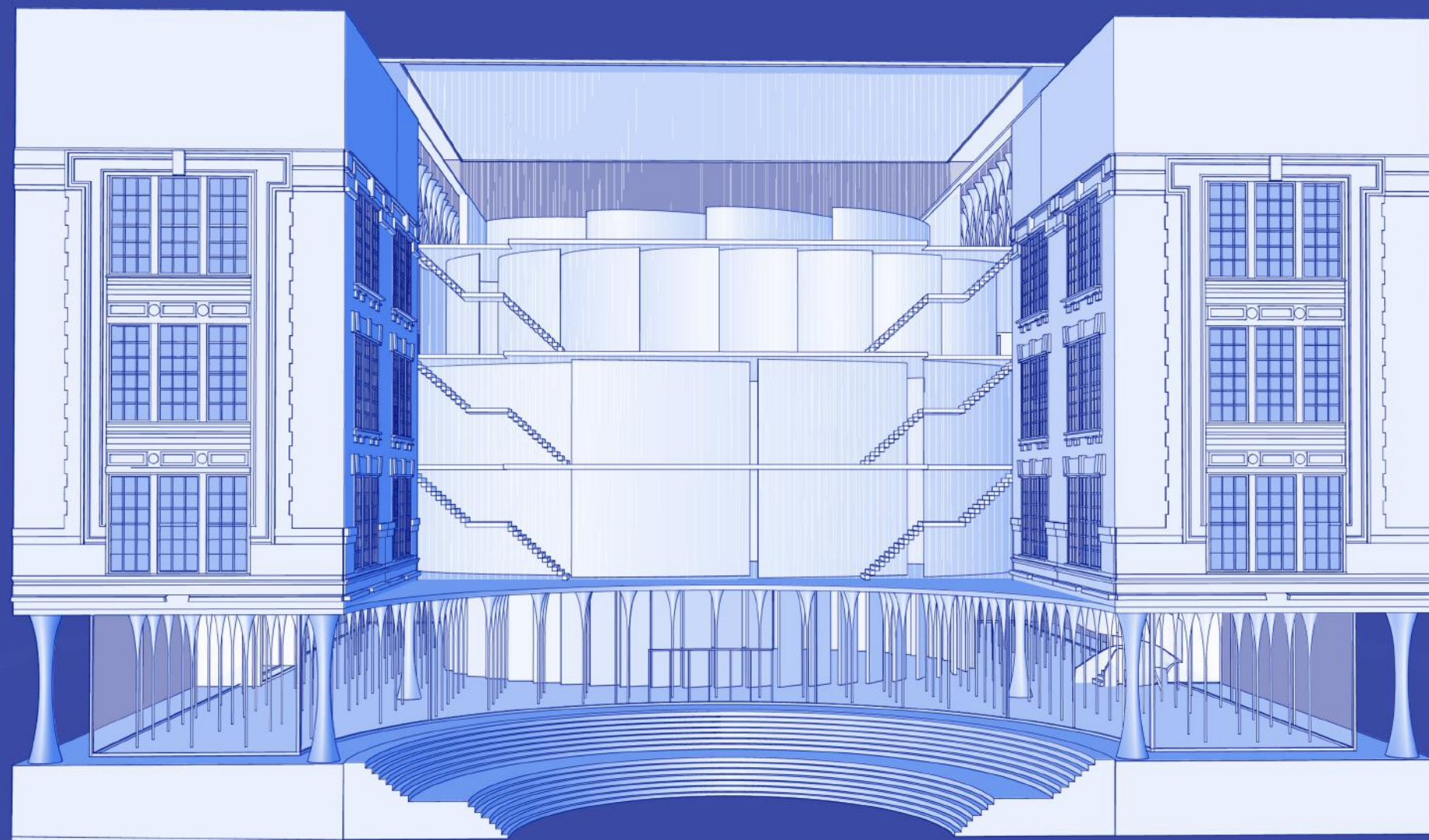




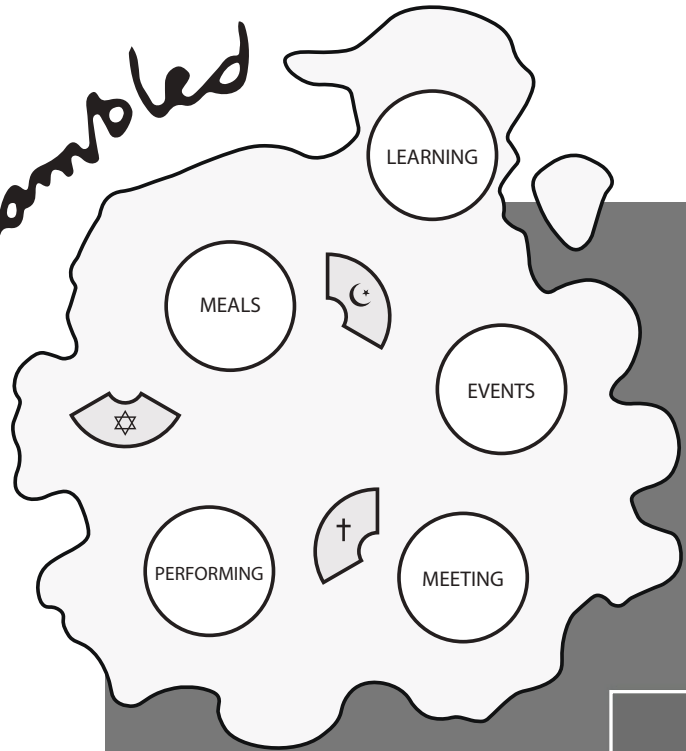








Scrambled



PRAYER

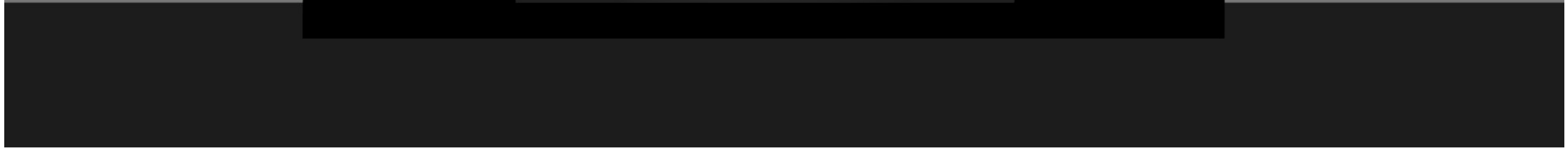
LIBRARY

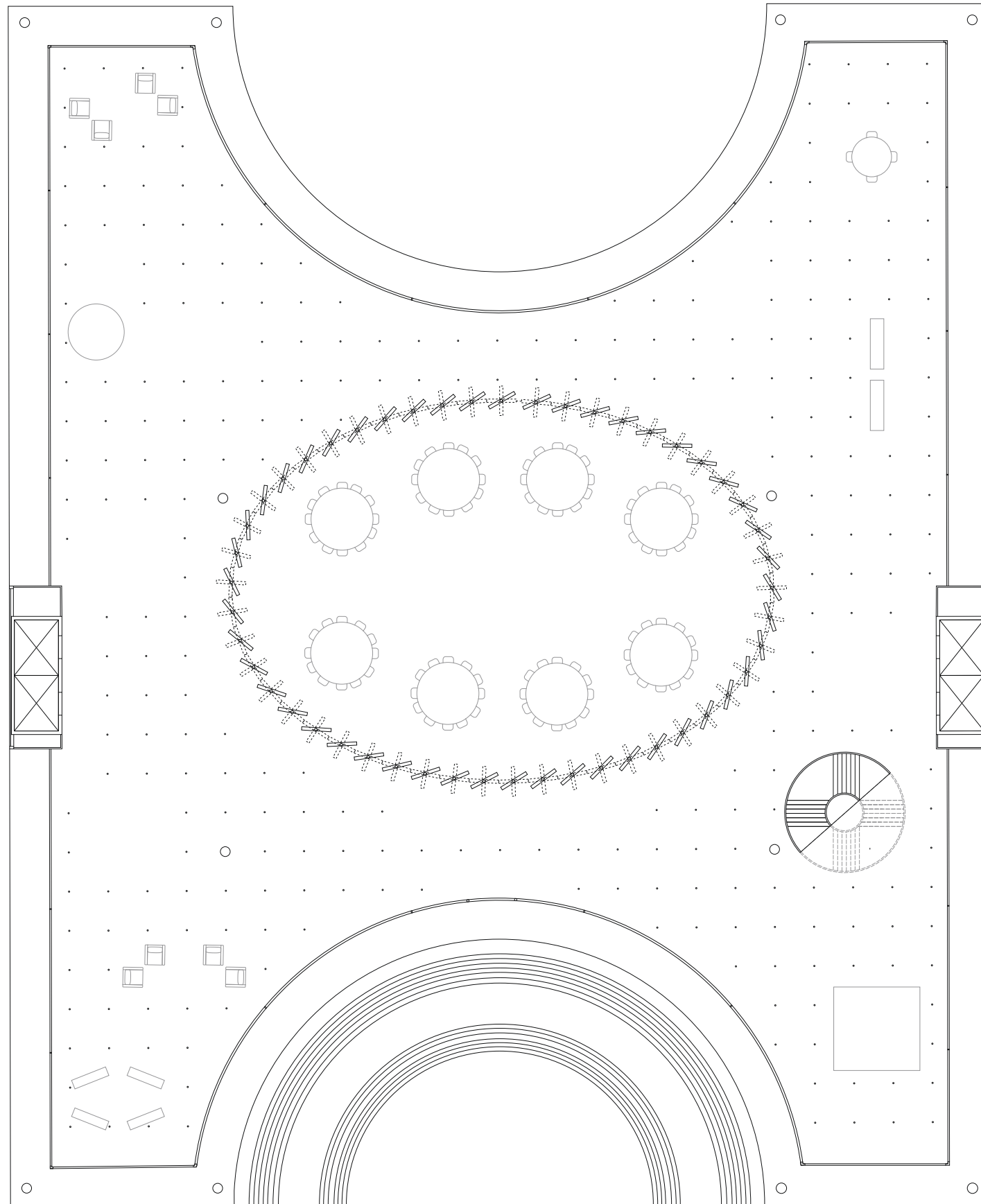
PRAYER

AUDITORIUM

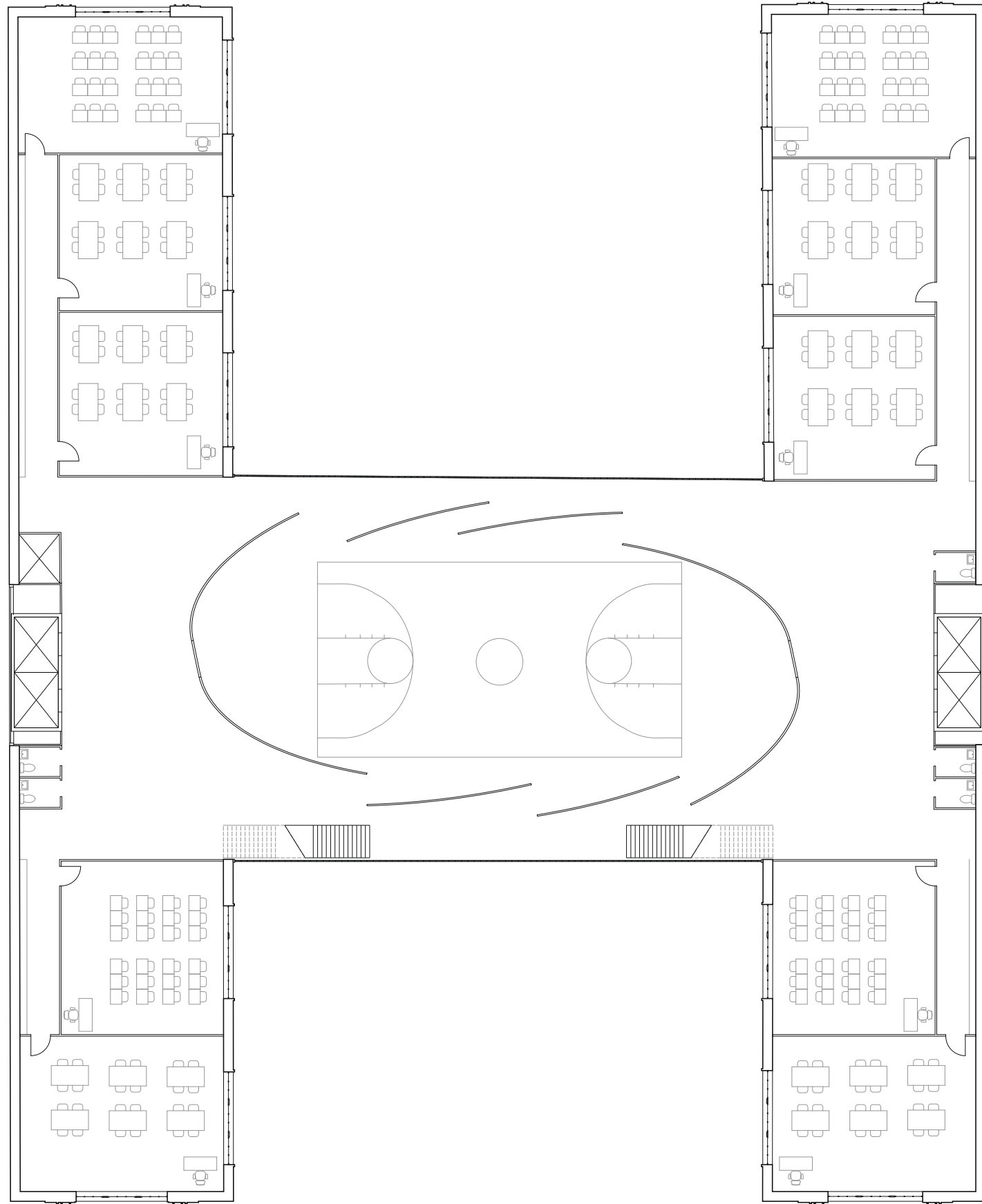
GYM

CAFETERIA

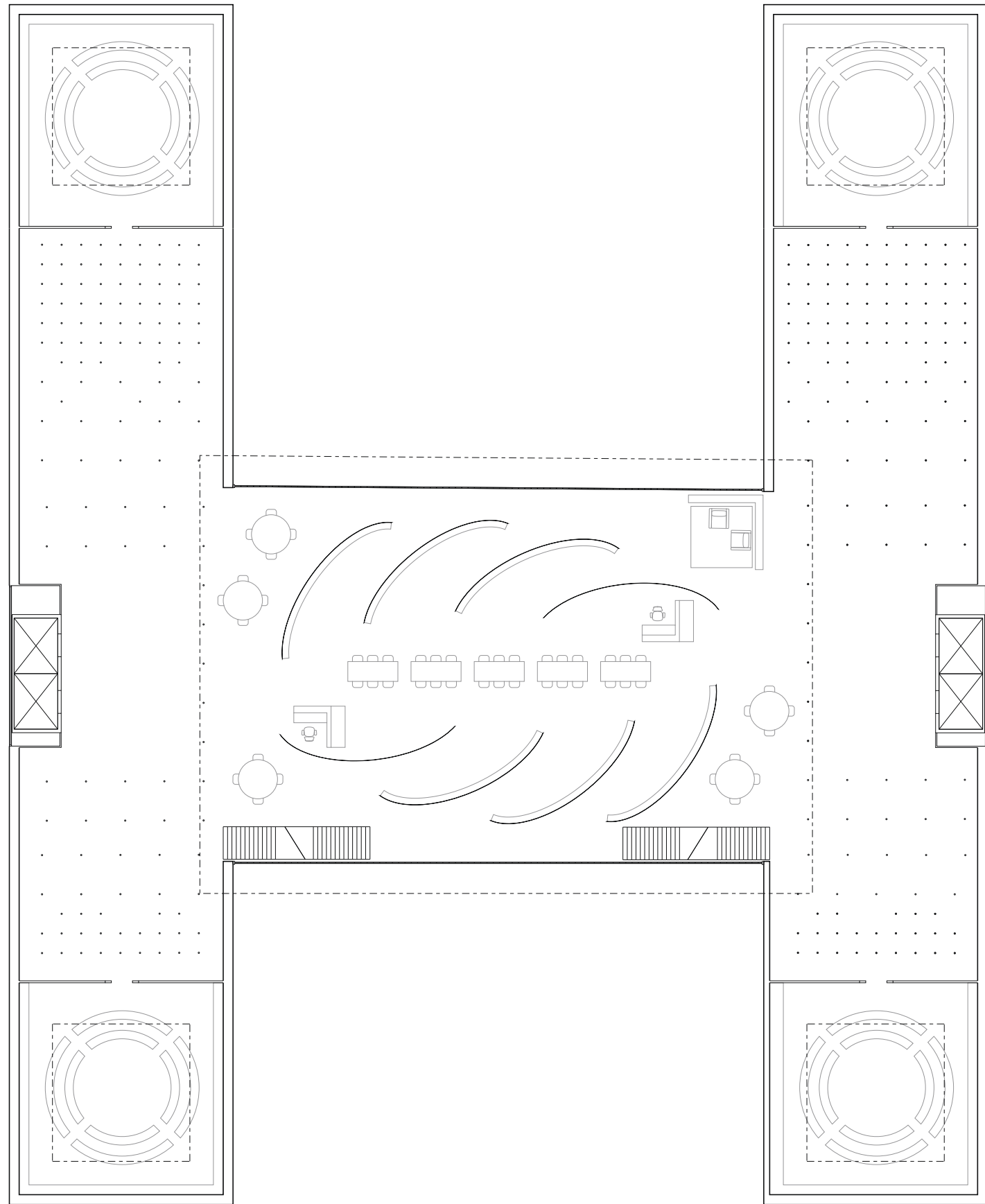




FIRST FLOOR
LOBBY + CAFETERIA



SECOND FLOOR
CLASSROOMS + GYMNASIUM



FIFTH FLOOR
PRAYER ROOMS + LIBRARY



