

Mary Weatherford: Canyon–Daisy–Eden

The Frances Young Tang Teaching Museum and Art Gallery

Skidmore College, Saratoga Springs, NY

February 1 – July 12, 2020

Nagasaki, 1989

Oil on canvas

82 x 82 inches

Collection of the artist



Nagasaki, 1989

Oil on canvas

82 x 82 inches

Collection of Maia Hunter



Her Insomnia, 1991

Flashe and silkscreen ink on canvas

72 x 120 inches

Museum of Contemporary Art San Diego,
1996.27



Third Riddle, 1991
Acrylic and Flashe on canvas
107 x 78 inches
Private collection



5:00 a.m., 1992
Acrylic, Flashe, and ink on canvas
72 x 120 inches
Private collection



Her Clairvoyance, 1993
Flashe and silkscreen ink on jute
39 x 72 inches
Private collection



Night and Day, 1996
Oil and silkscreen on jute
90 x 63 inches
Private collection



Big Red Margaret Head, 1997
Acrylic, Flashe, and starfish on canvas
69 x 96 inches
Collection of Nick Debs



10.26, 1998
Acrylic, Flashe, and starfish on canvas
96 x 69 inches
Collection of Nick Debs



night painting, 2005
Flashe on linen
64 x 69 inches
Private collection



after Hodler, 2006
Flashe on linen
36 x 44 inches
Collection of Alex Israel



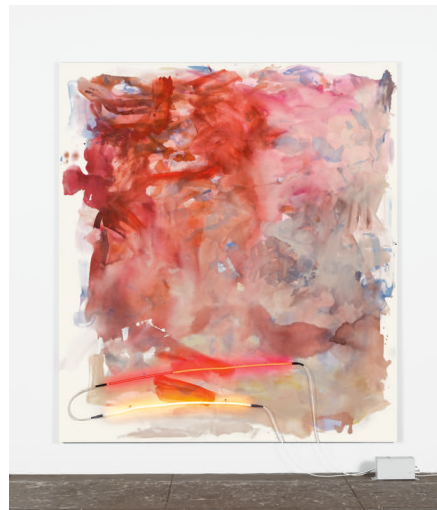
Georgia, 2010
Flashe and starfish on linen
44 x 50 inches
Private collection



Ruby I (Thriftimart), 2012
Flashe and neon on linen
93 x 79 inches
Hammer Museum, Los Angeles. Purchase.



canyon, 2014
Flashe and neon on linen
112 x 99 inches
The Rose Art Museum, Brandeis University,
Mortimer & Sara Hayes Acquisition Fund



lovely day, 2015
Flashe and neon on linen
104 x 117 inches
Collection of the artist



Salon wall

Violetta, 1991
Acrylic, Flashe, and silkscreen ink on
canvas
39 x 72 inches
Private collection



Sister Morphine, 1993
Ink, silkscreen and Flashe on canvas
32 x 25 inches
Private collection



Deliverance, 1994
Flashe, Xerox, and starfish on jute
18 x 24 inches
Collection of the artist



Sugar Mountain, 1994
Xerox transfer, acrylic, oil, and seashells on jute
24 x 30 inches
Private collection



Blue Night Moth, 1995
Acrylic, snails, paper, and Flashe on canvas
9 x 13 inches
Private collection



Flesh Garden, 1995
Flashe and silkscreen on jute
13 x 20 inches
Private collection



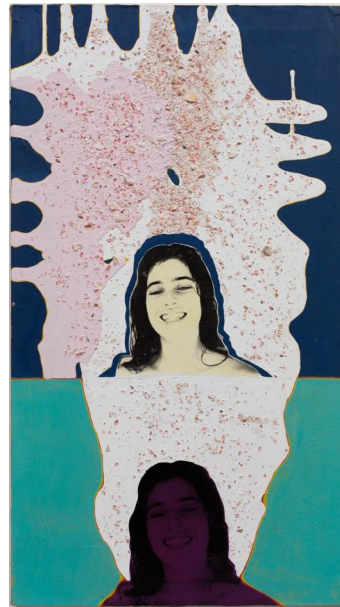
Missing Margaret, 1995
Flashe and starfish on jute
21 x 27 inches
Collection of the artist



Any Cat Stevens Song, 1996
Vinyl and silkscreen on jute
55 x 66 inches
Collection of the artist



Double Margaret, 1996
Seashells, acrylic, oil, silkscreen, and Xerox transfer on canvas
36 x 20 inches
Private collection



My Dalí, 1996
Oil, seashells, starfish, and Flashe on jute
15 x 18 inches
Private collection



Supernatural, 1998

Acrylic transfer and sand dollars on jute

34 x 40 inches

Private collection



Sweet, 1998

Flashe and seashells on jute

9 x 11 inches

Private collection



absorbent, 2000

Flashe and sponges on canvas

66 x 82 inches

Collection of the artist



Another yellow day, 2000

Flashe on canvas

16 x 20 inches

Private collection



beach, 2000
Flashe on canvas
60 x 49 inches
Private collection



Boat race, 2000
Flashe on canvas
16 x 20 inches
Private collection



double green, 2000
Flashe and starfish on canvas
16 x 20 inches
Private collection



White Air (flies and mussels), 2000
Flashe and seashells on jute
9 1/4 x 11 inches
Private collection



White Air (flies and mussels), 2000
Flashe and seashells on jute
9 1/4 x 11 inches
Private collection



another sponge painting, 2000
Flashe and sponges on jute
6 1/2 x 12 1/8 x 3 inches
Collection of Ruth Root



Midnight toker, 2001
Flashe, sequin, and feather on jute
12 1/2 x 15 1/2 inches
Private collection



Untitled, 2001
Flashe on jute
16 x 20 inches
Private collection



town and country, 2002
Flashe on canvas
42 x 40 inches
Private collection



Bird, 2001
Flashe and sequin on canvas
30 x 40 inches
Collection of Rebecca Morris



the ivy mesh, 2004
Flashe on jute
12 x 24 inches
Private collection



black cat, 2003
Flashe and seashells on jute
16 x 20 inches
Collection of Katherine Bernhardt



Arrangement, 2009
starfish, sponge, Flashe on jute
10 x 10 inches
Collection of Art Design Office, Los Angeles

