

Future ●

Expansion



2021



Residential Project Samples



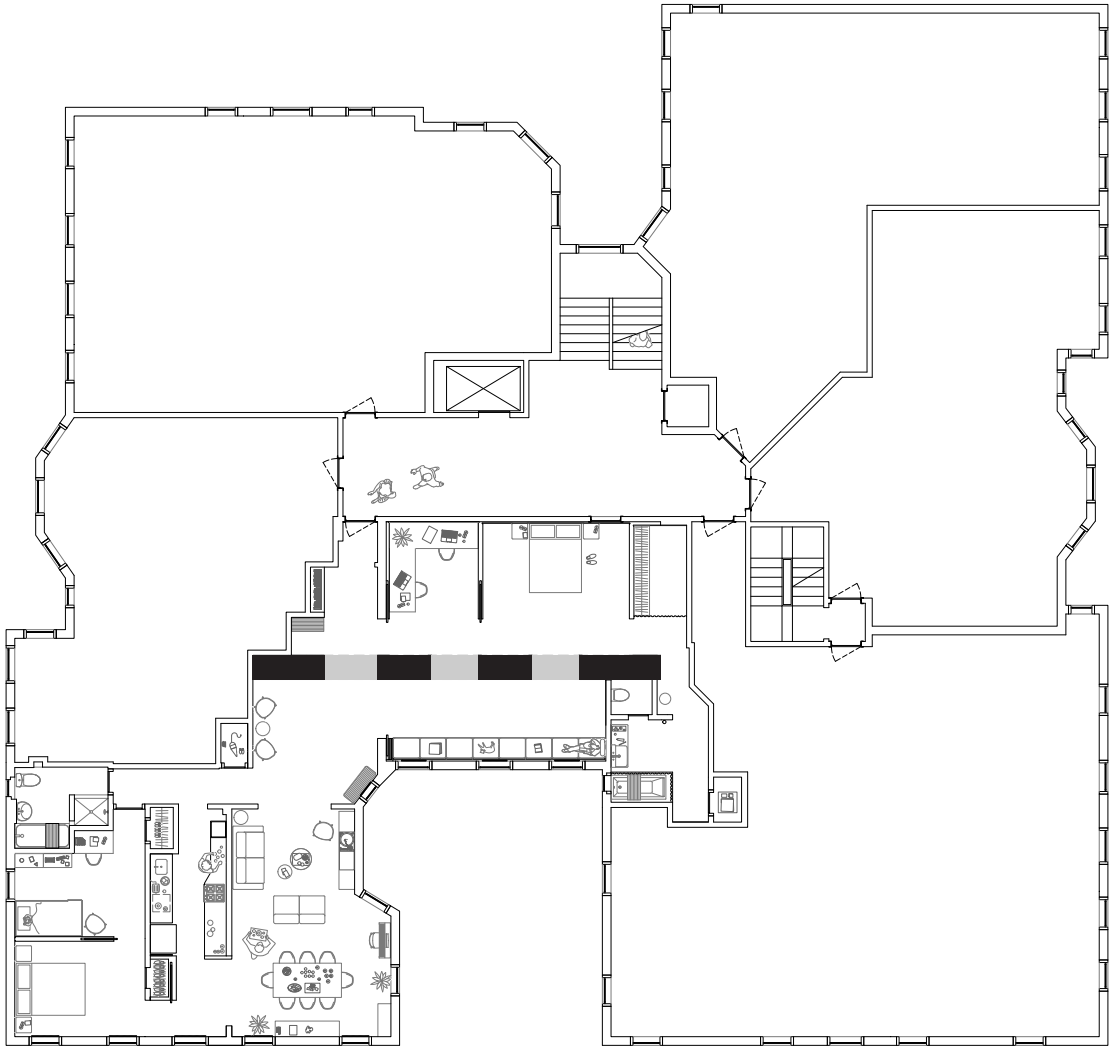
JACKSON HEIGHTS

- Apartment Combination •
- Private Client • 2019

A long millwork wall is the centerpiece of this apartment renovation in Queens. The wall makes its way through a variety of spaces, creating a loose set of relationships. Panels slide and fold to variously connect and (momentarily) separate different areas within the apartment.



The existing one bedroom apartment and a neighboring studio shared a wall but the living spaces were far from each other.



In the design, the old party wall was removed and the new volume brings the two apartments together around shared uses and space.





The millwork wall offers two distinct states of operation, producing two different ways to use the apartment.











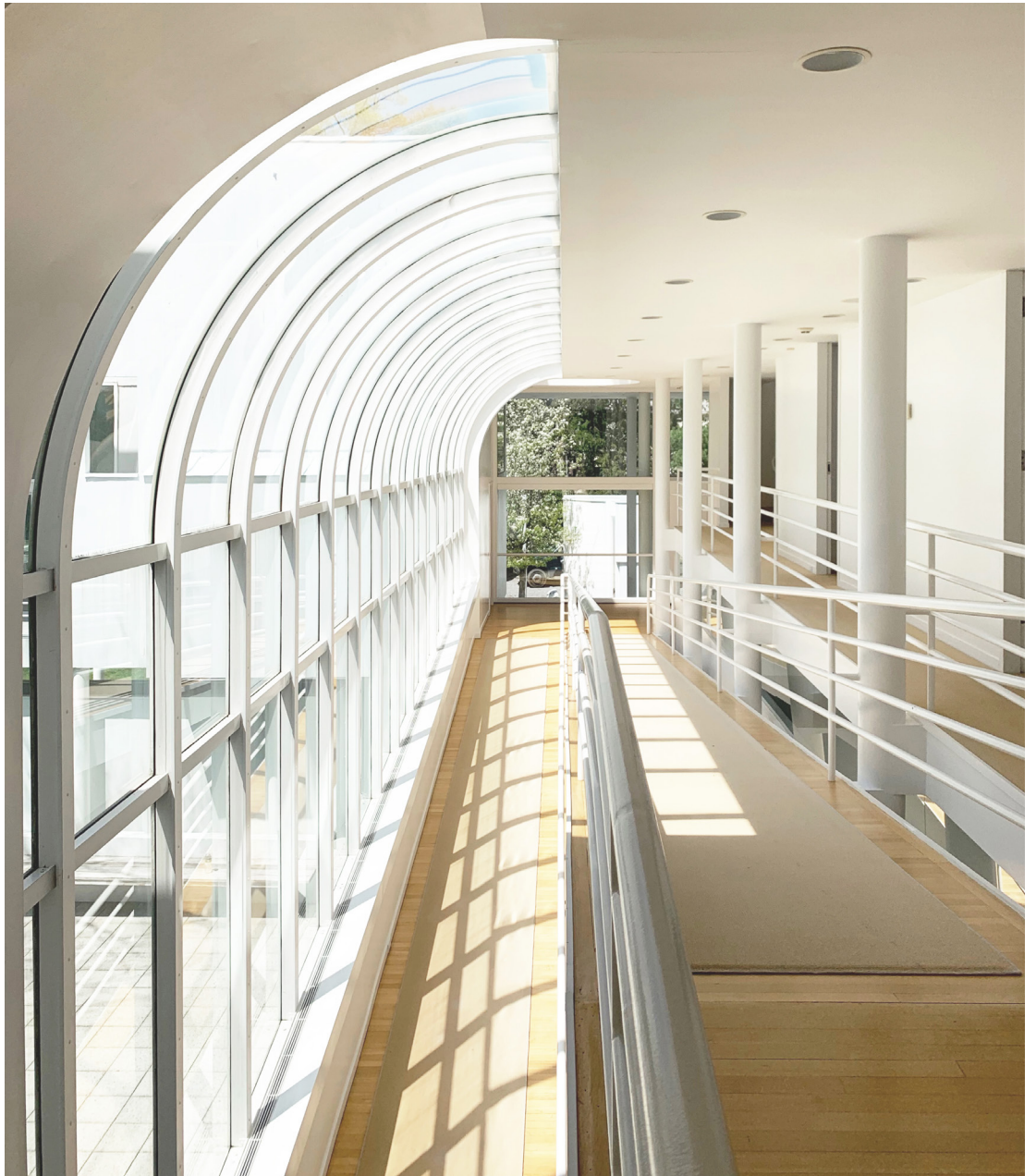
OLD WESTBURY

• House Renovation •
Private Client • 2021

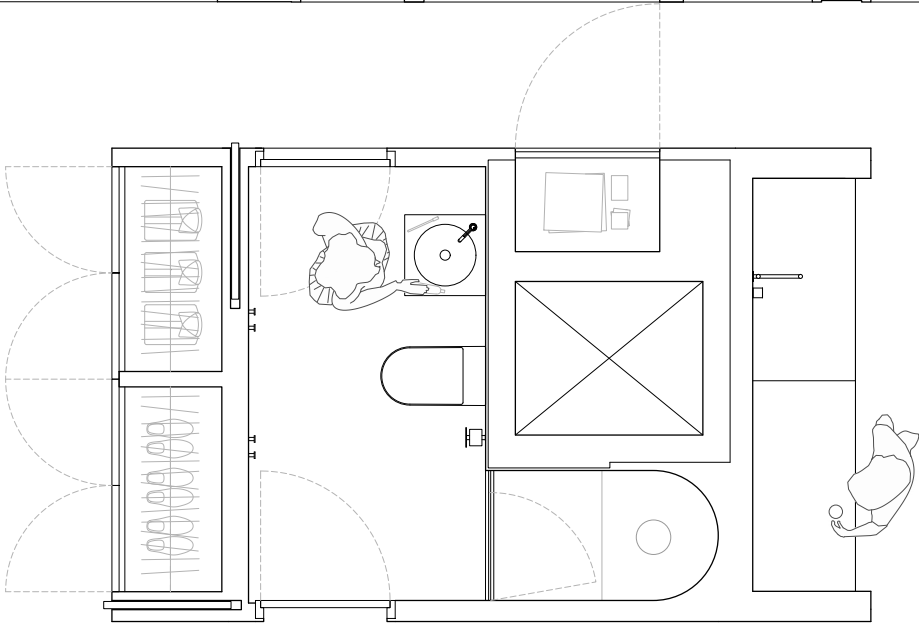
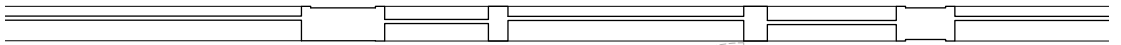
A young gallery owner purchased a 1970's house in suburban Long Island with the goal of creating a mix of social spaces, areas for displaying art, and places for living. Our interior and exterior renovations riff on the restraint of the original palette while making space for new uses.



The new mezzanine volume sits just off of the main circulation ramp through the house.



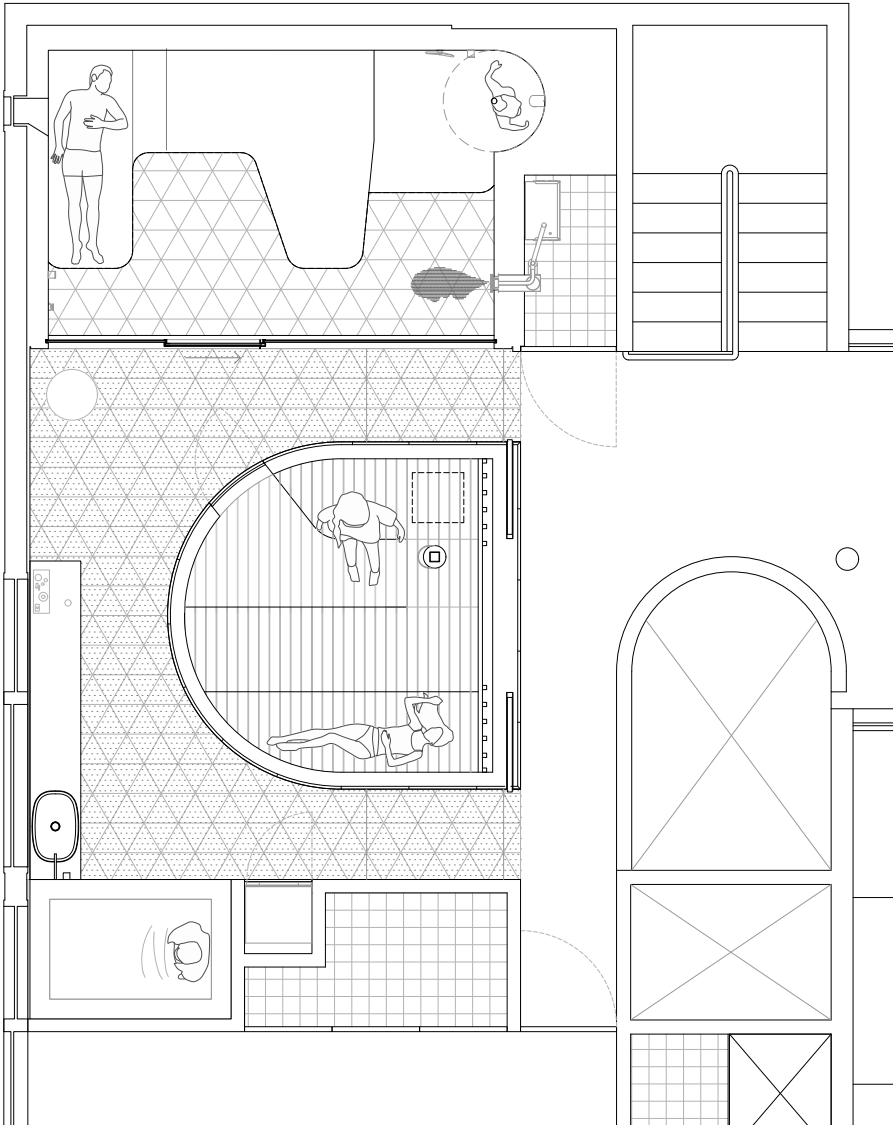




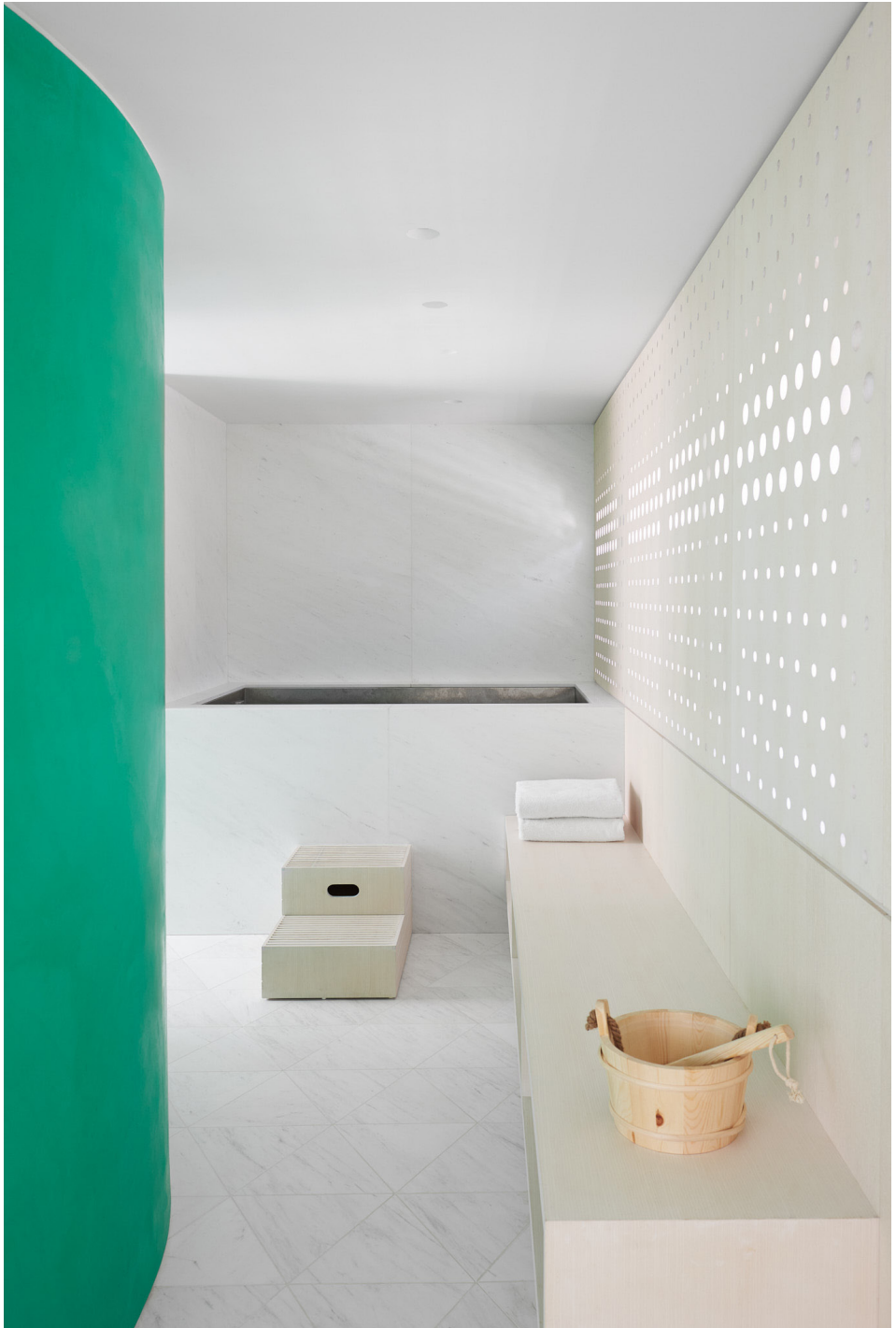
**A new volume on the mezzanine
nests functional elements together
with a quartz clad wetbar.**







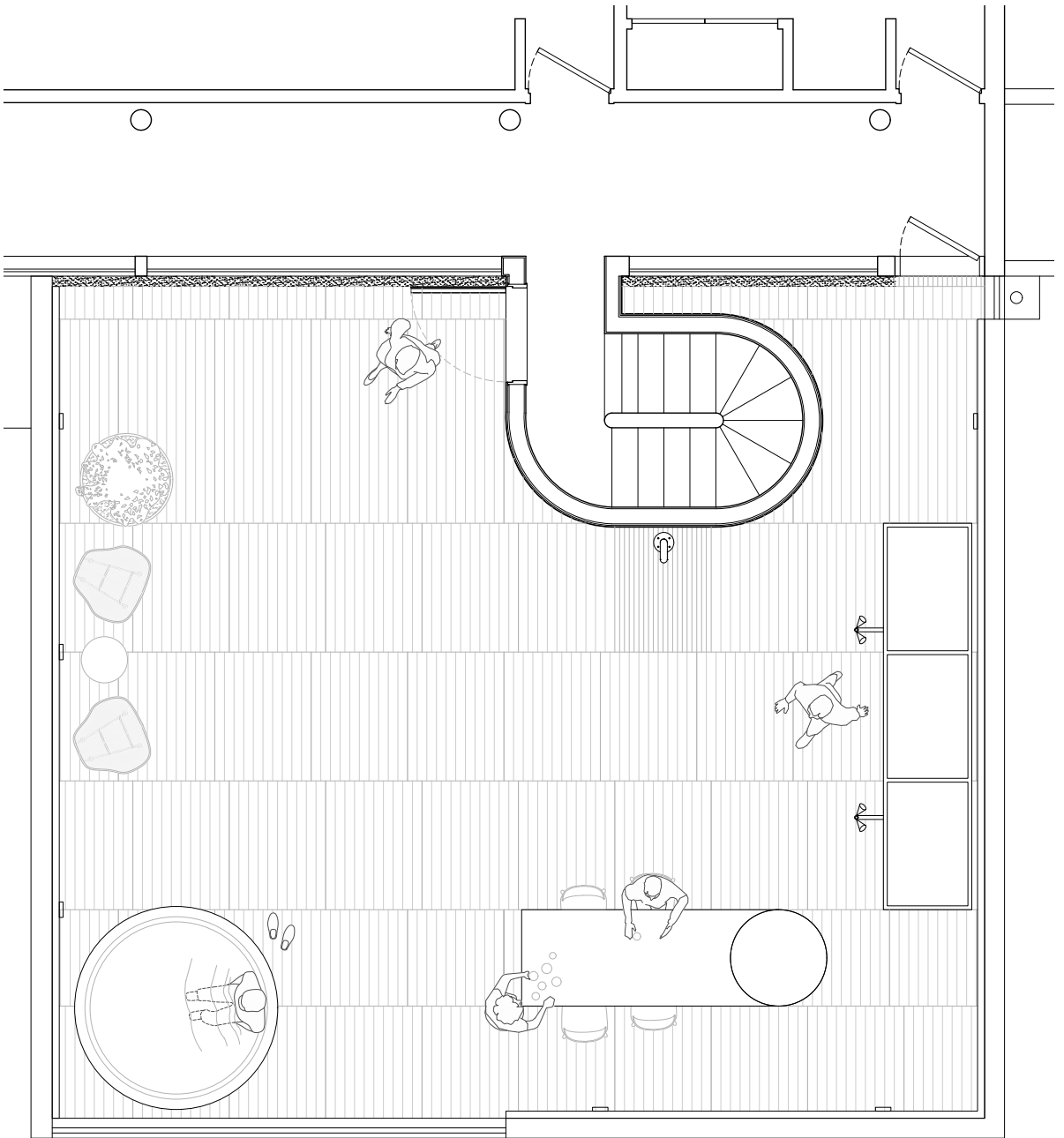
The spa includes a curved sauna volume, a cold plunge that is recessed into the wall, and a steam room.







The interior of the curved cedar sauna volume next to the concrete bench in the steam room.





The roof deck is designed with an outdoor shower, a wood-clad hot tub, and a table cantilevered from the original chimney.



DRAPE STAIR

Chelsea • Private Client

• 2020

A new stair commissioned by a pastry chef for their family home in Manhattan. The stair is a sculptural element in an otherwise restrained space.



**The stair railing is modeled on folded pastry.
The folds give the thin steel visual softness and
structural strength.**









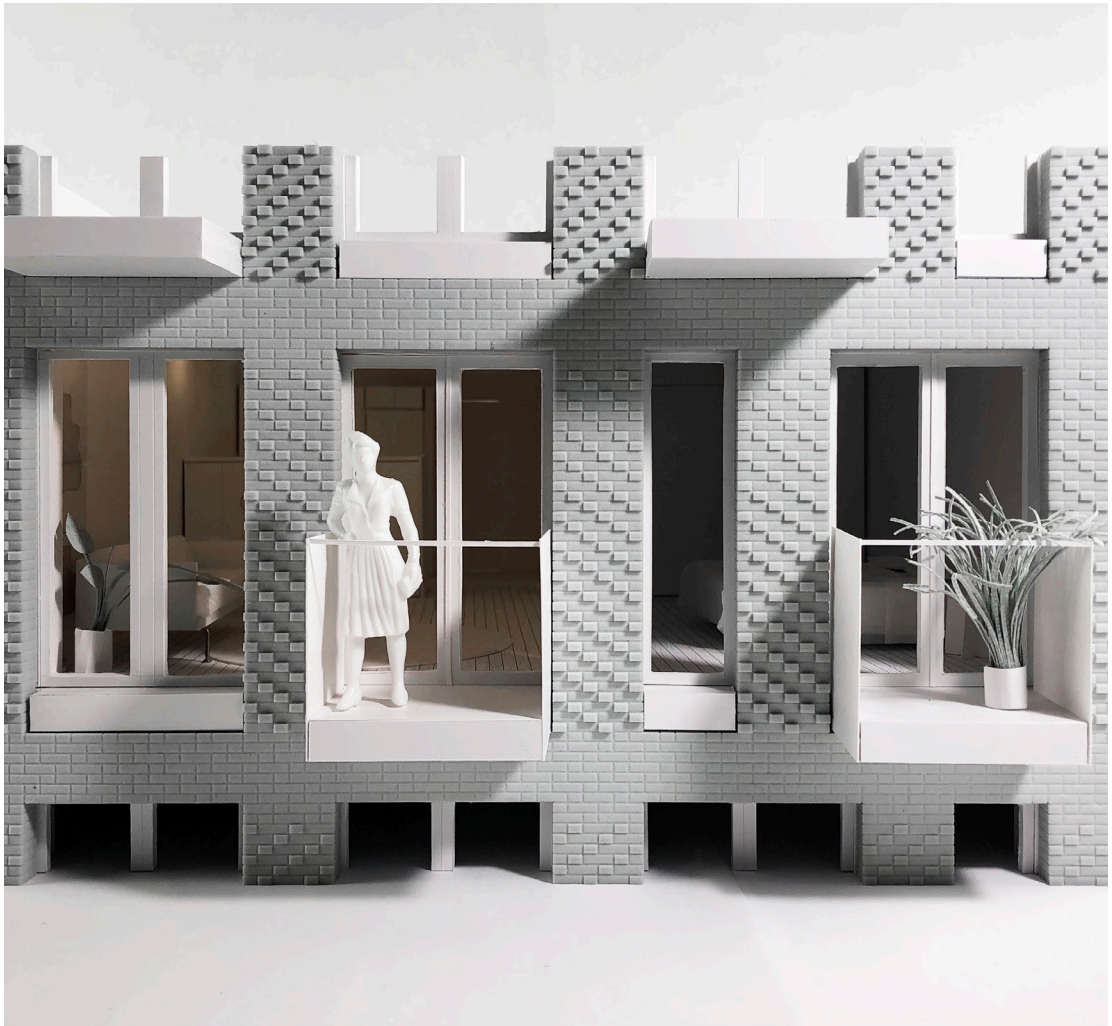
Works In Progress





Construction photos, October 2021

Community structures and small homes for a land cooperative near the Delaware River.



Construction photo and detail model

A sixty-seven unit apartment building on the Astoria waterfront.







Photos of lobby and pantry

A renovation for a commercial building in Manhattan that proposes a new life for an old office.



Construction photo and rendering

**A townhouse renovation in Windsor Terrace,
Brooklyn with a light well connecting the
cellar to the roof.**







Design renderings

A two-floor penthouse renovation near Prospect Park re-imagines a more connected and open version of home.



**Public,
Commercial &
Institutional
Samples**



FLATIRON REFLECTION • Installation • Van Alen Institute • 2018

Our very first project was a year long public art installation for the Brooklyn Academy of Music. More recently we won a commission to build a pavilion next to the Flatiron Building made from paper tubes wrapped in mylar. The project supports the public life of the plaza and creates reflections of the city.



The conical space at the center of the pavilion creates panoramic views of the site while trimming out the foreground noise of the street.





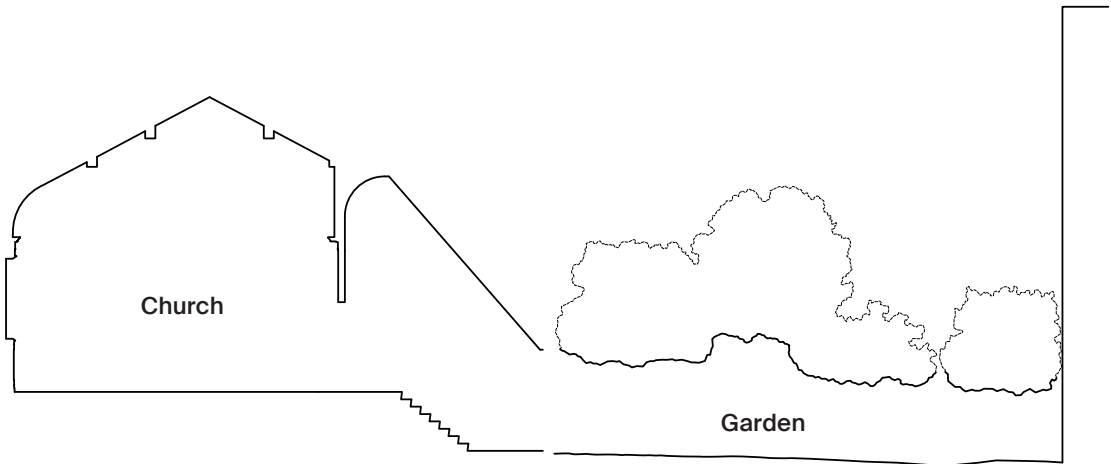




COMMUNITY CHURCH

• Park Slope United Methodist Church • 2020

We recently completed an addition for a local church that provides universal accessibility into the building and an adjacent garden. The church is a vibrant community hub that houses a daycare, theater performances, and meeting space for social advocacy group. Our new entry opens the church's spaces to all users.



The addition reorients the building from an old entry on the corner to a new entrance between the church and an adjacent garden.







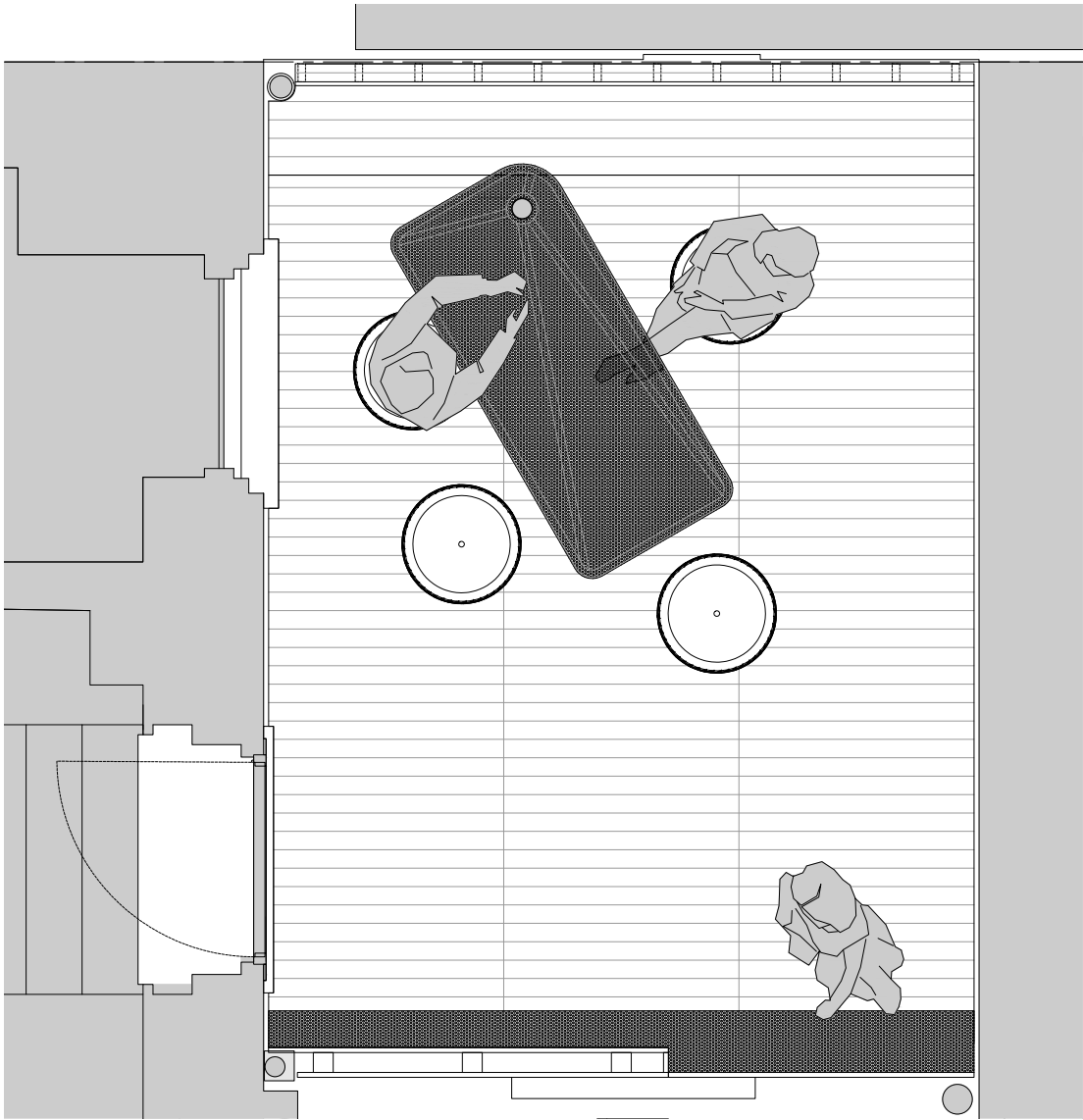
The addition extends the logic and form of the sanctuary ceiling beyond the old walls and into the garden so it is visible from the street for the first time.



RAUSCHENBERG FOUNDATION

- **Office Renovations**
- **Manhattan**
- **2017**

We were commissioned to renovate the executive office floor and an adjacent exterior space at the Robert Rauchenberg Foundation’s Manhattan HQ. An oddly incomplete chapel window on a wall of the exterior space reminded us of the artist’s comment that “a picture is more like the real world when it’s made out of the real world.” We used that as inspiration for an architectural strategy of reuse and reworking.



A column from an abandoned fire escape was repurposed as structure for a new rotating table (AKA the Rotable) on a small roof space between the foundation's two buildings.





The painted arch pattern continues to meet the original arched window beyond the terrace.







The renovated executive offices are designed with an openness and flexibility that accommodates the hanging and rehung of pieces from the artist's archive.



Office Profile

Future Expansion (FE) is a Brooklyn based architecture office founded on the belief that the future provides us with the opportunity to constantly improve on the past, that previous solutions should not preclude new inventions, and that architecture and urban design are meaningful cultural tools in this endeavor.

FE works on projects with private clients, institutions, non-profits, and developers. The office is led by Deirdre McDermott (AIA) and Nicholas McDermott (RA, LEED AP). We are a registered Woman-Owned Business Enterprise (WBE) in New York City.





Future Expansion
37A 9th Street #1, Brooklyn NY 11215
info@future-expansion.com
646-687-7883