The background is a reproduction of Titian's painting 'Venus and Cupid'. It depicts Venus reclining on a rock, surrounded by several winged Cupids. One Cupid is aiming a bow at the top left, while others are playing musical instruments or holding objects. The scene is set against a dramatic, cloudy sky with a landscape visible in the distance.

JUNE 25 – 30, 2022
MECC, MAASTRICHT
TEFAF.COM

TEFAF MAASTRICHT HIGHLIGHTS

RARE HISTORICAL DISCOVERIES AND UNPARALLELED MASTERPIECES MARK TEFAF MAASTRICHT'S RETURN FOR ITS 35TH EDITION

Amsterdam, NL (June 24, 2022): The European Fine Art Foundation (TEFAF) returns to Maastricht in signature style, revealing a selection of recent discoveries and masterpieces for the 35th edition of TEFAF Maastricht, which runs from June 25 – 30, 2022. The invitation- only Preview Days take place June 24, and until 2pm on June 25, 2022. TEFAF Maastricht is unrivalled in terms of the breadth and depth of both the works and exhibitors presented at the fair.

Alongside the world's leading dealers, TEFAF Maastricht also welcomes the Museum Boijmans van Beuningen to this year's fair. The museum will present the painting, *Poplars near Nuenen*, by Vincent van Gogh (1885) in the entrance to the fair prior to its restoration which has been supported by TEFAF's Museum Restoration Fund, celebrating its 10th anniversary this year. Additionally, TEFAF Maastricht will present a robust program of talks and events in a newly created lecture theatre. Further details on programming can be found at [TEFAF.com](https://tefaf.com)

A selection of highlights which will be shown at the fair follow.



Artemisia Gentileschi (1593 – 1654)

Self Portrait of the artist as Cleopatra on her deathbed, claspng a viper

Circa 1620

Oil on canvas

114 x 75 cm (44.9 x 29.5 in.)

PRESENTED BY JEAN-FRANCOIS HEIM, BOOTH 360

Copyright Jean-Francois Heim

Jean-Francois Heim presents a self-portrait from Italian artist Artemisia Gentileschi. A large number of Gentileschi's oeuvre consist of paintings featuring empowered female protagonists, and in this work the artist is portrayed as Cleopatra on her deathbed.



Jan Frans van Dael (1764 – 1840)

Still life of poppies, a tulip, hollyhocks, roses, peonies, auriculas and other flowers in a terracotta vase on a stone ledge

Circa 1830

Oil on canvas

93 x 75.6 cm (36.6 x 29.8 in.) Frame 113.3 x 95.3 cm (44.6 x 37.5 in.)

PRESENTED BY RICHARD GREEN, BOOTH 301

Richard Green presents a still life of a lavish bouquet by Jan Frans van Dael. In this painting van Dael pays homage to a variety of flowers with at least 20 varieties present and paints every species in pristine perfection. Jan Frans van Dael was one of the most highly regarded painters of still lifes of flowers and fruit in Paris during the late eighteenth and early nineteenth centuries.



Michaelina Wautier (1604 – 1689)

Portrait Historié of a Man as Jacob, Husband of Rachel

Circa 1655-1660

Oil on canvas

62 x 76.5 cm (24.4 x 30.1 in.)

PRESENTED BY BIJL-VAN URK BV, BOOTH 330

Copyright René Gerritsen

Bijl-Van Urk exhibits a work by Flemish female painter, Michaelina Wautier. This portrait represents an important addition to the oeuvre of Michaelina, who has only recently received recognition. The Portrait Historié of a Man as Jacob is a new showpiece of her exceptional talent for portraiture.



Jan Lievens (1607 – 1674)

Portrait of Admiral Maarten Harpertszoon Tromp

Circa 1652/1653

Black chalk on cream paper

31.0 x 31.1 cm (12.2 x 12.2 in.)

PRESENTED BY CHRISTOPHER BISHOP FINE ART, BOOTH 728

Christopher Bishop Fine Art presents a rediscovered work by Jan Lievens, which has been missing since 1888. Portrait of Admiral Maarten Harpertszoon Tromp has been copied through history and is one of The Netherlands' most beloved engravings. The original drawing's location was unknown until the recent rediscovery in 2020.



Gustave Courbet (1819 – 1877)

Jeune Fille Dormant

1847

Oil on canvas

38.1 x 44.5 cm (15 x 17.5 in.)

PRESENTED BY GALLERY 19C, BOOTH 313

Gallery 19C presents a work by French painter Gustave Courbet. Courbet is known for his work with sleeping female subjects, this particular work, 'Young Girl Sleeping', is one of Courbet's earliest paintings to explore the theme of a woman asleep.



Lippo D'Andrea di Lippo

Madonna and Child Enthroned with St. Lawrence, St. Sebastian, St. Margaret and St. Nicholas of Bari

Circa 1420

Tempera on panel and gold ground

64 x 39 cm (25.2 x 15.4 in.)

PRESENTED BY SALAMON, BOOTH 354

Salamon presents a small altarpiece by Florentine painter Lippo d'Andrea. This style of altarpiece was intended for private devotion and popular in Florence for a hundred years from the second half of the fourteenth century.



Giorgio De Chirico (1888 – 1978)

Il Ritorno del figliol prodigo (The Return of the Prodigal Son)

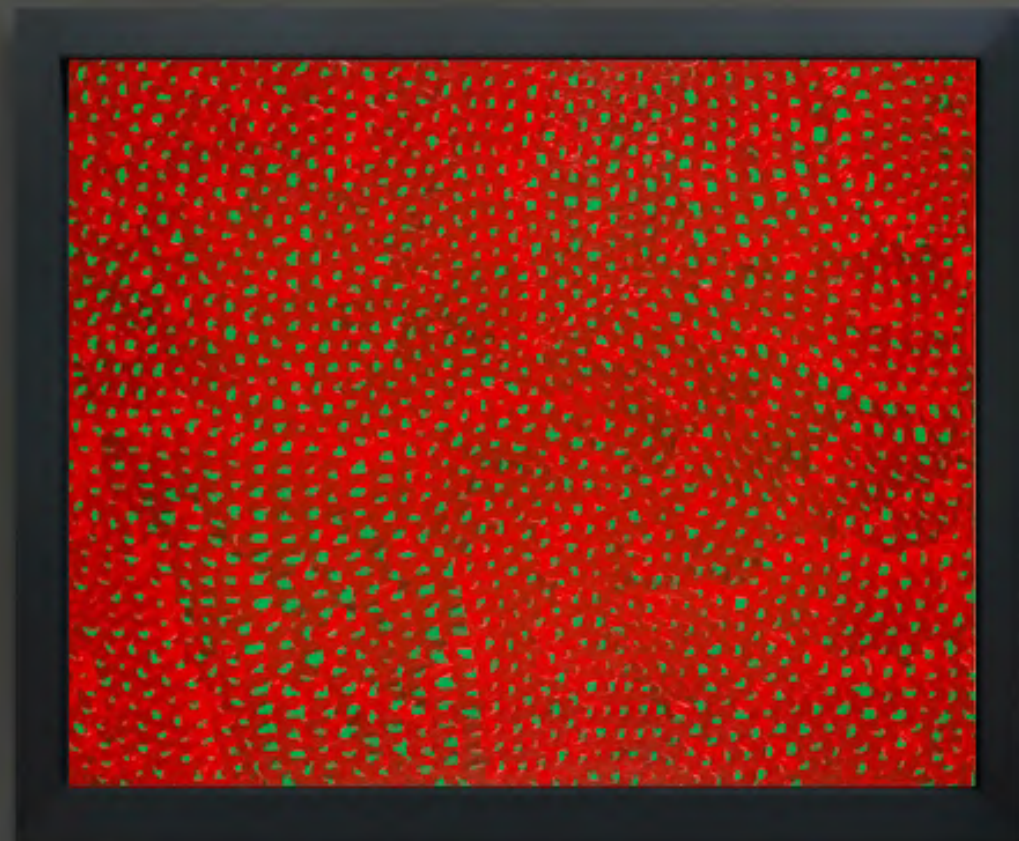
March 1924

Tempera on canvas

105 x 70 cm (41.3 x 27.5 in.)

PRESENTED BY DICKINSON, BOOTH 401

Dickinson presents 'Il Ritorno del figliol prodigo (The Return of the Prodigal Son)' by Giorgio De Chirico. De Chirico's 'Il Ritorno del figliol prodigo' is painted in tempera on canvas and layers of fine brushstrokes and hatching build up three-dimensional forms in this work.



Yayoi Kusama (b. 1929)

Infinity Nets (XAZ)

1999

Acrylic on canvas

72.7 × 91 cm (28.6 × 35.8 in.)

PRESENTED BY GALERIE VON VERTES, BOOTH 433

Copyright Walter Beyer, Munich

Galerie von Vertes presents 'Infinity Nets' by Yayoi Kusama. Kusama's 'Infinity Nets' is the artist's longest-running series, and this abstract work covered in repeated brushstrokes is part of the influential series.



Alberto Magnelli (1888 – 1971)

Pierres n° 2 bis

1932

Oil on canvas

168 x 100 cm (66.1 x 39.4 in.)

PRESENTED BY APPLICAT-PRAZAN, BOOTH 421

Copyright Applicat-Prazan / Copyright Adagp, Paris 2022

Pierres n° 2 bis by Alberto Magnelli is presented by Applicat-Prazan. The oil on canvas is a unique piece in an abstract art style.



Sophie Taeuber-Arp (1889 – 1943)

Quatre plans irréguliers à volutes

1939

Tempera and pencil on paper

35 x 26.5 cm (13.8 x 10.4 in.)

PRESENTED BY GALERIE LE MINOTAURE, BOOTH 434

Galerie La Minotaure presents a work by Sophie Taeuber-Arp, a leading pioneer of twentieth century abstraction. The tempera and pencil on paper is stamped with the estate on the backside, dated and numbered 1939/*8.



Maxime Old (1910-1991)

Salon Sofa, Model 369

1957

Waxed wild cherry wood, foam, fabric,
patinated brass and leather

86 x 200 x 78 cm (33.9 x 78.7 x 30.7 in.)

PRESENTED BY DEMISCH DANANT, BOOTH 608

Demisch Danant presents a Salon Sofa by the French interior Designer and Architect Maxime Old, forerunner for the transition of design from the 1930s into modern design. The Salon Sofa, Model 369 (1957) has a waxed wild cherry wooden structure and a remarkable, sculptural V-shaped back support. It is a masterful design commission directly from the artist in 1957 and was kept by the family until now. This is the first time this piece has been shown.



Pottery Figure of a Court Lady

Early Chinese Art

Pottery

52 x 20 cm (20.5 x 8 in.)

PRESENTED BY BEN JANSSENS ORIENTAL ART, BOOTH 205

Ben Janssens Oriental Art presents a pottery figure of a court lady from the Tang Dynasty. This exceptional figure is a pristine example of Tang Dynasty tomb sculpture, with only small repairs to hands and feet. The elegant pottery portrays a Court Lady in an elegant pose, with precisely rendered delicate facial features. The figure is covered in a thin layer of white slip retaining traces of the original-coloured pigments.



Hortus Conclusus (fragment)

1500-1525

Wool and silk

248 x 250 cm (97.6 x 98.4 in.)

PRESENTED BY DE WIT FINE TAPESTRIES, BOOTH 272

Copyright De Wit Fine Tapestries

De Wit Fine Tapestries presents a wool and silk Hortus Conclusus fragment. The tapestry is from southern Netherlands and woven in the early sixteenth century.



Head of a Youth, the so-called 'von Heyl Head'

Late 5th century BC

Marble

25.5 x 23 cm (10 x 9.1 in.)

PRESENTED BY GALERIE CAHN A.G. BOOTH 507

The "von Heyl Head" is presented by Galerie Cahn A.G. The Marble is sculpture from the late 5th century BC, represent a softly modelled oval face of a young male, possibly Apollo.



Attributed to Master of the Horber Madonna/
'Kreuzwinkelmeister'

Virgin and Child

Circa 1430-40

Lime wood, reverse hollowed out, traces of the old polychrome
100 cm (39.4 in.)

PRESENTED BY SENGER BAMBERG KUNSTHANDEL, BOOTH 246

Senger Bamberg Kunsthandel exhibits an outstanding example of the Virgin and Child. This gothic sculpture of the Virgin Mary is distinctive from the period around 1400 and shortly thereafter.



Heritage Necklace

1969

Platinum, white gold, 59 sapphires, diamonds

43.5 x 6 cm (17.1 x 2.4 in.)

PRESENTED BY VAN CLEEF & ARPELS, BOOTH 114

Copyright Van Cleef & Arpels

Van Cleef & Arpels presents Heritage Necklace. The 59 sapphires of various origins and shapes are displayed as an exceptional ensemble of precious stones set in white gold and platinum.



Jan Diamant

Sterling silver cup

1688

Sterling Silver

PRESENTED BY A.AARDEWERK, BOOTH 261

Gallery A. Aardewerk, specialist in Dutch silver from the 17th and 18th centuries, present a unique sterling silver drinking cup created in 1688 by Jan Diamant in Haarlem. The cup is decorated with a Dutch windmill on its top and was made for drinking wine. This piece was a part of a drinking game from the Dutch Golden Age, the game was an entertainment of the time and involved blowing into an attached pipe and get the windmill ornament's blade to move.



Attributed to Diego de Siloe (1495 – 1563)

Saint Sebastian

Circa 1514-1515

Carrara marble

145 cm (57.1 in.)

PRESENTED BY LULLO PAMPOULIDES, BOOTH 308

Copyright Lullo Pampoulides

Lullo Pampoulides exhibits a near-life-size statue of Saint Sebastian, carved by an ambitious 20-year-old Spaniard called Diego de Siloe between 1514 and 1515. This sculpture is offered on the open market for the first time, and the work marks the critical moment when Diego infused his block of marble with the stylistic elements, he had absorbed on his travels through Italy leading him to abandon tradition take up the newer and utterly revolutionary Renaissance style.



Aljoscha (b. 1974)

Archē and Ápeiron of biological engineering

2022

Aluminum with iridescent surface

2-piece 235 x 95 x 130 and 160 x 90 x 110 cm (92.5 x 37.4 x 51.2 and 63 x 35.4 x 43.3 in.)

PRESENTED BY BECK & EGGELING INTERNATIONAL FINE ART, BOOTH 436

‘Archē and Ápeiron of biological engineering’, 2022 by Aljoscha is presented by Beck & Eggeling International Fine Art. This sculptural work by the Ukrainian artist, Aljoscha, deals with both social and bioethical questions, as well as natural and artificial systems.



Vincent van Gogh (1853 – 1890)

Populierenlaan bij Nuenen (Poplars near Nuenen)

1885

Oil on canvas

78 x 98 cm (30.7 x 38.6 in.)

PRESENTED BY MUSEUM BOIJMANS VAN BEUNINGEN, TEFAF ENTRANCE HALL

Presented by the Museum Boijmans van Beuningen, the *Populierenlaan bij Nuenen (Poplars near Nuenen)* by Vincent van Gogh will be on display to visitors in its pre-restoration state.

This Van Gogh work was the first of the artist's paintings to enter a public collection in 1903 and will undergo a restoration funded by TEFAF's Museum Restoration Fund.

Vincent van Gogh *Populierenlaan bij Nuenen (Poplars near Nuenen)* is not for sale.

ENDS

Notes to editors: for press accreditation to TEFAF Maastricht 2022 please complete the registration form [here](#).

About AXA XL

TEFAF and AXA XL, its Lead Partner for TEFAF Maastricht, share the view that there's more to art than meets the eye.

AXA XL, the property & casualty and specialty risk division of AXA, provides insurance and risk management products and services for mid-sized companies through to large multinationals, and reinsurance solutions to insurance companies globally. We partner with those who move the world forward. To learn more, visit www.axaxl.com.



About TEFAF

TEFAF is a not-for-profit foundation that champions expertise and diversity in the global art community, evidenced in the exhibitors selected for its two fairs, which take place annually in Maastricht and New York. TEFAF acts as an expert guide for both private and institutional collectors, which inspires lovers and buyers of art everywhere.

About TEFAF Maastricht

TEFAF Maastricht is widely regarded as the world's premier fair for fine art, antiques, and design, showcasing the finest art works currently on the market. Alongside the traditional areas of Old Master paintings, antiques, and classical antiquities that cover approximately half of the fair, you can also find modern and contemporary art, photography, jewelry, 20th-century design, and works on paper.

TEFAF Maastricht will be held in the MECC Maastricht from June 25-30, 2022. June 24 and until 2PM on June 25 by invitation only.

About TEFAF New York

TEFAF New York was founded in early 2016, originally as two annual art fairs in New York at the Park Avenue Armory — TEFAF New York Fall and TEFAF New York Spring. Today, TEFAF New York is one singular, annual fair that encapsulates modern and contemporary art, jewelry, antiques, and design, featuring around 90 leading exhibitors from around the globe. Tom Postma Design, celebrated for its innovative work with leading museums, galleries, and art fairs, has developed designs for the fairs that interplay with the spectacular spaces while giving them a lighter, contemporary look and feel. Exhibitor stands will flow throughout the Armory's landmark building encompassing the Wade Thompson Drill Hall and extending to both the first and second floors of the Armory's period rooms, creating a fair of unprecedented depth and impact in New York City.

Press Contacts

GLOBAL

Magda Grigorian
magda.grigorian@tefaf.com

Bernadette Kiekenbeck
bernadette.kiekenbeck@tefaf.com

GERMANY, AUSTRIA, SWITZERLAND

Britta Fischer
bfpr@brittafischer-pr.com
T +49 61 13 00 877

UNITED KINGDOM

Lucy Barry
lucy@culturalcomms.co.uk
T +44 07912 627 876

Louise Carlsen
louise@culturalcomms.co.uk
T +44 (0)7463 046 482

Zoe Fields
zoe@culturalcomms.co.uk
T +44 07464 954 771

THE NETHERLANDS

Noepy Testa
noepy@entesta.nl
T +31 (0) 629141054

Heidi Vandamme
info@bureauheidivandamme.nl
T +31 (0) 629532686

ITALY

Roberta Barbaro
gestione3@studioesseci.net
T +39 04 96 63 499

UNITED STATES

Josh Schoenfelder
josh.schoenfelder@sharpthink.com
T +1 212 829 0002 x 136

Sadie Dame
sadie.dame@sharpthink.com
T +1 212 829 0002 x 116

FRANCE, MONACO, SWITZERLAND

Gaëlle de Bernède
gaelledebernede@gmail.com
T +33 17 54 34 680

SPAIN

Héctor san José
hectorsanjose@live.com
T +34 625 58 29 41

Julián Hernández
julian.hdez58@gmail.com
T +34 630 96 37 35

BELGIUM & LUXEMBOURG

Charlotte de Bruijn UPR Belgium
charlotte@upragency.com
T : +32 3 230 30 92