



PORTFOLIO
JIANQIANG JIAO



SPACE OF ABSENCE

Advisors: Mario Gooden
2023 Spring Semester
Design: partner with Chayanidh Chantraprapawat

This project focuses on the transmutation of different cultural forces. We are proposing the Architecture interventions as a living archive to tell the stories of the resistance of colonial culture and reveal the hidden historic context.

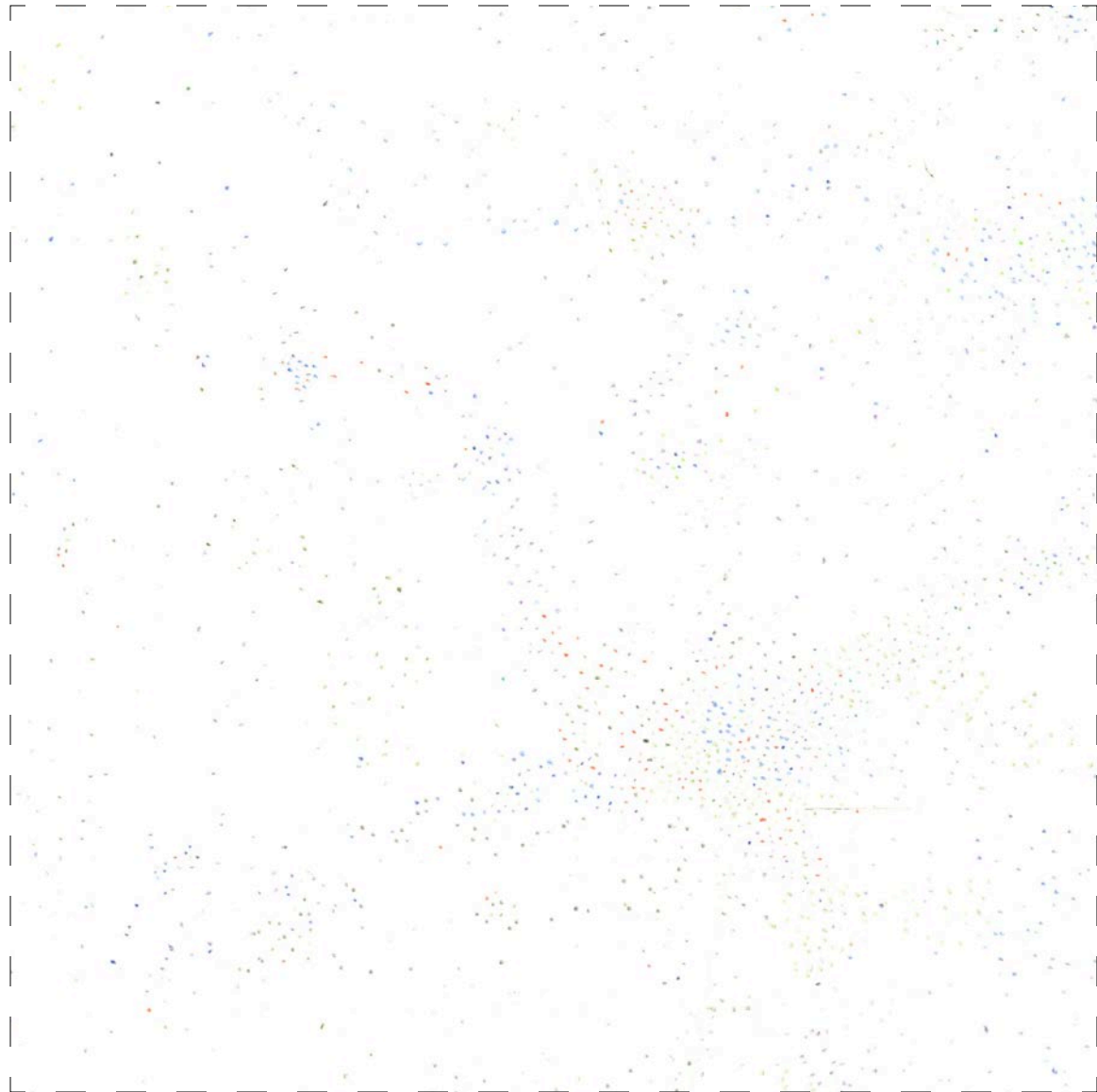
“Land”

“Water”

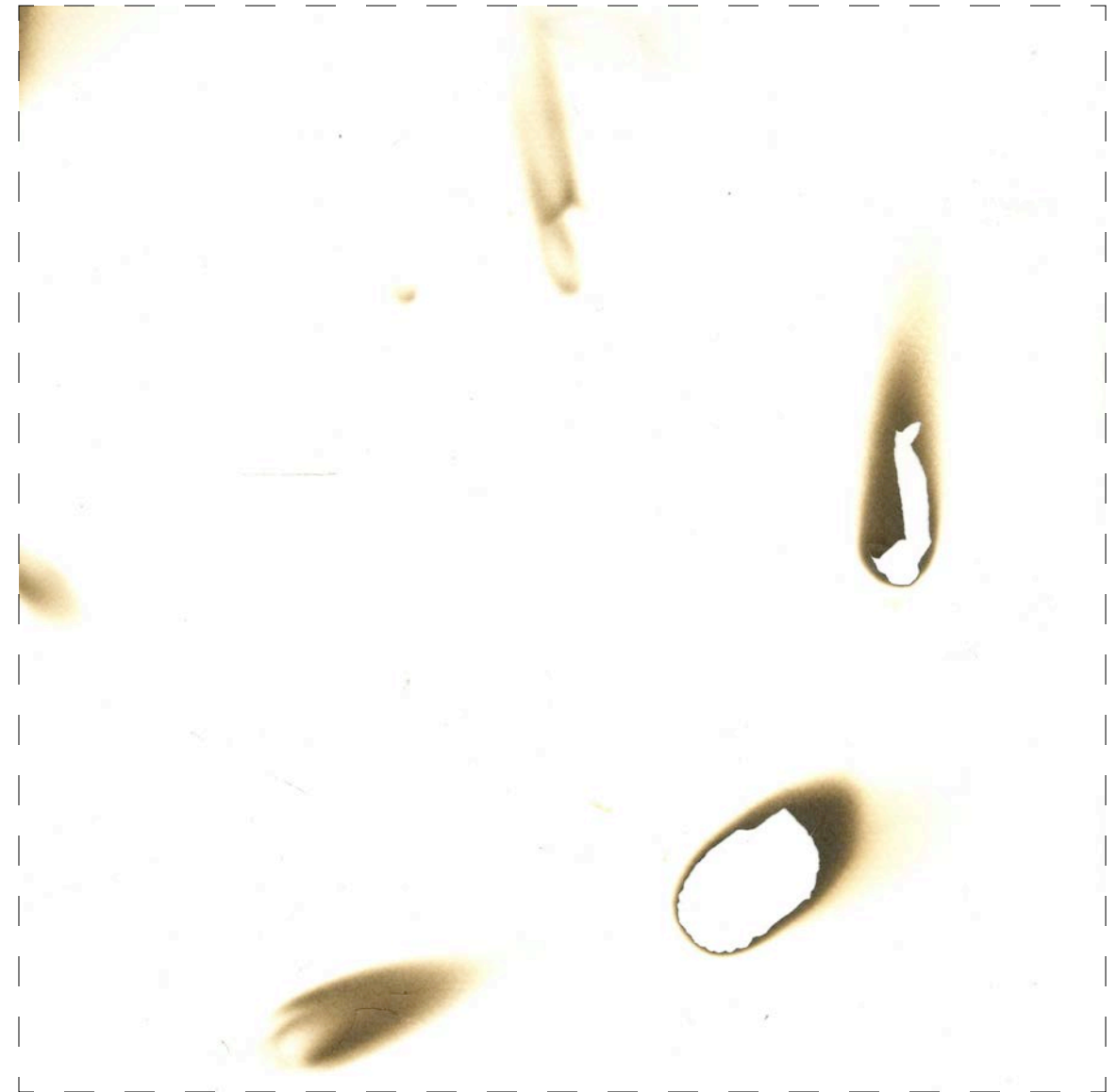
“Air”



“Land”



“Water”



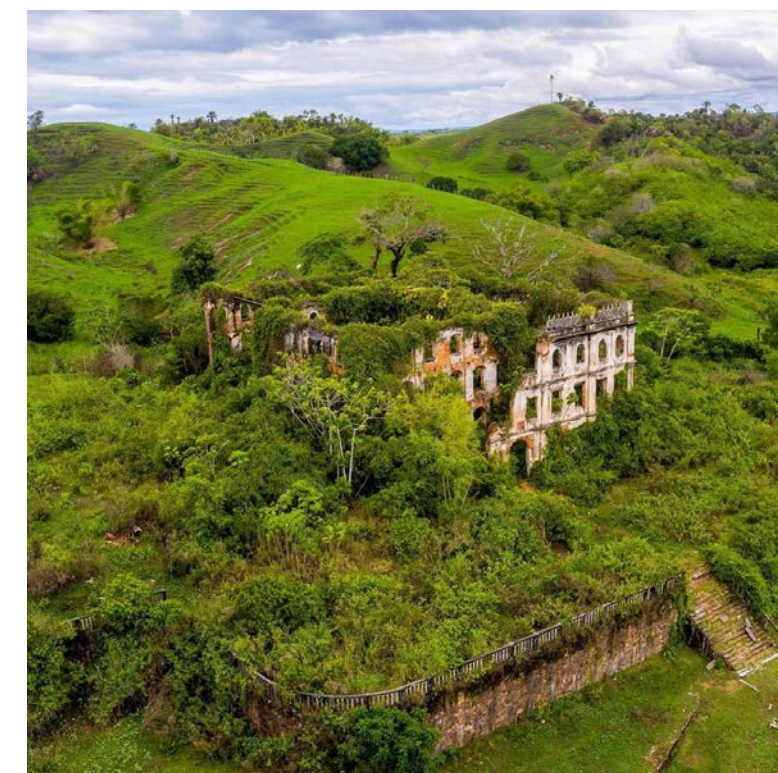
“Air”



The Imperial School of Agriculture of Bahia was established in 1875 under the direction of Dom Pedro II . The site was primarily for sugarcane plantation. The primary goal and agenda of establishing this school is to “modernize” and promote “the poor agricultural productivity” and “technological backwardness” as well as to test systems for cultivating the land. The school was fully abandoned in 1958 and is currently a historical preservation site in the North-West of Salvador situated upon a small hill in a rural context with a great amount of vegetation.

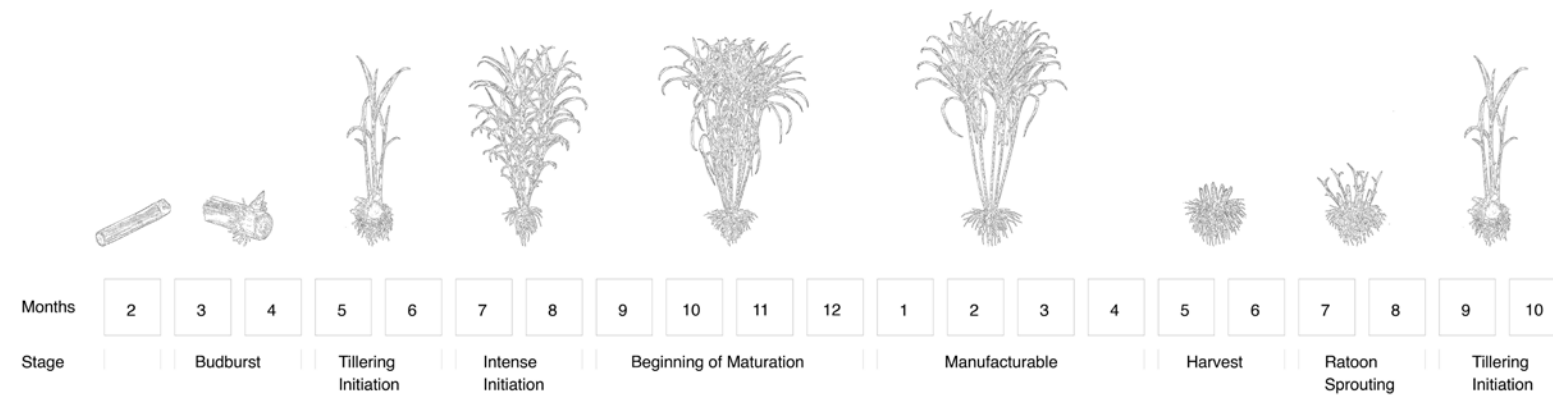


Imperial Agriculture School of Bahia



Ruin of Imperial Agriculture School of Bahia

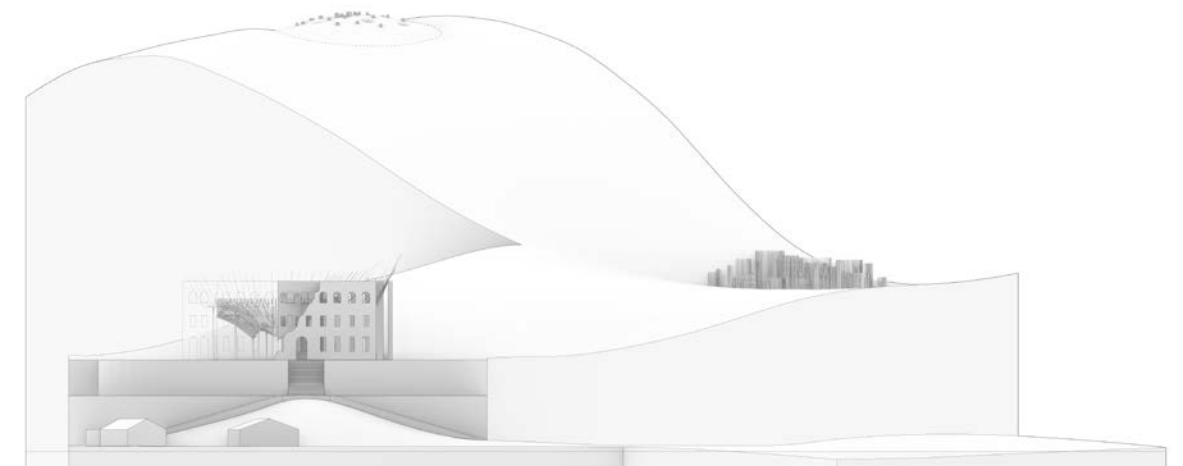
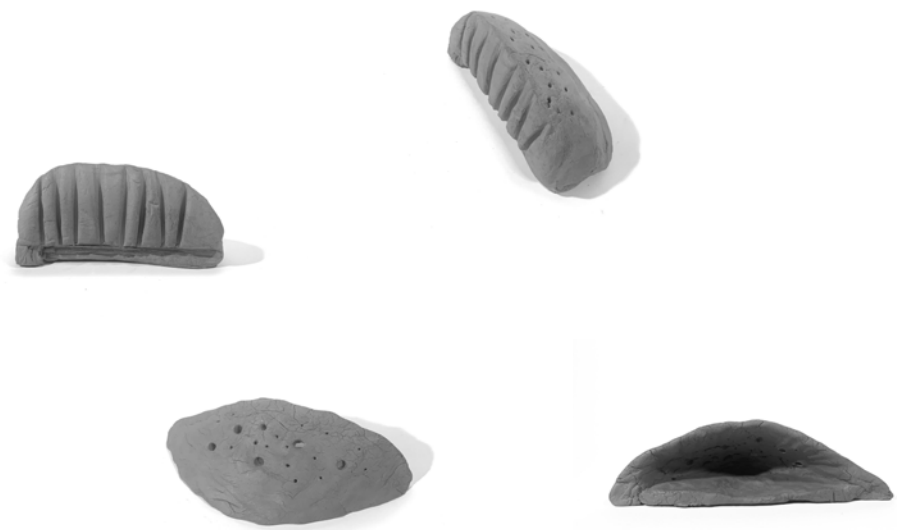
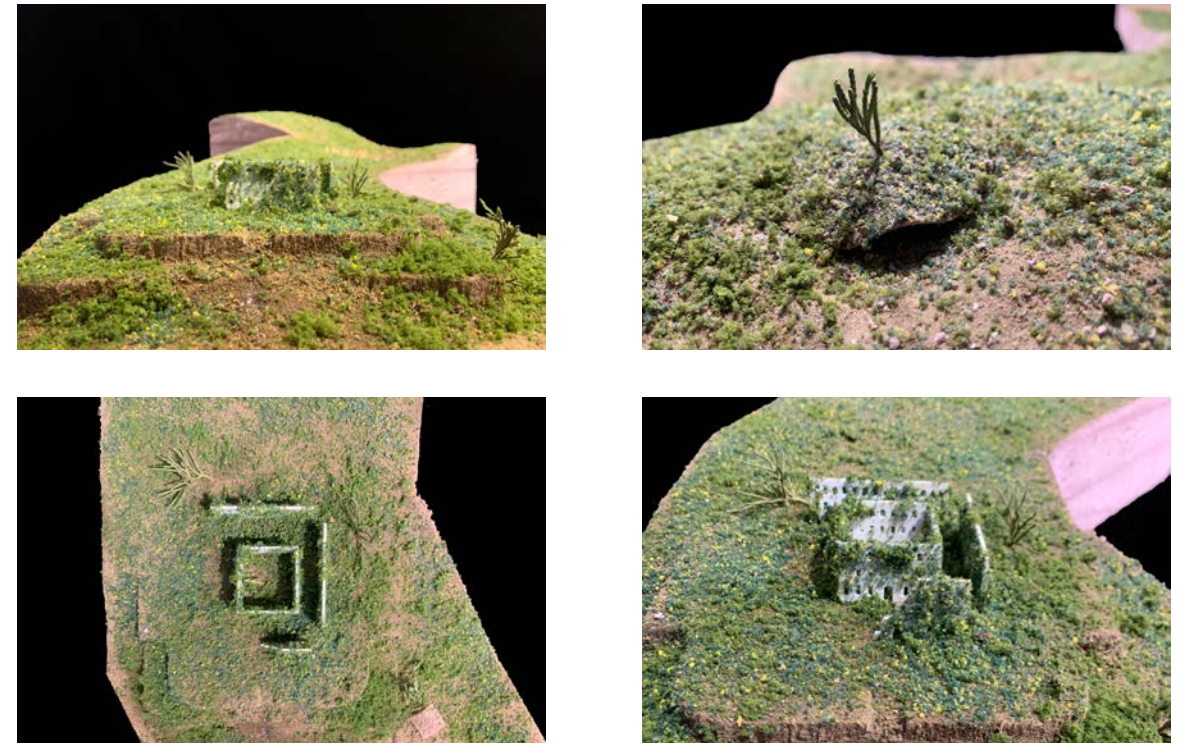
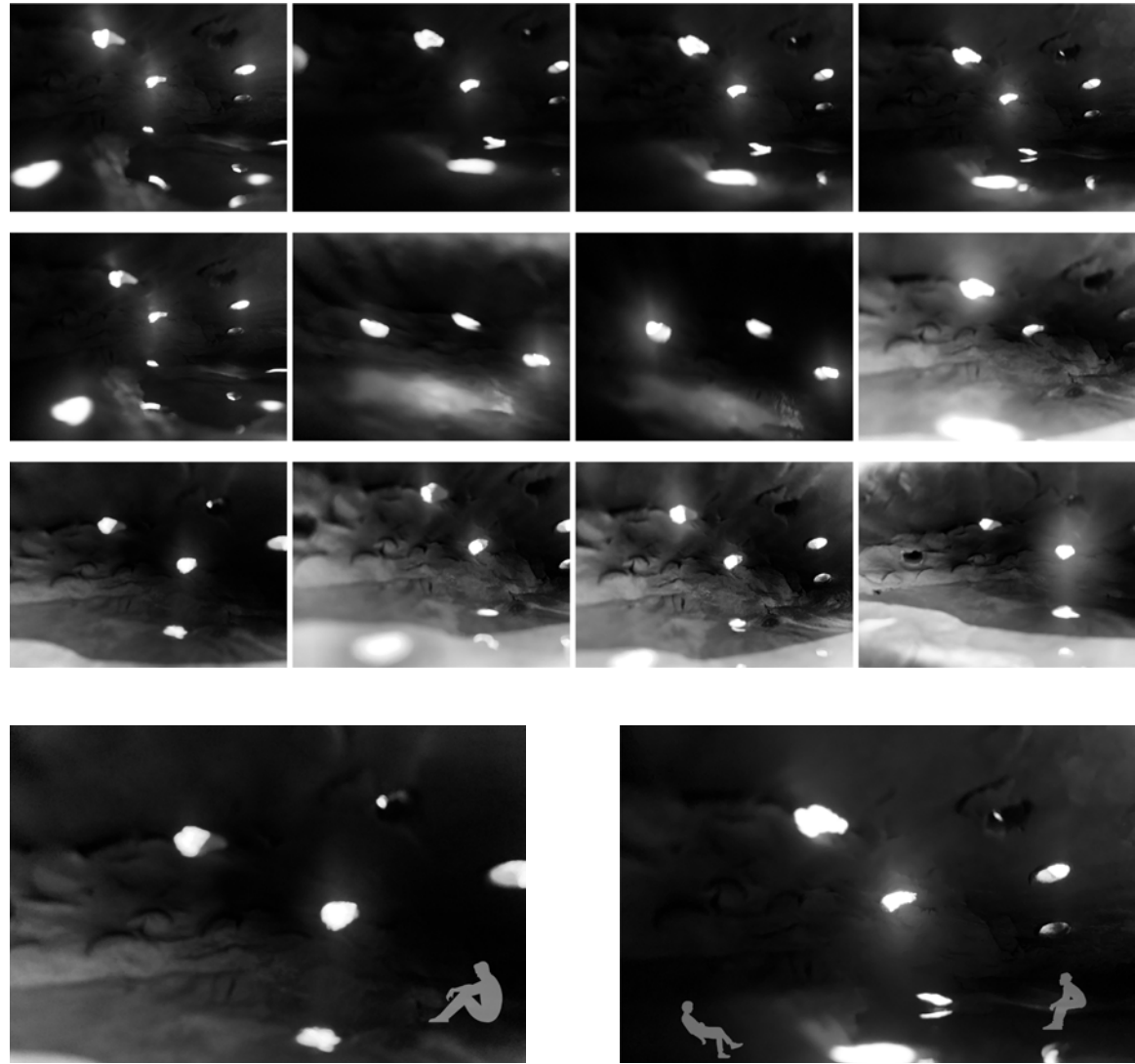




THE CANE CUTTERS OF BRAZIL



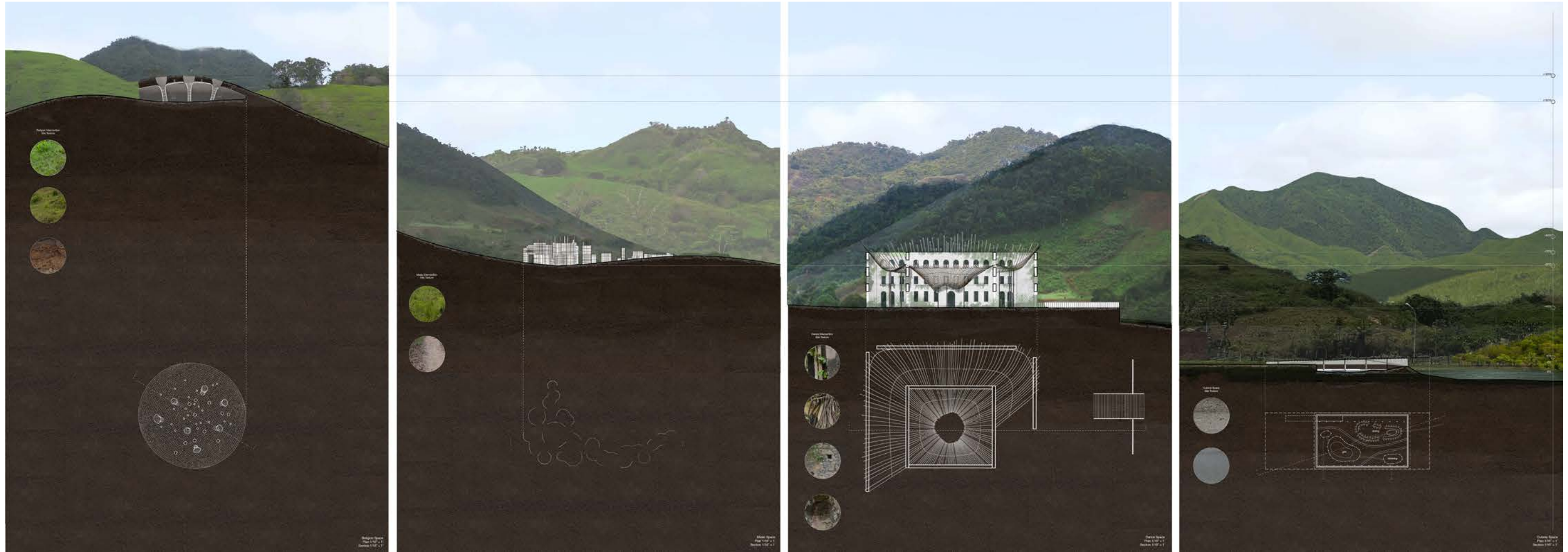
ECOLOGY IN CONTEXT

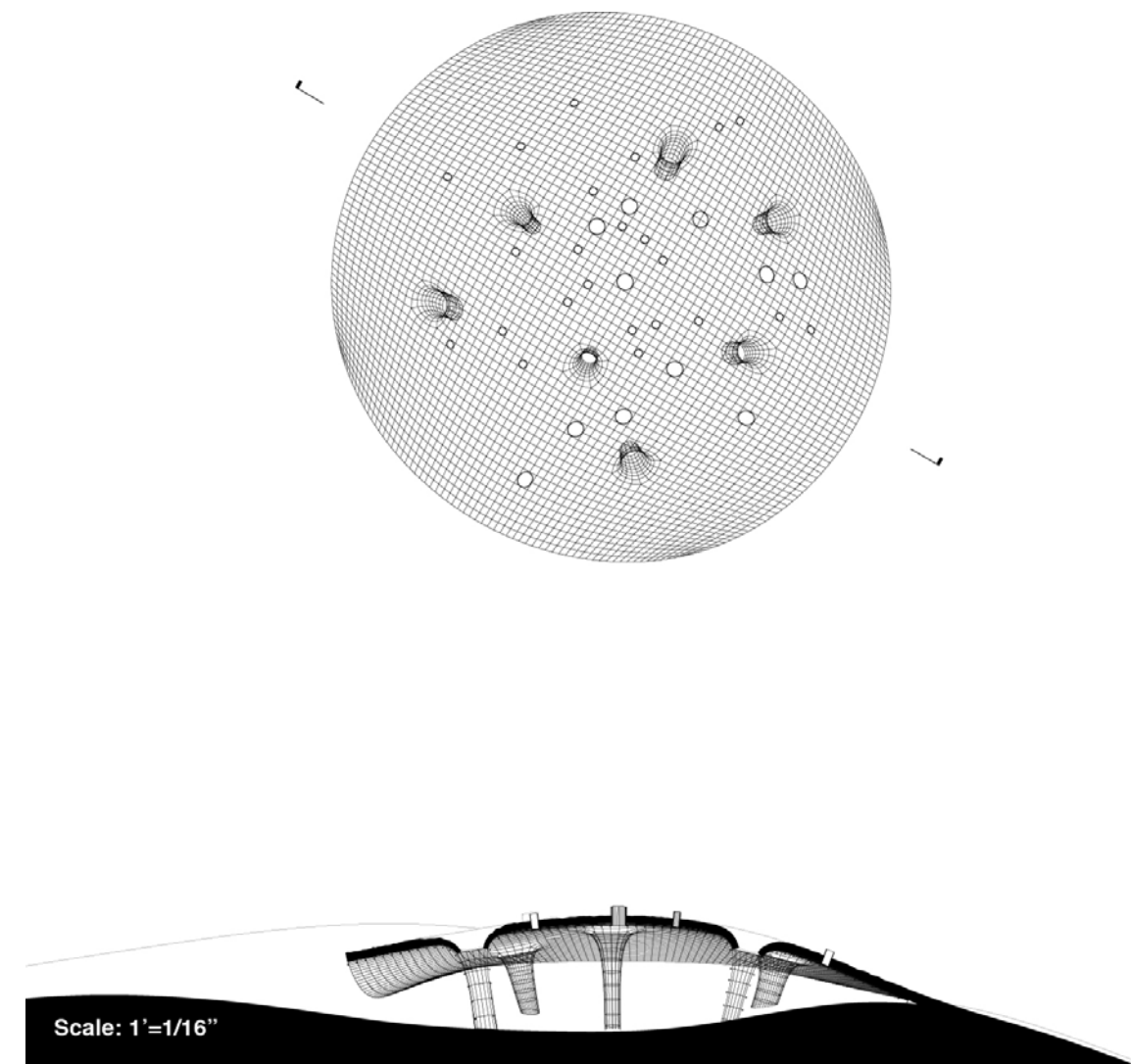


STUDY MODELS



SITE PLAN

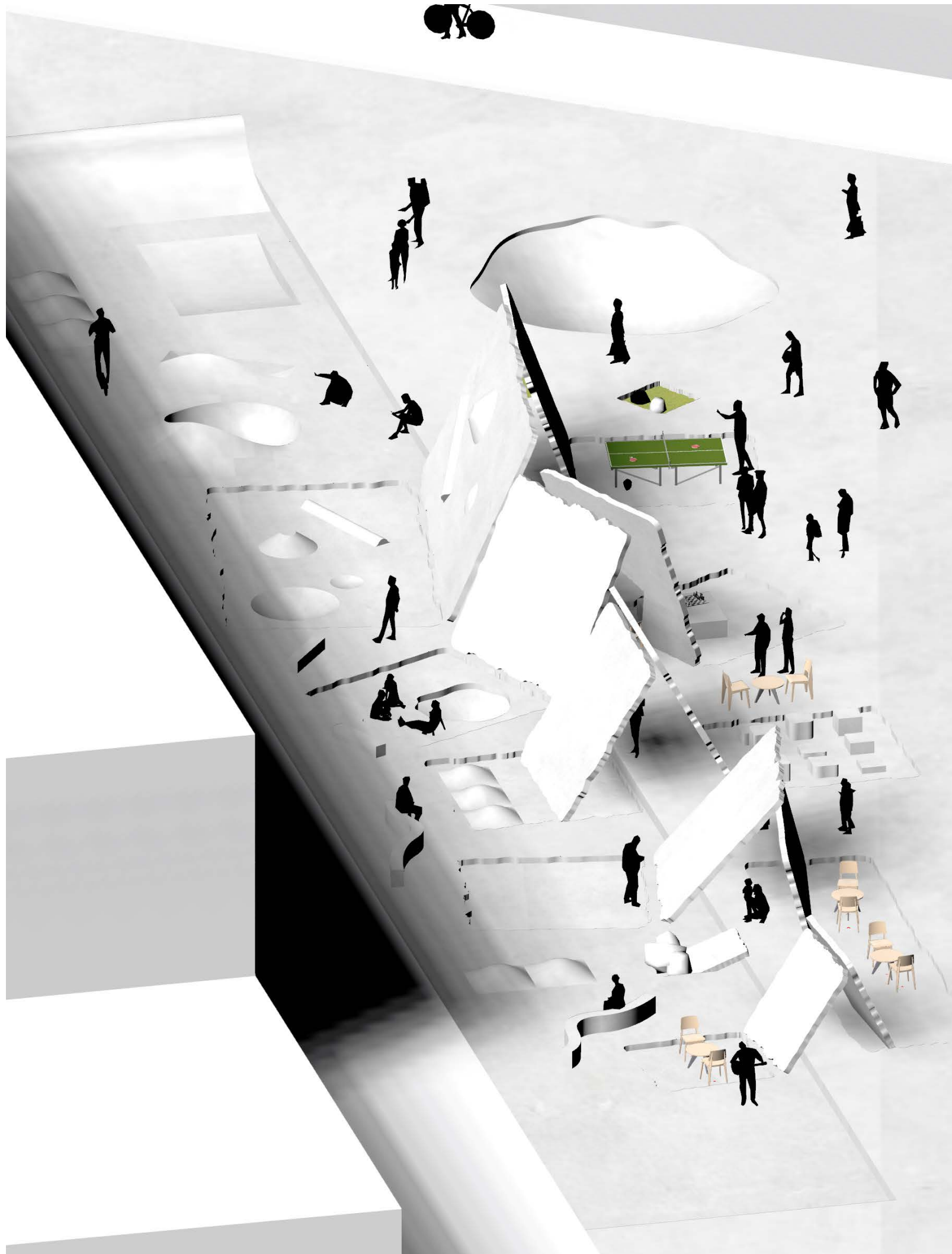




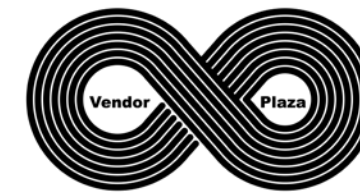








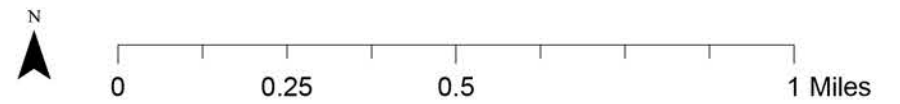
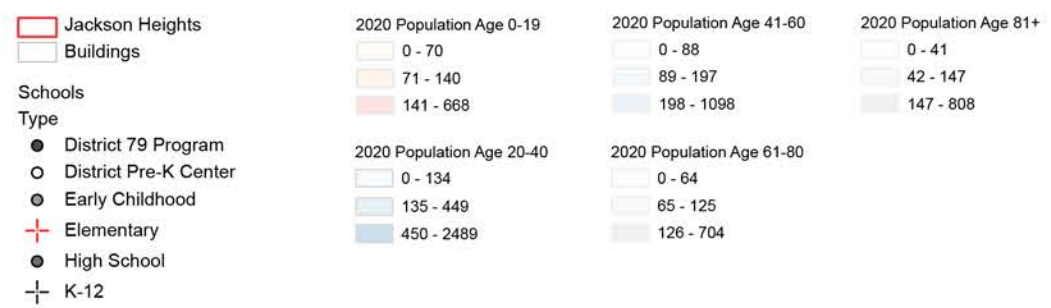
FACADE PLAZA



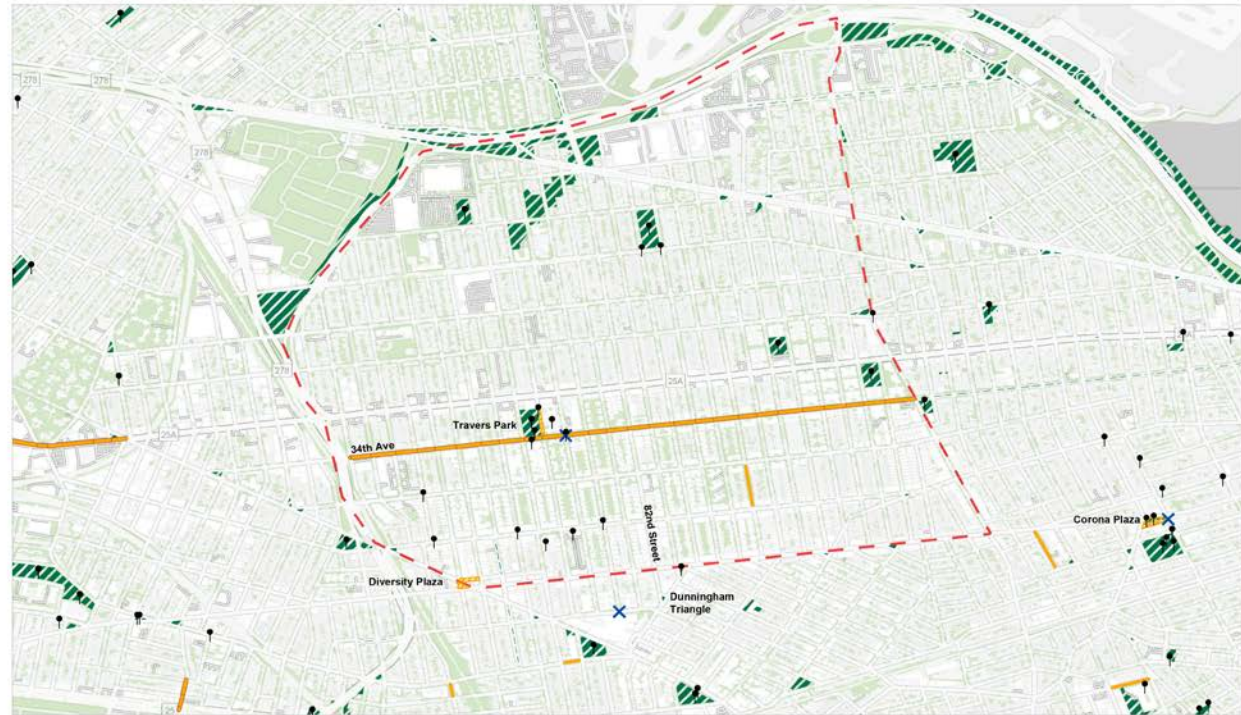
Advisors: Jing Liu
Design: Individual
2022 Fall Semester

The studio works in the colorful neighborhood of Jackson Heights in New York. The work revolves around three main topics: People, Places, and Things.

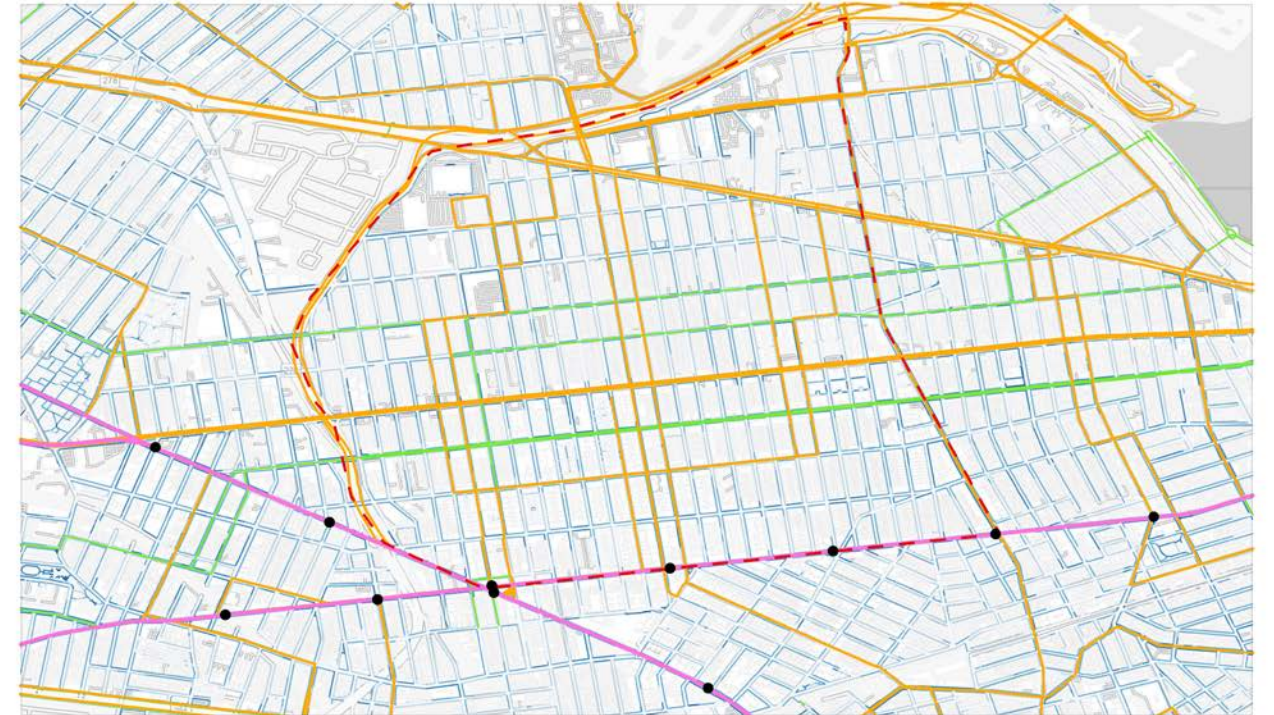
We embed ourselves in the community and on the streets, talking to people we don't know. We listen, learn and think carefully and intently before we draw. We think about the modernist canon and why the streets are the way they are. We discuss what should stay and what should go. We are respectful, curious, joyous, and free in our work. We are humbled every day by the resiliency and aliveness of this community. We remain flexible towards what comes our way. It's a collective exploration without a pre-meditated outcome. Prolific and brave, we learn our own mistakes, misconceptions, and shortcomings through being in the realm of the real to create a new fiction imbued with ample agencies to become.



Age Population Distribution / School Distribution in Jackson Heights, New York



Open Plaza / Open Streets & Events Locations



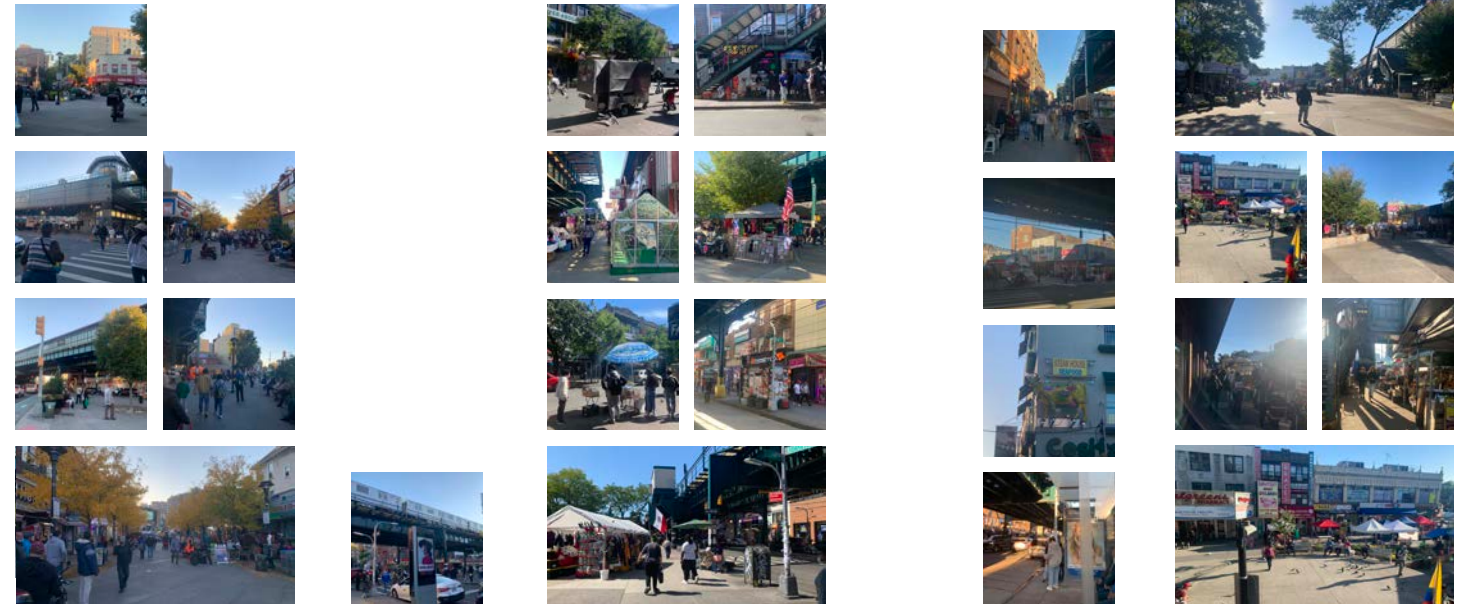
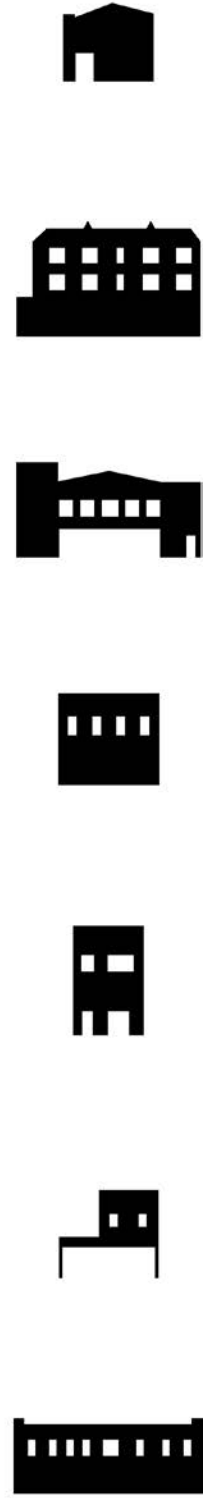
Transportation System



Vendors Distribution



Race Distribution

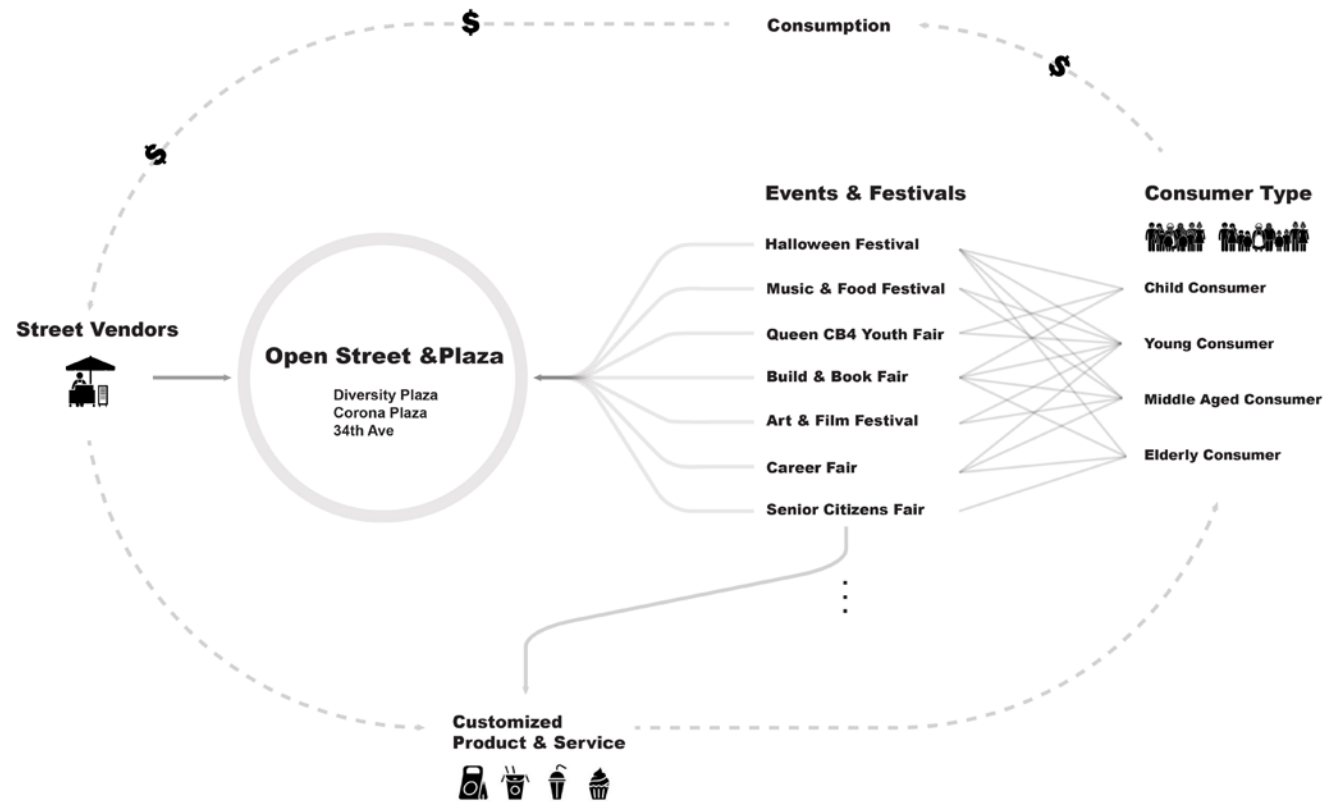


Street Facade Study

Street Conditions



Street Culture / Vendors & Food



Street Culture / Vendors & Food



Analysis on Small Business Around the Plaza

Public Space Needs Questionnaire

Age _____ Gender _____

Please check the followings which you wish to see in public plazas

- Shelter from the weather (both heat and rain)
- Plenty of seating
- Wi-Fi facilities
- Lighting and access to power
- Urban art exhibition space
- Legal graffiti walls
- Basketball courts
- A stage for presentations, music, and performances
- Ping Pong Tables
- Mini Rock Climbing Wall
- Skate Park with facilities to cater for all ages
- A parkour park, fit for all skill levels
- Roller Derby
- Public BBQ
- Street Vendors
- Public Market
- Pop-up Bookstore
- Water Fountains
- Tables for Playing Chess
- Space for Dancing

Others _____



BUILD Together NYC



Uni Reading Room



Dancing



Yoga Class

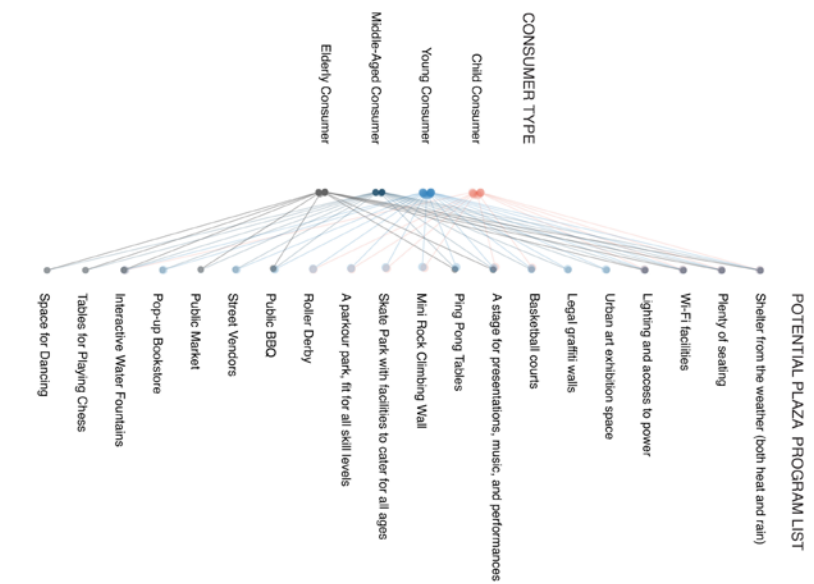


Hula Hooping



Green Market

Street Activities





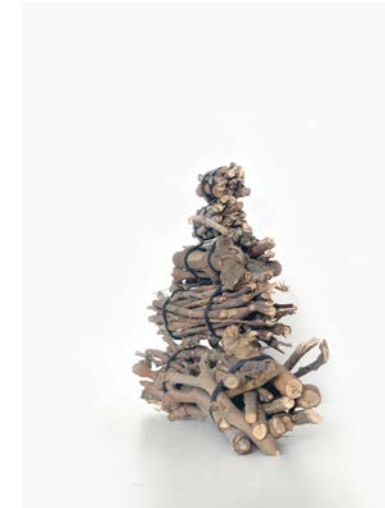
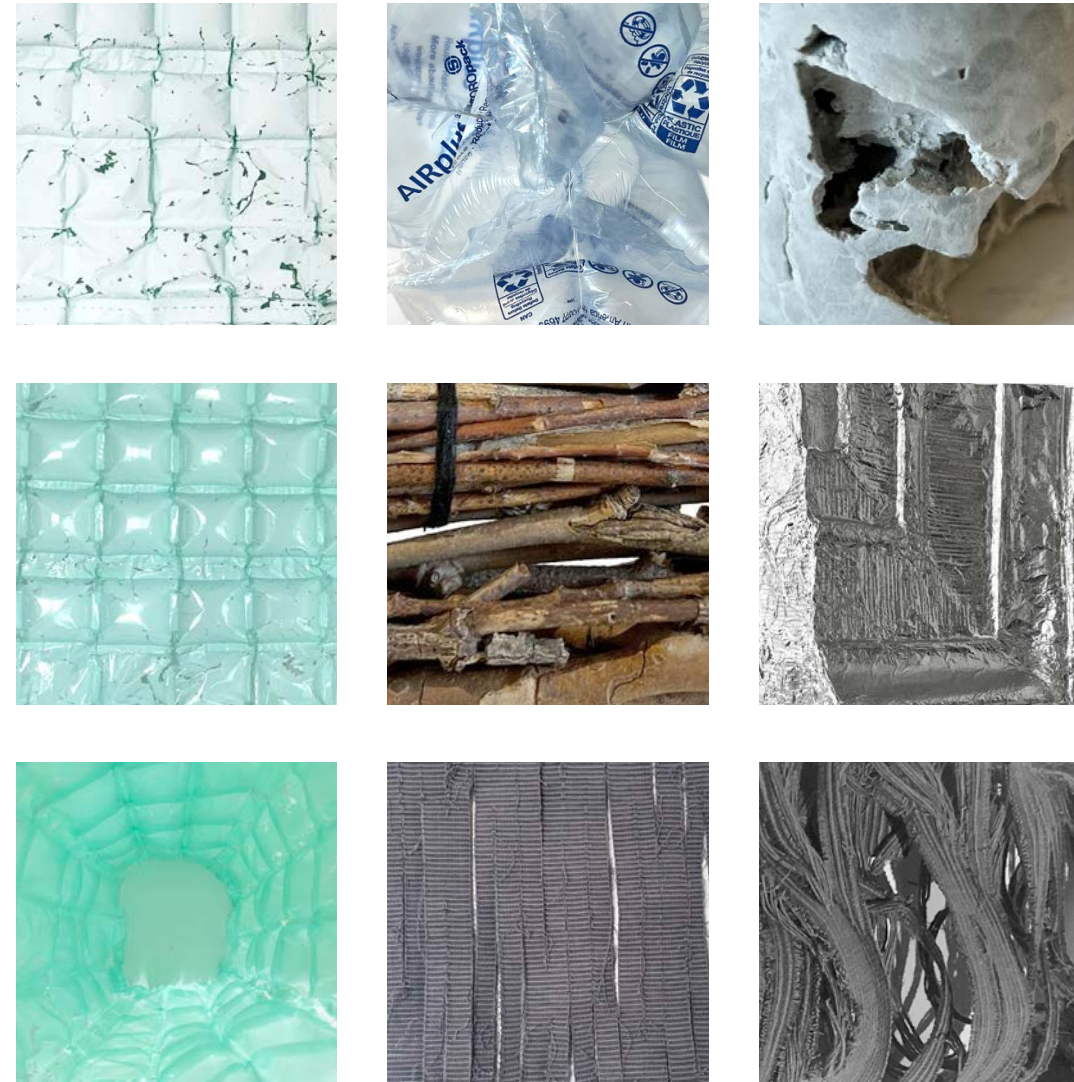
- 1 SKATE PARK
- 2 WATER FOUNTAIN
- 3 PING PONG TABLE
- 4 CLIMBING WALL
- 5 CHESS TABLE
- 6 LOUNGE AREA
- 7 SEATING AREA
- 8 EXHIBITION WALL
- 9 GRAFFITI WALL
- 10 RESTING AREA
- 11 PERFORMANCE AREA



Formal Approach - Sand Casting

A series of sand casting concrete facade stemming from local street buildings. The idea is to create a formal connection between the Facade Plaza and its contexts, which essentially intends to create a public space that is familiar to the local residents and street vendors.





Wood Tower

De-fabric



Ice-crete

Melting and solidifying commonly are considered as opposite process and it is rare to see both happen at the same time. So this piece Ice-crete initiated with the curiosity whether these two conflicting physical forces can work together. It is an imagination about the Intersection.

The process is simple. Pour the concrete into a cup of ice. Caved-like interior space is shaped by melting of ice and exterior shaped by solidifying of the concrete.



MAKE

Seminar Visual Study Fall 2022
 Advisor: Ada Tolla , Giuseppe Lignano
 Design: Individual Work

Make begins with the act of seeing. Look at THINGS that are leftovers, refuse, disposed items, personal items. The idea is to look at them with bravery, the bravery of considering them beyond their discarded status and reflect on the potential of waste, and reframe its visual and cultural significance through direct exploration.

Make is experimental and personal in materials including **plastic, metal, concrete, wood, fabric**. Also, difficult, ugly, dirty, weird and investigative—rather than definitive in presenting evidence and conclusions.

The material is vague.
 The material is a THING.

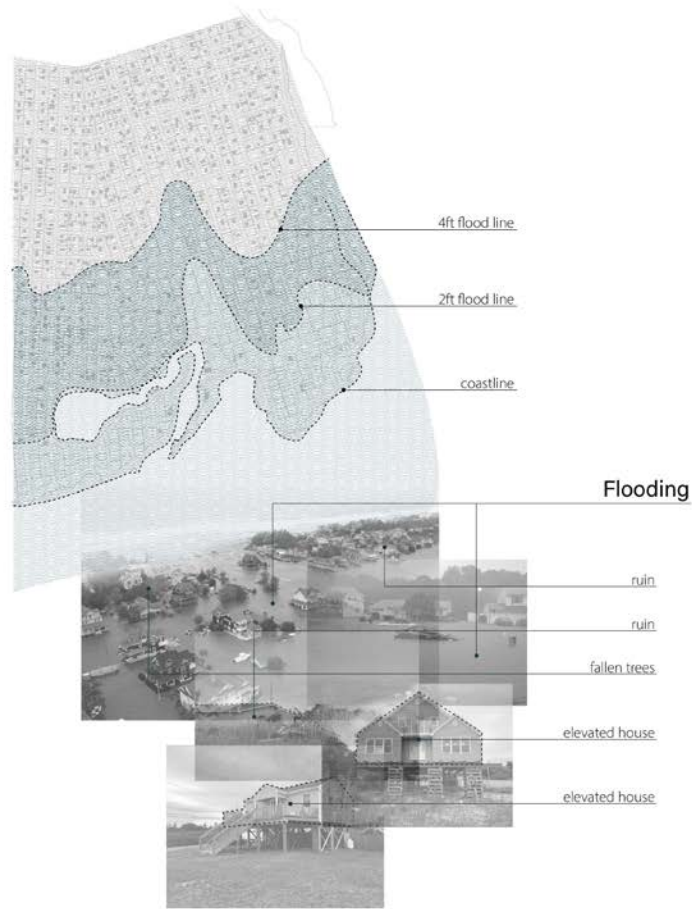
The material is an opportunity and a constraint.

MAKE will explore and question the preoccupations, concerns and personal inquiries.

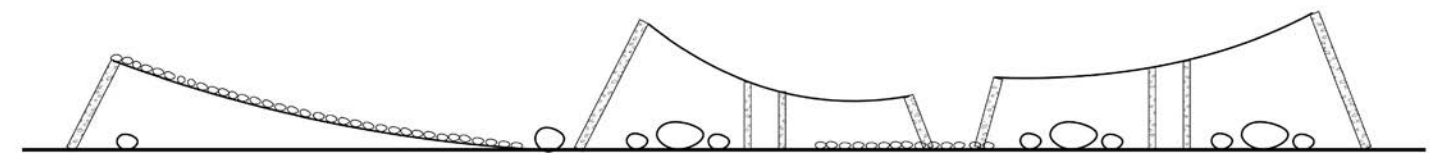
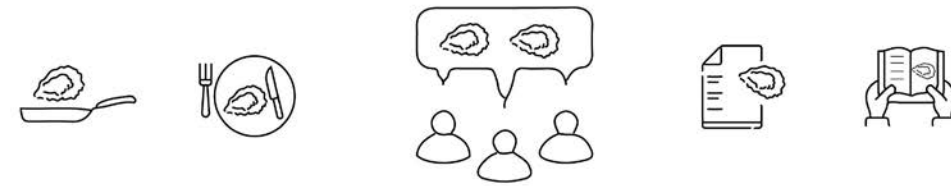
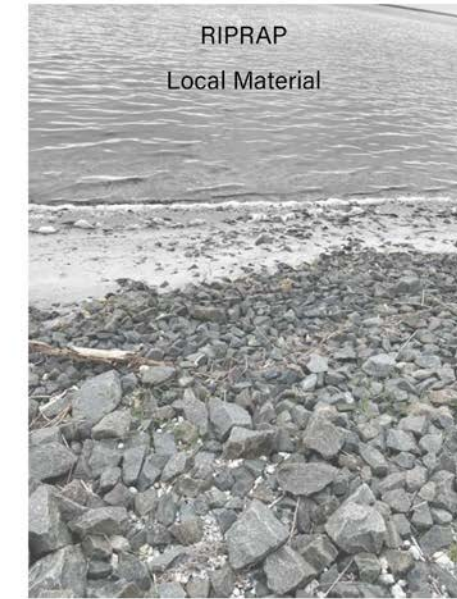
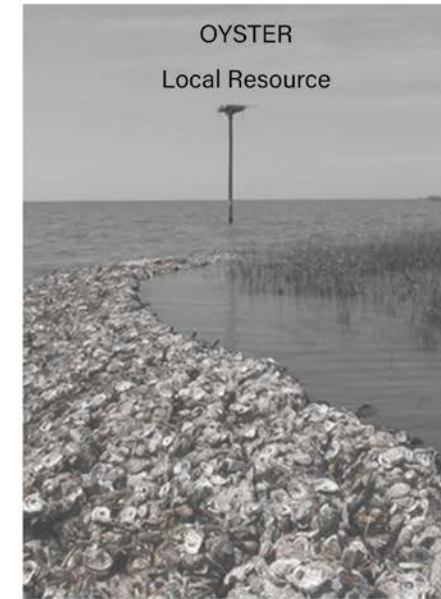




BEACH LAB
jelvis&wenxuan



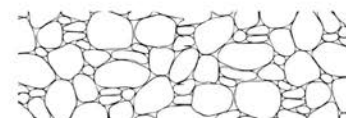
Mastic Beach
Climate Deterioration



The riprap will blend with the environment and integrate in to the landscape



Wave



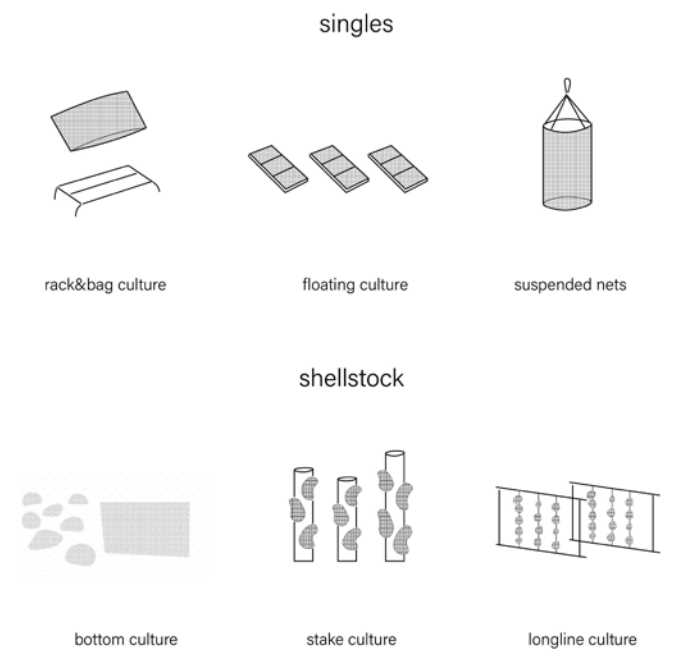
Riprap

Riprap is a good way to connect back to the local environment

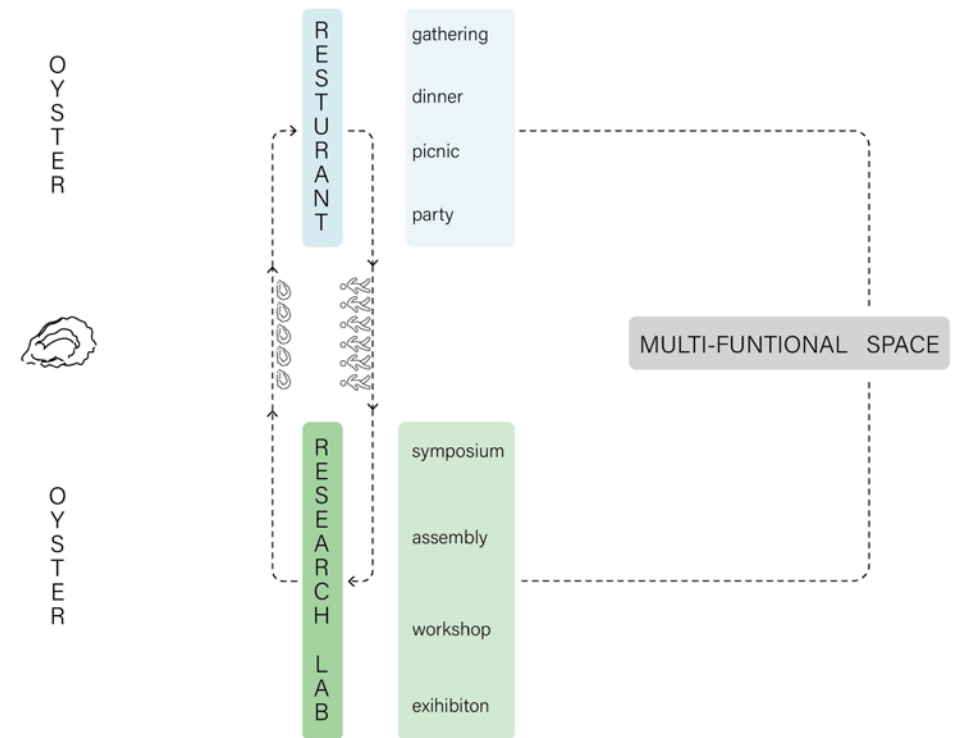
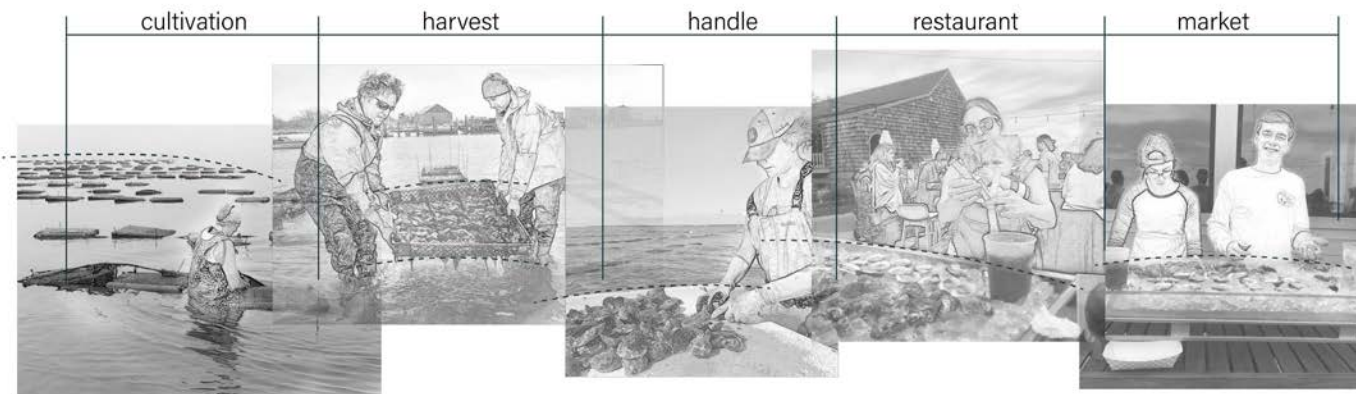
Oyster research lab

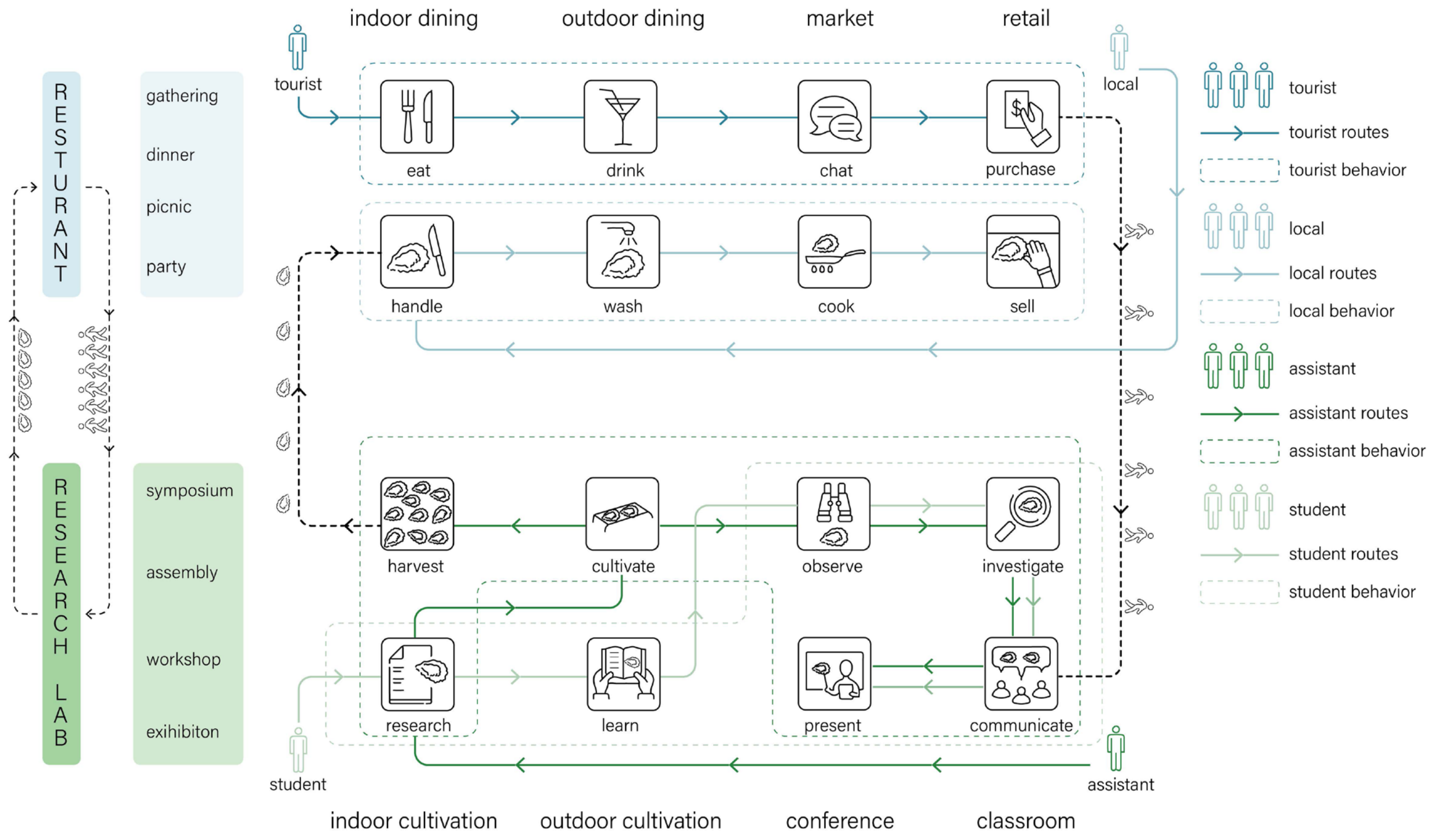


Oyster growing methods



Activities about oyster in Mastic Beach



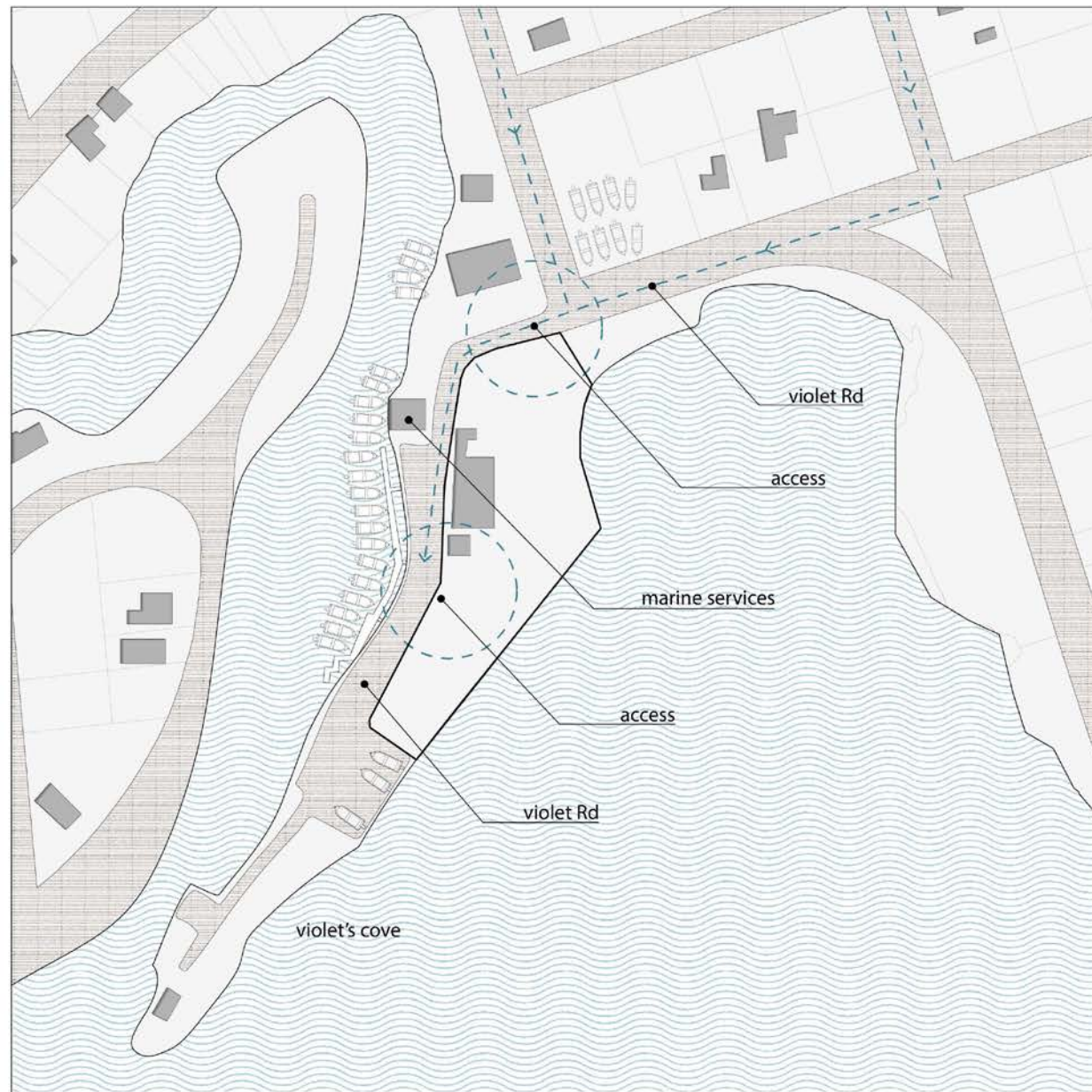




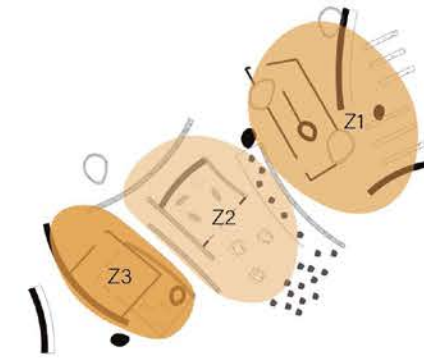
existing building major road



high marsh intertidal marsh

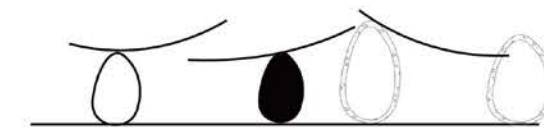


site accessibility



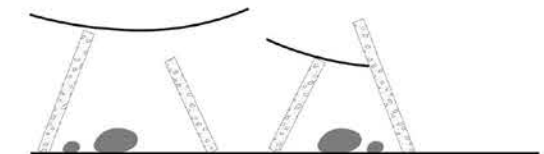
Z1 resturant Z2 research lab
Z3 multi-funtional space

Z1 resturant



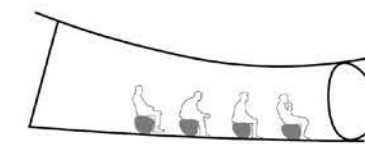
stone as tectonic
enclose
false stone

Z2 research lab

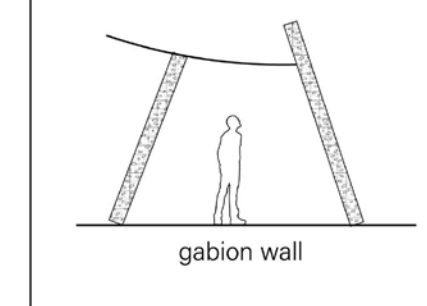
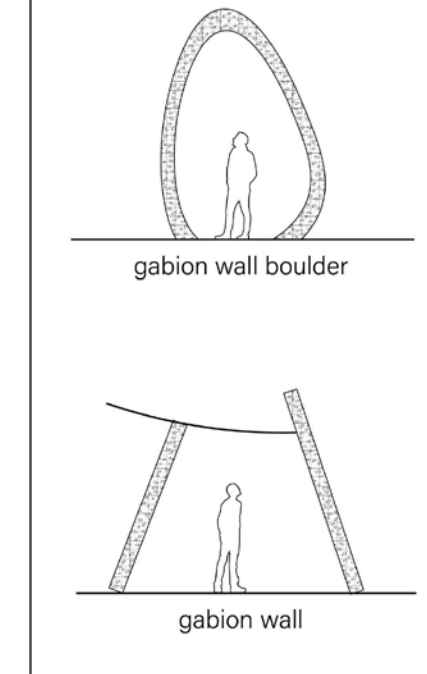
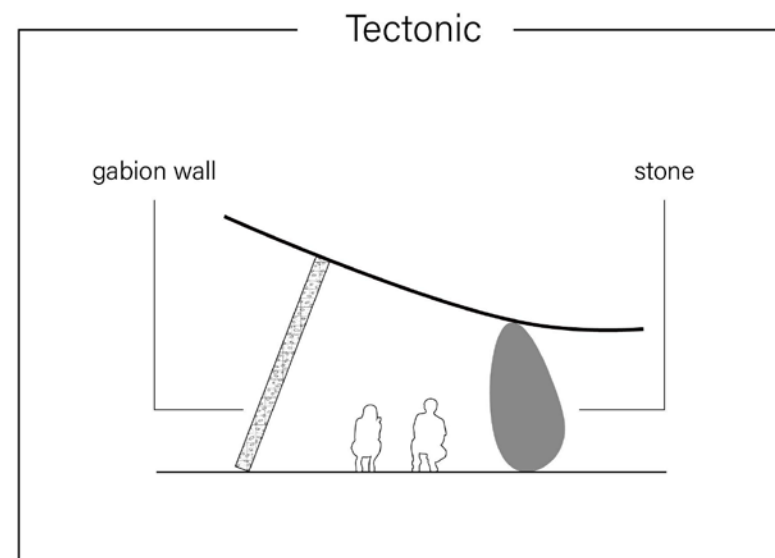
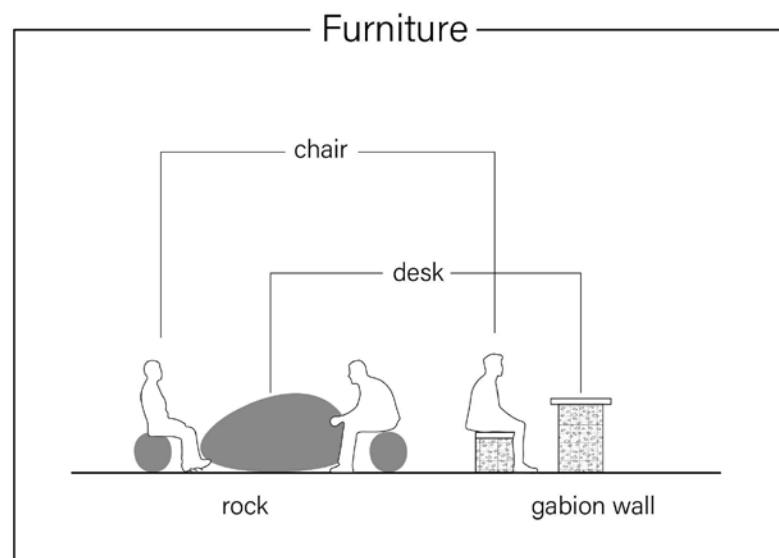
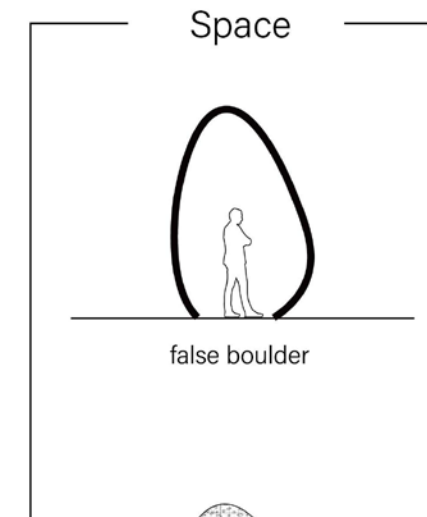
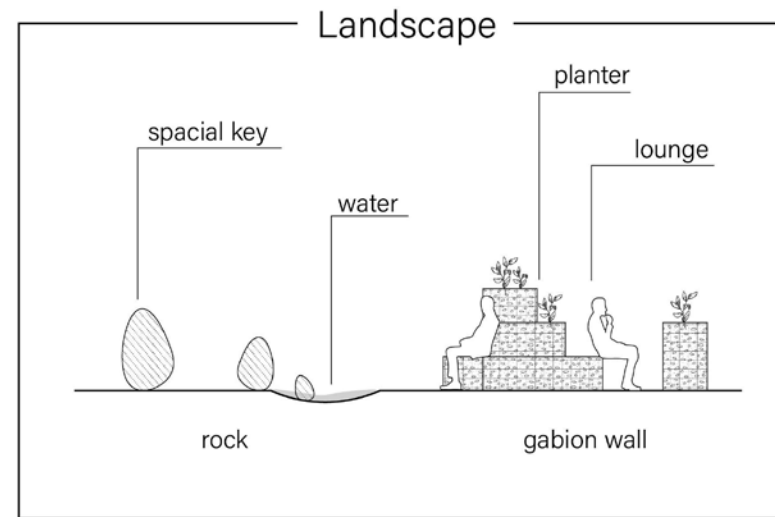
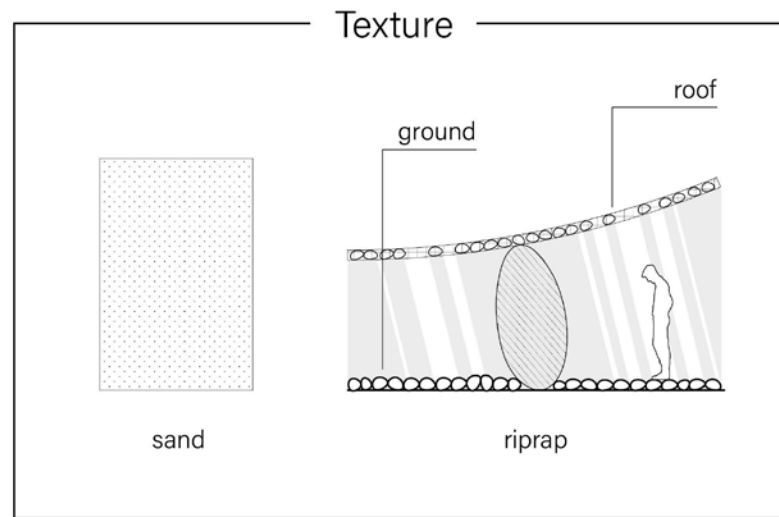


gabion wall as tectonic
stone as furniture

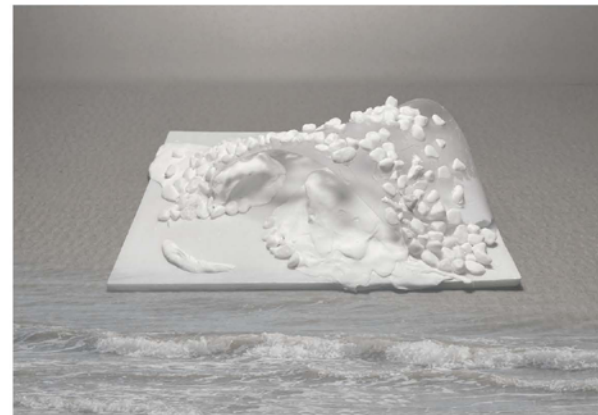
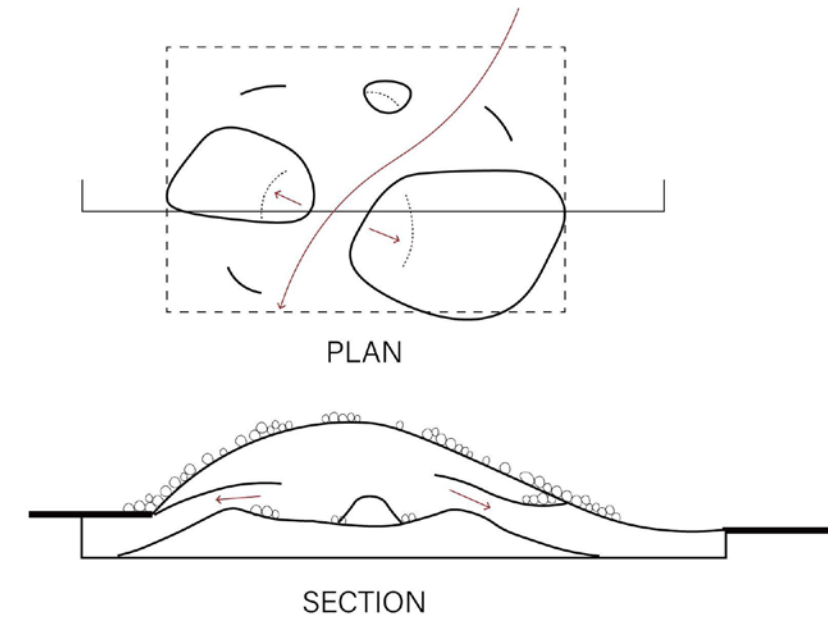
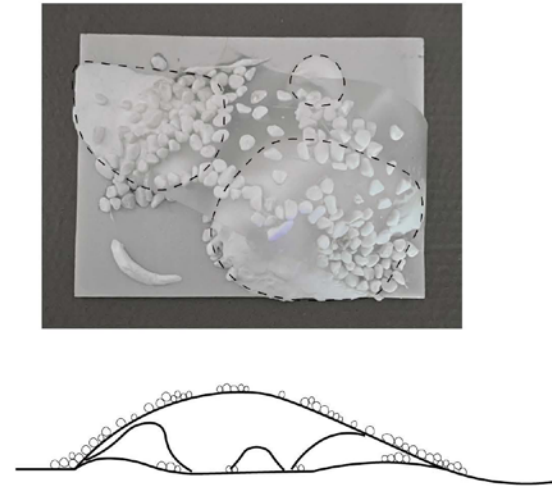
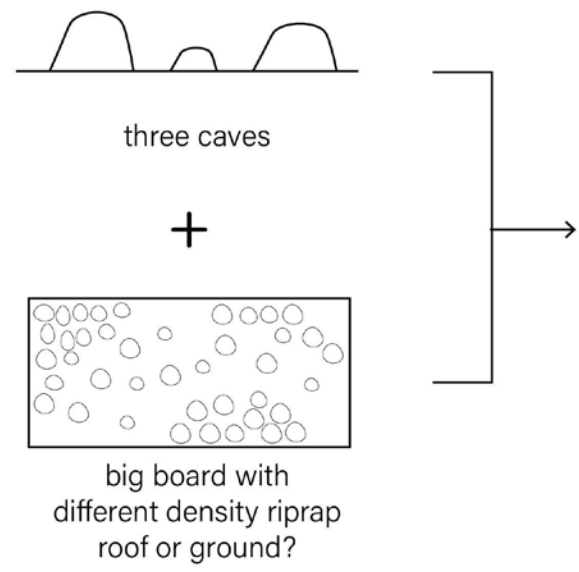
Z3 multi-funtional space



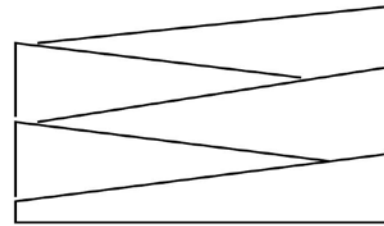
RIPRAP



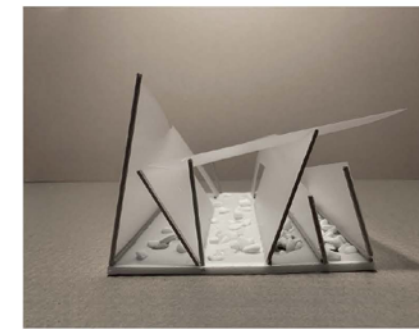
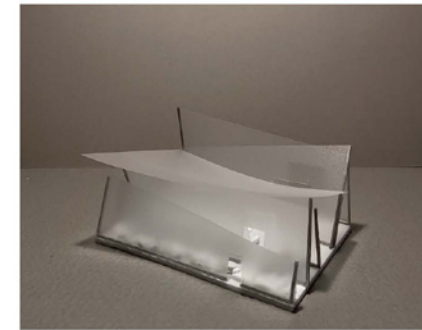
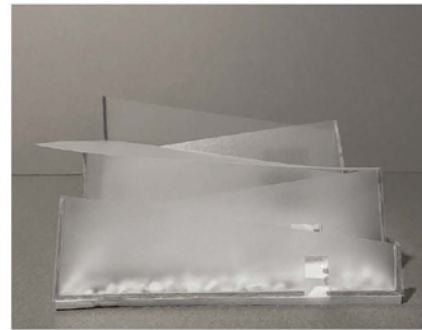
Option 1.1 riprap____texture



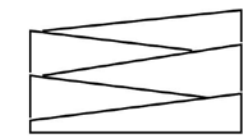
Option 1.2 riprap____texture



Translucent
lightweight thin wall

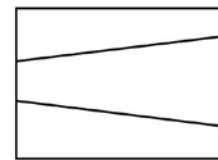


spoon drift
layer by layer



Translucent
lightweight thin wall

+



step
ground

+



roof

