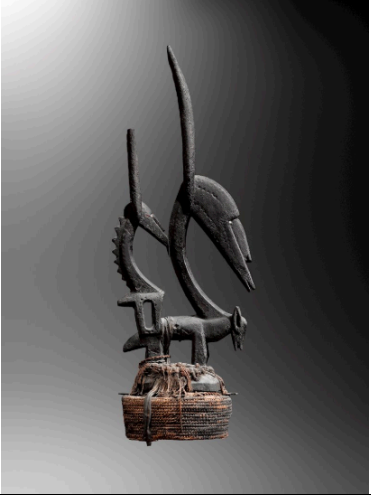
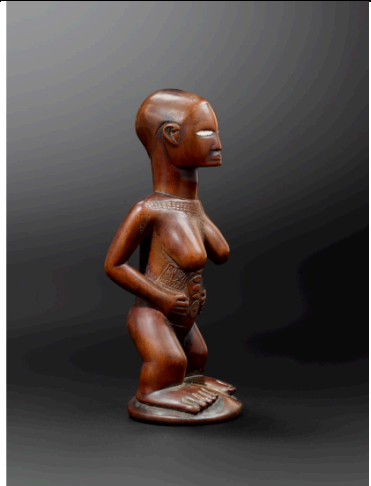


TEFAF MAASTRICHT 2020  
TEFAF TRIBAL

	<p>DIDIER CLAES</p> <p><b>BAMBARA CREST</b> Wood, vegetal fibers Height 40 cm (15.7 in.) Early 20th</p> <p><b>PROVENANCE</b> de Havenon Collection, USA; Private collection, Belgium</p>
	<p>GALERIE BERNARD DULON</p> <p><b>FEMALE FIGURE</b> Wood, earthenware Height 15.5 cm (6.1 in.) Bembe-Gangala People, Congo - 19th century</p> <p>Afrique Noire. Sculpture des collections privées Suisses, La Chaux de Fonds, ociété des Amis des Arts de la Chaux de Fonds, 1971 Bertil Söderberg, Les figures d'ancêtres chez les Babembe, Arts d'Afrique Noire, 1989 Susan Vogel, African Aesthetics, Center for African Art Carlo Monzino collection special edition, 1986 Raoul Lehuard, Art Bakongo-Les centres de style, vol II, Arnouville : Arts d'Afrique Noire, 1989</p>
	<p><b>PROVENANCE</b> Max and Berthe Kofler-Erni Collection, Basel; Carlo Monzino Collection, Lugano</p> <p><b>EXHIBITED</b> Afrique Noire. Sculptures des collections privées Suisses, Musée des Beaux Arts, La Chaux de Fonds, 1971 African Aesthetics : The Carlo Monzino Collection, The center of African Art, New York, 1986</p>



GALERIE BERNARD DULON

**RELIQUARY FIGURE**

Wood plated with copper, brass and iron

Height 56.5 cm (22 in.)

Kota people, Obamba group, Gabon - 19th century

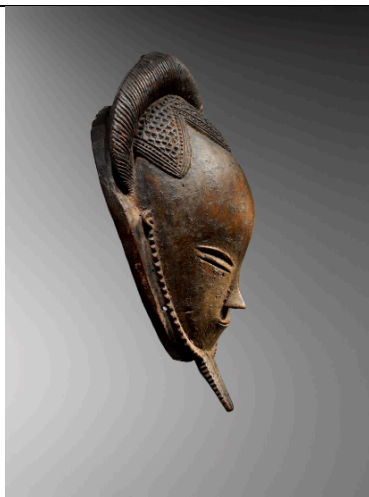
La Gamma Alisa, 2007, n°59, p.224

**PROVENANCE**

Hubert Goldet collection, Paris; Private collection, New York

**EXHIBITED**

New York, The Metropolitan Museum, 'Eternal Ancestors - The Art of the Central African Reliquary', October 2, 2007- March 2, 2008



YANN FERRANDIN

**A GURO 'GU' MASK**

Wood, white pigments with fine encrusted



multilayered grey brown patina

Height 36 cm (14.2 in.)

Republic of Côte-d'Ivoire - 1880-1900 AD

In the 'gu' - a cult venerating a spirit with a beautiful woman's face -, masks of this specific style are exceptionally rare. Some of them were highly venerated and the object of regular libations which caused the superb multilayered encrusted patina on our example.

The features of this mask can be compared to the mask formerly in the collection of Saul and Marsha Stanoff's collection and perfectly illustrate the canons of beauty in Guro Art : in particular, a narrow face whose shape is commanded by the dynamics of the sinuous curve that draw out the high domed forehead, the long diagonals that shape the half-closed eyes, the slender incurved nose and the bulging mouth with the subtle smile. The coiffure slightly differs, with two braids for the Stanoff's mask and only one for our mask. Those details plus many others closely resemble the work of the 'Master of Buafle' - Eberhard Fischer and Lorenz Homberger gave in 1985, during the superb Die Kunst der Guro exhibition, the conventional name "Master of Buafle" to one of the most exceptional anonymous artists in Côte d'Ivoire -, an artist considered today as a genius and whose works are very rare -a dozen or more masks- active between 1880-1930 in the southeastern part of the

	<p>Guro territory. The tragus of the ears are carved in our example and this feature is another 'signature' in works by the Buafle master. Carved by the master himself or by an artist from his circle, finally with all its features and its superb patina, plus the traces of an ancient monochromatic decor in white pigments on the center-back of the coiffure -a stylized 'saba' amulet, a jewelry reserved for a high-rank woman-, this mask can be considered as a Guro culture masterwork.</p> <p><b>PROVENANCE</b> Collection Mr R.R., Paris; Active collector between the 1920's and the 1940's; By descent to the family</p>
	<p>BERNARD DE GRUNNE</p> <p><b>BANDA STATUE</b> Wood Height 57 cm (22.4 in.) Mobaye region, DRC</p> <p><b>LITERATURE</b> Georges Meurant, <i>Tribal Art Magazine</i>, La sculpture oubanguienne, Belgium, Summer 2007, 17, p.99, fig. 8 Georges Meurant, J.-L. Grootaers, <i>Ubangi - art et cultures au coeur de l'Afrique</i>, Fonds Mercator, « La sculpture oubanguienne », Brussels, Belgium, 2007, p 176, cat. n° 4.49 Bernard de Grunne, <i>Mains de Maîtres ; A la découverte des grands sculpteurs d'Afrique</i>, Brussels, Espace Culturel BBL, 2001, Cat. N° 81</p> <p><b>EXHIBITED</b> Brussels, Espace Culturel BBL, Mains de maîtres, 2001, 22 March – 24 June 2001 Berg en Dal, Afrika Museum, Ubangi - art et cultures au coeur de l'Afrique, 13 October 2007 – 31 March 2008</p>
	<p>BERNARD DE GRUNNE</p> <p><b>KIFWEBE SONGYE MASK, D.R.C.</b> Wood Height 42 cm (16.5 in.)</p> <p><b>EXHIBITED</b> Brussels, Cercle artistique et littéraire du Théâtre Royal du Parc, '1.000 objets nègres de la collection de Mlle Walschot vous transportent dans le monde merveilleux des Noirs', 23 December 1933-7 January 1934</p>



GALERIE MONBRISON

**ATTIE FIGURE**

**UNKNOWN**

Wood Height 46 cm (18.1 in.)

Ivory Coast - Circa 1880-1930

**PROVENANCE**

Collection Mr René Ajalbert, Paris; Collection Mr Edward Klejman, Paris

**EXHIBITED**

Taipeh, National Museum of History Visions d'Afrique, Under the direction of Helene Joubert, 2003



LUCAS RATTON

**SONGYE FIGURE**

Wood, metal, fiber and cloth

Height 64 cm (25.2 in.)

Democratic Republic of Congo - 19th century

**PROVENANCE**

Collection Pierre Darteville's, Brussels; Collection Jan Lundberg's, Malmö; Collection Anita Schröder's, Malmö; Galerie Ratton-Hourdé, Paris

**LITERATURE**

Galerie Ratton-Hourdé, *Magie Noire*, Paris, 2009, 72-73

François Neyt, *La redoutable statuaire Songye d'Afrique centrale*, Brussels, 2004, 174

**EXHIBITED**

Galerie Ratton-Hourdé, *Magie Noire*, June 2009

PRINCIPAL SPONSOR TEFAF Maastricht



TEFAF  
Barbara Strozziilaan 201  
1083 HN Amsterdam  
The Netherlands  
+31 20 303 6400

TEFAF New York  
1 Rockefeller Plaza,  
11<sup>th</sup> Floor,  
New York, NY 10020,  
USA  
+1 646 202 1390

[www.tefaf.com](http://www.tefaf.com)