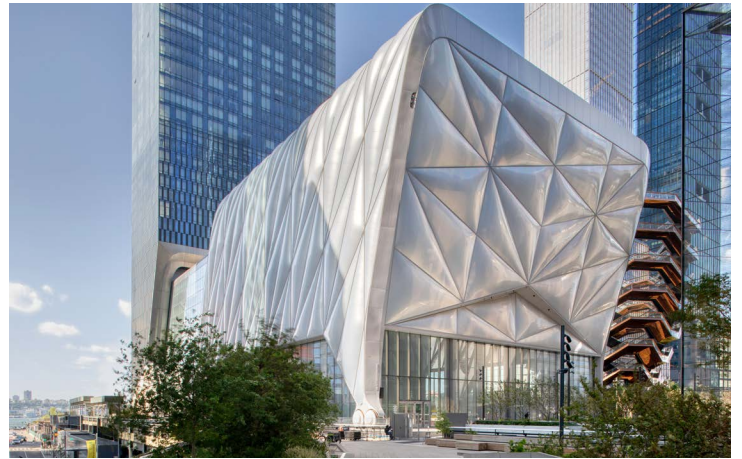

ARRIVING AT THE SHED

Thank you for planning a visit to The Shed. We're looking forward to welcoming you for *Open Call*. This guide will help you prepare for what to expect during your visit. We hope it makes your visit as comfortable as possible.



The Shed's façade from the north across Hudson Yards Public Square. (Photo: Brett Beyer.)

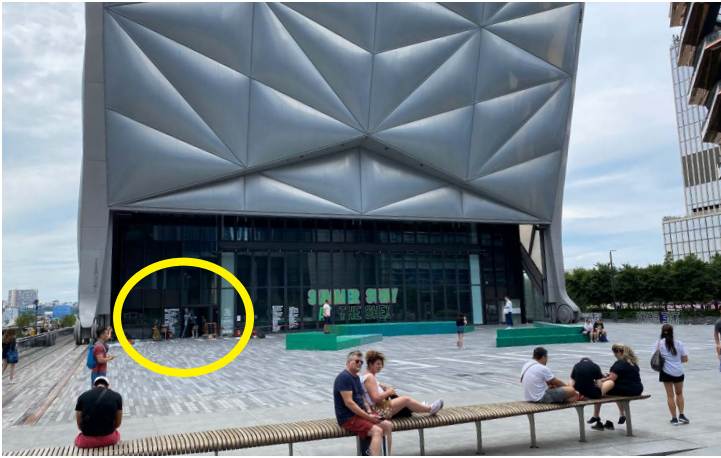


The Shed's façade seen from the southeast while approaching Hudson Yards on the High Line. (Photo: Brett Beyer.)

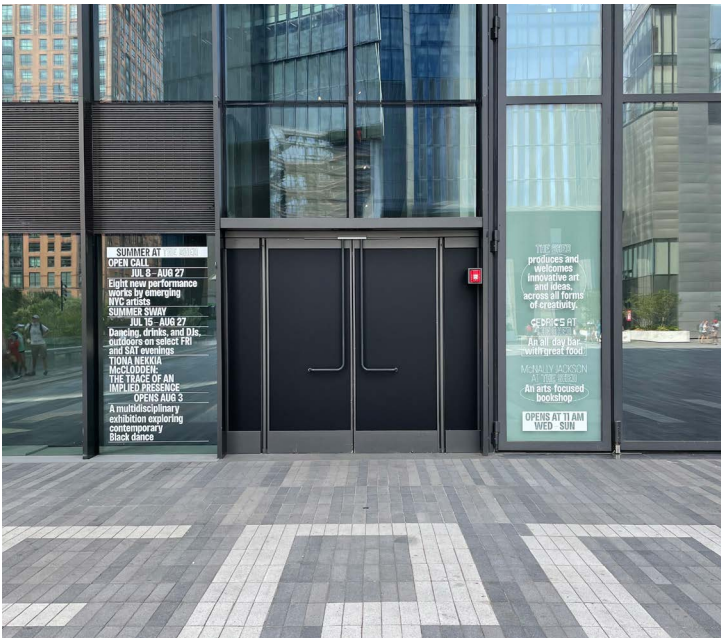
This summer, you are welcome to enter the building through one of three entrances:

1. on The Shed's Plaza
2. at 545 West 30th Street
3. on Hudson Boulevard

Arriving at The Shed cont'd



The Shed's Plaza from the southeast corner adjacent to the entrance to the High Line. The Shed's Plaza entrance is situated at the southwest corner of the public space.



The Plaza entrance includes two doors that pull open. The Plaza is level with the floor inside the entrance.

The Plaza is adjacent to the High Line, on the same level as the Hudson Yards Public Square and the 34 St–Hudson Yards/7 train subway station, which is serviced by an elevator.

On Friday and Saturday evenings from 5 pm to sunset, The Shed's Plaza will be lively, with visitors enjoying DJs, dance, and music performances outside. There will be wooden structures covered in soft, recycled rubber that you can sit or lounge on to rest or enjoy the evening.

The Plaza entrance at the southwest corner of the building is staffed by a friendly member of our Visitor Experience team who will greet you. They'll be wearing a black t-shirt and ID badge on a purple lanyard. At this entrance, there are two glass doors that open outward. The floor inside the building is level with The Plaza as you enter.

The Plaza doors have a total clearance of approximately 66 inches.

Arriving at The Shed cont'd



The Shed's 30th Street Lobby entrance seen from the sidewalk just west of the doors, toward 11th Avenue. In the photo are two sets of push/pull doors, one set of automated doors, and The Shed's white logo above them.

The 30th Street Lobby entrance, between 10th and 11th Avenues, is on the street level beneath the Plaza level (beneath the High Line on West 30th Street). The 30th Street Lobby entrance is equipped with a push button to open the door, with a friendly staff member to greet you as you enter the building. They'll be wearing a black t-shirt and ID badge on a purple lanyard.

The 30th Street doors have a total clearance of approximately 76 inches.



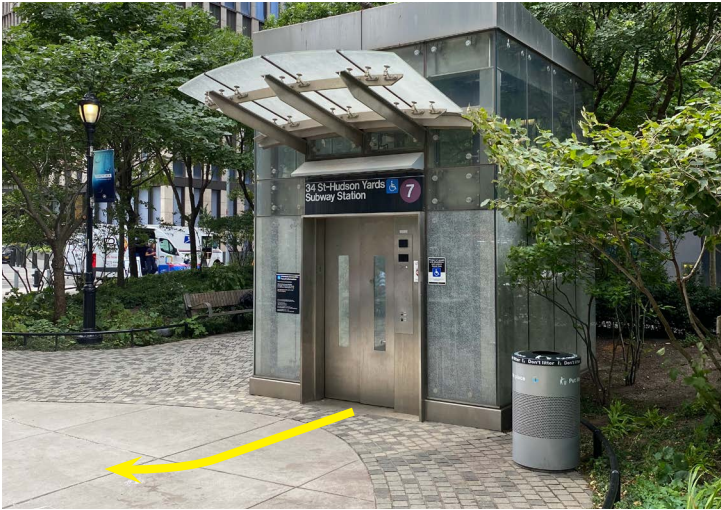
The Shed's Hudson Boulevard entrance seen from the loading zone in front of the doors. In the photo are one set of push/pull doors and one set of doors that open automatically when you gently pull their handles. Above the doors is The Shed's white logo.

The Hudson Boulevard entrance is close to 11th Avenue and across from the Vessel. The entrance is marked with The Shed's name above it in white letters. This entrance is equipped automatic doors and a friendly staff member to greet you as you enter the building.

The Hudson Boulevard doors have a total clearance of approximately 76 inches.

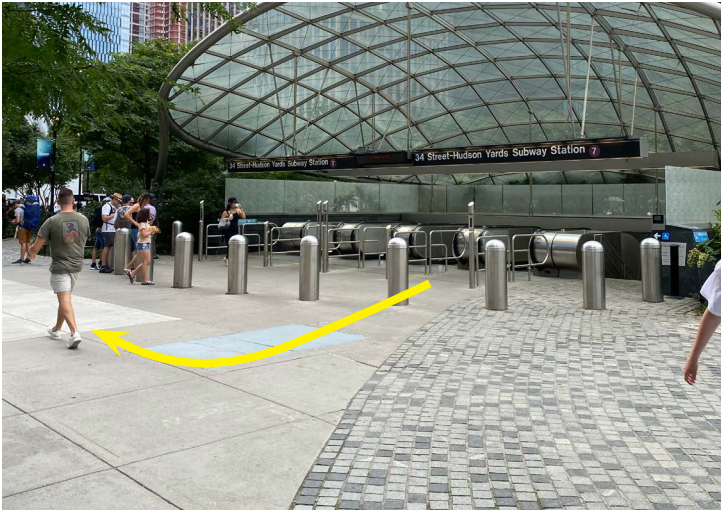
This entrance provides an accessible passenger loading zone allowing for automobile pick-up and drop-off access to the building.

Arriving at The Shed cont'd



The closest accessible subway station is the 34 St-Hudson Yards/7 train station. It's the final stop on the 7 subway line in Manhattan arriving from the east side and Queens.

The elevator that services the 34 St-Hudson Yards 7 train entrance. Upon exiting the elevator make a slight right to continue south toward Hudson Yards Public Square and The Shed.



The the 34 St-Hudson Yards 7 train station's main entrance. Upon exiting the escalator, make a right to continue south toward Hudson Yards Public Square and The Shed.



Continuing across 31st Street, follow the sidewalk along Hudson Boulevard toward the Shops at Hudson Yards and the Vessel.

Arriving at The Shed cont'd



As you pass the Shops and the Vessel, you will notice The Shed's puffy façade and the open space of The Plaza straight ahead to the south.



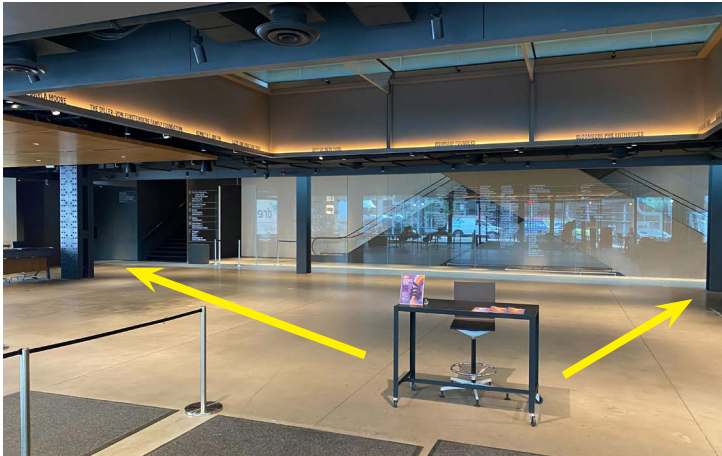
From Hudson Boulevard, you can move to the left onto The Plaza and enter the building. Or, you can continue to follow Hudson Boulevard as it curves and slopes down toward 11th Avenue, where you will find The Shed's Hudson Boulevard entrance.

The bus lines with stops closest to The Shed include the M11 along 10th Avenue, the M12 along 11th Avenue, and the M34 SBS, which provides select bus service to Hudson Yards along 34th Street.

The Metropolitan Transit Authority operates the Access-A-Ride program as a service for people with disabilities. Please visit the MTA's Access-A-Ride webpage for more information.

There are two parking garages in close proximity to The Shed on West 30th Street between 10th and 11th Avenues. One is on the north side of the block, beneath Hudson Yards. An additional garage is located across the street from The Shed at 552 West 30th Street.

The 30th Street Lobby



The 30th Street Lobby seen from its entrance. To the left in the far corner, you will find the escalators and an elevator. To the right you will find the bar, Cedric's, and restrooms and an elevator.

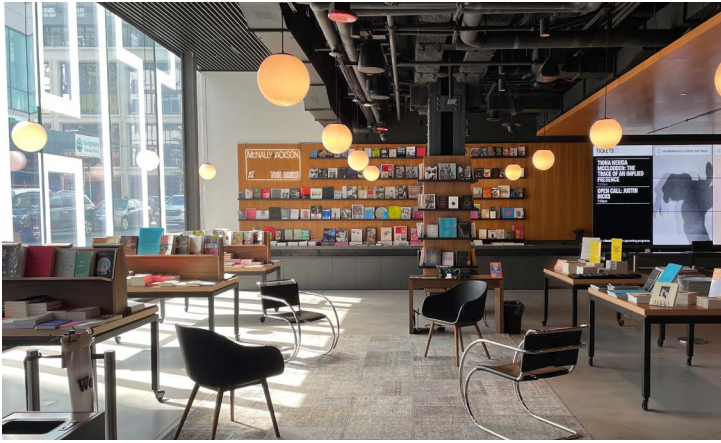


Cedric's with its variety of seating: bar stools, low benches and stools, tables, and armchairs. A bar runs along the eastern wall and faces the rest of the lobby.

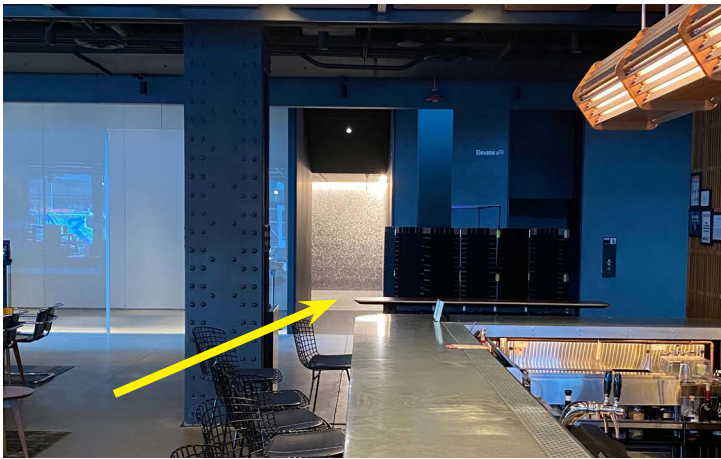
A friendly staff member to greet you as you enter the 30th Street Lobby. They'll be wearing a black t-shirt and ID badge on a purple lanyard. They will be sitting at a desk in front of the entrance.

Before a performance, the Lobby may be lively. Cedric's, a bar, is located in the lobby. Friends and visitors may be sharing drinks and snacks while music plays on overhead speakers. When less crowded, Cedric's offers a calm, cool spot to sit and relax before or after a performance. The lobby is a mixed masked/maskless space. A staff member can help direct you to another area of the building to gather before a performance if you would prefer a mask-only environment.

The 30th Street Lobby cont'd

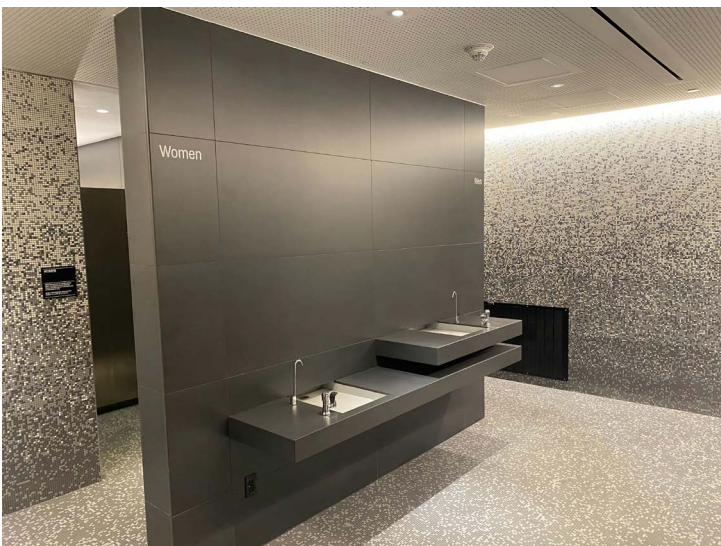


The lobby also includes McNally Jackson at The Shed, an arts-focused bookshop. The space includes armchairs for resting. During the day it is filled with natural light. In the evenings, the warm glow of globe-like light fixtures fills the space.



Accessible restrooms are located in the back corner of the lobby, behind the escalators and adjacent to the bar. These restrooms include one with stalls and one with stalls and urinals. The nearest private, all gender restroom is located on Level 4.

In the northeast corner beside the bar, you will find restrooms and an elevator.



There are two restrooms on this floor, with water fountains in the entryway. One restroom includes stalls, and the other includes stalls and urinals. The clearance at the entrance to both restrooms is approximately 34 inches.

The 30th Street Lobby cont'd



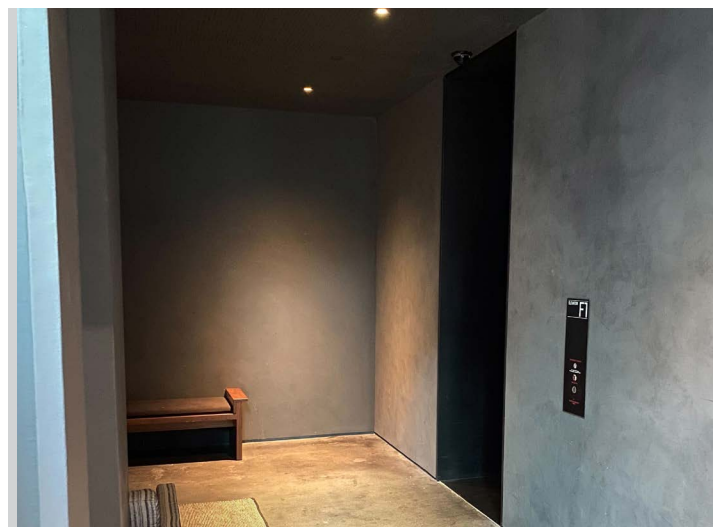
The lobby escalator is accessed through an opening in the glass wall along the north end of the lobby (facing the 30th Street entrance). A security guard will greet you at this escalator entrance and will check if you have your ticket.



The entrances to the lobby elevators have a clearance of approximately 43 inches.

At the back of the lobby, you will find the escalator and elevators to the upper floors. The escalator is directly across from the main lobby doors, behind a transparent glass wall. Two elevators are located at either back corner of the Lobby, on the same wall as the escalator. One to the left and one to the right. The escalators and elevators both take you up to the main hallway on each level where you will find the entrances to the performance spaces. A staff member at the entrance to the escalator will check if you have a ticket. You should have received your tickets in an email. You can find them by searching for the address tickets@theshed.org.

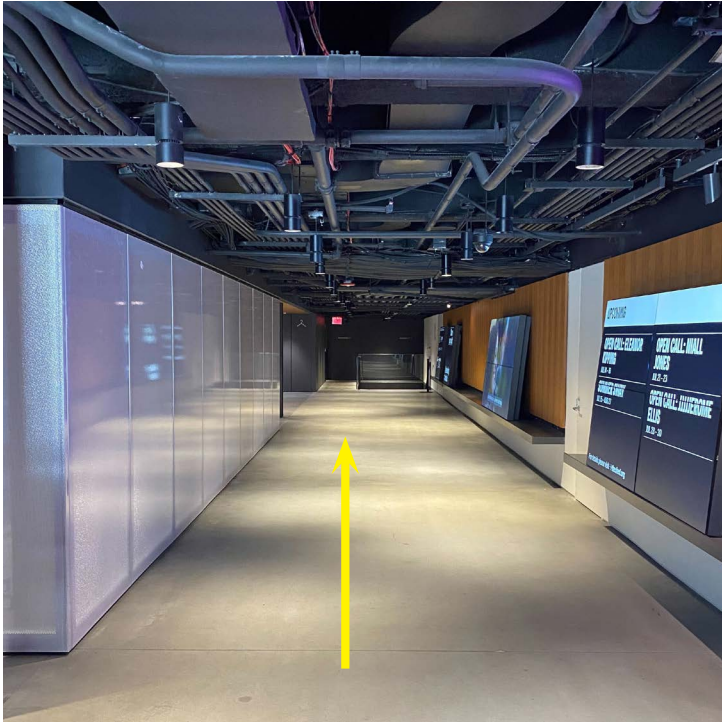
Performances of Kinetic Light's *Wired for Open Call* take place in The Griffin Theater on Level 6.



The lobby escalator in the northwest corner (to the left when you enter the lobby) includes a waiting area.

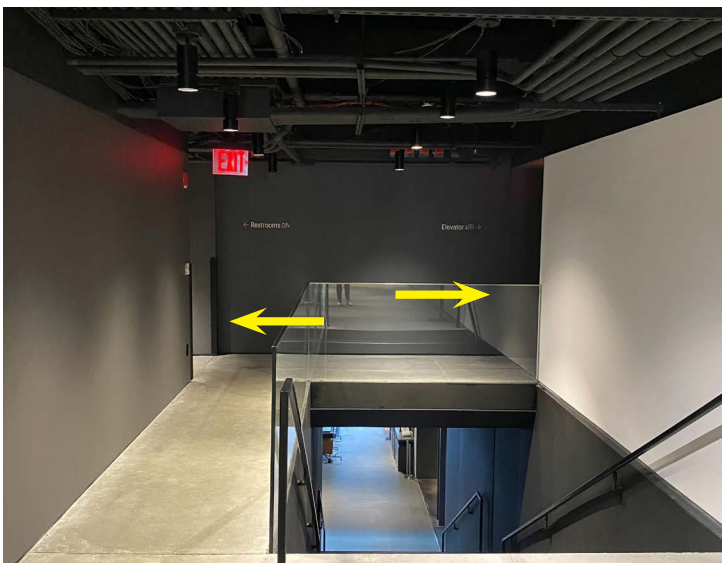
The Mezzanine

(Hudson Boulevard entrance level)



The mezzanine level after entering through the Hudson Boulevard entrance.

From the entrance doorway, continue straight ahead, past the video screens and staircase, and then turn left. Down a short hallway you will find three restrooms: one with stalls, one with stalls and urinals, and a private, all gender restroom.



A stairway leads down into the 30th Street Lobby. To the left behind the stairs, you will find three restrooms (one with stalls, one with urinals and stalls, and one private restroom). To the right, you will find the elevator.

The staircase leads down into the main 30th Street Lobby. Behind the staircase to the right is an elevator that you can use to reach the lobby or to go up to Level 2 (Gallery), 4 (The Overlook), 6 (The Griffin Theater), or 8 (The Tisch Skylights/Quiet Space)

Performances of Kinetic Light's *Wired for Open Call* take place in The Griffin Theater on Level 6.

Level 2

(Plaza entrance level)



The escalator landing on Level 2 after entering through The Plaza. In addition to the escalators, you will find an elevator at either end of the long landing.

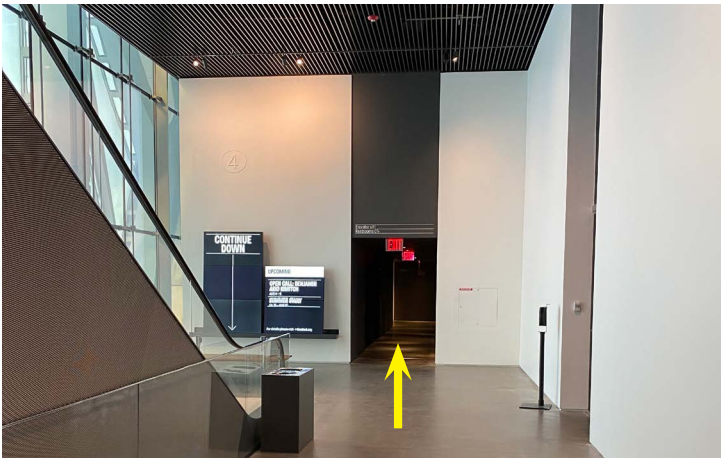
Once inside, the building feels airy with high ceilings and large windows along the escalator bank a short distance down the hall from the entrance.

Immediately on your left after entering will be an elevator if you would prefer to ride it to Level 6 for The Griffin Theater.

The escalators and elevators both open onto the hallway on each level where you will find the entrances to the performance spaces.

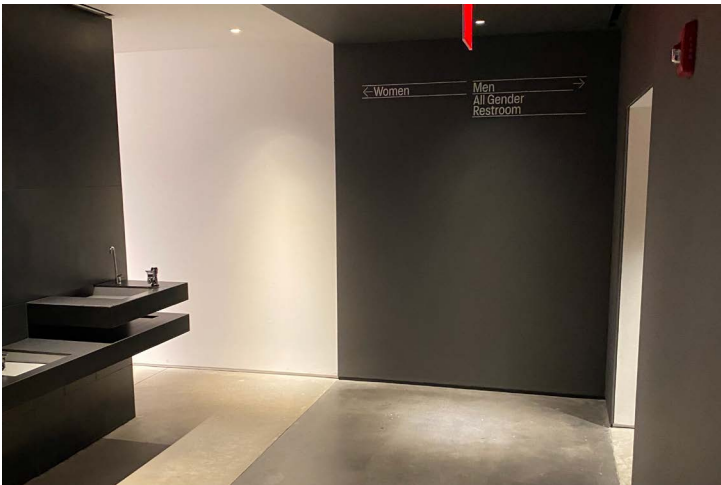
There are restrooms on the floor below in the lobby and on the floors above. The closest accessible and all gender restrooms are on Level 4, up one level, or on Level 6.

Level 4 Restrooms

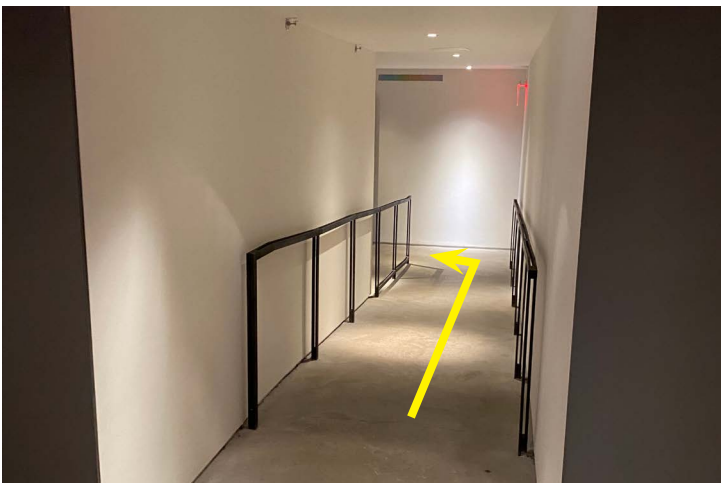


The restrooms are at the end of a hallway with a lower ceiling.

The nearest restrooms to the Plaza entrance are located on Level 4, on the west side of the building down a hallway with dark gray walls. You will find one restroom with stalls and one with stalls and urinals, as well as a private, all gender restroom.



At the end of the gray hallway to the left is a restroom with stalls. Turn right down a hallway with white walls to find a restroom with stalls and urinals as well as a private, all gender restroom.



Take a left at the end of the hallway with white walls to find the restroom with stalls and urinals and a private, all gender restroom.

Level 6

The Griffin Theater



The doors to The Griffin Theater are a bright blue, with the orange and white Open Call title high above them.

Tickets to *Open Call* will be checked by a staff member at the entrance to The Griffin Theater, once you are on Level 6. You should have received your tickets in an email. You can find them by searching for the address tickets@theshed.org.

The Griffin Theater doors have a total clearance of approximately 75 inches.

Level 6 The Griffin Theater cont'd

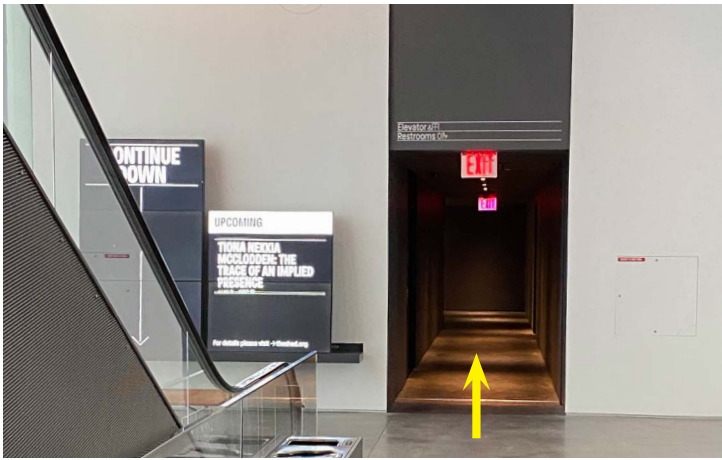


The Griffin Theater's seats fold down like common theater seats.

Once inside the theater, seating for performances is general admission, so you can choose from any available spot. The seats have armrests and thick cushions, and some are folding chairs that flip up as you stand up from them.

If you would like help in finding a seat, a staff member at the entrance can guide you. If ASL interpretation is available the day of your performance, a staff member will be available to direct you to a reserved section of seats close to the interpreter.

Level 6 The Griffin Theater cont'd



The nearest restrooms are located on this floor, to your right as you exit the theater. Follow the hallway away from the escalator landing. You will find one restroom with stalls and one with stalls and urinals, as well as a private, all gender restroom.



The restrooms are located at the end of the hallway.

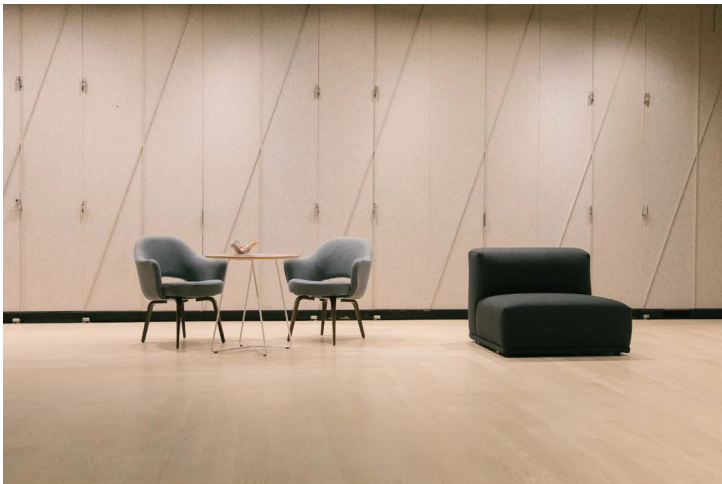


The restrooms on Level 6 include one with stalls and one with stalls and urinals behind a wall with two water fountains. Along the far wall is a single door leading to a private, all gender restroom.

Quiet Space (Level 8)



The entrance to the Quiet Space is a wide doorway that remains open off of the elevator landing on Level 8.



A variety of seating is spread throughout the room in pods so you can relax near others or alone.

The Quiet Space on Level 8 is available for you to find a calm room to rest and reflect in at any point during your visit. The room includes sofas, chairs, and tables with pens, paper, and other materials. Seating and tables are spaced out in pods across the room.

Restrooms are available on this floor by following a hallway similar to the ones on Levels 4 and 6. (See page 15.) Restrooms on this floor include one with stalls, one with stalls and urinals, and a private, all gender restroom.

Quiet Space cont'd



Desks are available with hand sanitizer, tissues, writing utensiles, and other materials.



Seating options include low, wide ottomans and sofa-style seating with cushioned back support.

Any questions?

For additional information about accessibility at The Shed, visit our website's [Accessibility](#) page.

For any additional access needs or requests, please email accessibility@theshed.org or call (646) 455-3494.