



THE SHED

WELCOME TO THE SHED

An Arts Center for the 21st Century

The Shed is a new cultural institution of and for the 21st century. We produce and welcome innovative art and ideas, across all forms of creativity, to build a shared understanding of our rapidly changing world and a more equitable society.

In our highly adaptable building on Manhattan's west side, The Shed brings together established and emerging artists to create new work in fields ranging from pop to classical music, painting to digital media, theater to literature, and sculpture to dance. We seek opportunities to collaborate with cultural peers and community organizations, work with like-minded partners, and provide unique spaces for private events.

The Shed was designed to break with the traditions that separate art forms and audiences. By minimizing social and economic barriers to entry, we offer a warm, welcoming space for innovation and dialogue. Embracing technology, we work with creative thinkers and partners to create transformational digital experiences on-site and online. Using our flexible infrastructure and operational capabilities, we can produce performances, exhibitions, events, and gatherings of almost any type in expansive, multi-use venues that allow for social distancing. Driven by our belief that access to new art and ideas is a right, not a privilege, we present engaging experiences and forge deep bonds between our artists and audiences.

As an independent nonprofit that values invention, equity, and generosity, we are committed to advancing art forms, addressing the urgent issues of our time, and making our work impactful, sustainable, and relevant to the local community, the cultural sector, New York City, and beyond.

SPACES

SPACES

The McCourt



The Shed's signature space, The McCourt, is an 18,000-square-foot venue for galas, fashion shows, award ceremonies, performances, and other large-scale events. It can accommodate a seated audience of 900 and a standing audience of 1,200. The ceiling, which serves as a theatrical deck, allows for sound and light control across the entire area.

Dimensions: 139 x 130'
Ceiling Height: 110'
Area: 18,000 SF
Reception: 1,200
Theater-style: 900
Seated Dinner: 850

Private event in The McCourt. Photo: Ira Lippke.



Private event in The McCourt. Photo: Mark Scardilli.



A conversation during Unfinished in The McCourt. © Unfinished, 2022.



The Shed Fall Gala, November 13, 2023. Photo: Ryan Muir.



Polestar 3 Launch in The McCourt. Photo: Jackie Lee.

SPACES

The Griffin Theater



The Shed's Kenneth C. Griffin Theater is an inviting space that can be transformed into two smaller spaces to create more intimate event settings. The Griffin Theater's flexible design can accommodate events of all types, including those that require a private and even soundproof environment.

Dimensions: 140 x 84'
Ceiling Height: 22'
Area: 11,760 SF
Maximum Capacity: 500
Seated Dinner: 500

A panel discussion in The Griffin Theater during Unfinished. © Unfinished, 2022.



Thom Browne SS22. Photo: Dominik Bindl/Getty Images.



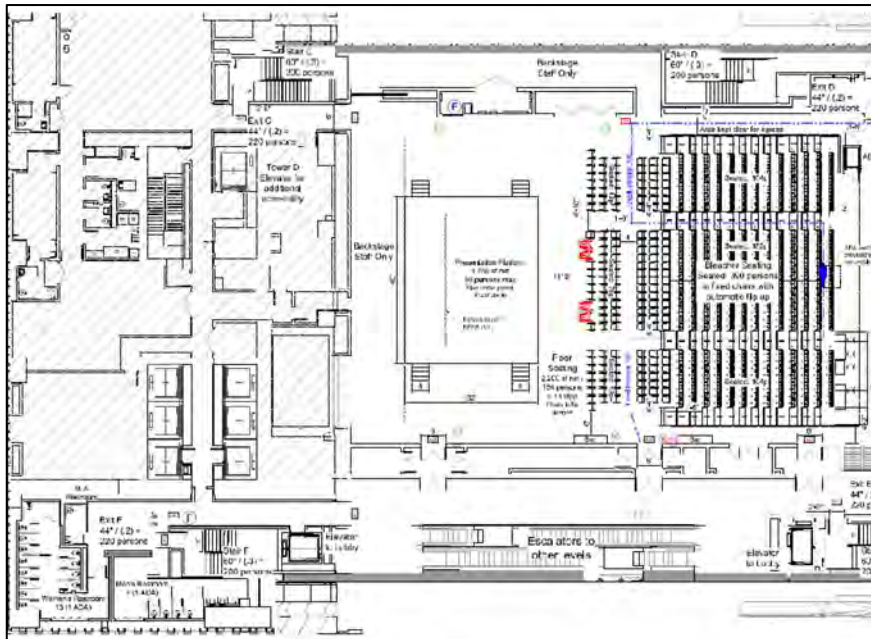
The Shed Fall Gala, November 9, 2021. Photo: Tori Mumtaz.



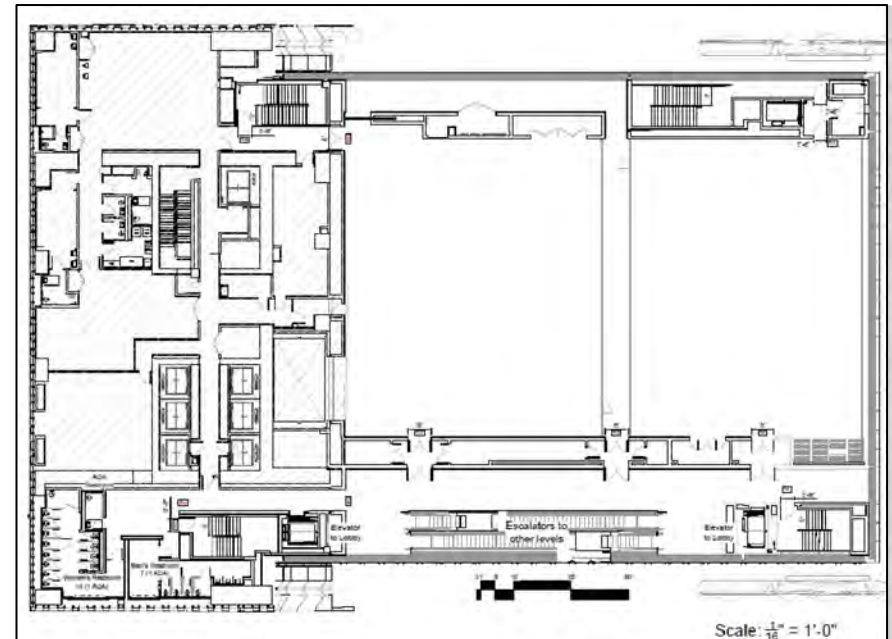
Straight Line Crazy in The Griffin Theater. Photo: Brett Breyer.



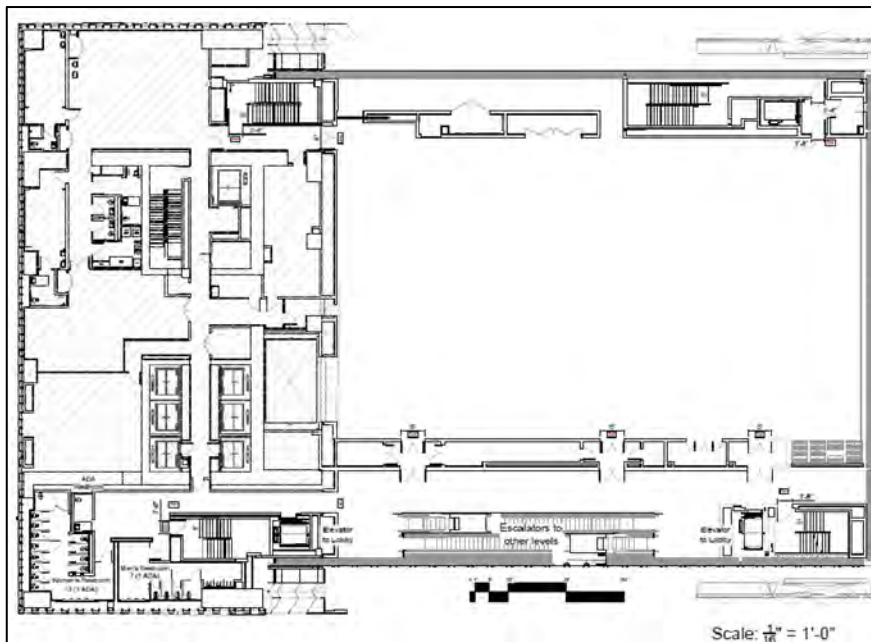
Theater seating in the Griffin Theater. Photo: Christopher Garcia Valle.



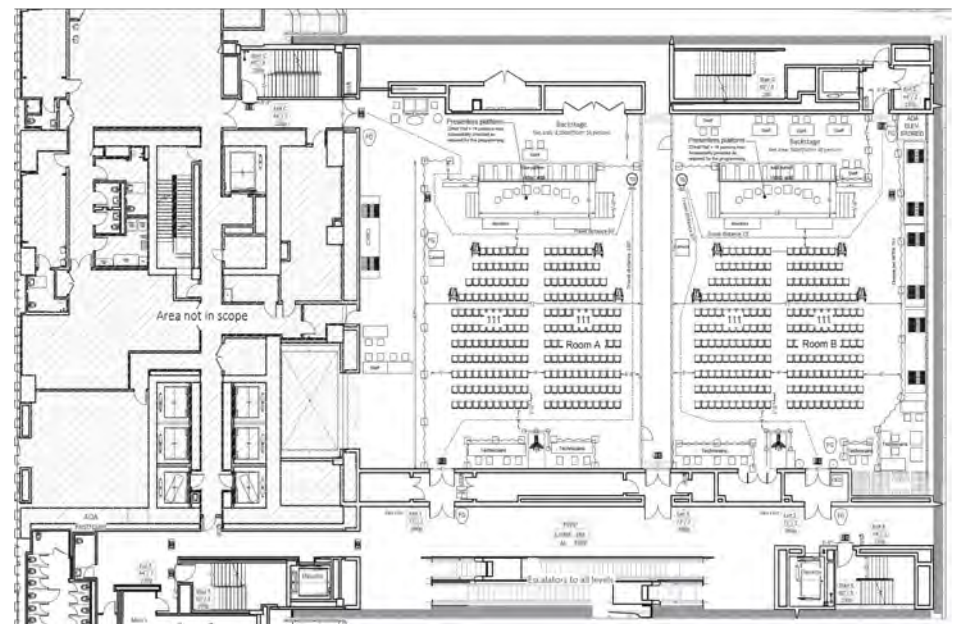
The Griffin Theater stage and bleacher seating for 400.



The Griffin Theater divided into two performance spaces by pressure wall.



The Griffin Theater's full space.



The Griffin Theater split into two spaces, each with seating for 222.

SPACES

Galleries



The Shed's column-free, museum-quality galleries on Levels 2 and 4 provide large, open spaces for events. The galleries can also provide for additional opportunities for engagement during events.

Dimensions:

Level 2 Gallery: 140' x 84'
Level 4 Gallery: 80' x 84'6"

Ceiling Height: 19'

Area:

Level 2 Gallery: 11,584 SF
Level 4 Gallery: 6,760 SF

Maximum Capacity

Level 2 Gallery: 431
Level 4 Gallery: 300

A panel discussion in the gallery during TOKALA.



Open Call 2023 Group Exhibition in the Level 2 Gallery. Photo Ryan Muir.



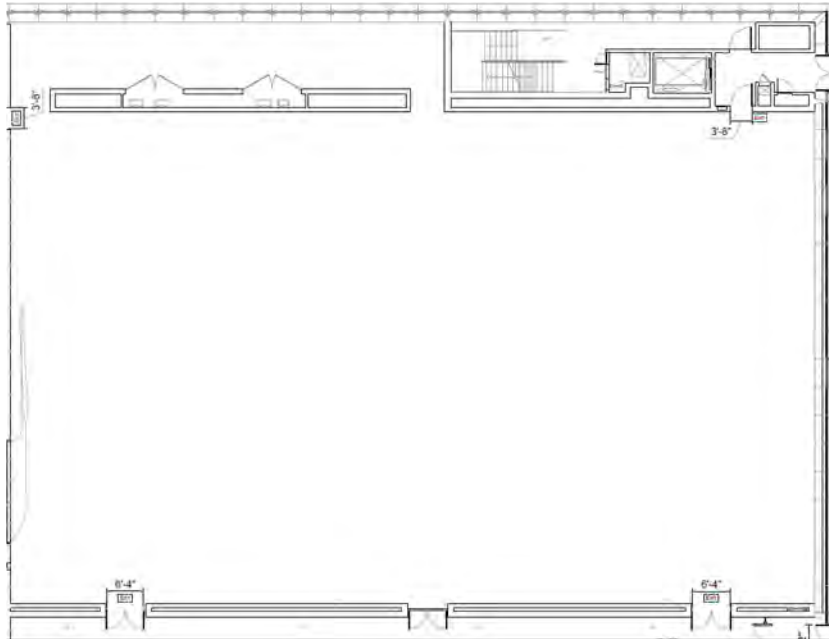
Installation View of Tina Kim Gallery's booth at Frieze New York with a work by Miree Lee in the foreground. Courtesy: Tina Kim Gallery.



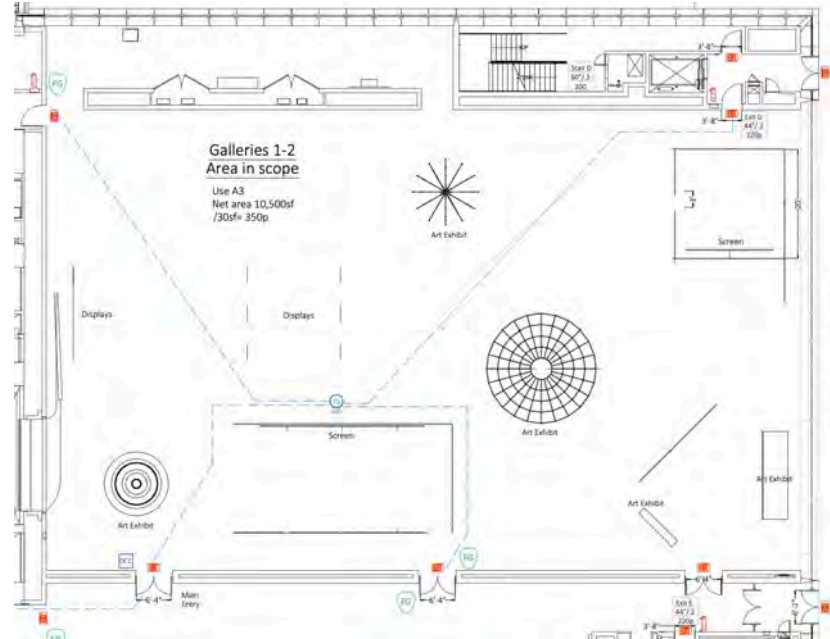
A summer exhibition opening party in the Level 2 Gallery. Photo: Scott Rudd Events.



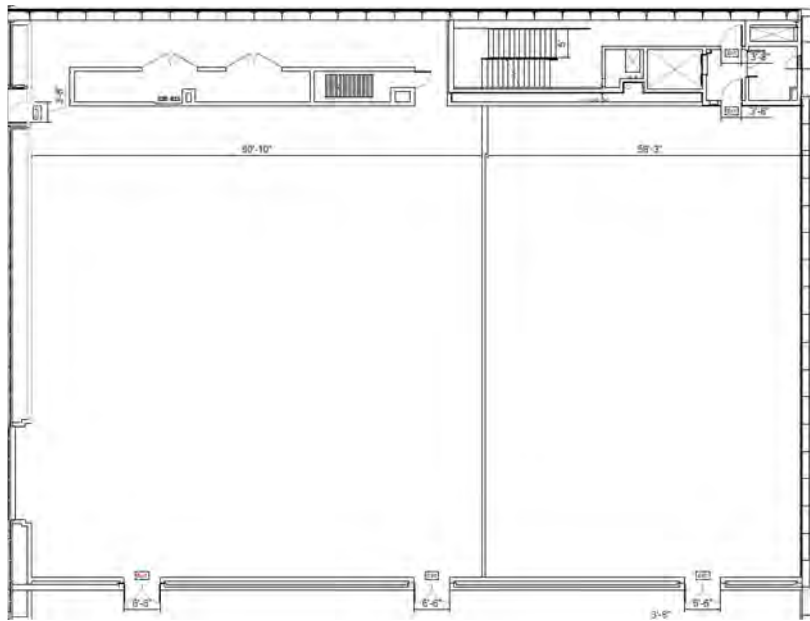
A client meeting in the Level 4 Gallery.



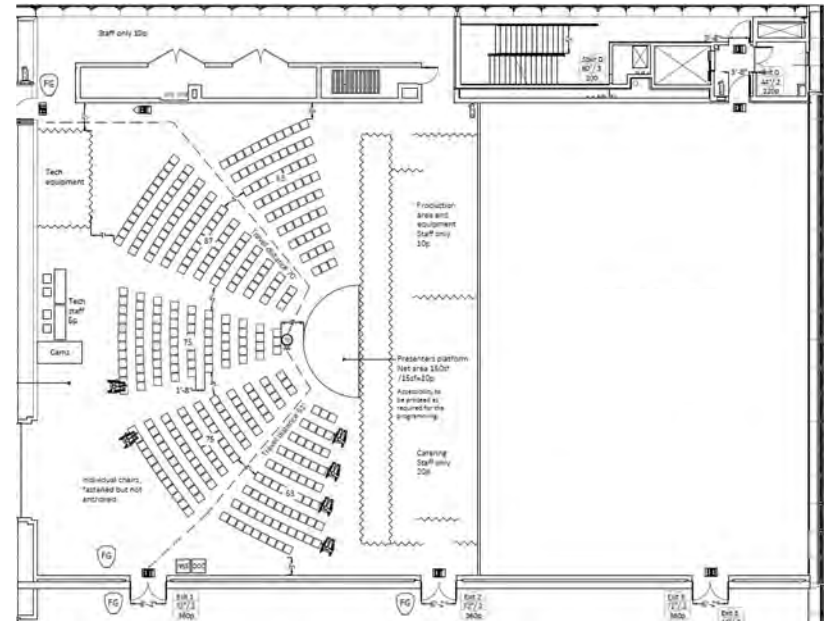
Level 2 Gallery.



Open Call 2023 Group Exhibition in the Level 2 Gallery.



Level 4 Gallery and Overlook.



Level 4 Gallery stage and theater style seating for 364.

SPACES

The Overlook



Adjacent to the Level 4 Gallery, the Overlook affords spectacular views of The McCourt and The Shed's only permanent art installation, *In Front of Itself* by Lawrence Weiner. The accordion-style, Bator doors provide flexibility so the Overlook can be opened and incorporated into McCourt events or closed to provide utmost privacy for elegant dinners, conversations, and receptions.

Dimensions: 85 x 56'
Ceiling Height: 19'
Area: 4,760 SF
Maximum Capacity: 350
Seated Dinner: 250

The Shed's Artistic Director's Dinner in the Overlook. Photo: Scott Rudd Events.



Food and beverage set-up in the Overlook.



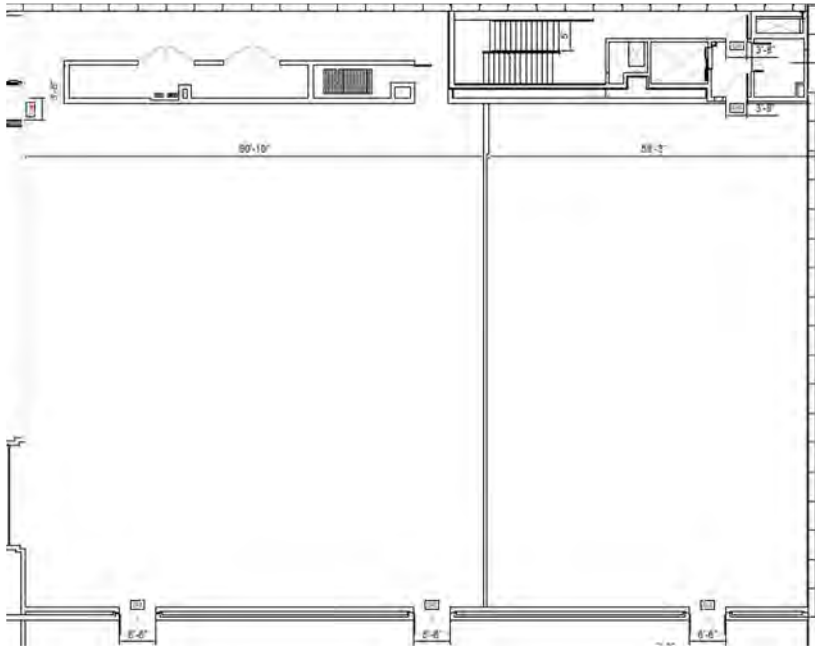
The Shed's Mirrorball reception in the Overlook. Photo: Ryan Muir.



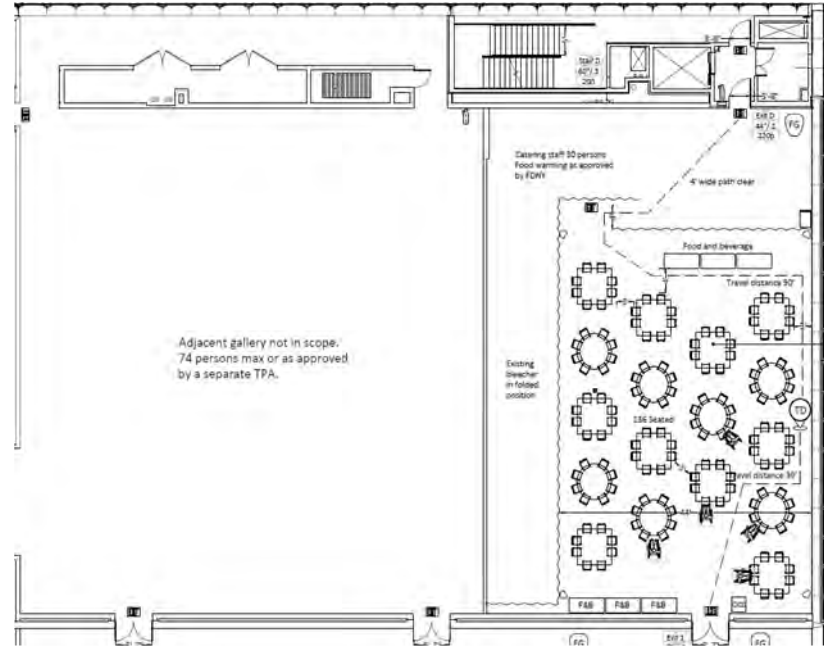
A staged play reading in the Overlook.



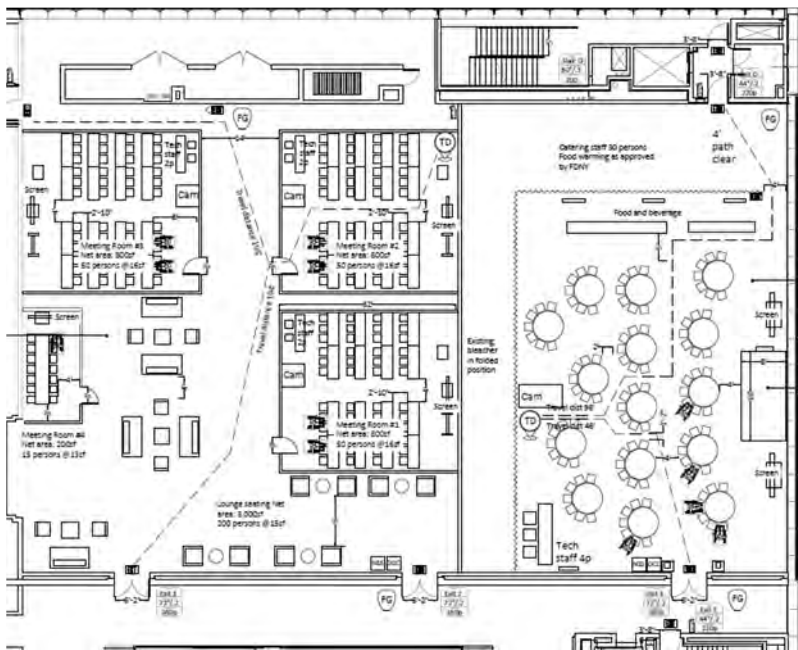
Indigenous Rights, Art, and Environmental Justice, March 4, 2023.
Photo: Heather Cromartie.



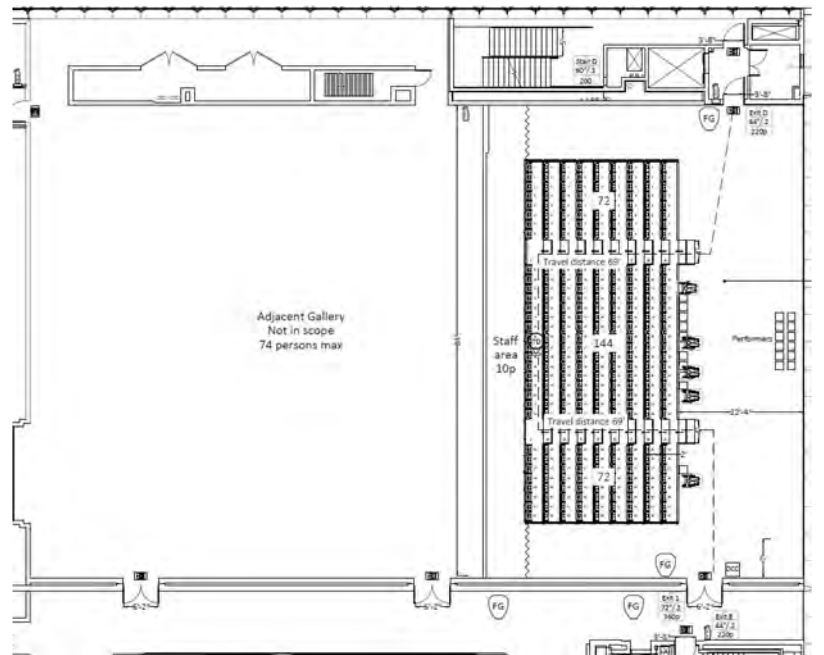
Level 4 Gallery and the Overlook.



The Overlook with table seating for 170.



Level 4 Gallery with custom breakouts and the Overlook with table seating and presentation for 105.



The Overlook's bleacher-style seating for 288.

SPACES

The Tisch Skylights



The Shed's top-floor event space opens to views of the city through two expansive skylights and north- and south-facing windows. The space can be partitioned with an existing air wall, and the windows and skylights are fitted with blackout options for daytime audio visual needs. This space can transform for dinners, press events, conferences, and personal receptions.

Dimensions: 99 x 99'
Ceiling Height: 10'
Area: 9,503 SF
Reception: 600
Seated Dinner: 450



Client meeting in The Tisch Skylights.



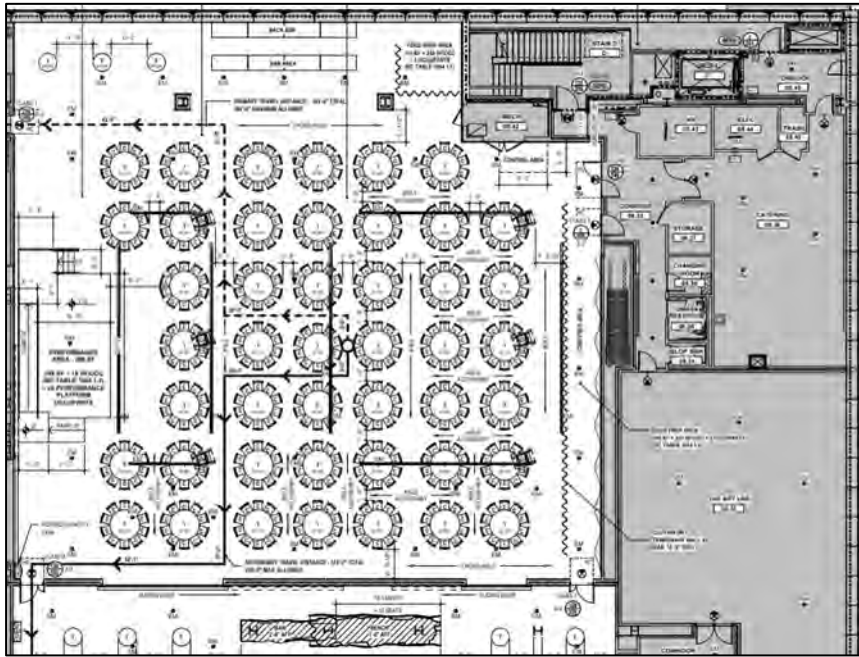
Client lounge in The Tisch Skylights.



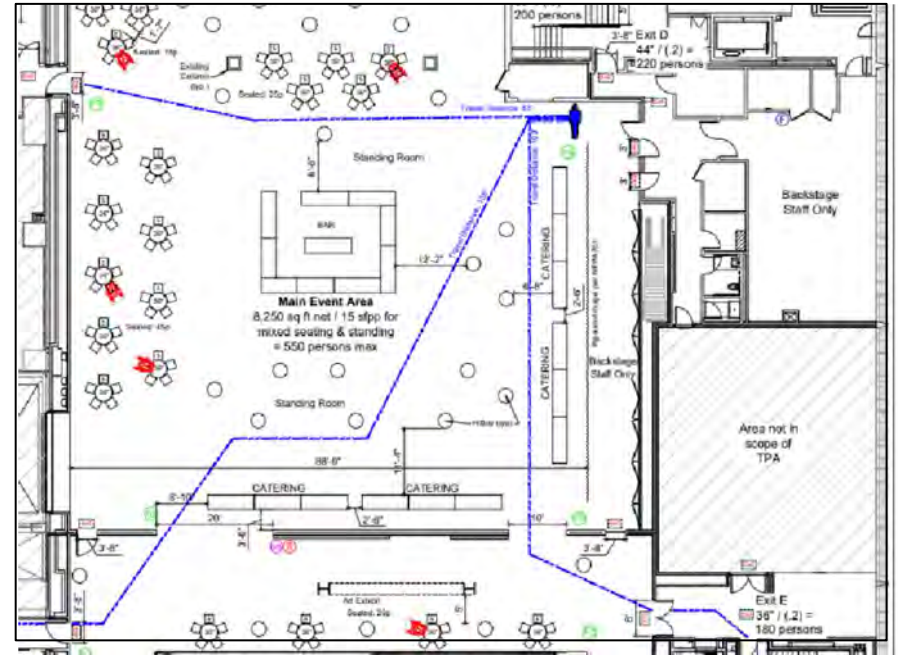
Event showcase in The Tisch Skylights. Photo: Roxxe Ireland.



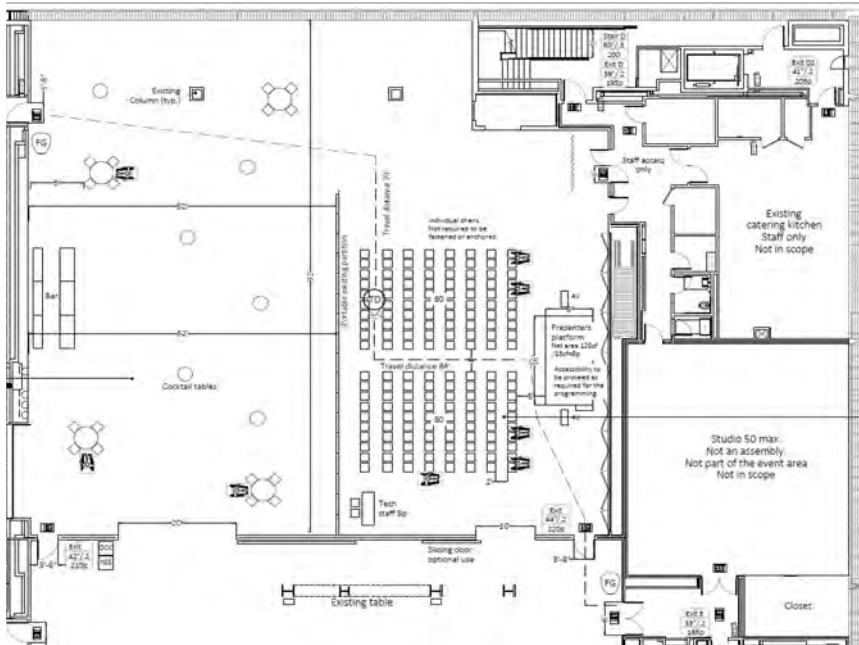
A seated dinner in The Tisch Skylights. Photo: Scott Rudd Events.



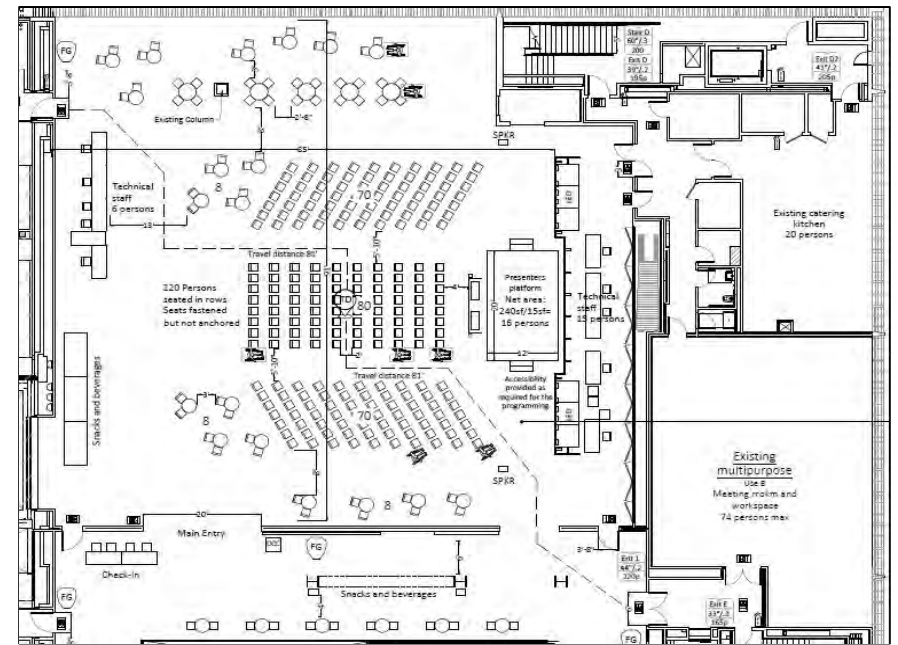
The Tisch Skylights table seating for 450.



The Tisch Skylights mixed seating and standing for 550.



The Tisch Skylights seating for 160 and cocktails for 200.



The Tisch Skylights seated presentation for 300.

SPACES

The Dan Doctoroff Lobby



The Dan Doctoroff Lobby is a welcoming space that opens to guests as they arrive at the street-level entrance on West 30th Street. It features a large glass skylight that allows guests to peer up to the High Line above and is adjacent to Union Square Hospitality Group's **Cedric's at The Shed**.

Dimensions: 118 x 68'

Ceiling Height: 10'

Area: 7,317 SF

Capacity: 450

Notes: Full Lobby (includes Cedric's at The Shed)



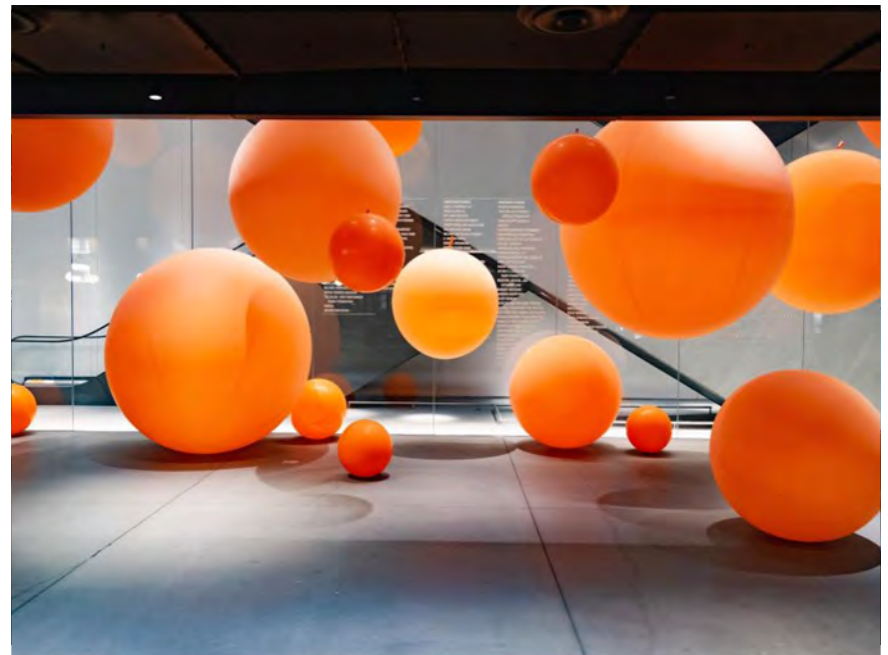
The Dan Doctoroff Lobby. Photo: Mark Wickens for the *New York Times*.



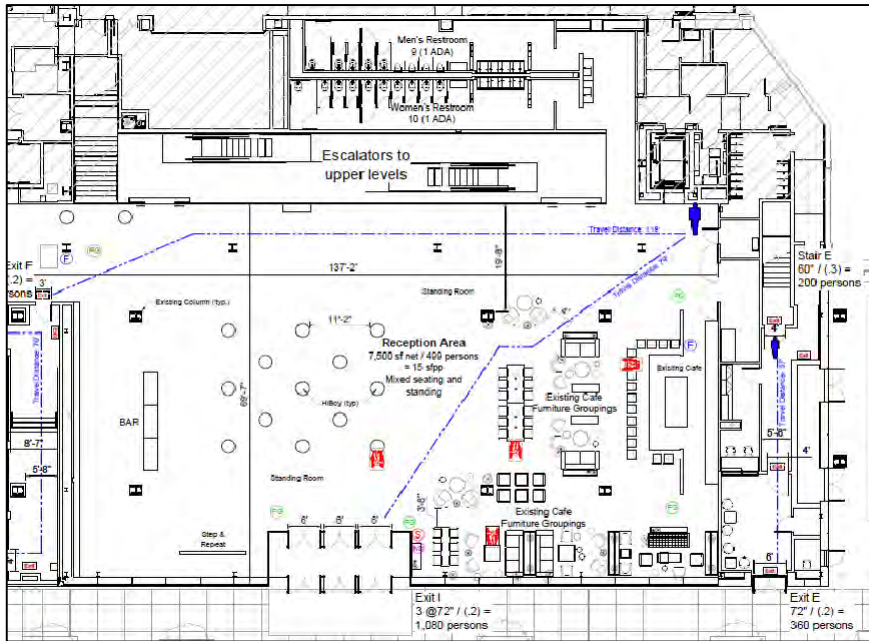
The Dan Doctoroff Lobby. Photo: Madison McGaw/BFA.com.



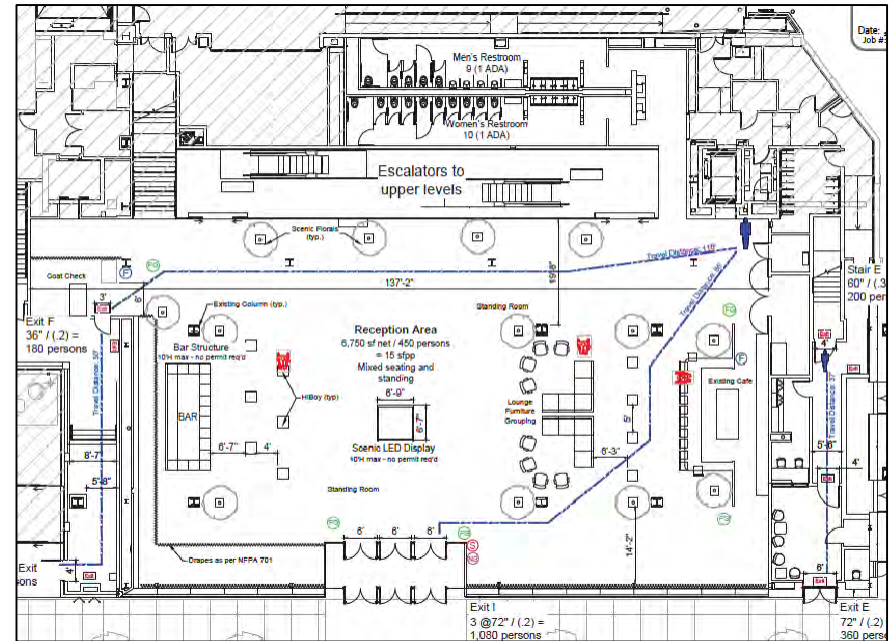
The Dan Doctoroff Lobby. Photo: Ryan Muir.



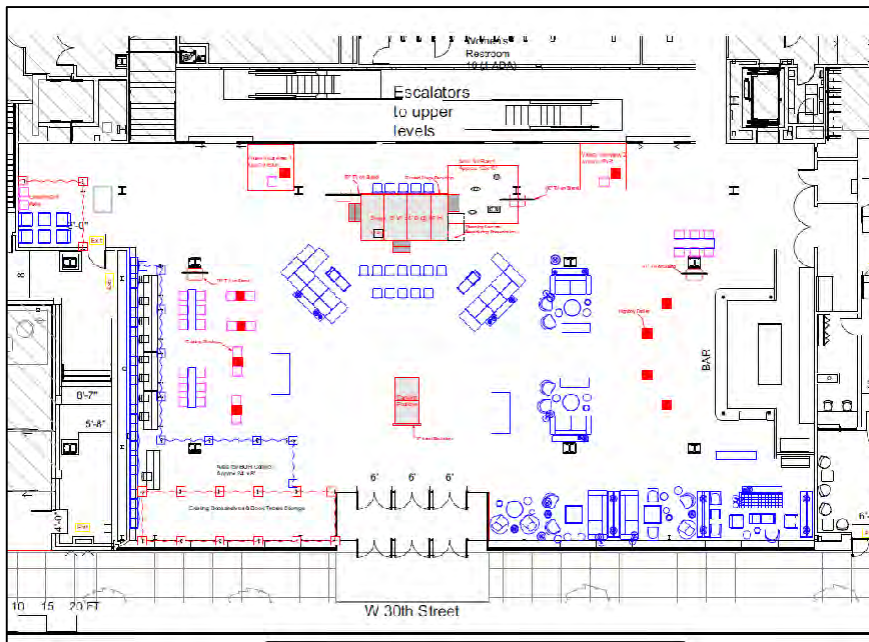
Opening night of Arinzé Kene's play *Misty* in The Dan Doctoroff Lobby.
Photo: Julie Skarratt Photography Inc.



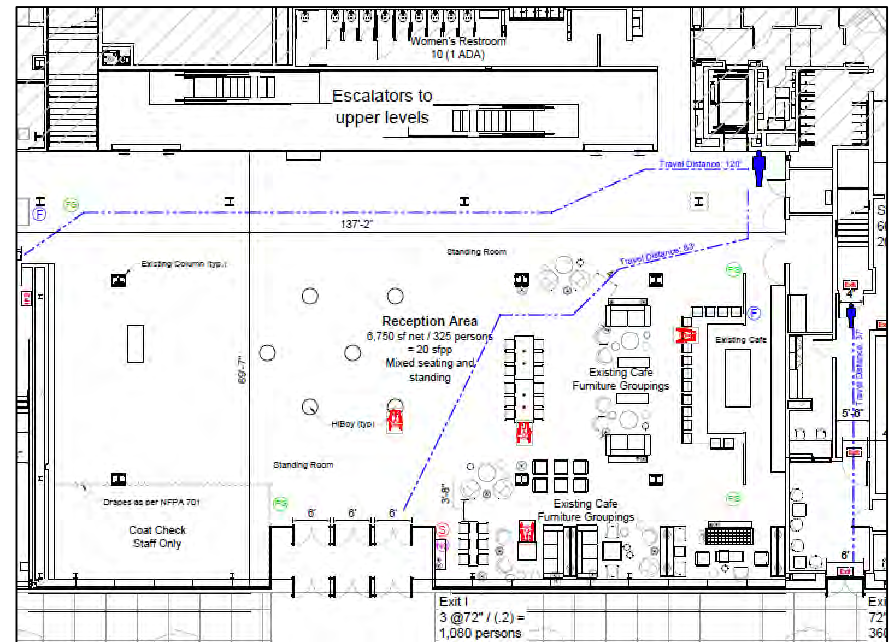
The Dan Doctoroff Lobby set for mixed seating and standing.



The Dan Doctoroff Lobby set for mixed seating and standing.



The Dan Doctoroff Lobby set for mixed seating, standing, and a stage.



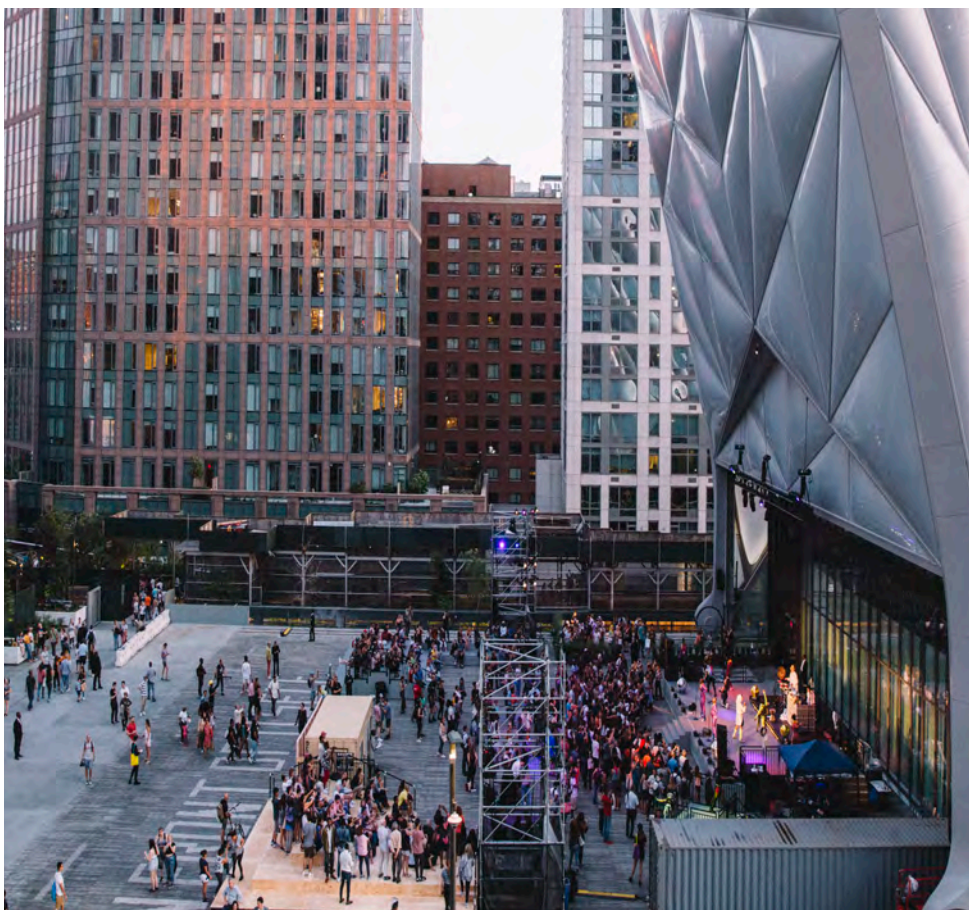
The Dan Doctoroff Lobby set for mixed seating and standing.

SPECIFICATIONS

SPECIFICATIONS

Corporate Membership

Corporate Membership is the first step to entertaining at The Shed. Corporate Members receive a suite of year-round benefits.*



The Illustrious Blacks performing *A Union of Kings* during Open Call on The Shed's Plaza, August 9, 2019. Photo: Noemie Tshinanga.

\$5,000 LEVEL | CORPORATE MOVER

- **Entertaining** benefit in The Tisch Skylights**
- **Two** transferrable corporate member cards
- **Special** recognition of support on theshed.org

\$10,000 LEVEL | CORPORATE BUILDER

- **Entertaining** benefits in The Tisch Skylights, The Dan Doctoroff Lobby, The Griffin Theater, and the Galleries**
- **Five** transferrable corporate member cards
- **One** privilege to schedule an after-hours or before-hours tour of an exhibition or the building for 30 guests
- **Thirty** corporate guest passes to all exhibitions throughout the year
- **Special** recognition of support on theshed.org

\$25,000 LEVEL | CORPORATE MAKER

- **Entertaining** benefits in The Tisch Skylights, The Dan Doctoroff Lobby, The Griffin Theater, the Galleries, and The McCourt**
- **Free** priority admission for all employees to gallery exhibitions
- **Ten** transferrable corporate member cards
- **Sixty** corporate guest passes to all exhibitions throughout the year
- **Twenty-five** invitations to exclusive events and viewing hours throughout the year
- **Special** recognition of support on theshed.org

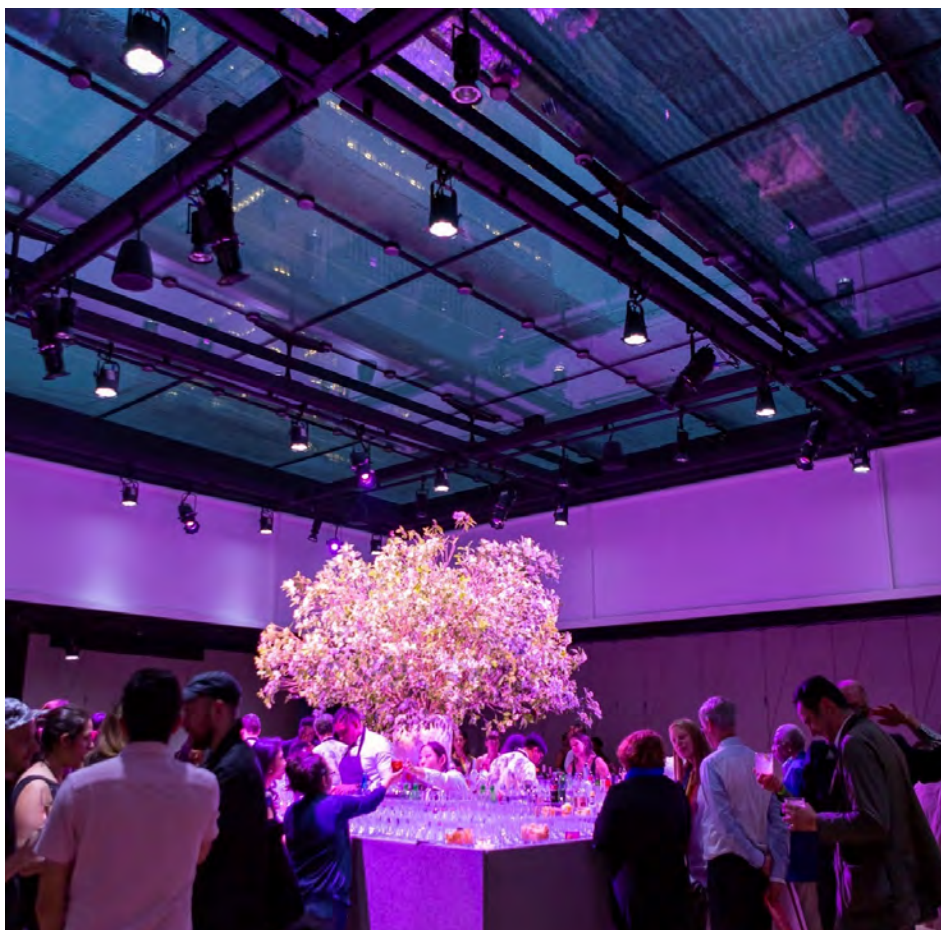
*Corporate Membership fees are waived for nonprofits.

**Entertaining benefits are subject to rental fees and all direct costs.

SPECIFICATIONS

Rental Rates

Our institutional commitment to access and flexibility is at the core of our rental program. Please email rentals@theshed.org to learn more about pricing and entertaining at The Shed. Please note that pricing fees are subject to change.



A Shed after-party in The Tisch Skylights. Photo: Scott Rudd Events.

Corporate Rates

The McCourt	\$90,000
The Griffin Theater	\$40,000
Level 2 Gallery	\$40,000
Level 4 Gallery	\$35,000
The Overlook	\$25,000**
The Tisch Skylights	\$30,000
The Dan Doctoroff Lobby	\$25,000**

Nonprofit Rates*

The McCourt	\$65,000
The Griffin Theater	\$35,000
Level 2 Gallery	\$35,000
Level 4 Gallery	\$30,000
The Overlook	\$20,000**
The Tisch Skylights	\$25,000
The Dan Doctoroff Lobby	\$20,000**

Additional Required Fees

Cleaning Deposit	\$10,000 (refundable)
Security & Operations	Based on event guest count
Local 1 Union Labor	Based on scope of the event

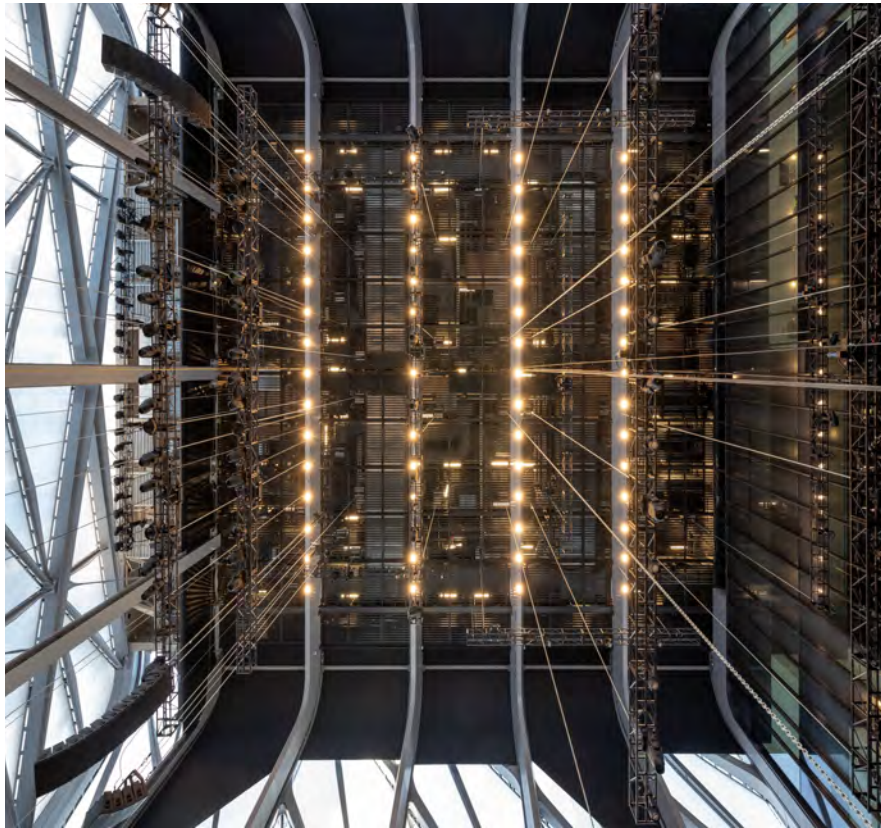
*Must provide a current 501c3 to receive this rate

**\$10,000 when combined with other spaces in the building

SPECIFICATIONS

Production & Staffing

Our team is here to help you produce a spectacular event. We hold walk-throughs for each event to determine unique production and front-of-house needs so you can reliably plan a seamless experience. All Shed Visitor Experience team staffing, maintenance staffing, and basic facility security expenses are included in our security and operations fee, which is calculated based on your guest count.



The McCourt's lighting grid seen from the floor. Photo: Timothy Schenck.

Equipment

Each space comes with its own unique inventory of production equipment, included in the rental fee. To review all available technical options, please click [here](#).

Customer Service & Box Office

The Shed utilizes the ticketing software Tessitura and has a union box office. Box office set-up and standard staffing can be added on to your venue agreement for ticketed events only. The daily rate is not inclusive of ticketing handling fees, consignment fees, credit card charges, or any fees associated with late requests or expedited service requests. Please note that we do require renters to use The Shed's box office for all ticketing to ensure the best customer service for your patrons.

Production

The Shed is a union venue represented by IATSE Local 1 stagehands. Stagehand labor is not included in the rental or security and operations fees. The stagehands complete all production work for the building (which can include any assembly, installation, and power needs within the building) and are paid at a separate hourly rate according to our collective bargaining agreement. We walk through each event individually to determine the unique production needs and then create the labor call and invoice accordingly.

SPECIFICATIONS

Information Technology

As a 21st-century cultural and arts center, The Shed is dedicated to providing state-of-the-art connectivity and virtual advancement to our artists, partners, and community. We can provide a variety of connectivity options for special events; some are available without additional configuration, while others may require coordination and special set-up. Alternatives and logistics can be discussed in more detail with The Shed's Event Operations Manager.



Simon Fujiwara's work *Empathy I*, 2018 in the exhibition *Manual Override*. Photo: Dan Bradica.

Digital Signage Take-over

The Shed's digital signage system (DSS) can be easily "taken over" by external content. Those who choose to entertain at The Shed can review the Digital Signage Guide [here](#) for details. Assets must be submitted five business days in advance of the event so our technology team can verify that all assets are correctly formatted.

Please note that custom assets cannot be displayed in public spaces while The Shed is open to the public. Custom assets can only be displayed when The Shed is closed to the public.

Internet Access

Both Wi-Fi and a hardwired internet connection are available with bandwidth up to 1Gbps. Additional bandwidth may be provided on request.

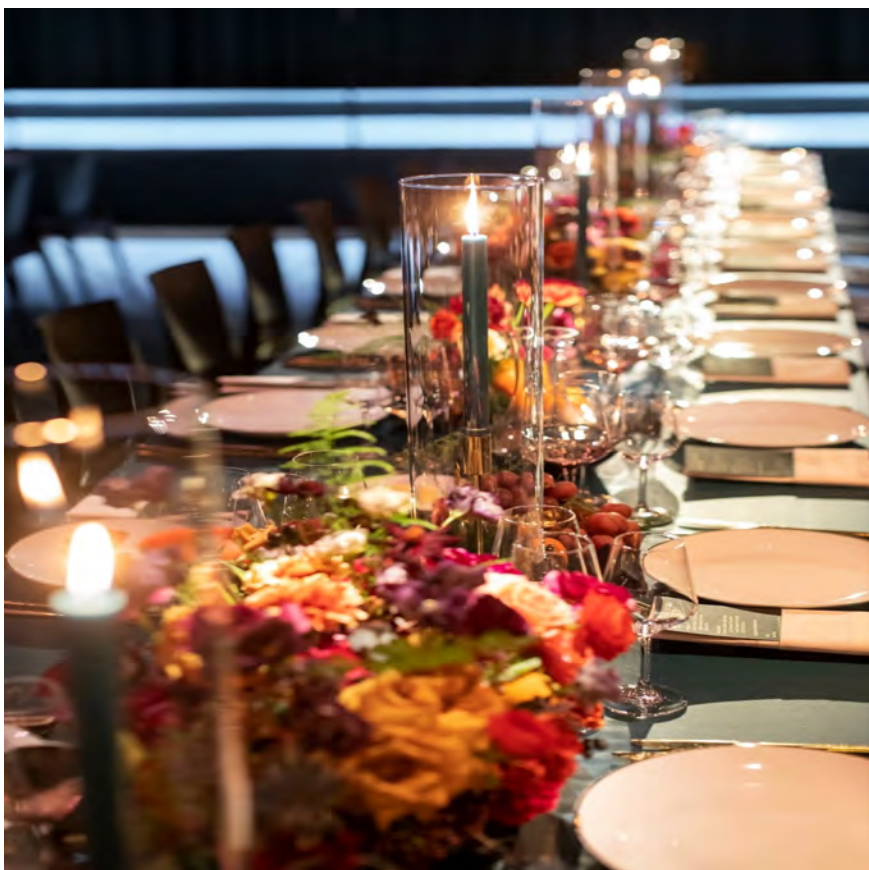
Special Requests

The Shed's Technology team can additionally provide other custom solutions and support for events. These include custom Wi-Fi networks, more complex wired network implementation, custom digital signage content (other than that defined by the Digital Signage Guide), live streaming, and broadcasting.

SPECIFICATIONS

Catering

Union Square Events, a New York City event catering company from Danny Meyer's Union Square Hospitality Group, is the exclusive caterer for The Shed. Union Square Hospitality Group has partnered with The Shed to create a sense of continuity and collaboration between The Shed's programming and hospitality services.



The Shed's 2019 Fall Gala in The Tisch Skylights. Photo: Scott Rudd Events.

General Information

While both Shed and Union Square Events staff commit to providing a seamless event experience, catering costs and details are coordinated directly with the Union Square Events team.*

Union Square Events team members dedicate themselves to events from start to finish, whether it's making rental recommendations or drawing service floor plans. Their event expertise, exceptional menus, and extensive knowledge of the building make any event at The Shed feel unique and inspired.

Shed Catering Policies

- All alcohol must be purchased through Union Square Events.
- Donated product is subject to Shed approval. If approved, the licensee is responsible for the removal of any excess product or refuse associated with the donation.
- Catering BOH rentals are exclusive to Party Rental, LTD. FOH rentals are not subject to any exclusive vendors but require Shed approval.

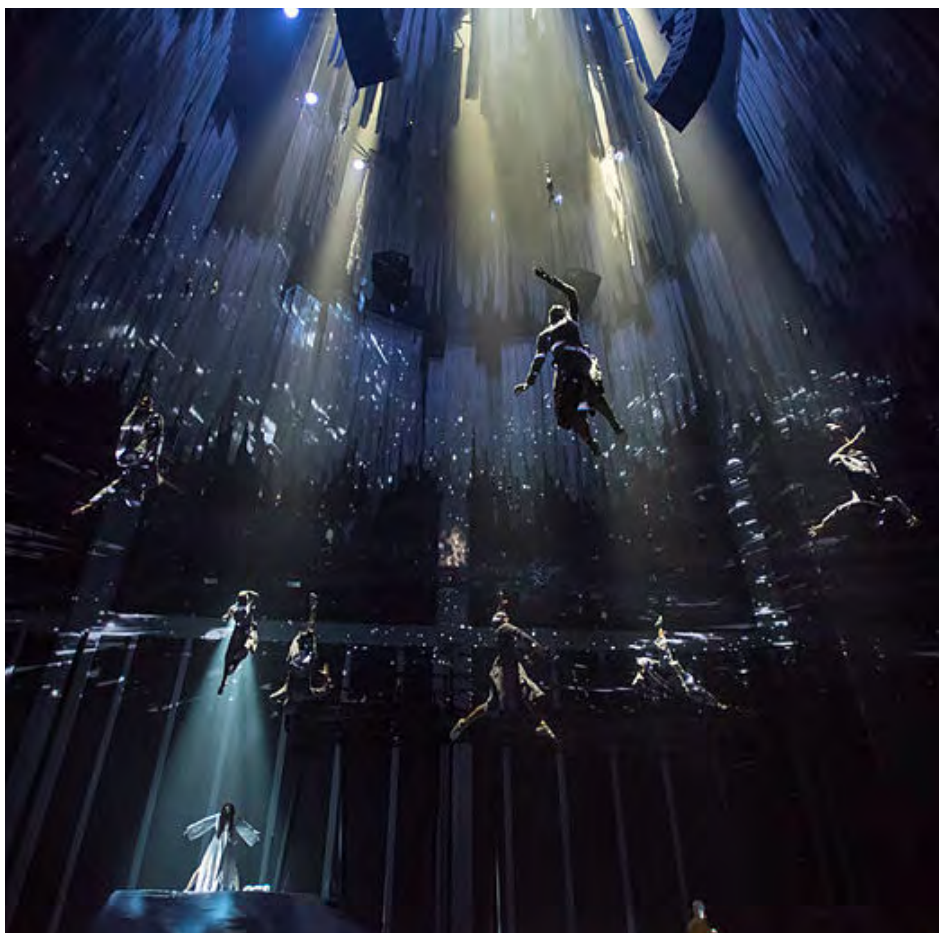
Contact

To learn more about Union Square Events and their offerings, please make an inquiry [here](#) or email theshed@unionsquareevents.com.

*Catering estimates do not include furniture and equipment rentals coordinated by Union Square Events.

CONTACT

Partnerships & Events



Dragon Spring Phoenix Rise in The McCourt. Photo: Stephanie Berger

VENUE SALES & EVENTS

For more information about The Shed's rental program and partnership opportunities, please email rentals@theshed.org.

Business Development Team

Gina Dyches, Director of Strategic Partnerships, Venue Sales
Rachel Skontrianos, Associate Director of Venue Sales
Sam Hollands, Event Operations Manager
Udeme Asuquo, Venue Sales Assistant

CORPORATE MEMBERSHIP

For more information about Corporate Membership, or the higher levels of The Shed's Corporate Council and sponsorship opportunities, please email corporate.support@theshed.org.

Corporate Partnerships Team

Eunice Liriano, Director of Corporate Partnerships
Monet Takeda, Corporate Partnerships Associate