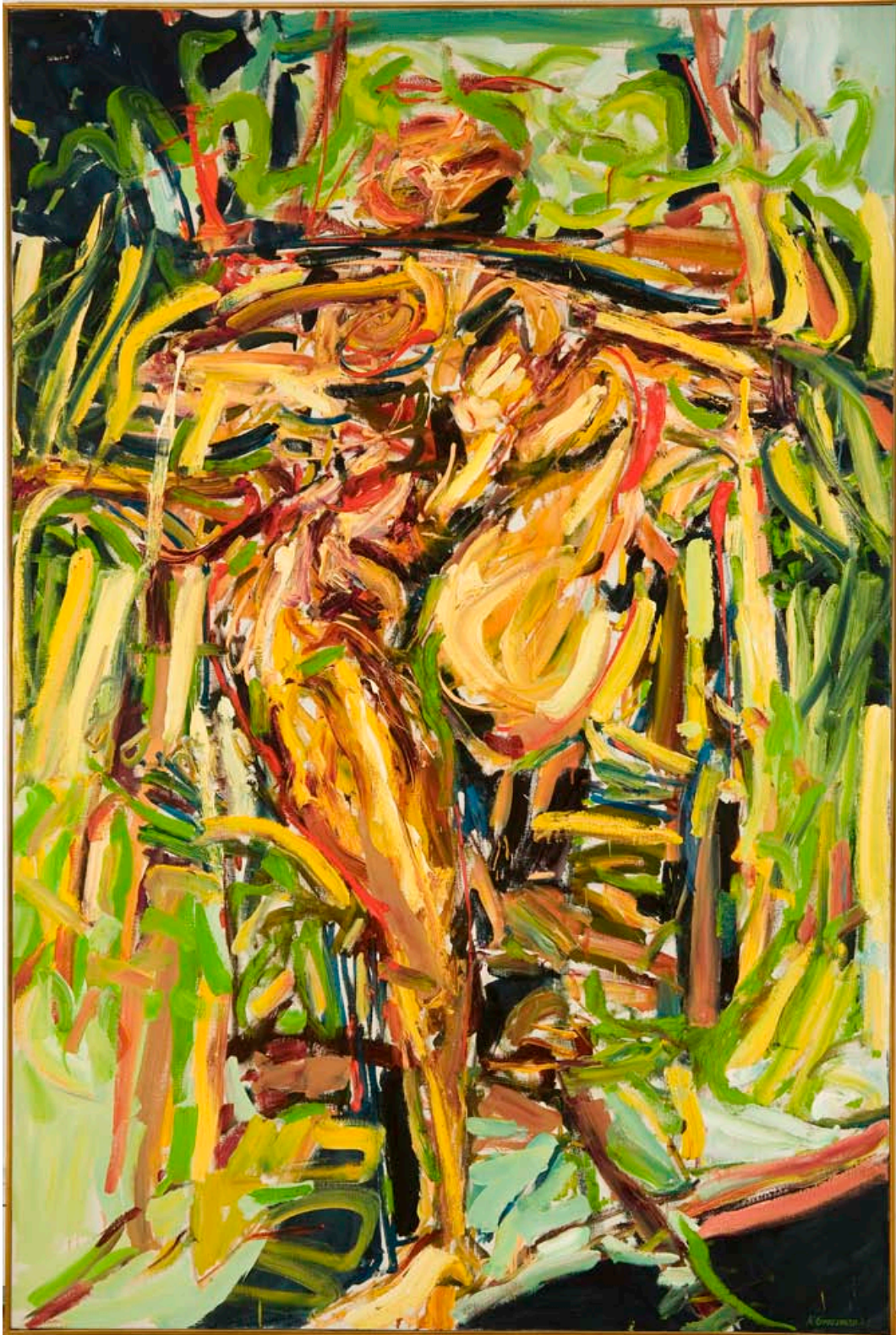


NANCY GROSSMAN

TOUGH

LIFE

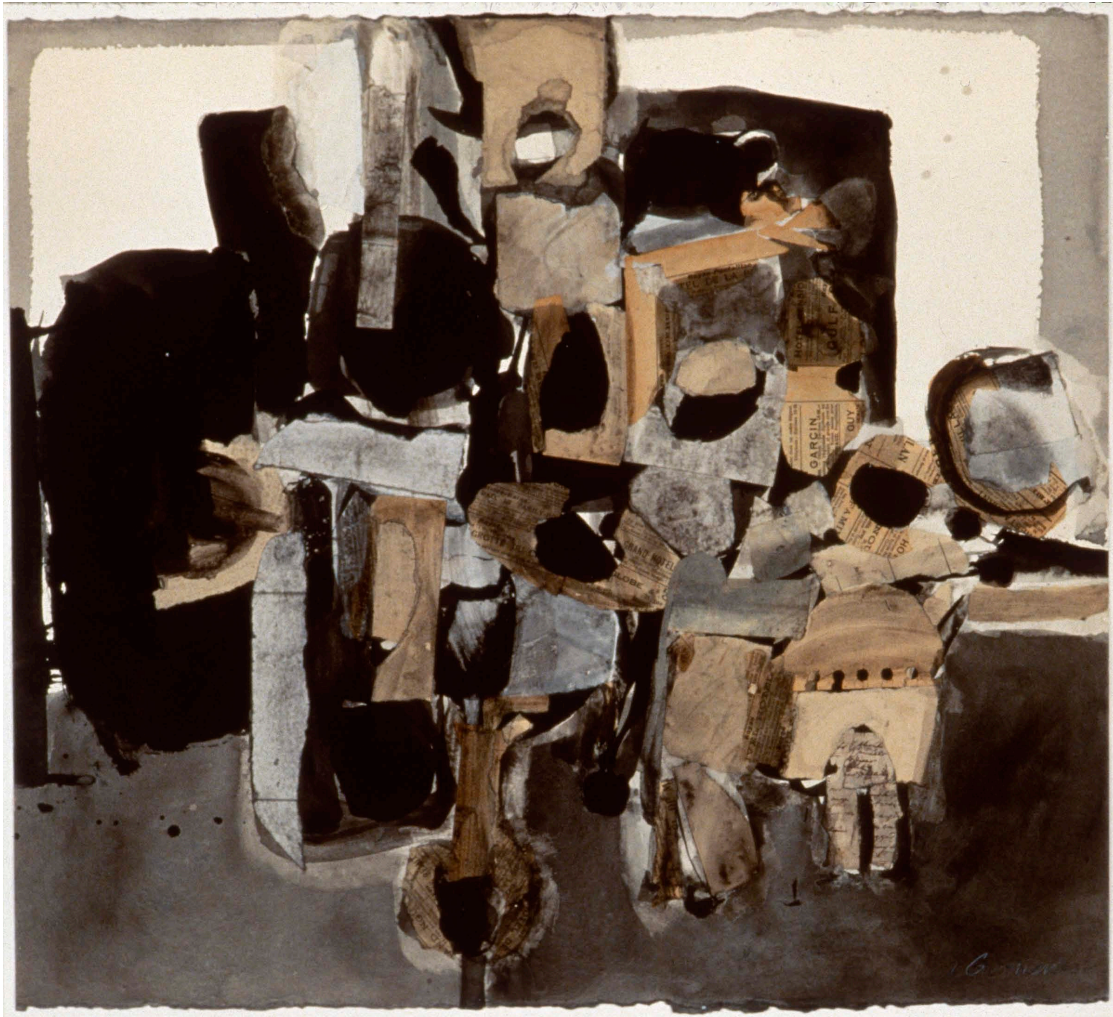
DIARY



Woman Emerging, 1962

Oil on canvas

72 x 42 inches



Cubist Club at St. Mark's, 1963

Collage on paper mounted on board

20 ¼ x 22 ¼ inches



Olive Grove, 1963

Mixed media collage on paper

9 x 11 ½ inches



Corridor, 1977

Fabric, leather, paint, and charcoal on canvas
72 x 48 x 2 inches



Black Landscape, 1963

Mixed media paper with watercolor collage

22 ½ x 22 ¾ inches

Michael Rosenfeld Gallery LLC, New York



Totem III, 1966-1967

Mixed media

74 ½ x 17 x 11 ¼ inches

Totem I, 1966-1967

Mixed media

73 ¼ x 10 ½ x 9 inches

Totem II, 1966-1967

Mixed media

77 x 10 ¼ x 11 ½ inches



Brown and Black, 1965

Leather, metal, rubber, wood, and paint on
canvas mounted on plywood
73 ½ x 70 x 9 ½ inches



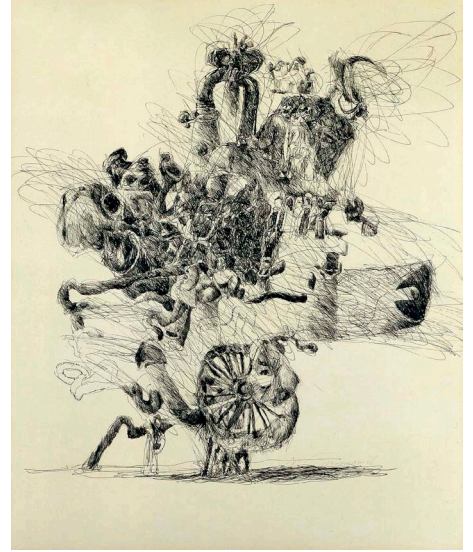
Hitchcock, 1965

Leather, metal, rubber, wood, and paint on
canvas mounted on plywood
73 5/8 x 73 5/8 x 7 inches



Car Horn, 1965

Leather, metal, rubber, wood, and paint on
canvas mounted on plywood
73 ½ x 49 x 11 inches



Select drawings, 1965-1967
 Pen and ink on paper
 Each approximately 16 ¾ x 13 ¾ inches



Bride, 1965

Mixed media

22 ½ inches diameter



Ali Stoker, 1966-1967

Leather and rubber on canvas

37 ½ x 49 ½ x 8 inches



Male Figure Sculpture, 1971

Wood, leather, and metal

68 inches high

Collection of the Israel Museum, Jerusalem



Untitled, 1968

Wood, leather, lacquer, epoxy, and metal
20 x 7 x 9 ½ inches



T.U.F., 1969

Wood, leather, and metal

21 x 8 x 7 ½ inches

The Columbus Museum, Columbus, Georgia

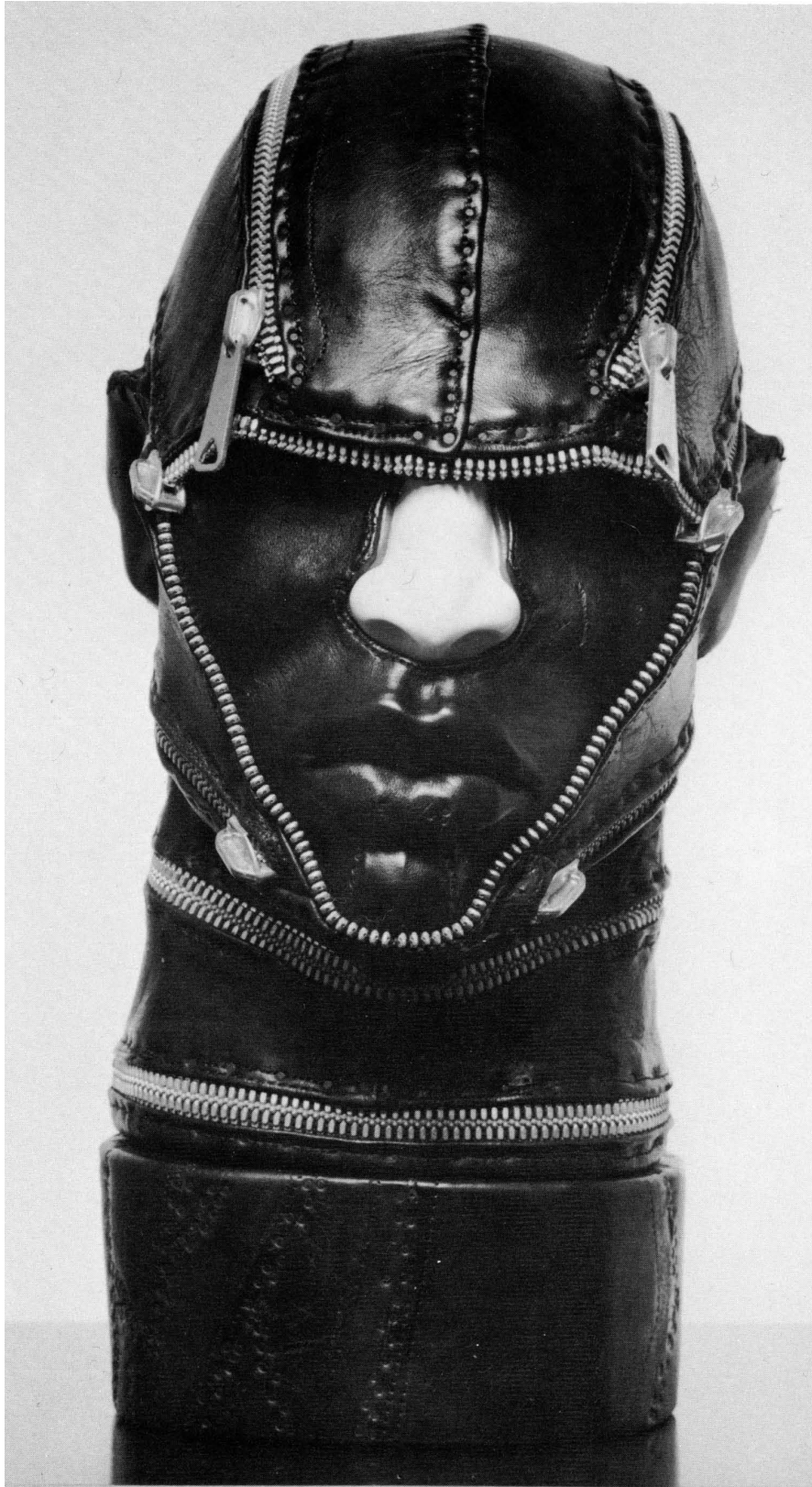


House, 1969-1970

Wood, leather, and lacquer

16 ¼ x 6 ¾ x 8 inches

Virginia Museum of Fine Arts,
Gift of Sydney and Frances Lewis



A.F.F., 1971

Wood, leather, porcelain and metal

16 x 7 ½ x 9 ½ inches



Haifisch, 1971

Wood, leather, porcelain, and metal

16 x 8 x 10 inches

Michael Rosenfeld Gallery LLC, New York



Kazakh, 1971

Wood, leather, and metal

16 x 8 x 10



T.O.K., 1969-1970

Wood, leather, porcelain, and metal

22 ¼ x 7 ½ x 9 inches

Michael Rosenfeld Gallery LLC, New York



Brush, 1973

Wood, leather, epoxy, and brushes

17 ¼ x 11 ½ x 7 ½ inches

Weatherspoon Art Museum



Horn, 1973-1974

Wood, leather, horn, and metal

19 ½ x 7 x 13 inches

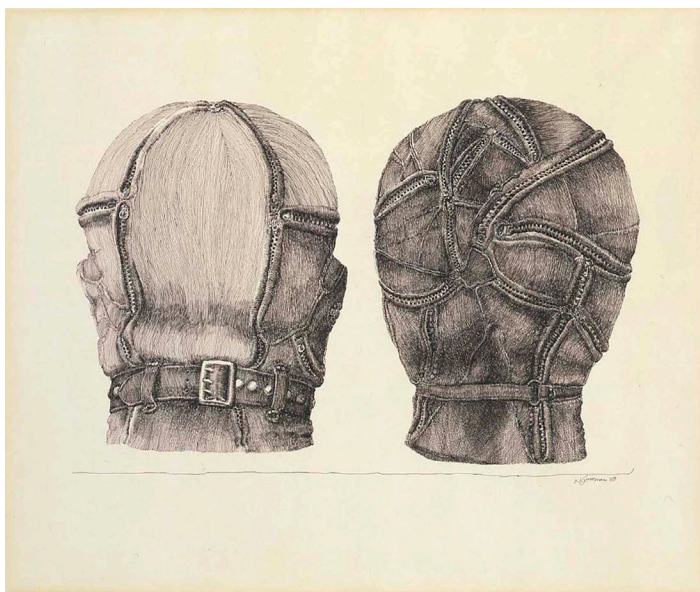


Gerent, 1971

Collage on paper

25 ¼ x 20 ¼ inches

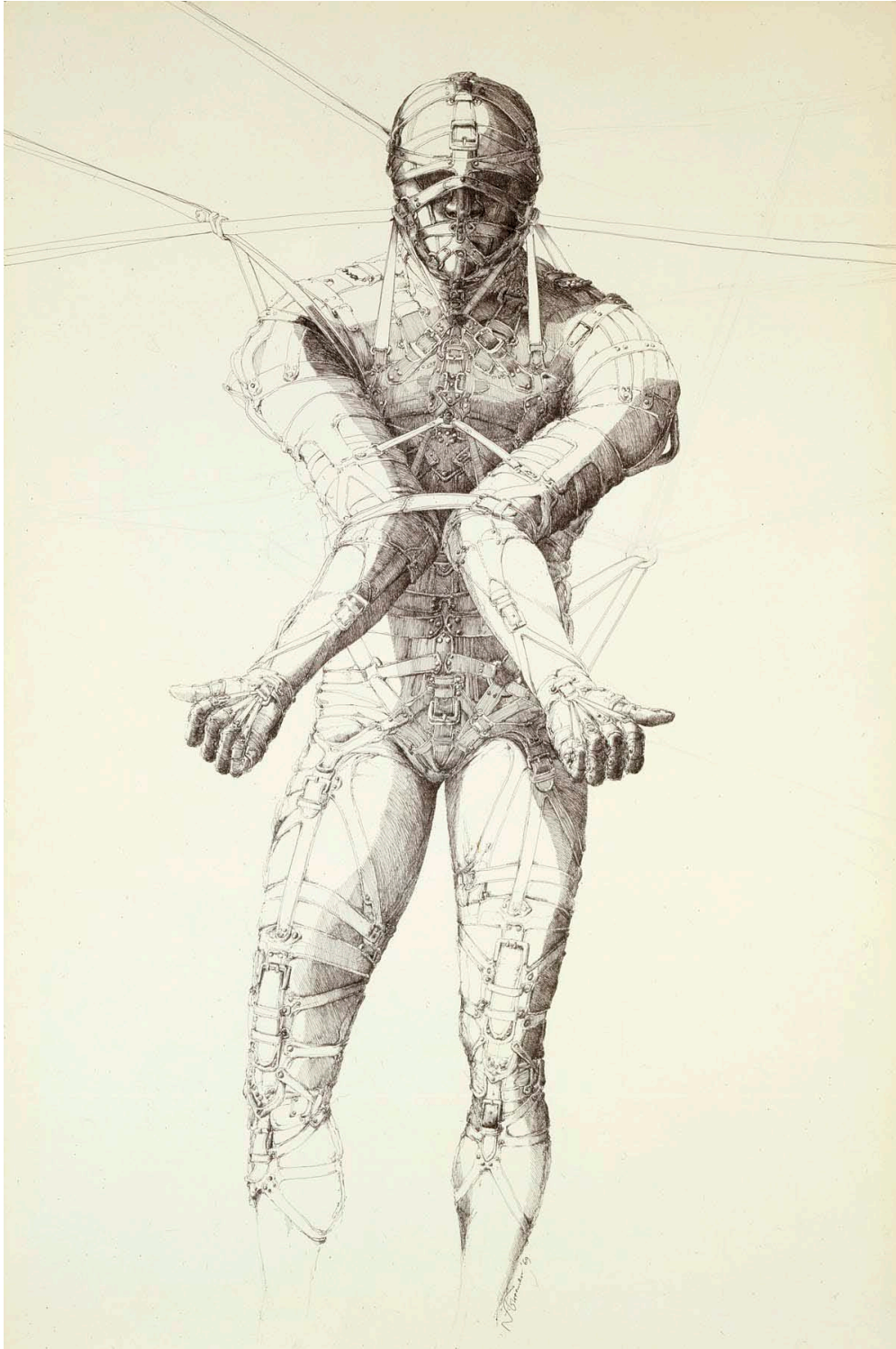
Michael Rosenfeld Gallery LLC, New York



Double Portrait from the Back, 1968

Pen and ink on paper

13 ¾ x 17 inches



Untitled, 1969

Ink and graphite on cardstock
35 x 23 inches

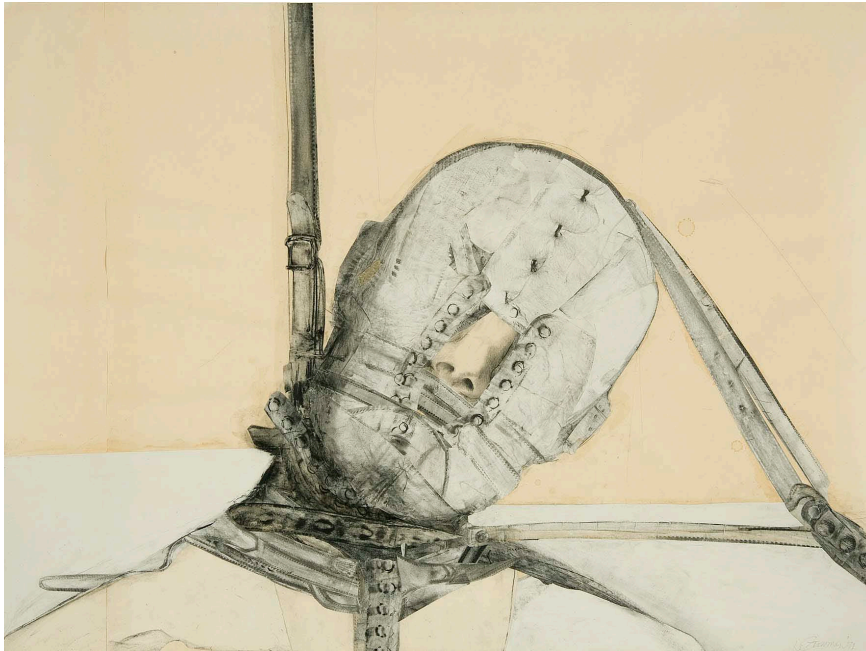


Figure, 1970

Pen and ink on paper

46 1/16 x 34 7/16 inches

Princeton University Art Museum

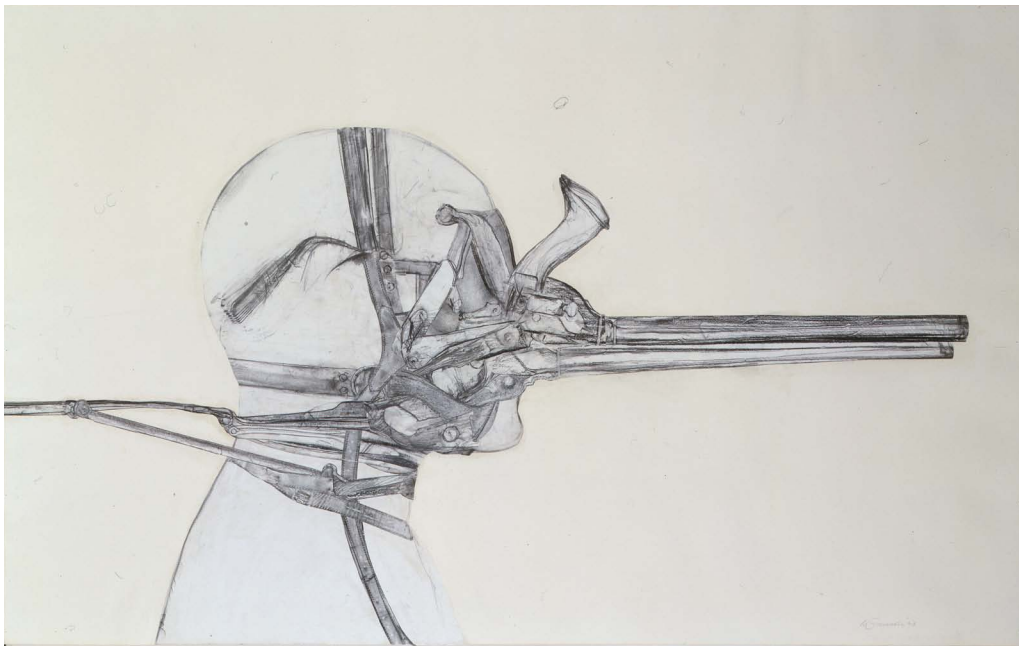


Sonta, 1971

Mixed media collage with oil and graphite
on paper

21 $\frac{3}{4}$ x 29 inches

Michael Roselfeld Gallery LLC, New York



Liliaceae, 1973

Graphite, lithographer's crayon, wash,
and paper collage on paper

23 $\frac{1}{2}$ x 38 inches

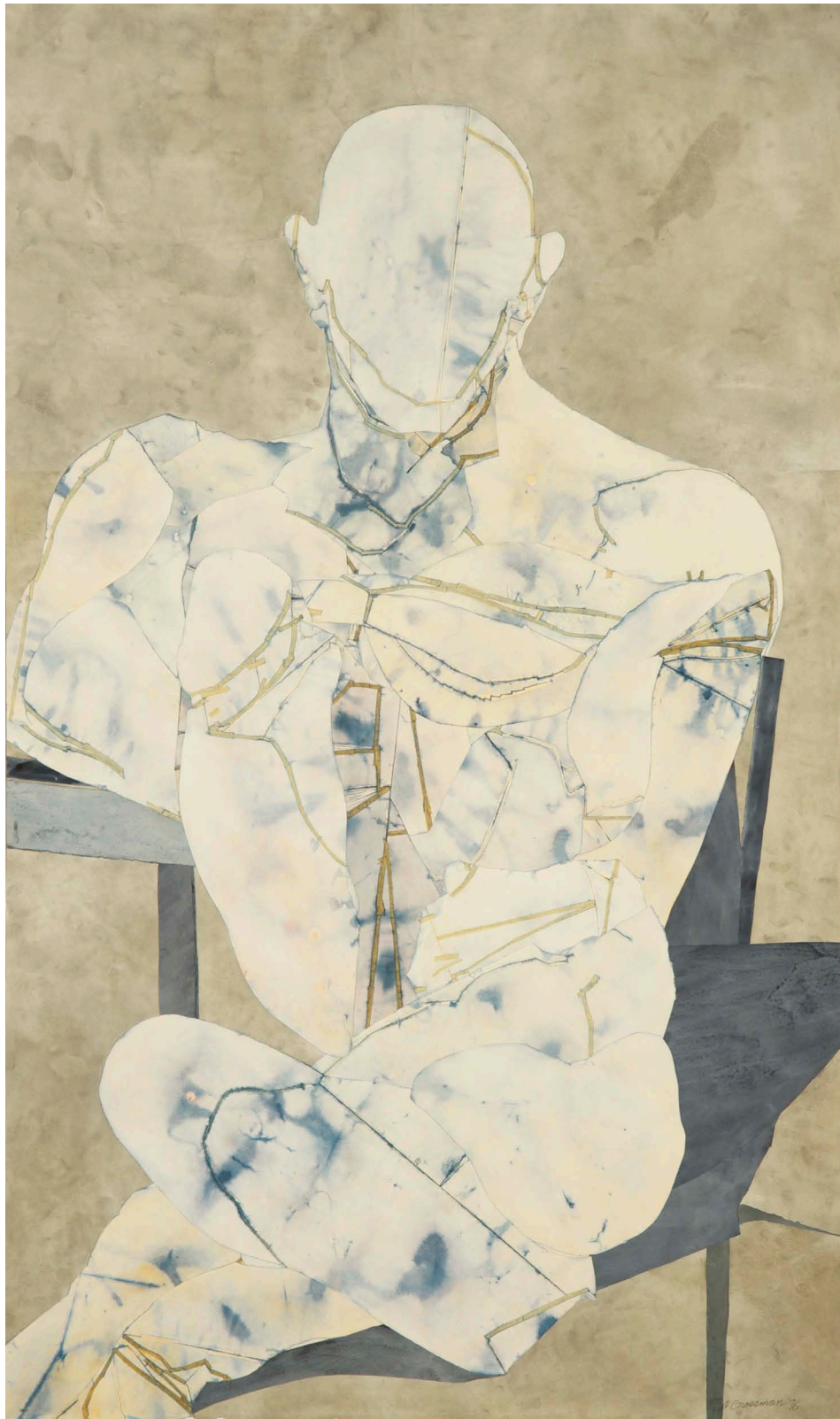


Collage pastel #11, 1976

Collage and pastel on paper

26 x 20 inches

Michael Rosenfeld Gallery LLC, New York



Cloud Figure Seated, 1976

Collage with watercolor on board
60 3/8 x 35 7/8 inches



Gun Figure, 1974

Collage with watercolor on board

48 x 42 inches

Michael Rosenfeld Gallery LLC, New York



Suet, 1977-1980

Wood, leather, and mixed media

16 x 9 x 11 inches

New Orleans Museum of Art



N.S.G., 1977-1980

Wood leather, zippers, seashell, button,
washer, and lacquer

16 x 9 ¼ x 10 ½ inches



Cob I, 1980

Wood, leather, nails, a lacquered paint, horn,
and lead

17 $\frac{3}{4}$ x 9 $\frac{1}{2}$ x 10 $\frac{1}{2}$ inches

Smithsonian American Art Museum



H.U.F., 1980

Wood, leather, porcelain, and hardware
16 ¾ x 8 1/8 x 9 5/8 inches

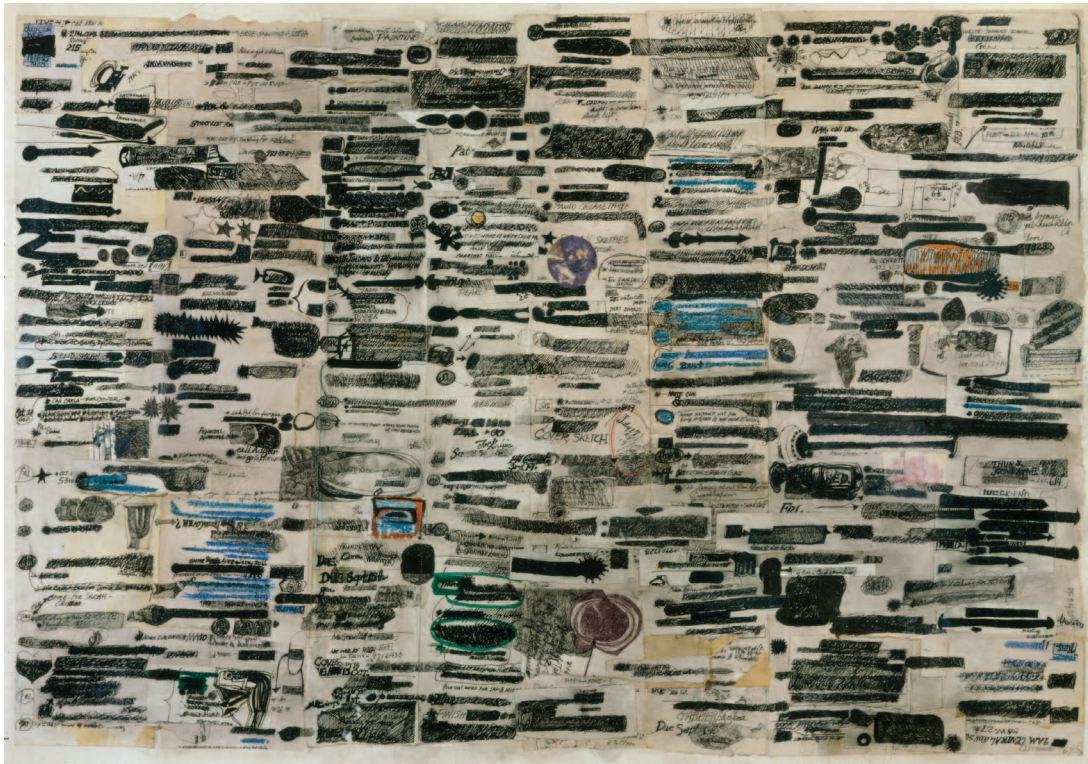


Cob II, 1980

Wood, leather, horns, lacquer, and lead

33 inches high

The Metropolitan Museum of Art, New York



Tough Life Diary, 1973

Ink, pastel, and collage on paper

22 ¼ x 29 5/8 inches

Michael Rosenfeld Gallery LLC, New York



Oval Diary, 1973

Collage drawing on paper mounted on board

16 ¼ x 30 ½ inches



Red Enna Diary, 1987

Mixed media collage on board

36 x 46 ½ inches



***Snake Still-Life with Swimming
Pool, 1993***

Mixed media collage on Masonite

35 ½ x 44 5/8 inches

Michael Rosenfeld Gallery LLC, New York

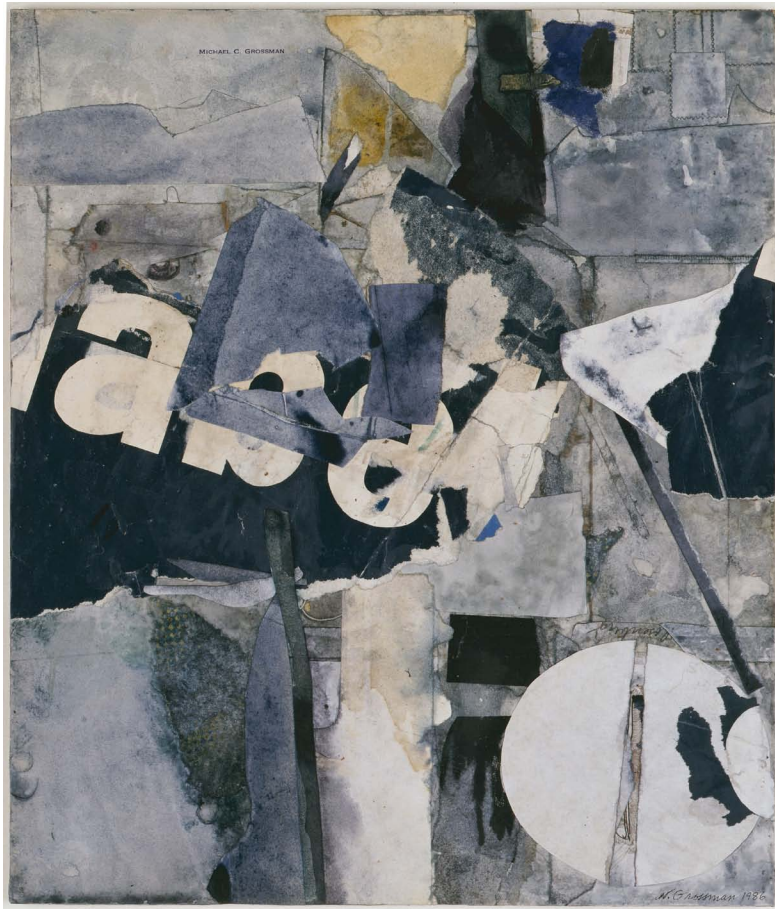


***Exploding Tongues - Untitled
Scape, 1993***

Mixed media collage on Masonite

35 5/8 x 47 5/8 inches

Michael Rosenfeld Gallery LLC, New York



Albert Ryder in New York, 1986

Mixed media collage on Masonite

14 x 12 inches

Michael Rosenfeld Gallery LLC, New York



The Other Marilyn, 1987

Mixed media collage on Masonite

11 ¾ x 13 ¾ inches

Michael Rosenfeld Gallery LLC, New York



Light Is Faster than Sound, 1987-1988

Mixed media collage on Masonite

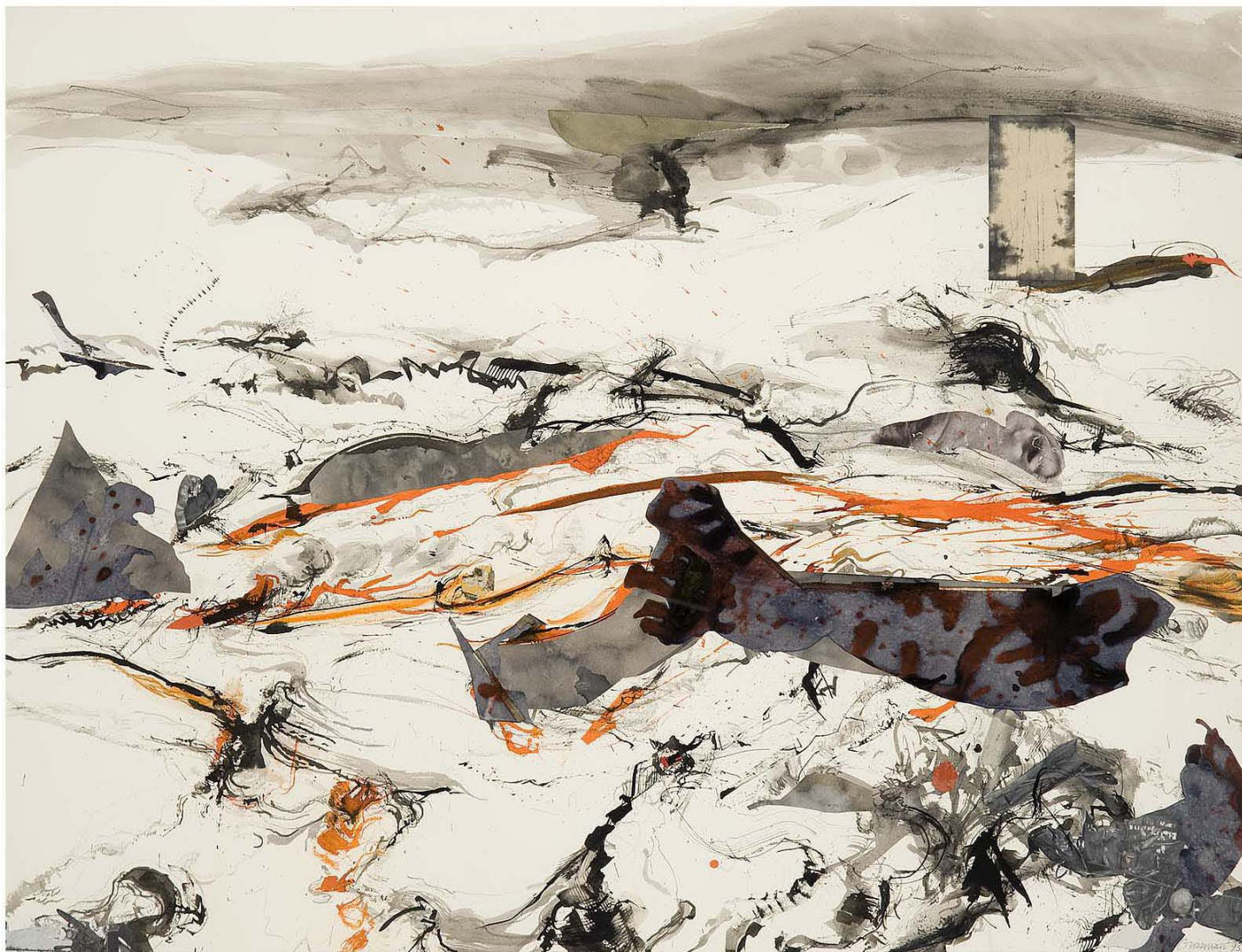
36 x 48 inches

Michael Rosenfeld Gallery LLC, New York



Bayamon, 1982

Mixed media collage with watercolor
on Masonite
36 x 48 inches



Birth-Death Dream, 1993

Mixed media collage drawing
38 x 50 inches



Succot, 1983

Metal, wood, leather, bristle, and rubber
123 x 45 x 40 inches



Opus Volcanus, 1994

Leather, wood, metal, rubber, acrylic
50 x 80 x 7 inches



***Process Piece: Collage Patterns
from Works 1982-1992, 1994***

Mixed media collage on wood board

48 x 61 x 1 inches

Michael Rosenfeld Gallery LLC, New York