



US
Material Handler | F-Series

350 / 355 MHL



215 hp



max. 90,168 lbs



max. 52'6"



FUCHS[®]

A TEREX BRAND

TECHNICAL DATA

OPERATING WEIGHT WITHOUT ATTACHMENTS

| | |
|----------|-------------------|
| MHL350 F | 72,752–78,263 lbs |
| MHL355 F | 79,366–90,168 lbs |

DIESEL ENGINE

| | |
|----------------------------------|---|
| Manufacturer and model | Deutz TCD 6.1 L6 |
| Design | 6-cylinder inline |
| Control | EMR IV |
| Method of operation | 4-cycle diesel, common rail direct injection, turbocharged with intercooler, controlled exhaust gas recirculation, diesel particulate filter with continuous regeneration and SCR catalytic converter |
| Engine power | 215 hp (160kW) |
| Rated speed | 2,000 rpm |
| Displacement | 372 cui |
| Cooling system | Combi-cooler (coolant/ charge air) with fan speed control system; optional reversing function |
| Exhaust emission standard | EPA Tier 4 final / EU stage IV |
| Fuel tank | 83 gal Diesel |
| DEF / Urea tank | 8.5 gal AdBlue |

ELECTRICAL SYSTEM

| | |
|---------------------------|---|
| Generator | 28V / 100A |
| Operating voltage | 24V |
| Battery | 2 × 12V / 110Ah / 750A (in accordance with EN) |
| Lighting system | 2 × H3 headlamps, turn indicators and tail lights |
| Optional equipment | 13 kW or 20 kW DC generator with controls and insulation monitoring, driven by V-belt direct from diesel engine |

TRANSMISSION

Hydrostatic travel drive via infinitely variable axial piston motor with directly mounted travel brake valve, two-speed manual gearshift, 4-wheel drive

| | |
|---|----------|
| Travel speed 1st gear | 3.1 mph |
| Travel speed 2nd gear | 11.2 mph |
| Gradeability | max. 39% |
| Turning radius | 28'7" |

SWING DRIVE

| | |
|----------------------------------|---|
| Slew ring | Internally geared, double-row ball turning ring |
| Drive | 3-stage planetary gear with integrated multi-disc brake |
| Uppercarriage swing speed | Infinitely variable from 0–7 rpm |
| Rotating interlock | Electrically operated |
| Max. swing torque | 59 lbf ft |

UNDERCARRIAGES

| | MHL350 F | MHL355 F |
|----------------------|---|---|
| Front axle | Planetary drive axle with integrated drum brake, rigidly mounted, max. steering angle 27° | Planetary drive axle with integrated drum brake, rigidly mounted, max. steering angle 27° |
| Rear axle | Oscillating axle with integral drum brake and selectable oscillating axle lock | Oscillating planetary drive rear axle with integrated drum brake and selectable oscillating axle lock |
| Stabilization | 4-point stabilizer system | 4-point stabilizer system |
| Tires | Solid rubber, 8-ply 12.00-20 | Solid rubber, 8-ply 12.00-24 |

BRAKING SYSTEM

| | |
|----------------------|--|
| Service brake | Hydraulic single-circuit braking system, acting on all wheels |
| Parking brake | Electrically operated disc brake on transmission acting on both front and rear axles |

HYDRAULIC SYSTEM

| | |
|---------------------------|-----------------|
| Pump delivery rate | max. 2 × 87 gpm |
| Operating pressure | 4641 / 5221 psi |
| Hydraulic oil tank | 120 gal |

OPERATOR'S CAB

| | |
|------------------------|--|
| Cab | Infinitely variable hydraulic height-adjustment with eye level up to 18.4' above ground. Flexibly mounted Sound-deadened, ample thermal panoramic glass windows, windshield with pull-down sunblind, viewing window on cab roof, sliding window in cab door, sliding door |
| Climate control | Automatic air-conditioning. Infinitely variable heating with 8-speed fan, 10 adjustable air nozzles, including 4 in the roof lining, 3 defroster nozzles |
| Operator's seat | Air-cushioned comfort-seat with integrated headrest, safety belt and lumbar support, seat heating with integrated A/C function optional. Comfortable operation with multi-purpose adjustment options for seat position, seat inclination, seat cushion placement in relation to armrests and pilot control units. Articulating armrests and joysticks |
| Monitoring | Ergonomic layout, anti-glare instrumentation. Multifunction display, automatic monitoring and recording of abnormal operating conditions (including all hydraulic oil filters, hydraulic oil temperature (cold/hot), coolant temperature and charge air temperature, diesel particulate filter load, visual and audible warning indication with shutdown of pilot controls/engine power reduction. Diagnosis of individual sensors possible via the multifunction display. Rear view camera and side view camera |
| Sound levels | Sound power level (ambience) L _{WA} 98.8 dB(A) (metered) acc. to directive 2000/14/EG L _{WA} 101 dB(A) (guaranteed) acc. to directive 2000/14/EG Sound pressure level (inside the cabin) acc. to directive ISO 6396 L _{PA} 70 dB(A) |

Certified in accordance with CE regulations

EQUIPMENT

DIESEL ENGINE

| | Standard | Option |
|--|----------|--------|
| Intercooler and coolant radiator | ● | |
| Direct electronic fuel injection/common rail | ● | |
| Advanced automatic idle incl. engine shut-off function | ● | |
| Engine preheating | | ● |
| Engine diagnostics interface | ● | |
| Temperature-dependent fan drive | ● | |

UNDERCARRIAGE

| | | |
|---|---|---|
| All-wheel drive with differential | ● | |
| Drum brakes | ● | |
| Rear axle oscillating lock | ● | |
| 2-speed powershift transmission | | ● |
| 4-point stabilizers | ● | |
| Stabilizer cylinders with integrated two-way check valves | ● | |
| Piston rod protection on stabilizer cylinders | ● | |
| Tool box | ● | |
| Special paint (customer paint work) | | ● |
| Solid rubber tires (12.00-20) with intermediate rings | ● | |
| Solid rubber tires (12.00-24) with intermediate rings (MHL355F) | ● | |

UPPERCARRIAGE

| | | |
|---|---|---|
| Separate cooling systems (combi-cooler for engine and hydraulic oil cooler) | ● | |
| Cooling system with temperature-dependent fan drive | ● | |
| Fan drive reversing function | | ● |
| Automatic central lubrication system | ● | |
| Rear view camera | ● | |
| Side view camera | ● | |
| Travel alarm | | ● |
| Electric refuelling pump | | ● |
| Lighting protection | | ● |
| Special paint (customer paint work) | | ● |

CAB

| | Standard | Option |
|---|----------|--------|
| Hydraulically adjustable cab | ● | |
| 3-layer glass with protection film | ● | |
| Sliding window in cab door | ● | |
| Glazed roof panel | ● | |
| Reinforced glass (windscreen and roof panel) | | ● |
| Roof washer system (skylight) | | ● |
| Air-cushioned operator seat with headrest, seatbelt, and lumbar support | ● | |
| Seat heating with integrated A/C function | | ● |
| Joystick steering | ● | |
| Steering column, height and tilt adjustable | | ● |
| Automatic air conditioning system | ● | |
| Independent heating system | | ● |
| Multi-function display | ● | |
| Document clip | ● | |
| Protective grilles to front and roof | | ● |
| 12V transformer | | ● |
| Radio USB & Bluetooth (EU & USA) | | ● |
| 12V socket | ● | |
| Fire extinguisher, dry powder | | ● |
| Travel alarm w/ rotating beacon | | ● |

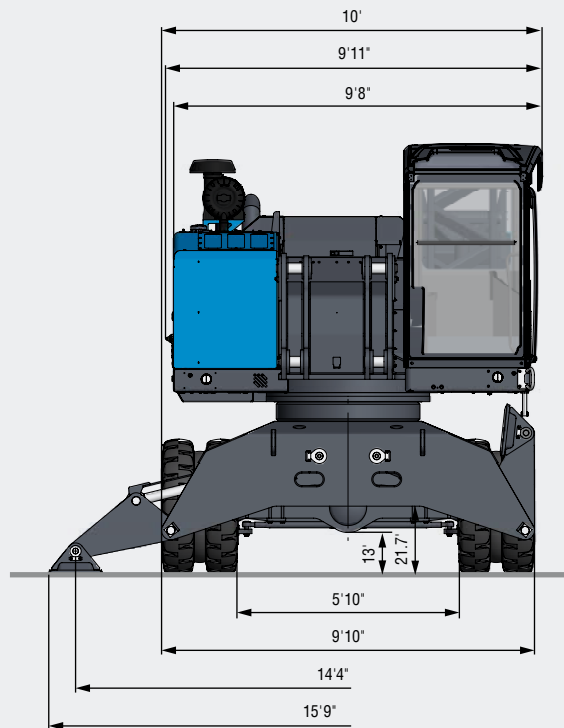
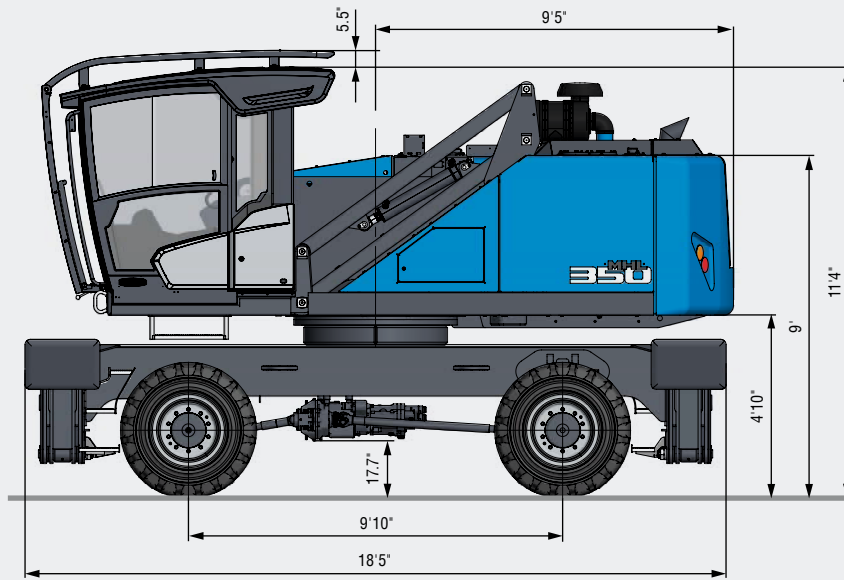
OTHER EQUIPMENT

| | | |
|--|---|---|
| 13 kW DC generator with controls | | ● |
| 20 kW DC generator with controls | | ● |
| Close proximity range limiter for dipperstick | ● | |
| Coolant and hydraulic oil level monitoring system | ● | |
| Filter system for attachments | | ● |
| Overload and working range monitoring | ● | |
| Hose rupture valve for boom cylinder | | ● |
| Hose rupture valve for stick cylinder | | ● |
| Overload warning device | | ● |
| Quick coupling on dipperstick | ● | |
| Dipperstick impact protection | | ● |
| Active cyclone prefilter (TOP AIR) | | ● |
| Hydraulic oil preheating 230 V | | ● |
| Lubrication of the grab suspension by central lubrication system | ● | |
| Light packages LED | | ● |
| LED front headlights | ● | |
| Fuchs Telematics System, incl. 2 years service | | ● |

Further optional equipment available on request!

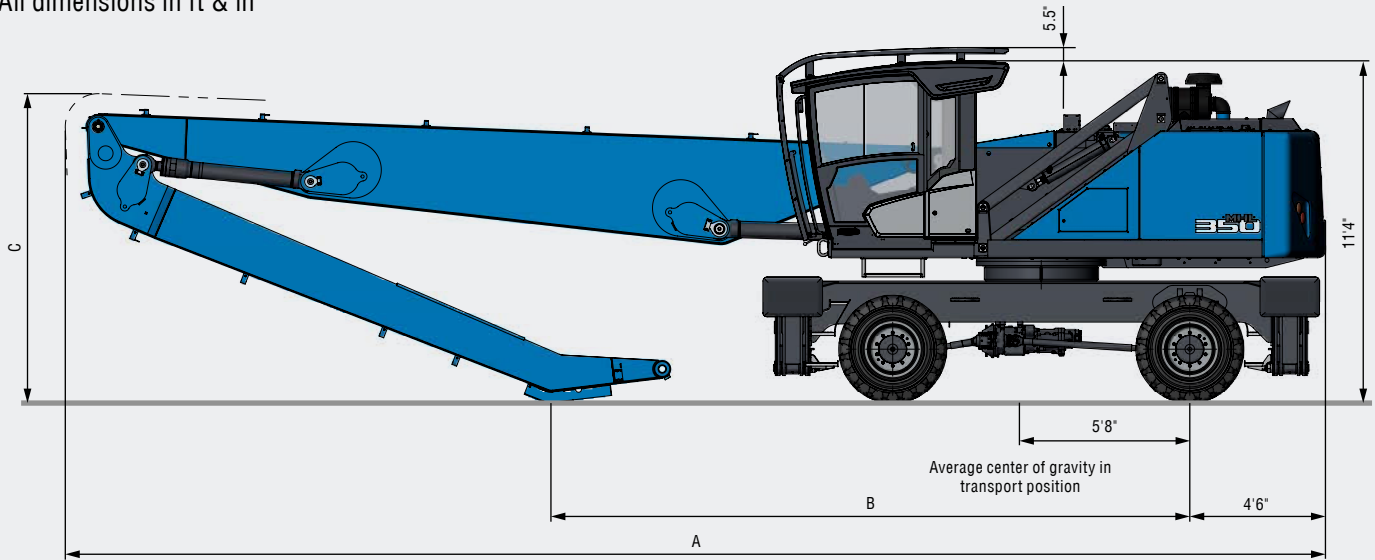
DIMENSIONS MHL350 F

All dimensions in ft & in



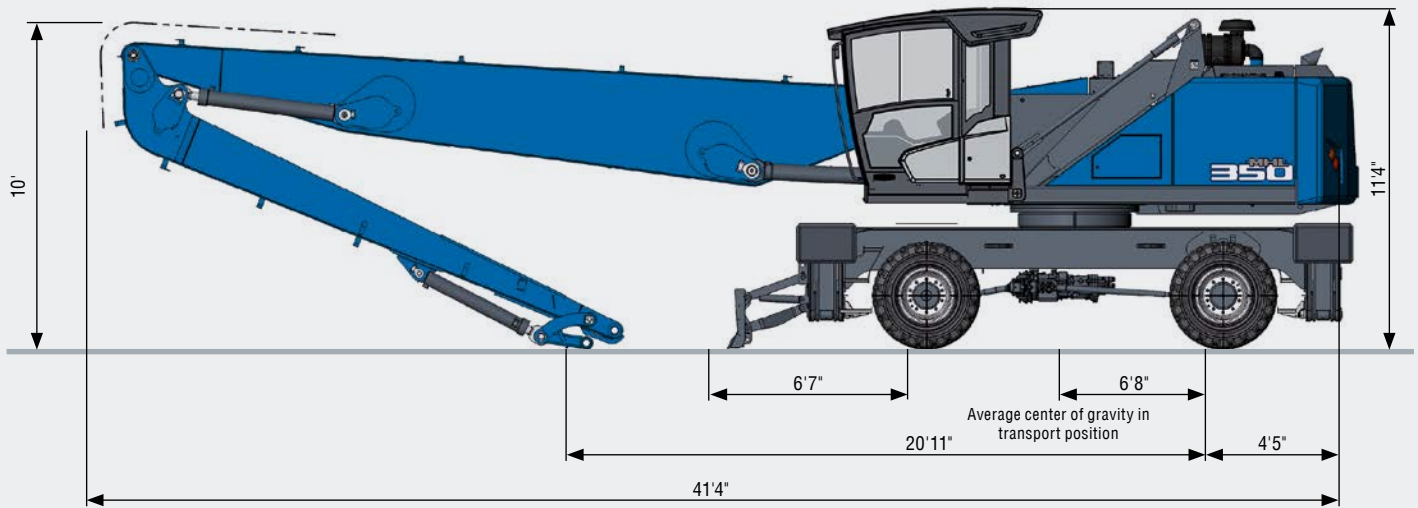
TRANSPORT DIMENSIONS MHL350 F

All dimensions in ft & in



| Dimensions | Reach 52'6" | Reach 49'3" |
|------------|-------------|-------------|
| A | 41'8" | 41'9" |
| B | 19'7" | 21'2" |
| C | 11'11" | 10'3" |

Reach 48'3" | With multi-purpose stick | All dimensions in ft & in



LOADING SYSTEMS WITH DIPPERSTICK OR MULTI-PURPOSE STICK

| Component | MHL350 | | | MHL355 |
|---------------------------|-------------|-------------|----------------|-------------|
| | Reach 52'6" | Reach 49'3" | 48'3" with MPS | Reach 52'6" |
| Straight boom 27.8' | • | • | • | • |
| Dipperstick 20.3' | | • | | |
| Dipperstick 23.6' | • | | | • |
| Multi-purpose stick 18.4' | | | • | |

WORKING RANGE

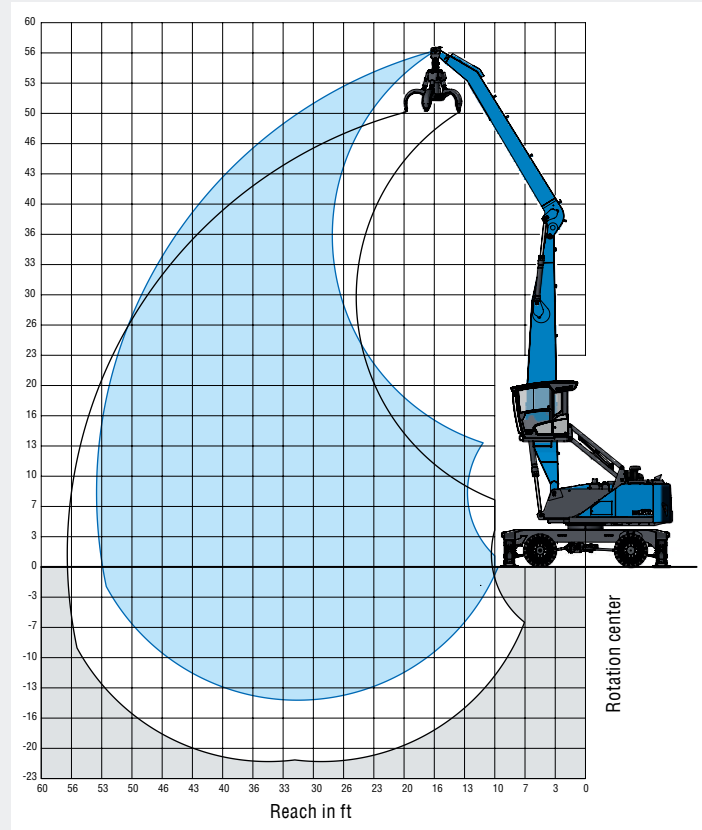
REACH 52'6" WITH DIPPER STICK

| | |
|-------------------|--------------------|
| Loading equipment | Boom 27.8' |
| | Dipper stick 23.6' |
| | Multi-tine grapple |

RECOMMENDED ATTACHMENTS

| | |
|---|---|
| Fuchs multi-tine grapple 0.78 yd ³ | Open or half-closed |
| Fuchs magnetic plate MP 1150 | dia = 45.3" with 13 kW magnet system |
| Clamshell grab 1.31 yd ³ | Density of materials handled up to 49.9 lbs/ft ³ |

The lift capacity values are stated in imperial pounds (lbs). The pump pressure is 5,220 psi. In accordance with ISO 10567 the lift capacity values represents 75% of the static tipping loads or 87% of the hydraulic lifting force (marked *). On solid and level ground the values apply to a swing range of 360°. The (...) values apply in the longitudinal direction of the undercarriage. The values for "not supported" only apply via the steering axle or the locked oscillating axle. The weights of the attached load hoisting equipment (grab, load hock, etc.) must be deducted from the lift capacity values. The working load of the lifting device must be observed. In accordance with the EN 474-5 for object handling application hose rupture valves on the boom and stick cylinders, an overload warning device and the lift capacity table in the cab are required. For object handling application the machine has to be supported on a level ground.



LIFTING CAPACITY

| Height [ft] | Undercarriage outrigger | Reach [ft] | | | | | | | | |
|-------------|-------------------------|-------------------------|-------------------|-------------------|-------------------|-------------------|-------------------|-----------------|-----------------|-----------------|
| | | 15 | 20 | 25 | 30 | 35 | 40 | 45 | 50 | |
| 55 | not supported | | (9,360°) | | | | | | | |
| | 4-point supported | | 9,360° (9,360°) | | | | | | | |
| 50 | not supported | | | (10,310°) | (7,380°) | | | | | |
| | 4-point supported | | | 10,310° (10,310°) | 7,380° (7,380°) | | | | | |
| 45 | not supported | | | | (10,380°) | (7,720°) | | | | |
| | 4-point supported | | | | 10,380° (10,380°) | 7,720° (7,720°) | | | | |
| 40 | not supported | | | | (11,940°) | (9,620) | (7,230°) | | | |
| | 4-point supported | | | | 11,940° (11,940°) | 10,150° (10,150°) | 7,230° (7,230°) | | | |
| 35 | not supported | | | | (12,670) | (9,660) | (7,520) | (5,830°) | | |
| | 4-point supported | | | | 13,110° (13,110°) | 11,770° (11,770°) | 9,570° (9,570°) | 5,830° (5,830°) | | |
| 30 | not supported | | | | (12,500) | (9,550) | (7,470) | (5,910) | | |
| | 4-point supported | | | | 13,810° (13,810°) | 12,410° (12,410°) | 11,250° (11,250°) | 8,290° (8,290°) | | |
| 25 | not supported | | | (16,040°) | (12,140) | (9,310) | (7,320) | (5,840) | (4,670) | |
| | 4-point supported | | | 16,040° (16,040°) | 14,250° (14,250°) | 12,660° (12,660°) | 11,370° (11,370°) | 9,500 (10,100°) | 6,330° (6,330°) | |
| 20 | not supported | | | (15,680) | (11,610) | (8,950) | (7,080) | (5,690) | (4,610) | |
| | 4-point supported | | | 17,370° (17,370°) | 14,890° (14,890°) | 13,030° (13,030°) | 11,390 (11,560°) | 9,350 (10,330°) | 7,790 (8,360°) | |
| 15 | not supported | (22,280°) | (20,840) | (14,610) | (10,930) | (8,500) | (6,780) | (5,500) | (4,510) | |
| | 4-point supported | 22,280° (22,280°) | 23,410° (23,410°) | 18,730° (18,730°) | 15,650° (15,650°) | 13,460° (13,460°) | 11,080 (11,770°) | 9,150 (10,390°) | 7,680 (9,120) | |
| 10 | not supported | (28,740) | (18,620) | (13,380) | (10,180) | (8,020) | (6,460) | (5,300) | (4,390) | |
| | 4-point supported | 37,430° (37,430°) | 26,000° (26,000°) | 20,050° (20,050°) | 16,370° (16,370°) | 13,180 (13,830°) | 10,730 (11,930°) | 8,930 (10,390°) | 7,550 (8,980°) | |
| 5 | not supported | (11,850°) | (16,590) | (12,220) | (9,450) | (7,540) | (6,150) | (5,090) | (4,270) | |
| | 4-point supported | 11,850° (11,850°) | 27,660° (27,660°) | 20,850° (20,850°) | 15,906 (15,840°) | 12,670 (14,040°) | 10,400 (11,950°) | 8,710 (10,260°) | 7,420 (8,700°) | |
| 0 | not supported | (8,450°) | (15,210) | (11,320) | (8,850) | (7,140) | (5,880) | (4,920) | (4,180) | |
| | 4-point supported | 8,450° (8,450°) | 20,370° (20,370°) | 19,830 (21,060°) | 15,240 (16,860°) | 12,240 (13,940°) | 10,110 (11,740°) | 8,530 (9,920°) | 7,320 (8,170°) | |
| -5 | not supported | (8,610°) | (14,490) | (10,740) | (8,430) | (6,840) | (5,680) | (4,800) | (4,130) | |
| | 4-point supported | 8,610° (8,610°) | 15,840° (15,840°) | 19,180 (20,230°) | 14,780 (16,280°) | 11,920 (13,410°) | 9,890 (11,180°) | 8,400 (9,250°) | 7,250° (7,250°) | |
| -10 | not supported | | (14,240) | (10,740) | (8,200) | (6,670) | (5,570) | (4,750) | | |
| | 4-point supported | | 15,060° (15,060°) | 18,390° (18,390°) | 14,530 (14,970°) | 11,730 (12,330°) | 9,780 (10,130°) | 8,100° (8,100°) | | |
| | | Max. reach 52.8' | | | | | | | | |
| 8.2 | not supported | | | | | | | | (3,800) | |
| | 4-point supported | | | | | | | | | 4,360° (4,360°) |

WORKING RANGE

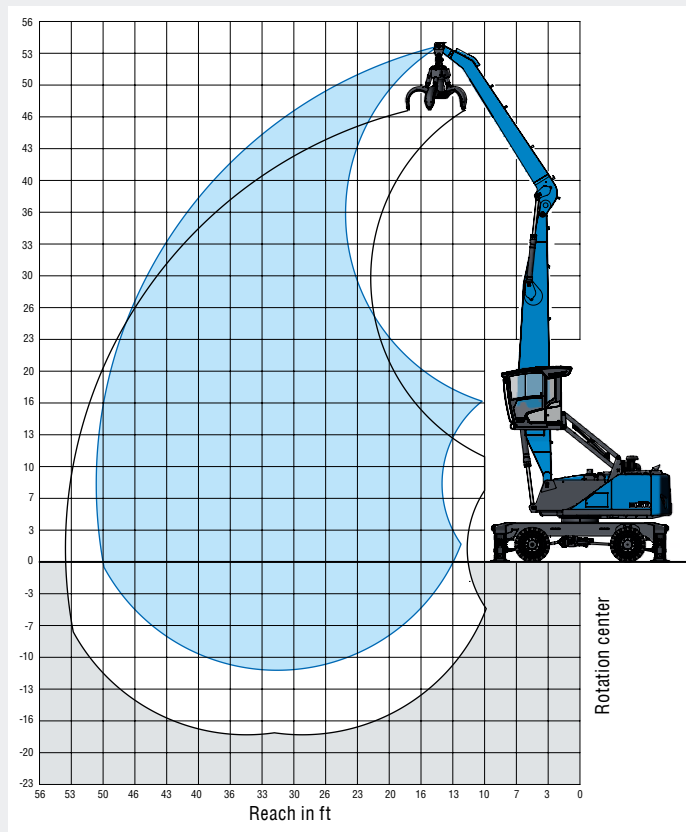
REACH 49'3" WITH DIPPER STICK

| | |
|-------------------|--|
| Loading equipment | Boom 27.8' Dipper stick 20.3' Multi-tine grapple |
|-------------------|--|

RECOMMENDED ATTACHMENTS

| | |
|---|---|
| Fuchs multi-tine grapple 0.78 yd ³ | Open or half-closed |
| Fuchs multi-tine grapple 1.05 yd ³ | Open or half-closed |
| Fuchs magnetic plate MP 1250 | dia = 49.2" with 20 kW magnet system |
| Clamshell grab 1.83 yd ³ | Density of materials handled up to 99.9 lbs/ft ³ |
| Clamshell grab 2.09 yd ³ | Density of materials handled up to 49.9 lbs/ft ³ |
| Lift hook | 22,000 lbs |

The lift capacity values are stated in imperial pounds (lbs). The pump pressure is 5,220 psi. In accordance with ISO 10567 the lift capacity values represents 75% of the static tipping loads or 87% of the hydraulic lifting force (marked °). On solid and level ground the values apply to a swing range of 360°. The (...) values apply in the longitudinal direction of the undercarriage. The values for "not supported" only apply via the steering axle or the locked oscillating axle. The weights of the attached load hoisting equipment (grab, load hook, etc.) must be deducted from the lift capacity values. The working load of the lifting device must be observed. In accordance with the EN 474-5 for object handling application hose rupture valves on the boom and stick cylinders, an overload warning device and the lift capacity table in the cab are required. For object handling application the machine has to be supported on a level ground.



LIFTING CAPACITY

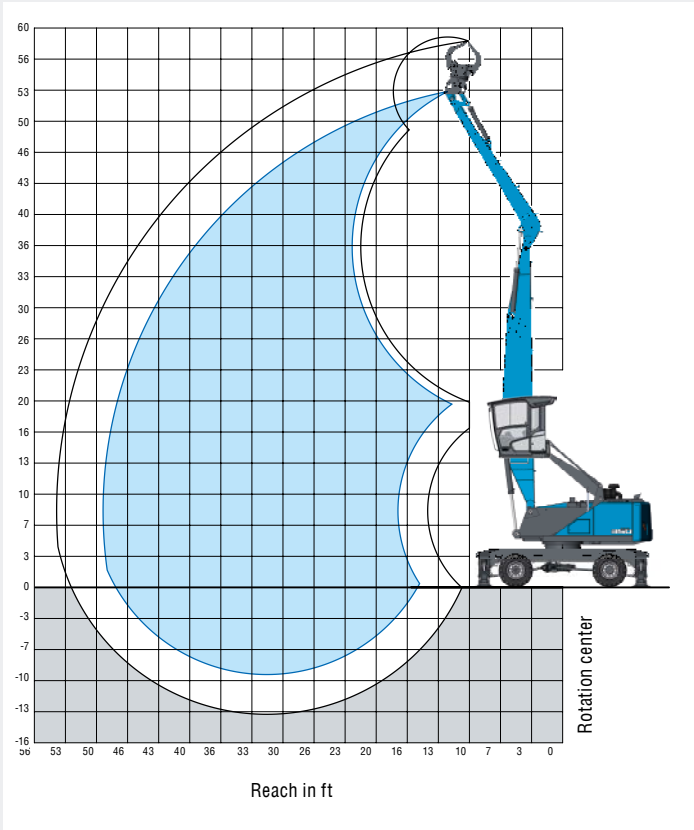
| Height [ft] | Undercarriage outrigger | Reach [ft] | | | | | | | | |
|-------------|-------------------------|-------------------------|-------------------|-------------------|-------------------|-------------------|-------------------|------------------|-----------------|---------|
| | | 15 | 20 | 25 | 30 | 35 | 40 | 45 | 50 | |
| 50 | not supported | | (12,110°) | (8,280°) | | | | | | |
| | 4-point supported | | 12,110° (12,110°) | 8,280° (8,280°) | | | | | | |
| 45 | not supported | | | (12,590°) | (9,590°) | | | | | |
| | 4-point supported | | | 12,590° (12,590°) | 9,590° (9,590°) | | | | | |
| 40 | not supported | | | (14,520°) | (12,110°) | (9,150°) | | | | |
| | 4-point supported | | | 14,520° (14,520°) | 12,630° (12,630°) | 9,530° (9,530°) | | | | |
| 35 | not supported | | | (15,940°) | (12,170°) | (9,270°) | (7,170°) | | | |
| | 4-point supported | | | 15,940° (15,940°) | 14,610° (14,610°) | 12,360° (12,360°) | 8,520° (8,520°) | | | |
| 30 | not supported | | | (16,290°) | (12,020°) | (9,200°) | (7,190°) | (5,650°) | | |
| | 4-point supported | | | 16,950° (16,950°) | 14,780° (14,780°) | 13,130° (13,130°) | 11,410° (11,410°) | 5,900° (5,900°) | | |
| 25 | not supported | | | (15,770°) | (11,670°) | (8,980°) | (7,080°) | (5,650°) | | |
| | 4-point supported | | | 17,670° (17,670°) | 15,200° (15,200°) | 13,350° (13,350°) | 11,380° (11,870°) | 9,060° (9,060°) | | |
| 20 | not supported | | (21,400) | (14,960) | (11,160) | (8,660) | (6,880) | (5,550) | | |
| | 4-point supported | | 23,160° (23,160°) | 18,740° (18,740°) | 15,800° (15,800°) | 13,670° (13,670°) | 11,170° (12,010°) | 9,190° (10,600°) | | |
| 15 | not supported | | (19,530) | (13,910) | (10,520) | (8,250) | (6,630) | (5,140) | (4,440) | |
| | 4-point supported | 36,010° (36,010°) | 25,560° (25,560°) | 19,980° (19,980°) | 16,460° (16,460°) | 13,430° (14,000°) | 10,900° (12,140°) | 9,030° (10,580°) | 6,450° (6,450°) | |
| 10 | not supported | | (14,190°) | (17,470) | (12,790) | (9,850) | (7,830) | (6,360) | (5,240) | (4,370) |
| | 4-point supported | 14,190° (14,190°) | 27,610° (27,610°) | 21,010° (21,010°) | 16,320° (16,990°) | 12,970° (14,240°) | 10,610° (12,180°) | 8,860° (10,460°) | 7,520° (7,520°) | |
| 5 | not supported | | (15,840) | (11,820) | (9,240) | (7,430) | (6,100) | (5,090) | (4,310) | |
| | 4-point supported | | 22,860° (22,860°) | 20,380° (21,430°) | 15,650° (17,180°) | 12,540° (14,250°) | 10,340° (12,030°) | 8,700° (10,170°) | 7,460° (7,460°) | |
| 0 | not supported | | (14,930) | (11,150) | (8,770) | (7,120) | (5,900) | (4,970) | (4,280) | |
| | 4-point supported | | 15,510° (15,510°) | 19,610° (20,930°) | 15,130° (16,830°) | 12,200° (13,880°) | 10,120° (11,590°) | 8,580° (9,580°) | 6,720° (6,720°) | |
| -5 | not supported | | (14,450°) | (10,780) | (8,480) | (6,910) | (5,770) | (4,910) | | |
| | 4-point supported | | 14,450° (14,450°) | 19,210° (19,210°) | 14,820° (15,780°) | 11,970° (13,000°) | 9,980° (10,710°) | 8,510° (8,510°) | | |
| -10 | not supported | | | (10,680) | (8,370) | (6,830) | | | | |
| | 4-point supported | | | 16,810° (16,810°) | 13,930° (13,930°) | 11,460° (11,460°) | | | | |
| | | Max. reach 49.9' | | | | | | | | |
| 8.2 | not supported | | | | | | | | (4,240) | |
| | 4-point supported | | | | | | | | 5,430° (5,430°) | |

WORKING RANGE

REACH 48'3" WITH MULTI-PURPOSE STICK

| | |
|-------------------|---------------------------|
| Loading equipment | Boom 27.9' |
| | Multi-purpose stick 18.4' |
| | Sorting grab |

The lift capacity values are stated in imperial pounds (lbs). The pump pressure is 5,220 psi. In accordance with ISO 10567 the lift capacity values represents 75% of the static tipping loads or 87% of the hydraulic lifting force (marked °). On solid and level ground the values apply to a swing range of 360°. The (...) values apply in the longitudinal direction of the undercarriage. The values for "not supported" only apply via the steering axle or the locked oscillating axle. The weights of the attached load hoisting equipment (grab, load hock, etc.) must be deducted from the lift capacity values. The working load of the lifting devise must be observed. In accordance with the EN 474-5 for object handling application hose rupture valves on the boom and stick cylinders, an overload warning device and the lift capacity table in the cab are required. For object handling application the machine has to be supported on a level ground.

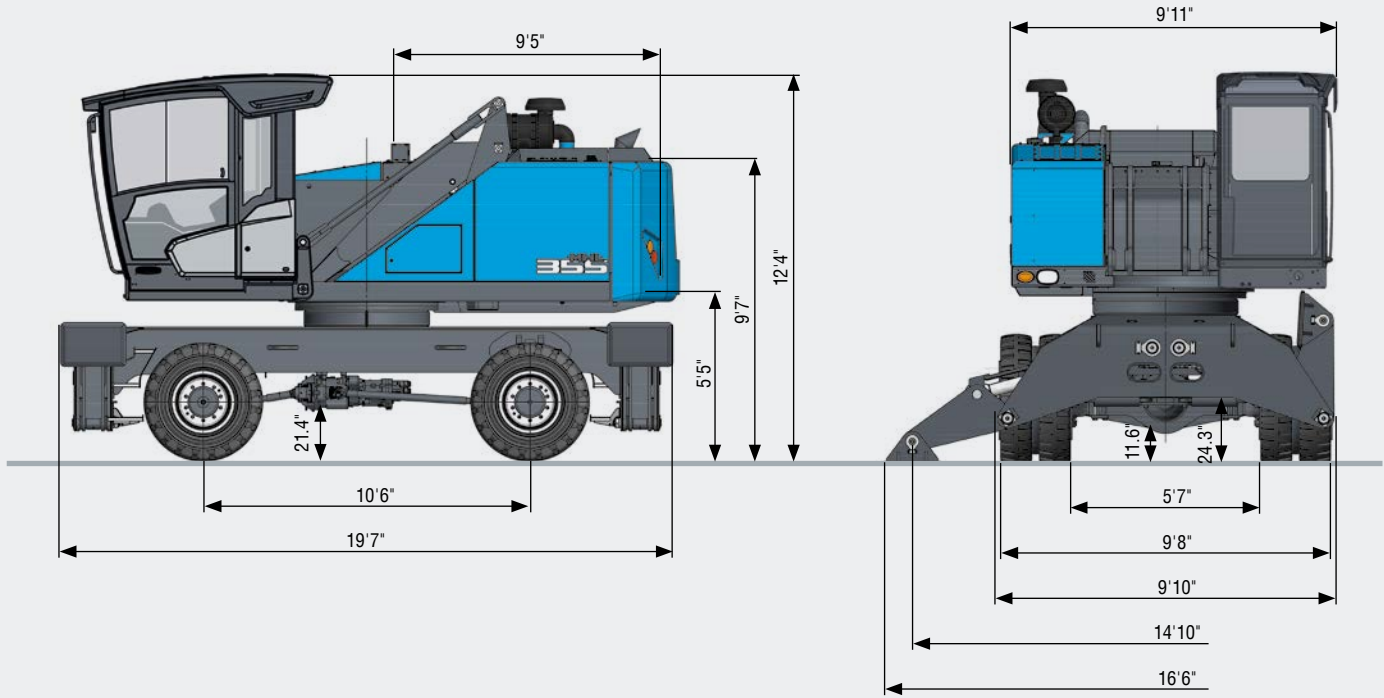


LIFTING CAPACITY

| Height [ft] | Undercarriage outrigger | Reach [ft] | | | | | | |
|-------------|-------------------------|-------------------|-------------------|-------------------|-------------------|-------------------|-------------------|-------------------------|
| | | 15 | 20 | 25 | 30 | 35 | 40 | 45 |
| 50 | not supported | | 10,100° | | | | | |
| | 4-point supported | | 10,100° (10,100°) | | | | | |
| 45 | not supported | | | (11,900°) | | | | |
| | 4-point supported | | | 11,900° (11,900°) | | | | |
| 40 | not supported | | | (14,800°) | (11,200) | (7,500°) | | |
| | 4-point supported | | | 14,800° (14,800°) | 12,100° (12,100°) | 7,500° (7,500°) | | |
| 35 | not supported | | | (15,700) | (11,500) | (8,600) | (5,800°) | |
| | 4-point supported | | | 16,800° (16,800°) | 14,600° (14,600°) | 11,900° (11,900°) | 5,800° (5,800°) | |
| 30 | not supported | | | (15,400) | (11,200) | (8,600) | (6,600) | |
| | 4-point supported | | | 17,200° (17,200°) | 14,800° (14,800°) | 13,000° (13,000°) | 10,400° (10,400°) | |
| 25 | not supported | | (21,600°) | (15,000) | (11,000) | (8,400) | (6,400) | (5,100) |
| | 4-point supported | | 21,800° (21,800°) | 17,900° (17,900°) | 15,200° (15,200°) | 13,000° (13,000°) | 10,800° (11,500°) | 6,600° (6,600°) |
| 20 | not supported | (30,200°) | (20,300) | (14,100) | (10,400) | (7,900) | (6,400) | (5,100) |
| | 4-point supported | 30,200° (30,200°) | 23,800° (23,800°) | 18,700° (18,700°) | 15,700° (15,700°) | 13,200 (13,400°) | 10,600 (11,700°) | 8,600 (9,700°) |
| 15 | not supported | (28,200) | (18,300) | (13,000) | (9,700) | (7,700) | (6,200) | (4,900) |
| | 4-point supported | 37,700° (37,700°) | 26,000° (26,000°) | 19,800° (19,800°) | 16,300° (16,300°) | 12,800 (13,700°) | 10,400 (11,700°) | 8,600 (9,900°) |
| 10 | not supported | | (16,300) | (11,900) | (9,300) | (7,300) | (5,800) | (4,900) |
| | 4-point supported | | 27,600° (27,600°) | 20,500 (20,700°) | 15,700 (16,500°) | 12,300 (13,700°) | 10,100 (11,700°) | 8,400 (9,700°) |
| 5 | not supported | | (15,000) | (11,000) | (8,600) | (6,800) | (5,500) | (4,600) |
| | 4-point supported | | 16,800° (16,800°) | 19,600 (20,700°) | 15,000 (16,500°) | 11,900 (13,700°) | 9,900 (11,200°) | 8,200 (9,300°) |
| 0 | not supported | | (13,400°) | (10,600) | (8,200) | (6,600) | (5,500) | (4,600) |
| | 4-point supported | | 13,400° (13,400°) | 19,000 (19,800°) | 14,600 (15,900°) | 11,700 (13,000°) | 9,700 (10,800°) | 8,200 (8,600°) |
| -1.5 | not supported | | (13,700°) | (10,400) | (7,900) | (6,400) | (5,300) | |
| | 4-point supported | | 13,700° (13,700°) | 17,900° (17,900°) | 14,300 (14,600°) | 11,500 (11,900°) | 9,500° (9,700°) | |
| | | | | | | | | Max. reach 48.2' |
| 8.2 | not supported | | | | | | | (4,000) |
| | 4-point supported | | | | | | | 5,800° (5,800°) |

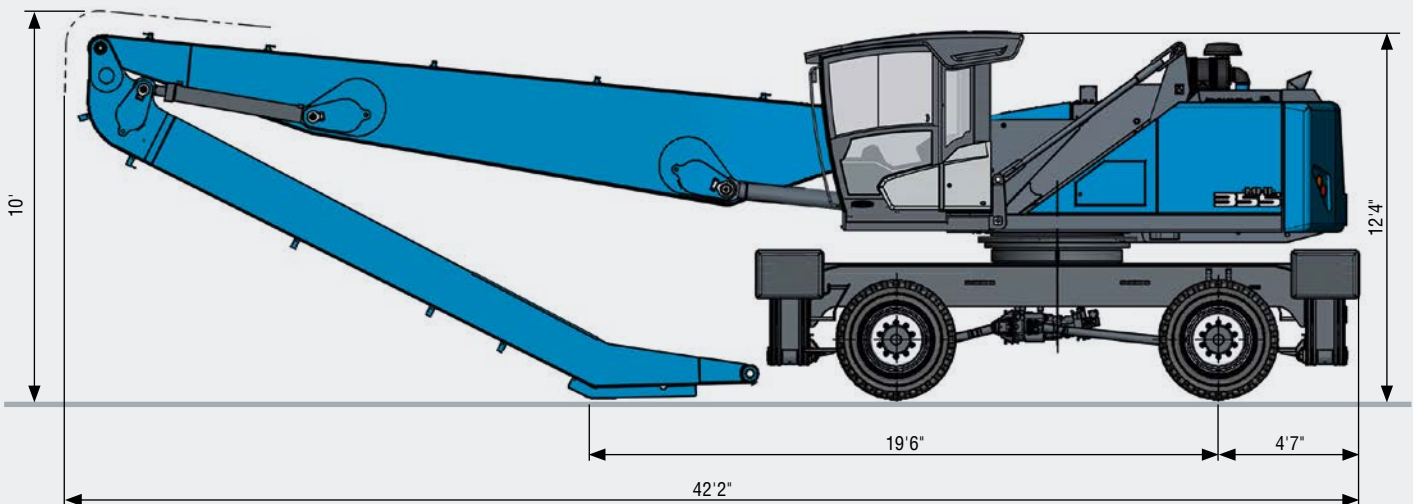
DIMENSIONS MHL355 F

All dimensions in ft and in



TRANSPORT DIMENSIONS MHL355 F

All dimensions in ft and in



WORKING RANGE

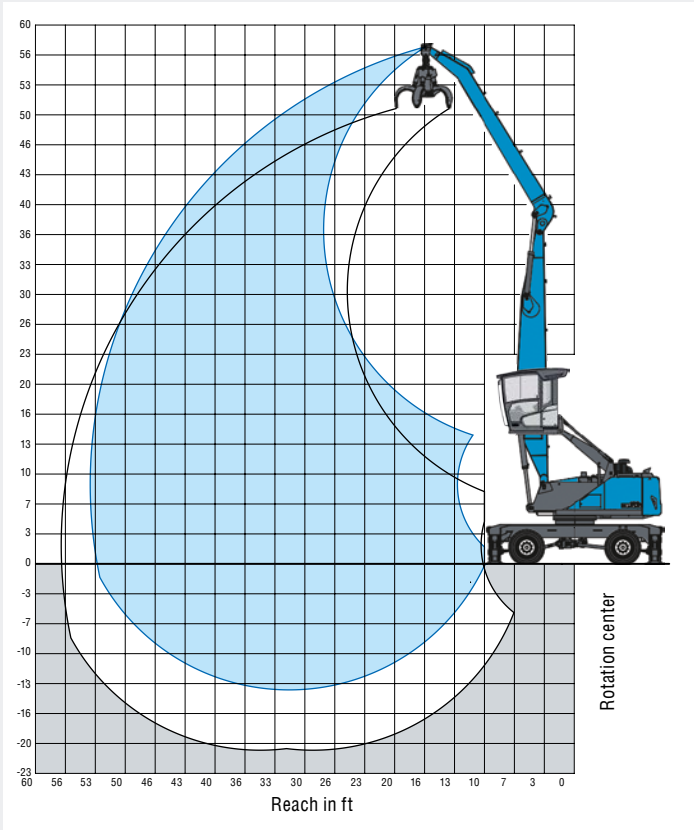
REACH 52'6" WITH DIPPER STICK

| | |
|-------------------|--------------------|
| Loading equipment | Boom 27.9' |
| | Dipperstick 23.6' |
| | Multi-tine grapple |

RECOMMENDED ATTACHMENTS

| | |
|--|---|
| Fuchs multi-tine grapple 0.78yd ³ | Open or half-closed |
| Fuchs magnetic plate MP 1150 | dia = 45.3" with 13kW magnet system |
| Clamshell grab 1.31 yd ³ | Density of materials handled up to 49.9 lbs/ft ³ |

The lift capacity values are stated in imperial pounds (lbs). The pump pressure is 5,220 psi. In accordance with ISO 10567 the lift capacity values represents 75% of the static tipping loads or 87% of the hydraulic lifting force (marked °). On solid and level ground the values apply to a swing range of 360°. The (...) values apply in the longitudinal direction of the undercarriage. The values for "not supported" only apply via the steering axle or the locked oscillating axle. The weights of the attached load hoisting equipment (grab, load hock, etc.) must be deducted from the lift capacity values. The working load of the lifting devise must be observed. In accordance with the EN 474-5 for object handling application hose rupture valves on the boom and stick cylinders, an overload warning device and the lift capacity table in the cab are required. For object handling application the machine has to be supported on a level ground.





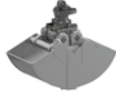
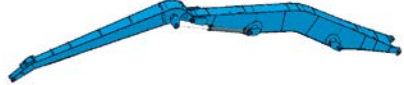


LIFTING CAPACITY

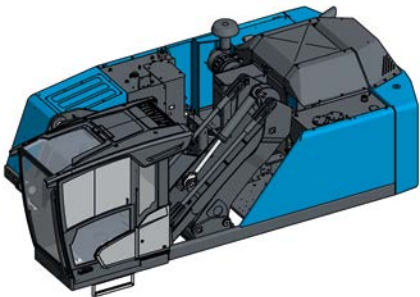
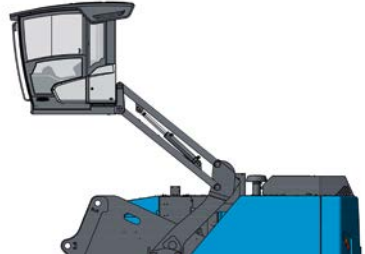
| Height [ft] | Undercarriage outrigger | Reach [ft] | | | | | | | | |
|-------------|-------------------------|---|---|---|---|---|---|---|---|---|
| | | 10 | 15 | 20 | 25 | 30 | 35 | 40 | 45 | 50 |
| 55 | not supported | | | (9,900) [°] | | | | | | |
| | 4-point supported | | | 9,900 [°] (9,900) [°] | | | | | | |
| 50 | not supported | | | | (10,600) [°] | (7,900) [°] | | | | |
| | 4-point supported | | | | 10,600 [°] (10,600) [°] | 7,900 [°] (7,900) [°] | | | | |
| 45 | not supported | | | | | (10,600) [°] | (8,200) [°] | | | |
| | 4-point supported | | | | | 10,600 [°] (10,600) [°] | 8,200 [°] (8,200) [°] | | | |
| 40 | not supported | | | | | (12,100) [°] | (10,400) [°] | (7,500) [°] | | |
| | 4-point supported | | | | | 12,100 [°] (12,100) [°] | 10,400 [°] (10,400) [°] | 7,500 [°] (7,500) [°] | | |
| 35 | not supported | | | | | (13,200) [°] | (11,700) [°] | | (6,200) [°] | |
| | 4-point supported | | | | | 13,200 [°] (13,200) [°] | 11,900 [°] (11,900) [°] | 9,900 [°] (9,900) [°] | 6,200 [°] (6,200) [°] | |
| 30 | not supported | | | | | (13,900) [°] | (11,700) [°] | (9,300) [°] | (7,500) [°] | |
| | 4-point supported | | | | | 13,900 [°] (13,900) [°] | 12,300 [°] (12,300) [°] | 11,200 [°] (11,200) [°] | 8,600 [°] (8,600) [°] | |
| 25 | not supported | | | (16,300) [°] | (14,300) [°] | (11,500) [°] | (9,000) [°] | (7,500) [°] | (6,000) [°] | |
| | 4-point supported | | | 16,300 [°] (16,300) [°] | 14,300 [°] (14,300) [°] | 12,800 [°] (12,800) [°] | 11,500 [°] (11,500) [°] | 10,400 [°] (10,400) [°] | 6,000 [°] (6,000) [°] | |
| 20 | not supported | | | (17,600) [°] | (14,100) [°] | (11,000) [°] | (8,800) [°] | (7,300) [°] | (6,000) [°] | |
| | 4-point supported | | | 17,600 [°] (17,600) [°] | 15,000 [°] (15,000) [°] | 13,000 [°] (13,000) [°] | 11,700 [°] (11,700) [°] | 10,400 [°] (10,400) [°] | 7,500 [°] (7,500) [°] | |
| 15 | not supported | | (24,900) [°] | (23,800) [°] | (17,900) [°] | (13,400) [°] | (10,600) [°] | (8,600) [°] | (7,100) [°] | (6,000) [°] |
| | 4-point supported | | 24,900 [°] (24,900) [°] | 23,800 [°] (23,800) [°] | 19,000 [°] (19,000) [°] | 15,700 [°] (15,700) [°] | 13,400 [°] (13,400) [°] | 11,900 [°] (11,900) [°] | 10,400 [°] (10,400) [°] | 8,800 [°] (8,800) [°] |
| 10 | not supported | | (35,300) [°] | (22,900) [°] | (16,500) [°] | (12,600) [°] | (10,100) [°] | (8,200) [°] | (6,800) [°] | (5,800) [°] |
| | 4-point supported | | 38,100 [°] (38,100) [°] | 14,200 [°] (14,200) [°] | 20,300 [°] (20,300) [°] | 16,500 [°] (16,500) [°] | 13,900 [°] (13,900) [°] | 11,900 [°] (11,900) [°] | 10,400 [°] (10,400) [°] | 9,000 [°] (9,000) [°] |
| 5 | not supported | | (10,800) [°] | (20,900) [°] | (15,400) [°] | (11,900) [°] | (9,700) [°] | (7,900) [°] | (6,600) [°] | (5,800) [°] |
| | 4-point supported | | 10,800 [°] (10,800) [°] | 27,800 [°] (27,800) [°] | 20,900 [°] (20,900) [°] | 17,000 [°] (17,000) [°] | 14,100 [°] (14,100) [°] | 11,900 [°] (11,900) [°] | 10,100 [°] (10,100) [°] | 8,600 [°] (8,600) [°] |
| 0 | not supported | (4,200) [°] | (8,400) [°] | (19,400) [°] | (14,600) [°] | (11,200) [°] | (9,300) [°] | (7,700) [°] | (6,400) [°] | (5,500) [°] |
| | 4-point supported | 4,200 [°] (4,200) [°] | 8,400 [°] (8,400) [°] | 19,400 [°] (19,400) [°] | 20,900 [°] (20,900) [°] | 16,800 [°] (16,800) [°] | 13,900 [°] (13,900) [°] | 11,700 [°] (11,700) [°] | 9,900 [°] (9,900) [°] | 8,200 [°] (8,200) [°] |
| -5 | not supported | | (8,600) [°] | (15,700) [°] | (13,900) [°] | (11,000) [°] | (8,800) [°] | (7,500) [°] | (6,400) [°] | (5,500) [°] |
| | 4-point supported | | 8,600 [°] (8,600) [°] | 15,700 [°] (15,700) [°] | 20,100 [°] (20,100) [°] | 16,100 [°] (16,100) [°] | 13,200 [°] (13,200) [°] | 11,000 [°] (11,000) [°] | 9,000 [°] (9,000) [°] | 7,100 [°] (7,100) [°] |
| -10 | not supported | | | (15,000) [°] | (13,700) [°] | (10,800) [°] | (8,800) [°] | (7,300) [°] | (6,400) [°] | |
| | 4-point supported | | | 15,000 [°] (15,000) [°] | 18,100 [°] (18,100) [°] | 14,800 [°] (14,800) [°] | 12,100 [°] (12,100) [°] | 9,900 [°] (9,900) [°] | 7,900 [°] (7,900) [°] | |

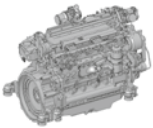
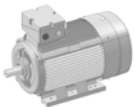

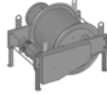

Max. reach 52.8'






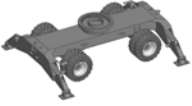
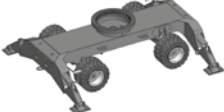
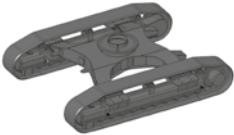
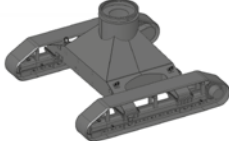
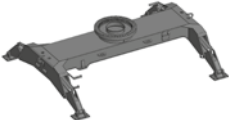
MODULAR SYSTEM

| Attachments | | Work equipment | | |
|---|--------------------|---|--|---|
| Furthermore: Timber grapple Scrap shears Magnet plate Load hook | Multi-tine grapple |  | Work equipment straight |  |
| | Sorting grapple |  | Work equipment with multipurpose stick |  |
| | Clamshell grab |  | Work equipment with banana boom |  |

Uppercarriage MHL350

| | | |
|--|--|--|
|  | Cab system hydraulically adjustable Viewing height: max. 18'4" |  |
|--|--|--|

| Engine | | Options | | |
|---|---|---|---|---|
| Diesel engine | Electric motor | Cable reel | Cable drum | Power Pack |
|  |  |  |  |  |

| Undercarriage | | | | |
|---|---|---|---|---|
| Pylon up to max. 2'6" | Pylon up to max. 4'6" | Pylon up to max. 2'6" | Pylon up to max. 12'1" | Pylon up to max. 12'1" |
|  |  |  |  |  |
|  |  |  |  |  |
| Mobile: Standard-undercarriage | Mobile special: For extended undercarriage | Crawler: Standard-undercarriage | Crawler: XL-undercarriage | Pedestal undercarriage |



WORKS FOR YOU.™

www.terex-fuchs.com

March 2018. Product specifications and prices are subject to change without notice or obligation. The photographs and/or drawings in this document are for illustrative purposes only. Refer to the appropriate Operator's Manual for instructions on the proper use of this equipment. Failure to follow the appropriate Operator's Manual when using our equipment or to otherwise act irresponsibly may result in serious injury or death. The only warranty applicable to our equipment is the standard written warranty applicable to the particular product and sale and Terex makes no other warranty, express or implied. © Terex Corporation 2018 · Terex, the Terex Crown design, Fuchs and Works For You are trademarks of Terex Corporation or its subsidiaries.

Terex® Deutschland GmbH | Industriestraße 3 | 76669 Bad Schönborn | Germany | Fon: +49 (0) 7253 84-0 | Fax: +49 (0) 7253 84-102 | info@terex-fuchs.com

