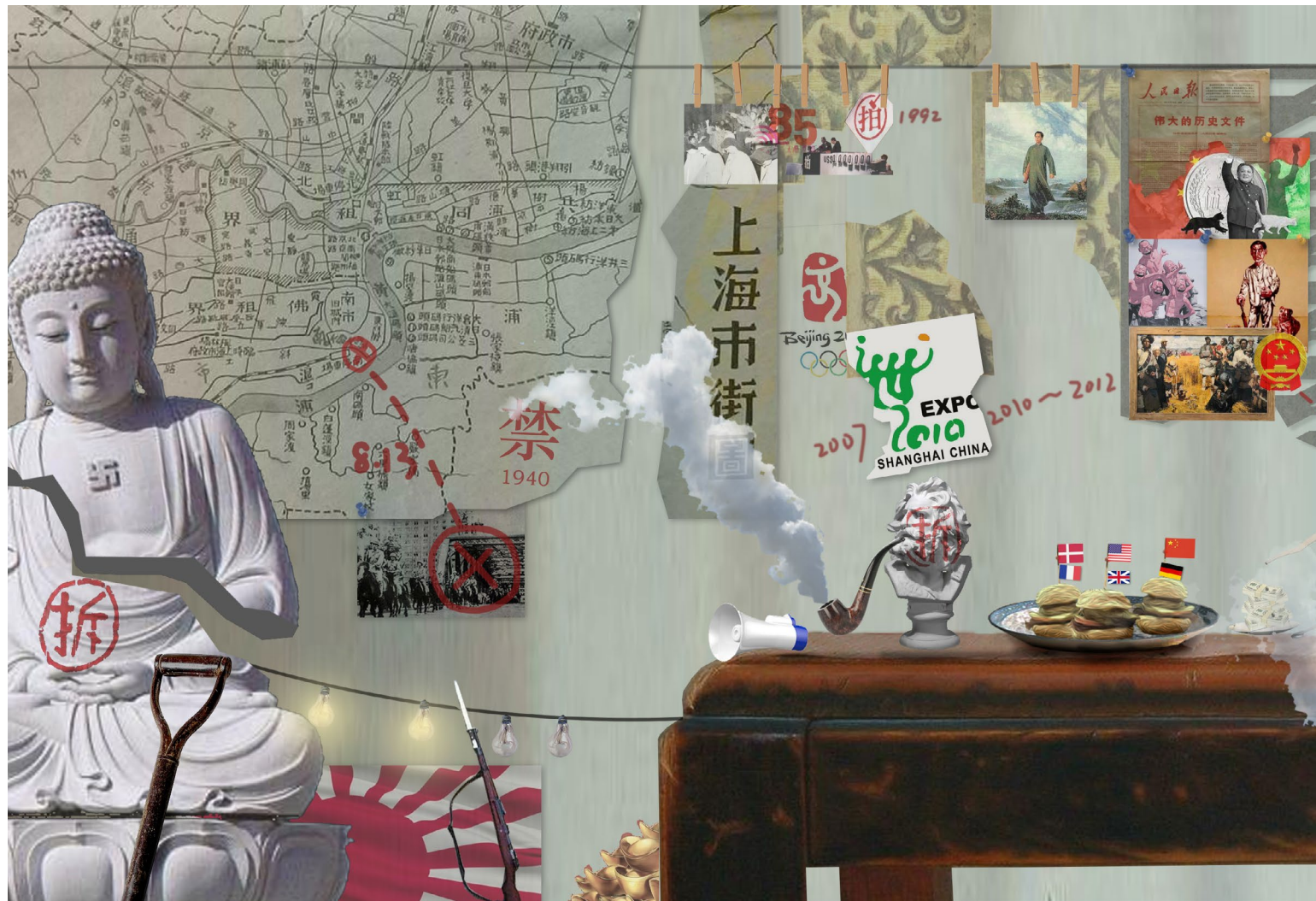


# QIJIAN CUI

Selected Works 2014-2022  
Architectural Portfolio





## 01 STILL SMOKING...

POST-COLONEL FOOTPRINT INVESTIGATION FILM  
STILLSMOKING.CARGO.SITE

Individual Work  
Instructor: WAI Think Tank  
Columbia University Graduate School of Architecture,  
Planning and Preservation.  
Location: New York, NY, USA  
Narrative Design - Core Studio, Summer 2021  
Grade: *High Pass (Top 5%)*

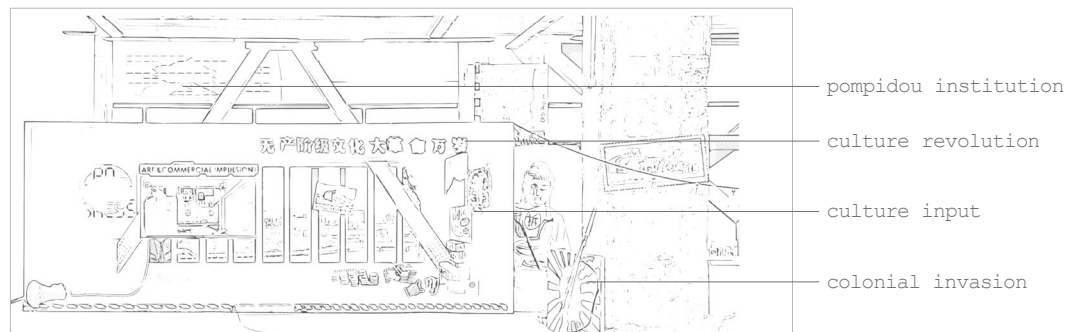
After the invasion of western colonizers in 1890, western products started pouring into the Chinese market. Concession culture became the symbol of Shanghai, even if it was the footprint of colonialism. Today, Shanghai is still the city with the most Starbucks in Asia. But not only material products but also the city's ideology is blended. As time goes by, Power Station of Art, the first government-owned contemporary museum, seems to become the portal of western ideology and the tool to control the public.



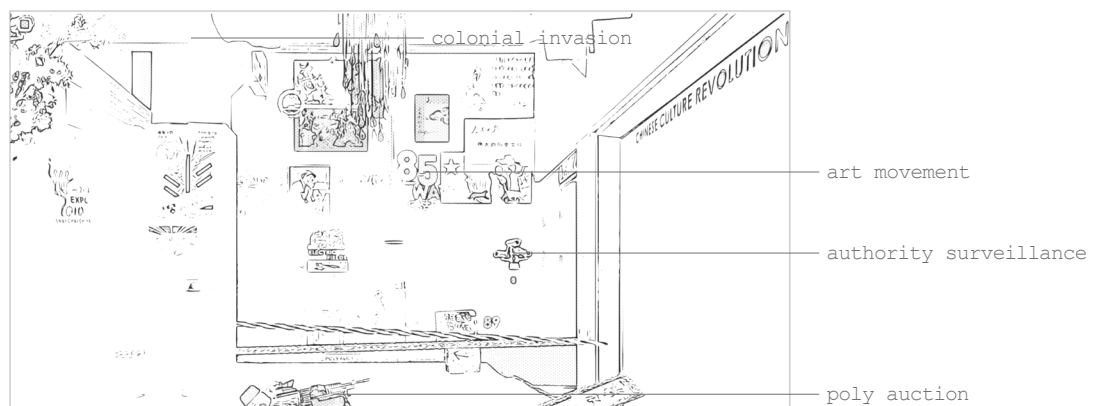
## THE LOUDREADING SCRIPT

00:30 Loudreading Tribune  
 00:31 Let's start from the beginning...  
 00:37 Once, there is a world, where artwork is used as fuel for power station to generate power...  
 00:42 All the people there need to manufacture art in order to earn their money...  
 00:47 For every piece of art they generate, one chance of loudreading is assigned with made-up lines...for ideology input...  
 00:58 In order to join the loop, you must get through the security check. Only Chinese people with western ideology is allowed.  
 01:07 Every sensitive item and "dangerous" ideology will be required to deposit.  
 01:12 After approved by customs, you can exchange your artwork for weights... And the artwork will be burned to generate smoke.  
 01:23 By using weight to lift yourself to the loudreading stage, you are required to say the rehearsed lines...  
 UNTIL ONE DAY!!! A rene; wakes up, decide to reveal the secret of the factory  
 01:48 Though the Power Station of Art has already been recompiled, there are still some footprints left...

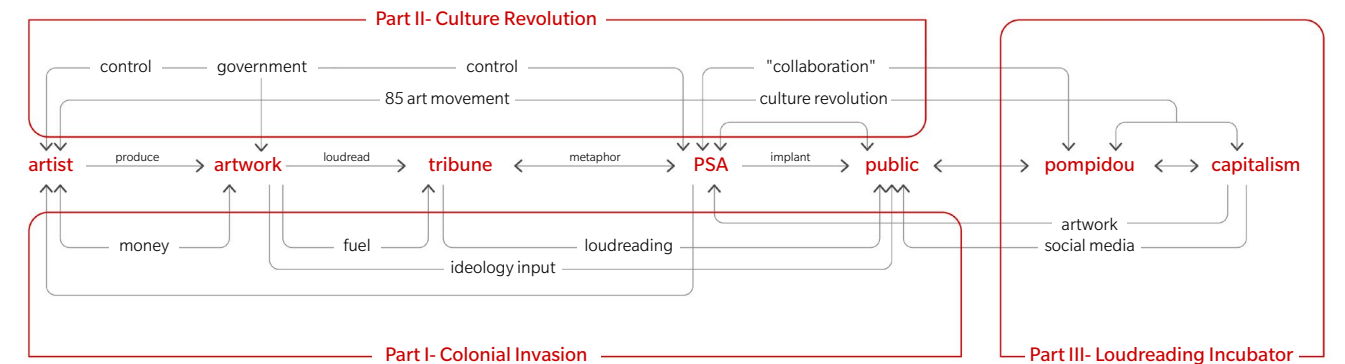
### Part1- Culture Invasion & Part2- Culture Revolution



### Part3- Loudreading Incubator



03:08 Loudreading Tribune  
 05:44 Video is used to attract more people to enter the loop. Just like PSA using emerging curators project to attract aboard talent.  
 05:50 After returning weights for the paycheck, people go back in line for the next loop.  
 [zoom out]  
 05:56 Together they formed a loop for generating infinite smoke of valuable contemporary art. it's a loop nobody can escape...  
 Thanks for watching, but the story CONTINUES...



### [SHANGHAI]

The Shanghai International Settlement originated from the merger in the year 1863 of the British and American enclaves in Shanghai, in which British subjects and American citizens would enjoy extraterritoriality and consular jurisdiction under the term of treaties signed in the 19th century with the Qing Dynasty, which was established following the defeat of the Qing army by the British in the First Opium War. The international settlement came to an abrupt end in December 1941 when Japanese troops stormed in immediately following the attack on Pearl Harbor. The power station was the product of imitating the British Shanghai electric company but then was taken over by the Japanese army during the war. The power generators were detained and used by the Japanese military to generate electricity. This period of history very much imprinted the land of Shanghai.

### [POWER]

After the Shanghai Expo, the area that PSA locates is defined as a cultural and art area. An art & artist incubator is what the government wants. The price of housing has tripled since the opening of the Shanghai Expo. But art is a very persuasive methodology, which the government would like to control by themselves. Then comes the proposal of PSA. Power Station of Art is merely a museum, a factory, or architecture; it symbolizes power. Power Station of Art is the first government-owned contemporary museum. The government entirely entitles the power of choosing and curating a modern art exhibition. Meanwhile, the art market in China has been one of the hottest markets in the world recently. And among all of the auction authorities, POLY is the most powerful institution, which is also government-owned and makes its living by manufacturing weapons. Rising the price of art can benefit the government to clean plenty of corruption funds and promote a specific type of artwork that the government would like to promote. To form a closed loop, PSA promotes the work to the public and convinced public with a certain artistic taste.

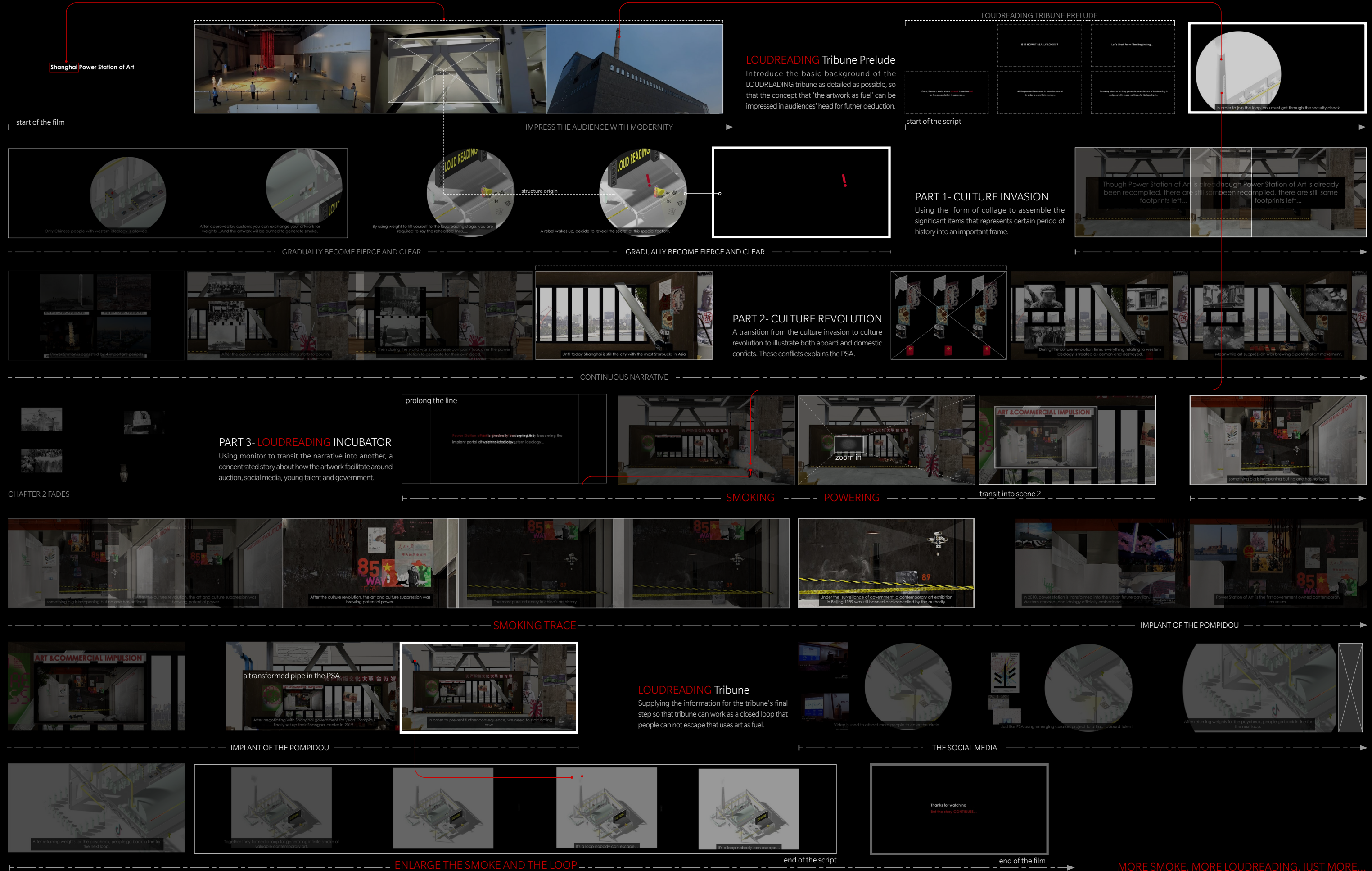
### [STATION OF ART]

The art exhibited in the PSA is carefully picked and reviewed by the authorities. Artwork should be not only modern, but also politically insensitive. Once it fits the artistic taste of the auction market, it will be immediately arranged on the exhibition agenda. Especially when the curator or the artist has the experience of studying aboard, or westernized ideology, the public will be willingly to purchase the tickets and post them on the social media.



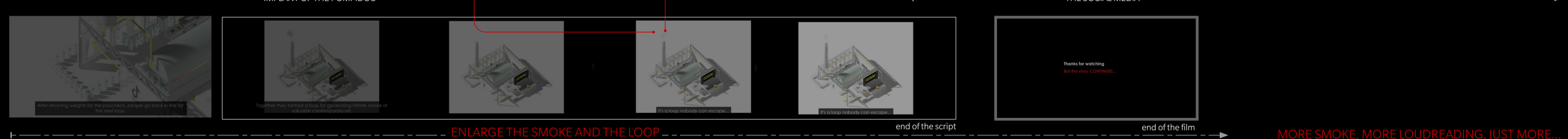
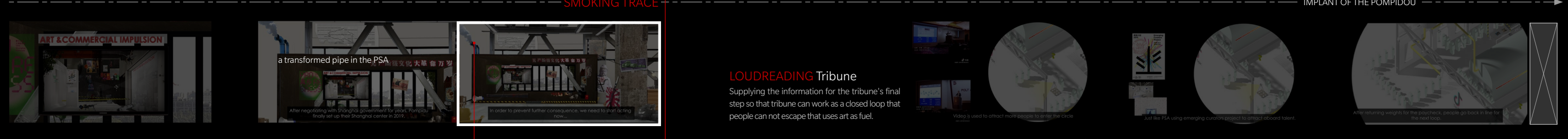
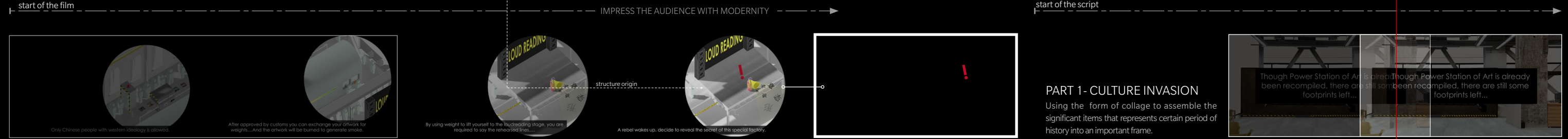
# STILL SMOKING SUBPLO

A carefully rehearsed loudreading, with the designed tribune as the main line, interspersed with 2 rooms from the Power Station of Art. The first room intends to articulate the background of the PSA and Shanghai, where the unique international settlement existed and formed a special quality.



## LOUDREADING Tribune Prelude

Introduce the basic background of the LOUDREADING tribune as detailed as possible, so that the concept that 'the artwork as fuel' can be impressed in audiences' head for further deduction.







## 02 ABOVE THE VIADUCT

### REAL AFFORDABLE HOUSING PROPOSAL IN BRADHURST, HARLEM

*Collaborator: Fang Wan*

*Instructor: Richard Plunz, Victor Body-Lawson*

*Location: Bradhurst, Harlem, New York.*

*Columbia University Graduate School of Architecture,  
Planning and Preservation.*

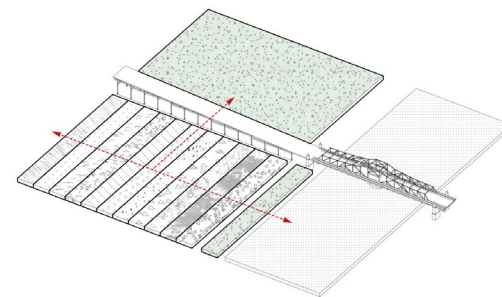
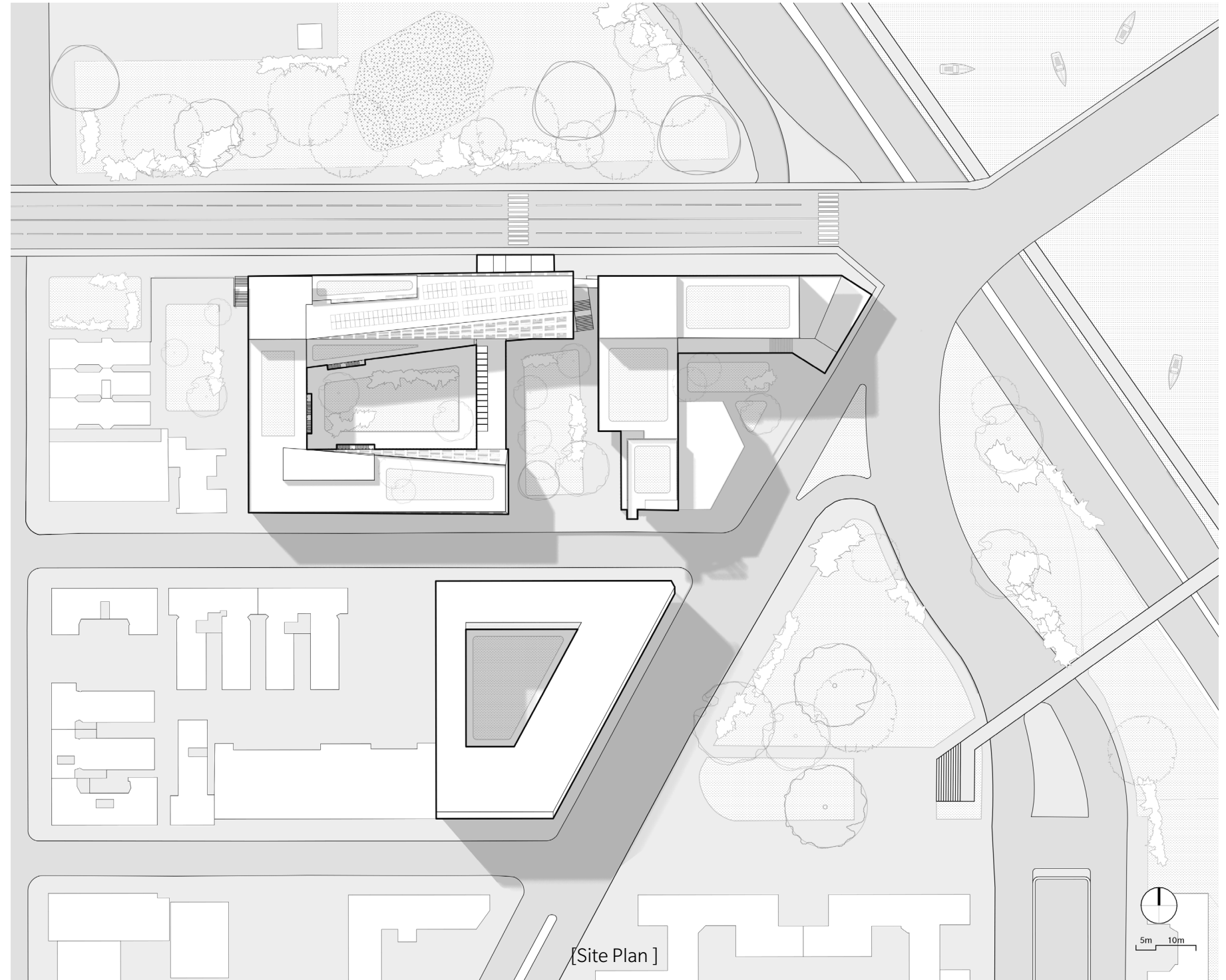
*Urban & Architectural Design - Fall, 2021*

*Design 70%, Drawing 70%, Physical Model 60%.*

*Grade: **High Pass (Top 5%)***

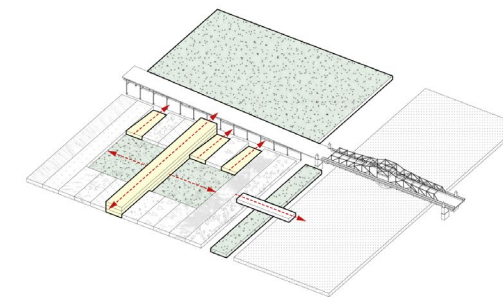
The major viaduct over 155th street with Macombs Dam Bridge establishes an important connections between Upper Manhattan and the Yankee stadium centered recreation infrastructures in the Bronx. Our project seeks to connect the larger scale to neighborhood walkability, using the post office site as an important intersection between modes. A more friendly and lively pedestrian experience is generated by the introduction of optimized walking routes passing through new and pre-existed open green spaces on the ground level and bridge linking across the Harlem River Drive. A total amount of 620 affordable housing and market rate units are designed to address the demand for affordable housing in Bradhurst. The program also advocates for enclosed and outdoor commercial spaces and various community service programs, such as after school, co-working and community library, integrated into the residential volumes to further facilitate an involving diversity of urban lifestyle in the neighborhood. These design strategies attempt to elaborate possible solutions for a local dynamic urban narrative. The post office site, therefore, is transformed into an 'URBAN BLENDER'.





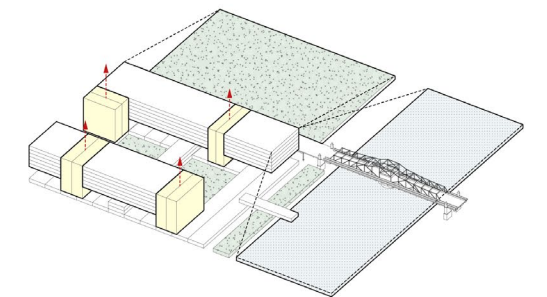
[Step 1]

Arrange different programs along the west-east direction to enable the pedestrian a better experience. Meanwhile the waterfront area is more connected to the north green space with an unexpected surprise.



[Step 2]

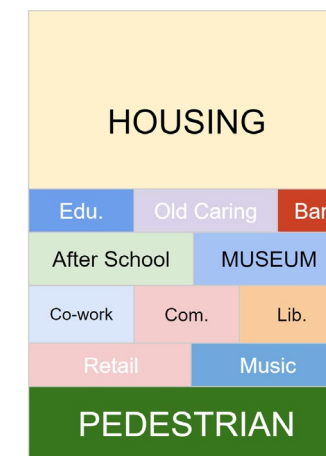
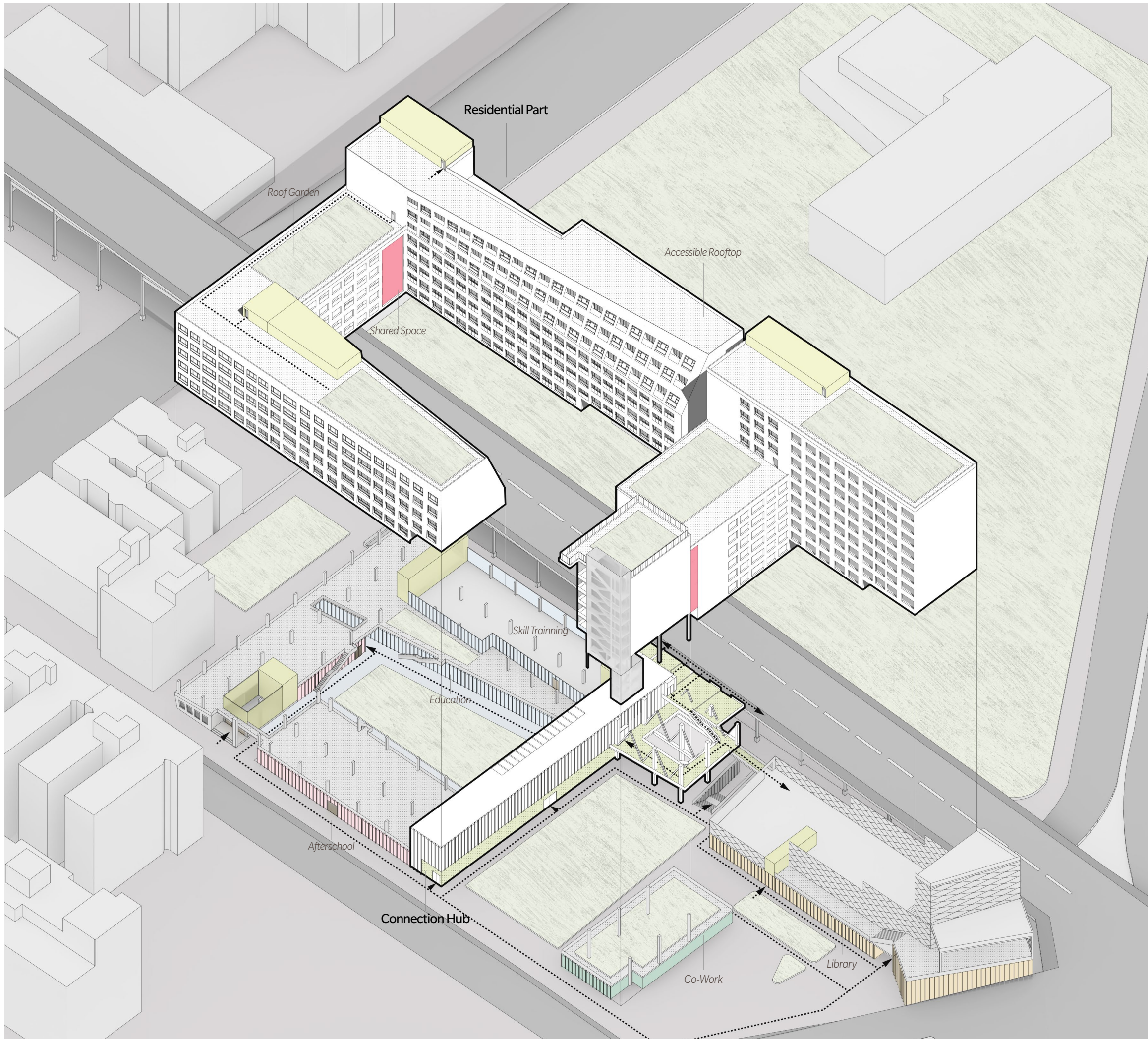
To deal with the topography in the area, several transportation tunnels are introduced into the site, and a centered gallery is designed as the main hub. Several different sized green spaces starting to form a system.



[Step 3]

A large quantity of housing units is designed above the ground floor. The diversified function also rises above the housing to bring the possibility of a social condenser. Meanwhile, the housing is hovering above the viaduct to better view and sunlight.

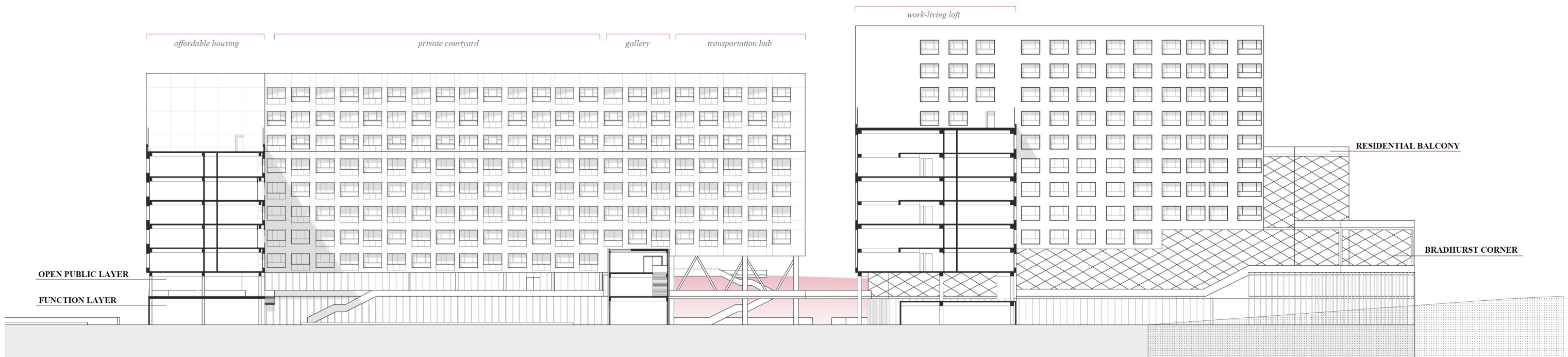
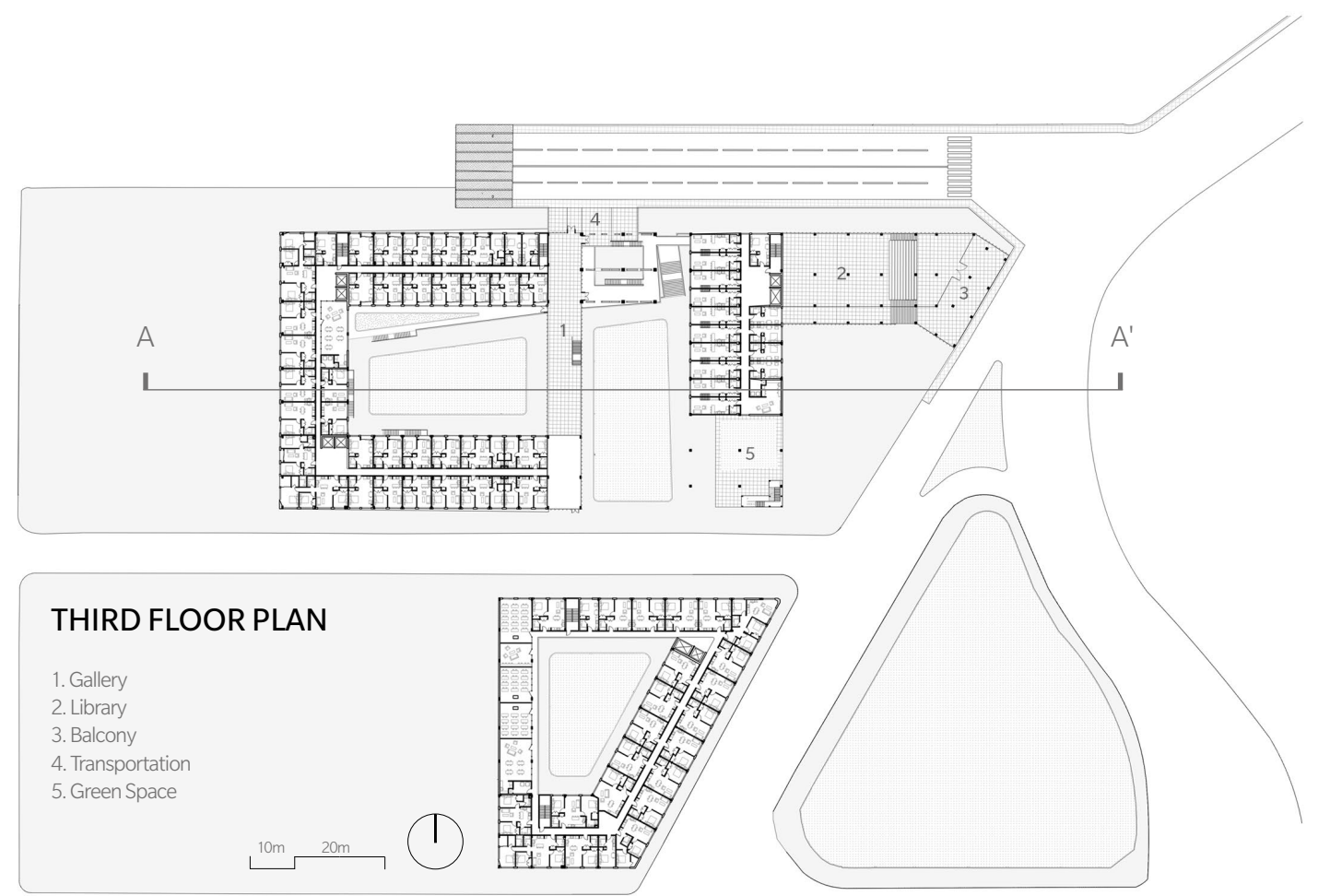
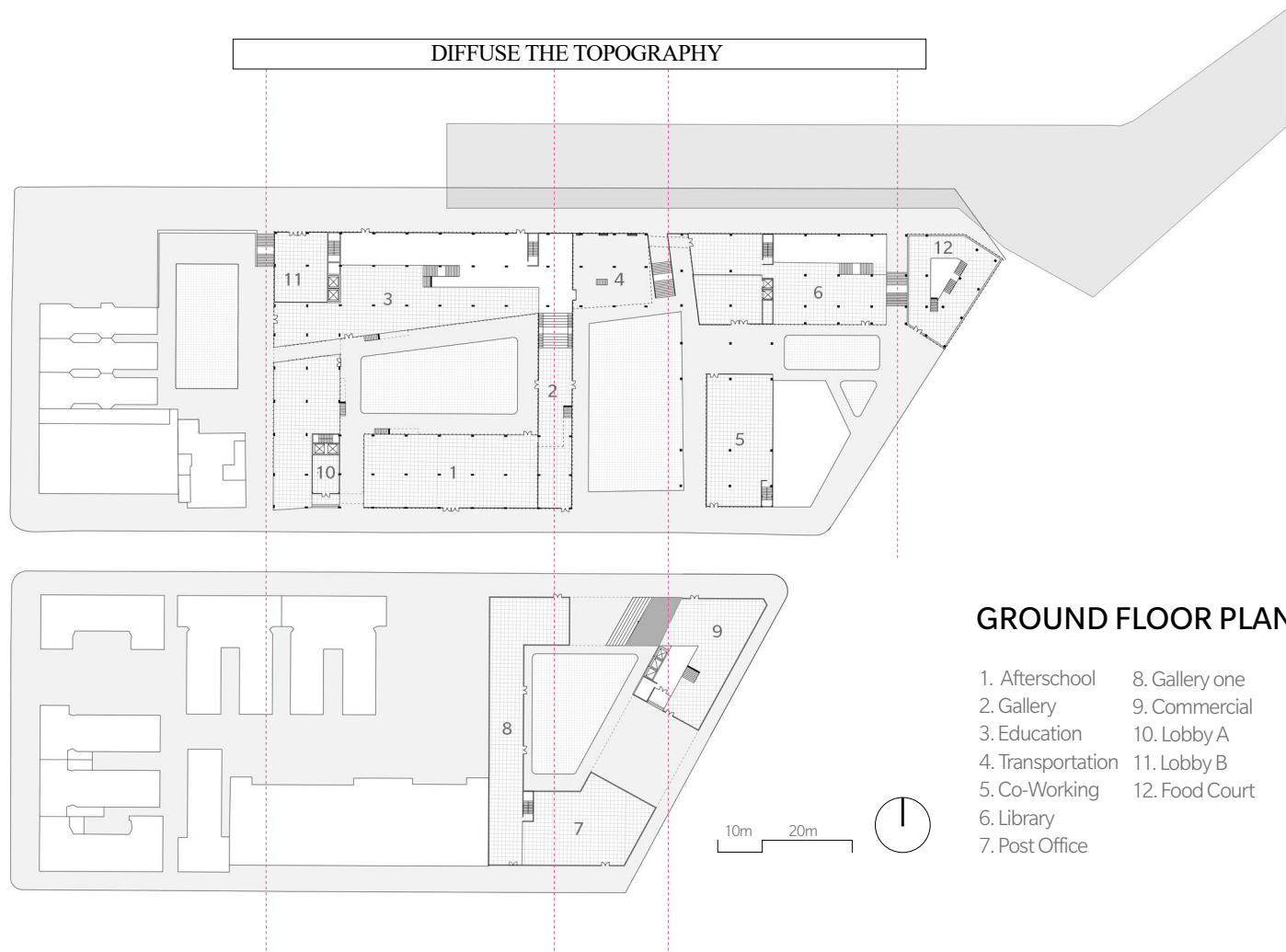




### Housing+Connection+Function

A Total 660 units with different layouts, different family structure are assembling this 'Social Blender'. In order to keep the residential part private, the housing is designed at the top with various function on the bottom. These different functions are orgnized by two courtyards, one is public, the other is rather private. Moreover, a connction hub is arranged at the center of the layout which functions not only as transportation towards the north of the viaduct, but also the gallery of the community. With quite amount of pedestrian going through the hub, it has the potential to become the most important connection in the area.

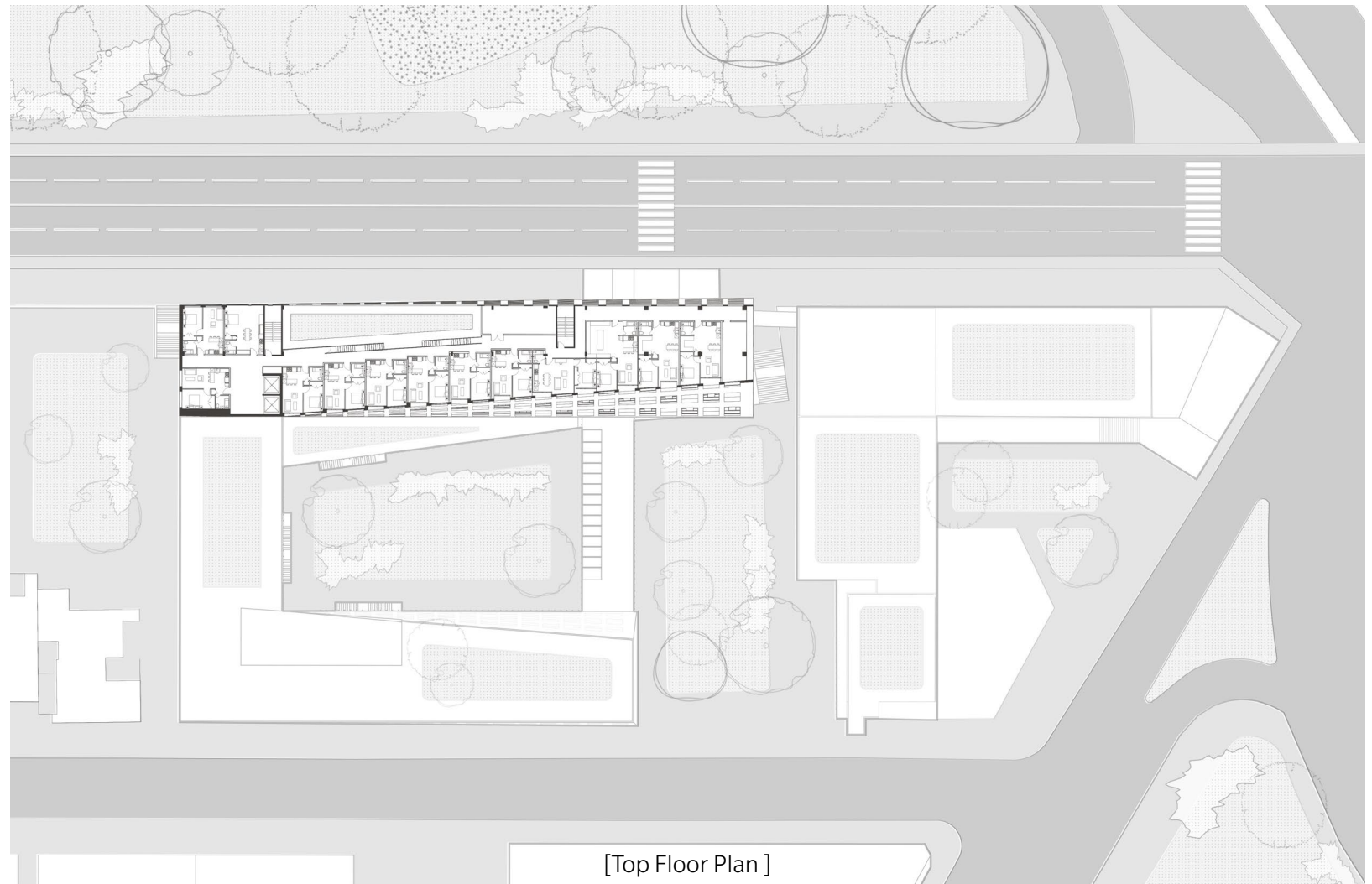




**A-A' SECTION**

A-A' section aims to illustrate the relationship among housing, courtyard, public function, gallery, and the viaduct. With the gallery and transportation hub arranged in the center, housing is laid out above, starting from the third level.





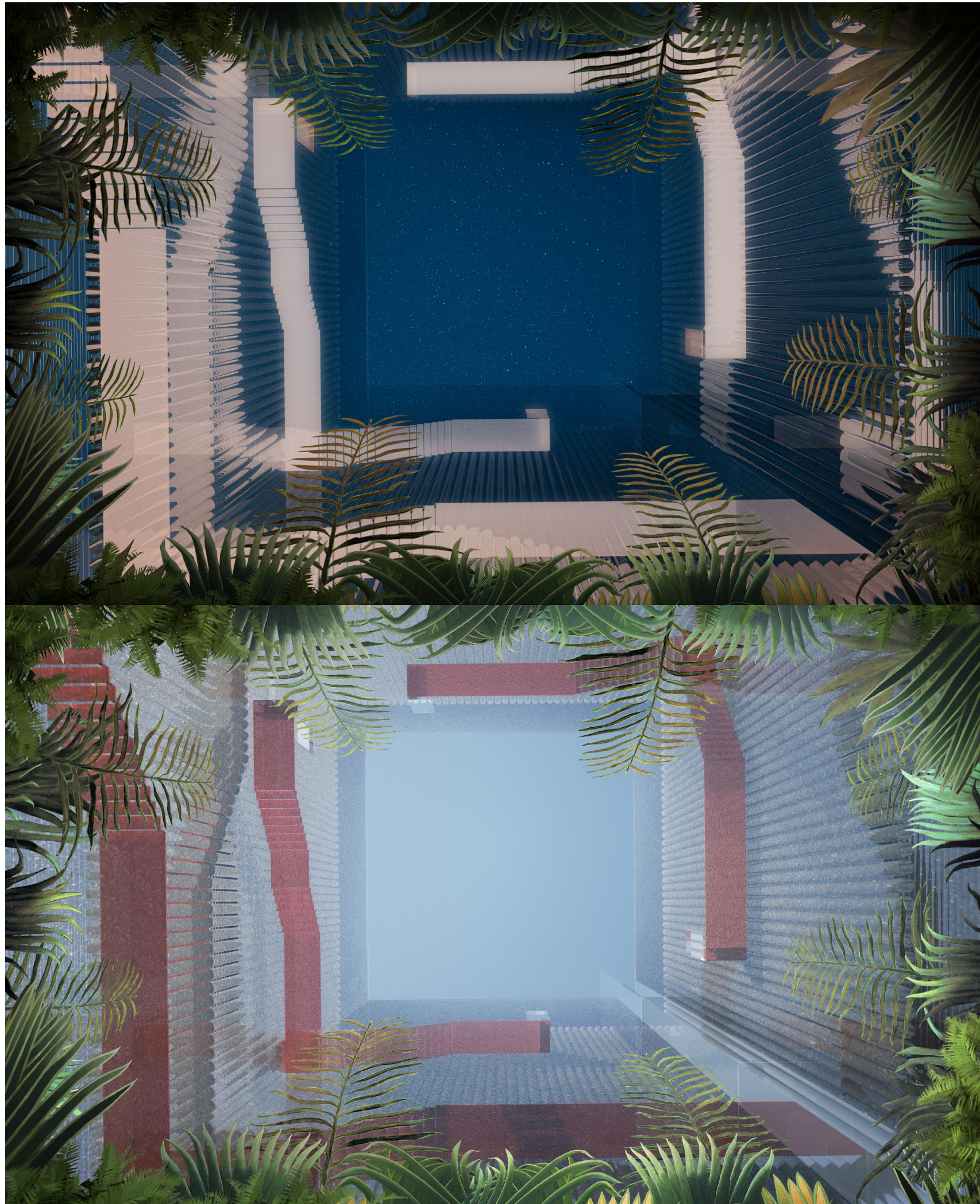
The top-level floor plan is highly diversified since the transformation of the facade is creating a setback. All units are different from each other to create a floor with varying structures of family that is organized by a single corridor with a glass facade towards the sky garden on the lower level, which provides residents with a pleasant landscape.

### Housing Typology

- [1] Shared Units: used by all residents
- [2] Studio A: for a family with 1-2 members
- [3] 2 Bedroom: for a family with 3-4 members
- [4] 2 Bedroom A: for a family with 3-4 members
- [5] Studio B: for a family with 1-2 members
- [6] 1 Bedroom: for a family with 2-3 members
- [7] Work-Living Studio: provide Bradhurst residents with the option to work from home, a response to the current globalized pandemic







## 03 TELL US YOUR SECRETS...

AN INSTALLATION PROJECT IN BRYANT PARK

*Individual Work*  
*Spring. Columbia GSAPP*  
*Instructor: Stephen Cassell, Anne Barrett*  
*Location: Bryant Park, New York City*  
*Architectural Design - Installation*  
*Project Duration: 12 Weeks*

Do you have urges to tell your secrets to somebody and wish without revealing yourself?

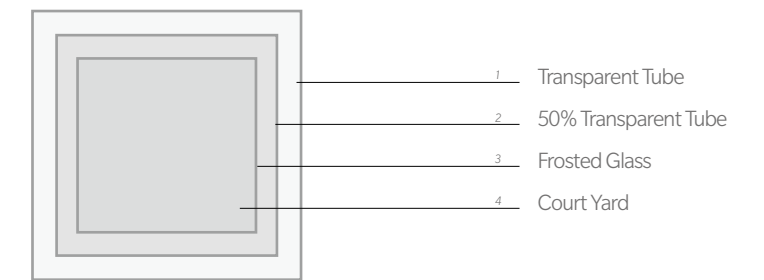
Do you want to hear others deepest secrets?

Having a secret can feel exhausting. In fact, it is exhausting. We want to confide and get the secrets off our chests, but we also want to protect ourselves and our relationships. That conflict is what wears us down. So a box for secret telling is designed at the center of New York City - Bryant Park, Your figure will be blurred by the special facade, and your voice will be blended with others, so nobody will know your true identity. And if you just want to hear others secrets, you can just walk into the central courtyard, and listen to others deepest secrets...

...

...





Step 1: The most inner Layer, court yard for listening to others' secrets. Also is the entrance to the staircase. After you went on the staircases, you can go into the central core for choosing your next step.

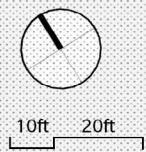
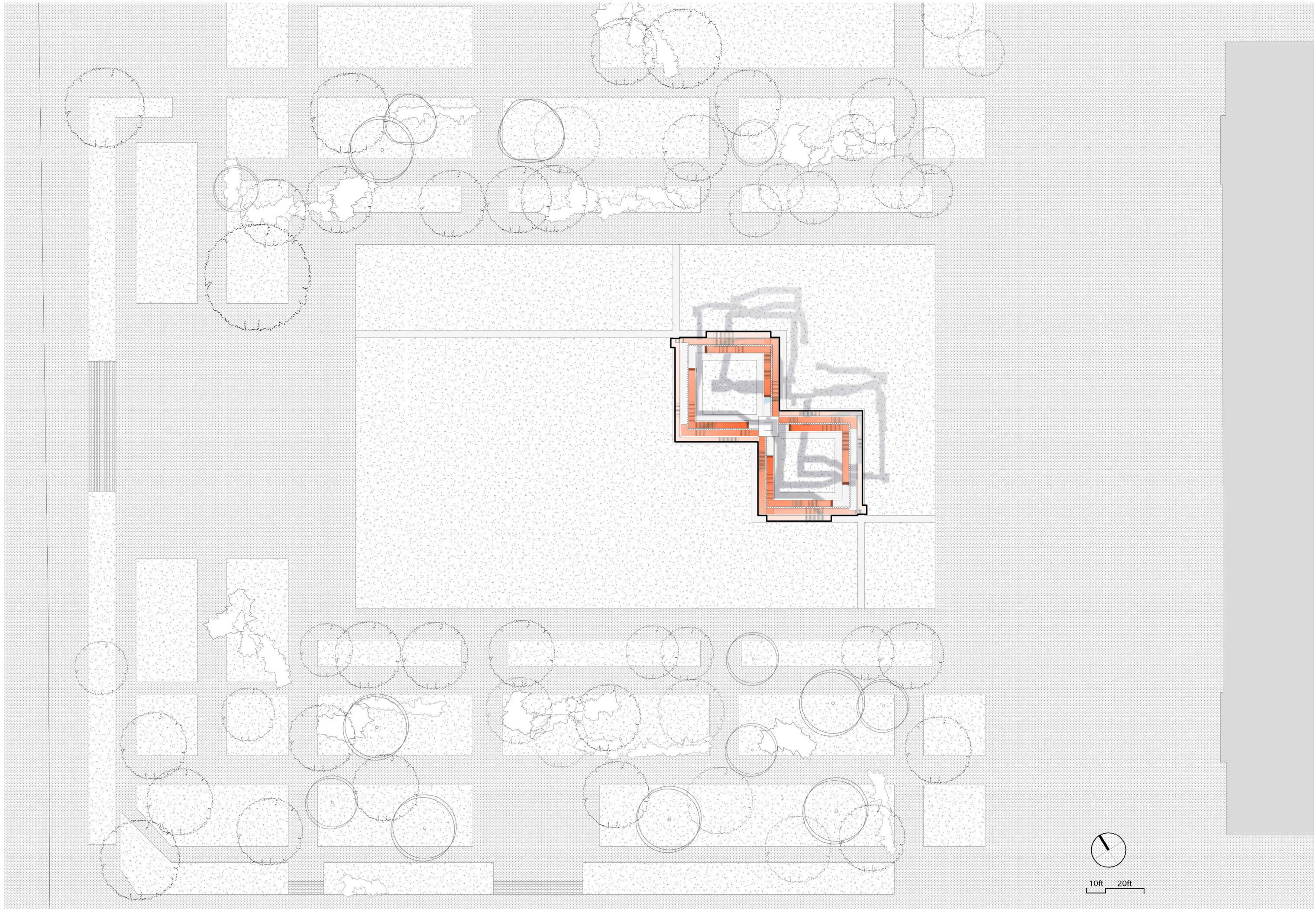
Step 2: The 3rd layer is made of flat frosted glass. And on each side of the layer, there is a bench, for the participants to tell their secrets. And the portion of glass by the bench is clear, meanwhile there is a speaker and a recorder which will enlarge your voice to the courtyard, and also record it as a track that will be blended into the mixtape of the loop playing.

Step 3: The 2nd layer is made of 50% transparent cylinders. And this layer is designed for people to establish their words and mentality for secret telling.

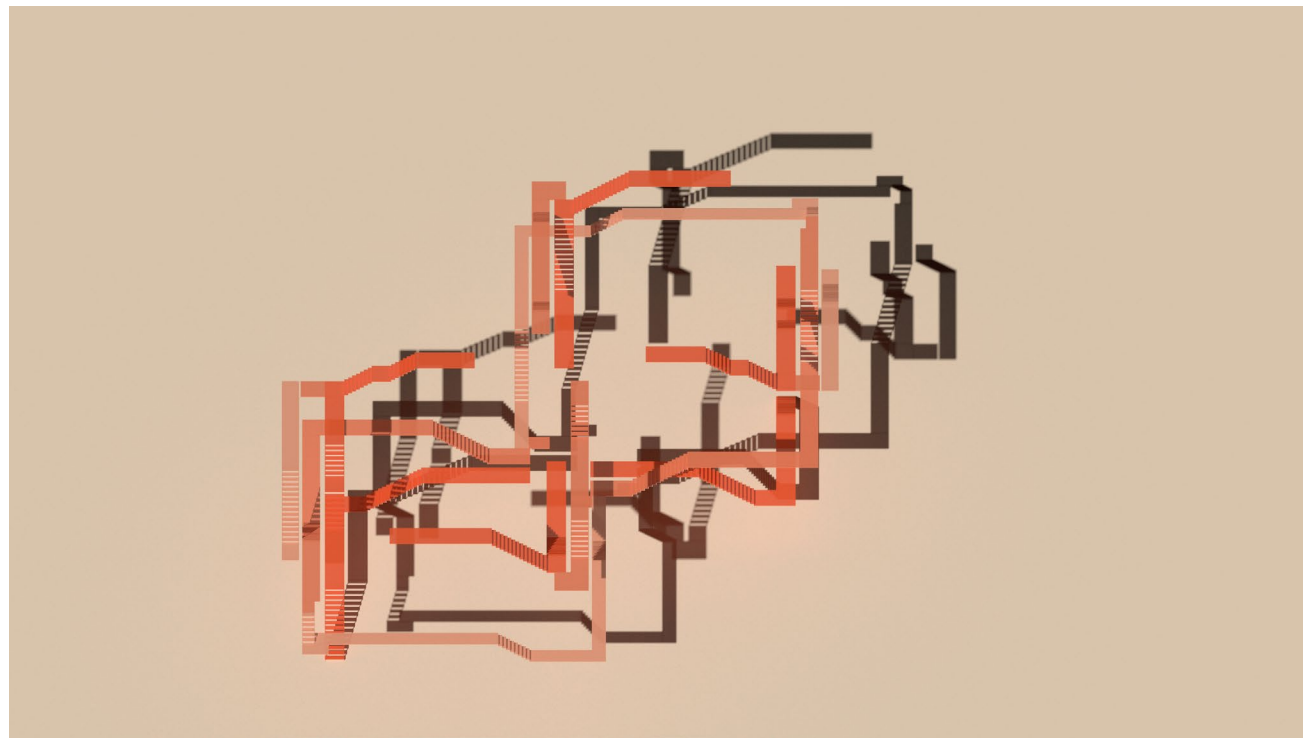
Step 4: The 1st layer is made of transparent cylinders to distort the image of participants, and also to let the people from outside see the moving figure inside.

Step 5, 6: Together, they form the box of secrets, and these layers have different effects according to the sunlighting situation during the day.

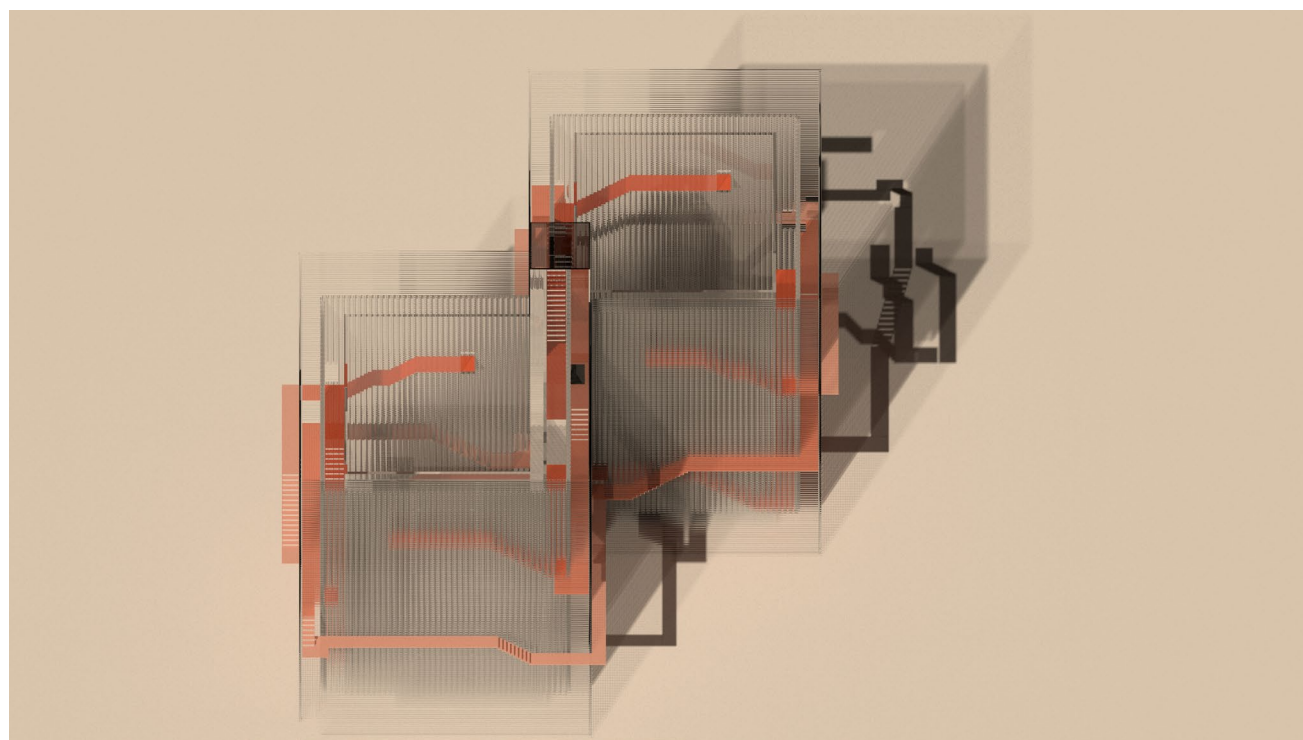




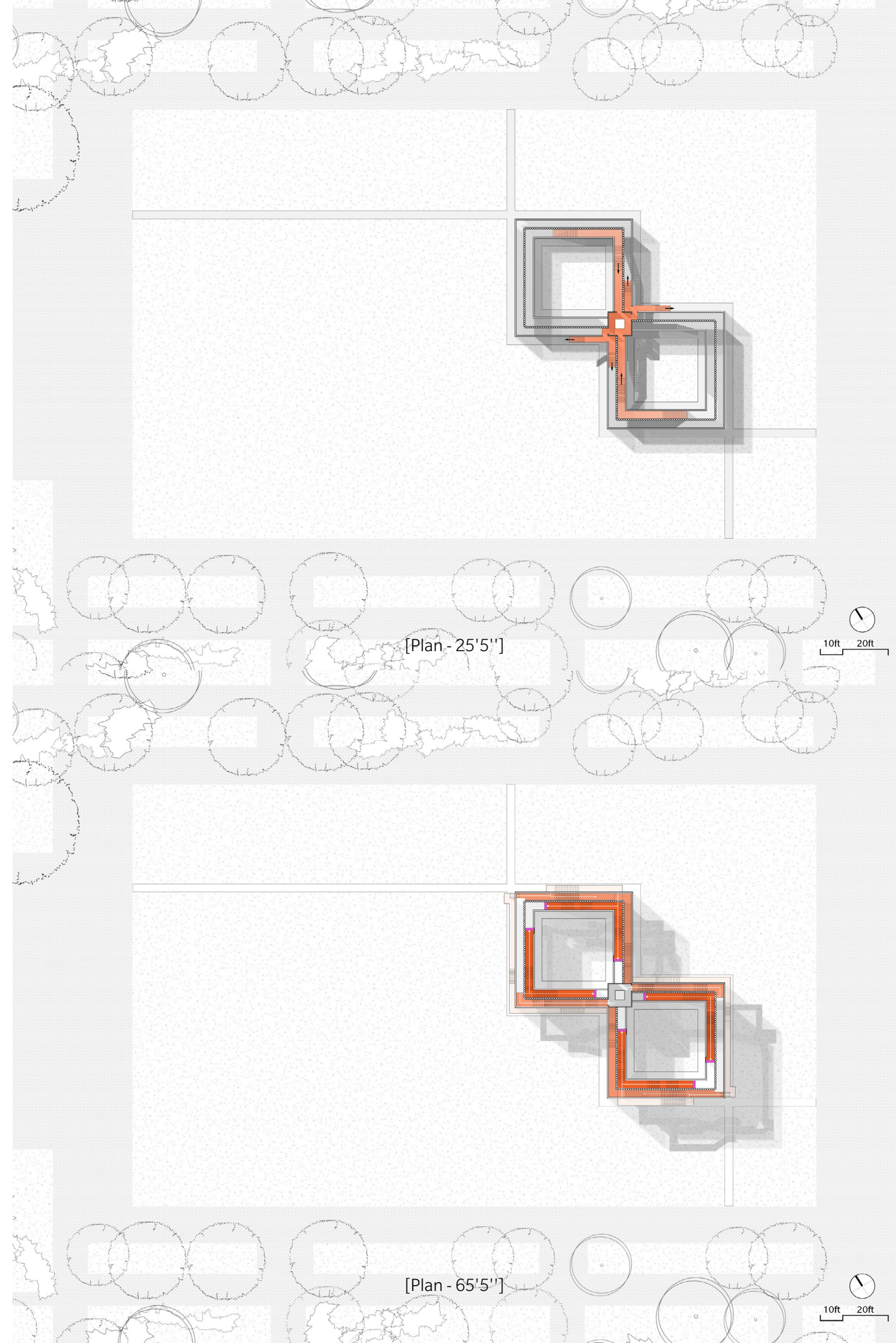




[Stair System]



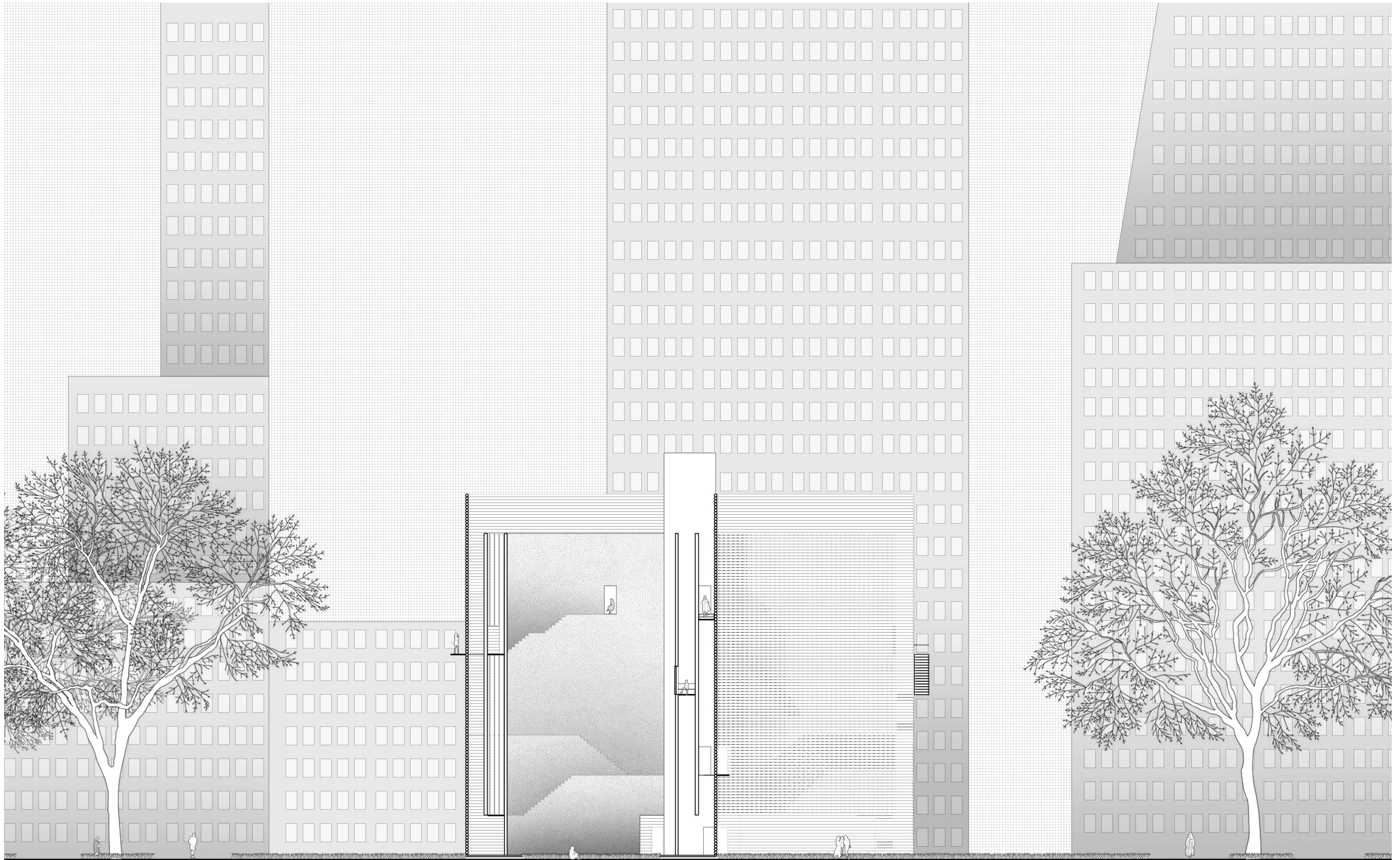
[Combined]



[Plan - 25'5"]

[Plan - 65'5"]





[Section - Looking From Ease]