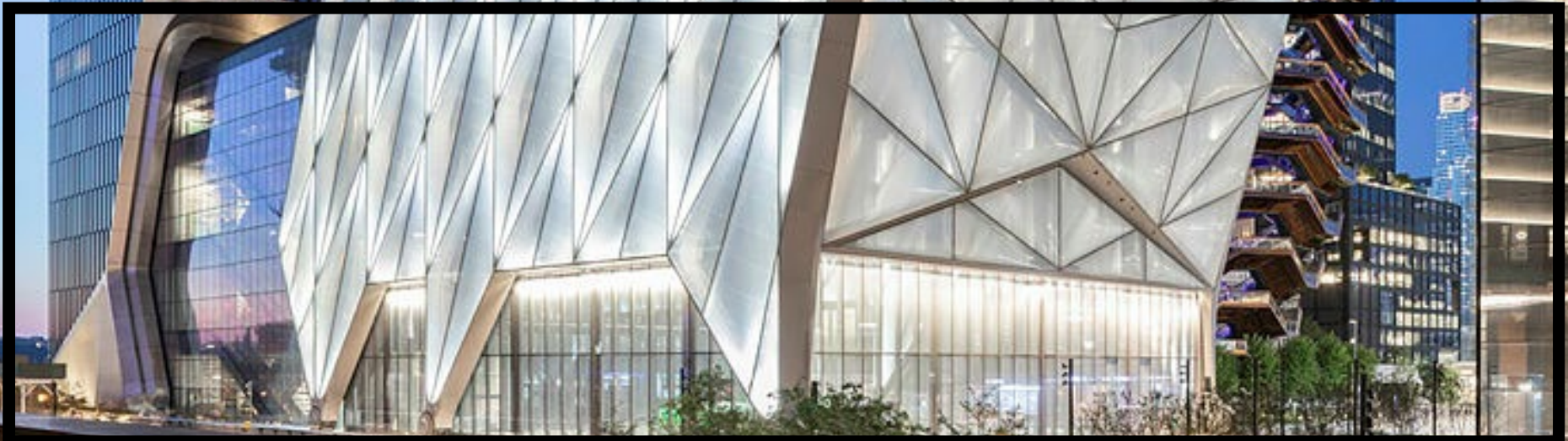


THE SHED



THE SHED

---

# WELCOME TO THE SHED

---

## A New Arts Center for the 21st Century

---

**In April 2019**, The Shed opened its doors guided by the belief that by producing and welcoming innovative art and ideas, across all forms of creativity, we could build a shared understanding of our rapidly changing world and a more equitable society.

Today, The Shed invites other cultural organizations, educational institutions, and like-minded entities to join us as we carry on our work in a world reshaped by the pandemic. With our proven record as a center for new talent, ideas, and cultural experiences—and our highly adaptable, one-of-a-kind Bloomberg Building, designed by Diller Scofidio + Renfro, Lead Architect, and Rockwell Group, Collaborating Architect—we are ready to take part in our city’s recovery.

When you choose The Shed for a special event, you contribute directly to our efforts to shape a better future for us all.

---

# COVID-19

---

## Our Commitment to Health & Safety

---



Thanks to the adaptability of our building's spaces, we are ready to welcome private events that safely and responsibly comply with local guidelines. With the well-being of our guests as our top priority, we are taking extra precautions to create a safe environment for all who enter our building while also providing an extraordinary experience.

**ENHANCED SANITATION & SAFETY PROTOCOLS**  
We have implemented strict sanitation and cleanliness protocols in compliance with the CDC and local health authorities.

**CLEAN & COMPLIANT SPACES**  
Our active safety programs include sanitized cleaning before, during, and after events.

**TRAINED STAFF WITH PPE GEAR**  
Our staff are properly trained and equipped with PPE gear and a pre-shift health evaluation in accordance with local health regulations.

**REDUCED CAPACITY & SOCIALLY DISTANCED FLOOR PLANS**

We have adjusted capacities and floor plans to comply with local government regulations for social distancing.

**SAFE FOOD & BEVERAGE HANDLING**

We offer service options for dedicated food and beverage attendants with protective guards or plated meals.

**POSTED SAFETY SIGNAGE & TRAFFIC MANAGEMENT**

Prominent safety and cleanliness signage throughout the venue, including floor decals, guides visitors in social distancing.

---

# SPACES

---

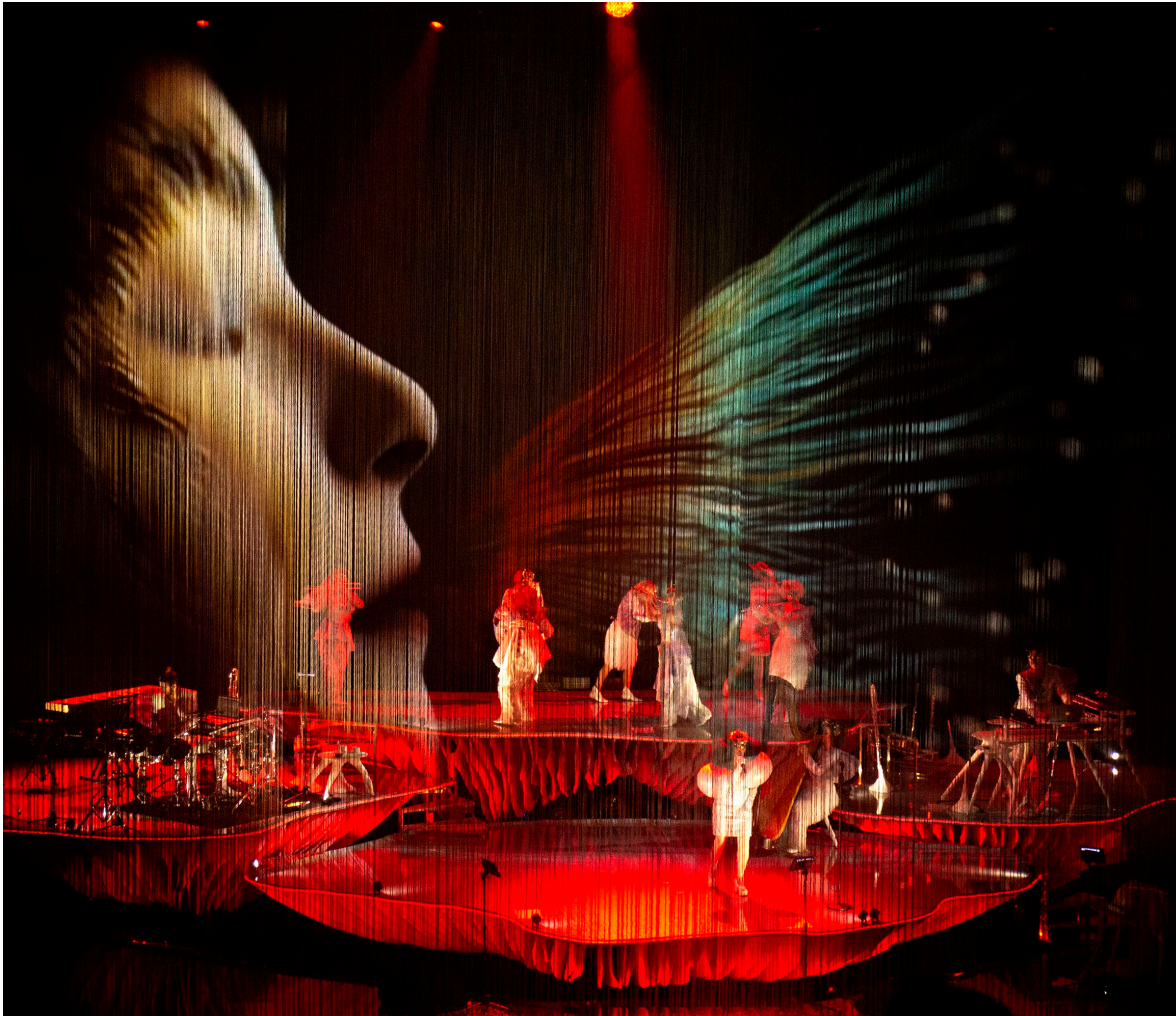
---

# SPACES

---

## The McCourt

---



The Shed's signature space, The McCourt, is an 18,000-square-foot venue for gala events, fashion shows, award ceremonies, performances, and other large-scale events. It can accommodate a seated audience of 900 and a standing audience of 1,200. The ceiling, which serves as a theatrical deck, allows for sound and light control across the entire area. The McCourt is a responsive space that can easily adapt to meet city and state health and safety guidelines.

**Dimensions: 139 x 130'**

**Ceiling Height: 110'**

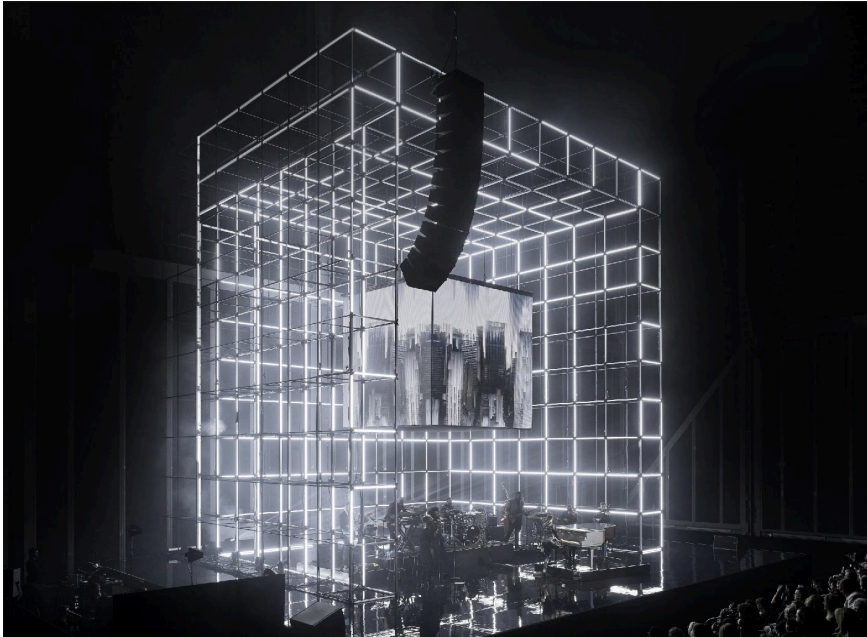
**Area: 18,000 SF**

**Reception: 1,200\***

**Seated Dinner: 900\***

\*For the 2020–21 season, reduced capacities apply; all event plans must meet CDC and local safety guidelines.

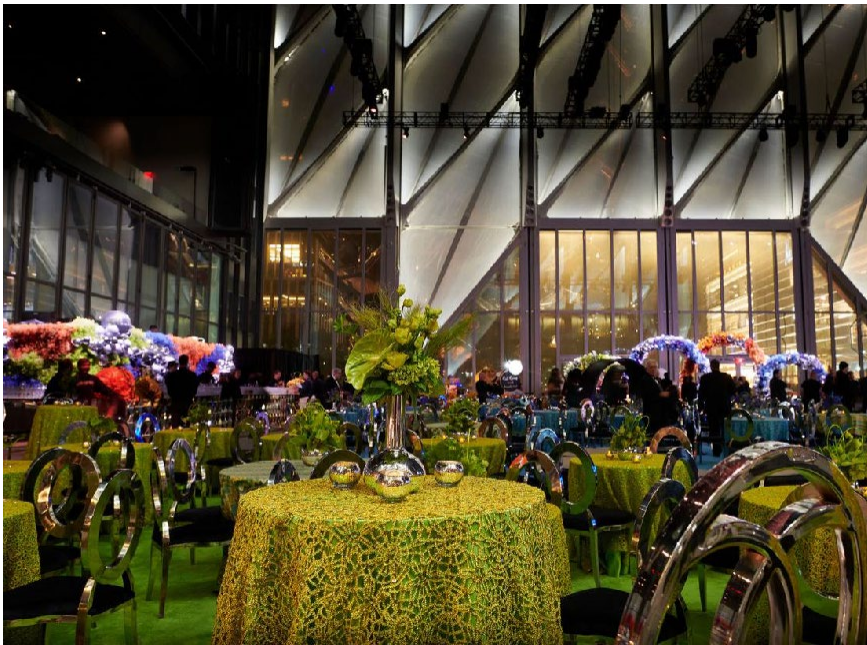
Björk's *Cornucopia* in The McCourt. Photo: Santiago Felipe.



Private event. Courtesy 4Wall.



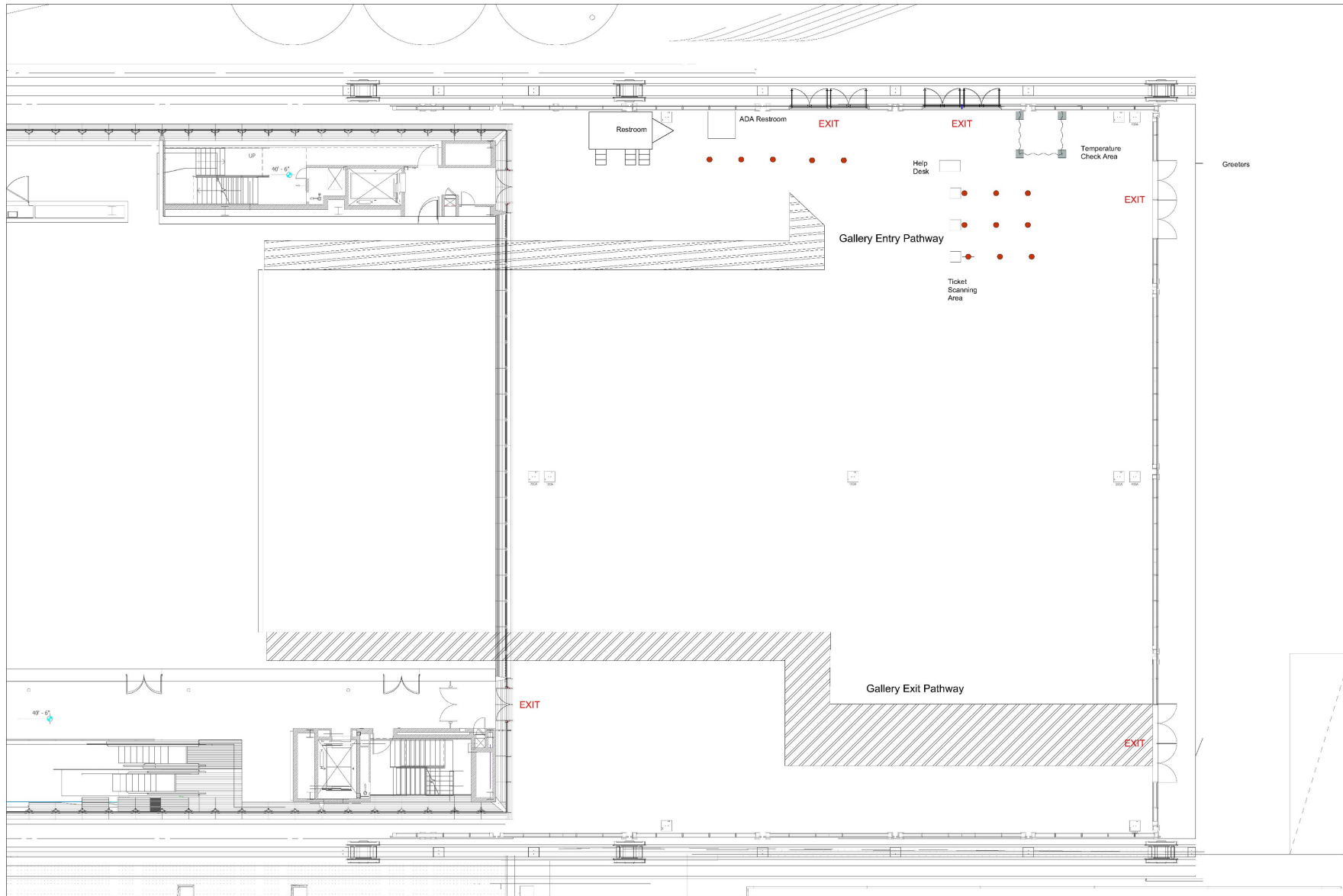
Google Hardware launch, October 2019. Photo: Antonio Villa-Boas.



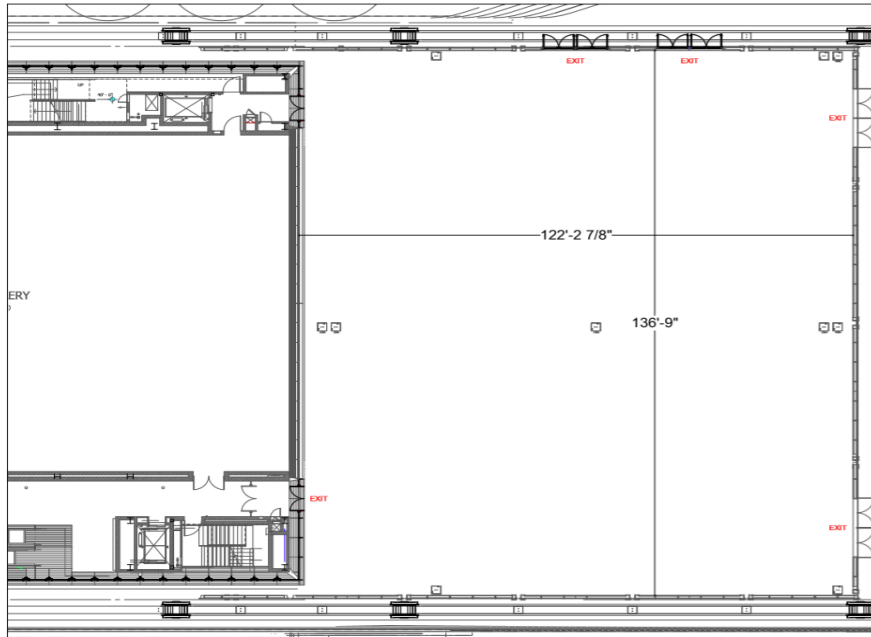
Private event in The McCourt. Photo: Mark Scardilli.



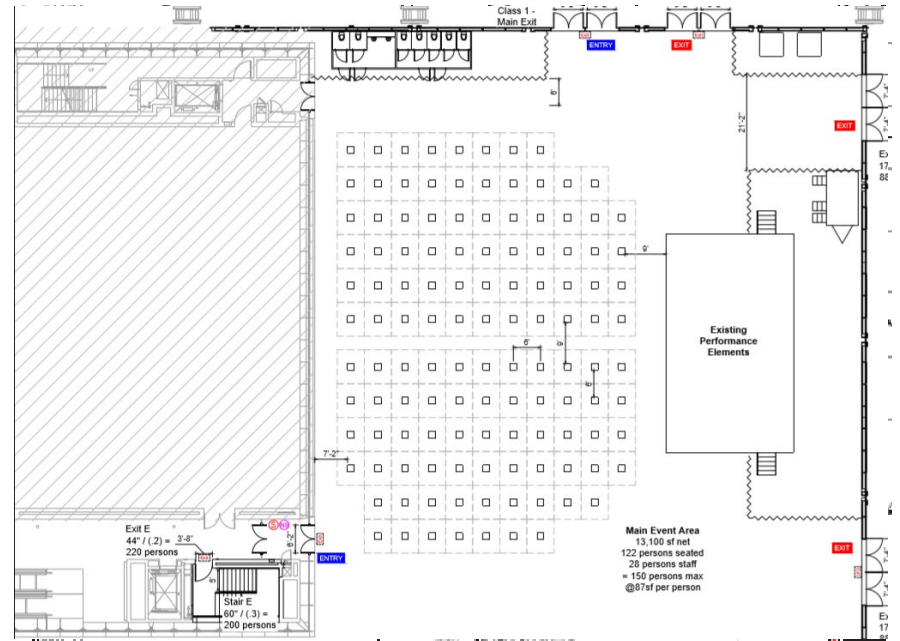
Nike Olympic launch, 2020. Photo: Masato Onoda/WWD.



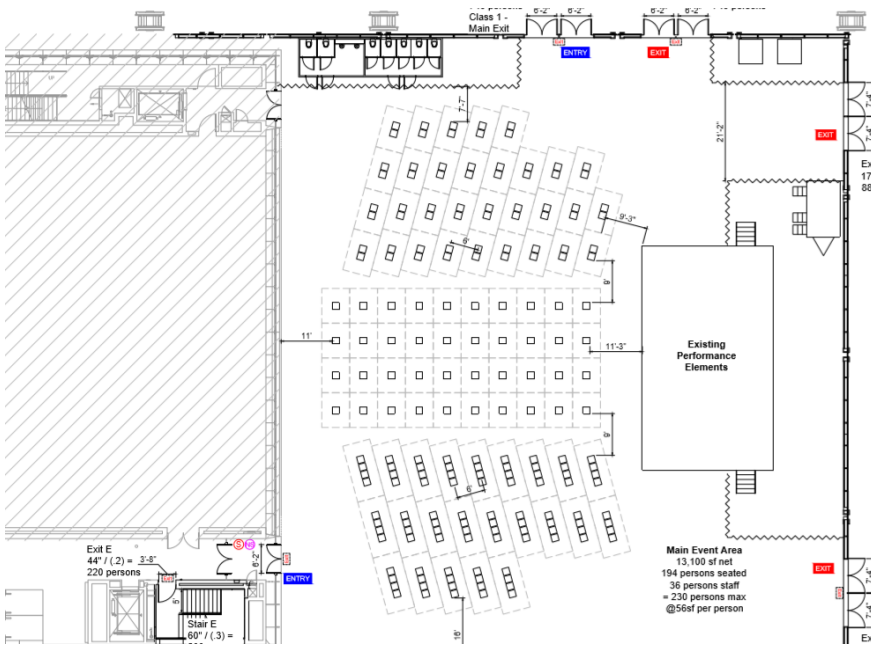
The McCourt Fall 2020 Reopening Plan



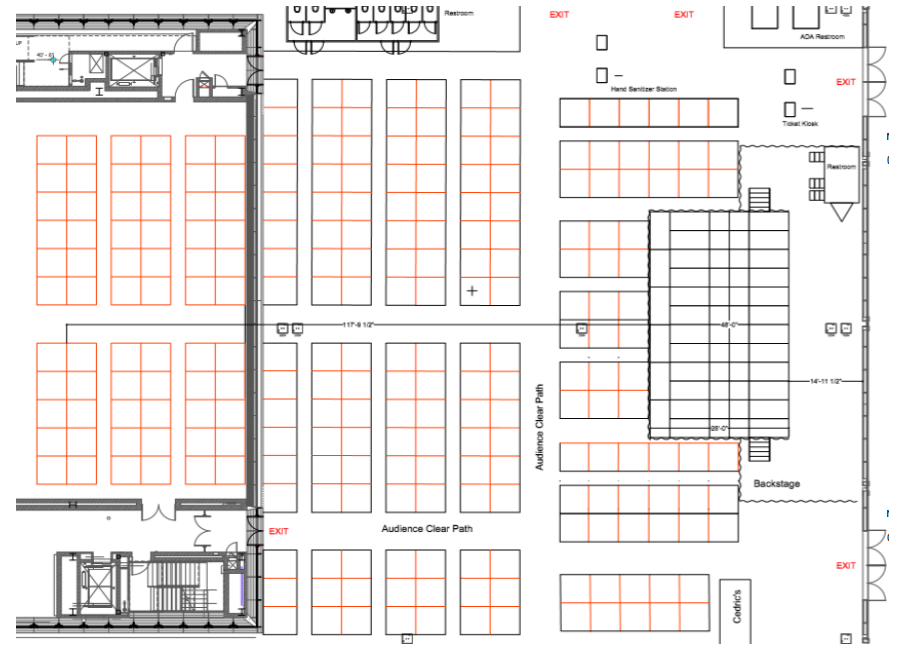
The McCourt clean with space dimensions.



The McCourt stage, reduced capacity presentation seating for 150.



The McCourt stage, reduced capacity seating for 230.



The McCourt plan, reduced capacity for 249.



---

# SPACES

---

## The Tisch Skylights

---



The Shed's top-floor event space opens to views of the city through two expansive skylights and north- and south-facing windows. The space can be partitioned with a wall, and the windows and skylights are fitted with blackout options for daytime audiovisual needs. This space can transform for meeting and office environments, dinners, press events, conferences, and personal receptions.

**Dimensions: 99 x 99'**

**Ceiling Height: 10'**

**Area: 9,503 SF**

**Reception: 600\***

**Seated Dinner: 450\***

\*For our 2020–21 season, reduced capacities apply; all event plans must meet CDC and local safety guidelines.



A client meeting in The Tisch Skylights. Photo: Ben Gabbe/Getty Images.



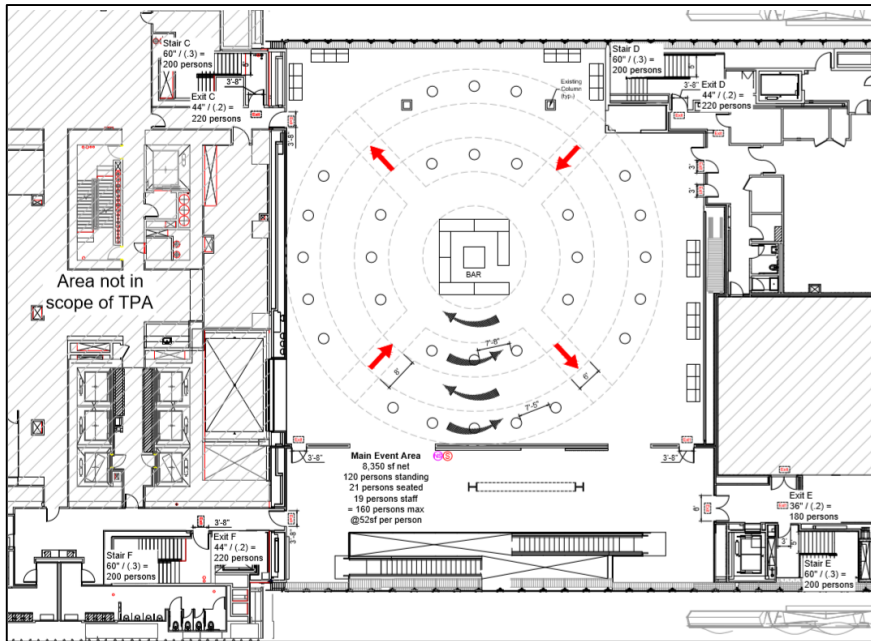
A yoga class in The Tisch Skylights. Photo: Gina Dyches.



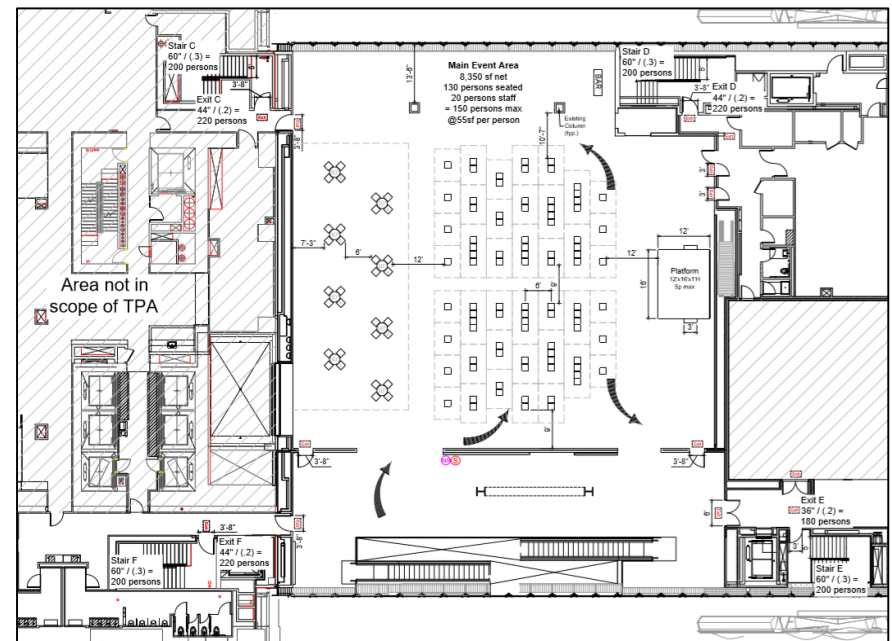
The Shed's summer party in The Tisch Skylights. Photo: Walter Wlodarczyk.



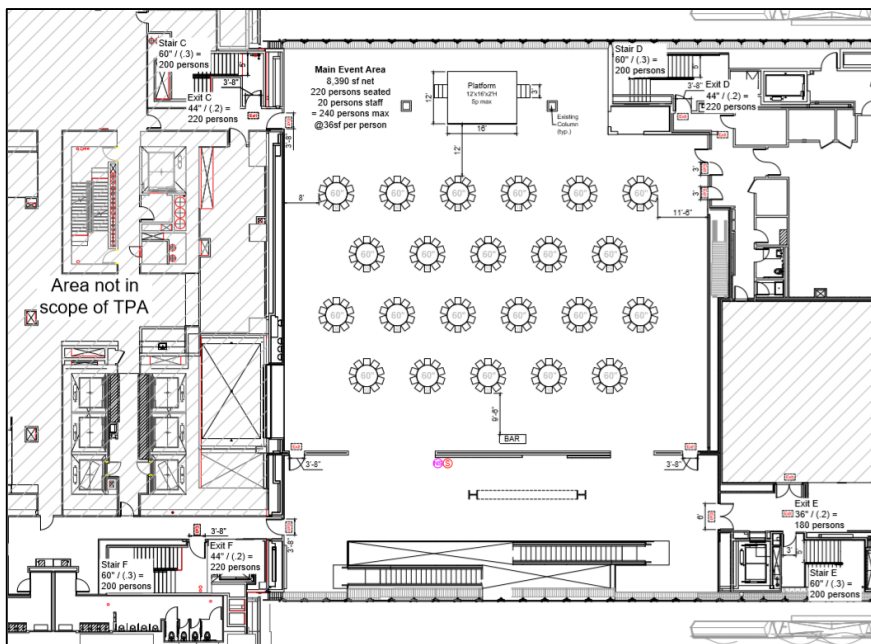
A Shed seated dinner in The Tisch Skylights. Photo: Scott Rudd Events.



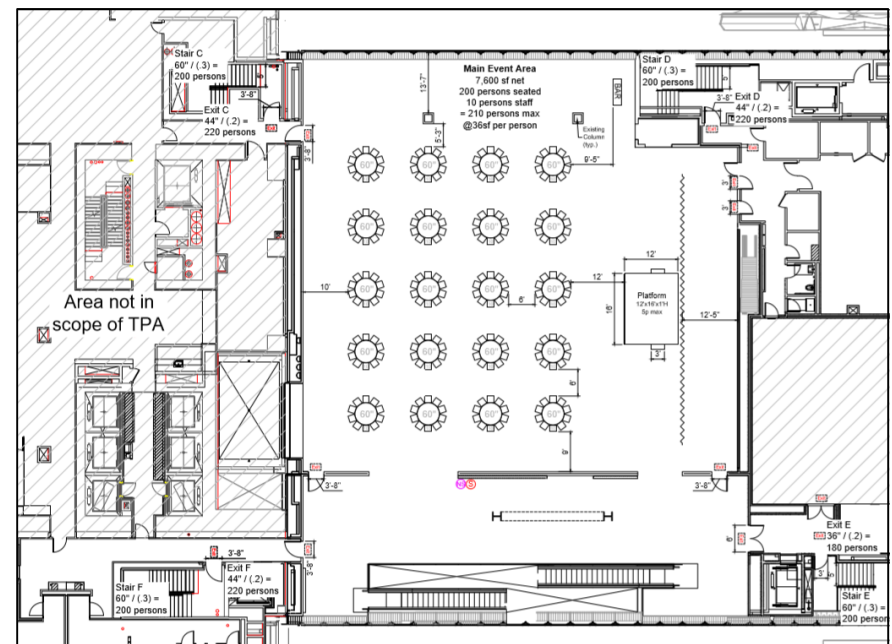
The Tisch Skylights reduced capacity standing reception for 160.



The Tisch Skylights reduced capacity presentation for 150.



The Tisch Skylights reduced capacity table seating for 240.



The Tisch Skylights reduced capacity table seating for 210.

---

# SPACES

---

## The Griffin Theater

---



The Shed's Kenneth C. Griffin Theater is an inviting space that can be transformed into two smaller spaces to create more intimate event settings. The Griffin Theater's flexible design can accommodate events of all types, including those that require a private and even soundproof environment.

**Dimensions: 140 x 84'**  
**Ceiling Height: 22'**  
**Area: 11,760 SF**  
**Maximum Capacity: 500\***  
**Seated Dinner: 500\***

\*For our 2020–21 season, reduced capacities apply; all event plans must meet CDC and local safety guidelines.

Arca's *Mutant;Faith* in The Griffin Theater. Photo: Annie Forrest.



Theater seating in The Griffin Theater. Photo: Timothy Schenck.



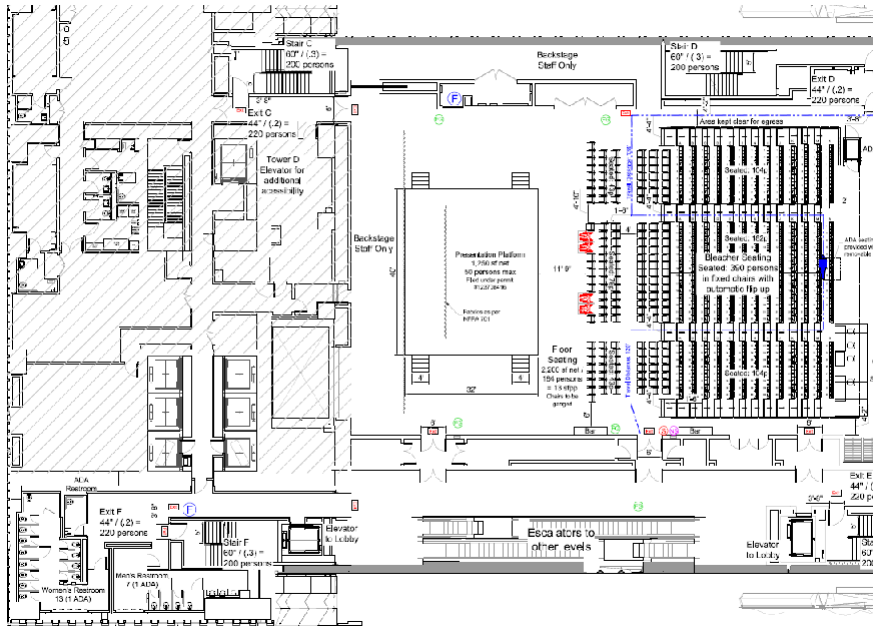
Maze performed in The Griffin Theater. Photo: Kate Glicksberg.



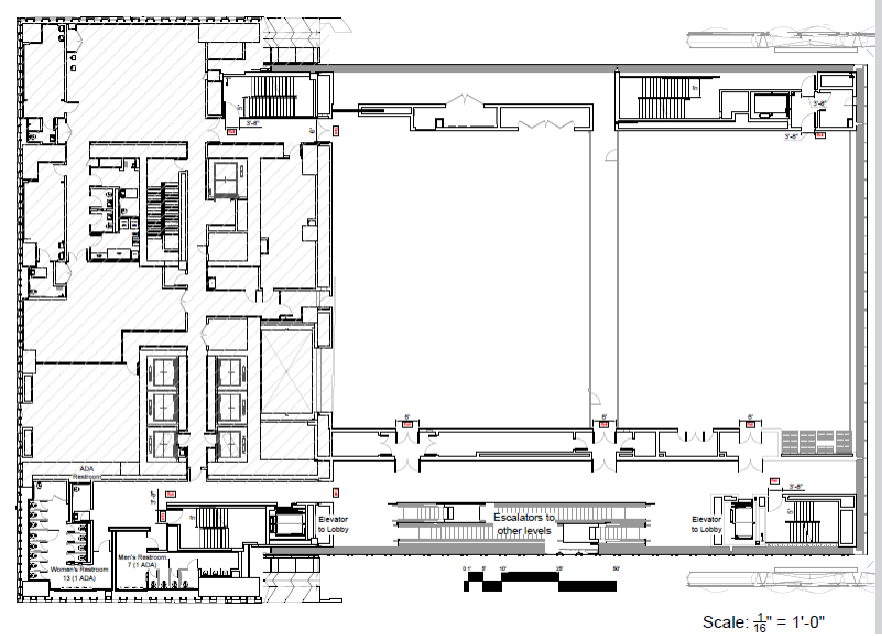
Yulan Grant's *Buss Demon Choat* in The Griffin Theater.  
Photo: Christopher Garcia Valle.



Theater seating in the Griffin Theater. Photo: Christopher Garcia Valle.

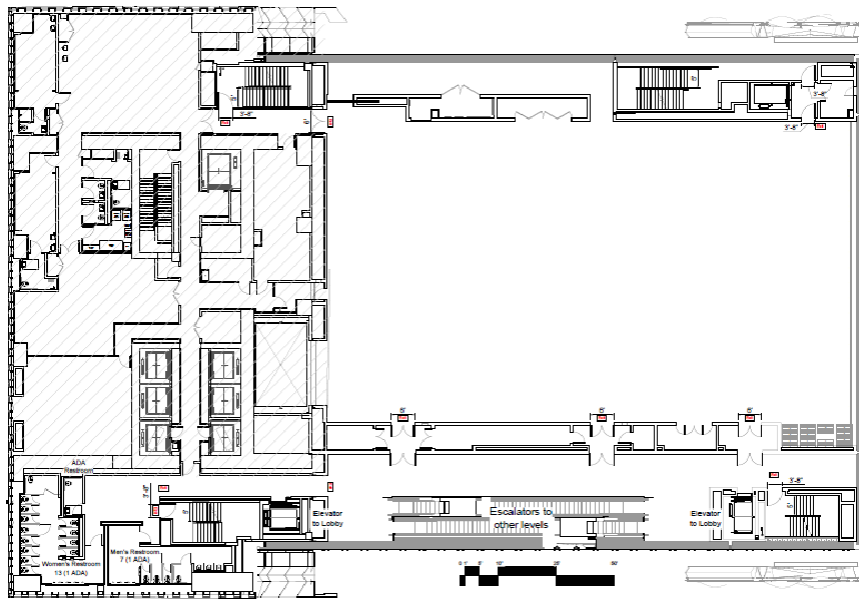


The Griffin Theater stage and bleacher seating for 400.



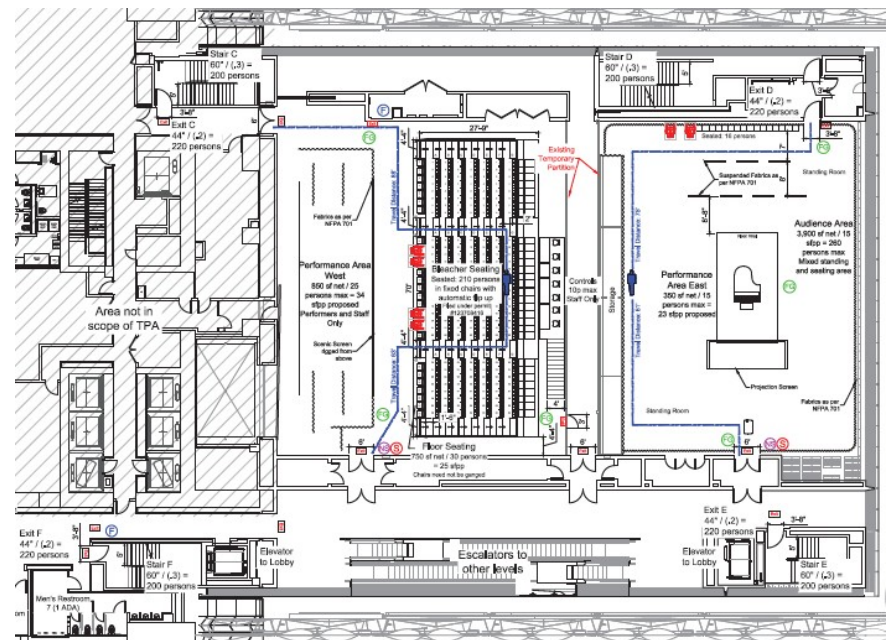
Scale:  $\frac{1}{16}'' = 1'-0''$

The Griffin Theater divided into two performance spaces by a pressure wall.



Scale:  $\frac{1}{16}'' = 1'-0''$

The Griffin Theater's full space.



The Griffin Theater stage with bleacher seating for 250.

# SPACES

## Galleries



The Shed's column-free, museum-quality galleries on the second and fourth levels provide large, open spaces for events. The galleries can also provide for additional opportunities for engagement during events. Please refer to our 2020–21 commissions to become familiar with what will be on view.

**Dimensions: 140 x 84'**

**Ceiling Height: 19'**

**Area: 11,760 SF**

**Maximum Capacity: 431\***

**Exhibition: 431\***

\*For our 2020–21 season, reduced capacities apply; all event plans must meet CDC and local safety guidelines.

*Agnes Denes: Absolutes and Intermediates* in the Level 2 Gallery. Photo: Dan Bradica.



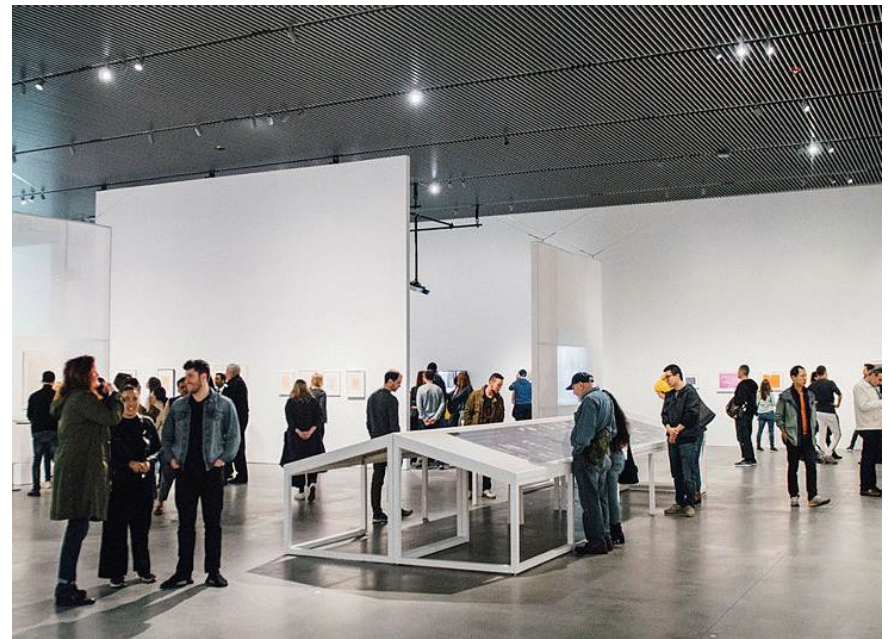
Work by Tony Cokes in *Collision/Coalition* in the Level 4 Gallery. Photo: Scott Rudd Events.



*Reich Richter Pärt* in the Level 2 Gallery. Photo: Ryan Kobane/BFA.com.



A summer exhibition opening party in the Level 2 Gallery. Photo: Scott Rudd Events.



Meet at The Shed in the Level 2 Gallery. Photo: Andy Jackson.



# SPACES

## Overlook



Adjacent to the Level 4 Gallery with a dramatic view into the vast McCourt, The Overlook is one of The Shed's most flexible spaces. When configured with theatrical seating, The Overlook can accommodate audiences of up to 300 for film screenings, lectures, and panel discussions. By lifting the glass partition that divides The Overlook from The McCourt, The Shed can expand The McCourt's capacity, providing an ideal space for donors, artists, and other special guests. The Overlook has proven to be an elegant room for special events, perfect for cocktail receptions for up to 300 people and seated dinners for up to 200.

**Dimensions: 85 x 56'**  
**Ceiling Height: 19'**  
**Area: 4,760 SF**  
**Maximum Capacity: 350\***  
**Seated Dinner: 250\***

\*For our 2020–21 season, reduced capacities apply; all event plans must meet CDC and local safety guidelines.

The Shed's Artistic Director's Dinner in the Level 4 Overlook. Photo: Scott Rudd Events.



The Shed's Artistic Director's Dinner in the Overlook. Photo: Scott Rudd Events.



Soundtrack of America: Duckwrth. Photo: Lawrence Sumulong



Meet at The Shed with a view of the Level 4 Overlook from The McCourt. Photo: Walter Włodarczy.



Yanina Valdivieso and Vanessa Bergonzoli's film *Cinta Amarilla* in the Overlook. Photo: Lily Wan.

---

# SPACES

---

## Lobby

---



The Shed's Lobby is a welcoming space that opens to guests as they arrive at the street-level entrance on West 30th Street. It features a large glass skylight that allows guests to peer up to the High Line above and is adjacent to Union Square Hospitality Group's **Cedric's at The Shed**.

**Dimensions: 118 x 68'**  
**Ceiling Height: 10'**  
**Area: 7,317 SF**  
**Capacity: 449\***  
**Notes: Full Lobby (includes café area)**

\*For our 2020–21 season, reduced capacities apply; all event plans must meet CDC and local safety guidelines.

The Shed's Lobby. Photo: Mark Wickens for the *New York Times*.



The Shed's Lobby. Photo: Walter Włodarczyk.



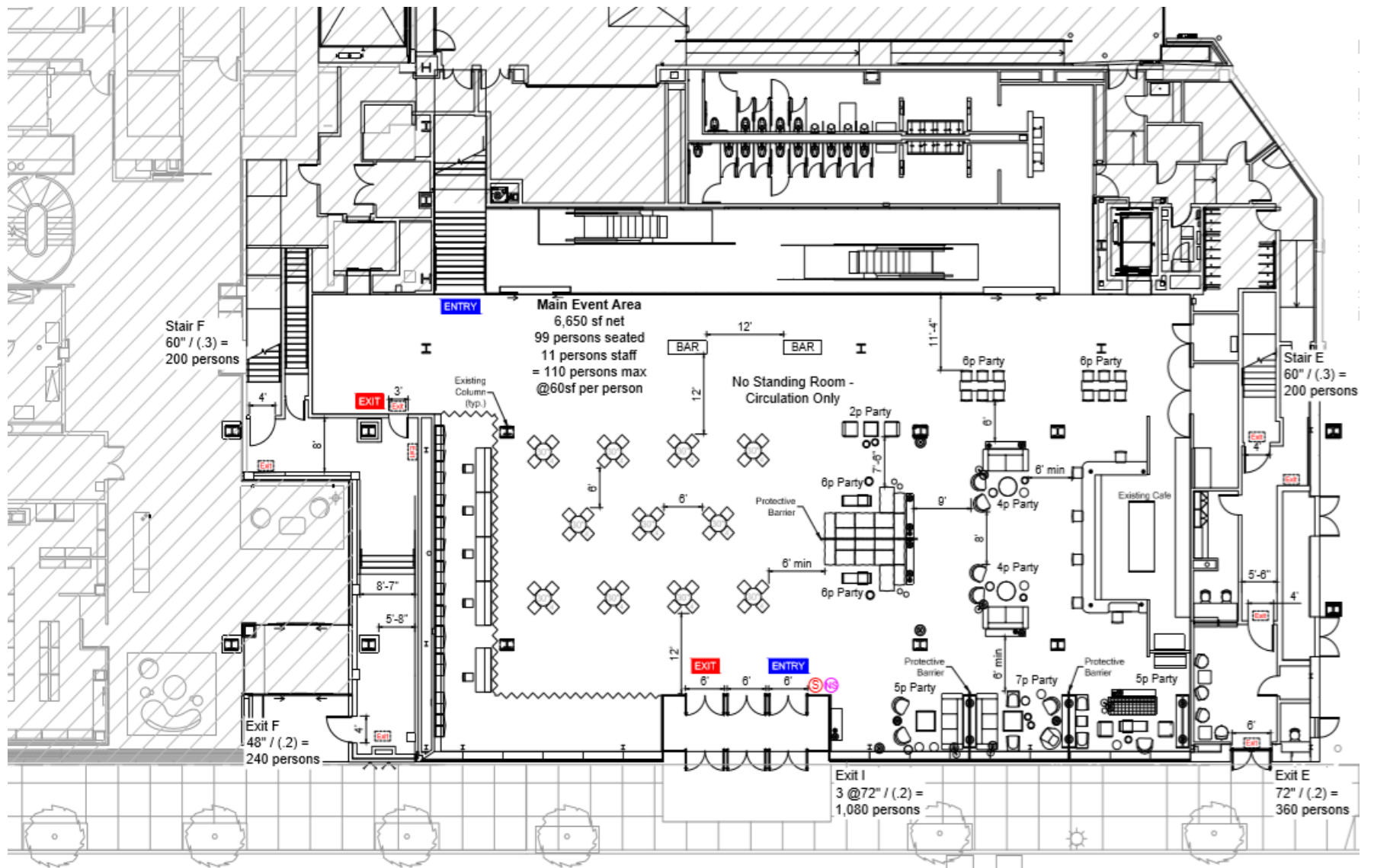
The Shed's Lobby. Photo: Scott Rudd Events.



The Shed's Lobby. Photo: Andy Jackson.



The Shed's Lobby. Photo: Walter Włodarczyk.



The Lobby Fall 2020 Reopening Plan

---

# **SPECIFICATIONS**

---

---

# SPECIFICATIONS

---

## Corporate Membership

---

**Corporate Membership** is the first step to entertaining at The Shed. Corporate Members receive a suite of year-round benefits, including access for employees, executives, and clients; corporate membership cards, guest passes, invitations to VIP openings and parties; and access to discounts on shopping and dining. Membership levels range from \$5,000–\$25,000 and allow companies the added opportunity to entertain in The Shed’s peerless spaces.\*

### **\$5,000 LEVEL CORPORATE MOVER**

- **Entertaining** benefit in the Tisch Skylights\*\*
- **Two** transferrable corporate member cards
- **Special** recognition of support on theshed.org

### **\$10,000 LEVEL CORPORATE BUILDER**

- **Entertaining** benefits in The Tisch Skylights, the Lobby, The Griffin Theater, and the Galleries\*\*
- **Five** transferrable corporate member cards
- **One** privilege to schedule an after-hours or before-hours tour of an exhibition or the building for 30 guests
- **Thirty** corporate guest passes to all exhibitions throughout the year
- **Special** recognition of support on theshed.org

### **\$25,000 LEVEL CORPORATE MAKER**

- **Entertaining** benefits in The Tisch Skylights, the Lobby, The Griffin Theater, the Galleries, and The McCourt\*\*
- **Free** priority admission for all employees to gallery exhibitions
- **Ten** transferrable corporate member cards
- **Sixty** corporate guest passes to all exhibitions throughout the year
- **Twenty-five** invitations to exclusive events and viewing hours throughout the year
- **Special** recognition of support on theshed.org

\*Corporate Membership fees are waived for nonprofits.

\*\*Entertaining benefits are subject to rental fees and all direct costs.

---

# SPECIFICATIONS

---

## Rental Rates

---

Our institutional commitment to access and flexibility is at the core of our rental program. Please email [rentals@theshed.org](mailto:rentals@theshed.org) to learn more about pricing and entertaining at The Shed. Note that pricing fees are subject to change.

### Corporate Rates

The McCourt	\$90,000
The Griffin Theater	\$40,000
Level 2 Gallery	\$40,000
Level 4 Gallery	\$40,000
Level 4 Overlook	\$25,000**
The Tisch Skylights	\$30,000
Lobby	\$25,000**

### Nonprofit Rates\*

The McCourt	\$65,000
The Griffin Theater	\$35,000
Level 2 Gallery	\$35,000
Level 4 Gallery	\$35,000
Level 4 Overlook	\$20,000**
The Tisch Skylights	\$25,000
Lobby	\$20,000**

### Additional Required Fees

Cleaning Deposit	\$10,000 (refundable)
Security & Operations	<i>Based on event guest count</i>
Local 1 Union Labor	<i>Based on scope of the event. See Local 1 Rates and Guidelines <a href="#">here</a>.</i>

\*Must provide current proof of 501(c)(3) status to receive this rate

\*\*\$10,000 when combined with other spaces in the building



---

# SPECIFICATIONS

---

## Production & Staffing

---

**Our team** is here to help you produce a spectacular event. We hold walk-throughs for each event individually to determine unique production and front-of-house needs so you can reliably plan a seamless experience. All front-of-house staff (ushers, greeters, house manager, coat check), maintenance staff, and basic facility security expenses are included in our security and operations fee, which is calculated based on your guest count.

### **Equipment**

Each space comes with its own unique inventory of production equipment, included in the rental fee. To review all available technical options, floor plans and production logistics, please click [here](#).

### **Customer Service & Box Office**

The Shed utilizes the ticketing software Tessitura and has a union box office. Box office set-up and standard staffing can be added on to your venue agreement. The daily rate is not inclusive of ticketing handling fees, consignment fees, credit card charges, or any fees associated with late requests or expedited service requests. Please note that we do require renters to use The Shed's box office for all ticketing to ensure the best customer service for your patrons.

### **Production**

The Shed is a union venue represented by IATSE Local 1 stagehands. Stagehand labor is not included in the rental or security and operations fees. The stagehands complete all production work for the building (which can include any assembly, installation, and power needs within the building) and are paid at a separate hourly rate according to our collective bargaining agreement. We walk through each event individually to determine the unique production needs and then create the labor call and invoice accordingly.

---

# SPECIFICATIONS

---

# Information Technology

---

As a 21st-century cultural and arts center, The Shed is dedicated to providing state-of-the-art connectivity and virtual advancement to our artists, partners, and community. We can provide a variety of connectivity options for special events; some are available without additional configuration, while others may require coordination and special set-up. Alternatives and logistics can be discussed in more detail with The Shed's event manager.

## **Digital Signage Take-over**

The Shed's digital signage system (DSS) can be easily "taken over" by external content. Those who choose to entertain at The Shed can review the Content Specification document [here](#) for details. Assets must be submitted five business days in advance of the event so our technology team can verify that all assets are correctly formatted. Note that custom assets cannot be displayed in public spaces while The Shed is open to the public. Custom assets in public spaces in The Shed can only be displayed when The Shed is closed to the public.

## **Internet Access**

Both Wi-Fi and a hardwired internet connection are available with bandwidth up to 1Gbps. Additional bandwidth may be provided upon request.

## **Special Requests**

The Shed's Technology Department can provide other custom solutions and support for events. These include custom Wi-Fi networks, more complex wired network implementation, custom digital signage content (other than that defined by the Content Specification), live streaming, and broadcasting.

---

# SPECIFICATIONS

---

## Catering

---

**Union Square Events**, a New York City event catering company from Danny Meyer’s Union Square Hospitality Group, is the exclusive caterer for The Shed. Union Square Hospitality Group has partnered with The Shed to create a sense of continuity and collaboration between The Shed’s programming and hospitality services.

### General Information

While both Shed and Union Square Events staff commit to providing a seamless event experience, catering costs and details\* are coordinated directly with the Union Square Events team. Union Square Events team members dedicate themselves to events from start to finish, whether it’s making rental recommendations or drawing service floor plans. Their event expertise, exceptional menus, and extensive knowledge of the building make any event at The Shed feel unique and inspired.

### Shed Catering Policies

- All alcohol must be purchased through Union Square Events.
- Donated product is subject to Shed approval. If approved, the licensee is responsible for the removal of any excess product or refuse associated with the donation.
- Catering BOH rentals are exclusive to Party Rental, LTD. FOH rentals are not subject to any exclusive vendors but require Shed approval.

### Contact

To learn more about Union Square Events and their offerings, please make an inquiry [here](#) or email [theshed@unionsquareevents.com](mailto:theshed@unionsquareevents.com).

\*Catering estimates do not include furniture and equipment rentals coordinated by Union Square Events.

---

# CONTACT

---

## Partnerships & Events

---

### **CORPORATE MEMBERSHIP**

For more information about Corporate Membership, or the higher levels of The Shed's Corporate Council and sponsorship opportunities, please email [corporate.support@theshed.org](mailto:corporate.support@theshed.org).

### **Corporate Partnerships Team**

Bobby Kean, Director of Corporate Partnerships  
Anna Foy, Corporate Partnerships Associate

### **SPECIAL EVENTS & RENTALS**

For more information about The Shed's rental program and partnership opportunities, please email [rentals@theshed.org](mailto:rentals@theshed.org).

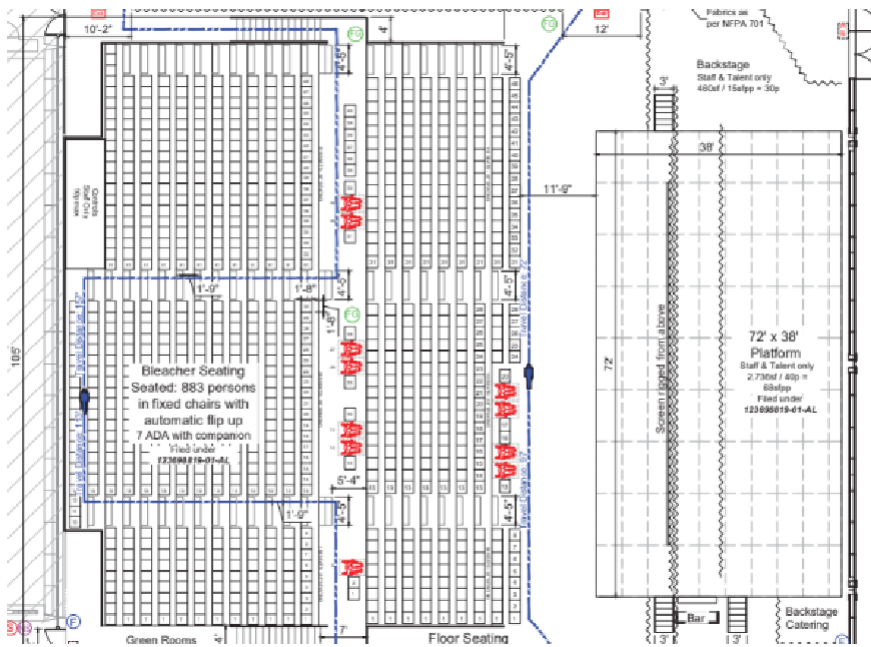
### **Special Events Team**

Kristina Mompont, Director of Special Events  
Gina Dyches, Special Events Manager  
Lily Barsanti, Special Events Coordinator

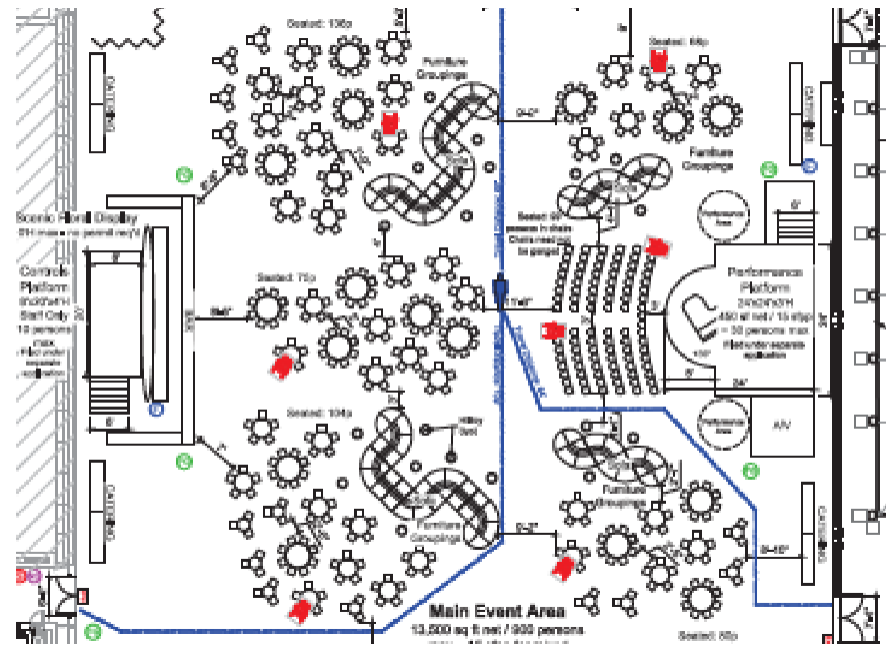
---

# APPENDIX

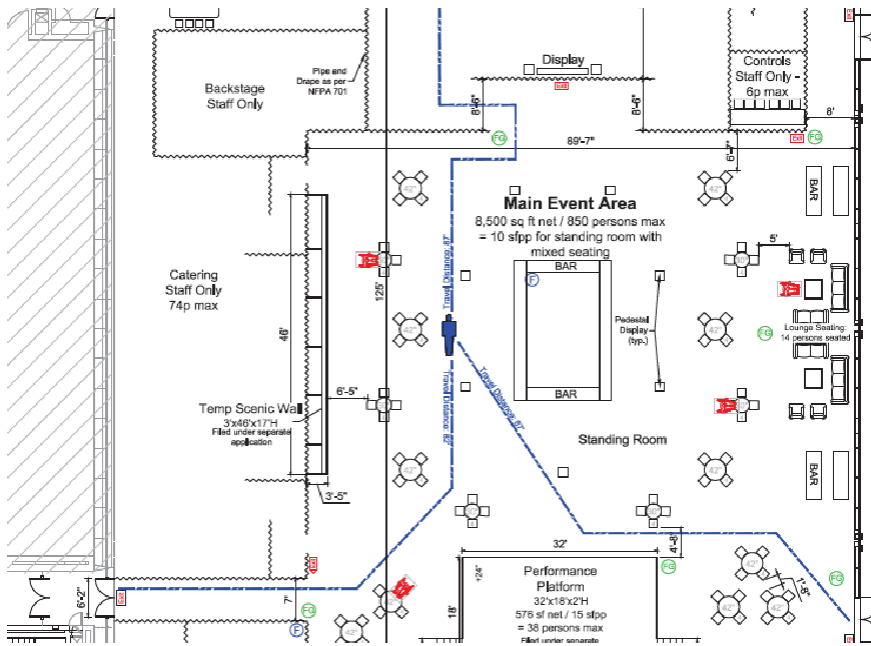
---



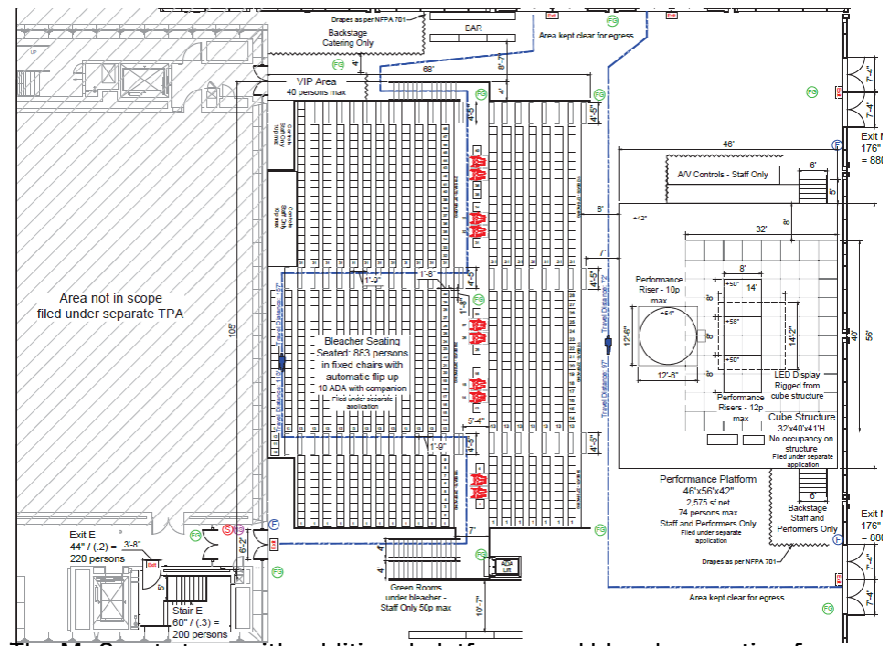
The McCourt stage and bleacher seating for 900.



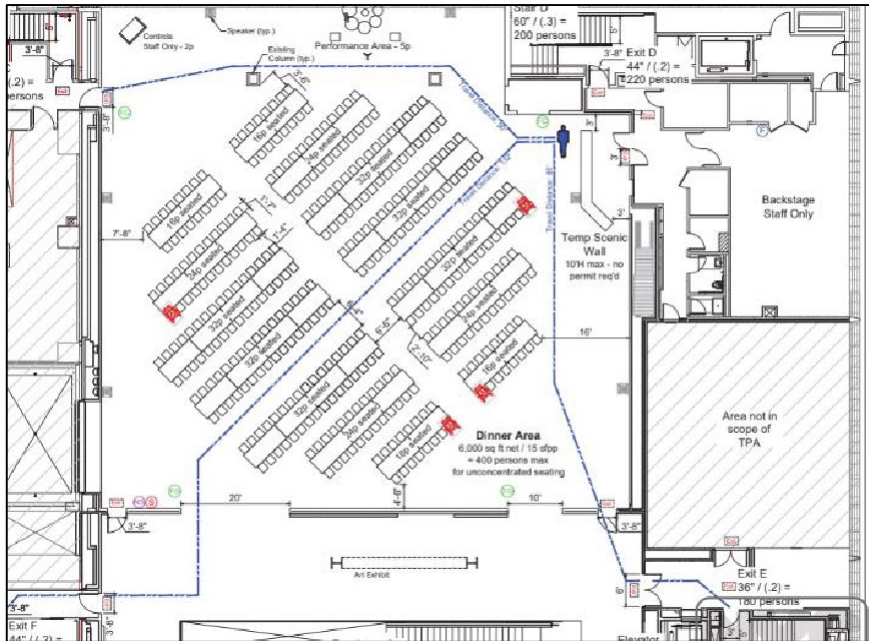
The McCourt stage, table seating, and cocktails.



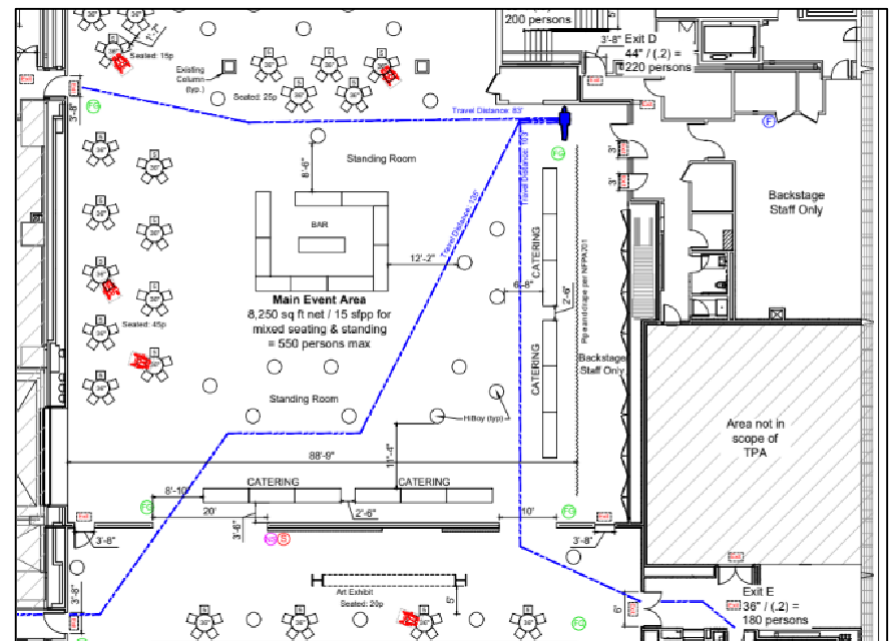
The McCourt set for cocktails, a bar, and back of house.



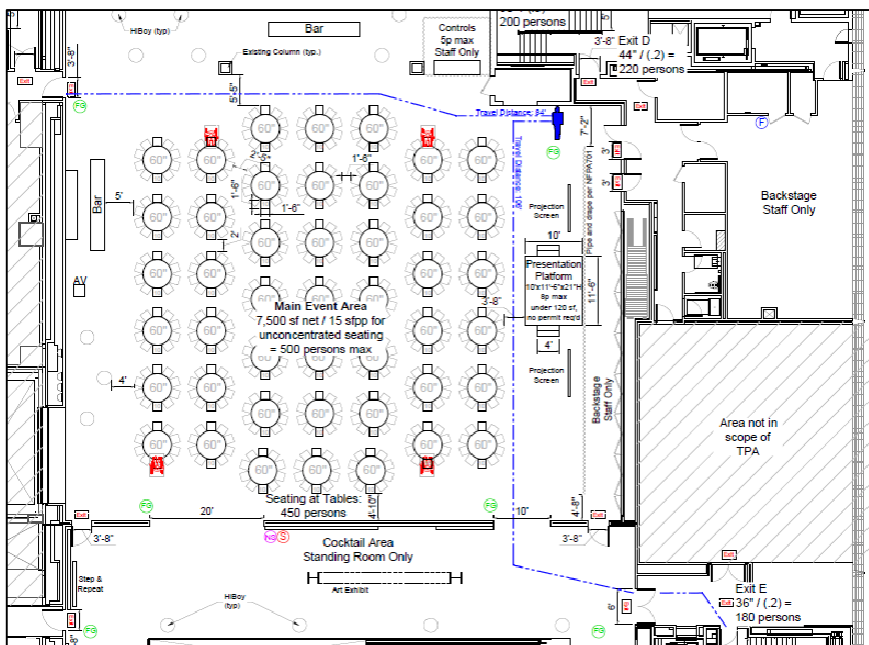
The McCourt stage with additional platforms and bleacher seating for 900.



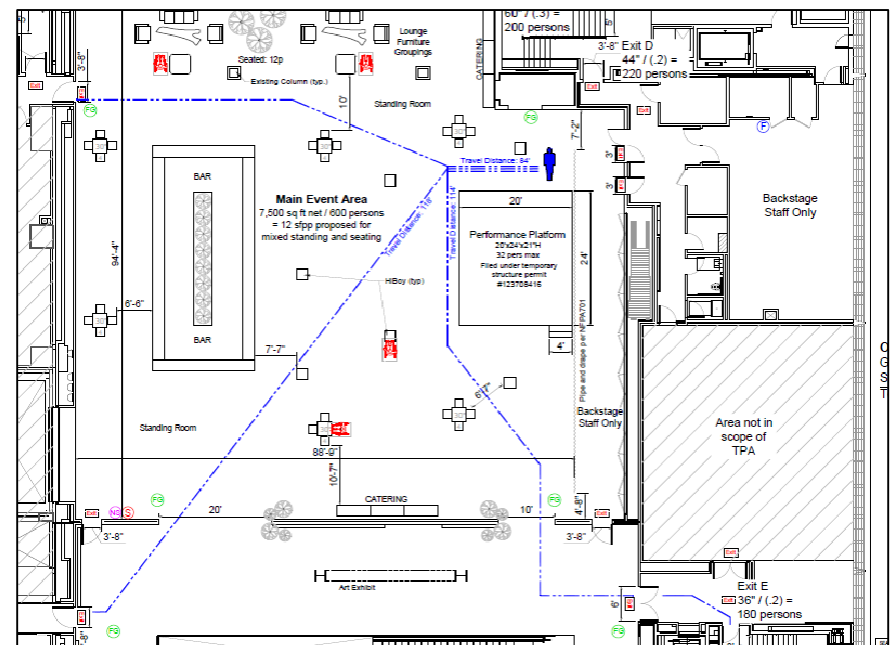
The Tisch Skylights table seating for 400.



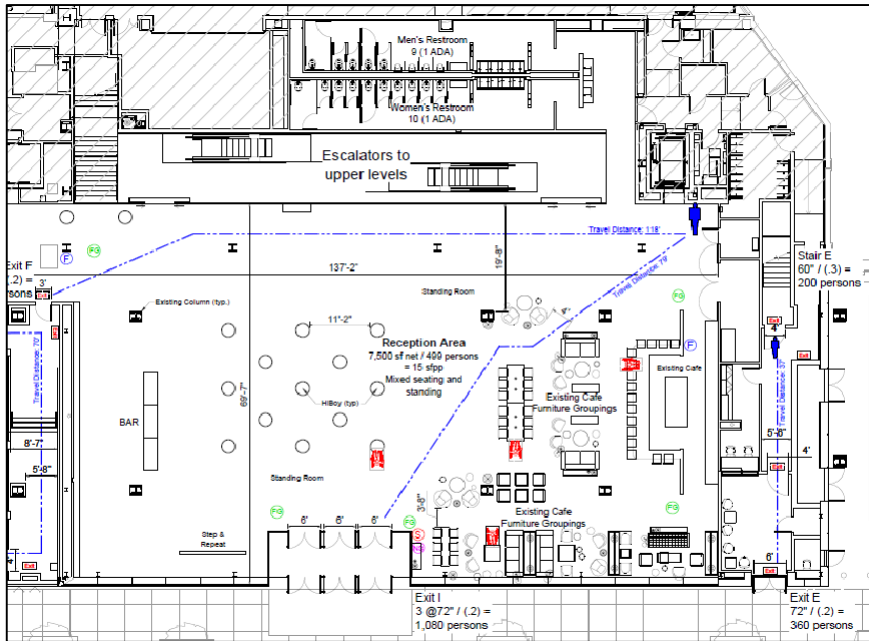
The Tisch Skylights mixed seating and standing for 550.



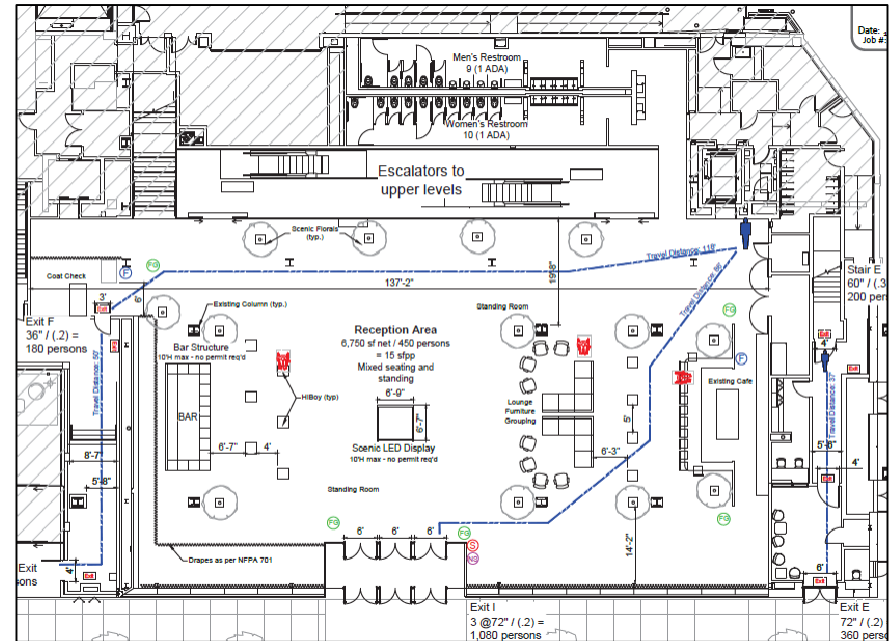
The Tisch Skylights table seating for 450.



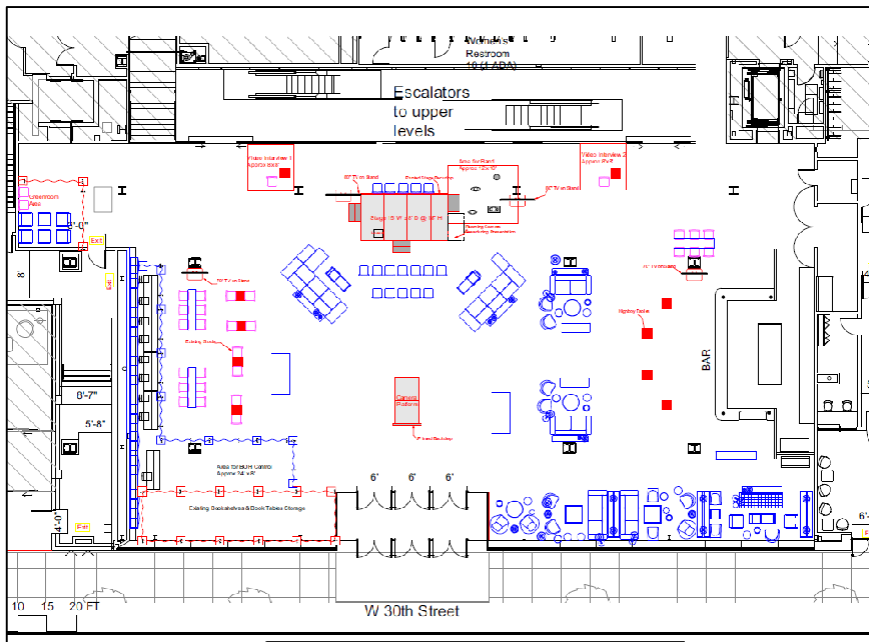
The Tisch Skylights cocktails and live performance for 600.



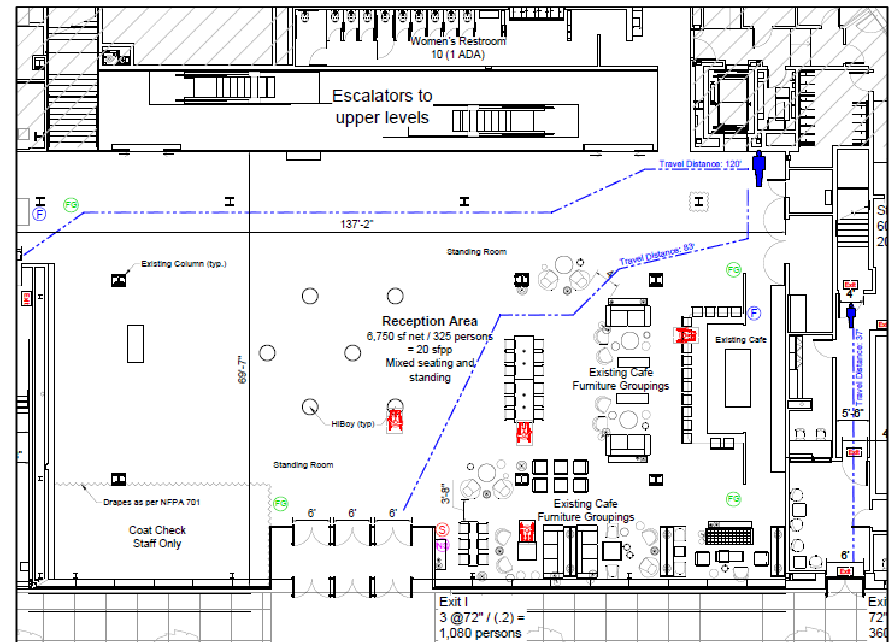
The Shed's Lobby set for mixed seating and standing.



The Shed's Lobby set for mixed seating and standing.



The Shed's Lobby set for mixed seating, standing, and a stage.



The Shed's Lobby set for mixed seating and standing.