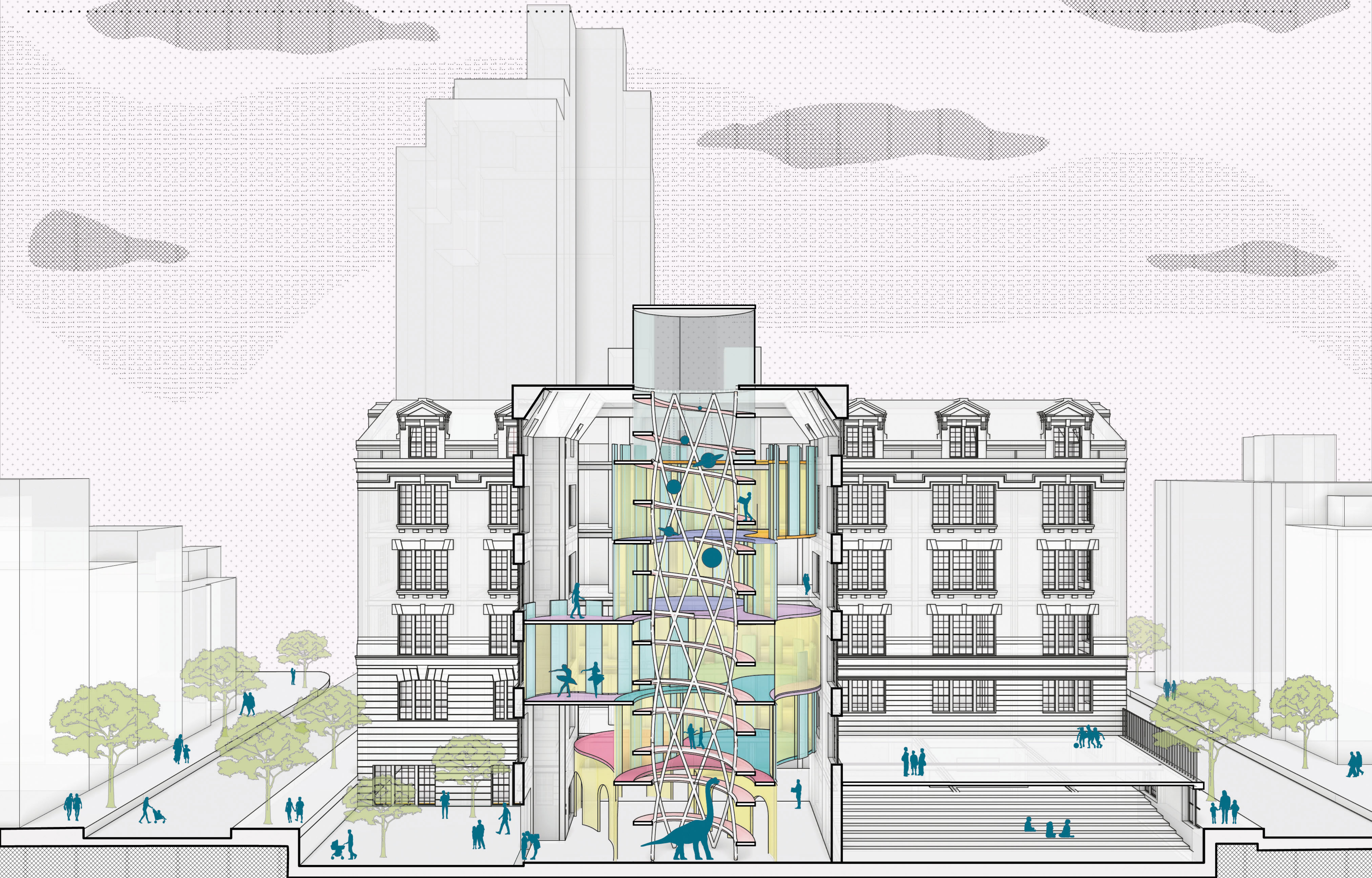


THE SCHOOL OF INSIGHT



ABSTRACT

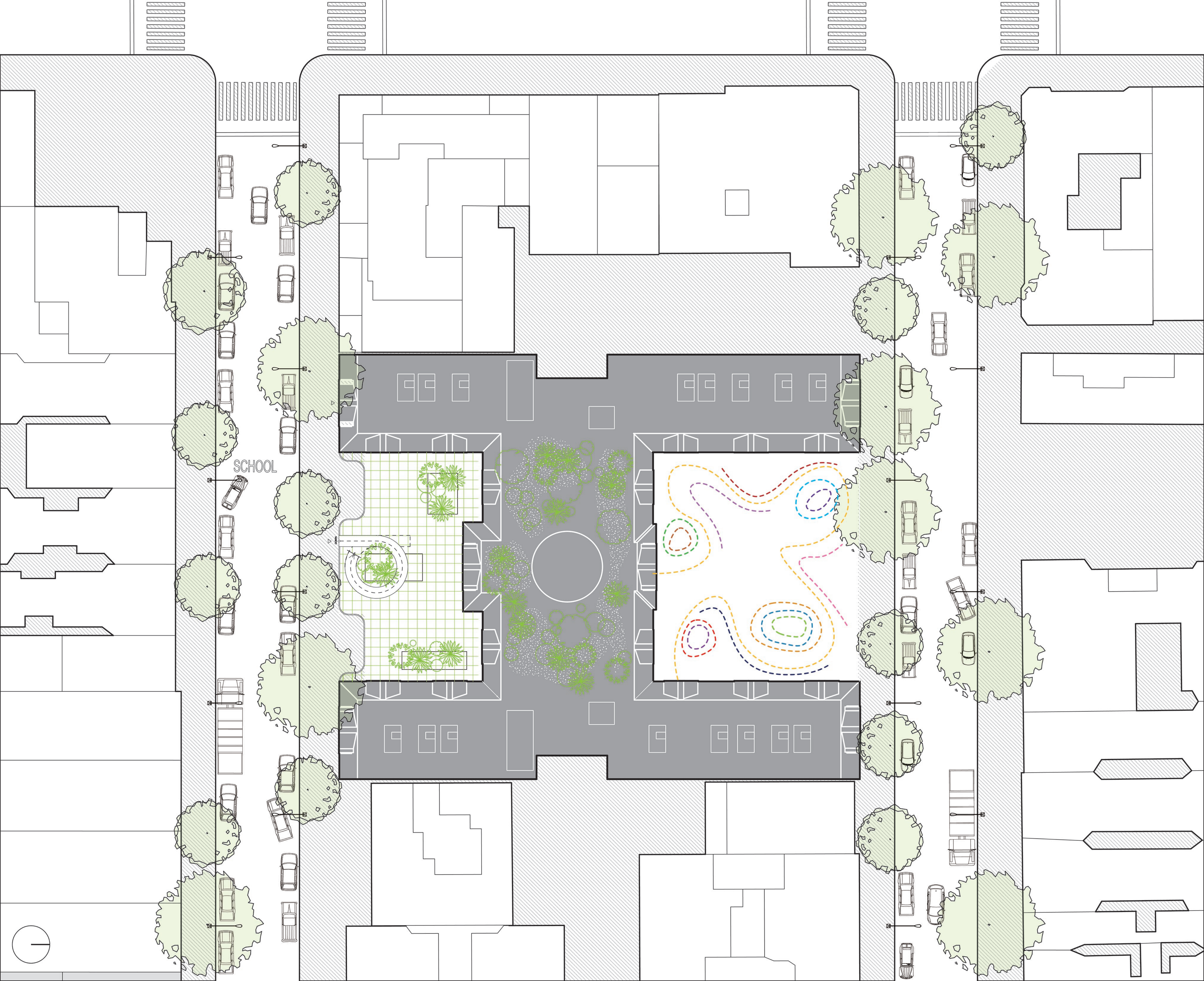


The built environment is full of obstacles and inconveniences for people who don't navigate by sight. In typical buildings, accommodations for the visually impaired are small and scattered: braille on signs and beside elevator buttons; guardrails abutting stairs or ramps... Those are partial measures imposed by building codes, and they are generally afterthoughts in the typical design process.

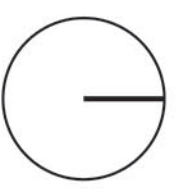
I believe in an Architecture that start internally and physically with the body to then become a more empathetic design. Beginning with human experience rather than beauty has applications beyond the visually impaired communities as the needs of those communities are not mutually exclusive. My project aims to define a new design philosophy that can be applied to tackling problems of sustainability as climate change worsens, exponential urbanization, or aging populations just to cite a few. It can be used to improve spaces for able-bodied people, too, by emphasizing their comfort and the ways they want to make use of space.

Focusing on the reality of visually impaired students, the school rethinks the concept of universal design. My group of "outsiders" is thus not limited to visually impaired children but also children with visually impaired parents (or siblings).

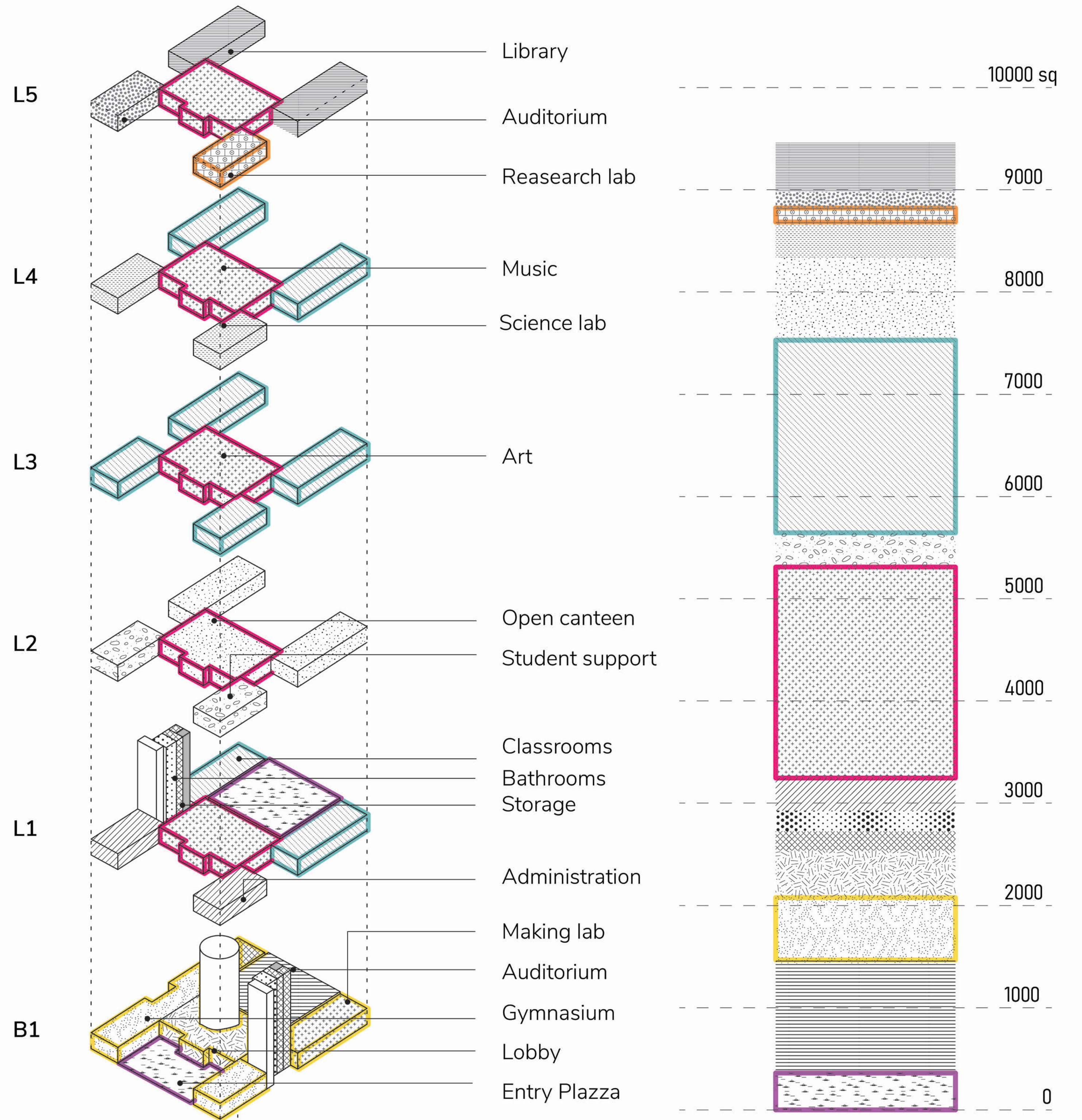
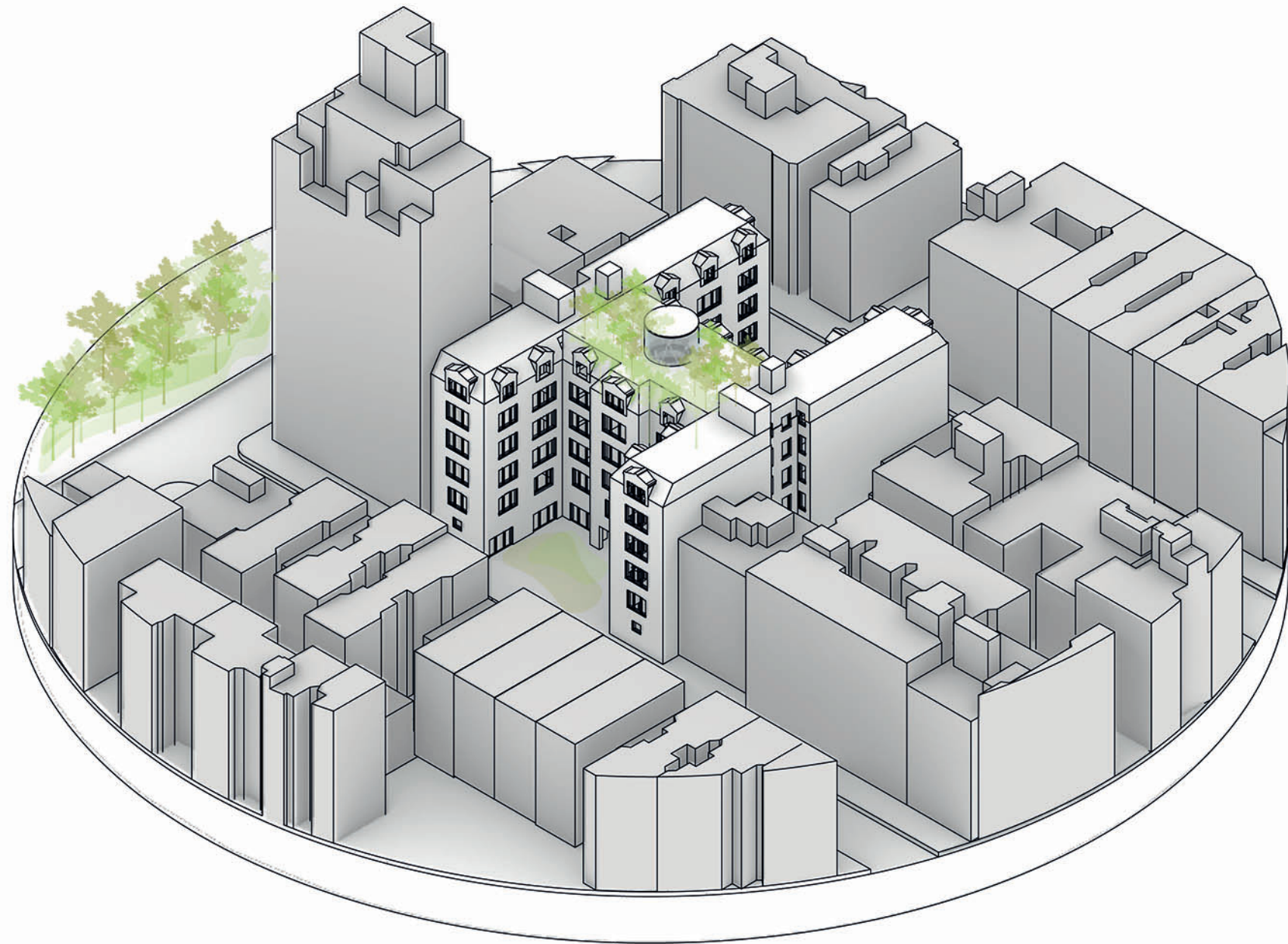
Redefining typical school areas such as classrooms, corridors, playground etc., the design wants to challenge our understanding of space that often relies mainly on sight. By playing with gravity, light and forms, the aim is to equalize the experience of seeing and non seeing individuals.



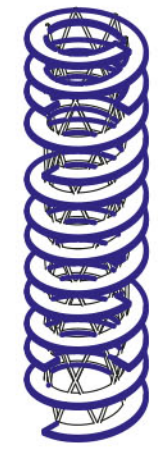
SCHOOL



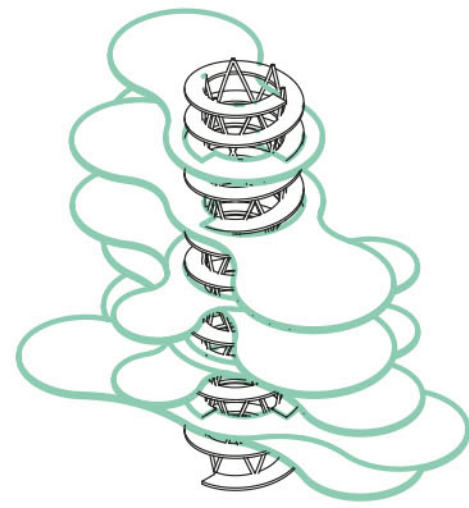
PROGRAM



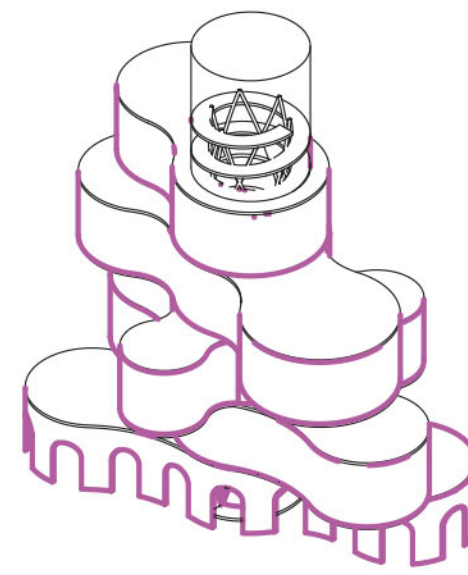
STRUCTURE



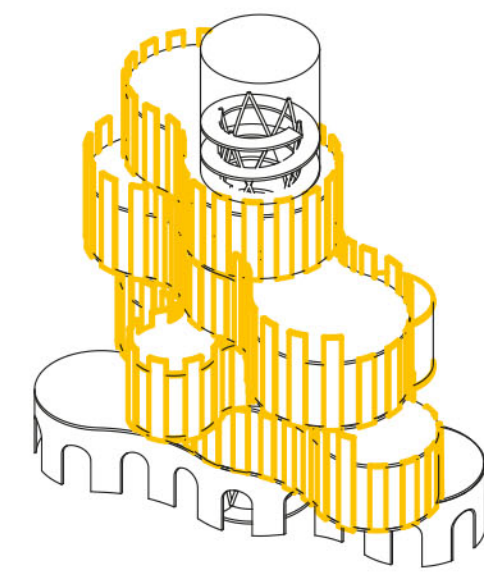
Central Helix



Cloud floor plates

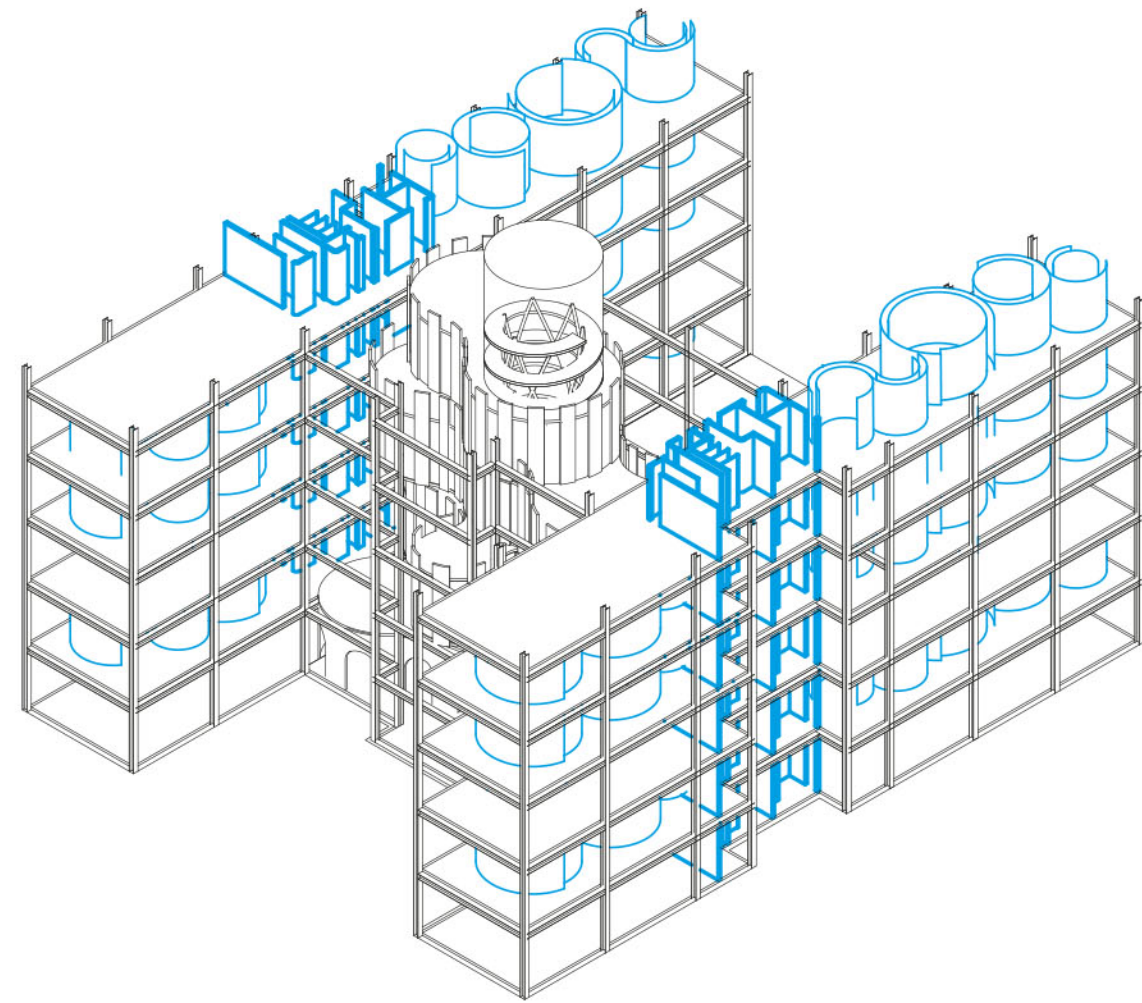


Dynamic skin

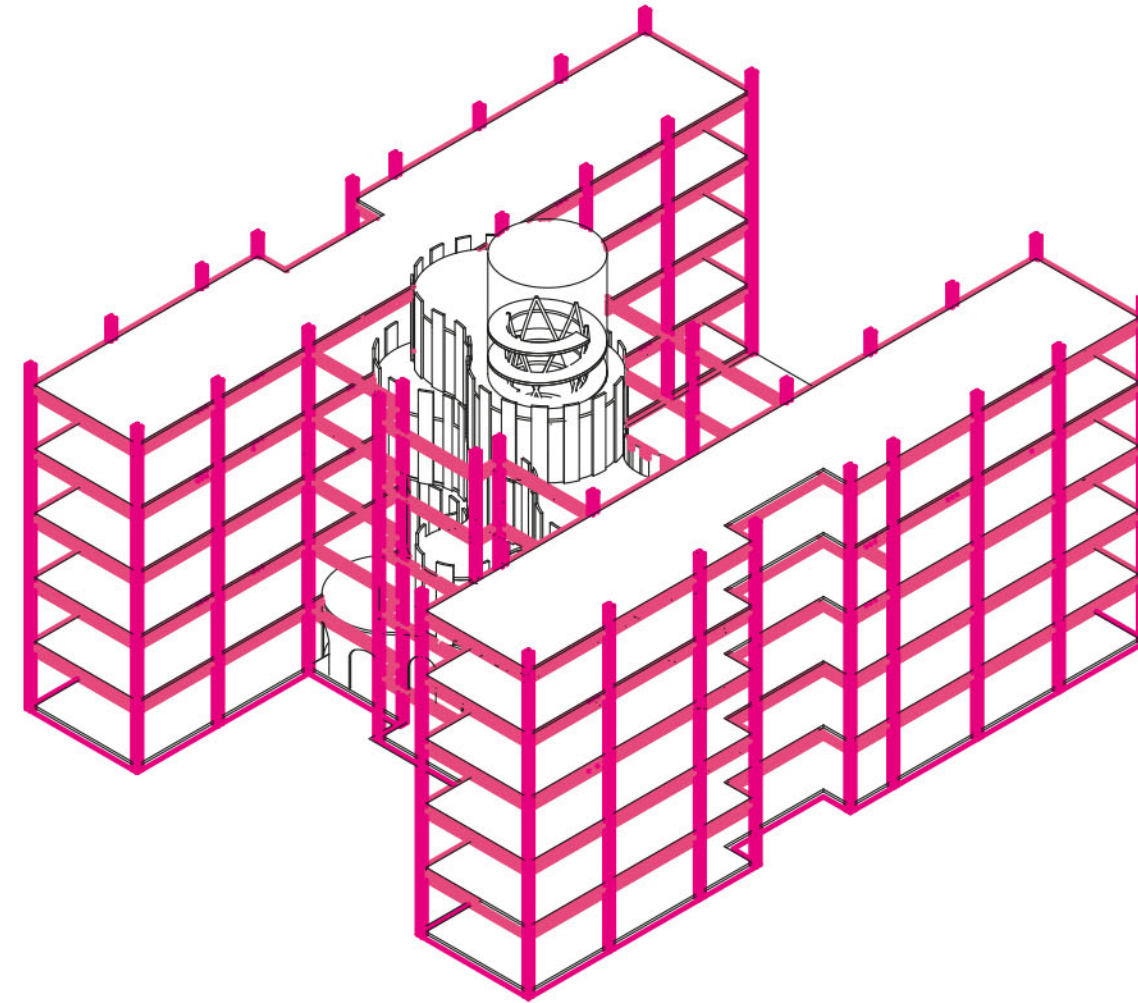


CLT Partitions / railing

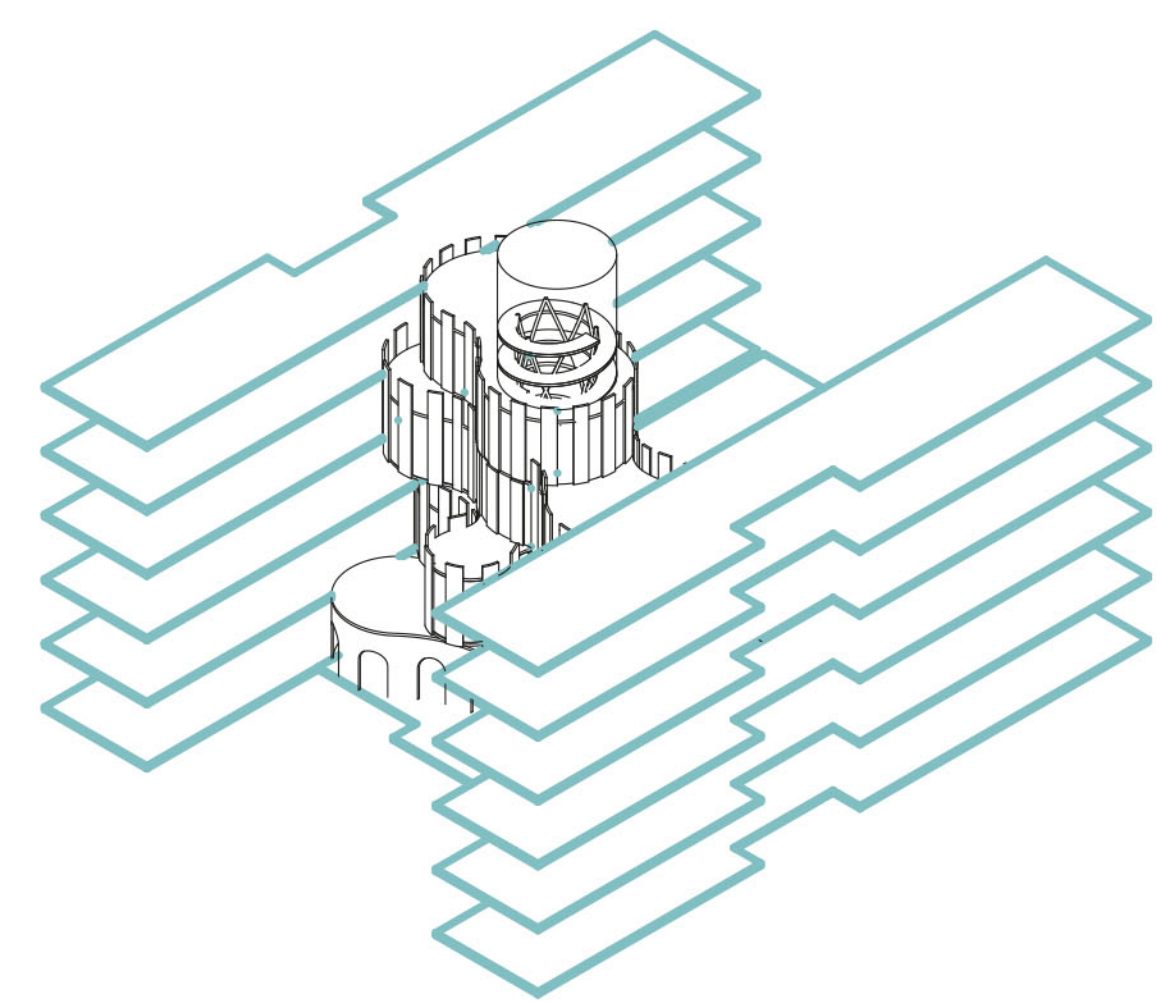
○
Inside



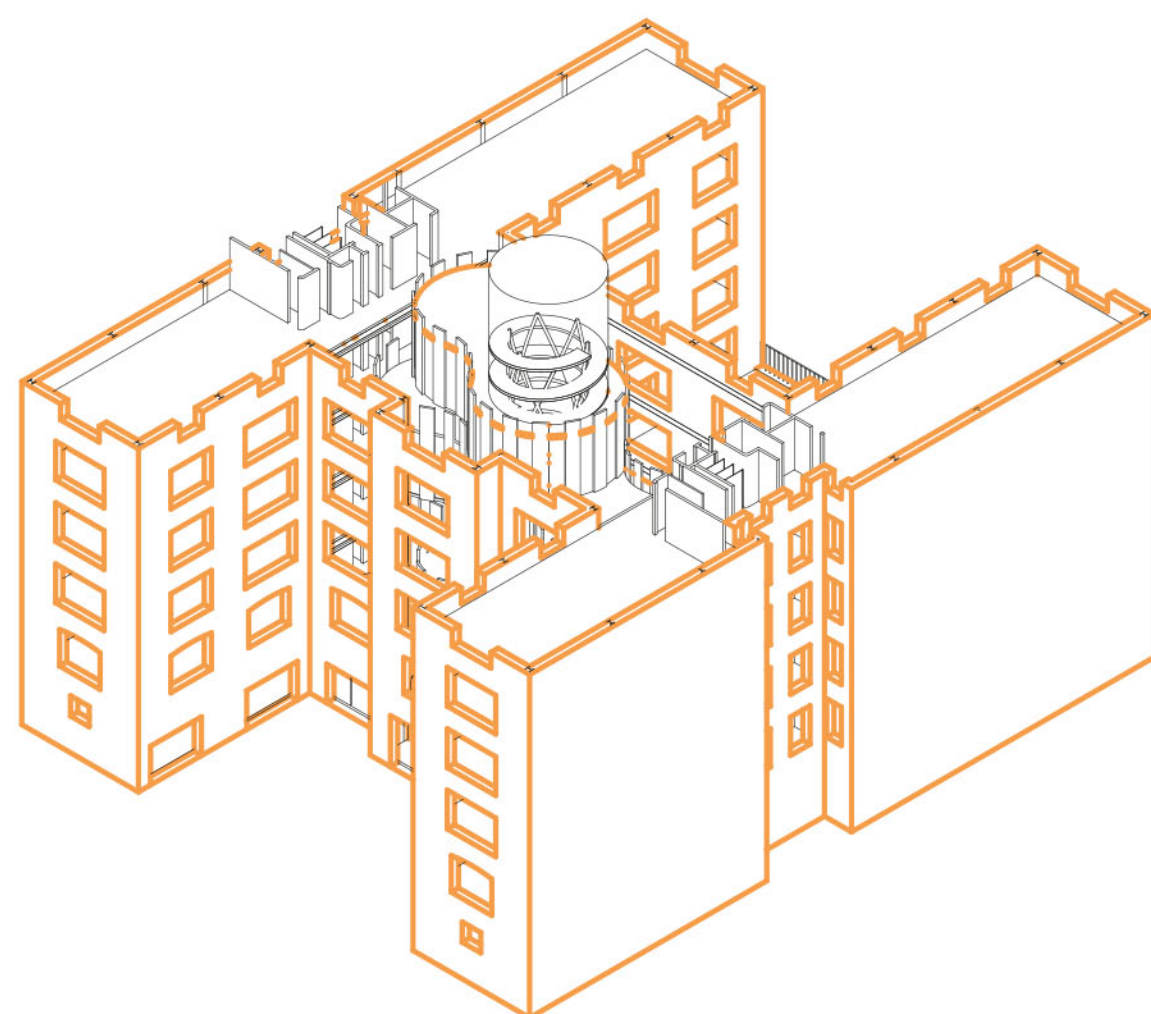
Inner walls x Pods



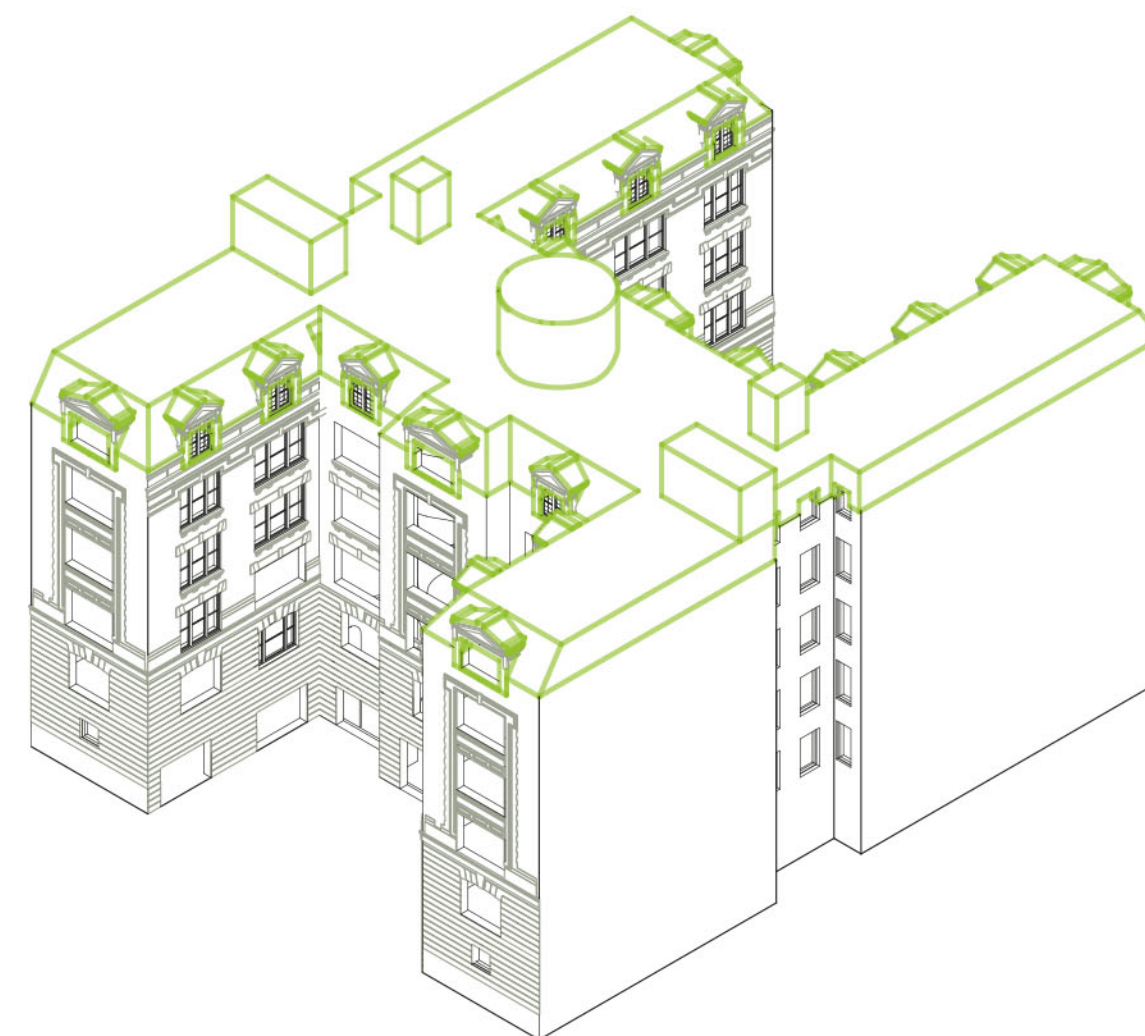
Steel frame structure



CLT floor slabs



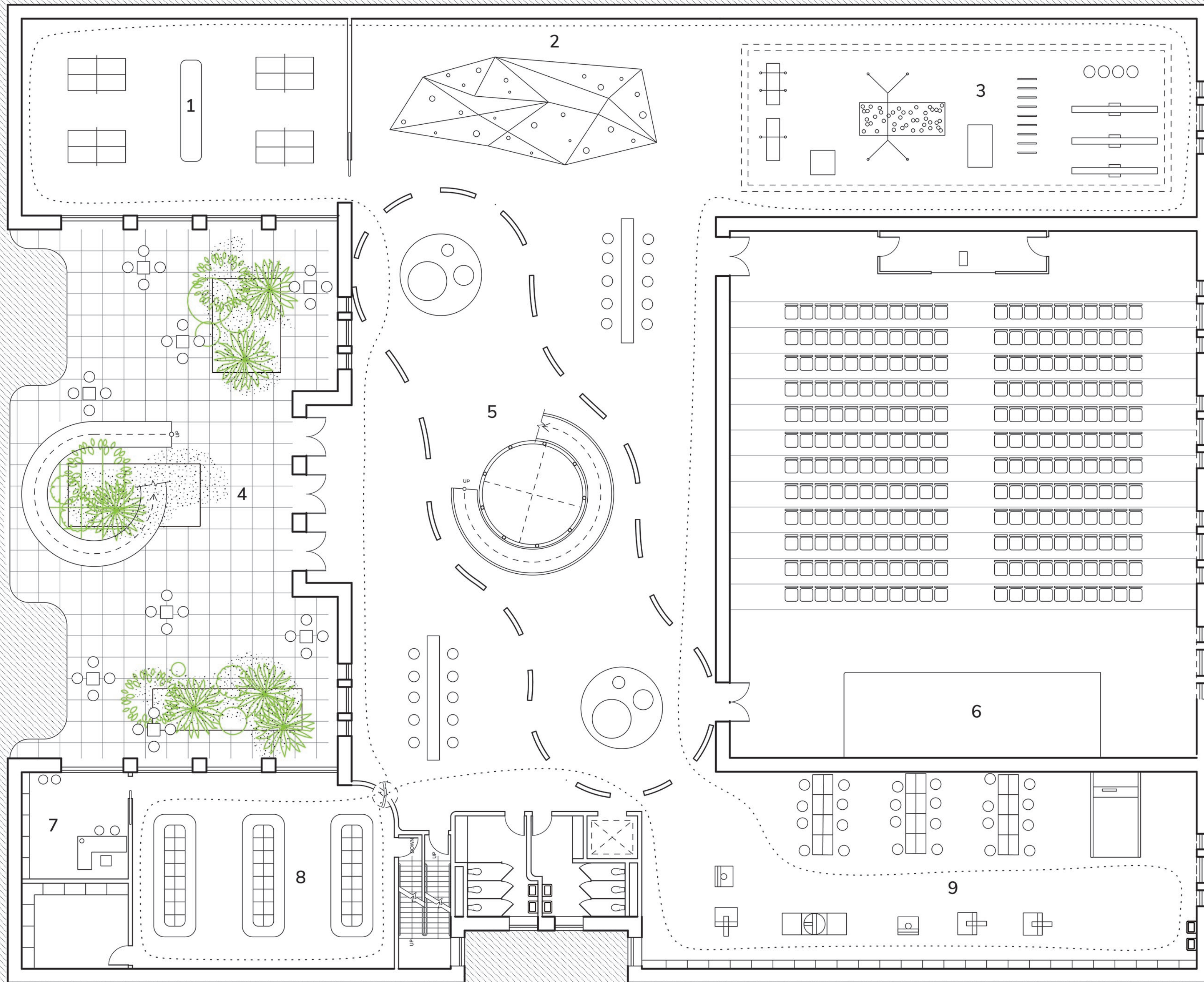
Load bearing existing walls



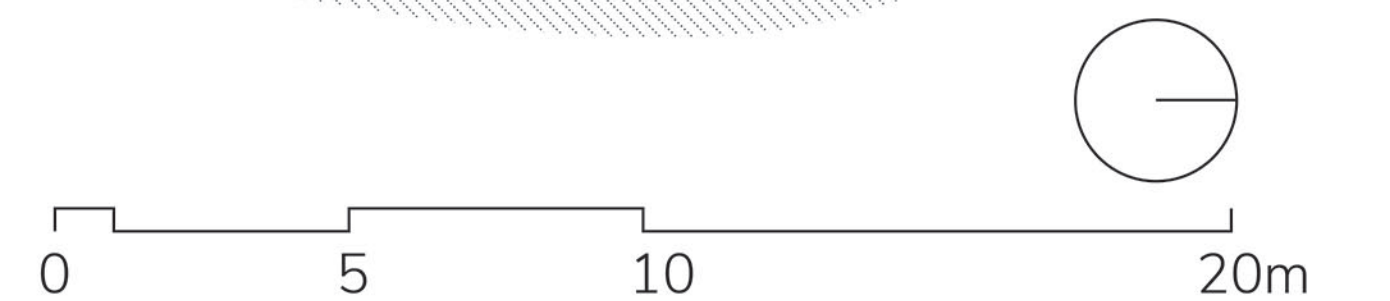
Green roof x Existing building envelope

→
Outside

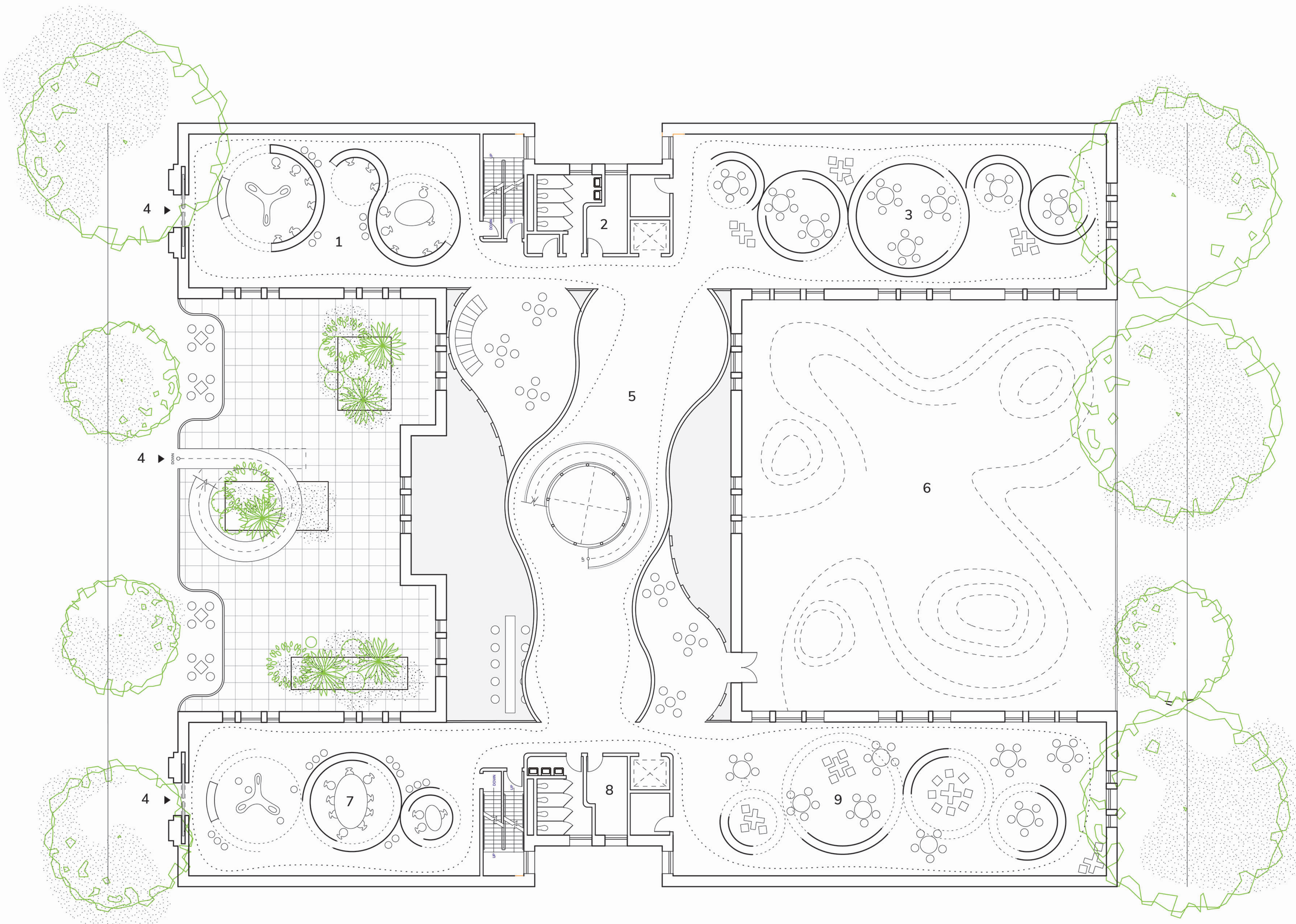
B1



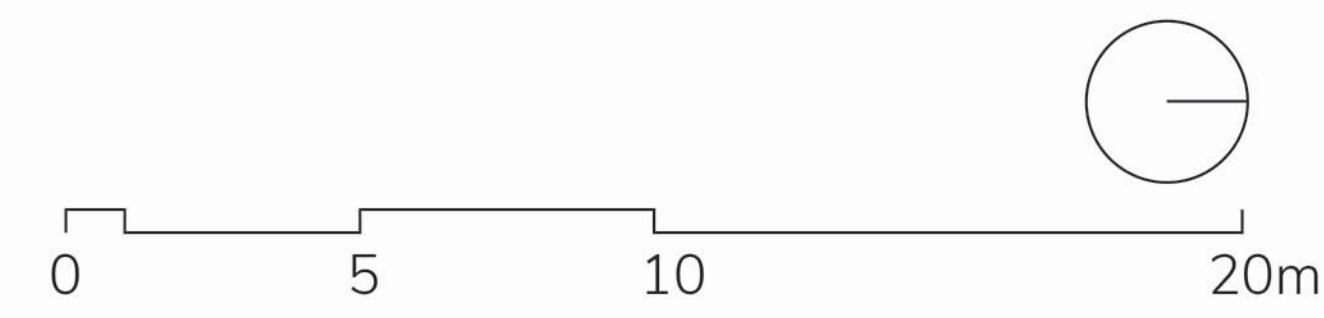
- 1 Indoor tennis
- 2 Rock Climbing
- 3 Gymnasium
- 4 Entry plaza
- 5 Lobby
- 6 Auditorium
- 7 P.E Office / Storage
- 8 Lockers room
- 9 Making Lab

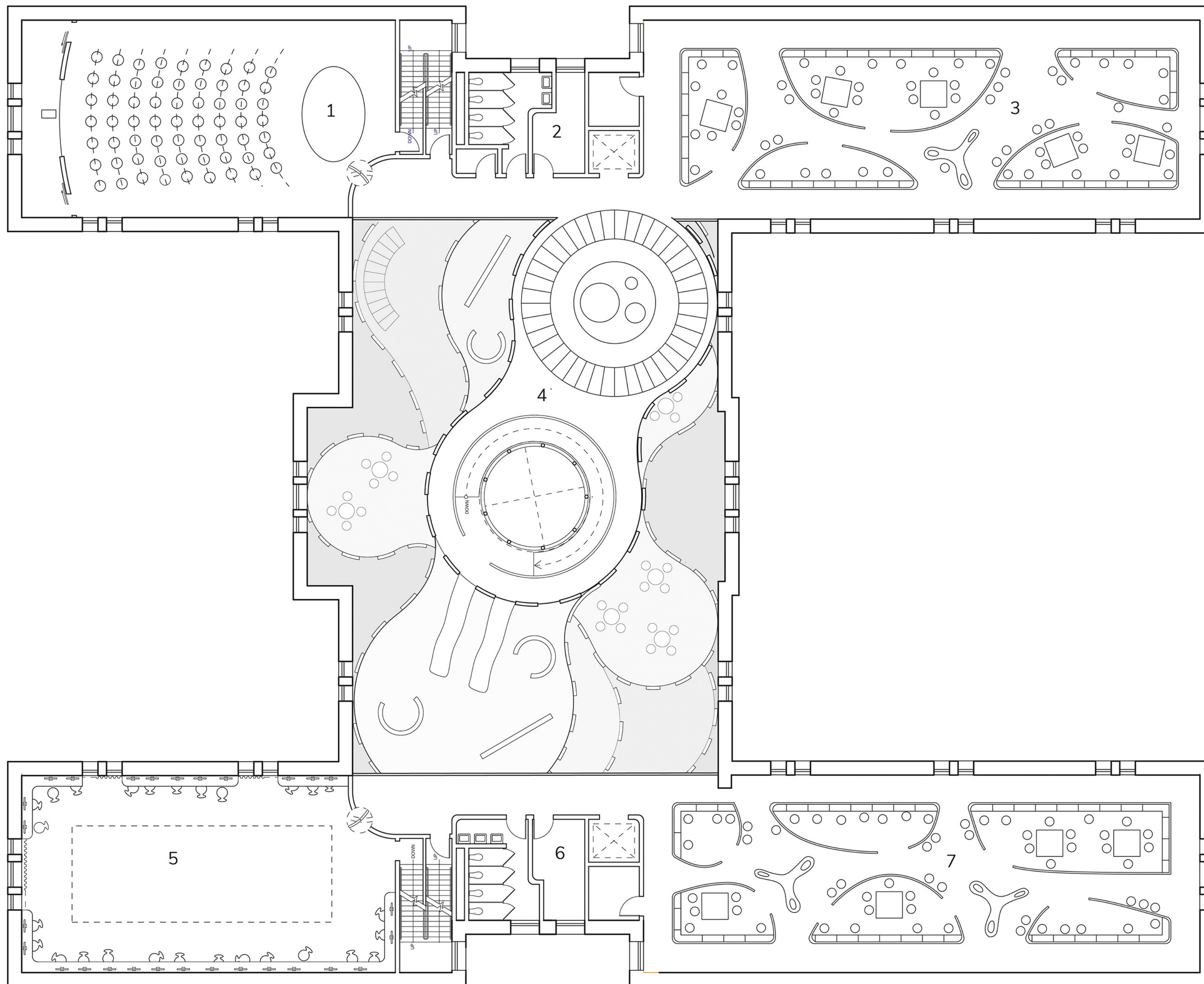


L1



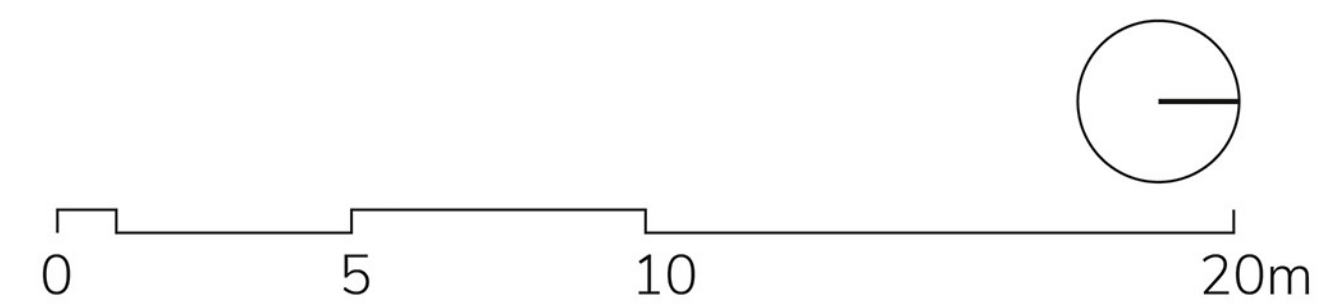
- 1 Administration
- 2 W.C / Custodial
- 3 Pre-K classrooms
- 4 Street level entries
- 5 Experimental learning
- 6 Outdoor Playground
- 7 Administration
- 8 W.C / Custodial
- 9 K-level classrooms





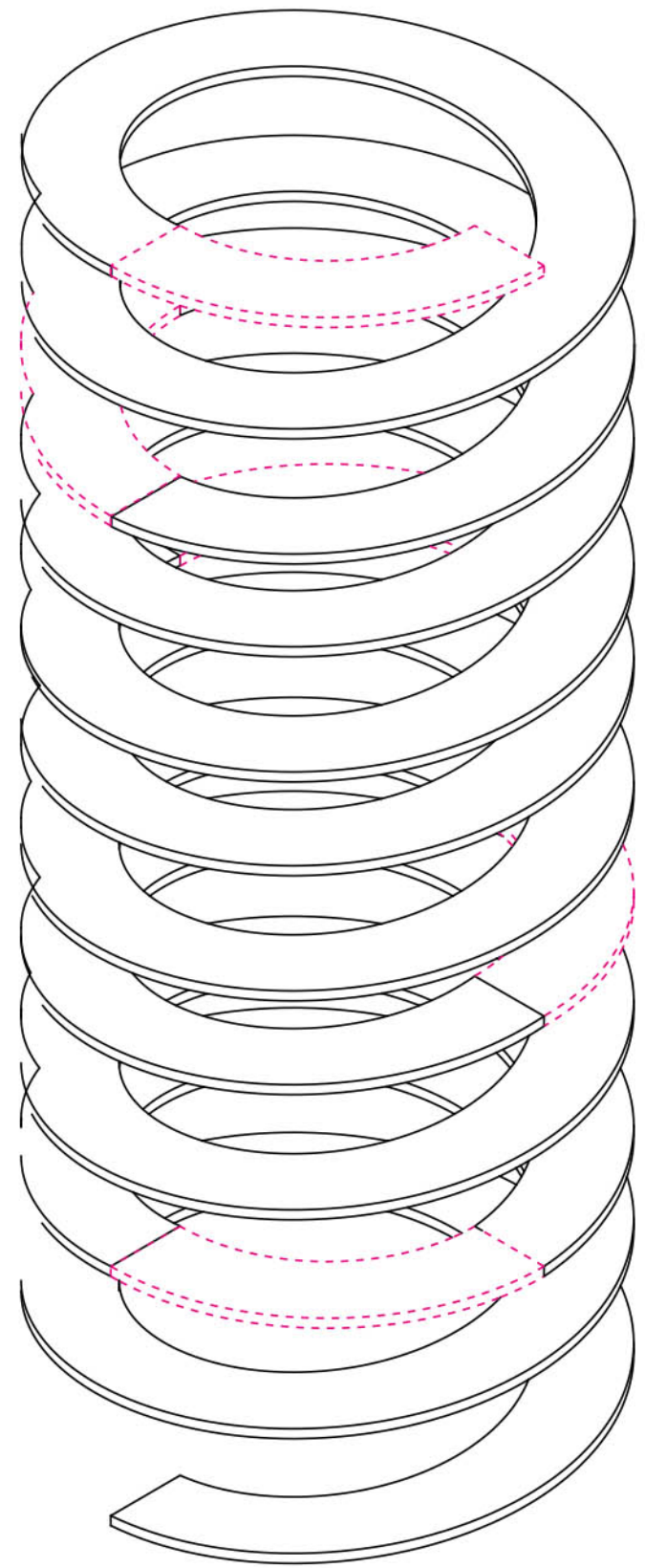
L5

- 1 Projection room
- 2 W.C / Custodial
- 3 Library
- 4 Experimental Learning
- 5 Reasearch Lab
- 6 W.C / Custodial
- 7 Library

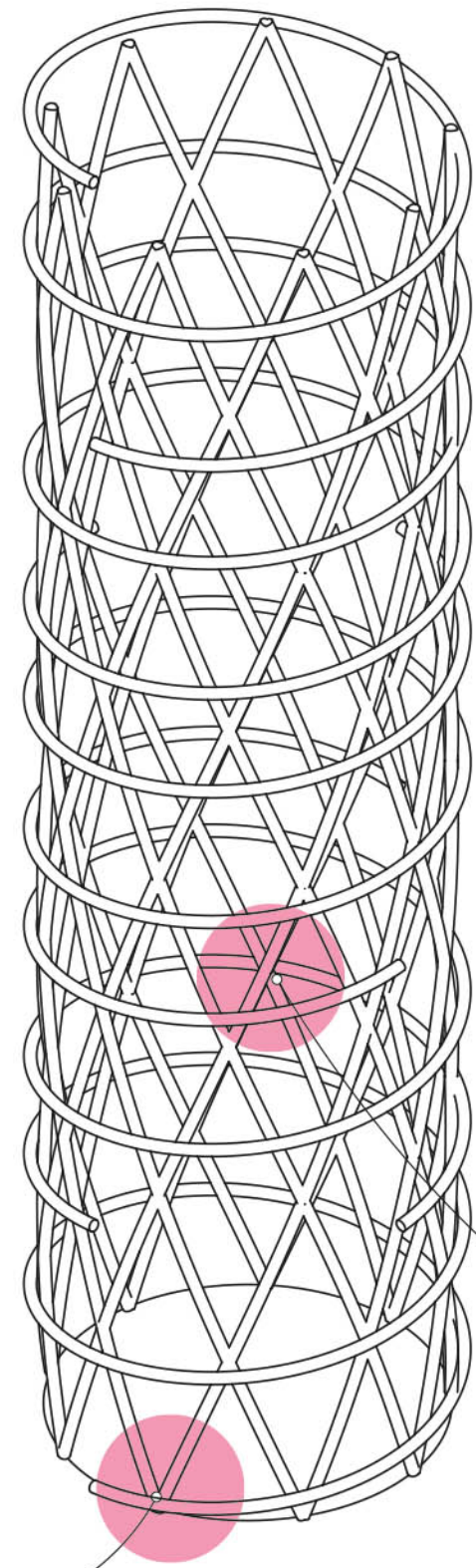


THE HELIX

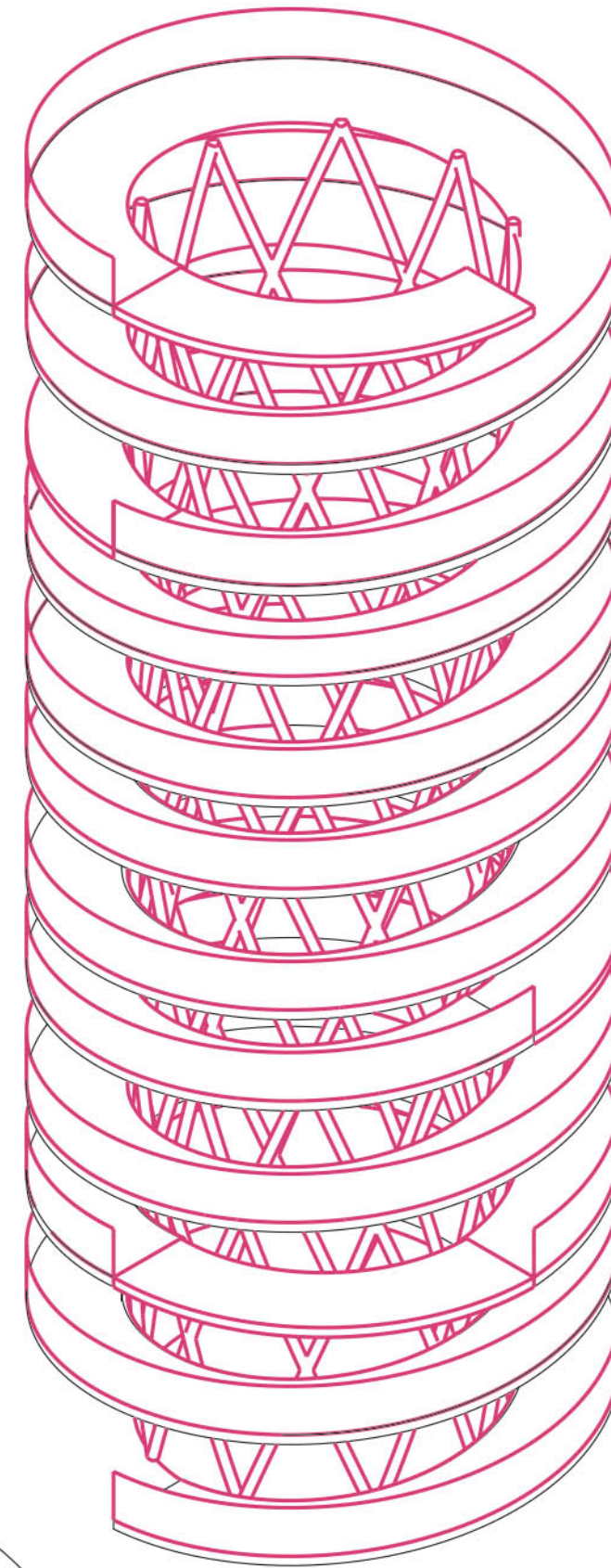
CLT ramp



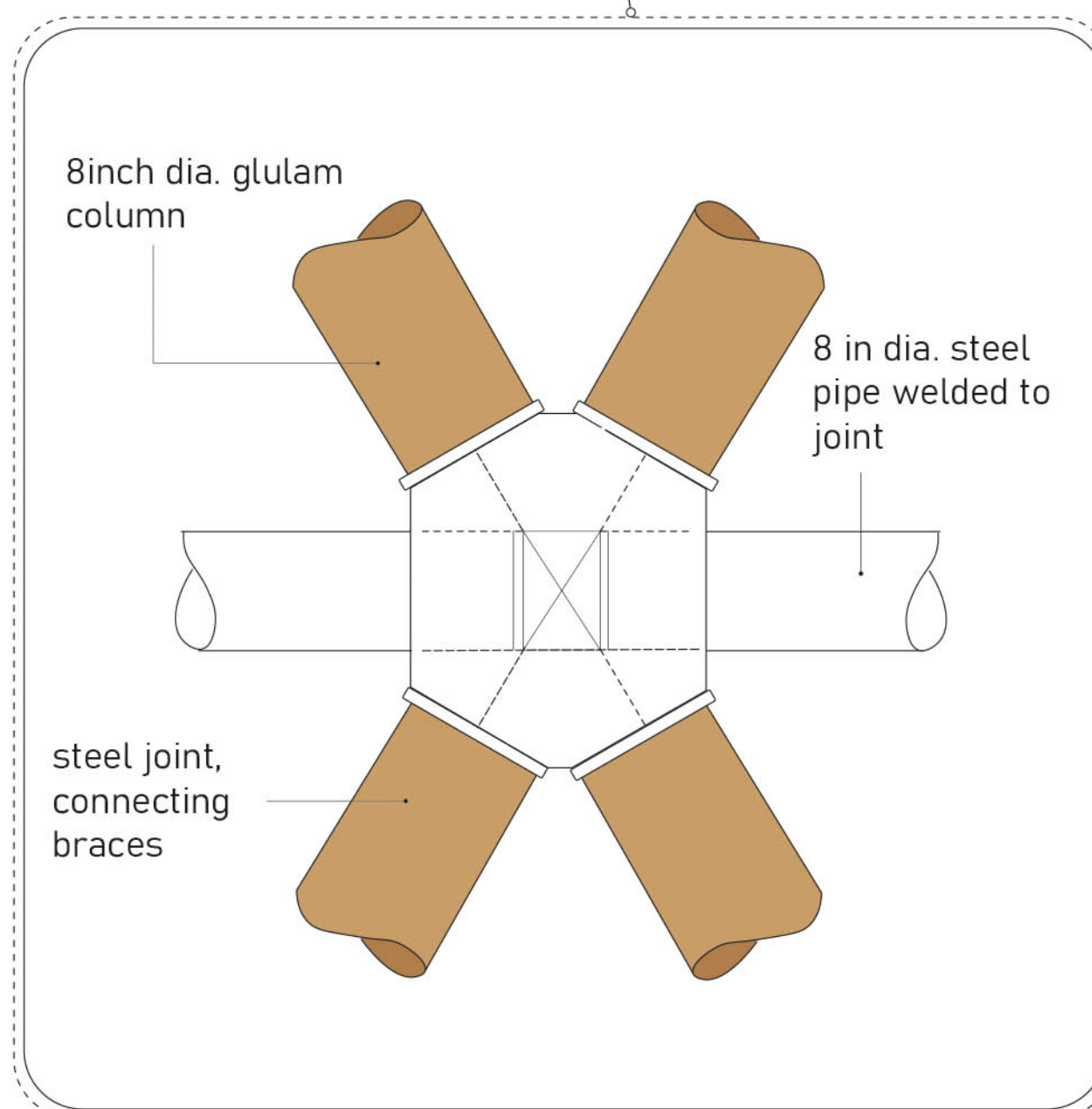
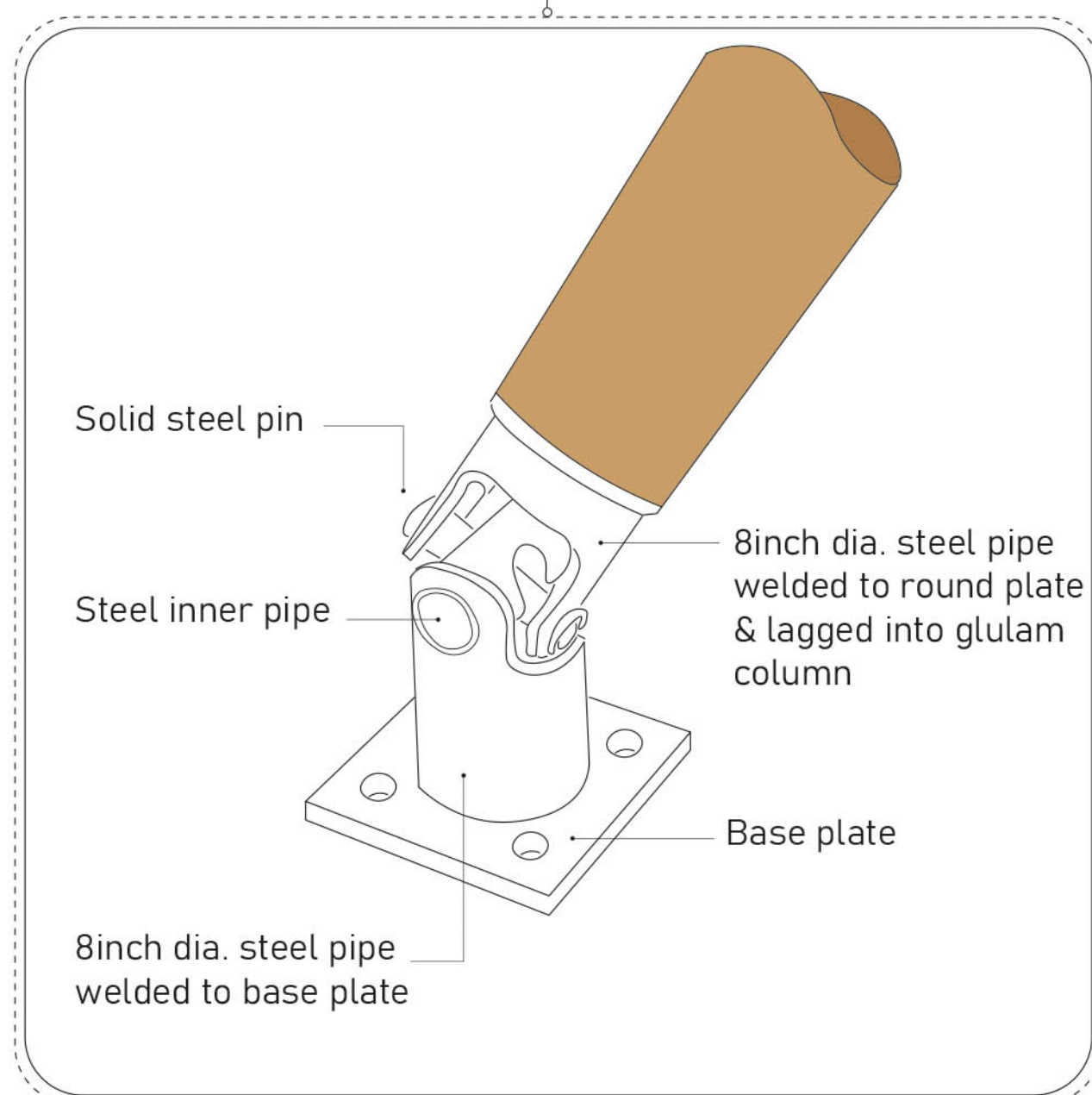
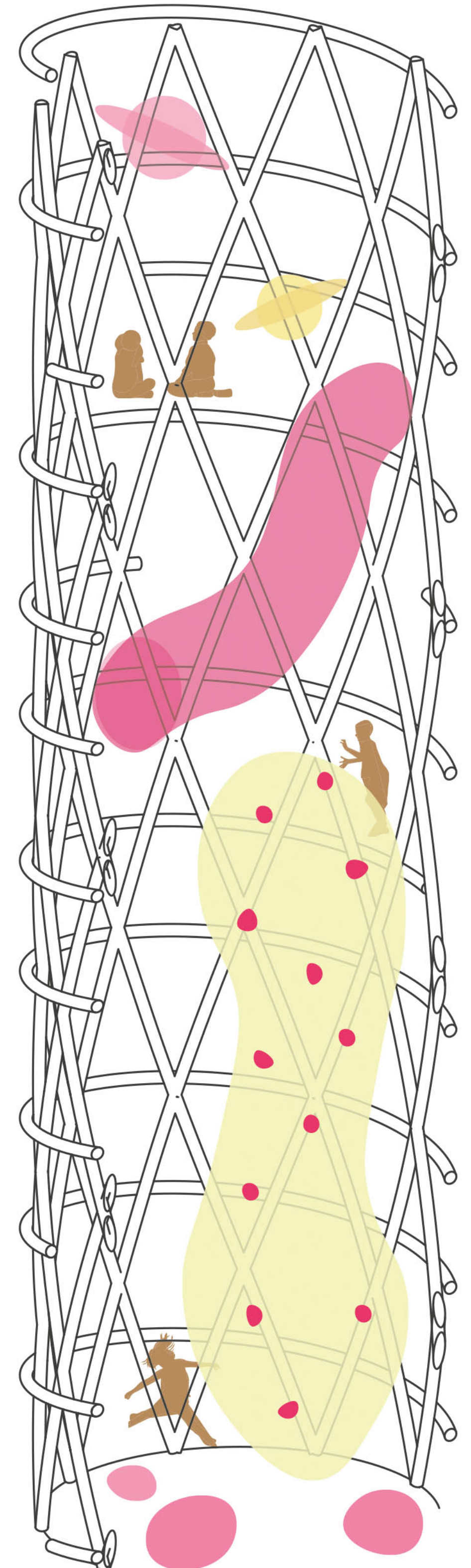
Diagrid inner structure



Seamless railing

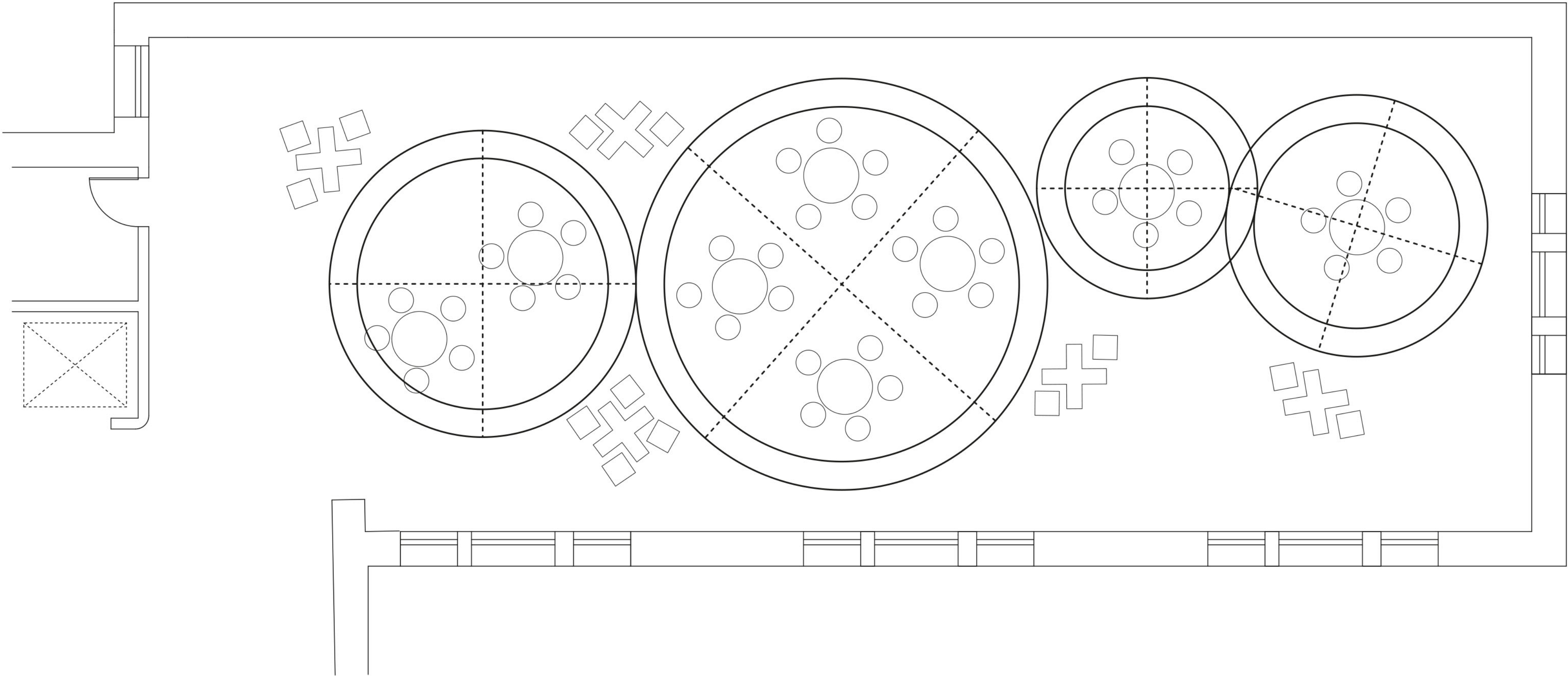


Opportunity for play



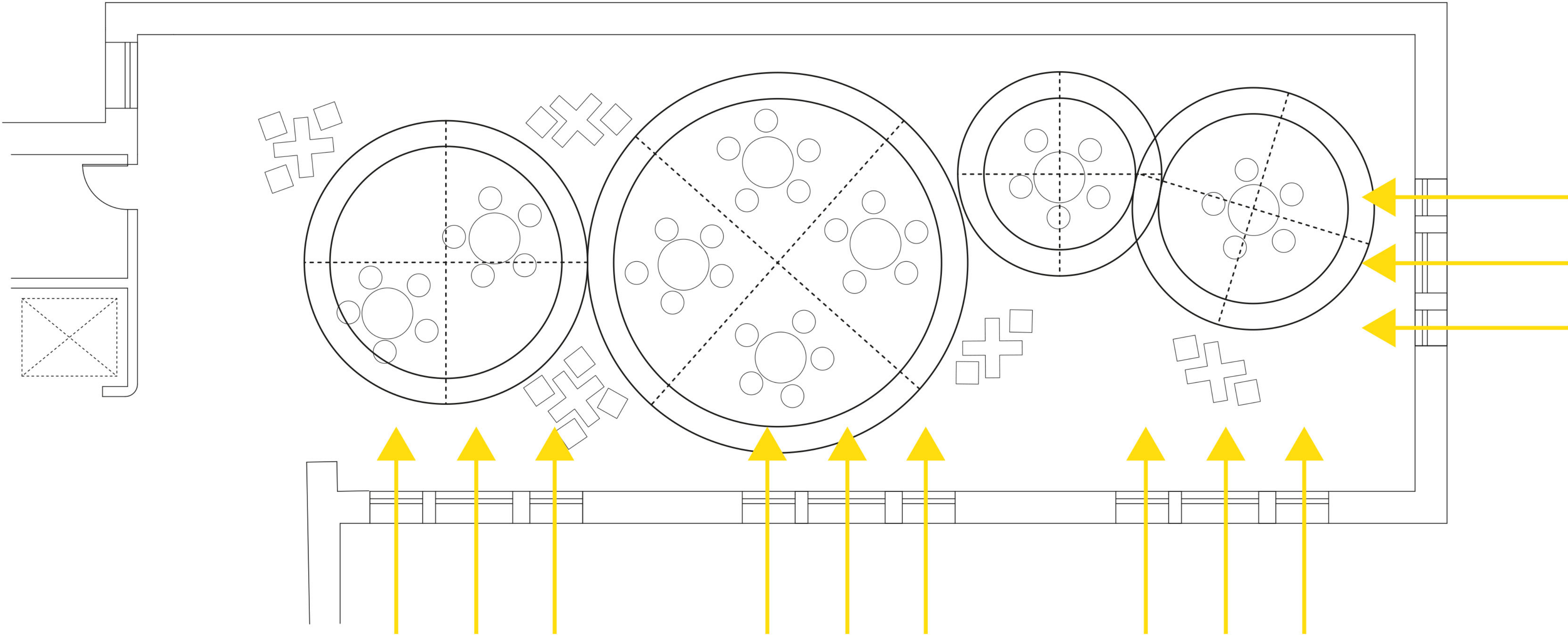
THE PODS

CONCEPT



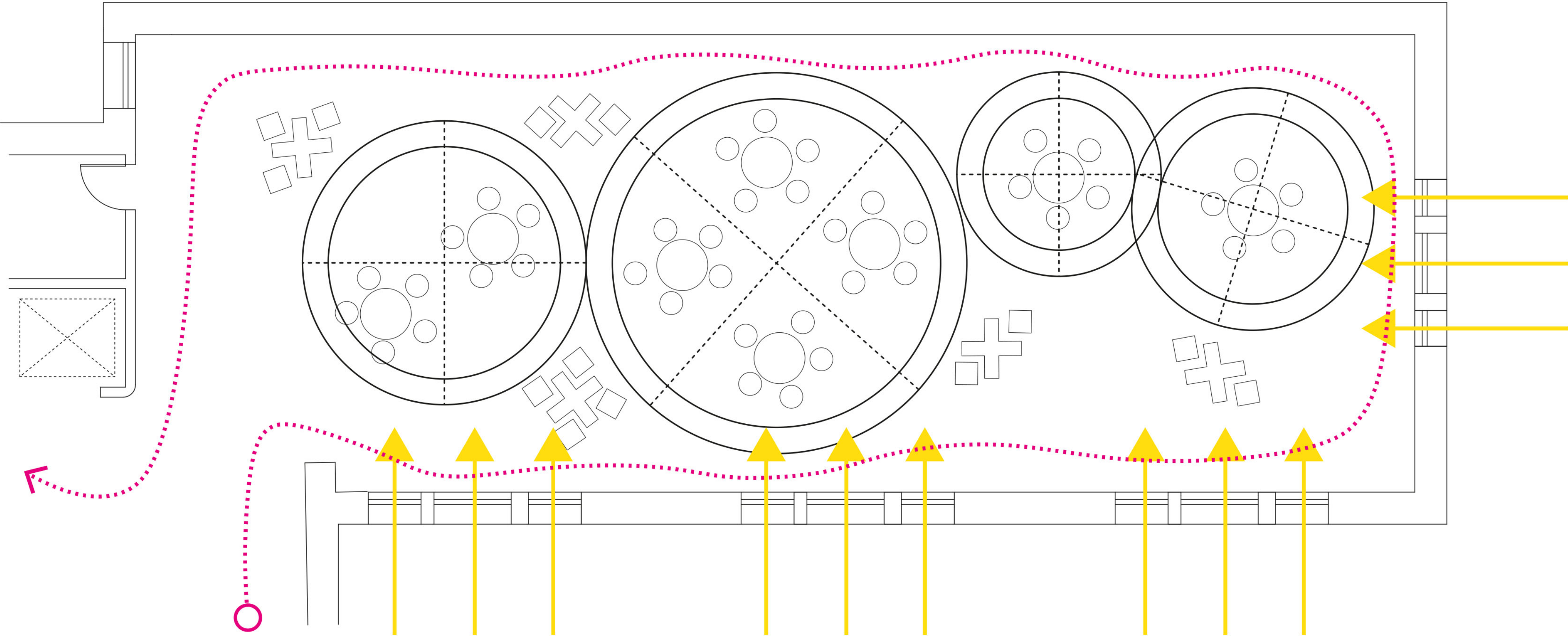
THE PODS

CONCEPT



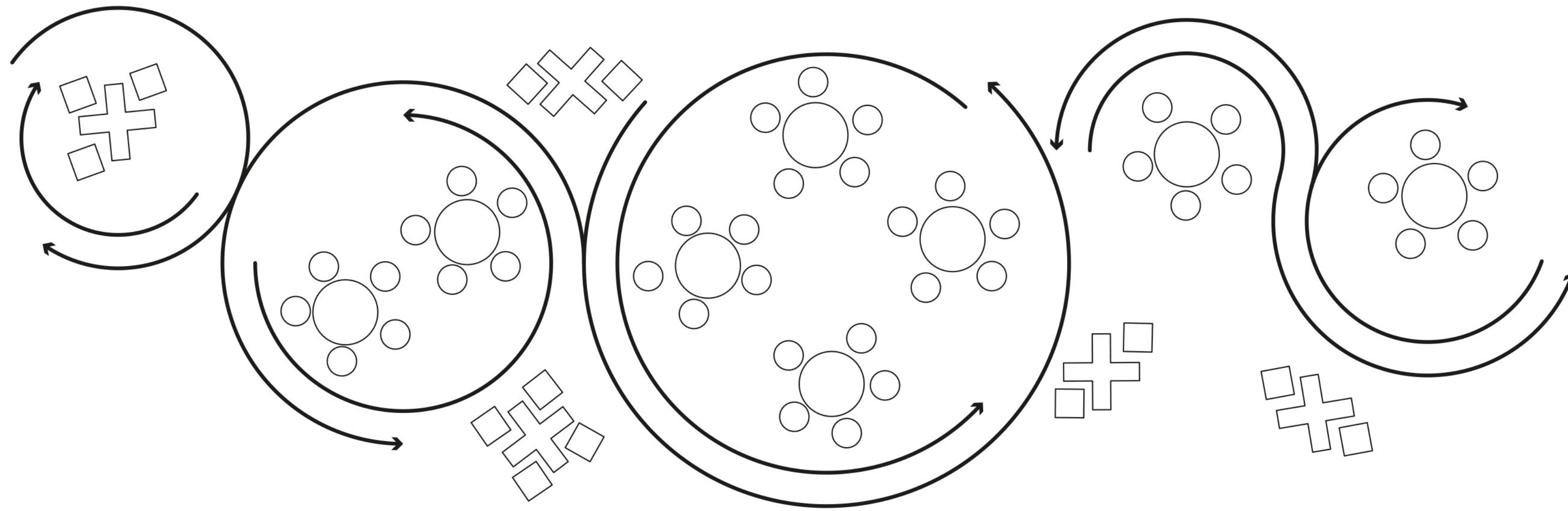
THE PODS

CONCEPT



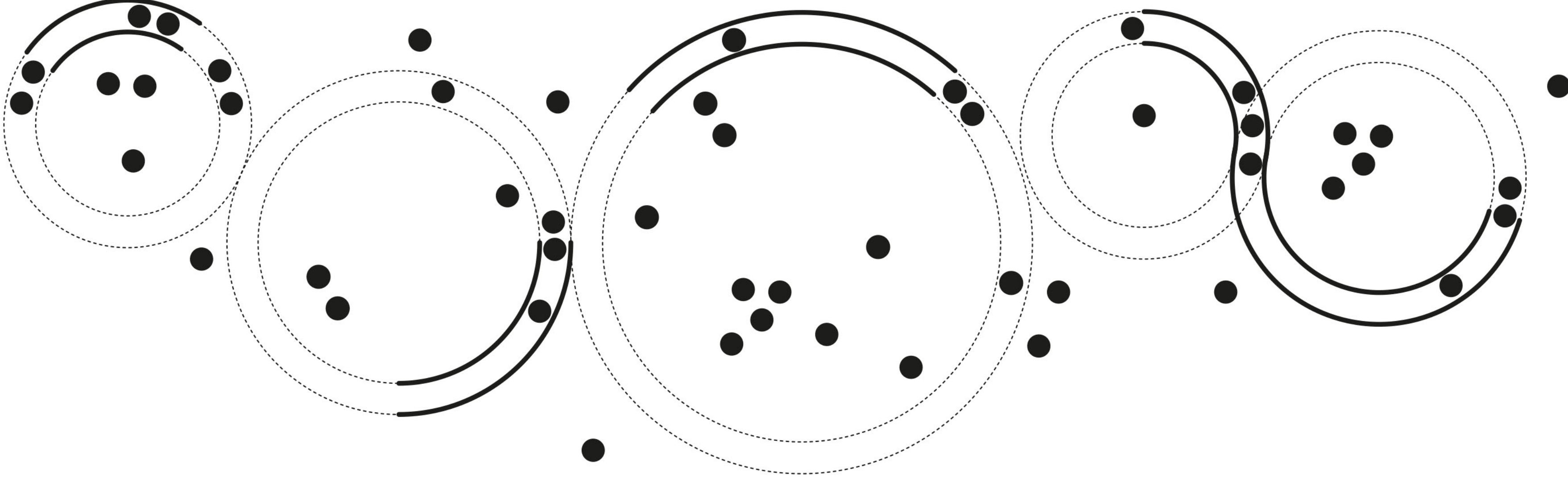
THE PODS

SLIDING PARTITIONS x OPEN PLAN



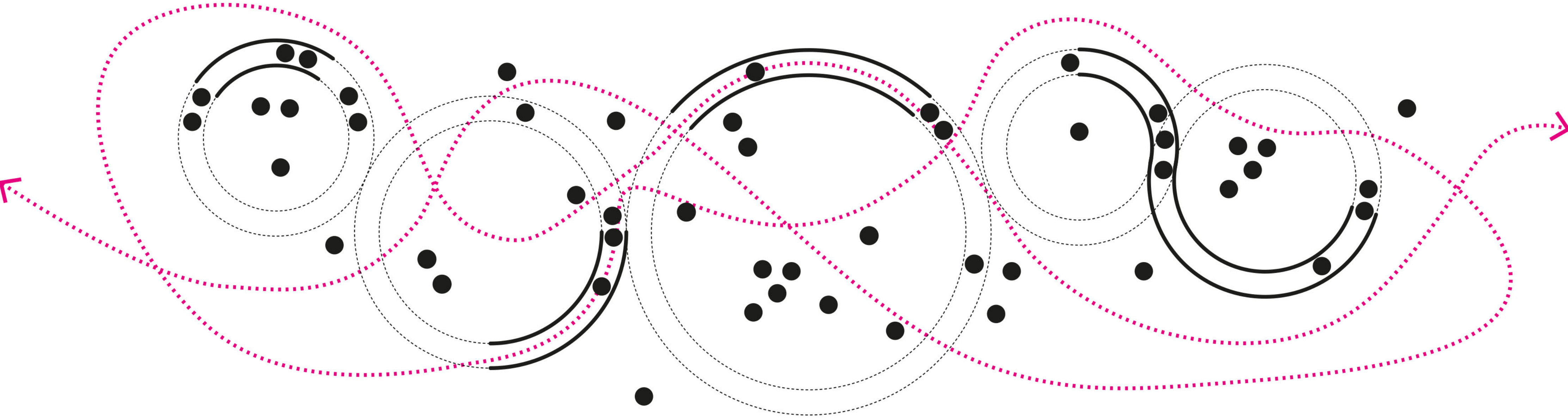
THE PODS

WALKWAY x PUBLIC GATHERINGS



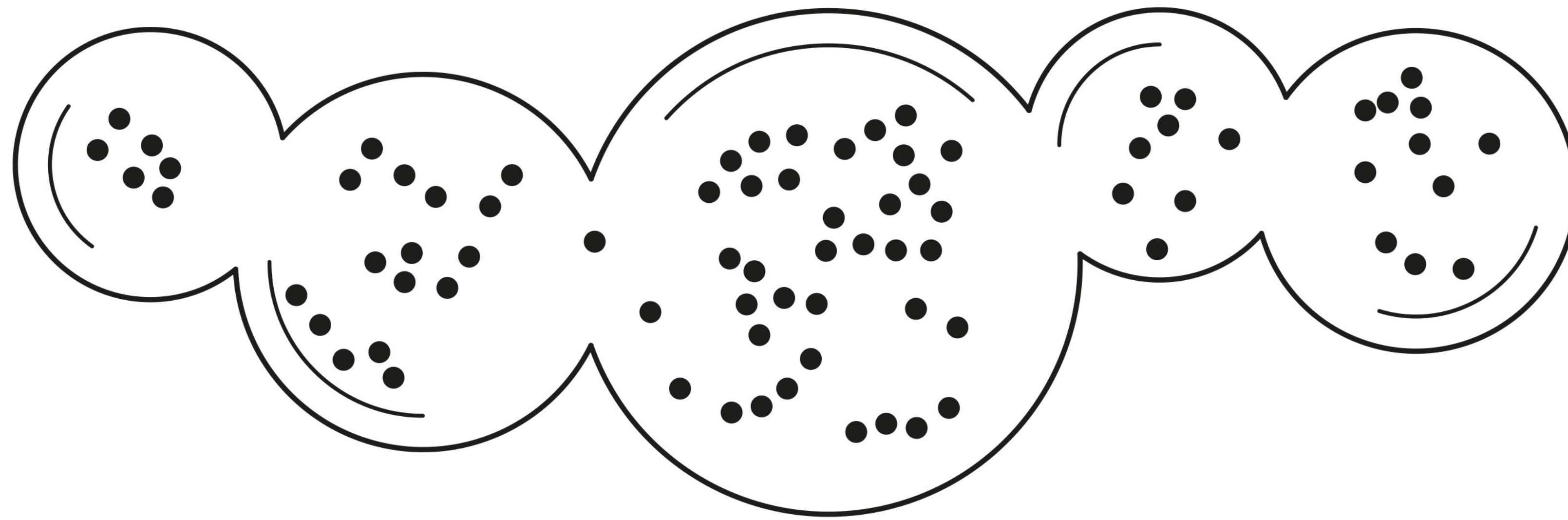
THE PODS

PRIVATE GATHERINGS

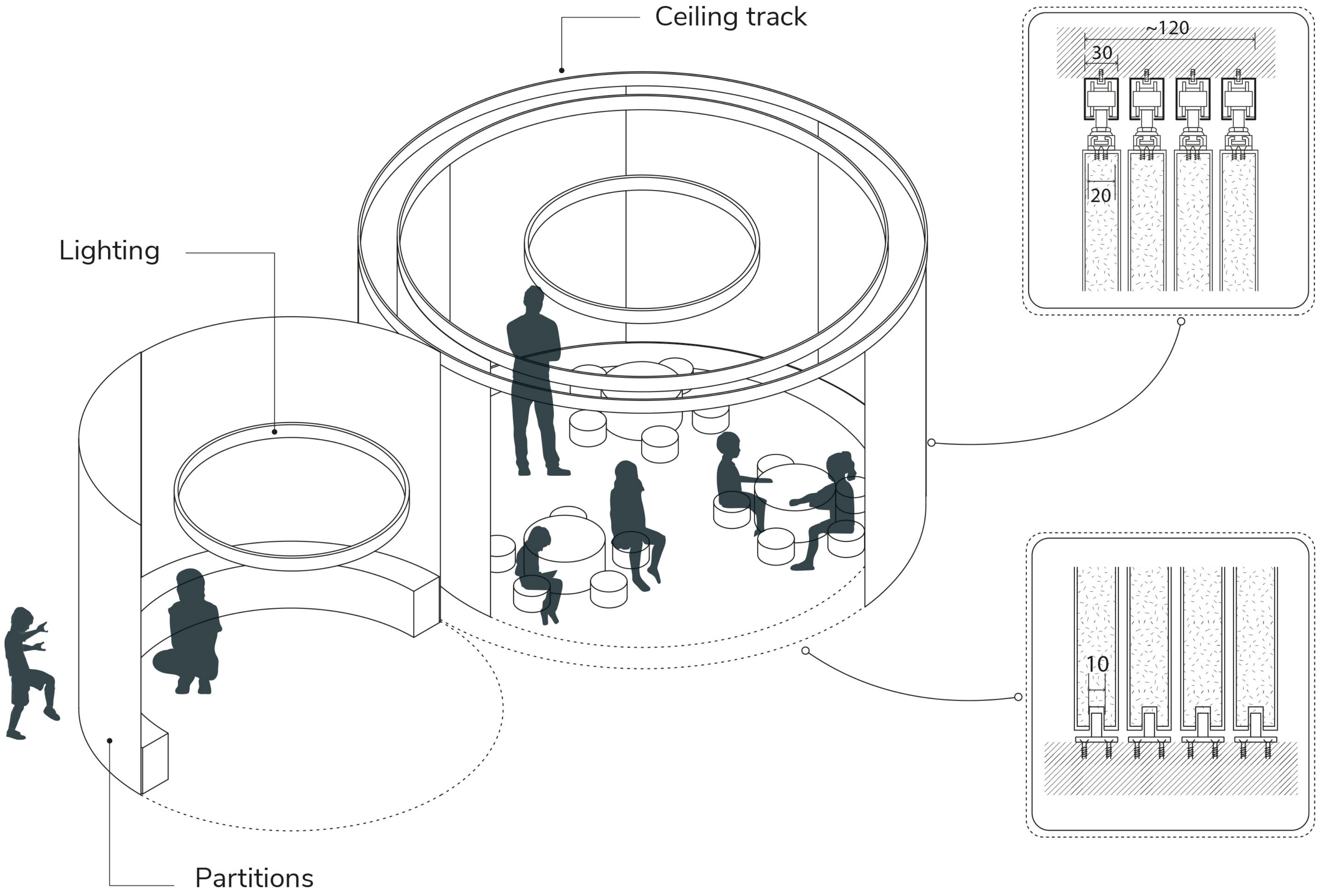


THE PODS

PRIVATE GATHERINGS



CLASSROOM



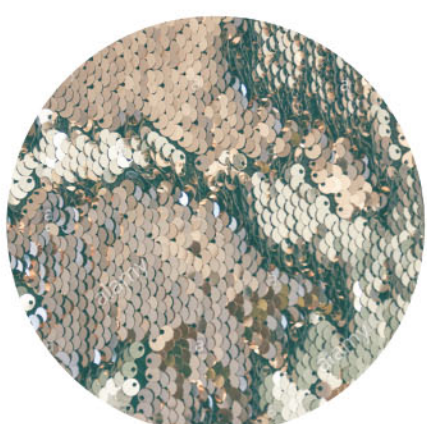
PARTITION CATALOGUE



Cotton



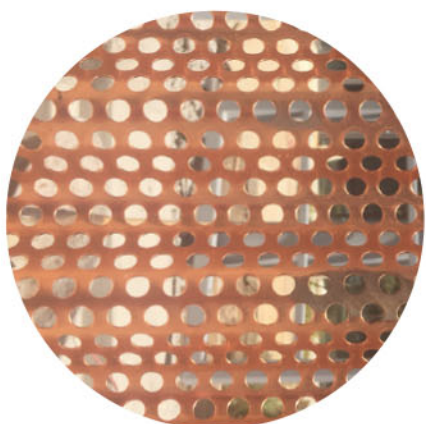
Translucent screen



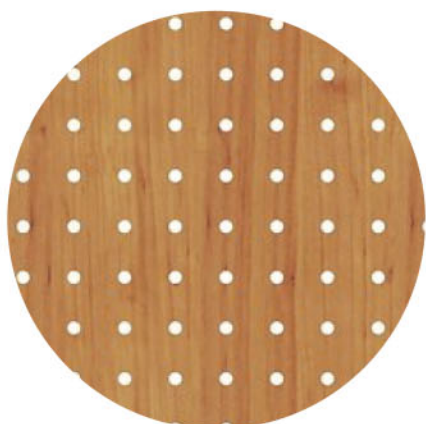
Sequin



Curtain

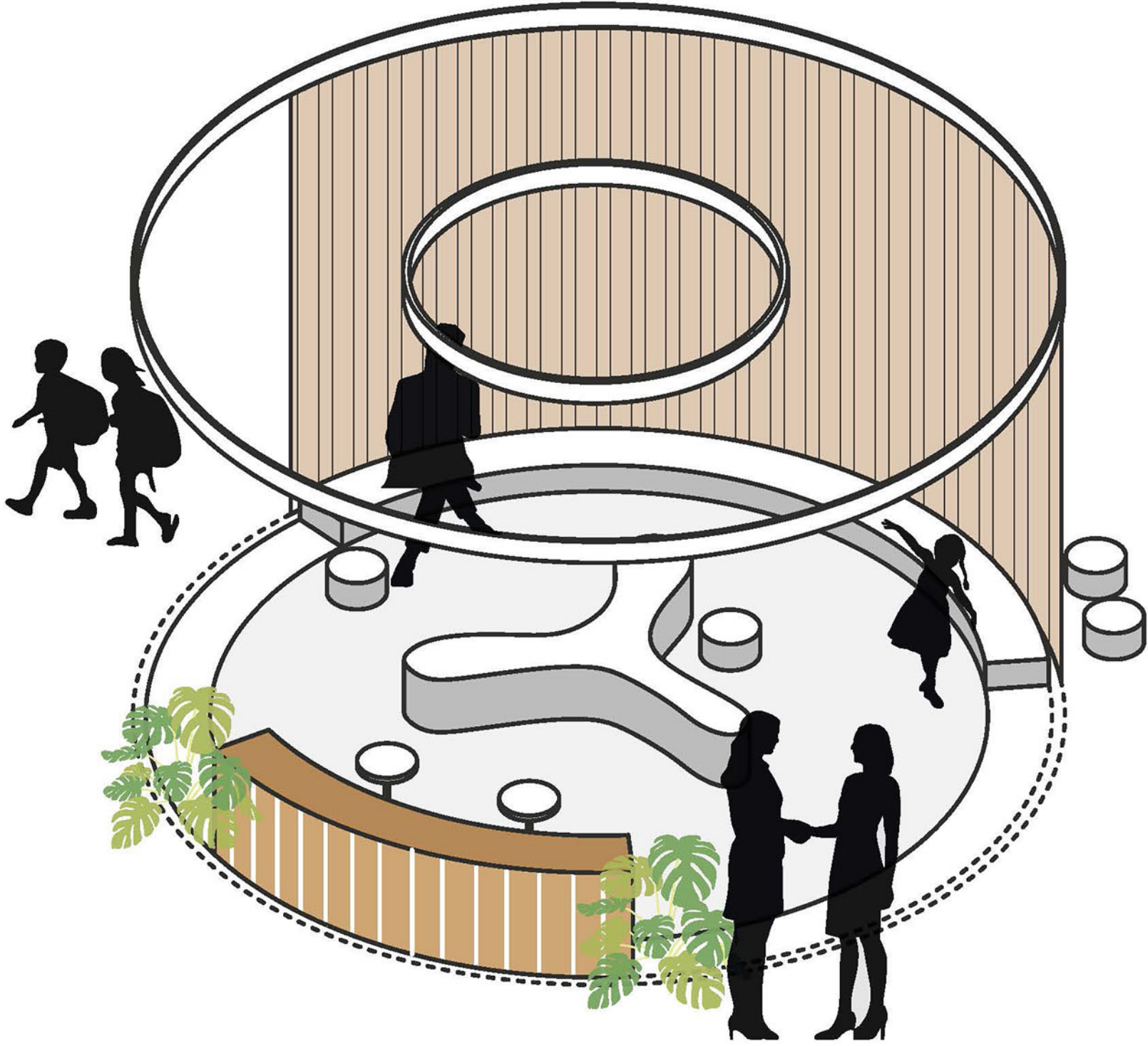


Perforated metal

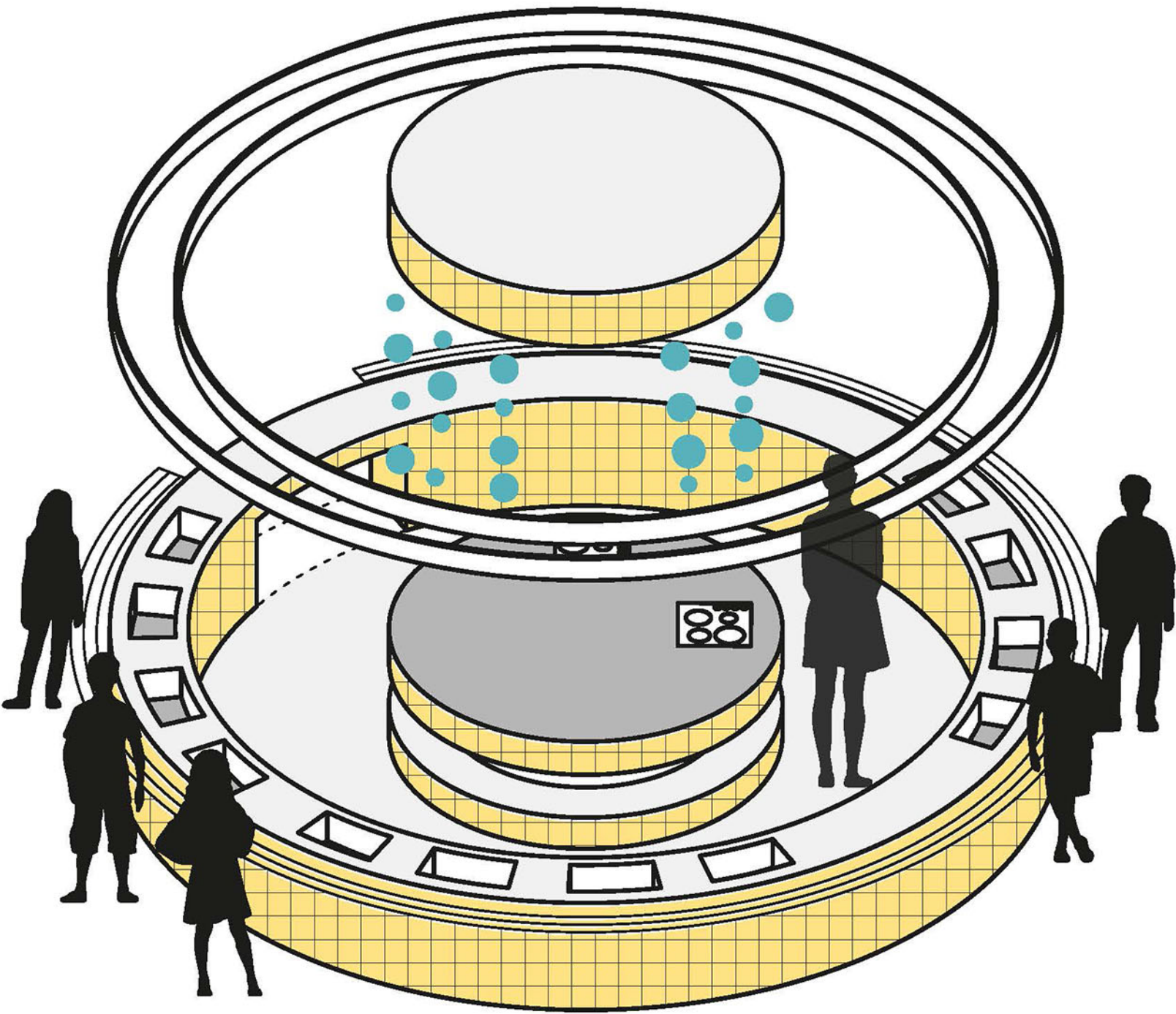


Perforated wood

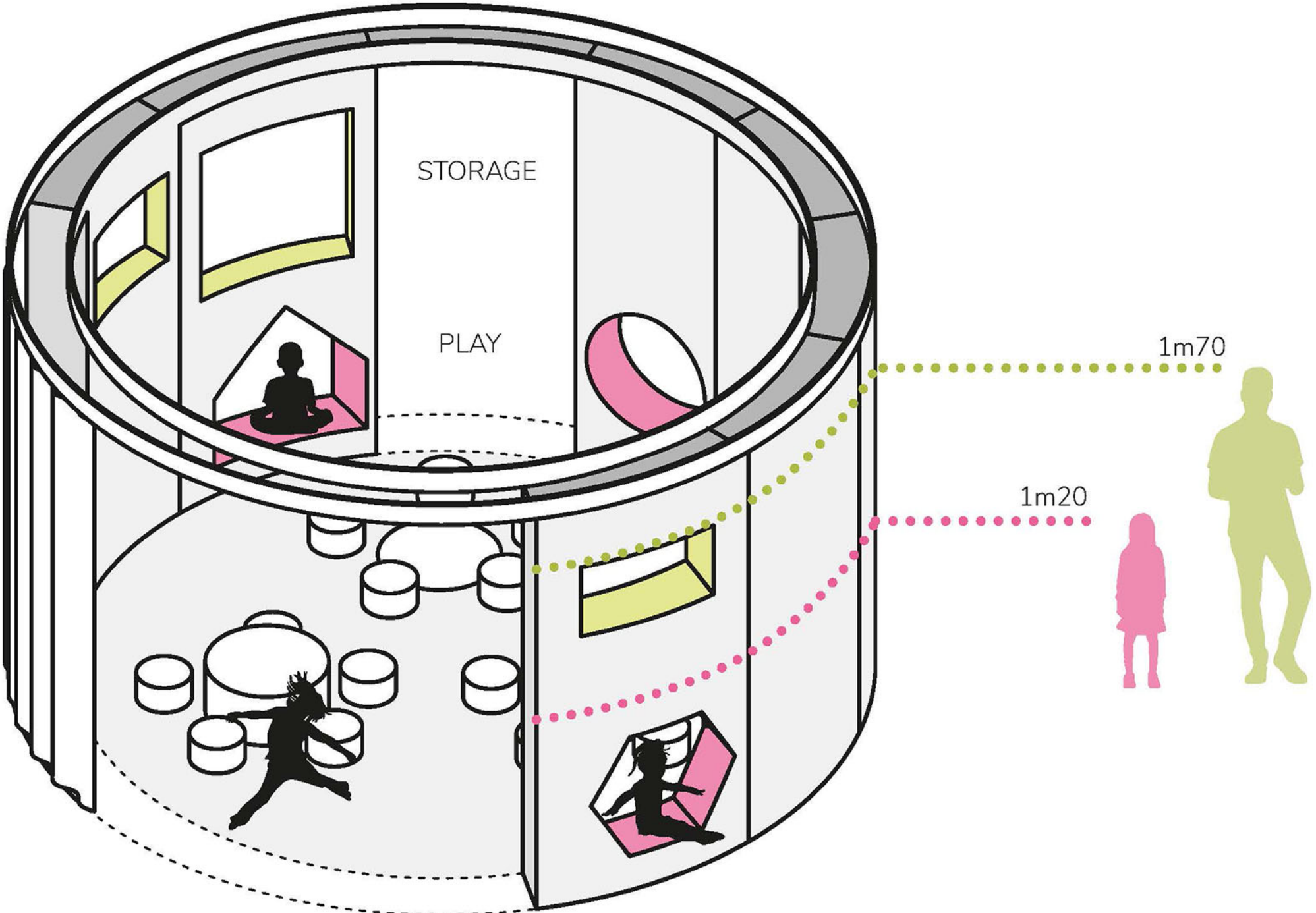
THE PODS



RECEPTION



CAFETERIA



CLASSROOMS

