

## *Energy in All Directions*

The Frances Young Tang Teaching Museum at Skidmore College

Saratoga Springs, New York

October 10, 2020–June 13, 2021

### Project List

\* indicates work that was on view in the gallery

\* Unrecorded artist(s)

North Family, Mount Lebanon, New York

Balance scale, c. 1800–1850

White pine, white ash, paint<sup>26</sup>

1/8 x 46 1/4 x 18 inches

Shaker Museum collection, 1966.15859.1



Unrecorded artist(s)

Canterbury or Enfield, New Hampshire

Basket, c. 1835

Black ash, oilcloth

23 5/8 x 40 5/8 x 30 1/8 inches

Shaker Museum collection, 1950.4164.1



Gary Batty

(8:q, 2005

Graphite on handmade paper<sup>29</sup>

7/8 x 22 1/4 inches

Tang Teaching Museum collection, purchased with funds

in honor of Morgan Leger Rosenberg, Class of 2009,

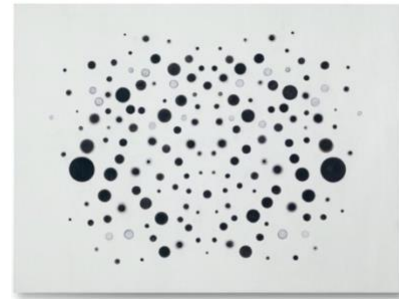
2010.8.1



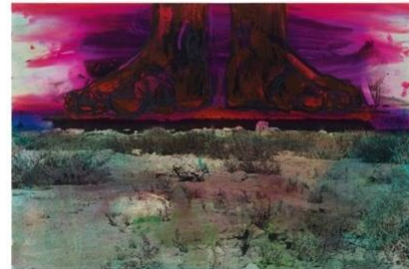
Gary Batty  
*I./I.*, 2005  
 Graphite on handmade paper 22  
 1/8 x 16 7/8 inches  
 Tang Teaching Museum collection, gift of Jamie  
 Cohen Hort and Peter Hort, 2020.24.1



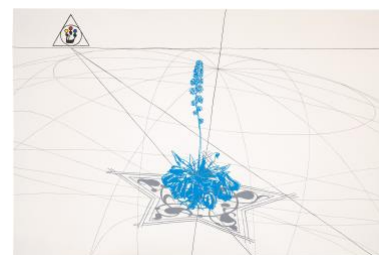
- \* Lisa Beck *Range*,  
 1996 Ink, oil on  
 panel  
 12 1/2 x 16 inches  
 Tang Teaching Museum collection, gift of JamesMark  
 Pedersen, 2019.10.2



Huma Bhabha  
*Untitled*, 2008  
 Ink on photograph  
 13 x 20 inches  
 Tang Teaching Museum collection, gift of Anne and  
 Arthur Goldstein, 2015.3.14



- \* Jesse Bransford  
*Flower/Trap*, 2003  
 Acrylic, ink, graphite on paper 36  
 3/8 x 52 7/8 inches  
 Tang Teaching Museum collection, gift of Eileen and  
 Michael Cohen, 2018.1.68



Dike Blair  
*Untitled (Billiard table with 3 balls)*, 1987 Watercolor  
 on paper  
 9 x 12 inches  
 Tang Teaching Museum collection, gift of the Hort  
 Family Collection, 2009.7.1



Dike Blair  
*Untitled*, 1990  
 Gouache and pencil on paper 7 x  
 10 inches  
 Extended loan to the Tang Teaching Museum from  
 Patti and Frank Kolodny



Mai Braun  
*NYT-Nov 16, 2007 (Pakistan), Version 2*, 2008 Tape and  
 paper on newspaper  
 14 1/2 x 15 1/4 inches  
 Tang Teaching Museum collection, gift of Jamie  
 Cohen Hort and Peter Hort, 2020.24.2



\* Alex Brown  
*Gate*, 2002 Oil  
 on canvas 60 x  
 80 inches  
 Tang Teaching Museum collection, gift of Patti and  
 Frank Kolodny, 2019.46.1



Alex Brown  
*Scorpio*, 1997  
 Oil on canvas  
 70 x 56 inches  
 Gift of Johanna Reinfeld Kolodny, in memory of  
 Hudson, Feature, Inc, 2015.37.8



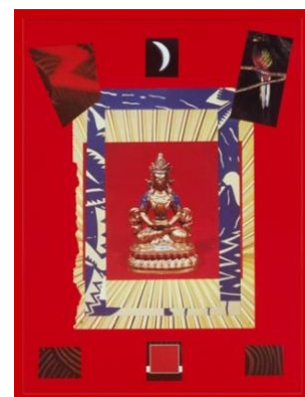
Alex Brown  
*Untitled*, 2001  
 Ink on paper  
 30 1/4 x 22 3/4 inches  
 Tang Teaching Museum collection, gift of  
 Johanna Reinfeld Kolodny, in memory of  
 Hudson, Feature, Inc, 2015.37.9



- \* Unrecorded artist(s)  
 Mount Lebanon, New York Candlestand,  
 1810–1850 Cherry, iron plate  
 24 7/8 x 14 1/2 x 14 1/2 inches Shaker  
 Museum collection, 1993.1.10



- \* Sarah Charlesworth  
*Super Buddha*, 1986  
 Cibachrome with lacquered wood  
 frame  
 42 x 32 inches  
 Courtesy of the Estate of the artist



Sarah Charlesworth

*Red Mask*, 1983

Cibachrome with lacquered wood frame 42 x  
32 inches

Courtesy of the Estate of the artist



Sarah Charlesworth

*Black Mask*, 1983

Cibachrome with lacquered wood frame 42 x  
32 inches

Courtesy of the Estate of the artist



- \* Unrecorded artist(s)  
South Family, Mount Lebanon, New York  
Child's highchair, 1880  
Cherry, hickory, tape, varnish 33  
x 16 3/4 x 15 1/4 inches  
Shaker Museum collection, 2007.26.100



- \* Unrecorded artist(s)  
Hancock, Massachusetts  
Cupboard over chest over cupboard, c. 1840 Pine  
82 1/2 x 37 7/8 x 18 3/4 inches  
Shaker Museum collection, 1961.14359.1



- \* Lucky DeBellevue  
*Untitled*, 2010  
Chenille stems  
74 x 29 x 29 inches  
Tang Teaching Museum collection, gift of Avo Samuelian  
and Hector Manuel Gonzalez, 2016.8.10



- \* Unrecorded artist(s)  
North Family, Watervliet, New York  
Double cupboard over double case of drawers, c. 1840  
Pine, iron, brass, ash, varnish 76  
5/8 x 62 1/2 x 23 1/4 inches  
Shaker Museum collection, 1950.596.1



- \* Jeanne Dunning  
*Head 8*, 1990  
Laminated Cibachrome on Plexiglas 30 x  
19 inches  
Tang Teaching Museum collection, gift of a private  
collection, 2001.9.9



- \* Unrecorded artist(s)  
Canterbury, New Hampshire "Elevator" or  
orthopedic shoe, c. 1900 Leather, metal,  
string, wool  
9 7/8 x 2 7/8 x 10 1/8 inches  
Shaker Museum collection, 1953.6199.1





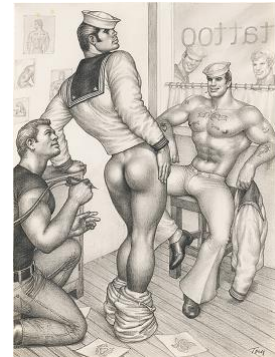
Tom of Finland  
*Strangers in the Night*, 1968  
Graphite on paper  
13 x 8 11/16 inches  
Collection of Jack Shear



Tom of Finland  
*Untitled*, 1980  
Graphite on paper  
12 x 8 7/8 inches Collection of Jack Shear



Tom of Finland  
*Untitled*, 1980  
Graphite on paper  
12 x 8 7/8 inches  
Collection of Jack Shear



- \* Jason Fox *Untitled*,  
1998 Acrylic on  
canvas 30 x 24  
inches  
Tang Teaching Museum collection, gift of James Mark  
Pedersen, 2019.10.3



- \* Unrecorded artist(s)  
South Family, Mount Lebanon, New York  
Firewood box, c. 1825–1850  
White pine, paint, iron  
20 1/2 x 30 7/8 x 20 inches  
Shaker Museum collection, 2016.5.24



Tom Friedman  
*Untitled*, 1991  
Pillow stuffing  
20 x 30 x 30 inches  
Collection of Eileen and Michael Cohen



- \* Sam Gordon  
*Untitled*, 1997  
Oil, acrylic, enamel, spray paint, ink, graphite, silverleaf  
24 x 24 inches  
Tang Teaching Museum collection, gift of Jamie and Peter Hort, 2020.24.5



- \* Sam Gordon  
*Southern Cross*, 2002  
Graphite, ink, acrylic, enamel, spray paint, gold leaf, silver leaf on paper  
72 x 84 inches  
Tang Teaching Museum collection, gift of Eileen and Michael Cohen, 2018.1.74





Daniel Hesidence  
*Untitled (Chambers Street Paintings)*, 2003 Oil on wood  
 14 1/4 x 15 1/2 inches  
 Tang Teaching Museum collection, gift of Jamie Cohen Hort and Peter Hort, 2020.24.6



- \* Elvira Curtis Hulett (attributed)  
 Church Family, Hancock, Massachusetts  
 Multicolored knitted rug, c. 1893 Knitted fabric, cotton  
 56 3/4 x 56 3/4 inches  
 Shaker Museum collection, 1957.8574.1



- \* Jim Isermann  
*Untitled*, 1987  
 Enamel on wood  
 48 x 48 inches  
 Tang Teaching Museum collection, gift of Eileen and Michael Cohen, 2018.1.61



G.B. Jones *Skateboard*  
*Girls*, 1990 Graphite on paper  
 8 1/2 x 6 1/2 inches  
 Promised gift to the Tang Teaching Museum from Sam Gordon, 2020.50



- \* Unrecorded artist(s)  
Knit chair cushion in multicolored pinwheel design, 20th century  
Canterbury, New Hampshire  
Knit and crocheted yarn  
15 1/4 x 15 1/4 inches  
Shaker Museum collection, 1955.7270.1



- Unrecorded artist(s)  
Multicolored knit cushion with spiral pattern, c. 1953  
Canterbury, New Hampshire  
Knit, coiled, and stitched wool yarn  
14 x 14 inches  
Shaker Museum collection, 1953.6217.1



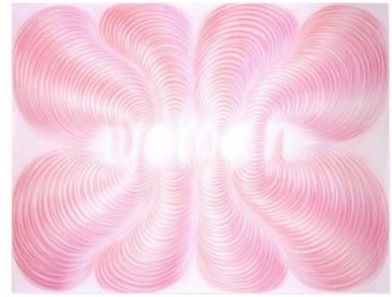
- \* Richard Kern  
Lucy, 2012  
Chromogenic print  
17 1/4 x 11 1/2 inches  
Tang Teaching Museum collection, gift of Jamie Cohen Hort and Peter Hort, 2020.24.7



- \* Bill Komoski  
12/2/05, 2005  
Gouache, graphite on paper  
16 x 12 1/4 inches  
Tang Teaching Museum collection, purchased with funds in honor of Morgan Leger Rosenberg, Class of 2009, 2010.8.3



- \* Kinke Kooi  
*Woman*, 2000  
Colored pencil on paper 24  
x 31 inches Collection of  
Jack Shear



- \* Kinke Kooi  
*Man*, 2000  
Acrylic, colored pencil on paper 22  
1/2 x 30 1/4 inches Collection of  
Jack Shear



- \* Michael Lazarus  
*Again*, 1999  
Oil, enamel on panel 78  
x 72 inches  
Tang Teaching Museum collection, purchased with funds in  
honor of Morgan Leger Rosenberg, Class of 2009, 2010.8.17



- \* Judy Linn  
*Hudson*, 2005  
Digital inkjet print  
11 1/8 x 17 3/8 inches  
Tang Teaching Museum collection, gift of an  
anonymous donor, 2019.55



Andrew Masullo  
 5784, 2013–2014  
 Oil on canvas  
 24 x 30 inches  
 Tang Teaching Museum collection, gift of the artist and  
 Nicelle Beauchene Gallery, 2020.8



- \* Roy McMakin  
*Two Chests: One with No Knobs, One with Slightly Oversized Drawers*, 2001  
 Enamel on wood  
 Dimensions variable  
 Tang Teaching Museum collection, gift of Eileen and  
 Michael Cohen, 2018.1.60a-i



- \* Roy McMakin  
*Staircase with railing*, 2000  
 Wood, paint  
 89 x 73 x 30 inches  
 Collection of Sam Gordon



- \* Douglas Melini  
*The Forms of Thought*, 2010  
 Acrylic on canvas with painted wooden frame  
 1/2 x 45 1/2 inches  
 Tang Teaching Museum collection, gift of Eileen and  
 Michael Cohen, 2018.37.9



- \* Unrecorded artist(s)  
Sabbathday Lake, Maine  
Modified side chair used for weaving at a loom,  
1875–1899  
Maple, white pine, tape  
42 3/4 x 19 3/8 x 19 1/4 inches  
Shaker Museum collection, 1952.5252.1



- \* David Moreno  
*Silence*, 1995 Book  
pages, paper  
Dimensions variable  
Tang Teaching Museum collection, gift of Eileen and  
Michael Cohen, 2018.1.73.1-30



- \* David Moreno  
*The Sun is Old and He's Falling*, 1994 Oil,  
pigments, plaster on polyester 84 1/8 x  
54 x 1 5/8 inches  
Gift of Peter Norton, 2014.7.1



- \* Lillian Mulero  
*Title unknown*, 1992  
Oil on canvas  
35 1/2 x 25 3/4 inches  
Tang Teaching Museum collection, gift of the artist,  
ED2016.1.194

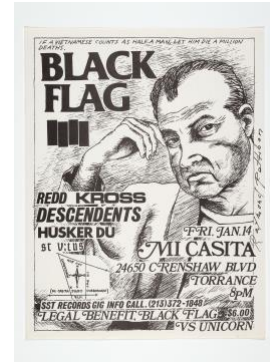




Lillian Mulero  
*Untitled Mirror*, 1991  
 Aluminum leaf and oil on canvas  
 40 1/8 x 25 1/2 x 1 7/8 inches  
 Tang Teaching Museum collection, gift of the artist,  
 ED2016.1.192



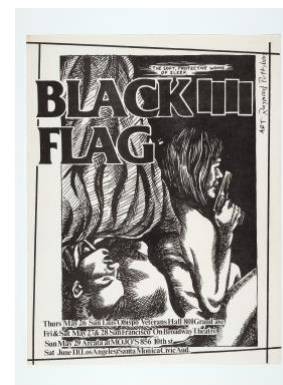
Raymond Pettibon,  
*Black Flag at Mi Casita*, 1983  
 Offset lithograph on paper 11 x  
 8 1/2 inches  
 Tang Teaching Museum collection, acquisition made possible  
 through a gift of the Steven Leiber Trust (Mitchell Leiber, David  
 Leiber, Elen Markopoulos, Paul Leiber, and Eleanor Cutler),  
 2017.17.49



Raymond Pettibon  
*Black Flag at Ukrainian Hall*, 1982  
 Offset lithograph on paper  
 8 1/2 x 5 1/2 inches  
 Tang Teaching Museum collection, acquisition made possible  
 through a gift of the Steven Leiber Trust (Mitchell Leiber, David  
 Leiber, Elen Markopoulos, Paul Leiber, and Eleanor Cutler),  
 2017.17.57



Raymond Pettibon  
*Black Flag The Soft, Protective Womb of Sleep*, 1983  
 Offset lithograph on paper 11  
 x 8 1/2 inches  
 Tang Teaching Museum collection, acquisition made possible  
 through a gift of the Steven Leiber Trust (Mitchell Leiber, David  
 Leiber, Elen Markopoulos, Paul Leiber, and Eleanor Cutler),  
 2017.17.48





Richard Pettibone *Slowness  
is Beauty*, 1992 Painted  
maple  
96 x 13 1/4 x 1 1/8 inches  
Dallas Museum of Art, gift of Hudson and Feature Inc.,  
NY, 2004.43.1



Richard Pettibone  
*Shaker Chair*, 1974  
Oil on canvas  
4 1/4 x 4 3/8 inches  
Collection of the Speed Art Museum, Louisville,  
Kentucky, gift of Hudson, Feature Inc., 2009.2.5



Richard Pettibone  
*The Temple is Holy*, 1987  
Stained wood  
25 1/4 x 26 x 7 1/2 inches  
Tang Teaching Museum collection, gift of Patti and Frank  
Kolodny, 2008.12.6a-b



- \* Joshua Podoll  
*A Welcome End to Knowing*, 2003  
Acrylic on canvas  
16 x 20 inches  
Tang Teaching Museum collection, gift of Jamie and Peter Hort,  
2020.24.9



Charles Ray  
*Plank piece I & II*, 1973  
 Two black-and-white photographs mounted on ragboard  
 39 1/2 x 27 inches (each)  
 Courtesy of Matthew Marks Gallery



Charles Ray  
*Untitled (bench)*, 1974  
 Wood  
 11 1/2 x 120 x 1 3/4 inches  
 Courtesy of Matthew Marks Gallery



\* Richard Rezac  
*Nemaha*, 2010  
 Nickel-plated cast bronze  
 14 1/2 x 9 1/4 x 3 inches  
 Promised gift to the Tang Teaching Museum from  
 Kate Neisser



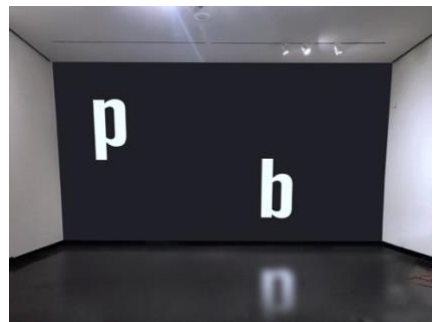
David Robbins  
*Comic Object/Movable Corner/Portable Dilemma*, 1992  
 Painted wood, paint can, paint brush, plaque on casters  
 32 1/2 x 30 3/4 x 30 3/4 inches  
 Tang Teaching Museum collection, gift of a private  
 collection, 2001.9.2



- \* Nathaniel Robinson  
*Distribution*, 2010  
 Tinted polyurethane resin  
 Installation dimensions vary  
 Tang Teaching Museum collection, gift of  
 Jamie and Peter Hort, 2020.24.10



- \* Kay Rosen  
*Phantom Limb*, 1993/2020  
 Acrylic paint  
 Installation dimensions vary  
 Courtesy of the artist



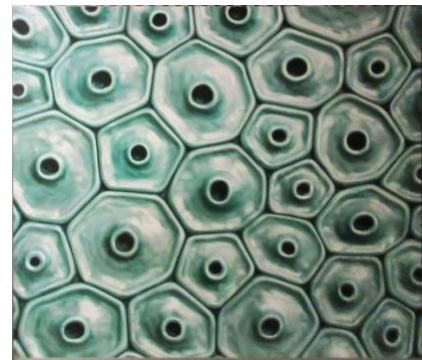
- Kay Rosen  
*Untitled*, 1999  
 Paint on paper  
 22 5/8 x 17 5/8 x 1 1/8 inches  
 Tang Teaching Museum collection, gift of a Private  
 Collection, 2019.15.2.5



- \* Alexander Ross  
*Untitled*, 2008-2009  
 Oil on canvas  
 43 x 58 1/8 inches  
 Tang Teaching Museum collection, gift of Patti and  
 Frank Kolodny, 2019.46.12



- \* Alexander Ross  
*Untitled*, 1996  
 Oil on canvas 52  
 x 60 inches  
 Tang Teaching Museum collection, gift of Johanna  
 Reinfeld Kolodny, in memory of Hudson, Feature, Inc.,  
 2015.37.10



- Jimmy DeSana  
*Portrait of William Burroughs*, 1977  
 Gelatin silver prints on mat board 20  
 1/4 x 26 7/8 inches  
 Promised gift to the Tang Teaching Museum from  
 Jack Shear



- \* Raja Babu Sharma  
*Tantric Painting #582*, 1988  
 Gouache on paper  
 9 x 7 inches  
 Promised gift to the Tang Teaching Museum from Joan  
 and Michael Salke



- \* Nancy Shaver  
*Broken Leg Series #7*, 2000  
 House paint, charcoal, graphite, collage on paper 14 x  
 16 3/4 inches  
 Tang Teaching Museum collection, gift of Eileen and  
 Michael Cohen, 2018.1.5



- \* Nancy Shaver  
*Cross Section of a Stem*, 2007  
Plastic  
6 1/4 x 21 1/8 x 16 1/8 inches Collection  
of Steve Shane, New York



- \* Nancy Shaver  
*X*, 1991  
Acrylic on paper, found frame21  
1/2 x 16 1/2 inches  
Tang Teaching Museum collection, gift of James  
M. Pedersen, New York, 2008.7.10



- \* Nancy Shaver  
*Untitled # 1*, 2000  
Wooden box, paper, house paint, fabric,  
vegetable oil  
9 3/4 x 15 1/2 x 6 inches  
Tang Teaching Museum collection, gift of Pattiand  
Frank Kolodny, 2019.46.14



- \* Jim Shaw  
*Dream Drawing (3 Dreams: There was a  
Performance...)*, 1993  
Pencil on paper 12  
x 8 7/8 inches  
Tang Teaching Museum collection, gift of PeterNorton,  
2015.26.18



- \* Jim Shaw  
*Untitled (Atomic Test House)*, 1991  
Pencil on paper  
18 x 15 1/8 inches  
Tang Teaching Museum collection, gift of Peter Norton, 2019.48.2



- \* Unrecorded artist(s)  
South Family, Mount Lebanon, New York  
Side chair, c. 1890  
Maple, bamboo, lacquer  
22 7/8 x 13 1/4 x 11 1/8 inches  
Shaker Museum collection, 2007.6.1



- \* Unrecorded artist(s)  
Mount Lebanon, New York, or Hancock, Massachusetts  
Two-drawer side table, mid-19th century  
Cherry, maple, tulip poplar, varnish  
29 x 21 1/2 x 16 5/8 inches  
Shaker Museum collection, 2016.5.20

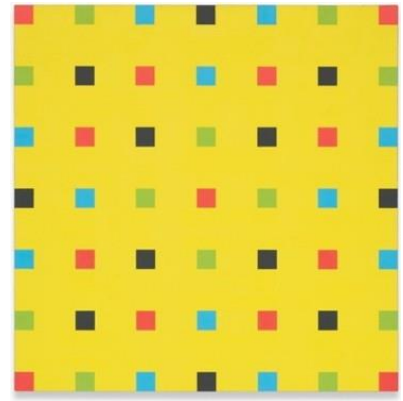


- Aaron Sinift  
*Five Year Plan*, 2010  
Silkscreen and woodblock print on hand sewn clothbook  
13 1/8 x 13 1/2 x 1 3/4 inches  
Tang Teaching Museum collection, gift of Jamie Cohen Hort and Peter Hort, 2020.24.11





- \* Cary Smith  
*Tell Me More*, 1987  
 Oil on canvas  
 42 3/8 x 42 3/8 inches  
 Tang Teaching Museum collection, gift of the Hort  
 Family Collection, 2009.7.9



- \* Unrecorded artist(s)  
 Canterbury, New Hampshire  
 Step stool, mid-19th century  
 White pine  
 18 3/8 x 13 x 14 3/4 inches  
 Shaker Museum collection, 1954.6942.1



- \* Unrecorded artist(s)  
 Canterbury, New Hampshire  
 Storage box, c. 1850  
 Inscribed by several Shaker sisters:  
 "Lucy A. Shepard / given by / Eldress Betsy Bates in 1869  
 / Given by Eld. L.A.S. / to Jessie, Oct. 1925. / Given to Eld.  
 E.B. King / Nov. 1935"  
 Maple, white pine, copper, varnish 8 x  
 13 3/8 x 9 3/8 inches  
 Shaker Museum collection, 1953.6552.1a-b



- \* Unrecorded artist(s)  
 Church Family, Mount Lebanon, New York  
 Storage box, mid-19th century  
 Maple, white pine, copper  
 5 5/8 x 13 1/2 x 9 3/8 inches  
 Shaker Museum collection, 1950.322.1a-b



- \* Unrecorded artist(s) Canterbury,  
New Hampshire Storage box,  
mid-19th century  
Inscribed "Josephine Elie Ware(?) / 6th of  
December, 1860"  
Maple, copper, white pine, paint4  
1/4 x 11 3/8 x 8 inches  
Shaker Museum collection, 1954.6743.1a-b



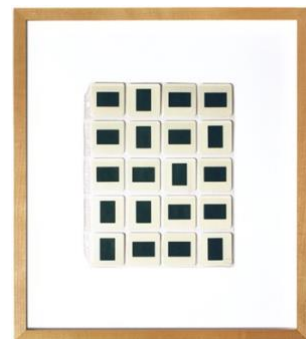
- \* Unrecorded artist(s)  
Mount Lebanon, New York  
Storage box, mid-19th century  
Inscribed "Emma B. King / Canterbury Shakers /  
Canterbury, New Hampshire"  
Maple, white pine, copper, varnish3  
3/8 x 9 x 6 inches  
Shaker Museum collection, 1992.1.27a-b



- \* Unrecorded artist(s)  
North Family, Mount Lebanon, New York  
Swarm box, c. 1860  
Pine, basswood, paint, linen, oak, walnut18  
7/8 x 13 1/2 x 14 inches  
Shaker Museum collection, 1950.2727.1



Tony Tasset  
*Untitled*, 1989  
Slide sheets, slides, pigment20  
1/2 x 17 1/2 inches  
Tang Teaching Museum collection, gift of James M.  
Pedersen, New York, 2008.7.1



- \* John Torreano  
*Eye Bomb*, 2000  
 Wood, Krylon paint, acrylic gems, wood balls  
 10 1/2 x 10 1/2 x 10 inches  
 Collection of Steve Shane, New York



Unrecorded artist(s)  
 North Family, Mount Lebanon, New York  
 Table or umbrella swift, c. 1865  
 Inscribed "Miss Annie Belle Tuttle / North Family  
 Shakers / New Lebanon, N.Y. P-11-42"  
 Maple, elm, iron or steel, string  
 27 x 27 x 3/4 inches (open)  
 Shaker Museum collection, 1957.8319.1a



- \* Unrecorded artist(s)  
 South Family, Mount Lebanon, New York  
 Walker, 1875–1900  
 Maple  
 23 1/8 x 17 3/8 x 32 1/2 inches  
 Shaker Museum collection, 1958.10738.1



- \* Sister Jennie Wells  
 Hancock, Massachusetts  
 Table mat, 1952  
 Wool flannel  
 16 1/2 x 12 3/4 inches  
 Shaker Museum collection, 1953.6116.1



- \* Unrecorded artist(s)  
Mount Lebanon, New York  
Wheelchair, 1830  
Birch, maple, beech, ash, oak, copper, iron, brass,  
chestnut, walnut  
47 1/4 x 26 x 27 1/4 inches  
Shaker Museum collection, 1957.8417.1



- \* B. Wurtz  
*Green Glass and Green Bowl*, 1998  
Painted wood  
11 1/4 x 18 x 5 inches  
Tang Teaching Museum collection, gift of JamieCohen  
Hort and Peter Hort, 2020.24.12



- B. Wurtz  
*Untitled (life painting)*, 1990  
Acrylic on paper  
11 x 9 inches  
Tang Teaching Museum collection, gift of Andrea  
Rosen, 2017.46.9

