

The Green Book

This guide is a way to allow continuing students, faculty and staff to pass on information and advice about student life, school life and living in New York City.

This guide is by no means comprehensive—it serves as a supplement to the information available on the GSAPP website and any official information you receive about courses and registration from the GSAPP administration.

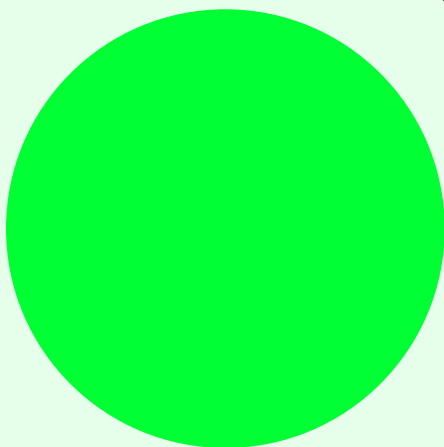




Table of Contents

ACADEMIC CALENDAR	4-5	COLUMBIA UNIVERSITY	
		CAMPUS MAP	45
SCHOOL PROGRAMS		IDS, STUDY LOCATIONS	46
M.ARCH	6	HEALTH, WRITING, ETC.	47
MS AAD	7	SAFETY + WELL-BEING	47-48
MS HISTORIC PRESERVATION	8	EATING ON CAMPUS	50
MS CCCP	9	SERVICES CLOSE-BY	51
MS URBAN PLANNING	10		
MS UD	11	OFF-CAMPUS	
MS RED	12	SERVICES	53
RELATED PROGRAMS	13	OFF-CAMPUS DINING	54-55
COMPREHENSIVE REVIEWS	13		
		NEW YORK CITY	
RESOURCES		GETTING AROUND TOWN	57
AVERY LIBRARY	16	BIKES + CABS	58
IT SUPPORT	17	RECREATION	59
AV OFFICE	18	MUSEUMS + GALLERIES	60
OUTPUT SHOP	19	OTHER VENUES	61
MAKING STUDIO	20	TRANSIT MAPS	62-63
VISUAL RESOURCES LIBRARY	21		
CAREER SERVICES	22		
PRIZES, AWARDS, FELLOWSHIPS	24-25		
SCHOOL LIFE			
EVENTS + LECTURES	26		
SECURITY, ROOMS, FINANCE	27		
STUDIO	28		
LOTTERY	28		
PROGRAM COUNCIL	29		
STUDENT ORGANIZATIONS	29		
SUPPLIES	32-33		
FACILITIES	34-43		



Contributors: Susan Brewer, Min Chen, Matthew Davis, Kenneth Amoah, Chad Karty, Britt Johnson, Claire Lachow, Laura Marie Peterson, Alejandro Stein, Evan Allen, Chris Kroner, Michelle Gerard, John Ramahlo, Mark Taylor, Ben Prosky, Anna-Lisa Finger, David Hinkle, Janet Foster, Danielle Smoller, Joe Vidich, Josh Draper, Jeannie Kim, Fatou Dieye, Lucca Brizzio, William Brian Smith, and Dahlia Roberts

Special Thanks: The Dean's Office, Introduction to Architecture Program

Published by:
Graduate School of Architecture, Planning and Preservation of
Columbia University,
New York, NY 10027.

Academic Calendar

For more information or changes see:

<http://www.arch.columbia.edu/academic-calendar>

FALL SEMESTER 2021

Registration	Tuesday, August 31 - Thursday, September 2
UP Orientation	Wednesday, September 1 Thursday, September 2
HP Orientation	Thursday, September 2
M.Arch Orientation	Friday, September 3
NY/P Orientation	Friday, September 3
Tech + Visual Studies + History Presentations	Friday, September 3
First Day of Classes	Thursday, September 9
Arch. Faculty Meeting	Thursday, September 9 (1:00pm)
All-School Orientation	Thursday, September 9 (2:00pm)
Arch. Studio Presentations + Lottery	Thursday, September 9 (3:00pm)
Mini Sessions (Architecture)	Session A: 9/10 - 10/15 Session B: 10/18 - 12/3
Change of Program	Tuesday, September 7 – Friday, September 21
Last Day to Add/Drop Full Semester + Session A Courses Last Day to Drop with refund	Tuesday, September 21
Last Day for Session A & B registration changes	Session A: 9/21 Session B: 10/22
Arch. Midterm Reviews	Monday, October 18 – Friday, October 29
Election Day Holidays	Monday + Tuesday, November 1-2
Last Day to Drop a Full Semester Class	Thursday, November 18
Last Day of Architecture Classes	Friday, December 3
Thanksgiving Break	Wednesday, November 24 – Friday, November 26
Final Review Week	Monday, December 6 – Wednesday, December 15
Last Day of HP, UP, RED classes	Monday, December 13
Last Day Work Due	Monday, December 20
Grades Due	Wednesday, December 22

Academic Calendar

For more information or changes see:
<http://www.arch.columbia.edu/academic-calendar>

SPRING SEMESTER 2022

Registration	Tuesday, January 11 – Friday, January 14
University Holiday	Monday, January 17
First Day of Classes	Tuesday, January 18
Arch. Studio Presentations + Lottery	Wednesday, January 19 (2:00pm)
Arch. Faculty Meeting	Wednesday, January 19
M.Arch Student Meeting (M.Arch 1st-3rd yrs)	Tuesday, January 25
Mini Sessions (Architecture)	Session A: 1/18 – 2/25 Session B: 2/28 – 4/20
Change of Program	Tuesday, January 18 – Friday, January 28
Last Day for Session A & B registration changes	Session A: January 28 Session B: March 4
Last Day to Add/Drop Full Semester + Session A Courses Last Day to Drop with refund	Friday, January 28
Arch. Midterm Reviews	Monday, February 21 – Friday, March 4
Spring Break	Monday, March 14 - Friday, March 18
Last Day to Drop a Full Semester Class	Thursday, March 24
Last Day of Architecture Classes	Wednesday, April 20
Final Review Week	Thursday, April 21 – Friday, April 29
Last Day of HP, UP + RED Classes	Monday, May 2
Last Day Work Due	Friday, May 6
Comprehensive Reviews (M.Arch 2nd yrs)	Monday, May 9 – Tuesday, May 10
Grades Due	Wednesday, May 11
Arch. Portfolios Due (graduating students)	Sunday, May 8 (2:00pm)
Full-time Faculty Meeting	Wednesday, May 11 (11:30am)
Arch. Awards Meeting	Wednesday, May 11 (1:00pm)
GSAPP Graduation + Opening of End of Year Show	Saturday, May 14
University Graduation Day	Wednesday, May 18

School Programs

For more information:
<https://www.arch.columbia.edu/program-areas/2-architecture>

Master of Architecture

Duration: 3 Years

The Master of Architecture is a professional degree, which weaves together the highest level of disciplinary expertise with the critical and technical skills necessary to recast the boundaries of the discipline, building on a long legacy of groundbreaking innovation in the fields of architecture and design.

HISTORY/THEORY DISTRIBUTION

M.Arch students must take two requisite history courses in the first year. The M.Arch history/theory curriculum aims to introduce students to a range of subjects broadly distributed in both space (geography) and time (chronology), while offering the opportunity to study at least one area in depth. Overall, the curriculum asks students to think and work across categorical East-West and North-South distinctions and the asymmetries these often reproduce. Similarly, while the year 1800 roughly marks

the beginning of worldwide industrialization, the curriculum asks students to consider both continuity and change across this threshold.

BUILDING SCIENCE AND TECHNOLOGY ELECTIVES

If you have taken classes similar to Architectural Technologies I and II, you can waive out of one class, or may receive advanced standing for one or both. If you waive out of them though, you must take an elective to replace the waived course. Please note that a course waiver is not the same thing as advanced standing and both are granted for entirely different reasons.

* All waivers must be processed + approved by the respective Sequence Director at the beginning of your first year.

PROGRAM REQUIREMENTS FOR THE MASTER OF ARCHITECTURE PROGRAM

Course Sequence	Semester 1 Fall	Semester 2 Spring	Semester 3 Fall	Semester 4 Spring	Semester 5 Fall	Semester 6 Spring
Design Studio 6x9pts = 54pts	Core Studio I	Core Studio II	Core Studio III	Advanced Studio IV	Advanced Studio V	Advanced Studio VI
Architectural Technologies 6x3pts = 18pts	Architectural Technology I	Architectural Technology II	Architectural Technology III + Architectural Technology IV	Architectural Technology V	Architectural Technology VI Distribution	
History + Theory 6x3pts = 18pts	Questions in Architectural History I	Questions in Architectural History II	Distribution 1	Distribution 2	Distribution 3	Distribution 4
Visual Studies 2x3pts = 6pts	Architectural Drawing & Rep I	Architectural Drawing & Rep II				
Methods + Practice 2x3pts = 6pts				Visual Studies Elective	Professional Practice	
Electives 2x3pts = 6pts						2 Electives
Total 108pts	18pts	18pts	18pts	18pts	18pts	18pts

School Programs

For more information:
<https://www.arch.columbia.edu/program-areas/2-architecture>

Master of Science in Advanced Architectural Design

Duration: 1 Year

The Master of Science degree in Advanced Architectural Design is a three-term program consisting of summer, fall, and spring terms. The objective of the program is to provide outstanding young professionals who hold a Bachelor of Architecture or Master of Architecture an opportunity to engage with and conceptualize design as a critical practice that shapes the world's technological, relational and environmental evolutions.

The program is viewed as a framework in which both academic and professional concerns are explored. Overall, the program emphasizes an experimental approach to research and architectural design rigorously grounded in contemporary challenges.

In the Advanced Design Studios, 18 studios work on the themes and methodologies defined by their individual critics, exploring the way new instruments, techniques and formats allow design to gain a relevant influence on a multiplicity of existing realities.

The Advanced Design Studios work as laboratories of discussion and practice of new ways of mobilizing architectural ingredients, concepts, programs, tools and methods to connect design with thought and action. Themes and programs both carry an educational objective and present an opportunity for critics and students to jointly develop the capacity and the authority to intervene specific layers of the everyday.

PROGRAM REQUIREMENTS FOR THE ADVANCED ARCHITECTURAL DESIGN PROGRAM

Course Sequence	Semester 1 Fall	Semester 2 Spring	Semester 3 Fall
Design Studio 3x9pts = 27pts	Advanced Architectural Studio	Advanced Studio V	Advanced Studio VI
History + Theory 3x3pts = 18pts	Transscalarities	History/Theory Elective	GSAPP Elective
Other 3x3pts = 9pts	Arguments	GSAPP Visual Technology Elective	GSAPP Visual Technology Elective
Total 45-48pts	15pts	15pts	15pts

School Programs

For more information:
<https://www.arch.columbia.edu/program-areas/2-architecture>

Master of Science in Historic Preservation

Duration: 2 Years

The Historic Preservation program prepares leaders to address the great challenges of protecting the world’s architectural, cultural, and historical heritage in the face of profound change. The multi-disciplinary program has set the standard in the dynamic field of historic preservation and heritage conservation since James Marston Fitch founded it in 1964 as the first such program in the United States.

The program’s renowned faculty uses the architectural and historic riches of New York City as its laboratory, while encouraging study throughout the United States and the world. The Columbia University curriculum stresses the development of analytical thinking and effective communication, coupled with a strong base of knowledge in history, theory, conservation science, planning and policy, and design. Students

graduate with the necessary skills and knowledge to advance this rapidly evolving field and thus join the vibrant network of alumni who are already redefining the boundaries and practice of heritage conservation around the world.

During their second year, students can take one of three advanced studios to specialize in preservation design (joint studio with M. Arch), preservation planning (joint studio with UP), or preservation technology. Advanced studios travel domestically and internationally and offer opportunities for research and hands-on experience. To further their practical training, students are encouraged to complete an internship between their first and second years in the program.

PROGRAM REQUIREMENTS FOR THE MS IN HISTORIC PRESERVATION PROGRAM

Course Sequence	Semester 1 Fall	Semester 2 Spring	Semester 3 Fall	Semester 4 Spring
Studio Thesis	Historic Preservation Studio I 6pts	Historic Preservation Studio II 6pts	Historic Preservation Advanced Studio 6-9pts	Historic Preservation Thesis II 4pts
History, Theory, Technology, Planning + Policy	Traditional American Architecture 3pts	Modern American Architecture 3pts	Historic Preservation Thesis Colloquium 3pts	
	Traditional Building Technology 3pts	Modern Building Technology 3pts		
	Theory + Practice of Historic Preservation 3pts			
	Preservation Planning + Policy 3pts			
Electives		Electives 6+pts	Electives 9+pts	Electives 12+pts
Total	60+pts 18pts	15-19pts	12-19pts	12-19pts

School Programs

For more information:
<https://www.arch.columbia.edu/program-areas/2-architecture>

Master of Science in Critical, Curatorial + Conceptual Practices

Duration: 2 Years

The Masters of Science in Critical, Curatorial, and Conceptual Practices in Architecture is designed to offer advanced training in the fields of architectural criticism, publishing, curating, exhibiting, writing, and research through a two-year, full-time course of intensive academic study and independent research.

The program recognizes that architectural production is multi-faceted and diverse and that careers in architecture often extend beyond traditional modes of professional practice and academic scholarship, while at the same time reflecting and building upon themes of post-industrial development and indeed, of post-urban sensibility relative to traditional Euro-American settlement norms.

Applicants might be seeking further academic training or specialization after a professional degree or years of teaching, or even at mid-career. They might also have worked in a related field and be seeking an academic forum to develop additional specializations in architecture. The program also provides the highest level of preparatory training for application to Ph.D. programs in architectural history and theory.

The CCCP program is structured to reflect this heterogeneity and the multiple sites and formats of exchange through which the field of architecture operates while at the same time sponsoring the ongoing critical development and interaction of such a matrix of practices and institutions.

PROGRAM REQUIREMENTS FOR THE CCCP PROGRAM

Course Sequence	Semester 1 Fall	Semester 2 Spring	Semester 3 Fall	Semester 4 Spring
Colloquium I Thesis 24pts	Colloquium I: Operating Platforms 3pts	Colloquium II: Documents & Discourse 3pts	Thesis I 9pts	Thesis II 9pts
Electives 24pts	Electives 9pts	Electives 9pts	Electives 3pts	Electives 3pts
Total 48pts	12pts	12pts	12pts	12pts

School Programs

For more information:
<https://www.arch.columbia.edu/program-areas/2-architecture>

Master of Science in Urban Planning

Duration: 2 Years

The Master of Science in Urban Planning is a two-year accredited professional degree. Our program takes a comparative, global perspective to urban planning, centering social justice and critical practice. It connects the study of the urban built environment with grounded analysis of socioeconomic and political conditions to inform planning practice and praxis toward social, racial, and climate justice. We prepare students to confront and break down structures and practices of oppression rooted in class inequality, racism, and sexism. By studying the impact of global processes (such as immigration, climate change, and public health) on cities, neighborhoods, and communities—across the Global North and Global South—the program aims to foster new, creative planning and policy approaches that will

improve processes and outcomes in cities around the world.

The Master of Science in Urban Planning program offers four concentrations: Built Environment, Community and Economic Development, International Planning and Development, and Urban Analytics. At the core of the program are a team-based studio course, which takes place in the first year, and a thesis or professional capstone, which is carried out throughout the second year.

Recently, the program has significantly updated the contents of its electives and core curriculum courses to introduce more knowledge related to the global dimensions of planning, more systematic understanding of racism and spatial inequality, and more critical assessment on the use of analytical tools.

PROGRAM REQUIREMENTS FOR THE
MASTER OF SCIENCE IN URBAN PLANNING

Course Sequence	Semester 1 Fall	Semester 2 Spring	Semester 3 Fall	Semester 4 Spring
Thesis Studio 12pts		Planning Studio 6pts	Thesis I (or) Professional Capstone I 3pts	Thesis II (or) Professional Capstone II 3pts
Mapping History Law Economics 12pts	Geographic Information Systems 3pts	Planning Law 3pts		
	History and Theory of Planning 3pts	Economics for Planners 3pts		
Electives Concentration 30+pts	Electives Concentration Courses 6+pts	Electives Concentration Courses 3+pts	Electives Concentration Courses 12+pts	Electives Concentration Courses 9pts
Total 60+pts	15-19pts	15-19pts	15-19pts	15-19pts

School Programs

For more information:
<https://www.arch.columbia.edu/program-areas/2-architecture>

Master of Science in Architecture + Urban Design

Duration: 1 Year

The Master of Science in Architecture and Urban Design is oriented toward architects, landscape architects and engineering graduates who have already received a professional degree and who wish to concentrate further on the study of design considerations related to urban form. The core of the Urban Design curriculum is the three-semester sequence of related studios and seminars.

The summer and fall studios are foundational, addressing constructive aspects of the Urban Design process.

The spring studio is a culmination and synthesis of the previous two, drawing on re-interpretations of previous learning while further exploring the question of operational mechanisms for urban transformation at both the formal and programmatic levels.

This final studio moves from the New York region to other global urban contexts. All studios assert that the grounding conditions of an Urban Design project—site and program—are complex concepts, which must be actively and critically constructed rather than simply accepted as “givens” beyond the designers’ control. The summer semester seminar provides an overview of the recent literature on the question of urbanism. The fall semester seminars investigate the evolution of urban fabric with comparative study of New York and other world cities. The spring semester seminars explore recent theoretical debate, focused on the problematic of public space in the 21st century city.

PROGRAM REQUIREMENTS FOR THE
MASTER OF SCIENCE IN ARCHITECTURE + URBAN DESIGN

Course Sequence	Semester 1 Fall	Semester 2 Spring	Semester 3 Fall
Design Studio 3x9pts = 27pts	Urban Design Studio I	Urban Design Studio II	Urban Design Studio III
Urban Design Seminars 4x3pts = 12 pts	Urban Design Seminar IA + IB 6pts	Urban Design Seminar IIA or IIB or IIC 3pts	Urban Design Seminar IIIA or IIIB or IIIC 3pts
Digital Techniques + Electives 3x3pts = 9pts	Digital Techniques for Urban Design	Optional Elective	Optional Elective
Total 45-48pts	18pts	12-15pts	12-15pts

School Programs

For more information:
<https://www.arch.columbia.edu/program-areas/2-architecture>

Master of Science in Real Estate Development

Duration: 1 Year

The Real Estate Development program's expanded three-semester curriculum combines the fundamental skills of professional real estate with a holistic approach to urban development as a creative act.

Graduates receive a Master of Science of Real Estate Development (MS.RED) in an intensive calendar year spanning from May to May.

Cross-disciplinary electives draw on the program's access to the extraordinary

offerings of GSAPP and Columbia at large, while required coursework immerses students in the three core tenets of urban real estate development: the financial, the physical, and the legal, arming students with the full range of professional and intellectual skills needed to tackle the complex demands of global urban real estate development.

For more information on the program, please email jas215@columbia.edu or call (212) 854-3524

PROGRAM REQUIREMENTS FOR THE RED PROGRAM

Summer	
PLAN 4310 Real Estate Finance	3 credits
PLAN 4310 Real Estate Finance tutorial <i>(waivable with test)</i>	1.5 credits
PLAN 6357 Construction Management and Technology	3 credits
PLAN 6779 The Architecture of Development	1.5 credits
PLAN 6360 Development Analysis: Urban Planning	1.5 credits
PLAN 6352 Real Estate Market Analysis	1.5 credits
PLAN 6368 Predevelopment Analysis	1.5 credits
<i>13.5 credits requirements, 1.5 - 4.5 credits electives</i>	
Fall	
PLAN 4312 Real Estate Finance II	3 credits
PLAN 4326 Real Estate Finance II tutorial <i>(waivable with test)</i>	0 credits
PLAN 6325 Underwriting	1.5 credits
PLAN 6603 Lease Analysis and Financial Metrics	1.5 credits
PLAN 6368 Predevelopment and Development	3 credits
PLAN 6595 Value of Design	1.5 credits
<i>10.5 credits requirements, 4.5 - 7.5 credits electives</i>	
Spring	
PLAN 4314 Real Estate Finance III	3 credits
PLAN 6333 Real Estate Law	1.5 credits
PLAN 6335 Capstone: Development Case Studies	3 credits
PLAN 6295 Value of Design	1.5 credits
<i>9 credits requirements, 6 - 9 credits electives</i>	

School Programs

For more information:

<https://www.arch.columbia.edu/program-areas/2-architecture>

Related Degrees and Programs

(These are not covered in this publication- see GSAPP website for more details)

PhD in Architecture
PhD in Urban Planning
PhD in Historic Preservation
The Shape of Two Cities: New York/Paris:
Certificate Program
Intro to Architecture

Dual Degrees

<https://www.arch.columbia.edu/dual-degree-requirements>

For a comprehensive list of dual degree programs and their requirement, please refer to the GSAPP website.

Required Advising and Comprehensive Reviews

Advising at Columbia GSAPP is meant to help guide students in their journey within GSAPP and beyond. Advising is by program.

To the right is a table of the minimum-required advising sessions for M.Arch. Students may sign-up for additional sessions with the Office of Academic and Student Affairs throughout their time at GSAPP.

Heads up! You will have one comprehensive design review outside of studio while you are here at the GSAPP. It will be held at the end of your second year. You will be assigned times to meet with a small panel of design instructors who will look at your portfolio of GSAPP work. On that note, you should always archive your work for your portfolio—it will make your final portfolio that much easier.

M.ARCH COMPREHENSIVE REVIEW ADVISING SCHEDULE

1ST YEAR - END OF 1ST SEMESTER

Individual Curriculum Advising w/Dean of Academic and Student Affairs
+ Faculty Advisors

Following the completion of Core Studio I, all students are required to schedule curriculum advising with the Dean of Academic and Student Affairs to coordinate their academic schedule for the three year M.Arch Program. Students who require more focused studio/history theory or building technology advising will be directed to the appropriate faculty member.

1ST YEAR - END OF 2ND SEMESTER

All-M.Arch Meeting:
Portfolio Workshop + Student to Student Advising

Following the completion of Core Studio II, a portfolio workshop will be held and students will be informed of the requirements for Comprehensive Review and Final Portfolio Submission, as well as have the ability to view and discuss Portfolios, Comprehensive Reviews, and Curriculum Requirements with M. Arch students more senior in the program.

2ND YEAR - END OF 3RD SEMESTER

Studio Faculty/Discussion

Following the completion of the Core III Studio Final Reviews, the faculty will hold an informal discussion with the second year students reflecting on what the students have studied in the Core and what is expected in the Advanced Studios.

2ND YEAR - END OF 4TH SEMESTER

Individual Comprehensive Studio Review w/Faculty Committee

Following the completion of second year students will be expected to produce a complete portfolio of studio work, and meet with an assigned group of faculty members for a Comprehensive Review of their progress in Core and Advanced IV. At the Comprehensive Studio Review faculty will have an evaluation form/checklist, to ensure the faculty and student have a broad structure around which they thoroughly and consistently discuss the work.

This discussion will attempt to convey briefly to each student the general feeling of the faculty about his or her design work and suggestions may be made on how to prepare for the following design studio.

3RD YEAR - SEP 2021

Individual Transcript Review w/ Dean of Students and Academic Affairs
+ Faculty Advisors

Prior to the end of add/drop for the fall semester, each student should meet with the Dean of Student and Academic Affairs for a pre-graduation transcript review to ensure that all students are prepared to fulfill all graduation requirements. Students who require more focused studio/history theory or building technology advising will be directed to the appropriate faculty member.

3RD YEAR - MAY 2022

Final Portfolio Submission to Faculty Committee

At the completion of the M. Arch studio sequence, and prior to graduation, students are required to submit a portfolio of representative work from each semester and a final overview of their studies at the GSAPP. These portfolios are used in deciding the recipients of the various graduation prizes.

Words of Advice

Collected over time from past and continuing students.

1. Allow events to change you. You have to be willing to grow. Growth is different from something that just happens to you. You produce it. You live it.

2. Forget about the good. Good is what we all agree on. Growth is not necessarily good. Growth is exploration that may or may not yield to our research. As long as you stick to good you'll never have real growth.

3. Process is more important than outcome. When the outcome drives the process we will only ever go to where we've already been. If process drives outcome we may not know where we're going, but we will know we want to be there.

4. Love your experiments as you would an ugly child. Joy is the engine of growth. Exploit the liberty in casting your work as beautiful experiments, iterations, attempts, trials, and errors. Take the long view and allow yourself the fun of failure every day.

5. Go deep. The deeper you go the more likely you will discover something of value.

6. Capture accidents. The wrong answer is the right answer in search of a different question. Collect wrong answers as part of the process. Ask different questions.

7. Study. As studio is a place of study. Use the necessity of production as an excuse to study. Everyone will benefit.

8. Drift. Allow yourself to wander aimlessly. Explore adjacencies. Lack judgment. Postpone criticism.

9. Begin anywhere. John Cage tells us that not knowing where to begin is a common form of paralysis. His advice: begin anywhere.

10. Everyone is a leader. Growth happens. Whenever it does, allow it to emerge. Let anyone lead.

11. Harvest ideas. Edit applications. Ideas need a dynamic, fluid, generous environment to sustain life. Applications, on the other hand, benefit from critical rigor. Produce a high ratio of ideas to applications.

12. Keep Moving. The market and its operations have a tendency to reinforce success. Resist it. Allow failure and migration to be a part of your practice.

13. Slow down. Desynchronize from standard time frames and surprising opportunities may present themselves.

14. Don't be cool. Cool is conservative fear dressed in black. Free yourself from limits of this sort.

15. Ask stupid questions. Growth is fueled by desire and innocence. Assess the answer, not the question. Imagine learning throughout your life at the rate of an infant.

16. Collaborate. The space between people working together is filled with conflict, friction, strife, exhilaration, delight, and vast creative potential.

17. _____.
Intentionally left blank. Allow space for the ideas you haven't had yet, and for the ideas of others.

Resources

For more information:

<https://www.arch.columbia.edu/student-resources>

If you haven't noticed already, the school is jam-packed with people, things, and ideas, and spills over into a few facilities. The following pages are meant to help you become acquainted with the basics and functionality of those spaces.

Brownies Cafe

1st Floor Basement, Avery M-F, 8AM – 5PM

*subject to change

Located in the basement of Avery Hall, Brownie's is literally and figuratively one of the foundations of the GSAPP. The café provides nourishment and caffeine to hundreds of starving and sleepy students throughout the academic school year. The space acts as an exhibition gallery and is the lounge of the school—a venue for discussion and meetings between faculty and students.

Director of Operations

Mark Taylor, Director of Operations
mt156@columbia.edu

917 526-0703

The Director of Operations is responsible for all spaces used by the GSAPP. All in-house renovation projects in the GSAPP are coordinated through this office.

Additionally, student renovation crews are hired between semesters, which is scheduled and overseen by Mark Taylor. It is this office that ensures the building is properly maintained. Any maintenance issues (non-functioning lights, water leaks, broken hardware, AC issues, etc.) should be directed to Mark Taylor, who serves as the liaison with CU Facilities Management and Office of Public Safety.

This office also responsible for ensuring safety and best practices for all construction projects performed by students. This includes all installations, exhibitions, models and mock ups. Students are strongly encouraged to adopt a policy of "If you don't know, ask." Mark can be contacted at the email and phone listed above.



TIPS:
NEVER CUT ON THE FLOOR OR YOUR DESK SURFACE! USE THE LARGE CUTTING TABLES ON AVERY 500 OR USE THE MAKING STUDIO.
NEVER SPRAY PAINT ON OR NEAR AVERY HALL. USE SPRAY BOOTH ON AVERY 600.
IF YOU DON'T KNOW ASK!!!

Resources

For more information:

<https://www.arch.columbia.edu/facilities/1-avery-library>

Avery Architectural + Fine Arts Library

3rd Floor, Ground Level 300 Avery	Hours: M – Th	9AM – 9PM
	F	9AM – 5PM
	S	11AM – 6PM
	Su	CLOSED

*These hours are subject to change

Avery Library holds the world's most extensive collection of architectural books, manuscripts, treatises, periodicals and drawings. There is amazing stuff in this library, and you are highly encouraged to take advantage of the fact that you have access to Wallace K. Harrison's copy of *Oeuvre complète* or an edition of Alberti's *De re aedificatoria* from 1485 while you are here.

The collection is **non-circulating**, with the exception of the Ware Collection. At first, not being able to check out books might seem to be a nuisance, but you will be grateful when the one book you need for your paper is in the library the day before the work is due.

Free scanning is available in the library in Room 220B. Photocopying may seem old school but is still helpful, so be sure to put some money on your Flex account on your Columbia ID card.

RESEARCH

Be sure to get familiar with the Avery Index to Architectural Periodicals. It can definitely help you beef up your research for that seminar. We noticed that there are those who prefer not to leave their desks while researching papers. If this includes you, try ProQuest (search.proquest.com), Lexis-Nexis (www.lexisnexis.com/hottopics/lnacademic), JSTOR (www.jstor.org) for full-text articles that will get you beyond Google.

Map Room | Lehman Library

Super Large Format Scanning

Lehman Library, across the street in the SIPA Building has a 54" wide scanner in the Map Room. This department is also a great resource for help with GIS. Scans are unlimited (3 Documents per 48 Hours) and free for ALL students. Library staff will do the scanning for you, and the map room is open whenever the library is open. You can find the hours on their website.

RESERVES

The Reserve Desk holds frequently requested texts on permanent reserve. This includes aerial plans and Sanborn maps that will be helpful for studio work. Professors and teaching assistants frequently place all related texts on a reserve shelf.

RARE BOOKS

Let me reiterate. There are many amazing things to see in the library, some of these (designated "Classics" in CLIO) are part of the rare books collection. You can see these by filling out a request form before the paging times (M-F at 10AM, 11:30AM, 2PM, 3:30 PM) in Room 234.

To see some of the 400,000 + drawings and archival materials, you will need to make an appointment.

QUICK LINKS

LIBRARY.COLUMBIA.EDU
LIBRARY.COLUMBIA.EDU/LOCATIONS/AVERY
CLIO.COLUMBIA.EDU

Resources

For more information:

<https://www.arch.columbia.edu/it-support>

IT Support + Help Desk

GSAPP IT HELP DESK

gsappit@arch.columbia.edu

Location: 600 Avery

The school incorporates state-of-the-art digital technologies in the design curriculum. Since the introduction of the first “paperless” design studios on the seventh floor of Avery in the mid-nineties, there has been substantial annual investment and dramatic improvements in the facilities and electronic infrastructure for research, teaching, presentation, computer-aided design, and general computing at the GSAPP.

A centralized technical and administrative structure has been set up to provide a higher level of technical support, standardization of computer hardware, software, and more generous resources for all GSAPP students. The result is a very wide selection of professional software packages ranging from AutoCAD and GIS to multimedia and video editing, all available at all times from any one of well over 500 workstations in the School.

ACCOUNT ACTIVATION

In order to use the GSAPP computers, you need your Columbia ‘uni’ credentials. Make sure that your uni account is set-up before using GSAPP computers.

IT SUPPORT

All computer problems must be reported via the GSAPP IT Helpdesk.

Fill out an online help ticket, including as many details as possible. You will get a confirmation email from a staff member to determine the next step, and you can check the progress remotely through their system.

LIONMAIL GOOGLE DRIVE

All Columbia students have access to cloud storage for the purpose of backing up and/or transferring their coursework. More information about Lionmail Drive can be found here:

<http://cuit.columbia.edu/lionmail-drive>

Please keep in mind that, due to the size of studio application files and various related documents, if you decide to sync Lionmail Drive to your desktop via Google Drive, it is imperative that you set up your Google Drive folder on the D: drive of your workstation (not on the C: drive).

Failure to do so may/will result in: decreased performance from workstation, and the inability to save additional documents/files.

When setting up your Google account, click the “Sync Options” button to create and sync your Google Drive Folder to the D: drive. “Sync Options” will appear when you are clicking “Next” through the Google Drive setup and is easy to miss.

WIFI SERVICES

GSAPP’s wireless services are managed by CUIT, but GSAPPIT staff. To check for system alerts and updates, see here: www.columbia.edu/cuit

**SAVE YOUR WORK!
DON'T SUFFER FROM
LOST DATA. SAVE OFTEN,
AND BACK UP YOUR
WORK USING GOOGLE
DRIVE.**

Resources

For more information:
arch.columbia.edu/audio-video-office

Audio Visual (AV) Office

321M Fayerweather M–F 9AM – 5PM
*Schedule is subject to change

GSAPP AV Team
av@arch.columbia.edu
https://columbiagsappav.ezofficeinventory.com/users/sign_in

The AV Office facilitates many audio-visual needs at GSAPP. It supports and maintains classroom technology such as projectors, televisions and computers as well as portable classroom presentation equipment. It also maintains an inventory of media equipment for student use, including digital video cameras, digital still cameras, audio recorders and GPS devices.

RESERVING EQUIPMENT

During your time here you will likely need to take advantage of the AV facilities, whether it is for a laptop and projector for a studio review, a video camera for making a file, or a still camera for taking pictures of a model. Log into EZOFFICE to activate your account and reserve equipment.

Guidelines

- A reservation confirmation is required to check out any equipment
- Sequential reservations are not permitted. This ensures equipment availability for all students. You must return your equipment according to your approved reservation.
- Requests must be submitted 1 business day before your reservation and submitted weekdays
- Requests made after 5pm will not be processed until the following business day
- Requests are not processed on weekends
- Your reservation is confirmed when you receive an email confirmation
- Your Columbia University email is disabled if equipment is not returned on time

**EZOFFICE ONLINE
RESERVATIONS
24 HOURS IN ADVANCE!**

FINE PRINT
MAKE SURE TO CLICK "Login Using Columbia UNI ID" DO NOT type your Columbia email and password into the normal email login.

SCHEDULE

**SAME DAY
PICKUP/RETURN**
(Equipment is strictly for on campus, academic use ONLY)

48 HOUR LOAN *

- Digital Video Cameras
- Digital Still Cameras
- Digital Audio Recorders
- Tripods
- GPS Devices

* Extensions apply for weekend use

ITEMS AVAILABLE

Urban Planning Computer Lab

201 Fayerweather

This computer lab was recently renovated and has a common area with 60" TVs for students to practice presentations. The lab contains 24 student computers, a podium, and two 60" LED TVs for presentation.

This lab is strictly reserved for Urban Planning students, and any rendering will be stopped and the student removed.

Other Computer Labs?

Help: 202 Philosophy Hall
askcuit@columbia.edu 212.854.1919

Nearly all students aside from Urban Planning and Real Estate now have dedicated computers on their desks. As a student of Columbia, you also have access to a free Columbia computer account for email and internet purposes managed by CUIT. Word-processing and other softwares are available on the computers in Butler Library and in the lobby of the 11th floor of Butler Hall.

Resources

For more information:

<https://www.arch.columbia.edu/output-shop>

Output Shop

116 Avery (next to Brownie's)
*Schedule is subject to change

M-F: 9AM – 5AM

Carlito (Tito) Bayne, Manager tito@arch.columbia.edu
General concerns outputshop@gmail.com

The Output Shop is a full service large-scale print facility serving GSAPP students. There are four different paper types to print to each with a different price (per linear foot) at 36" wide. OPS rounds prints up to the linear foot, so make the most of your plots and print intelligently.

OUTPUT SHOP QUIZ

All students are required to pass the output shop quiz before beginning to use the services of Output Shop. Once you have passed, please print your certificate and bring it down to the Output Shop to get an OPS Certified sticker for your ID. You will not be able to use the OPS until you have this sticker. This ensures students from other schools are not using GSAPP facilities.

Please note that during midterms and finals there are print deadlines in place.

PAYING FOR YOUR JOB

Students must pay before they receive their jobs. IDs cannot be held as collateral. No money, no job. No exceptions. The OPS can only accept the flex account as a form of payment. They do not take cash, credit/debit cards, or checks. Money can be placed on your flex account card or student ID card using the machine on the 6th floor of Avery in the glass room next to the men's restroom. Money can also be added to an account online using SSOL. The online SSOL service accepts credit cards but takes 4-6 hours for the money to appear on your card. The 6th floor machine puts the money in your account instantly but accepts cash only.

'SELF' PLOTTING

Instead of students sending something directly to the plotters, GSAPP uses a file drop system installed on all studio computers. This allows OPS to fix some common errors such as incorrect sizes or a mis-rotated prints. To do this properly, OPS uses a file naming structure to ensure that the right plot at the right size on the right paper is printed.

Although it is subject to updates, it generally follows this scheme:

UNI_final_PAPER_SIZE_CRITIC.pdf

(your uni, the file name, the paper type, the plot size, the name of your critic or the type of class) PDFs are best, jpg are okay, but the plotters can't print png, so always check!

OPS QUIZ

<https://www.preprofs.com/quiz-school/ugc/story.php?title=NTQ0MTcx>

**YOU CAN PRINT
IN THE STUDIO!**

**1200X B&W
125X COLOR
PER SEMESTER**

FINE PRINT
8.5x11 SB=1 PRINT | 11x17=2 PRINTS
More prints can be purchased at the
Output Shop using your
Flex Account

Resources

For more information:

<https://www.arch.columbia.edu/facilities/2-making-at-gsapp>

Making Studio

100 Schermerhorn

Joshua Jordan, Director
jcj2134@columbia.edu

The newly remodeled fabrication shops at GSAPP, known collectively as the Making Studio, combine a range of workshop project spaces for fabrication, 3D printing, robotics and multi-modal making, prototyping, digital cutting and tooling alongside a space for large-scale fabrication and experimentation.

SAFETY ORIENTATION

Please note that new training is required for any student, new or continuing, who is planning to use the shop during the semester.

Orientation is provided in the form of a short online video available on the GSAPP YouTube Channel. After watching the video, please take the online Rascal Training Quiz and submit a response to the Shop Orientation Contract to confirm your acknowledgement of shop guidelines for the semester.

FABRICATION TOOLS

CNC Equipment

- 3-Axis CNC Routers (4 machines): A smart, computer controlled router that carves out material
- Plasma Cutter: A 4'x4' CNC machine that cuts most metals up to 1/2" thick

Wood-Shop

- Table Saw
- Chop Saws
- Drill Presses
- Lots of hand tools
- Hand Routers
- 12-Ton Press Brake (for bending metal)
- Band Saws
- Scroll Saw
- Planer
- Vacuum former
- Heat Strip (for bending plexi)

MAKERSPACE

Laser Cutting

GSAPP has 5 laser cutting machines in the Required training consists of the University-Level Rascal laser safety training. Upon presentation of the completed online training and certificate, an appointment is provided for students at their next laser appointment slot.

Laser-cutting equipment is by appointment only during the open hours of the Making Studio. The appointment is available on the GSAPP website. All slots must be paid before the completion of booking. Cost of slots are \$5 per half-hour.

Bookings must be done in-person during opening hours of the Makerspace. Transaction must be completed in flexcard as we don't accept any other type of payment.

Some notes:

- Students cannot book less than 30 minutes or more than 2 hours per day, or 8 hours per week.
- Students can ONLY cut approved materials.

3D Printing

If students wish to use the 3D printers, please follow the instructions posted to the making studio website. Because of the variety of machines, each one has it's own procedures, but there is a collective set of best practices.

24-7 Space

A dedicated 24-hour accessible space enable students to explore, stage, tinker, reuse, and adapt for works in progress. Please keep it clean and tag your items accordingly. It isn't a storage space for raw materials.

**SHOP
ORIENTATION
CONTRACT**
<https://forms.gle/QLmGmHEupp9BDP39>

Resources

For more information:

<https://www.arch.columbia.edu/vrc>

Art History Slide Library

Schermerhorn, 9th Floor

You should definitely take a quick side trip to see this newly renovated space, designed by GSAPP faculty for the Art History Department.

Undergrad Architecture Studios

Barnard College

Karen Fairbanks, Chair
Rachel Garcia-Grossman, Department Assistant
Undergraduate Architecture Program

The undergrads occupy studio space at Barnard. The work in this program is often a good source of inspiration, and you should definitely keep an ear out for possible teaching assistantships.

Office of Special Programs

Danielle Smoller, Director
New York/Paris & Introduction to Architecture

These programs provide an introduction to the disciplines of architecture, urban studies, and planning. As is the case with the undergrad architecture studios, keep an ear out for possible teaching assistantships.

Visual Resources Library (VRC)

204 Fayerweather

M-F, 9:00 AM to 1:00 PM

gsappvrc@columbia.edu
<https://www.arch.columbia.edu/vrc>

The Visual Resources Collection (VRC) is a student-run facility providing GSAPP students and faculty access to more than 200,000 images in digital, 35mm slide, and lantern slide formats. The collection also includes VHS and DVD recordings of over twenty years of lectures and events held at GSAPP. All GSAPP students are invited to apply for a student work position.

The digitized image catalog, offering access to nearly 40,000 images, is accessible from any GSAPP computer and covers faculty research interests, images used in history courses, work presented by guest lecturers and a survey of architectural history from antiquity to the present day.

The VRC also offers an archive of lectures and conferences at GSAPP. Current GSAPP students and faculty are permitted to borrow lecture videos for academic purposes. VRC staff is available to digitize small image orders.

Material Connexion

1271 Avenue of Americas, F1 17
New York NY 10020
(212) 842 2050 Hours: M-F, 9AM–6PM
www.materialconnexion.com

This is pretty cool, and completely underutilized by students. GSAPP has a student-wide subscription to Material Connexion, which is the largest global resource of new materials. The Library houses over 3,500 new and innovative materials representing eight categories: polymers, glass, ceramics, carbon-based materials, cement-based materials, metals, natural materials and natural material derivatives; featuring truly cutting-edge materials and applications. Material connexion is currently available on campus computers.

TEACHING ASSISTANTSHIPS APPLICATIONS ARE AVAILABLE ONLINE BEFORE THE START OF EACH SEMESTER.

THERE ARE ALSO CASUAL WORK OPPORTUNITIES THROUGH-OUT THE SCHOOL

Resources

For more information:

<https://www.arch.columbia.edu/career-services>

Career Services

Architecture and Urban Design

Karen Cover: Karen.Cover@columbia.edu

Real Estate Development

Rebecca Andersen Polimeda: raa2186@columbia.edu

Urban Planning

Emily Junker: elj2130@columbia.edu

Historic Preservation

Meredith Brull: mab2374@columbia.edu

M.ARCH, MS.AUD, MS.AAD

Career Services for Arch + UD programs strives to keep students in touch with the professional world beyond GSAPP. Their events include Tuesday Talks with alumni panelists, workshops, networking events, portfolio reviews and career fairs. Job and internship openings for current students and alumni are posted on the GSAPP website.

A 3rd-year M.Arch student and 1-2 student assistants support the CS Officer. Every year, CS will hire a 2nd-year M.Arch student to assist the 3rd-year Coordinator. This student will inherit the 3rd-year Coordinator position the following year. Additional assistantship positions are open to MS.AAD and MS.AUD students.

MS.RED

Career Services for the MS.RED program serves as a point of connection between students and alumni/employers in the real estate industry. It is dedicated to providing meaningful professional development programming and opportunities for networking and mentorship. The annual events include employer information sessions, industry and professional organization panels, workshops on career development strategies, alumni speed networking, the alumni mentor program, and the spring career fair. A class resume book is also produced each year. A full-time job board is utilized year-round for graduating students and alumni.

INTERSHIP ELECTIVE

This elective credit-based internship course (1.5 credits) provides students with the opportunity to apply their expertise and skills in a real world setting. Students work with practitioners and industry experts to explore their interests in more depth and to expand their knowledge of working environments and career paths. Additionally, internships provide students with an inside view of their industry and the chance to develop connections in their professional network. Only students who have completed two semesters of graduate level work are eligible for the internship course.

ENGAGE

Engage is the GSAPP's career and online recruiting system which allows students and alumni 24/7 access to employers, search internships and jobs, and identify alumni contacts. Students can optimize their job search by using Engage search filters to find the right opportunity for them, upload their portfolio and track events.

STUDENT ALUMNI-MENTORSHIP PROGRAM

Now in its 7th year, the Student-Alumni Mentorship programs connect students with alumni based on mutual interests, geographic preferences, and professional backgrounds—in turn reconnecting GSAPP alumni with the school. Usually interested students and mentors are matched at the beginning of the school year. If you are interested contact the Office of Development and Alumni Relations at: alumni@arch.columbia.edu

ENGAGE

https://arch-columbia-cam.symphonicity.com/students/?signin_tab=0

More Words of Advice

Collected over time from past and continuing students.

18. Get some sleep. Strange things happen when you've gone too far, been up too long, worked too hard, and you're separated from the rest of the world.

19. Work the metaphor. Every object has the capacity to stand for something other than what is apparent.

20. Be careful to take risks. Time is genetic. Today is the child of yesterday and the parent of tomorrow. The work you produce today will create your future.

21. Repeat yourself. If you like it, do it again. If you don't like it, do it again.

22. Make your own tools. Hybridize your tools in order to build unique things. Even simple tools that are your own can yield entirely new avenues of exploration. Remember, tools amplify our capacities, so even a small tool can make big difference.

23. Stand on someone's shoulders. You can travel farther carried on the accomplishments of those who came before you. And the view is so much better.

24. Avoid software. The problem with software is that everyone has it.

25. Don't clean your desk. You might find something in the morning that you can't see tonight.

26. Be collaborative not competitive.

27. Read only left-hand pages. Marshal McLuhan did this. By decreasing the amount of information, we leave room for what he called our "noodle".

28. Make new words. Expand the lexicon. The new conditions demand a new way of thinking. The thinking demands new forms of expression. The expression generates new conditions.

29. Think with your mind. Forget technology. Creativity is not device-dependent.

30. Organization = Liberty. Real innovation in design or in any other field, happens in context. That context is usually some form of cooperatively managed enterprise. Frank Gehry, for instance, is only able to realize Bilbao because his studio can deliver it on budget. The myth of a split between "creatives" and "suits" is what Leonard Cohen called a "charming artifact of the past."

31. Don't borrow money. Once again, Frank Gehry's advice. By maintaining financial control, we maintain creative control. It's not exactly rocket science, but it's surprising how hard it is to maintain this discipline, and how many have failed.

32. Listen carefully. Every collaborator who enters our orbit brings with him or her a world more strange and complex than any we could ever hope to imagine. By listening to the details and the subtlety of their needs, desires or ambitions, we fold their world onto our own. Neither party will ever be the same.

33. Take field trips. The bandwidth of the world is greater than that of your TV set, or the Internet, or even a totally immersive, interactive, dynamically rendered, object-oriented, real-time, computer graphic-simulated environment.

34. Make more mistakes.

Prizes, Fellowships and Awards

For more information:

<https://www.arch.columbia.edu/admissions/tuition-aid>

There are many generous prizes, fellowships and awards given by the school. Watch for regular announcements. There are also many external awards available that are described on the GSAPP website. Below we can only highlight a few.

Major GSAPP Awards

WILLIAM KINNE FELLOWS TRAVELING PRIZES

The School is the beneficiary of a considerable bequest from the late William Kinne that has as its purpose the enrichment of students' education through travel. Traditional procedures of disbursement include individual, noncompetitive grants for school sponsored travel for architecture, preservation, and planning students, and a limited number of competitive fellowships for two to three months of travel open to all graduating students in the School.

Basically, a committee decides how to distribute the funds granted by William Kinne each year. You will see this name again, but you are eligible during your last year to apply for a Graduate Kinne Fellowship. The proposal should be serious, detailed, and include a budget. The committee grants fellowships based upon the strength of the proposals but they might also take a look at your academic record to be sure that you can actually accomplish what you say you will do with Mr. Kinne's money.

KINNE TRAVEL GRANTS

Here he is again. Thanks to William Kinne, all M.Arch., AAD, UD, UP, and HP students are eligible for a one-time, individual, noncompetitive grant for school-sponsored travel. For UD, UP, and HP students, this means a group trip. For third-year M.Arch. and AAD students, this means that you will go somewhere during your spring studio. Trips are generally scheduled during (or close to) spring break.

BUELL CENTRE PRIZE

Three prizes of \$3,000 each are awarded to students at Columbia University's Graduate School of Architecture, Planning, and Preservation whose fall semester architectural design (M.Arch & AAD) studio projects most successfully comply with, interpret, and/or critically extend the terms and spirit of the 2015 Paris Agreement. Winning proposals will directly address the social, technical, political, and symbolic implications of the climate accord in an architecturally specific fashion, at multiple scales.

PERCIVAL & NAOMI GOODMAN FELLOWSHIP

Each year, Columbia University's Graduate School of Architecture, Planning and Preservation awards the Percival and Naomi Goodman Fellowship to a student graduating from Columbia University. Recipients are announced at the School's commencement ceremony in May of each year.

The purpose of the Fellowship is to enable the recipient to carry out a project of social significance related to the interests of Percival Goodman. Projects should be strongly humanist and be committed to the possibility that lives can be changed for the better. The amount of the award is \$20,000. The project may be undertaken anywhere in the world. It may last up to one year after graduation and must be concluded with a final report.

INCUBATOR PRIZE

For recent alumni, the Incubator Prize (\$10,000) supports projects that bridge critical discourse with active practice and engagement. The Prize encourages a wide range of experiments while focusing on a specific topic of inquiry each year. The prizes have an application process announced during the summer.

Prizes, Fellowships and Awards

For more information:

<https://www.arch.columbia.edu/admissions/tuition-aid>

External Awards

ALLWORK SCHOLARSHIP

This merit-based scholarship supports architecture students with demonstrated financial need. Students must be nominated by the Dean in order to apply for this award. Recipients receive up to \$7,500 each, with the potential of an Honor(s) grant of up to \$10,000.

AIA/AAF SCHOLARSHIP FOR FIRST PROFESSIONAL DEGREE CANDIDATES

According to the American Architectural Foundation website, "this scholarship is designed to assist students in one of the final two years of a professional degree program. The applications are only available from the departments of architecture at NAAB and RAIC accredited programs. The Dean or a designated scholarship committee selects applicants. The applicants are required to write a personal essay, file a financial aid need analysis, provide a drawing, transcripts and class ranking, and three letters of recommendation. Applications are due in February. Scholarships generally range from \$500 to \$2,500. The awards are announced in April and issued prior to the next academic year. Recipients receive a certificate of merit recognizing their achievement." M.Arch. students in their second or third year interested in applying should contact the Dean's Office early in the spring semester for more information.

KPF TRAVELING FELLOWSHIP

Each year, KPF presents three awards to students in their penultimate year at one of the twenty-seven design schools with whom the firm has chosen to partner. The goal of the award is to allow students broaden their education through a summer of travel and exploration before their final year at school. Recipients are awarded cash prizes to fund summer research on far-reaching topics that push the boundaries of critical thinking and architectural design, with

winners determined by a jury of KPF Principals and industry leaders.

RIBA NORMAN FOSTER TRAVELLING SCHOLARSHIP

The RIBA Norman Foster Travelling Scholarship offers £7,000 to a student of architecture who demonstrates the potential for outstanding achievement and original thinking on issues that relate to the sustainable survival of cities and towns. To be eligible to apply, students must be enrolled in, and have successfully completed at least the first year of a professional qualification in architecture from a school invited by the RIBA.

RENZO PIANO BUILDING WORKSHOP INTERNSHIP

The Fondazione Renzo Piano, a non-profit organization dedicated to advancing architectural practice through educational programs and related activities, runs a six-month student internship program at the RPBW's offices in Paris and Genoa to foster educational experiences that bridge the gap between academic learning and the realities of active creative practice. The internship draws students from selected universities throughout the world. Interns work with a team on a real project and are involved in client/design team meetings. Watch for an announcement of the internship. Work includes computer modeling and drawing, model making and construction site visits. The Fondazione

total of € 8.500 including

**IMPORTANT
DATES:
APRIL 15TH
US TAX DAY, 1040 AND
SCHOLARSHIP FORMS DUE
ONLINE THROUGH GSAPP
WEBSITE (FOR CONTINUING
STUDENTS)
JUNE 30TH
LAST DAY TO TURN IN
FAFSA**

School Life

For more information:

<https://www.arch.columbia.edu/events>

Lectures, Conferences and other Events

Lyla Catellier, Director of Events & Public Programs
lc3173@columbia.edu

Columbia GSAPP offers a diverse range of free and public events for students, alumni and fans: debates, panel discussions, conferences, book launches, exhibitions and lectures by emerging and established practitioners in all of the fields represented in Avery Hall.

All events are announced at the beginning of the fall and spring semesters on the semester long events poster, which is posted around Avery Hall and available on the 4th Floor by request.

Sign up for the weekly events newsletter on GSAPP's website. This newsletter offers a concise digest of upcoming events. An online calendar of all upcoming events is always available at arch.columbia.edu/events. Here, you can also browse and watch footage from past events.

Seating is on a first-come-first-serve basis. If you anticipate a lot of interest from your peers in a particular topic or person, arrive early. Occasionally, a line will form prior to entry time. When high-profile speakers come to Columbia GSAPP, we make an attempt to accommodate as many seat GSAPP students before the general public or students from other schools at the university. Have your Columbia ID ready in these instances, and be prepared to arrive early and spend a bit of time in line—this will typically begin at the ramp leading to the back doors of Wood Auditorium, and wind up the stairs from Brownies Café to Fayerweather Hall. (Due to safety restrictions, the line may not wind through Brownies Café.)

Once all seats in Wood are taken, staff will accommodate for standing room in the back of the space. For safety reasons, aisles and passageways must be kept clear. For events that are anticipated to fill up, staff will arrange for a simulcast in Rooms 114 or 115, or in the café. Events in Wood are recorded and archived on the Columbia GSAPP YouTube channel.

GSAPP's Monday evening Dean's lecture series in Wood are primarily given by practitioners presenting a body of work, whereas the Friday lunchtime lectures are more discursive, bringing theorists and practitioners together. The events organized by the school are just a fraction of the many events occurring at GSAPP at any given time. In addition to lectures series organized by each program (Inquiry: HP, Lecture in Planning Series (LiPS), Urban Design Lecture Series) are lunchtime lectures, evening and weekend events in downtown New York, and self-organized student group events also occur regularly throughout the year.

**MISSING
THE LECTURE?**

STREAM IT LIVE:
www.livestream.com/GSAPP

OR WATCH IT LATER:
[www.youtube.com/
ColumbiaGSAPP](http://www.youtube.com/ColumbiaGSAPP)

School Life

For more information:

<https://www.arch.columbia.edu/student-resources>

Security

Columbia University Security
212 854 SAFE (7233)

Only students and faculty of the GSAPP should have access to the studio. Unfortunately, thefts still occur. Do not leave any valuables unattended and keep accessories such as your laptop, headphones, cameras, locked at all times. Let me reiterate: **KEEP EVERYTHING LOCKED!** Lockers are provided for everyone to have a secure place to store valuables and non-valuables. Columbia security periodically checks the studio and the building. The front door to Avery is open when Avery Library is open. The magnetic stripe on your student ID will permit entry into the building after normal working hours. The studios are also equipped with swipe access (no propping of doors!)

Finances

School (as you no doubt already know) costs a lot of money. However, you will be happy to learn that it costs less than most of the graduate programs at Columbia and, in fact, a wee bit less than being an undergraduate. Many important questions related to financial aid are answered on GSAPP's website.

It is also important to know that financial aid is handled through Student Financial Planning in 210 Kent Hall. For this and other reasons, you will soon become familiar with their question and answer protocol askus.columbia.edu and the ubiquitous Student Services Online sso1.columbia.edu, which has a direct link to Net Partner where you can manage your financial aid.

Need-based scholarships are disbursed by the GSAPP shortly after the ADD/DROP deadline. Since these funds come directly from the GSAPP, they will not appear in NetPartner or on your Financial Aid statements. The GSAPP code for Federal Student Aid is **002707**.

Reserving Rooms

email: rooms@arch.columbia.edu

Your studio instructor or TA might ask you to get a room. For whatever reason, at whatever time, you must reserve the room first. Just like printing and AV, the earlier you plan it, the easier it will be for everyone.

In the body of the email:

Date:

Room:

Time:

2nd Choice:

3rd Choice:

Number of stu

Name of Profe

Name of TA:

Telephone no.:

**ROOM
RESERVATION
CALENDAR**

**TO SEE WHAT ROOMS
MIGHT BE AVAILABLE, OR
TO CHECK ON AN EXISTING
RESERVATION GO TO:
<https://ems.cuit.columbia.edu/EmsWebApp/>**

ATTENTION:

Please be specific about your reservation's start and end times and please leave the room in the same shape that you found it.

Teaching Assistantships

<https://www.arch.columbia.edu/assistantships>

There will be an email sent over the summer announcing the deadline for applications, which are usually due in July.

Compensation consists of a combination of a tuition award and a stipend (and the exact alchemy of this varies, so consult those older and wiser to find out which TA positions are the most profitable). All matriculated students who are registered for a minimum of 12 points are eligible.

School Life

For more information:

<https://www.arch.columbia.edu/student-resources>

M.Arch Studio Life

STUDIOS: NORTH VS. SOUTH? ATTIC?

The fifth, sixth, and seventh floors are all design studio levels. The fifth and sixth floor are symmetrically split between north and south, with the north having more consistent light and those with more consistent winds. The south studios have more light and a generally better view, but they can really heat up in the summer months (or if it rains in November).

The seventh floor, or attic, was where the paperless studio began a few years ago, but it is a smaller studio space with elevator access (yes, there are places in the building that aren't handicapped accessible). It has no exterior windows but it has a great view into the sixth floor studios.

MOVING IN/OUT

Every semester you will have to fully move in and subsequently move out all of your belongings from the school. There is no student storage. While this tends to be a pain, there are benefits to getting your stuff out. It forces you to purge things that you tend not to use and makes a time for you to backup your entire semester's data on the computers. (The hard drives are wiped clean before every new semester.) You might want to bring some luggage with wheels to help you get stuff home, and this would definitely be a time to splurge on a cab.

6 ON 6

Translation: Once upon a time, Friday, at 6 o'clock, on announced location (formerly on the 6th floor, hence the name).

This tradition started with a fixed location on the sixth floor (hence the name), but new rules have made it move around lately.

Keep an eye out for the weekly posters announcing location. Anticipation builds every week because Friday nights are for tension release!

It's definitely one of the best happy hours in town almost every Friday evening after studio, accompanied by the free beer and other light libations. This is a great place to meet people in other years and programs, catch up on your studio (mis) happenings, hear students rant about their latest architectural theories.

While guests are not discouraged, don't let the whole city know about this GSAPP secret.

STUDIO LOTTERY

In your first semester you will be assigned studios. At the beginning of each subsequent semester, studio critics give presentations about their upcoming studios. These presentations help you determine the projects and professors that interest you most. Immediately thereafter, you and all of your classmates will list all of the studios in order of preference.

Since it's a lottery, you might not get your #1 choice (especially in Advanced Studios). In fact, people often land in studios lower on their list and often have better semesters for it.

STUDIO NOISE

While sometimes we might try to drown out the Thursday night Business School party with our own music, be respectful of your fellow working classmates who might not love ABBA. If you are asked to turn the tunes down, please do.

PREFER A WINDOW SEAT?
WATCH FOR WHEN THE STUDIO OPENS TO GET THE SEAT YOU WANT.
THEY ARE FIRST COME FIRST SERVE

School Life

For more information:

<https://www.arch.columbia.edu/student-resources>

Grades

<https://www.arch.columbia.edu/grades>

HP (high pass) = a superior level of work

P (pass) = an acceptable level of work

LP (low pass) = work that meets minimal standards

F (fail) = work that is unsatisfactory

It should be noted that there is no A,B,C D equivalent for the above grades. For clarification of some of the other more mysterious grades that may appear on your transcript (INC, R, AB, CP), please refer to the GSAPP website.

Auditing

GSAPP students cannot officially audit courses, however, you may sit in on a course with the permission of the instructor or department. These courses will not appear on your transcript and you may not retroactively receive credit, but this is a good way to experience some amazing classes without worrying about what happens when your mid-review rolls around.

Choosing Classes

www.arch.columbia.edu/courses

The course syllabi and studio descriptions are available on the GSAPP website.

Find the semester you want and browse the syllabi at your convenience. Do not ask the administrative staff for hard copies of the syllabi—you can print them from the website. Students select their studio critics in a lottery that is organized and run by the student representatives on the Program Council following presentations made by the faculty (see STUDIO LOTTERY). You should also know that seminars generally have limited enrollment and the most popular ones (i.e., those that fulfill difficult distribution requirements) are usually oversubscribed. Typically, the professor

will select the students for the course after considering the reason for your interest in the course and, also, the time you have left at the school (i.e., third-year students get priority). Talking to a professor after class or emailing him/her if you are really interested in the course can help skirt the seniority issue. Your professor should be give you a syllabus and where to purchase/acquire course materials on the first day of class. More often than not, the syllabus can be downloaded as PDFs through Courseworks.

Course Evaluations

This is your turn to rave or complain about a class or instructor. Help instructors and the administration by evaluating your classes each semester. These evaluations are available online through Courseworks and an email will be sent to you when the evaluations are available. All comments are confidential. You should keep track of comments over the duration of the course, so you can be more precise in your evaluation.

Abstract and Archiving

<https://www.arch.columbia.edu/abstract>

Abstract is the GSAPP's publication of student work. Critics and professors select work at the end of the semester, and if chosen, you will be contacted to submit images, drawings and/or models for archiving. This does not necessarily mean you get a high pass or that you were the best in the studio. It only means you must submit your work to Abstract staff, and it will be considered for publication. Detailed instructions on file formats and other specifications will be sent to you via email. You can check out the past year's Abstracts on GSAPP's website.

School Life

For more information:
<https://www.arch.columbia.edu/student-resources>

Program Council

Each program at the school has their own Program Council of elected students. These are the liaisons between you and the faculty/ administration. Made up of representatives from each class, you will vote for your reps at the beginning of the fall term. Council members meet with the Dean every few weeks to discuss student ideas and issues. Speeches and elections will be held just prior to a studio meeting early in the semester. Look out for announcements and election sign ups on the doors to each studio.

Student Publications

Columbia is famous for its students' passion to publish. New students can help with publications already in motion, or you can start your own in response to something being said (or not being said). Ask around to find out who is running one and how to get involved.

Student Organizations

<https://www.arch.columbia.edu/books/reader/598-columbia-gsapp-student-organization-handbook>

Student organizations at GSAPP are among the most important drivers of students' lives and experience during their time here. Student organizations shape the public conversation, provide social space, mentor and guide students, and create communities.

Managing a student organization requires combination of vision, dedication, financial oversight, flexibility, and the ability to plan and execute plans. There are benefits and responsibilities that are inherent

with membership in a GSAPP student organization. A student organization consists of any recognized group of students who register with the Office of Academic and Student Affairs, receive funding, and contribute to the engagement initiatives of GSAPP.

You can form a new student organization and there is a handbook supplied by the school to help you do it.

CURRENT STUDENT ORGANIZATIONS

- 6on6
- AAD Student Committee
- AIAS (GSAPP Chapter)
- APA Student Representative Committee
- Black Student Alliance at Columbia University's Graduate School of Architecture Planning and Preservation (BSA+GSAPP)
- Design Driven Development Club
- GreenSAPP
- GSAPPX+ (GSAPP Chapter of ArchiteXX)
- International Real Estate Club
- International Real Estate Investment Club
- Latin GSAPP Association
- NOMA (GSAPP Chapter)
- Masaha
- PropTech Club
- Queer Students of Architecture, Planning and Preservation (QSAPP)
- "Real Estate Private Equity Club"
- Students of Color Association (SOCA)
- Sustainable Development Club
- The East Asia Real Estate Club
- UP Program Council
- Urban China Network
- URBAN Magazine
- Women in Real Estate Development

STUDENT ORGANIZATIONS DESCRIPTIONS ARE ON THE GSAPP WEBSITE! MANY HAVE THEIR OWN WEBSITES

<https://www.arch.columbia.edu/student-organizations>

And More Words of Advice

Collected over time from past and continuing students.

35. Imitate. Don't be shy about it. Try to get as close as you can. You'll never get all the way, and the separation might be truly remarkable. We have only to look to Richard Hamilton and his version of Marcel Duchamp's large glass to see how rich, discredited, and underused imitation is as a technique.

36. Scat. When you forget the words, do what Ella did: make up something else...but not words.

37. Break it, stretch it, bend it, crush it, crack it, fold it.

38. Explore the other edge. Great liberty exists when we avoid trying to run with the technological pack. We can't find the leading edge because it's trampled underfoot. Try using old-tech equipment made obsolete by an economic cycle but still rich with potential.

39. Coffee breaks, cab rides, green rooms. Real growth often happens outside of where we intend it to, in the interstitial spaces—what Dr. Seuss calls “the waiting place.” Hans Ulrich Obrist once organized a science and art conference with all of the infrastructure of a conference—the parties, chats, lunches, airport arrivals—but with no actual conference. Apparently it was hugely successful and spawned many ongoing collaborations.

40. Avoid fields. Jump fences. Disciplinary boundaries and regulatory regimes are attempts to control the wilding of creative life. They are often understandable efforts to order what are manifold, complex, evolutionary processes. Our job is to jump the fences and cross the fields.

41. Laugh. People visiting the studio often comment on how much we laugh. Since I've become aware of this, I use it as a barometer of how comfortable we are expressing ourselves.

42. Remember. Growth is only possible as a product of history. Without memory, innovation is merely novelty. History gives growth a direction. But a memory is never perfect. Every memory is a degraded or composite image of a previous moment or event. That's what makes us aware of its quality as a past and not a present. It means that every memory is new, a partial construct different from its source, and, as such, a potential for growth itself.

43. Power to the people. Play can only happen when people feel they have control over their lives. We can't be free agents if we're not free.

Supplies

When you need to go off-campus.

***denotes the best

Art and Architectural Supplies

While you might do a bunch of your work at Columbia on the computer, there are those random necessary tools that you will inevitably need along the way. We've begun compiling a list of places to get supplies or random gear that might help you on your journey.

JANOFF'S***

2870 Broadway
@ 111th Street
212 866-5745

The closest supply shop outside of the school.
A good place if you need something quickly, but it is expensive.

COMPLEAT SCULPTOR

110 W 19th St
212 243-6074
www.sculpt.com

A good source for plaster, resin, information about casting, cement, wax and clay, and all the other things you can't do in studio.

They recently moved, so don't be surprised if you get directions to a different place.

BLICK ART SUPPLIES****

21 E 13TH St.
212 924-4136
+261 W 125TH St.
212 222-7000
www.dickblick.com
(many other locations too)

JERRY'S NY CENTRAL

111 4th Avenue
@ E. 12th St.
212 473-7705
www.nycentralart.com

LEE'S ART SHOP

220 West 57th Street
212 247-0110
www.leesartshop.com

Unusual and Random Materials

CANAL PLASTICS CENTER***

345 Canal Street
Between Wooster Street and Greene Street
212 925-1032
www.canalplasticscenter.com

INDUSTRIAL PLASTICS

P.O. Box 210
West Orange, NJ 07052
212 226-2010
www.industrialplasticsnyc.com

MODELTOOL.COM

406 70th Street
Darien, Illinois 60561
815 254-8320
www.modeltool.com

A great online source for glues, basswood, metals, blades and Dremel stuff!

**MORE CONVENIENT COPYING
LOCATIONS:**

**YOU MAY ALSO MAKE COPIES IN
AVERY LIBRARY, THE JOURNALISM
SCHOOL, THE SCIENCE AND
ENGINEERING LIBRARY, ETC. USE
YOUR FLEX ACCOUNT ON YOUR
COLUMBIA ID.**

**CHECK ONLINE:
AMAZON CAN ALSO
SURPRISINGLY BE A
GREAT SOURCE**

Supplies

When you need to go off-campus.

***denotes the best

Metals and Foam

MCMMASTER-CARR SUPPLY COMPANY
473 Ridge Rd.
Dayton, NJ 08810-0317
732 329-3200
www.mcmaster.com

www.onlinemetals.com

www.generalplastics.com

A good source of light, medium, and high density foam

CANAL RUBBER
329 Canal St
212 226-7339

Print and Copy

VILLAGE COPIER
1181 Amsterdam Ave.
212 666-4777
www.villagecopier.com

FEDEX KINKO'S
221 W. 72nd Broadway @ 72nd St.
212 362-5288
www.fedex.com

COLUMBIA COPY CENTER
2790 Broadway
Between 107th and 108th
212 865-1212

COLUMBIA PRINT***
Located in the Journalism School, this University Service offers a variety of print options, but typically is more expensive than village copier.
<http://print.columbia.edu/>

Lumber

AJO ACE HOME & LUMBER DEPOT
610 Columbus Ave
@ West 90th Street
212 580-8080
www.acehardware.com

METROPOLITAN LUMBER MIDTOWN***
617 11th Avenue
Between 45th and 46th Streets
866 375-7321
Huge selection of tools and materials. Open 7 days and they deliver.

PRINCE LUMBER COMPANY
404 West 15th Street
212 777-1150
Free delivery for large orders. Many non-lumber supplies.

Large Reproduction

NATIONAL REPROGRAPHICS***
44 West 18th Street
212 366-7250
www.nrinet.com

NEW YORK COPY CENTER
204 East 11th Street
212 673-5628
www.nycc.com

STAPLES
105 E 125th
212 864-5747
+2248 Broadway (81st and Broadway)
212 712-9617

Facilities Directory

Avery Hall (by level)

700	ATTIC STUDIO
600	STUDIOS 600 North; 600 South CLASSROOMS Ware Lounge RESTROOMS
500	STUDIOS 500 North; 500 South CLASSROOMS RM 504; RM 505 RESTROOMS
400	ADMINISTRATION Admissions Student + Academic Affairs Architecture Career Services Dean's Office Development + Alumni Relations Faculty Mailboxes Financial Operations Historic Preservation Publications Abstract Events Communications Real Estate Development Urban Design Urban Planning CLASSROOMS RM 408; RM 409; RM 412 RESTROOMS
300	CLASSROOMS RM 300 (Mezzanine) LIBRARY Avery Architectural and Fine Arts Library
200	CONNECTION TO BASEMENT Gallery
100	BROWNIES CLASSROOMS Wood Auditorium (RM 113); RM 114; RM 115 OUTPUT SHOP RESTROOMS, VENDING

Buell Hall

300	CLASSROOMS FACULTY OFFICES RESTROOMS
200	CLASSROOMS FACULTY OFFICES RESTROOMS
100	EXHIBITIONS West Gallery RESTROOMS

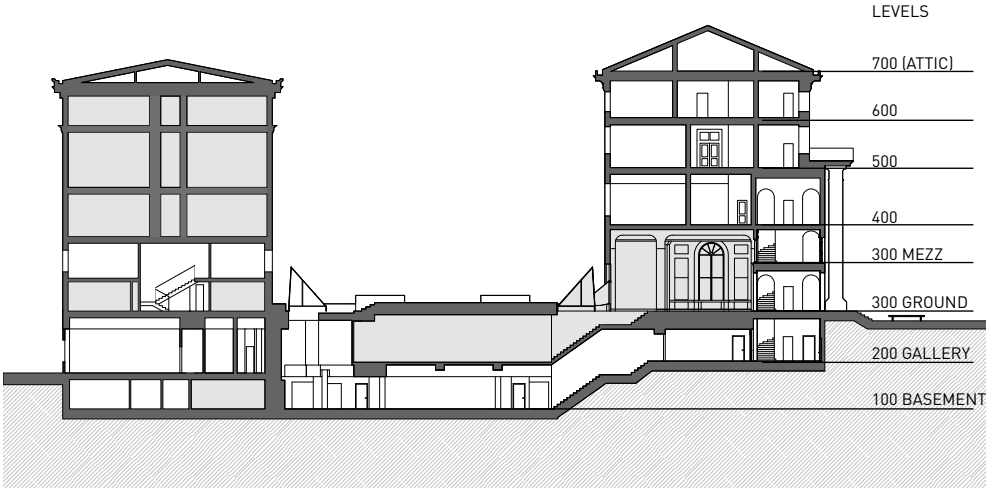
Fayerweather Hall

300	STUDIOS Historic Preservation
200	STUDIOS Urban Planning Real Estate Development COMPUTER LABS RM 202, Digital Classroom Urban Planning Lab GENDER NEUTRAL RESTROOM
300 MEZZ	RM 320, 321 (A/V), 323

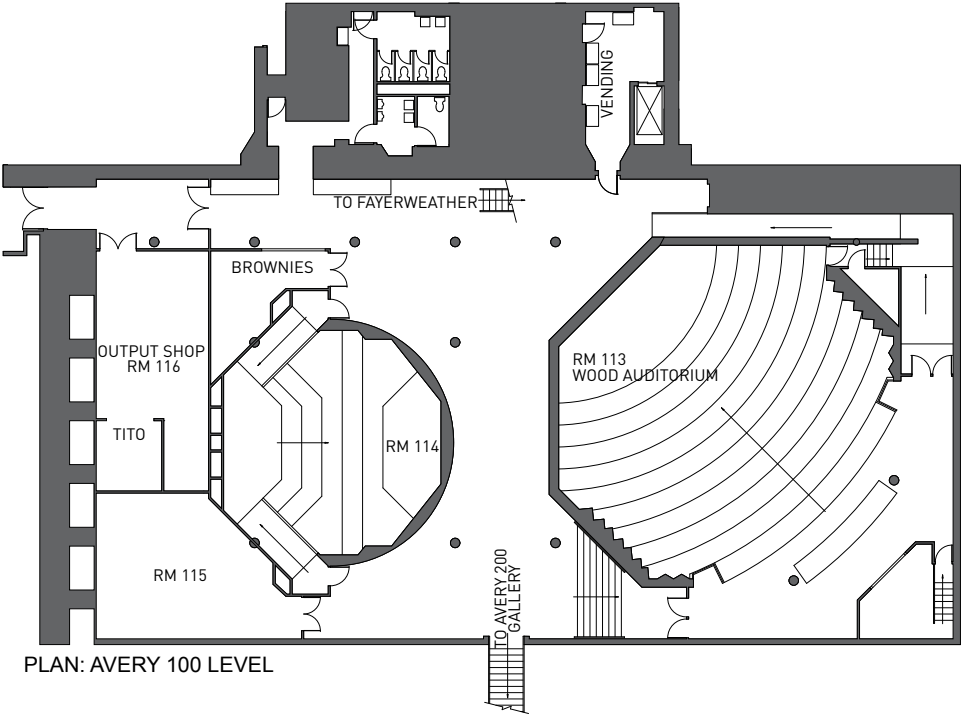
Schermerhorn Hall

900	OFFICES Art History Slide Library
600	HISTORIC PRESERVATION LAB CENTER FOR SPATIAL RESEARCH
100	OFFICES FAB LAB MAKING STUDIO
BSMT	CASTING ROOM

Avery Hall

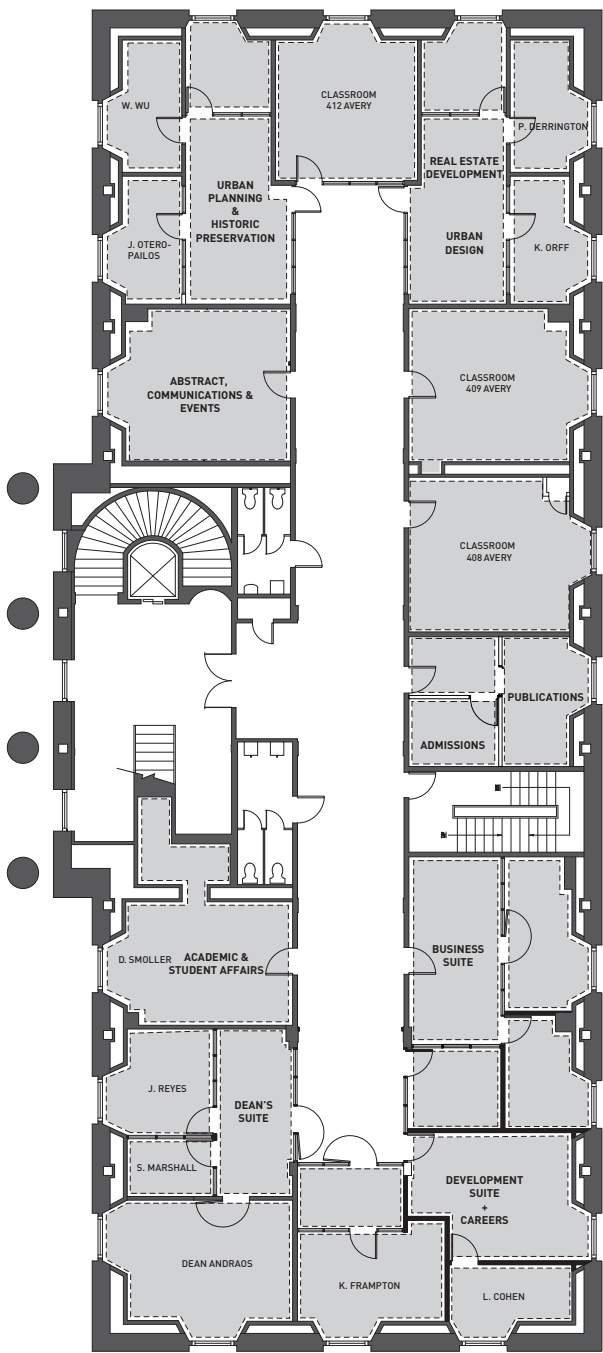


BUILDING SECTION: AVERY



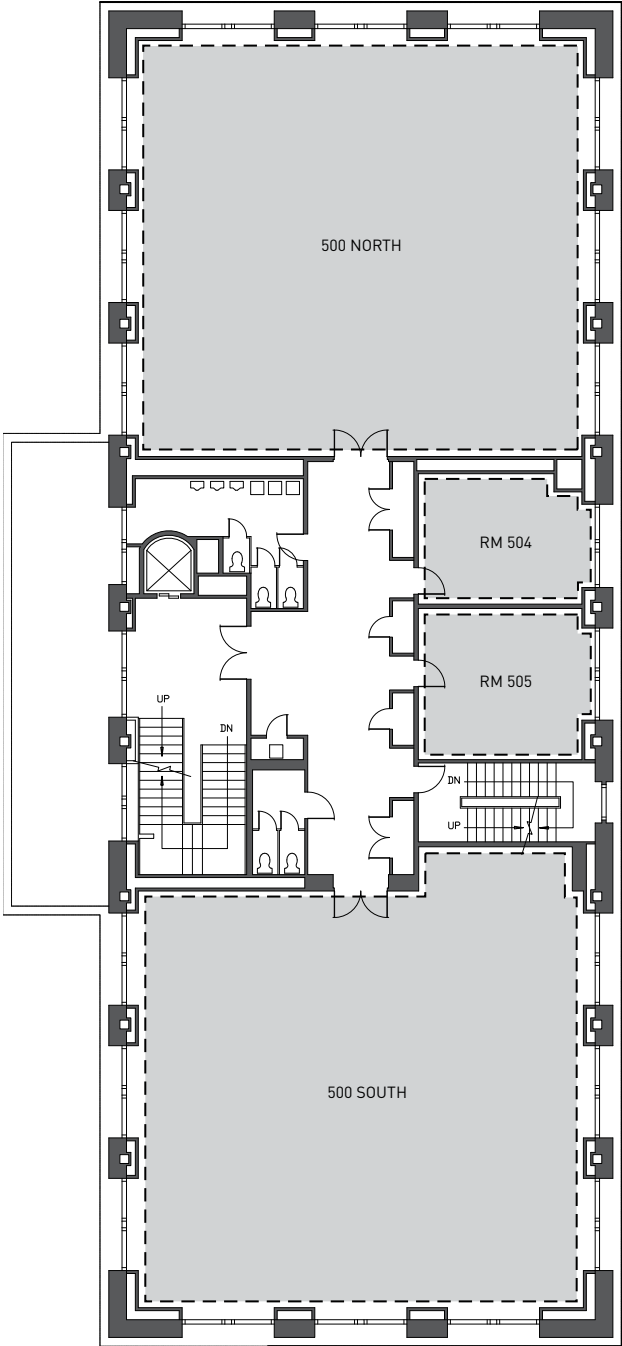
PLAN: AVERY 100 LEVEL

Avery Hall



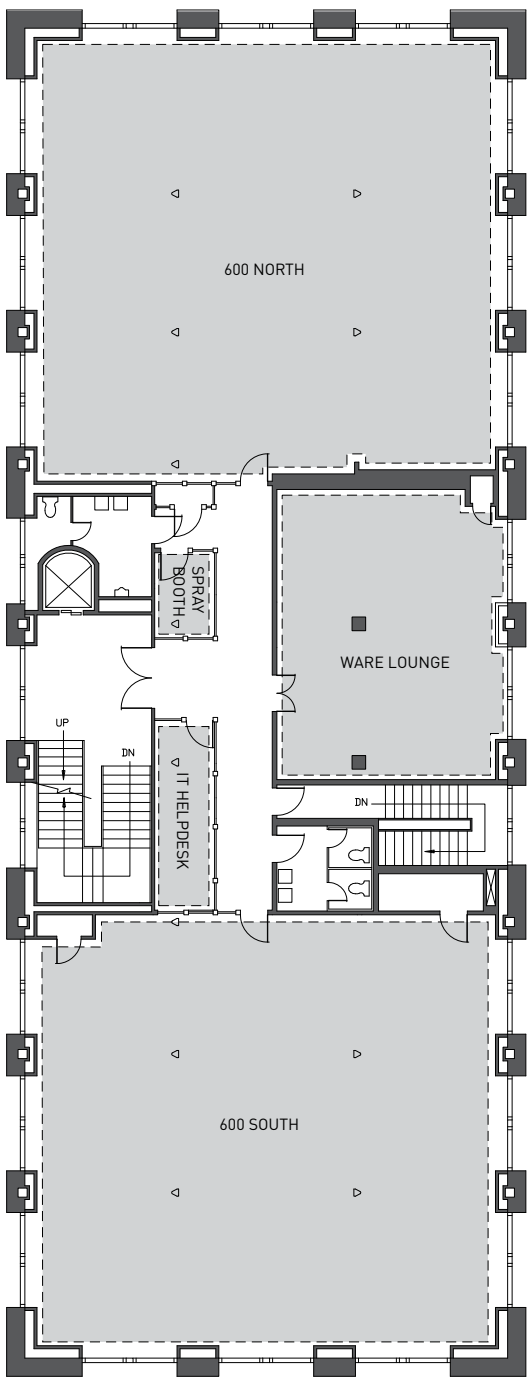
PLAN: AVERY 400 LEVEL

Avery Hall



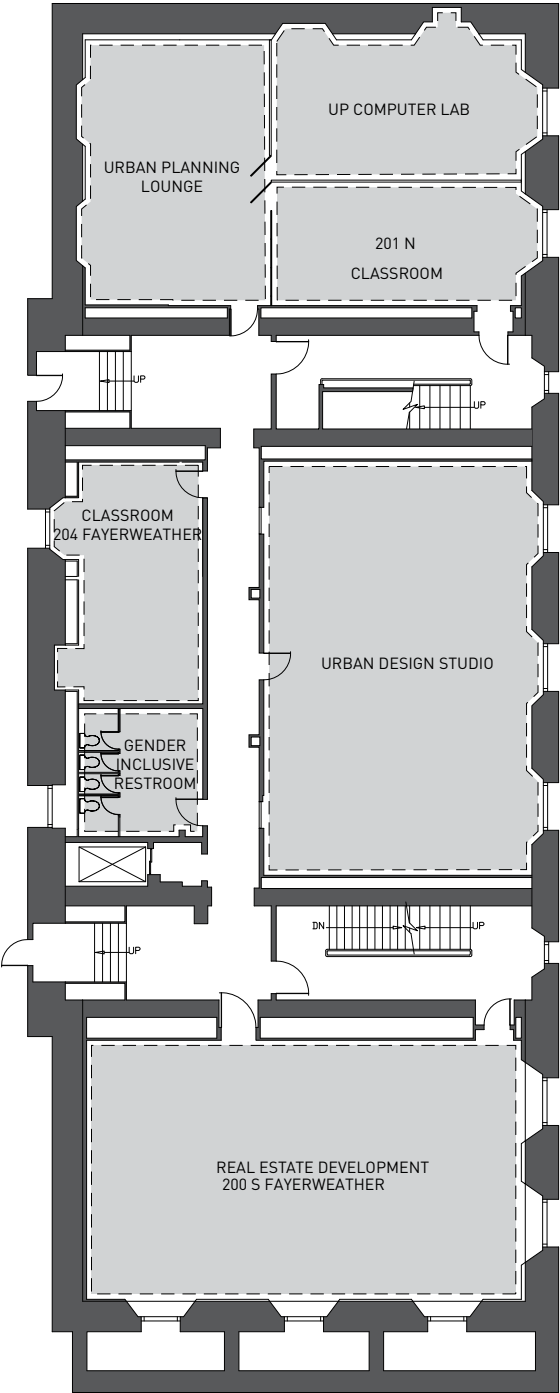
PLAN: AVERY 500 LEVEL

Avery Hall



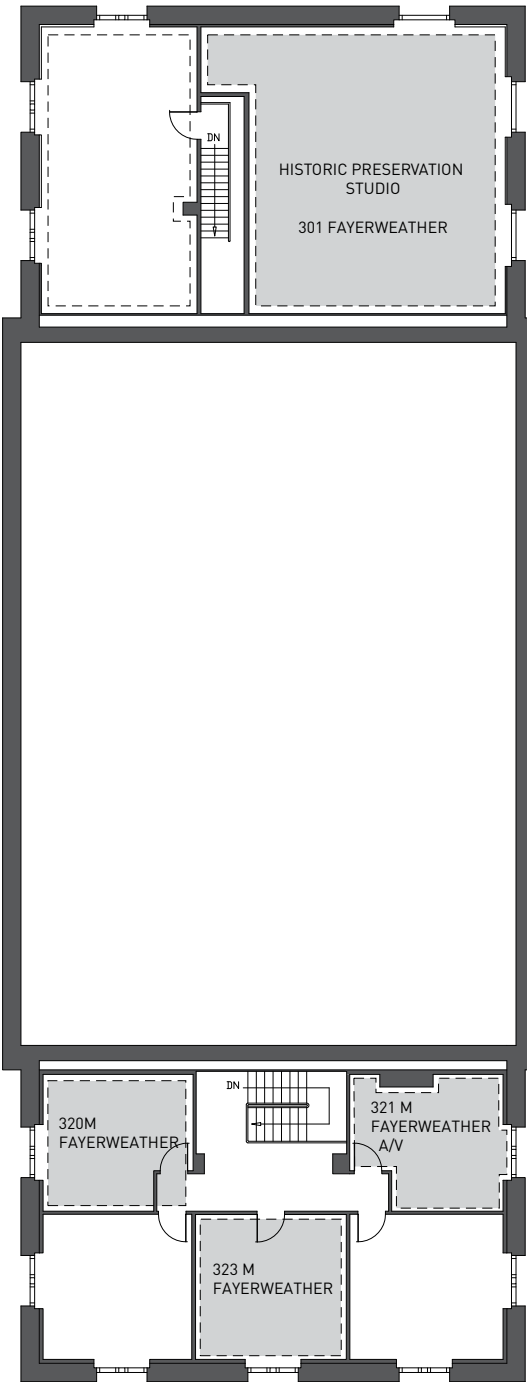
PLAN: AVERY 600 LEVEL

Fayerweather Hall



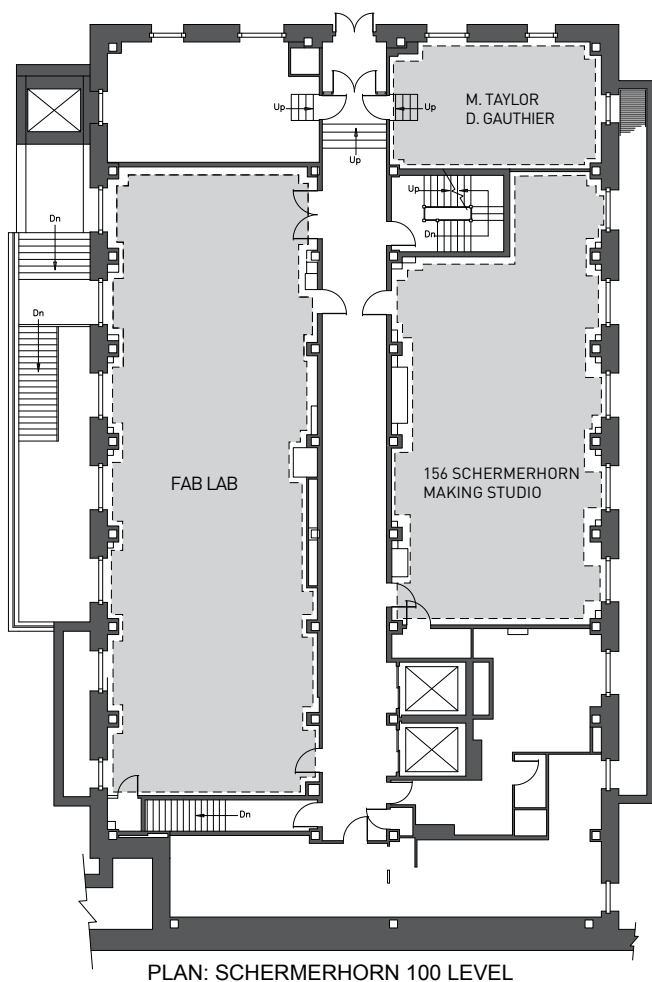
PLAN: FAYERWEATHER 200 LEVEL

Fayerweather Hall

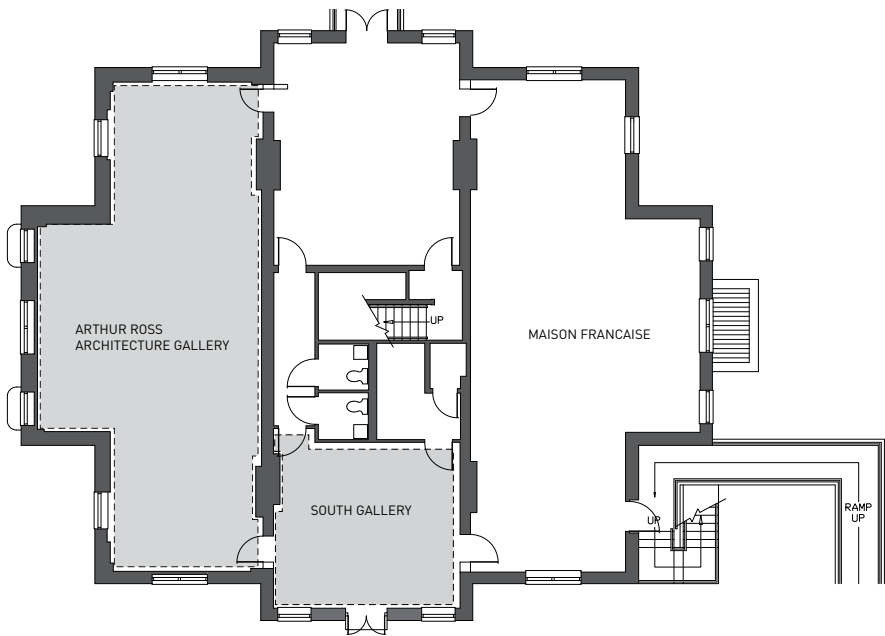


PLAN: FAYERWEATHER 300 LEVEL

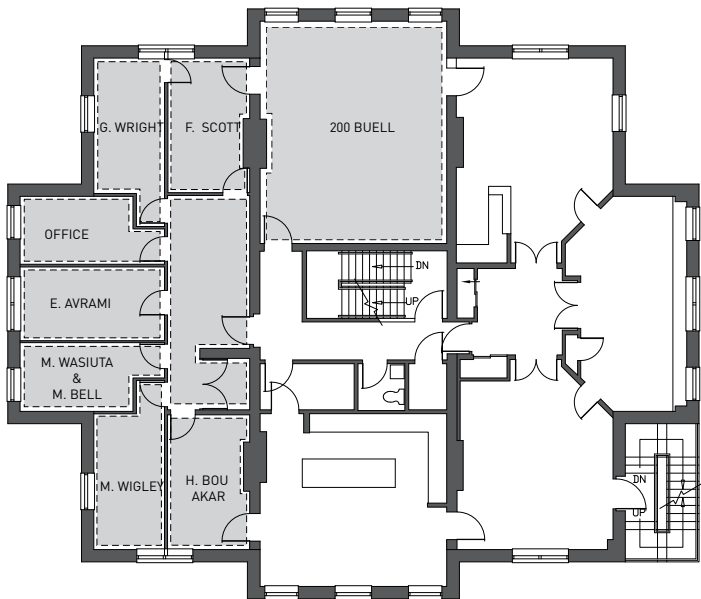
Schermerhorn Hall



Buell Hall

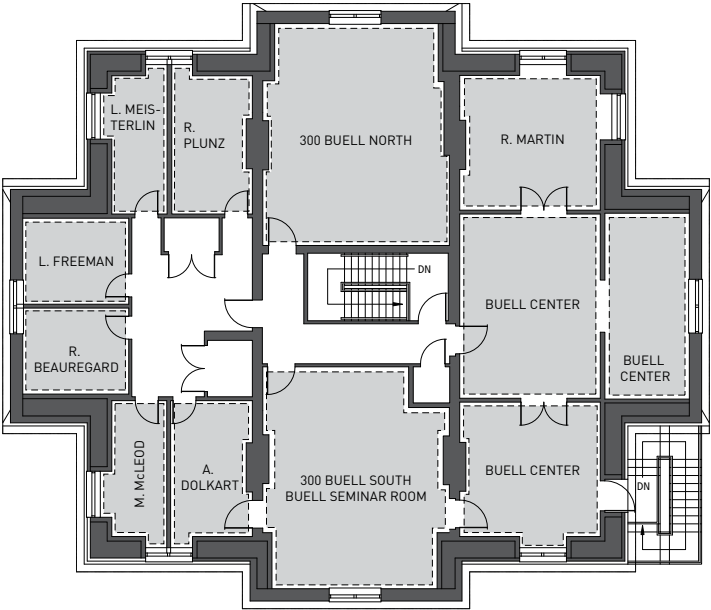


PLAN: BUELL 100 LEVEL



PLAN: BUELL 200 LEVEL

Buell Hall

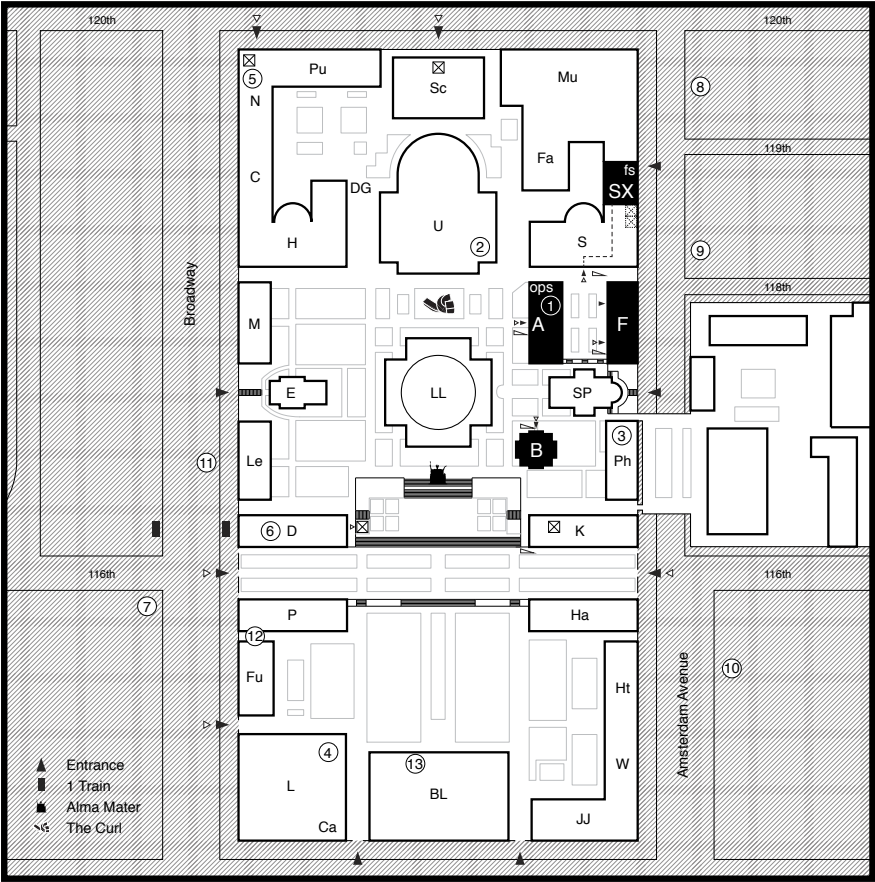


PLAN: BUELL 300 LEVEL



Campus Life

For more information:
<https://universitylife.columbia.edu/>



GSAPP

- A Avery Hall / Library
- B Buell Hall (Buell Center/
Ross Gallery)
- F Fayerweather
- S Schermerhorn
- SX Schermerhorn Extension
- fs Fab Shop
- ops Output Shop

ACCESSIBILITY

- △ Entrance
- ⊠ Elevator
- ▤ Ramp

BUILDINGS

- BL Butler Library
- Ca Carman
- C Chandler
- D Dodge
- DG Dodge Gym
- E Earl
- Fa Fairchild
- Fu Furnald
- H Havemeyer
- Ha Hamilton
- Ht Hartley
- JJ John Jay
- K Kent (Registrar/
Student Services)

L

- Lerner Hall
(Student Services)
- LE Lewisohn
- LL Low Library
- M Mathematics
- Mu Mudd
- N NW Corner Building
- P Pulitzer
- Ph Philosophy
- Pu Pupin
- Sc Schapiro
- SP St. Paul's
- U Uris
- W Wallach

FOOD

- 1 Brownie's Cafe
- 2 Uris Deli
- 3 Nous
- 4 Blue Java Cafe
- 5 Joe Coffee
- 6 Joe Coffee Outpost
- 7 Shake Shack
- 8 Subs Conscious
- 9 Friedman's
- 10 Hamilton Deli
- 11 Food Trucks
- 12 Joe Coffee
- 13 Blue Java Cafe

Campus Life

For more information:

<https://universitylife.columbia.edu/>

Hello, abc1212...

Your Columbia UNI is your gateway to using many services on campus and at GSAPP.

UNI: Your UNI is your University Network ID. It is the same as your email prefix (if your email is abc2121@columbia.edu, your UNI is abc2121). When you created your email account, you selected a password: this combination of your UNI and password will give you access to email, Student Services Online (for grades and account info), Canvas, online library services, other University services and the GSAPP computers. You need to update the password every 6 months unless you use dual authentication.

The ID Sticker

You'll need an ID sticker to use some of the free or reduced-price services discussed later. Your Columbia ID card will have a sticker on it when you receive it when you pick it up. Every semester thereafter you will need to get a sticker at the ID Center in 204 Kent Hall (first building on your right if you enter campus from Amsterdam).

In addition to being the place where you get your ID sticker (or a replacement ID should you misplace yours), Kent Hall is also where you can get advice about financial aid or straighten out your work-study status. Much of this can also be answered on-line at (askus.columbia.edu). You can check on your enrollment status, update your address, register for classes, check on your grades, and view how much your education is costing you on the Student Services website: ssol.columbia.edu

Studying Outside Avery Hall

PHILOSOPHY HALL GRADUATE STUDENT LOUNGE

Philosophy Hall is located behind Buell on the other side of the chapel. The building houses the central offices for the Graduate School of Arts and Sciences (GSAS) but it also has the graduate student lounge. When you enter the building, take a left; the lounge is at the end of the hall. There are some comfortable chairs and a great lunch spot. It is also a chance to get out of Avery and meet some other graduate students during daylight hours.

OTHER LIBRARIES

All of the Columbia libraries are available for GSAPP student use and are great alternative places to study (particularly since Avery itself can get crowded with visitors around exam time). Here are some alternatives:

- Butler Library: open 24 hours a day
- Business School library in Uris
- East Asian Studies library in Kent Hall
- 6th floor lounge of SIPA
- Library at Teachers College

Campus Life

For more information:

<https://universitylife.columbia.edu/>

Fitness

<http://www.dodgefitnesscenter.com/>

In case walking up and down the stairs at Avery is not enough, we thought we would remind you that the Dodge Physical Fitness Center is located on campus and is FREE (or, at least, included in your tuition). It has an indoor pool, tennis courts, basketball courts, weights, an indoor running track, saunas, and much more. It also offers many types of fitness classes that you can sign up for usually for a small additional charge (classes range around \$15 to \$50 a semester) and is a showering option on review mornings if you live far away. You can also rent a locker for the semester.

Writing Help

www.www.college.columbia.edu/core/uwp/writing-center

The Writing Center is located in the Undergraduate Writing Program office at 310 Philosophy Hall. You can sign up for a 45-minute session in the appointment book located at the office. There are some suggestions about how to get the most out of your appointment on the Writing Center website but, everyone who has used them has highly recommended their services.

If English is your second language, the School of Continuing Education offers various classes in their American Language Program that are geared toward people who are learning English proficiently. This includes evening programs and a summer program designed specially for students entering a graduate degree program in the United States.

Campus Services

NOTE:

When calling from a campus phone, it is not necessary to dial the entire '854' prefix. You can simply dial '4' instead. For example, to call the Security office from the campus phone, dial 4-2797.

CAMPUS INFORMATION

Financial Aid	202 Kent	854-7040
Registrar	205 Kent	854-4400
Account Balance	205 Kent	854-4440
Holds	205 Kent	854-4440
ID Card Office	204 Kent	854-7225
Housing Office	401 W119th St	854-9300
OCHA	401 W119th St	854-2773
UAH	401 W119th St	854-2775
ISSO	524 Riverside Dr	854-3587

AMBULANCE dial x99 from any campus phone

HEALTH SERVICES

John Jay Hall, 4th Floor	854-7426
After-hours urgent care	854-7426
Emergencies (Public Safety)	854-5555
Rape Crisis	854-4357
Counseling + Psychological Services	854-2878

ST. LUKE'S-ROOSEVELT HOSPITAL (114th @ Amsterdam)

Emergency Room	523-3345
----------------	----------

BOOKSTORE

2922 Broadway (Lerner Hall)	854-4131
-----------------------------	----------

COLUMBIA SECURITY

111 Low Library	854-2797
-----------------	----------

SAFETY

Public Safety	854-SAFE
Alliance Patrol	222-7121
NYPD 26th Precinct	678-1311

Safety and Well-Being

For more information:

<https://universitylife.columbia.edu/>

As architects, we definitely know what it means to get stressed out, but sometimes life can get to be too much. The first step is to take a deep breath, relax, and remember that help is nearby.

Ask Alice!

www.goaskalice.columbia.edu/ask.html

Columbia University's Health Services has a website where you can seek words of wisdom by asking anonymous questions related to fitness, sexuality, nutrition, emotional health, relationships, sexual health, alcohol and other drugs. You can also search archives of questions and answers.

Counseling + Psychological Services (CPS)

CPS offers free psychological counseling to all students who have paid the Health Service Fee. Their office is located on the 8th floor of Lerner Hall and is open M – Thurs from 8AM – 7:00PM and F until 5:00pm. You can call 212-854-2878 to schedule an appointment. There is also always an after hours person on call at 212854-9797.

Health Services

Columbia University Health Services are located on the 3rd and 4th floors of John Jay Hall (next to Butler Library). Appointments are recommended and can be made by calling 212 854-7426. The following numbers are also useful:

After-hours urgent health concerns	212- 854-9797
Emergencies	212 854-5555
Rape Crisis/Anti-Violence Support	212 854-WALK
HIV Testing and Treatment / LGBTQ Support and Sexual Health Peer Counseling	212 854-6655

***In the event of a medical emergency, however, it is probably best to contact the nearest emergency room, which is St. Luke's-Roosevelt Hospital (at 114th and Amsterdam): 212 523-3355 or dial 911.

On-Demand Evening Shuttle

8:00PM-3:00AM

212 854-SAFE (7233)

<https://transportation.columbia.edu/content/via-evening-shuttle>

Morningside Heights is a safe neighborhood, but remember that you are still living in New York City. The on-demand, point-to-point Public Safety Evening Shuttle by Via has replaced the safety escort service at the Morningside campus. Download the app and remember your ID when using when using this service.

The service will begin at 6:00 p.m. and run through 3:00 a.m. the following morning. The first two hours of service, from 6:00 p.m. through 8:00 p.m., will be "corner-to-corner." This means shuttles will pick up and drop off passengers at the nearest corner to their destination. From 8:00 p.m. through 3:00 a.m., the service will be "door-to-door," meaning shuttles will pick up and drop off passengers at the address they select on the app when booking.

Please also be aware that throughout the year, the start time of the service will change. For example, in the winter months when the sun sets earlier, service will start at 4:00 p.m. Please familiarize yourself with this calendar of monthly start times. Also, if you haven't already gotten a new promo code for the fall, you'll be prompted to do so before you book a ride.

Safety and Well-Being

For more information:

<https://transportation.columbia.edu/content/via-evening-shuttle>

Evening Shuttle Coverage Map

HOURS OF OPERATION

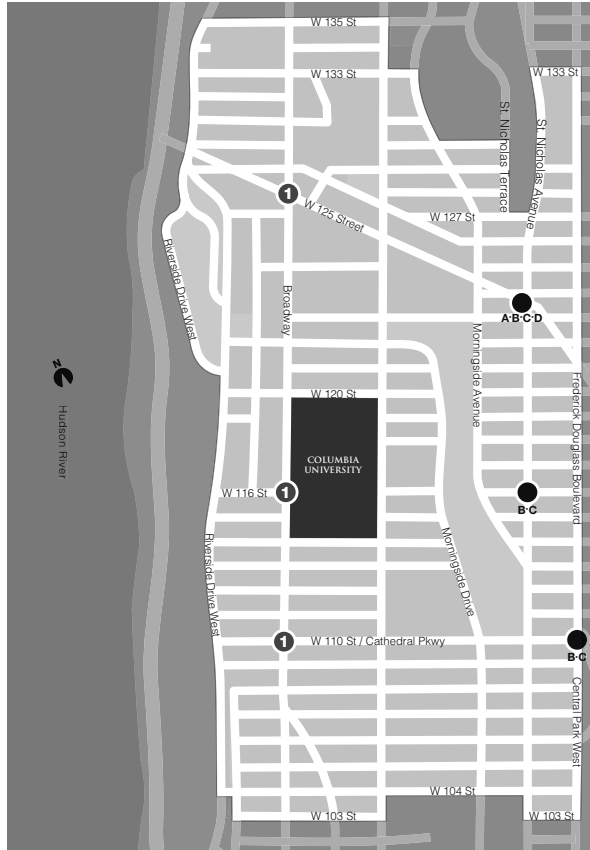
The Evening Shuttle operates seven days a week every evening until 3:00 a.m. the following morning, including University holidays. Service begins at different times depending on the month.

SHUTTLE ACCESSIBILITY

Via provides wheelchair accessible vehicles upon request. Make sure to mark your profile within the app accordingly if you require a wheelchair accessible vehicle.

BRING YOUR ID

All riders must present their Columbia ID to the driver before entering the vehicle. If you do not have your Columbia ID, a state ID is acceptable.



Eating on Campus

For more information:
<https://dining.columbia.edu/>

Alice's Cafe

International Affairs Building (SIPA)

Located on the 6th floor, this cafe has pricey but good pre-made sandwiches, coffee and espresso. They also do breakfast pastries, yogurt, and have a row of vending machines that exceed Avery's options. To get there from Avery: cross the Law School plaza above Amsterdam and make a left.

Joe Coffee

IN THE JOURNALISM SCHOOL

M – F	7AM – 8PM
S – S	9AM – 5PM
NORTHWEST CORNER BUILDING (SCIENCES)	
M – F	8AM – 8PM
S – S	9AM – 6PM

Possibly the best coffee you'll find on campus, but also more expensive. They sell slightly over-priced but tasty salads, sandwiches soups, pastries and other healthy snacks. Located on the main floor.

Nous Espresso Bar

M – THURS	8:30AM – 8PM
F	8:30AM – 6PM
S – S	10AM – 5PM

Located in the 1st floor of the Philosophy building next to Avery Hall.

Law School Cafeteria

M – F	8:30AM – 4PM
-------	--------------

Located on the 2nd floor of the Law School, this cafeteria has a good grill, sushi bar, sandwich bar, soups and refrigerated snacks. The best-kept secret about this place is the sunny, outdoor patio.

Lerner Hall

This is the SW building, designed by Bernard Tschumi. They serve hot meals and refrigerated sushi and salad options. Also, if you like bubble tea, this is the closest option.

Faculty House

Faculty House has a large dining room with excellent views and bright sun. The Garden Café on the 3rd floor serves high quality, healthy food at very reasonable prices, including hot lunches, sandwiches, soup, fruit, and a salad bar. Once you find the Faculty House, go to the 3rd floor.

Uris Hall Cafeteria

LERNER HALL (BUSINESS), MAIN FLOOR

M – W	7:30AM – 7PM
THURS – F	7:30AM – 5PM

Located in the Business School's Lerner Hall, this cafeteria has sandwich options, a hot meal of the day, a tossed salad bar, four daily soup selections, other snacks and coffee.

Using your Columbia ID

<https://ssc.columbia.edu/id-center>

You can add money to your ID card to pay for food and other services on campus by adding money to your Flex Account or Dining Dollars. Use your ID in any campus dining venue except for Brownie's in Avery and the café on the 6th floor of SIPA. If you buy food with your ID, it will be exempt from sales tax. Your ID can also be used in all of the bookstores, for student services in Lerner Hall and for making photocopies in the libraries. To add value to your card or learn more about these features, visit the ID Center website.

Services Close-by

For more information:

<https://universitylife.columbia.edu/>

Fitness Off-Campus

LIFE IN MOTION YOGA

2744 Broadway (@ 105th), 3rd Floor 212 666-0877

Popular venue for all varieties of yoga at various locations throughout the city.

BODY STRENGTH FITNESS

250 W.106th Street 212 316-3388

Reasonable low-key neighborhood gym.

Affiliated with Life in Motion Yoga and rumored to have more (working) equipment than Dodge.

EQUINOX

2465 Broadway (@92nd) 212 799-1818

This place is undeniably expensive but, having once been a member before going to architecture school... it smells good, looks good, and makes you feel worth it. Columbia students get their membership fee waived, and the toiletries in the club bathroom are probably better than anything you'd buy for yourself.

Bookstores

COLUMBIA UNIVERSITY BOOKSTORE

2922 Broadway (@ 115th) 212 854-4132

Like most university bookstores, this one has gone the way of Barnes & Noble. You can get your Columbia-issue sweatshirt and golf club covers here but otherwise, don't expect any surprises.

BOOK CULTURE

536 W.112th Street 212 865-1588

Book Culture is a great bookstore. You will likely find the titles and readers you need for history papers and classes and prices that compete with Amazon.com.

New York City is replete with wonderful bookstores that are meant to be accidentally discovered. A few old favorites are listed here in no particular order:

Biography Bookshop (400 Bleecker Street)

Spoonbill & Sugartown (218 Bedford Avenue, BK)

Three Lives & Co. (154 W.10th Street)

Printed Matter (195 10th Avenue)

St. Mark's Books (31 3rd Avenue)

Stationery

In case you need a Sharpie or Super 77 with urgency, here is a very short list of stationers on the 1 line who might carry such a thing.

IVY LEAGUE STATIONERS

2955 Broadway (@ 116th) 212 316-9741

Generally overpriced unless you are buying coin-sized manila envelopes or glassine paper, but good in a pinch.

STAPLES

2248 Broadway (@ 80th) 212 712-9617

If you need a spool of blank DVDs or fluorescent labels, this is your closest Staples via subway (there is also one on 125th).

B+H

(420 9th Avenue @ 34th) 800 606-6969

The hours here can be unpredictable, but the paper and camera selection is unbeatable and the delivery operation is mesmerizing.



Off-Campus

Upper West Side +
Morningside Heights Neighbourhood

Post Offices

NEAR COLUMBIA

West 112th between Broadway and Amsterdam
104th between Broadway and Amsterdam.

PENN STATION

380 W. 33rd

Although it may sound ridiculous to travel all the way to Penn Station to use the Post Office, this location is efficient and doesn't run out of stamps. Expect long lines the day before taxes are due and the night before college applications have to be postmarked.

Storage Companies

Gotham Mini-Storage
212 541-7919
www.gothamministorage.com

Tuck-It-Away
212 368-1717
www.tuckitaway.com

Whitehall Mini-Storage
212 587-1111
www.whitehallstorage.com

Moving Companies

Ironman Moving Inc.
718 297-4050
www.ironmanmoving.com

Moishe's Moving System
212 466-1950
www.moishes.com

The Padded Wagon Inc.
212 222-4880
www.paddedwagon.com

Sofia Brothers Inc.
212 873-3600
www.sofiastorage.com

Utilities

Con Ed Customer Service	212 614-2100
Con Ed Emergency Line	212 683-8830

Dry Cleaning

Bon French Cleaners 112th and Broadway

Laundry

Suds Laundromat	1012 Amsterdam Ave
Bubbles Laundromat	107th and Broadway

Groceries

Other options are included on the loosely defined list of restaurants (Apple Tree, Morton Williams, et. al.), but here are your best bets for cheaper, fresher, food if you happen to be cooking. If you are throwing a party and have the foresight to plan in advance, FreshDirect is also an option. The food arrives fresh from a mysterious place in Queens and, particularly for larger orders, they can in fact be cheaper than going to the store.

H MART

2828 Broadway 110 Street

Asian specialty market that just opened, enough said.

FAIRWAY MARKET 2328

2127 Broadway (@75th)

This market tend to be unfathomably crowded, but the huge location has a cold room where you wear special Fairway jackets while picking out your meat.

WESTSIDE MARKET

2171 Broadway (@110th)

It isn't Fairway, but this newly re-opened neighborhood favorite can often be cheaper than Morton Williams and has much shorter lines.

WHOLE FOODS

(100th and Columbus)

Mecca of organic foods and wines, this location is only a few blocks south of Columbia.

TRADER JOE'S

(Broadway and 72) + (NEW LOCATION! Columbus and 93)

With its own brand of reasonably priced, delicious snacks TJ's is a great place to pick up frozen foods, vegetarian and vegan snacks, nuts, cookies, and environmentally friendly cleaning products.

Off-Campus Dining

Morningside Heights Neighbourhood
Broadway Dining Options

ABSOLUTE BAGELS (\$)
2788 Broadway
212 932-2052

AMIGOS (\$\$)
2888 Broadway
212 864-1143

AMIR'S (\$)
Mediterranean, Falafel
2911 Broadway
212 749-7500

BETTOLONA (\$\$)
Great pizza and pasta
3143 Broadway
212 749 1125

CAFE NANA (\$\$)
Kosher, Middle Eastern
696 W 115th St
347 244-0033

CARMINE'S (\$\$)
Italian
2450 Broadway
212 362-2200

E's (\$)
American
2888 Broadway

CHAPATI HOUSE
Quick and good Indian Food
3153 Broadway
212 749 2200

CHIPOTLE (\$)
2843 Broadway
212 222-1712

**COMMUNITY FOOD
& JUICE (\$\$)**
American, Traditional
2893 Broadway
212 665-2800

DELUXE (\$\$)
Diner, American
2896 Broadway
212 662-7900

DIG INN (\$)
Farm-to-table
2884 Broadway
212 776-4047

DINOSAUR BAR-B-QUE (\$\$)
Barbecue, Wings
700 W 125th St
212 694-1777

FALAFEL ON BROADWAY (\$)
3151 Broadway
212 222 2300

**FAMOUS FAMIGLIA
PIZZERIA (\$)**
2859 Broadway
212 865-1234

**FIVE GUYS BURGERS
AND FRIES (\$\$)**
2847 Broadway
212 687-7701

HAAGEN DAZS (\$\$)
Ice Cream & Frozen Yogurt, Juice
Bars
2905 Broadway
212 662-5265

THE HEIGHTS (\$\$)
Southwestern, Tapas, Bar Food
2867 Broadway, 2nd FL
212 866-7035

JIN RAMEN (\$\$)
3183 Broadway
646 559 2826

KOREAN MILL (\$\$)
2895 Broadway
212 666-7653

KORONET PIZZERIA (\$)
2848 Broadway
212 222-1566

KURO KUMA (\$\$)
Very good coffee
121 La Salle St
347 577 3177

LE MONDE (\$\$\$)
French, Bistro
2885 Broadway
212 531-3939

MEL'S BURGER BAR (\$\$)
2850 Broadway
212 865-7100

MILANO MARKET (\$)
Delis, Sandwiches
2892 Broadway
212 665-9500

PINKBERRY (\$\$)
Frozen Yogurt
2873 Broadway
212 222-0191

PISTICCI (\$\$ \$)
A hidden Italian gem.
125 La Salle St
212 932-3500

SUN-CHAN (\$\$)
Japanese, Sushi
2707 Broadway
212 749-5008

SAMAD'S GOURMET (\$)
Specialty Food
2867 Broadway
212 749-7555

SILVER MOON BAKERY
2740 Broadway
212 866-4717
SHAKE SHACK (\$)
2957 Broadway
646 383-5506

STARBUCKS (\$)
2929 Broadway
212 932-0300

SYMPOSIUM (\$\$)
Underrated Greek tavern
544 West 113th St
212 865-1011

SWEETGREEN (\$\$)
Great salads
2937 Broadway
(917) 675-6616

TOAST (\$\$)
Great brunch, and burgers!
3157 Broadway
212 662-1144

TOM'S RESTAURANT (\$\$)
Diners & Coffee Shops
2880 Broadway
212 864-613

Off-Campus Dining

Morningside Heights Neighbourhood
Amsterdam Dining Options

1020 Bar (\$)
1020 Amsterdam Ave
212 531-3468

AMITY HALL UPTOWN (\$\$)
American Sports Bar
982 Amsterdam Ave
646 930-2501

AMSTERDAM RESTAURANT (\$\$)
American (New), Tapas
1207 Amsterdam Ave
212 662-6330

APPLETREE SUPERMARKET (\$\$)
Grocery
1225 Amsterdam Ave
212 865-8840

AJANTA (\$\$)
Indian, Pakistani
1237 Amsterdam Ave
212 316-677

Gabriela's RESTAURANT (\$\$)
Mexican
688 Columbus Ave
212 961-9600

HAMILTON DELI (\$)
Delis, Sandwiches
1129 Amsterdam Ave
212 749-8924

HUNGARIAN PASTRY SHOP (\$)
1030 Amsterdam Ave
212 866-4230

INFAMOUS BISTRO (\$\$)
Italian, Burgers, Bistro
1012 Amsterdam
212 222-2-55

KITCHENETTE UPTOWN (\$\$)
American (Traditional)
1272 Amsterdam Ave
212 531-7600

LION'S HEAD TAVERN (\$)
Wings, Bar Food
995 Amsterdam Ave
212 866-1030

MARLOW BISTRO (\$\$\$)
Italian, Bistro
1018 Amsterdam
212 662-9020

MAX SOHA (\$\$)
Fantastic Italian food! Try the lasagna.
1262 Amsterdam Ave
212 531-2221

NIKKO (\$\$)
Asian Fusion, Sushi, Thai
1280 Amsterdam Ave
212 531-1188

OAXACA TAQUERÍA (\$)
Tacos, Burritos
1264 Amsterdam Ave
212 865-3880

PEACEFOOD CAFE (\$\$)
Vegan
460 Amsterdam Ave
212 362-2266

ROTI ROLL (\$)
Amazing Bombay Frankies
994 Amsterdam Avenue
New York, NY 10025-2231
212 666-1500

SARABETH'S WEST (\$\$)
American (Traditional), American (New)
423 Amsterdam Ave
212 496-6280

SLICE (\$)
Pizza, Italian
1215 Amsterdam Ave
212 864-7300

SPICE (\$\$)
Thai
975 Amsterdam Ave
212 864-4168

STROKOS PIZZA (\$)
Pizza, Delis, Chicken
1090 Amsterdam Ave
212 666-2121

SUBSCONSCIOUS (\$)
Sandwiches
1213 Amsterdam Ave
212 864-2720

TAQUERIA Y FONDA LA MEXICANA (\$)
Mexican
968 Amsterdam Ave
212 531-0383





Getting Around Town

New York City and beyond
transportation options

Renting a Car

Renting a car in Manhattan can be surprisingly expensive. Crossing the George Washington Bridge into Fort Lee might be a cheaper option, but if you are determined to get things done on the island:

- **Enterprise** (83rd between AMS and Columbus)
 - **New York Rent-A-Car** (Columbus at 107th)
(212) 799-1100
 - **Avis** (76th between AMS and B'way)
www.avis.com
 - **Budget** (76th between AMS and B'way)
www.budget.com
 - **Hertz** (77th between AMS and B'way)
www.hertz.com
 - **Zipcar** (1-866-4ZIPCAR)
www.zipcar.com
- ***Zipcar offers 24-hours self-service access to cars reserved by the hour through their website or over the phone. They have designated spots all around campus. Be sure to inquire about a Columbia discount!

Camping?

<http://blogs.cuit.columbia.edu/coop/rentals/>

It is a little known fact that, should you choose to go camping, you can rent gear through the university. They don't have everything, but you can rent the basics.

To the Airport

At some point during your time at the GSAPP, you will need to get away to a place that requires flying out of one of our local airports. Getting there can either be expensive (\$50 plus toll and tip to JFK, slight less (metered) to LGA, significantly more plus a \$15 surcharge to NWK), time-consuming (M60 to LGA, AirTrain from the Howard Beach stop on the A to JFK, AirTrain from the Newark Airport stop on NJT), or economical (approx. \$23 one-way on the Super Shuttle... 800 451-0455 for reservations). Plan ahead and allow extra time to get there - you never know what traffic or MTA delays you will run into.

Subway (MTA)

PAY-PER-RIDE METROCARD
Buy as many rides as you want:

Your first card costs \$1.00. Put \$6.50 or more on your card for a round trip.

7-DAY UNLIMITED RIDE METROCARD
Total Cost: \$33. Good for unlimited subway and local bus rides until midnight, 7 days from day of first use. This card is insured against loss when purchased at a vending machine with a credit or debit/ATM card.

30-DAY UNLIMITED RIDE METROCARD
Total Cost: \$127. Good for unlimited subway and local bus rides until midnight, 30 days from day of first use. This card is insured against loss when purchased at a vending machine with a credit or debit/ATM card.

REUSE YOUR CARD

The MTA charges a \$1.00 "new card fee" for the purchase of a new MetroCard. Try using OMNY - the new service using your smart phone.

Within weeks, you will have intimate knowledge of the 1 train and its limits. Other slightly slower modes of transportation include the M4 (occasionally a faster way to get to the east side), M104 (a slow but scenic way to get to Grand Central), M11 (the best way to get to Riverbank State Park), M5 (recommended only if you have a lot of time on your hands or want a more scenic bus ride), and the M60 (the cheapest way to get to La Guardia).

Parking

It is generally not recommended to drive to school. If you have to drive, however, and cannot find street parking (likely), the GMC Garage at 532 West 122nd (between Broadway and Amsterdam) is slightly cheaper than other local garages (of which there are many).

Getting Around Town

New York City and beyond
transportation options

A little further afield

MTA

The MTA sponsors a series of getaways that include round-trip fare and discounted admission to many interesting (and not so interesting) venues around the island and afar.

PATH GETAWAYS

Anyone from Jersey will tell you that the PATH train and the Garden State in general are underrated. Of course, the PATH is more useful for getting into the city, but there are nice restaurants and cheaper real estate in Hoboken, a decent and significantly cheaper orchestra in Newark, and fast connection at Pavonia/Newport to a really great science museum. It's \$4.50 round-trip, and Jersey really isn't that bad...

BY BUS

There are tons of buses that run at all hours of the day and night. Here are a few popular bus lines: Bolt, Megabus, Greyhound, Go, Dc2NY, Tripper, VaMoose, Hola, Apex, LuckyStar, and Yo! bus.

METRO-NORTH GETAWAYS

Take the M60 to 125th and Park to get to the NY Botanical Garden, the Culinary Institute of America, or to visit friends at Yale.

AMTRAK

Amtrak can be a pricey, but let's face it - sometimes it is worth it for that extra leg room.

Student Travel Agency

STA used to be the cheapest way for students (loosely defined) to see the world. This is no longer always the case, but they are still worth checking out. You can do almost anything on their website (www.statravel.com), but they also have a physical location (with fares to popular locations posted in the storefront if you are just browsing) at 2871 Broadway (@ 113th).

Bike

CITIBIKE

New York City's newest public transportation system, Citi Bike, launched in May 2013. The bike share system doesn't use any taxpayer money, and is even expected to create income for the city. The durable Citi Bikes and docking stations provide convenient and inexpensive mobility twenty-four hours a day, 365 days a year.

NYC BICYCLE MAPS

<http://www.nyc.gov/html/dot/html/bicyclists/bikemaps.shtml>

The New York City Bike Map is an annual free publication of DOT. Over 375,000 will be distributed this year from bicycle shops, libraries, and schools. You can also order your free copy by calling 311.

BIKING NEAR CAMPUS

The west side is a good place to bike and you can get to parts upstate that feel like another country altogether fairly quickly. If, for some reason, you live in Brooklyn or Queens, the ride in is pleasant as long as you start before 8AM. Just remember that the school is located at the point where Manhattan starts to creep upward toward its highest point. It can be a sweaty ride in good weather, so be prepared to use the facilities in Dodge.

Yellow/Green Taxi Cabs

The etiquette of hailing a cab is obvious, particularly if you are headed downtown. Do not be surprised if young, overdressed undergrads smoothly place themselves slightly downtown from where you are standing to beat you to a cab.

You can also use Uber, Lyft, and Via but they recently have become much more expensive.

Out on the Town

New York City and beyond
transportation options

We don't go out much. Neither will you. If you find yourself with time on your hands, however, we would recommend the obvious (Time Out New York) as a clearinghouse of events and venues or the numerous blogs that will direct you toward overpopulated parties in not-so-secret places. You will find them. Have fun.

Recreation

PARKS

It should be obvious upon arrival where Central Park is. Other recommended opportunities to experience a bit of nature on the island include Hudson River Park to the south (for a scene) and Fort Tryon to the north (for a bit of topography).

PROFESSIONAL SPORTS

As for professional sports... architects seem to universally appreciate sports in one way or another. For the week of registration (the week before classes), and into the first week of classes the US Open is highly recommended, if overpriced (try a night session). Queens is surprisingly close once you get to midtown. See the Rangers or Knicks only if someone gives you free tickets. If baseball is your thing (or you think it might be), the Yankees are always good, and the Mets are always easy to root for. Don't forget the Brooklyn Nets.

A COUPLE OF OTHER IDEAS

Met in the Parks is a late summer tradition with free travelling performances of the Metropolitan Opera in the five boroughs and New Jersey. Bring bug spray, a blanket, and a picnic. Alcohol is generally tolerated at both this and the NY Philharmonic in Concerts in the Parks (mid-summer). The Bryant Park summer film festival and Shakespeare in the Park are two other great summer traditions, but they involve a much greater time commitment as far as getting a seat or ticket.

MORE MUSIC (CLASSICAL)

Many esteemed venues (New York Philharmonic, Metropolitan Opera, etc.) for classical music have student rush tickets at very cheap prices just before the show. Additionally, there are \$25 tickets available for New York City Opera performances through their Opera for All program and \$35 tickets for the NY Philharmonic for people under 35 through their MyPhil program.

RESTAURANT WEEK

Twice a year (and typically for much longer than a week) some of the best restaurants in New York City participate in restaurant week, during which you can eat at otherwise prohibitively expensive restaurants for a prix-fixe lunch or dinner. The schedule is a bit spotty, so start looking early. Understandably, reservations at the most coveted venues go very quickly. Outside of restaurant week, there are other fancy places with surprisingly affordable deals for lunch and dinner.

NY ART BOOK FAIR

This happens in September at MOMA PS1 in Long Island City. Besides the exhibits at PS1, this is possibly one of the most anticipated events. The entire courtyard and museum gets filled with independent book publications. Join the thousands of creatives in celebrating zines, journals, prints, totes, and more.

MOMA PS1 WARM UP

Every summer, the MOMA PS1 courtyard becomes the music venue for various invited artists and DJs. Celebrating under a yearly installation by young architects, the Warm Up series makes for the perfect combination of design, music, and dancing.

Museums and Galleries

For more information:

<https://artsinitiative.columbia.edu/>

Passport to NY

To gain FREE admission to the following museums, just show your CUID with a validation sticker for the current semester (visit the ID Center in Kent Hall to get one) at the admissions desk of any museum listed below—no strings, no advance arrangements necessary.

**BRING YOUR
COLUMBIA ID!**

**CHECK IF IT'S FREE
BEFORE YOU
BUY ADMISSION
TICKETS.**

AMERICAN FOLK ART MUSEUM
2 Lincoln Square
212 595-9533
www.folkartmuseum.org

AMERICAN NUMISMATIC SOCIETY
75 Varick St
212 571-4470
www.wamnumsoc.org

ASIA SOCIETY
725 Park Avenue
@ 70th Street
212 288-6400
www.asiasociety.org

BRONX MUSEUM OF THE ARTS
1040 Grand Concourse
@ 165th Street
718 681-6000 (ext. 120)
www.bronxmuseum.org

**CARIBBEAN CULTURAL CENTER
AFRICAN DIASPORA INSTITUTE**
1825 Park Av. Suite 602
212 307-7420
www.caribecenter.org

THE CLOISTERS
Fort Tryon Park
212 923-3700
www.metmuseum.org

DAHESH MUSEUM
55 E 52nd St # 3
212 759-0606
www.daheshmuseum.org

EL MUSEO DEL BARRIO
1230 Fifth Avenue
@ 104th Street
212 831-7272
www.elmuseo.org

GOETHE-INSTITUT
72 Spring Street, 11th Floor
212 439-8700
<https://www.goethe.de/ins/us/de/sta/nev.html>

**INTERNATIONAL CENTER OF
PHOTOGRAPHY**
1133 Sixth Avenue
212 857-0000
www.icp.org

INTREPID SEA, AIR AND SPACE MUSEUM
Pier 86, 12th Avenue & 46th Street
212 245-0072
www.intrepidmuseum.org

MUSEUM FOR AFRICAN ART
Varies by exhibit, check website
718 784-7700
www.africanart.org

**MUSEUM OF CHINESE IN THE
AMERICAS**
215 Centre St
212 619-4785
www.moca-nyc.org

**MUSEUM OF THE CITY OF NEW
YORK**
1220 Fifth Avenue
@ 103rd St
212 534-1672
www.mcny.org

**MUSEUM OF JEWISH HERITAGE—
A LIVING MEMORIAL TO THE
HOLOCAUST**
39 Battery Park Place
646 437-4200
www.mjhnyc.org

MUSEUM OF MODERN ART (MoMA)
11 West 53 Street
212 708-9400
www.moma.org

MoMA PS1 (Queens)
22-25 Jackson Avenue
Long Island City, NY 11101
718 784-2084
www.ps1.org

METROPOLITAN MUSEUM OF ART
1000 Fifth Avenue
212 535-7710
www.metmuseum.org

THE MET BREUER
945 Madison Avenue
212 731-1675
<http://www.metmuseum.org/visit/met-breuer>

PALEY CENTER FOR MEDIA
25 West 52 Street
212 621-6800
www.paleycenter.org

NATIONAL ACADEMY MUSEUM
1083 Fifth Avenue
@ 90th Street
212 369-4880
www.nationalacademy.org
MUSEUM OF NATURAL HISTORY
79th Street + CPW
212 769-5100

NEUE GALERIE
1048 Fifth Avenue
212 628-6200
www.neuegalerie.org

NEW MUSEUM
235 Bowery
212 219-1222
www.newmuseum.org
NEW YORK CITY POLICE MUSEUM
100 Old Slip
212 480-3100
www.nycpolicemuseum.org

NEW YORK HISTORICAL SOCIETY
170 Central Park West
@ 77th St
212 873-3400
www.nyhistory.org

NICHOLAS ROERICH MUSEUM
319 West 107th Street
212 864-7752
www.roerich.org

**SCHOMBERG CENTER FOR
RESEARCH IN BLACK CULTURE**
515 Malcolm X Boulevard
212 491-2200
www.nypl.org/research/scsc.html

STUDIO MUSEUM IN HARLEM
144 West 125th Street
212 864-4500
www.studiomuseum.org

Passport to NY is brought you by the Provost's Office, Student Services and the Columbia Arts Initiative.

Other Venues

For more information:

<https://artsinitiative.columbia.edu/>

What else is there?

A number of sources publicize current happenings about town. The New York Times and Village Voice provide good coverage of local events and list and review events weekly. Not necessarily free, but definitely worth a visit.

ARTIST SPACE 38
38 Greene Street
212 226-3970
www.artistsspace.org

AUSTRIAN CULTURAL
FORUM
11 East 52nd Street

212 319-5300
www.acfn.org

BARBARA GLADSTONE
GALLERY
530 West 21st Street

212 206-7606
gladstonegallery.com

CENTER FOR
ARCHITECTURE
536 La Guardia Place
212 683-0023
www.centerforarchitecture.org

COOPER-HEWITT
MUSEUM
91st Street + 5th Avenue
212 879-8300
www.cooperhewitt.org

DIA ART FOUNDATION
535 22nd Street

212 989-5566
www.diaart.org

DRAWING CENTER
35 Wooster Street
212 219-2166
www.drawingcenter.org

GUGGENHEIM
MUSEUM
89th Street + 5th Avenue
212 423-3500
www.guggenheim.org

THE FRICK COLLECTION
(currently closed for renovation)
1 E 70th St
212-288-0700
www.frick.org

SKYSCRAPER MUSEUM
39 Battery Place
212 968-1961
www.skyscraper.org

STOREFRONT FOR ART AND
ARCHITECTURE
97 Kenmare Street
212 431-5795
storefrontnews.org

WHITNEY MUSEUM OF AMERICAN
ART
99 Gansevoort Street
212 570-3600
www.whitney.org

MOVIE THEATERS

(a subjective list)

Angelika Film Center
18 W. Houston Street
212 995-2570

Anthology Film Archive
32 2nd Avenue
212 505-5181

Film Forum
209 W. Houston St
212 727-8110

IFC Center
323 6th Avenue
212-924-7771

The Screening Room
54 Varick Street
212 334-2100

Sunshine Cinema
143 East Houston Street
212 330-8182

Walter Reade Theater
165 W. 65th Street
212 875-5600

HALF PRICE
TICKETS?

AT LERNER HALL, YOU
CAN PURCHASE MOVIE
VOUCHERS THAT WOULD
GET YOU INTO MOST MOVIE
THEATERS IN THE CITY FOR
ABOUT HALF THE PRICE,
IN ADDITION TO OPERAS
AND BROADWAY

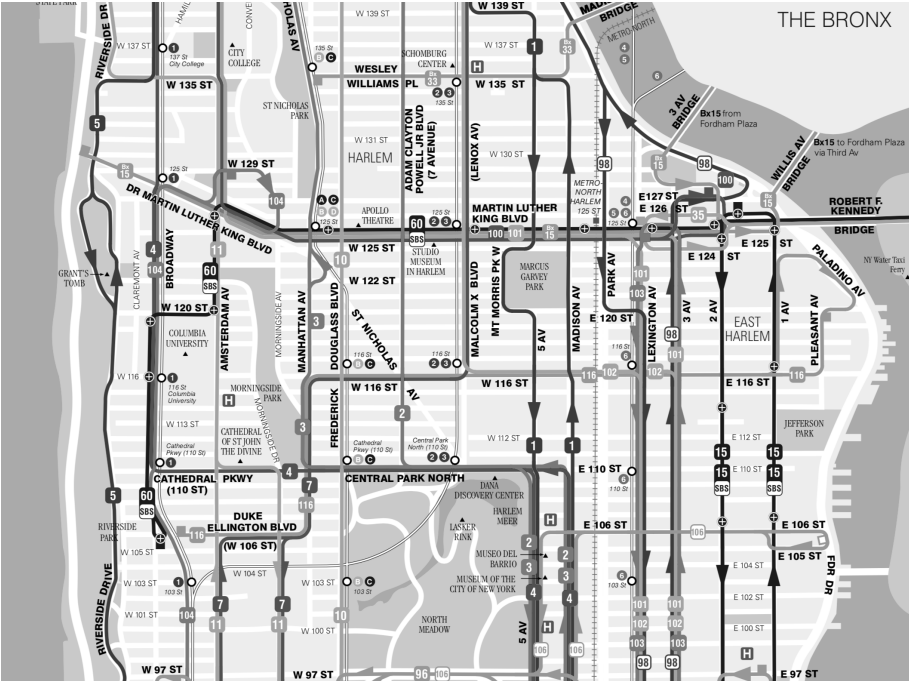
WEBSITES

(a even more subjective list)

www.craigslist.org
the ultimate apartment search engine!
www.listingsproject.com
low-key weekly e-newsletter of
apartment listings/sublets
www.seamless.com
food delivery
www.yelp.com
go-to source for ratings and reviews
www.nymag.com
search for their summer guide
www.newyork.citysearch.com
pretty much everything in New York
www.artcards.cc
gallery openings/art events
www.materialconnexion.com
all about materials
www.vanalen.org
architecture events around Manhattan
and many exhibitions
www.aiany.org
check out the Center for Architecture
www.terraser.com
aerial maps for free!
www.imdb.com
internet movie database
www.nypl.org
visit the New York Public Library
www.lincolncenter.org
want to get the concert schedule?
www.archinect.com
news... links... discussions...
competitions
www.architizer.com
architecture projects
www.villagevoice.com
village news
www.indymedia.org
independent news
www.pitchfork.com
check out the indie music scene
www.thekitchen.org
excellent art/performance space
www.boweryballroom.com
one of New York's best major concert
venues
www.thetranspecos.com/
legendary NYC promoter todd p's new
venue: hip, deep in brooklyn

Useful Transit Maps

For more information:
<https://new.mta.info/>

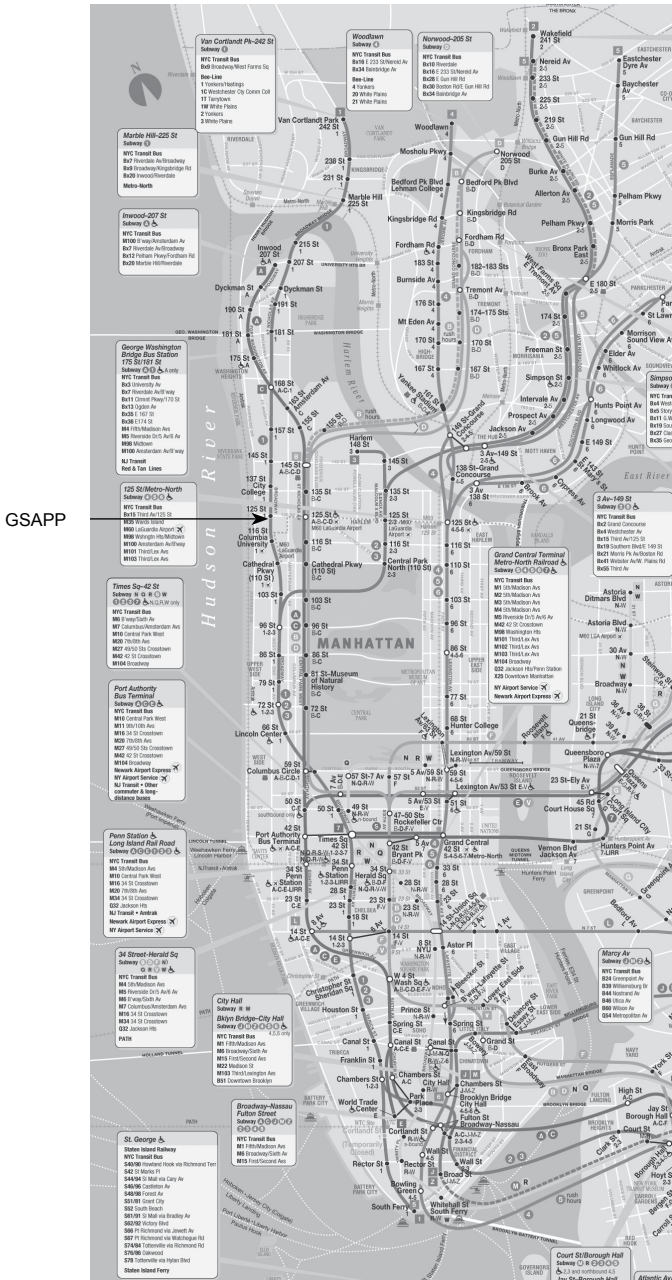


UPTOWN BUS SERVICE

Useful Transit Maps

For more information:

<https://new.mta.info/>



MANHATTAN SUBWAYS

The Green Book

This guide is a way to allow continuing students, faculty and staff to pass on information and advice about student life, school life and living in New York City.

This guide is by no means comprehensive—it serves as a supplement to the information available on the GSAPP website and any official information you receive about courses and registration from the GSAPP administration.

