

Y i h e n g L i n

GSAPP Studio Works
2019-2022

Contents

I. Guggenheim Anthology

Manhattan, NY | 2022

Adv.VI | Columbia University GSAPP

II. Dissolution of Limits in East Harlem

Manhattan, NY | 2021

Adv.V | Columbia University GSAPP

III. A Spiritual Portal - Museum of Ramapough Native Indian Arts

Millburn, NY | 2021

Adv.IV | Columbia University GSAPP

IV. Domesticity in the Age of Pandemic

Bronx, NY | 2020

Core III | Columbia University GSAPP

V. Renovation of the Former P.S 64


Manhattan, NY | 2020

Core II | Columbia University GSAPP

VI. Interface for Enclosed Schools

Manhattan, NY | 2019

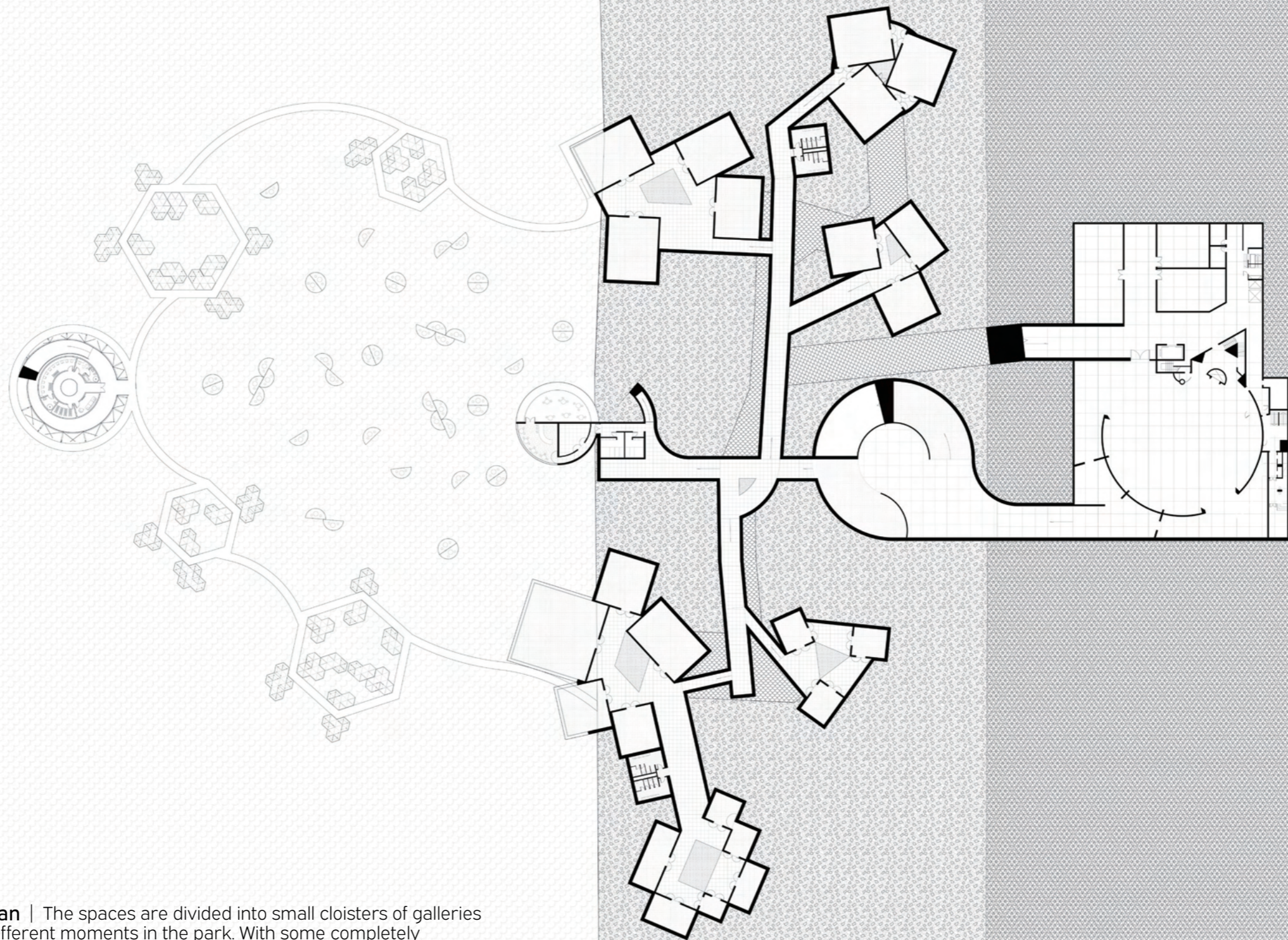
Core I | Columbia University GSAPP



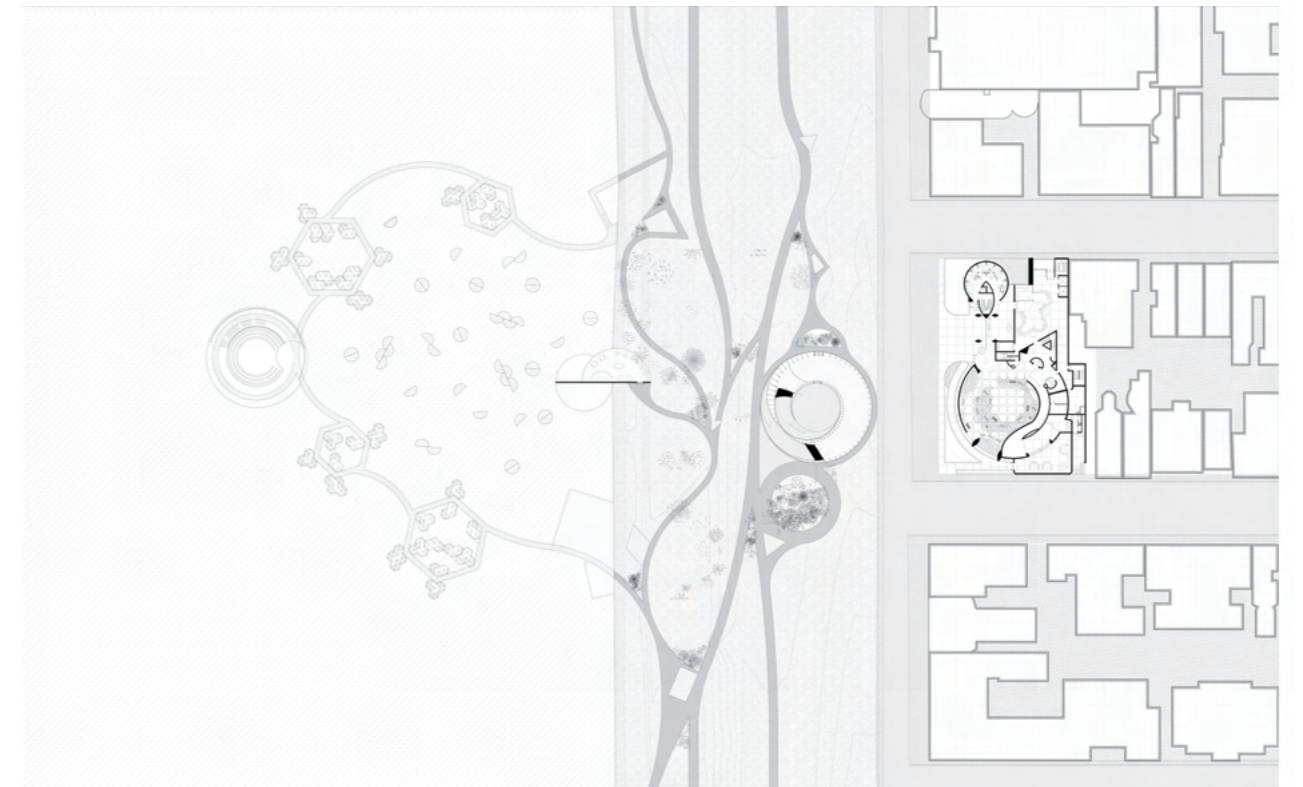
Guggenheim Anthology

Team Work
Advanced VI Studio at GSAPP
Instructor: Juan Herreros
Partner: Jonathan Liang, Wanting Sun
Site: Manhattan, New York

The project aims to deconstruct the monument and capital collection machine that is the Guggenheim Museum. Following its history of art, architectural, and asset collection; our proposal becomes an anthology of spaces, assembled like an archipelago formed by the deconstructed geometries of the old museum. Key money-making cogs in the Guggenheim machine - galleries, cafes, and restaurants - will be moved underneath central park and onto the jackie kennedy reservoir. Education spaces, a children's museum, curatorial labs, digital art galleries, and other amenities for the public will take over the leftover spaces, and the rotunda - the crown jewel of the building - becomes a large public space open to all sorts of activity. With this intervention, the Guggenheim will truly become a curatorial laboratory and dynamic cultural platform of the 21st century.



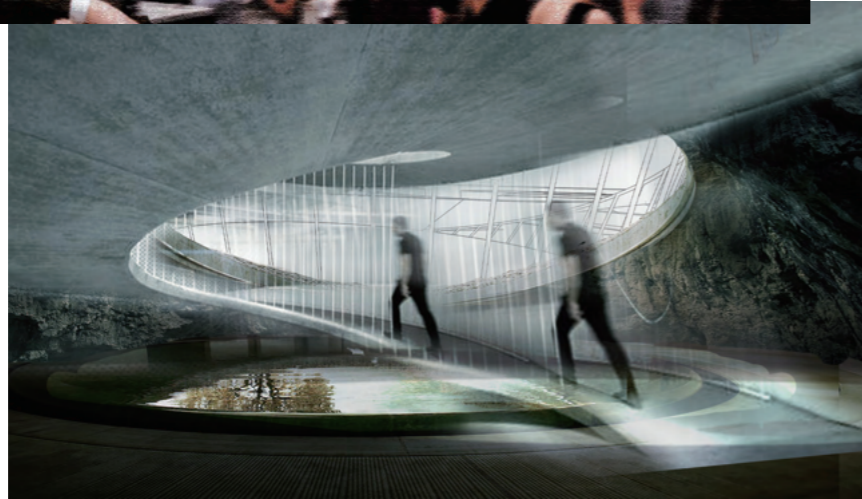
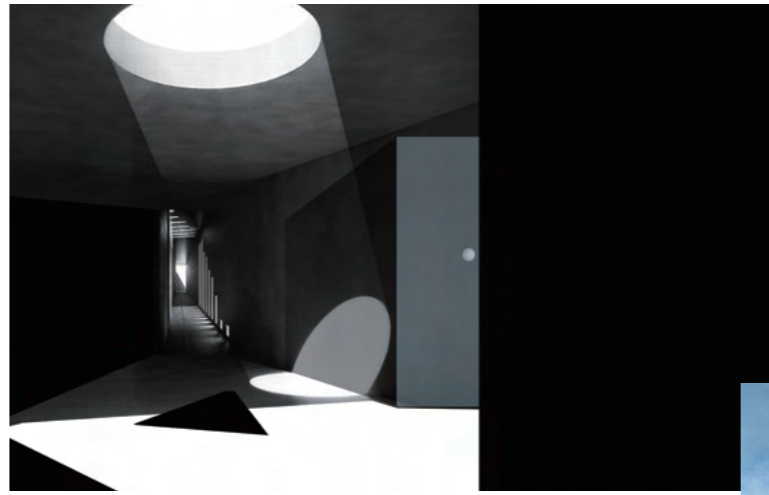
Basement Level Plan | The spaces are divided into small cloisters of galleries and placed around different moments in the park. With some completely submerged underground, and some providing underwater experiences. A central corridor connects all six cloisters. It brings back a classic Frank Lloyd Wright trope of compression and release. A tight corridor experience before the vast underground expanse of the cloister.



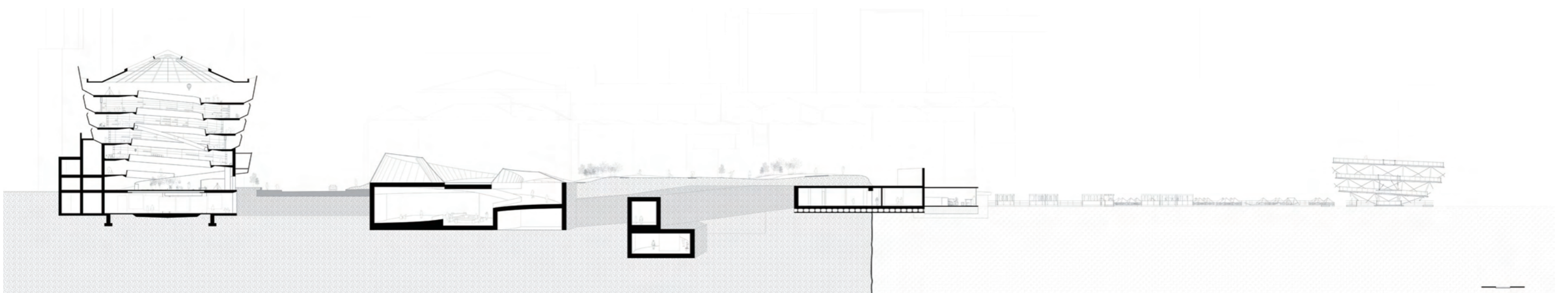
Park Level Plan | The geometry of the entrance and its spiral from the park level down to the gallery level provide New Yorkers an easy means of access to art as a part of their daily lives. The reservoir interventions go from a partially submerged restaurant and cafe, to light steel frame structures in the meditation spaces and performing center floating on the water. Each experience on the water comes with other small experiences as well. The restaurant and meditation pods have modules that can detach and float onto a small controlled body of water, allowing customers to drive their own experience.

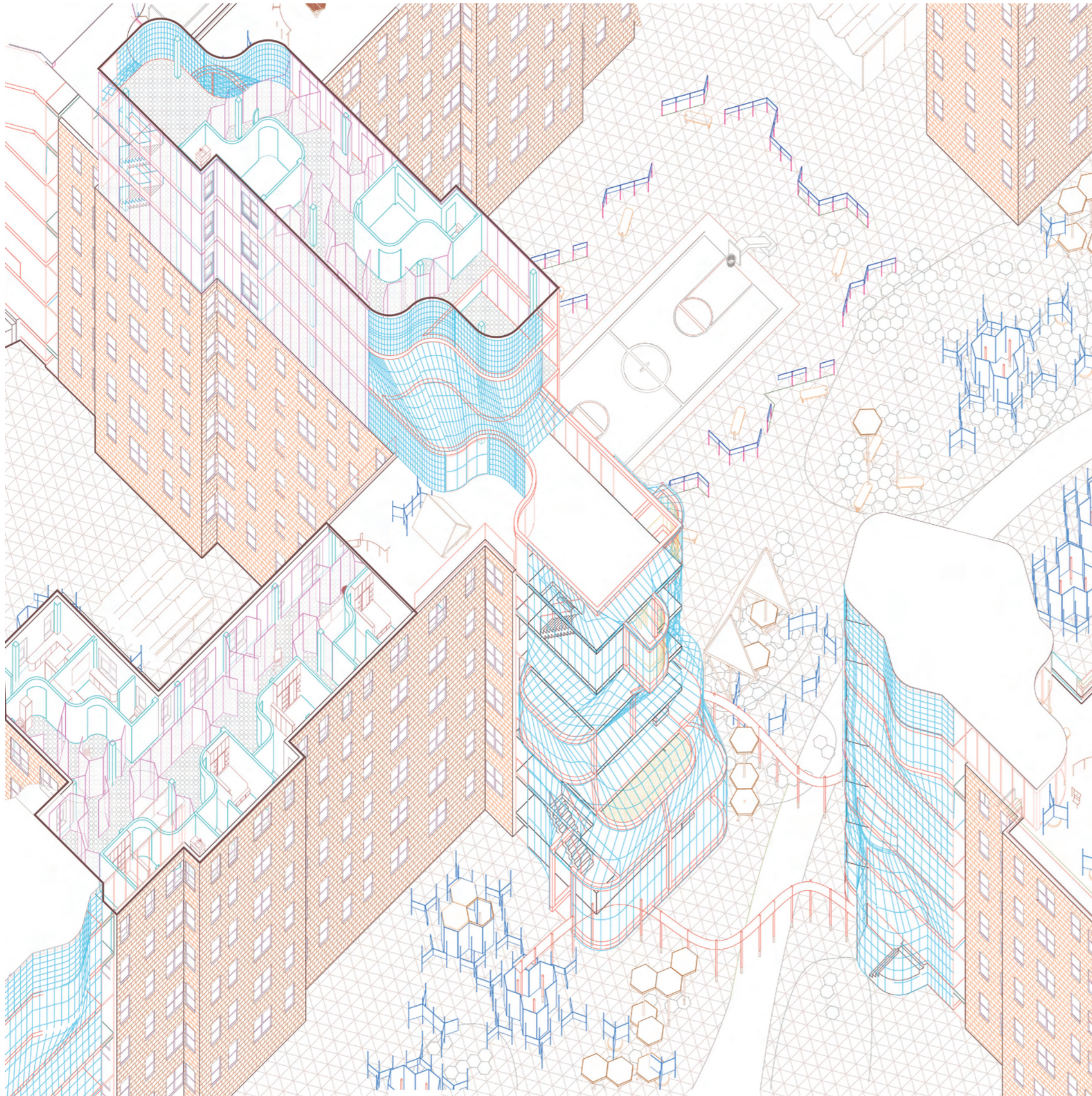


BOH Level Plan | Curators and artists are able to load material and art via wide 20 ft corridors and reach the gallery levels via a loading lift that takes the shape of the central courtyard.
4th Level Plan | The act of taking over the original building is done with wonky, customized furniture. Now, instead of being a machine for collection, it has become a laboratory for art conservation, education, and development.



The Guggenheim, instead of remaining a singular experience, transforms into a **collection of experiences**. Taking visitors through an emotional and educational journey through the monumental, the underground, the ephemeral, and the water. Pushing the limits of creativity, modern art, and curation.

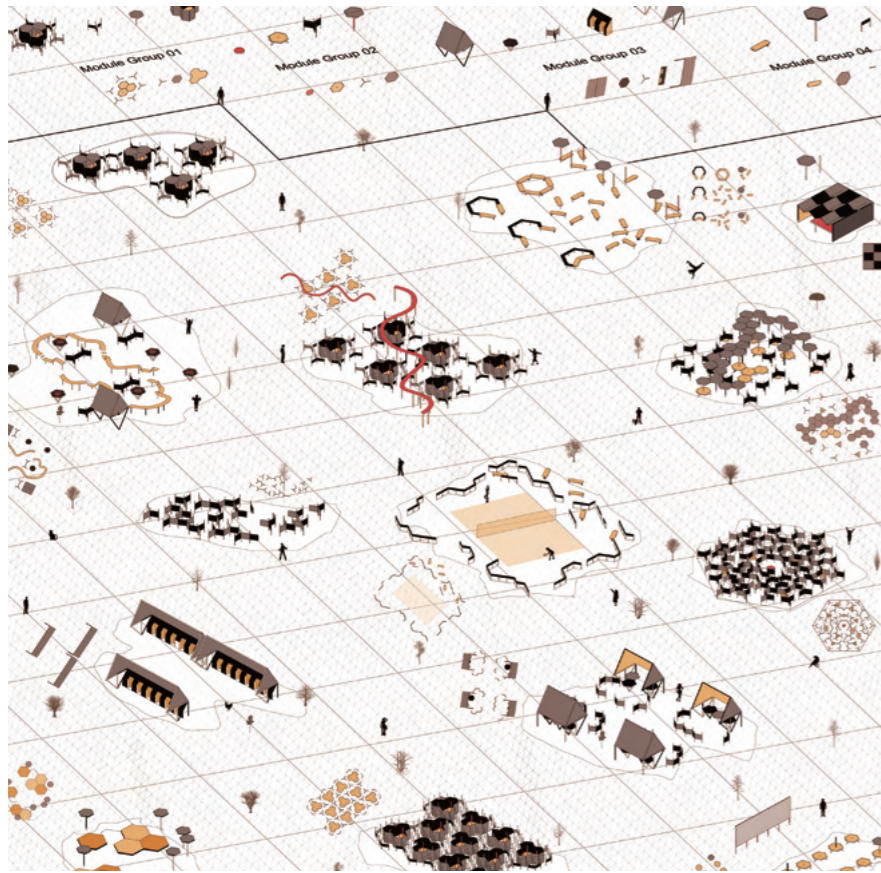




Dissolution of Limits in East Harlem

Team Work
Advanced V Studio at GSAPP
Instructor: Juan Herreros
Partner: Wanting Sun, Lichong Tong
Site: Manhattan, New York

The project is the typological Correction in the East River Housing. The tower in the park typology provides unpleasant, reclusive, and segregated experiences of living while disconnecting from the surrounding context with homogeneous architecture. The project aims to dissolve the boundaries between the domestic, neighborhood, and public realm with various activities that connect people and provide comfort at all scales. The new façades of the building were reconfigured into the new system of stairs not only as an expression of multiplicity but also as a tool for connecting people with similar interests. The ground levels were conquered and transformed by adding modules and patterns. Instead of living all the life behind the big wall, we want to integrate the weak and translucent through different scales and communicate with the climate, community, and outside environment.

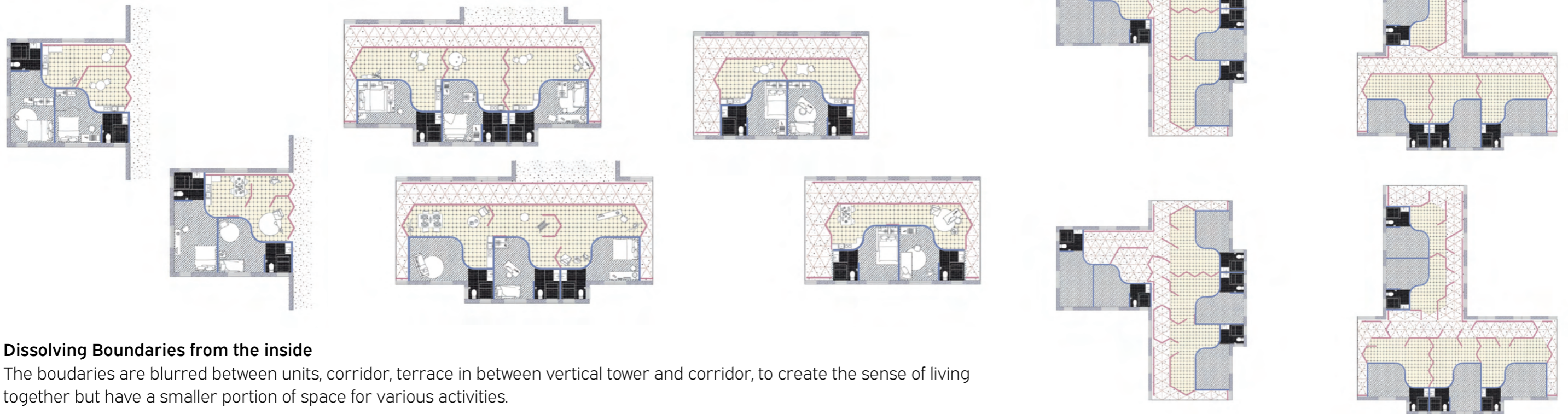


Dissolving Boundaries from the outside

Modules designed for the community are placed to promote better social relations. The ground also works as a horizontal extension of the vertical collective moments.

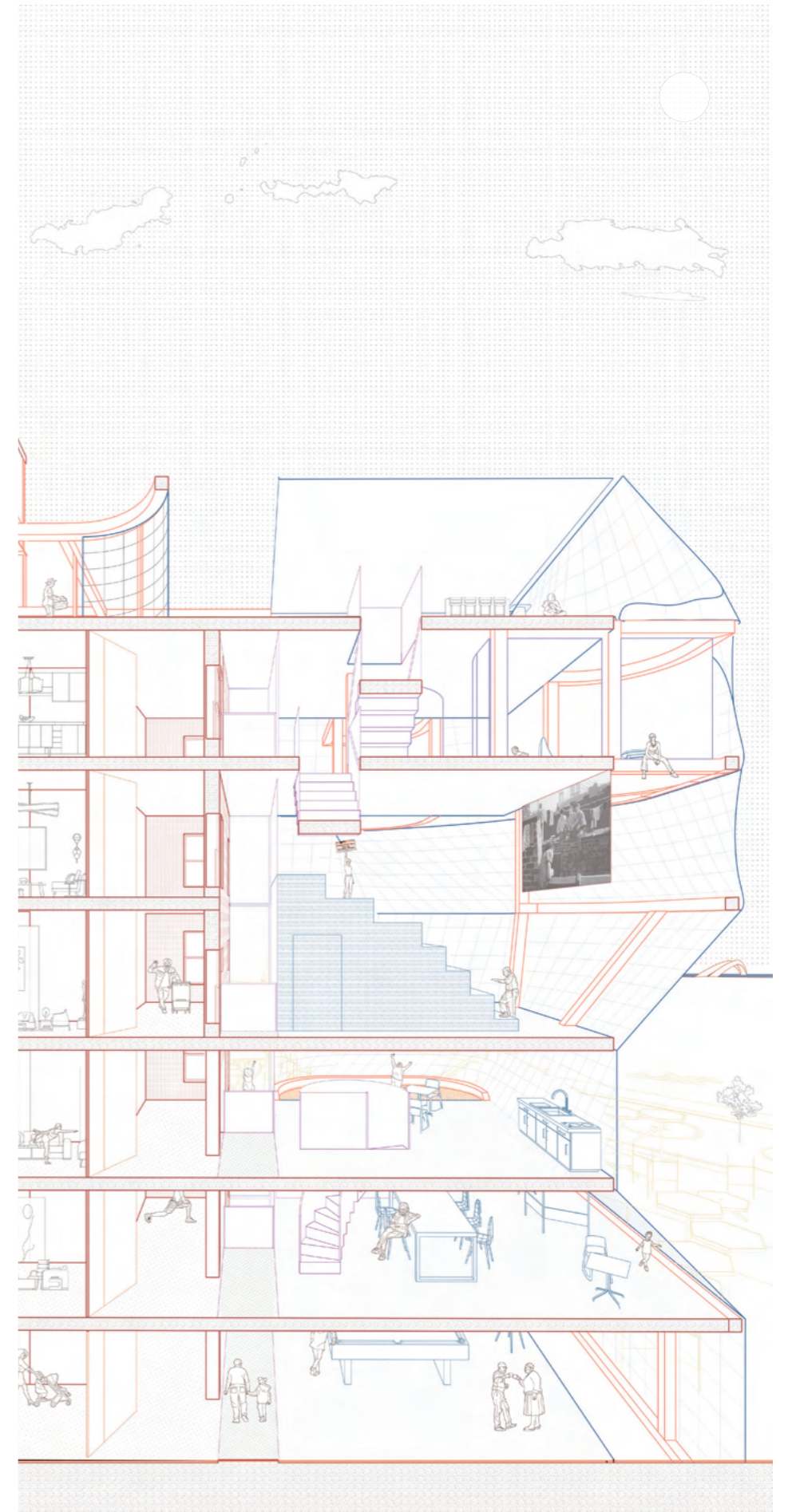
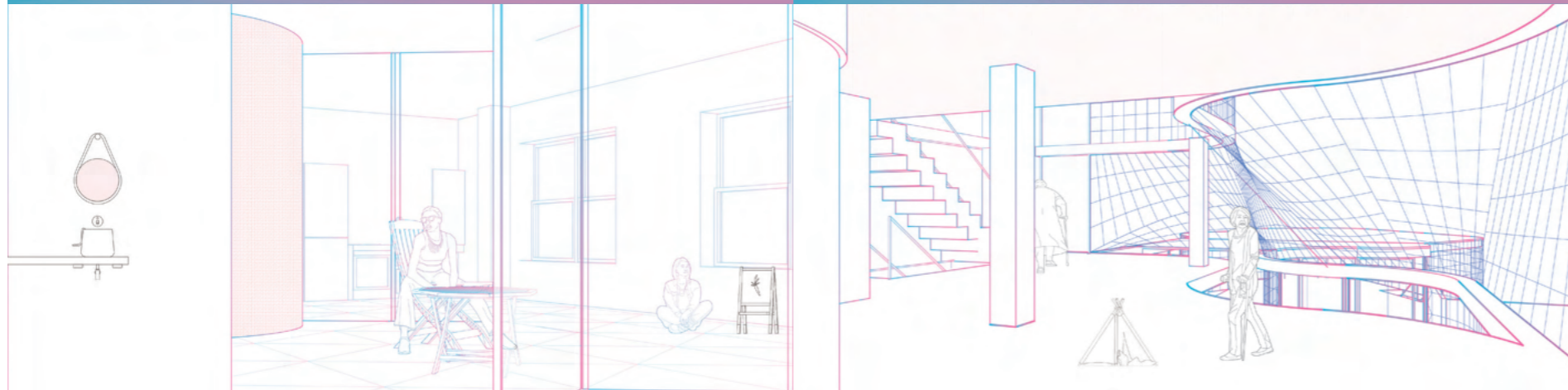
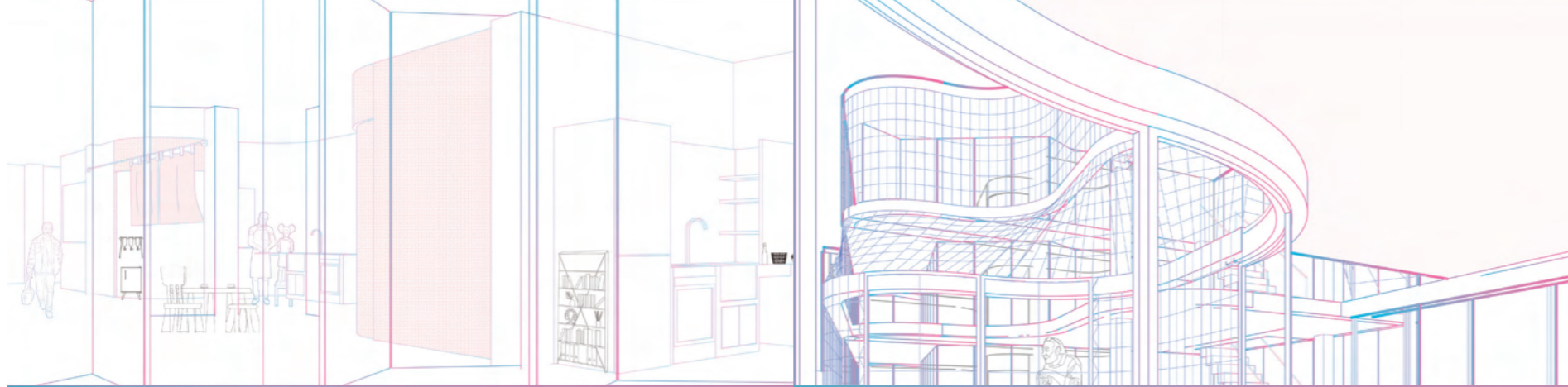
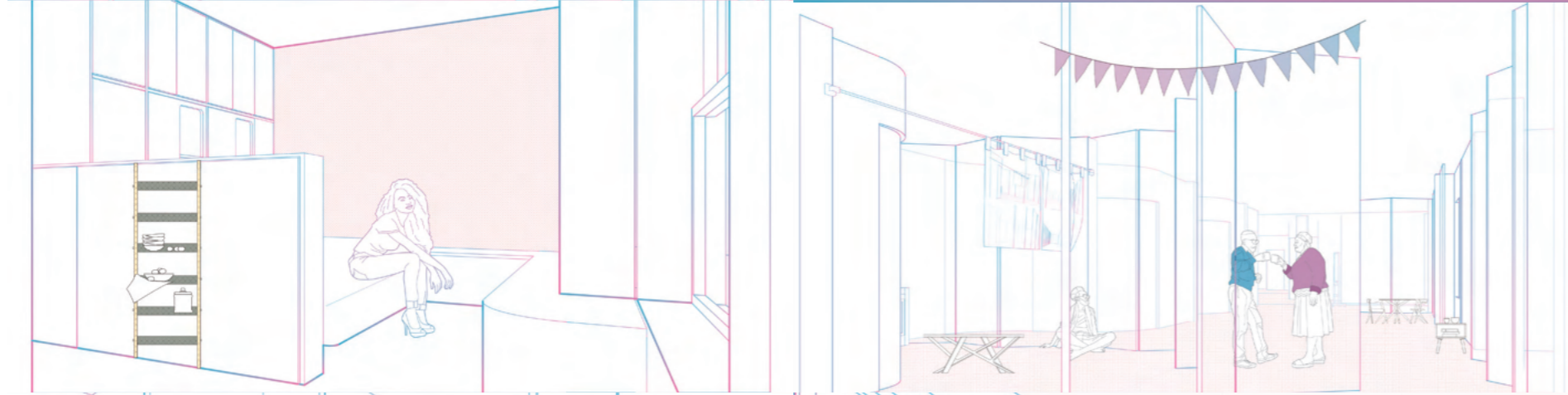
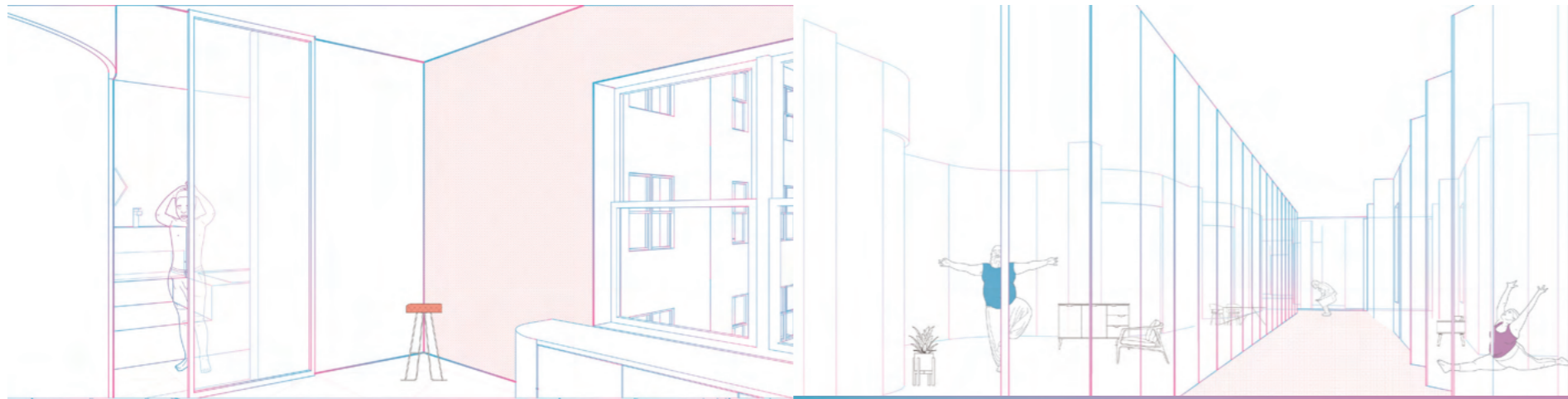
Dissolving Boundaries from the heavy boundaries of buildings

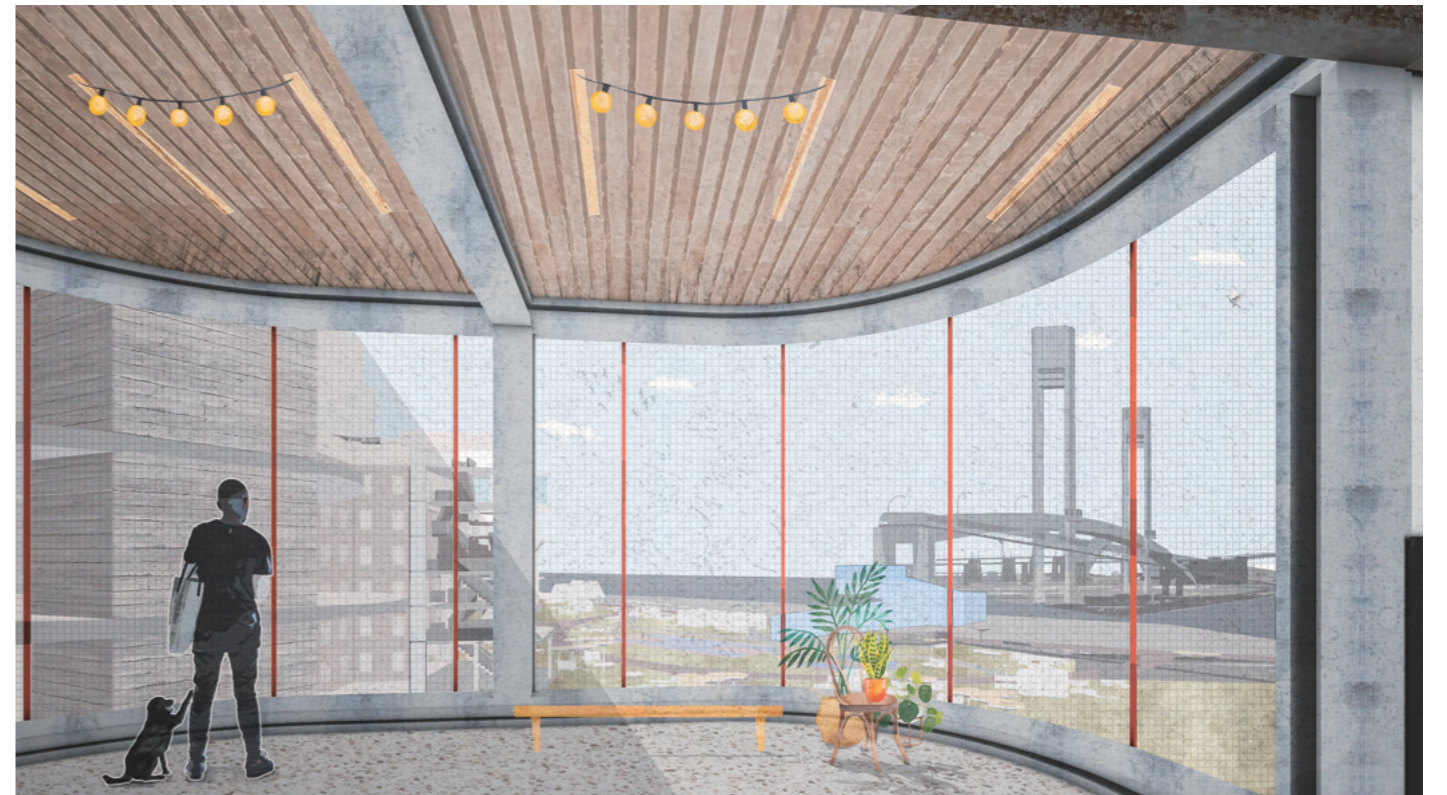
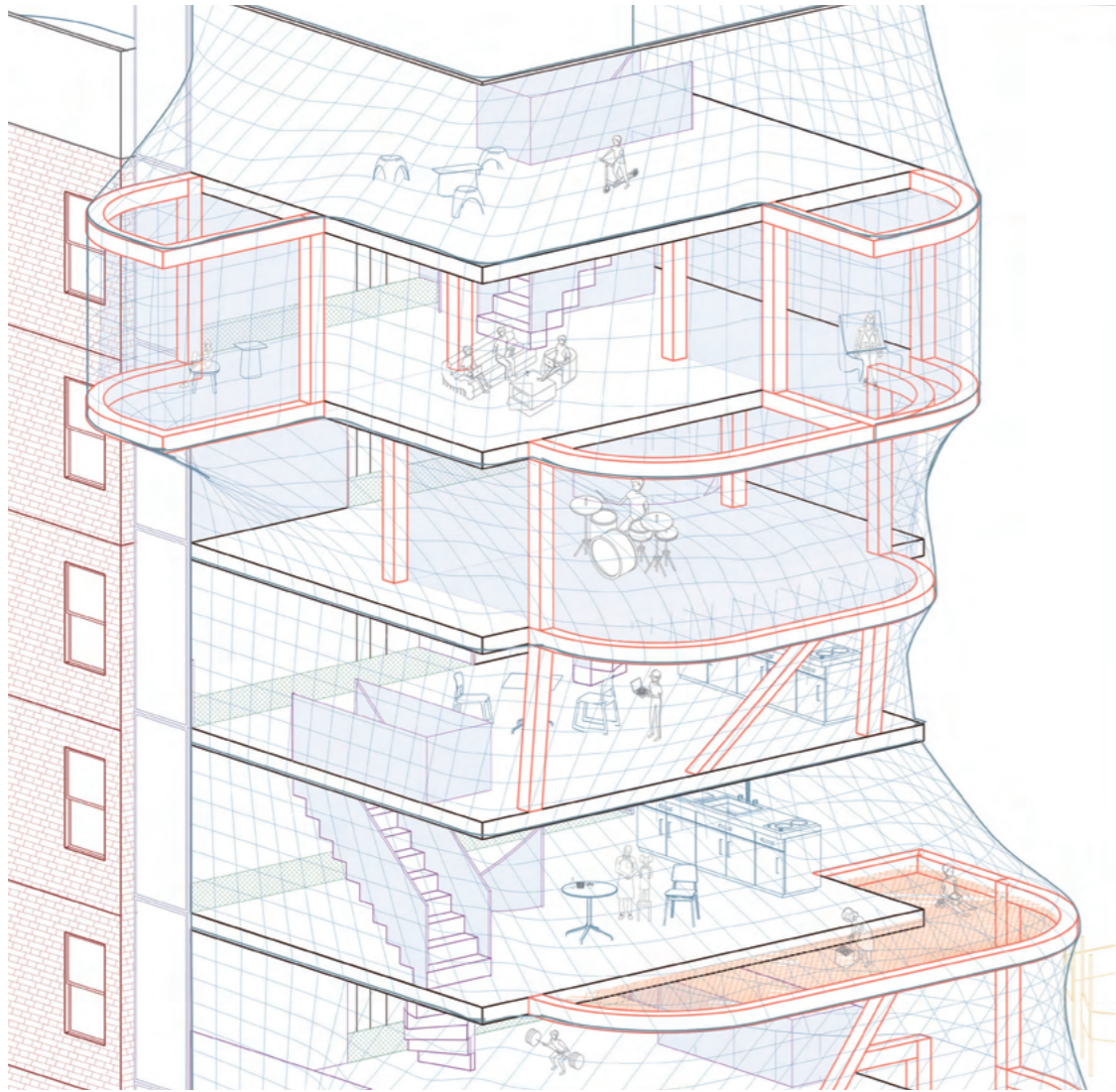
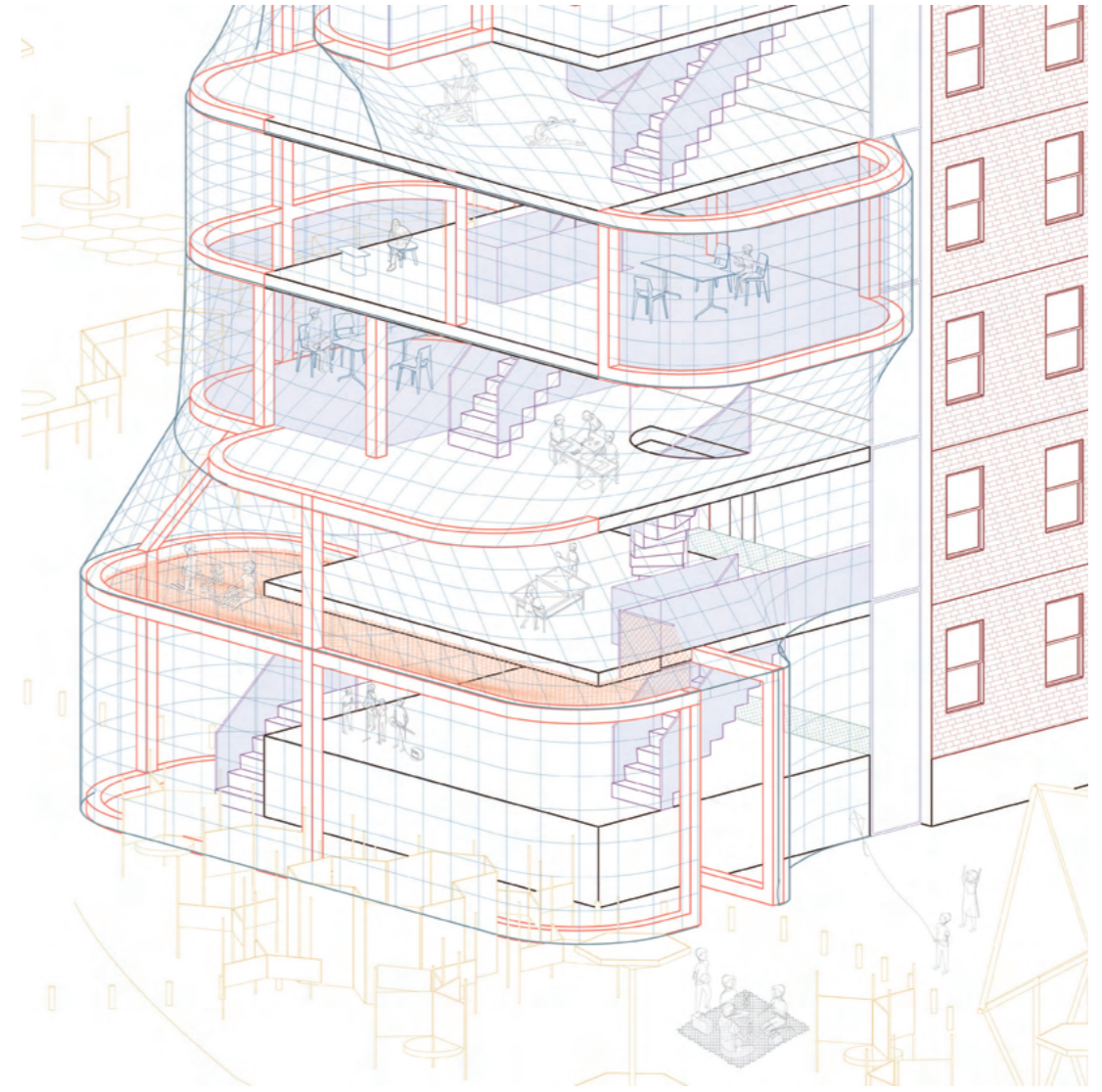
In contrast with the existing inflexible and completely defined space, the old circulation system was transformed into vertical towers with transitional moments.



Dissolving Boundaries from the inside

The boundaries are blurred between units, corridor, terrace in between vertical tower and corridor, to create the sense of living together but have a smaller portion of space for various activities.





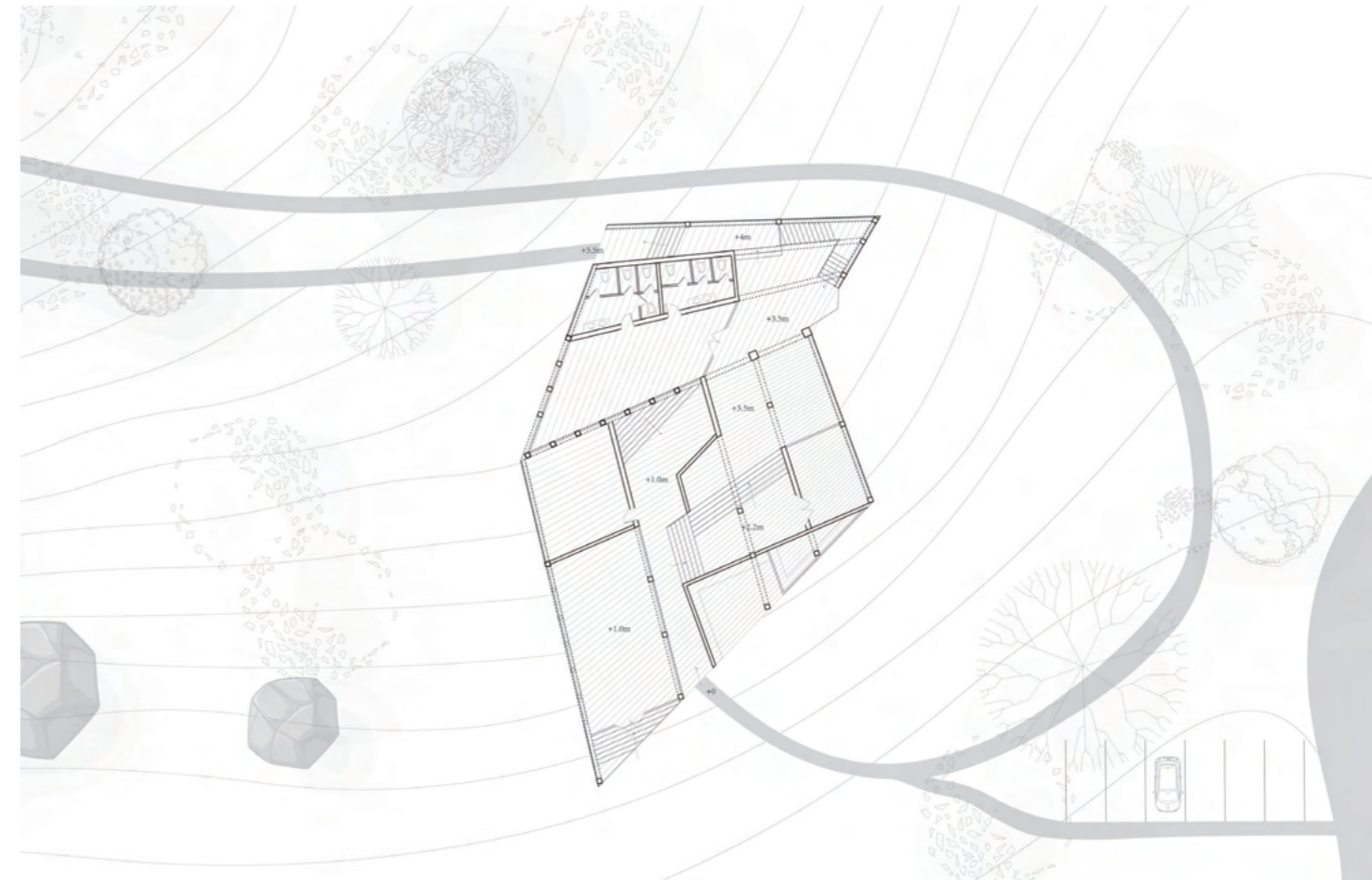
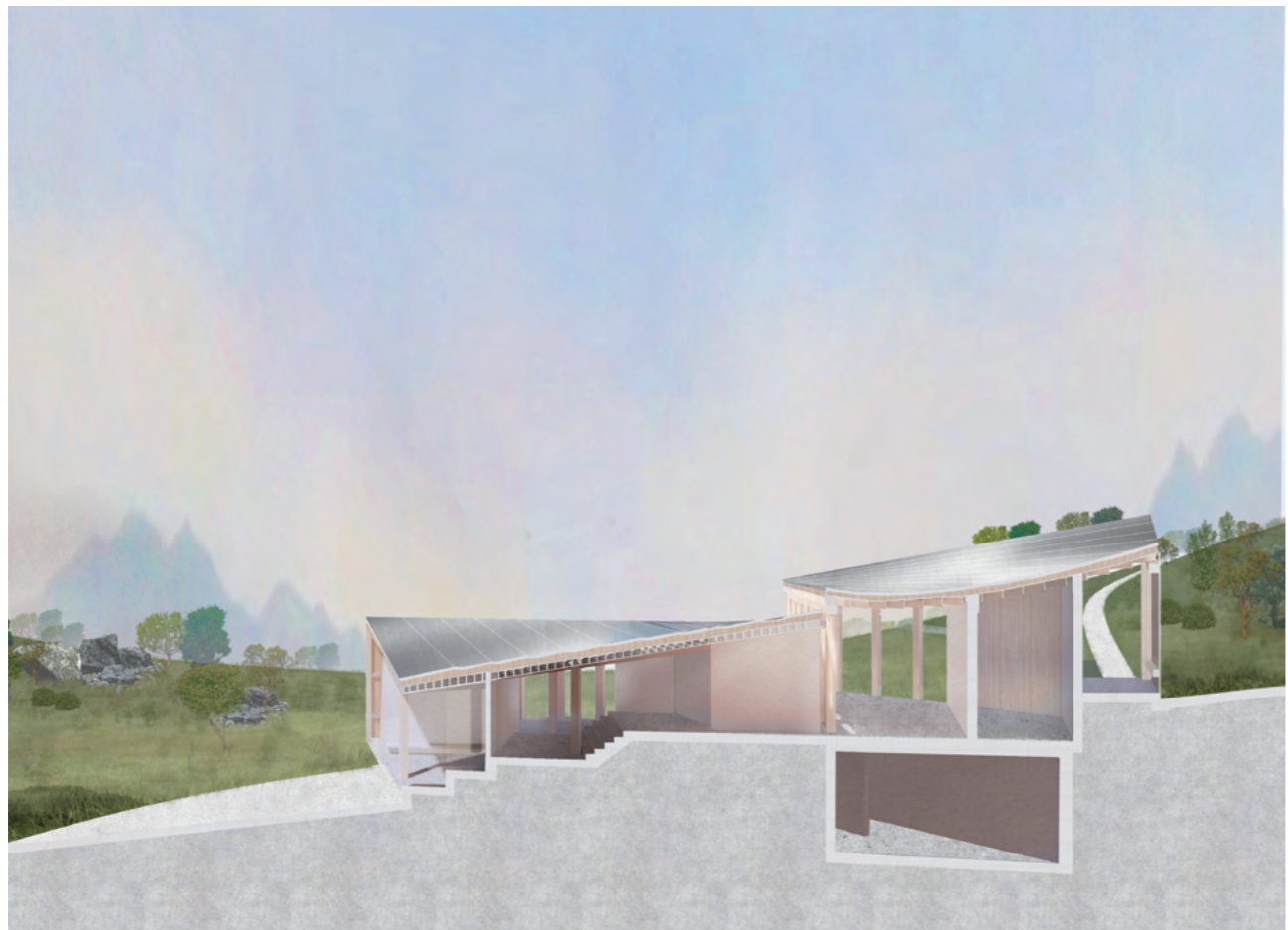
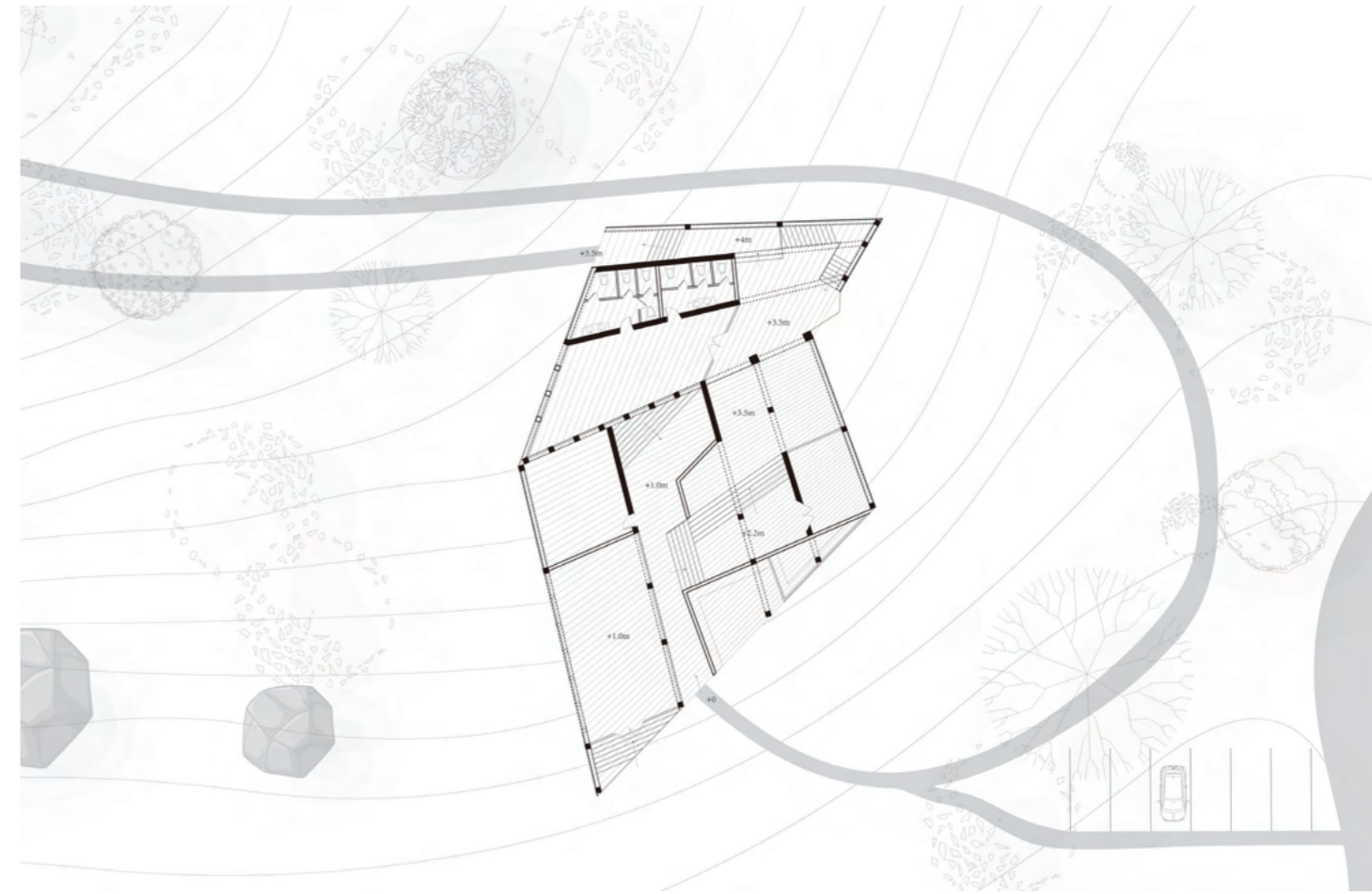
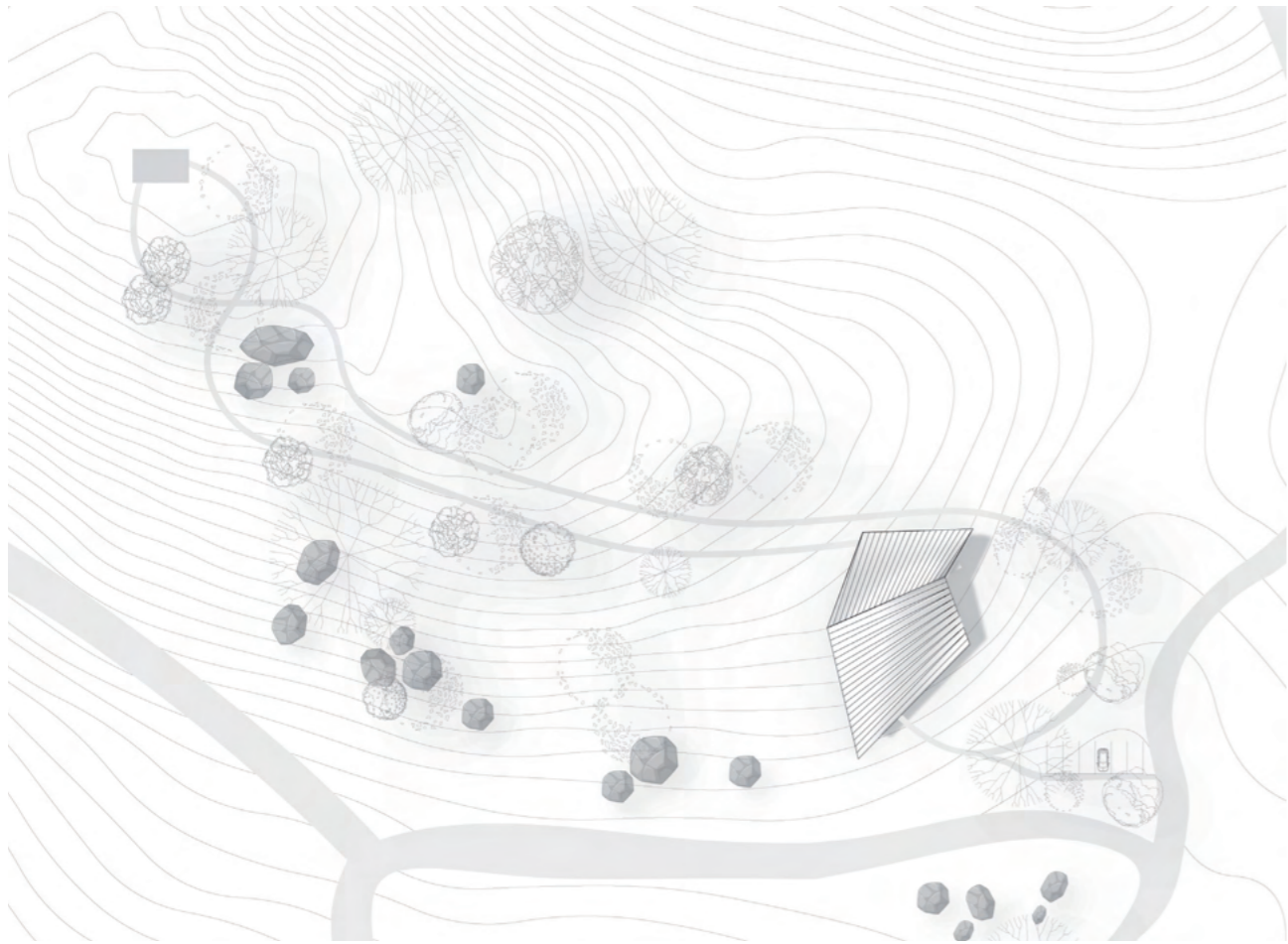


A Spiritual Portal

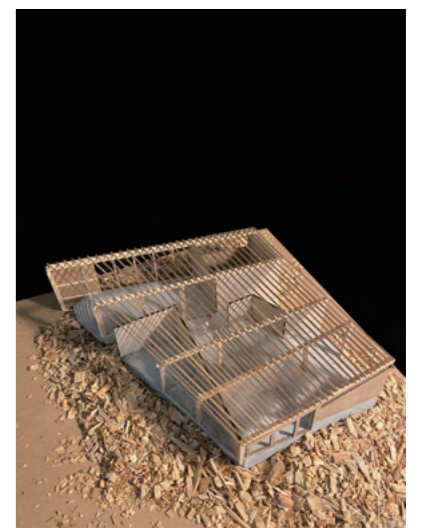
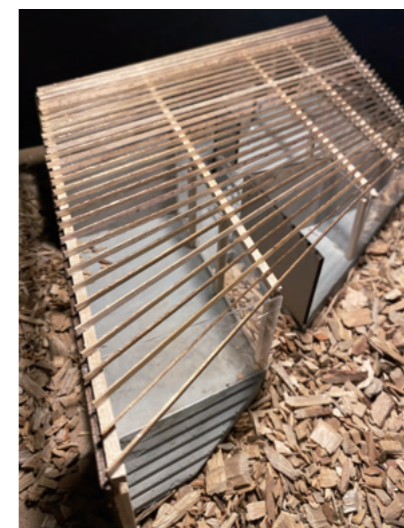
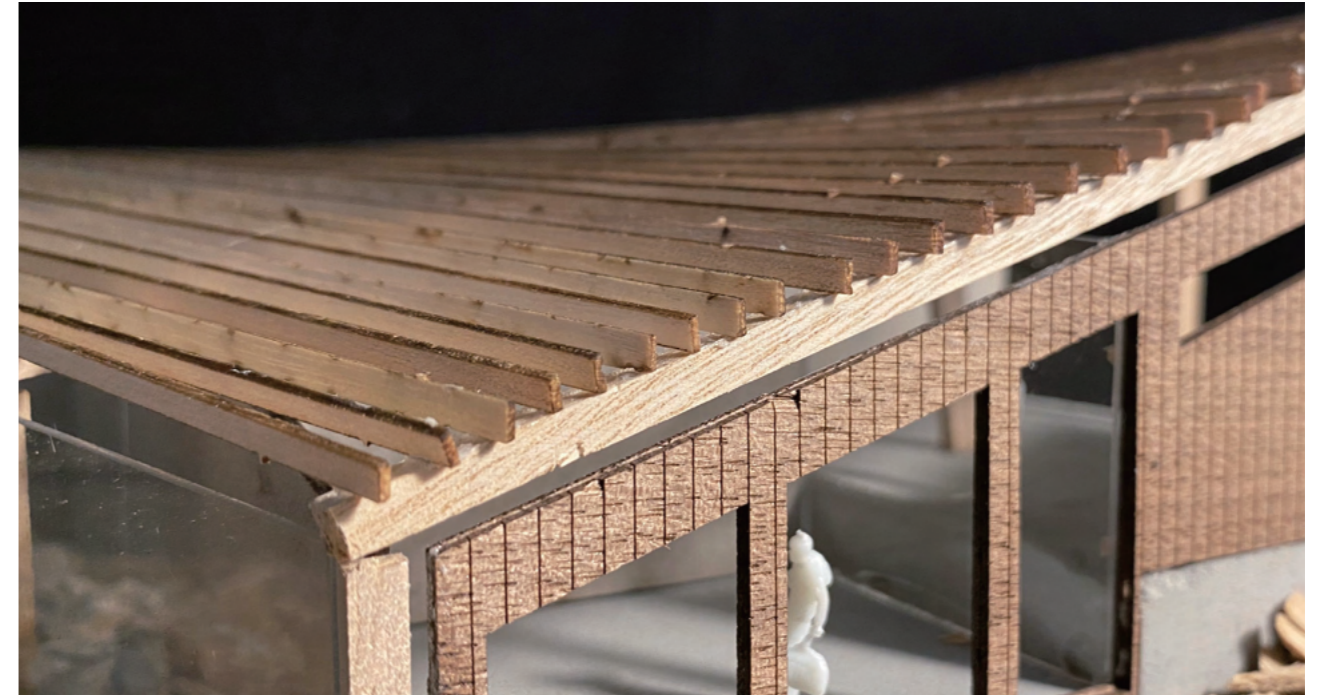
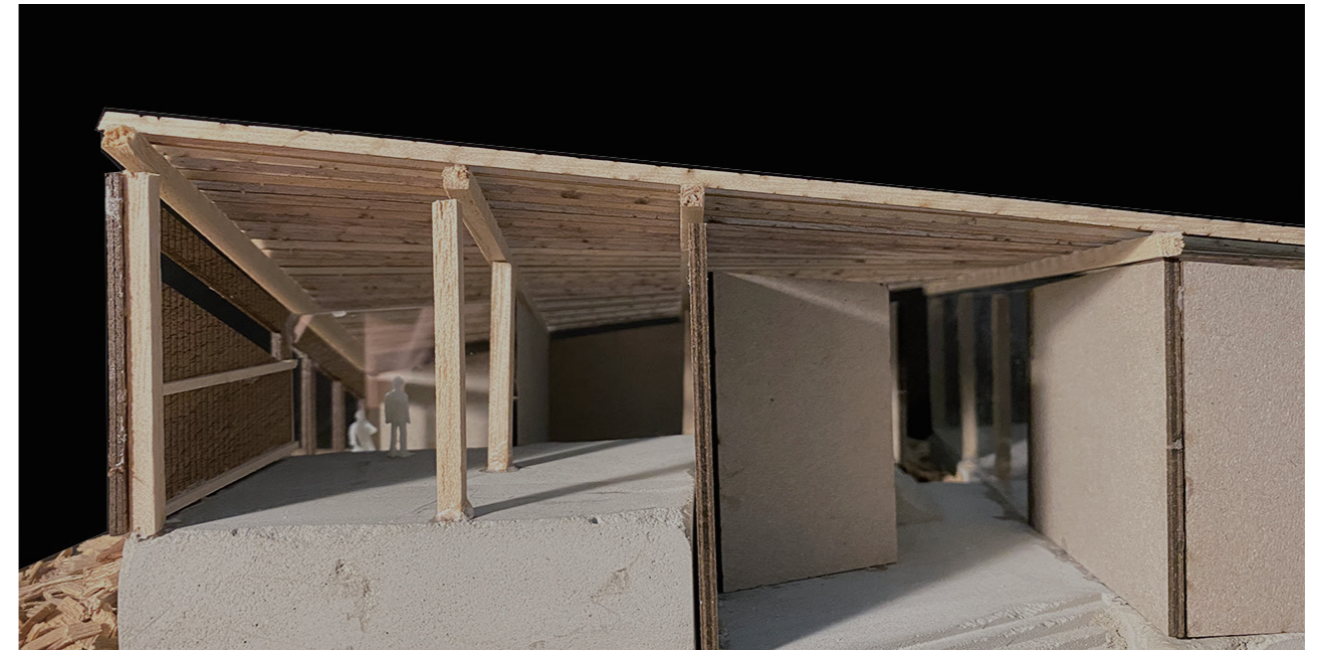
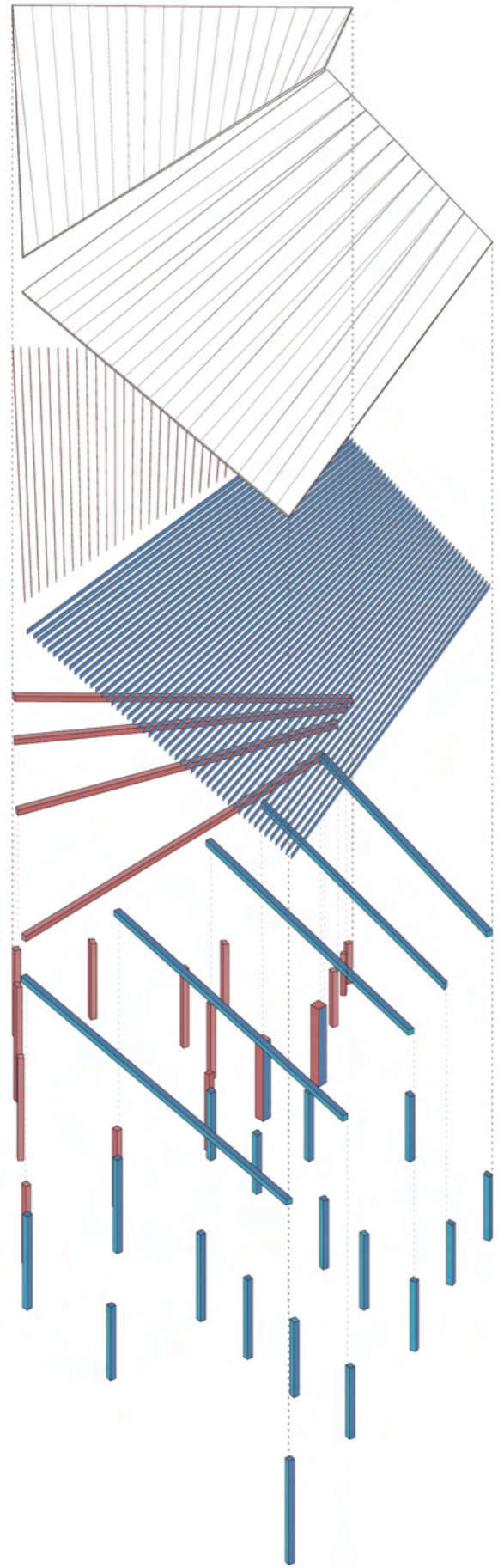
Museum of Ramapough Native Indian Arts

Individual
Advanced IV Studio at GSAPP
Instructor: Robert Marino
Site: Millburn, New York

The small museum proposing is adjacent to the sacred territory of Split Rock, a very rural, solid granite ridge near the town of Millburn, New York, for the Lenape Ramapough Tribe. The project is intended as a physical symbol of the tribe's presence, an entry point of transcendence, a gateway to the spirit world. With the idea embedded in Native American life that the Earth is the mind of the people, the museum is intended to be integrated into the landscape and direct people to the uphill naturally as they visit the museum and learn about the Lenape and Ramapo culture. It is also a multi-layer space that create spiritual experience for the visitors to know the Native American culture from different scope: the area display artifact is a place between, the space for tribes to host their events, the casual space for the visitors to stay, and the relatively flexible circulations that have multiple entrance but the exit eventually leads uphill - to the spiritual land.





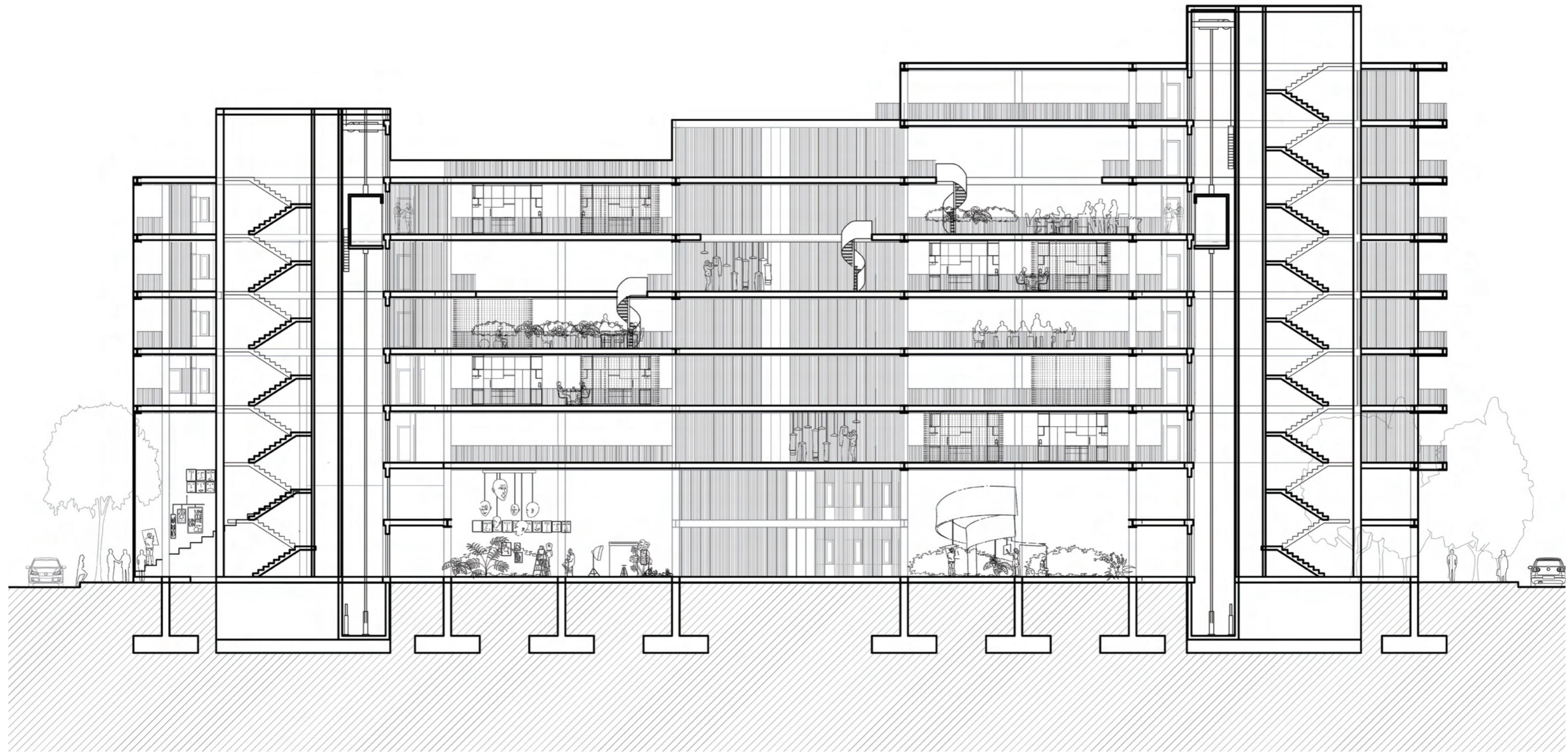


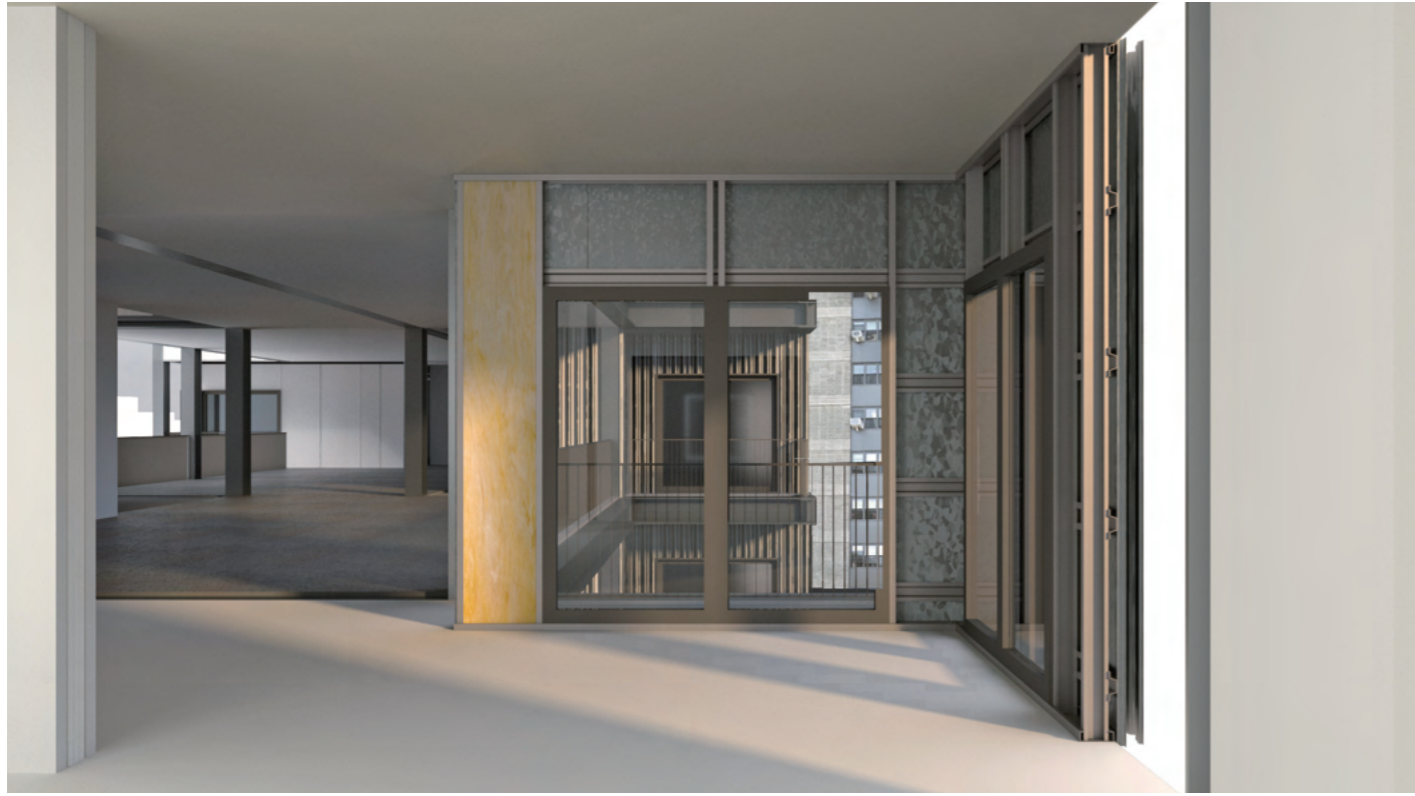


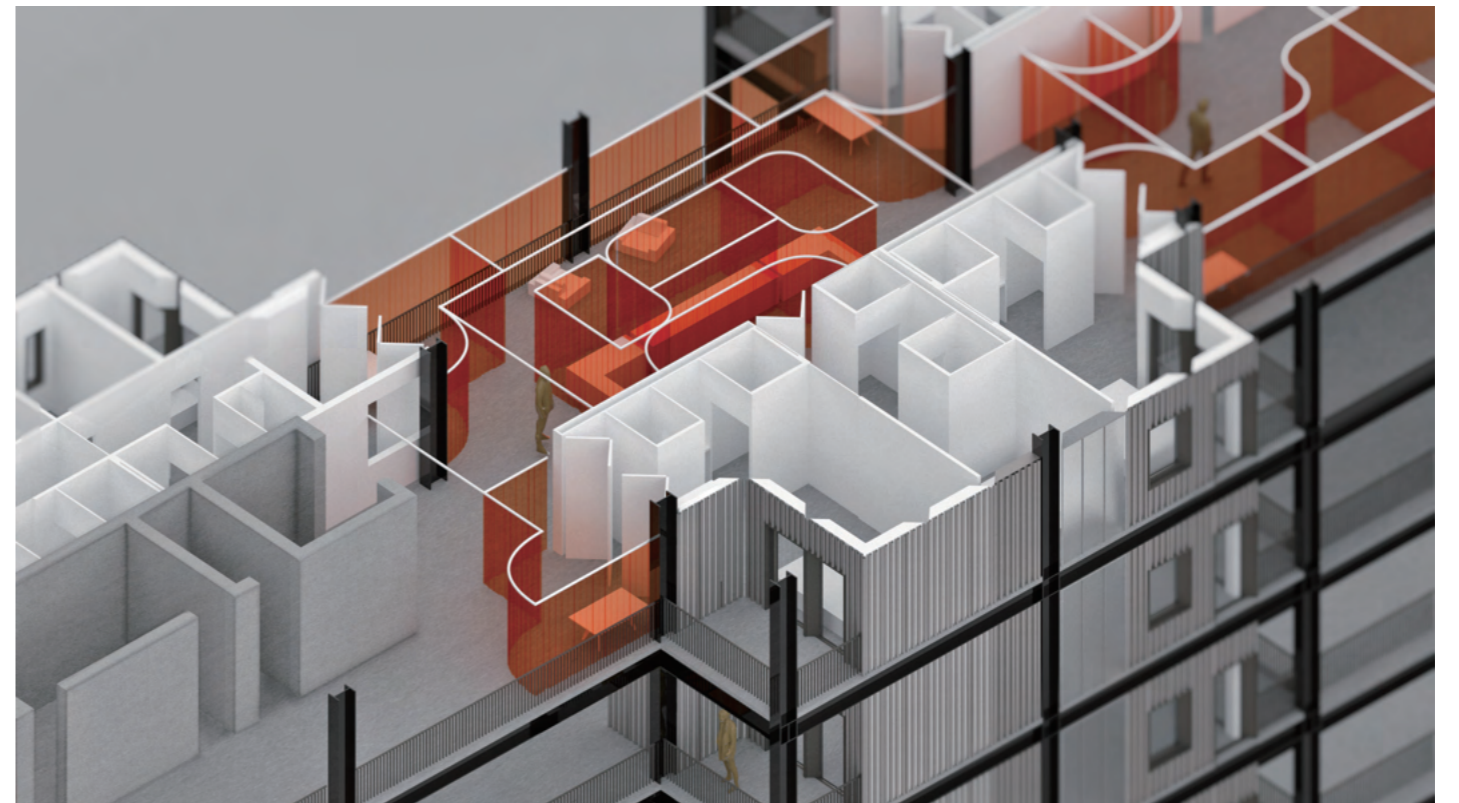
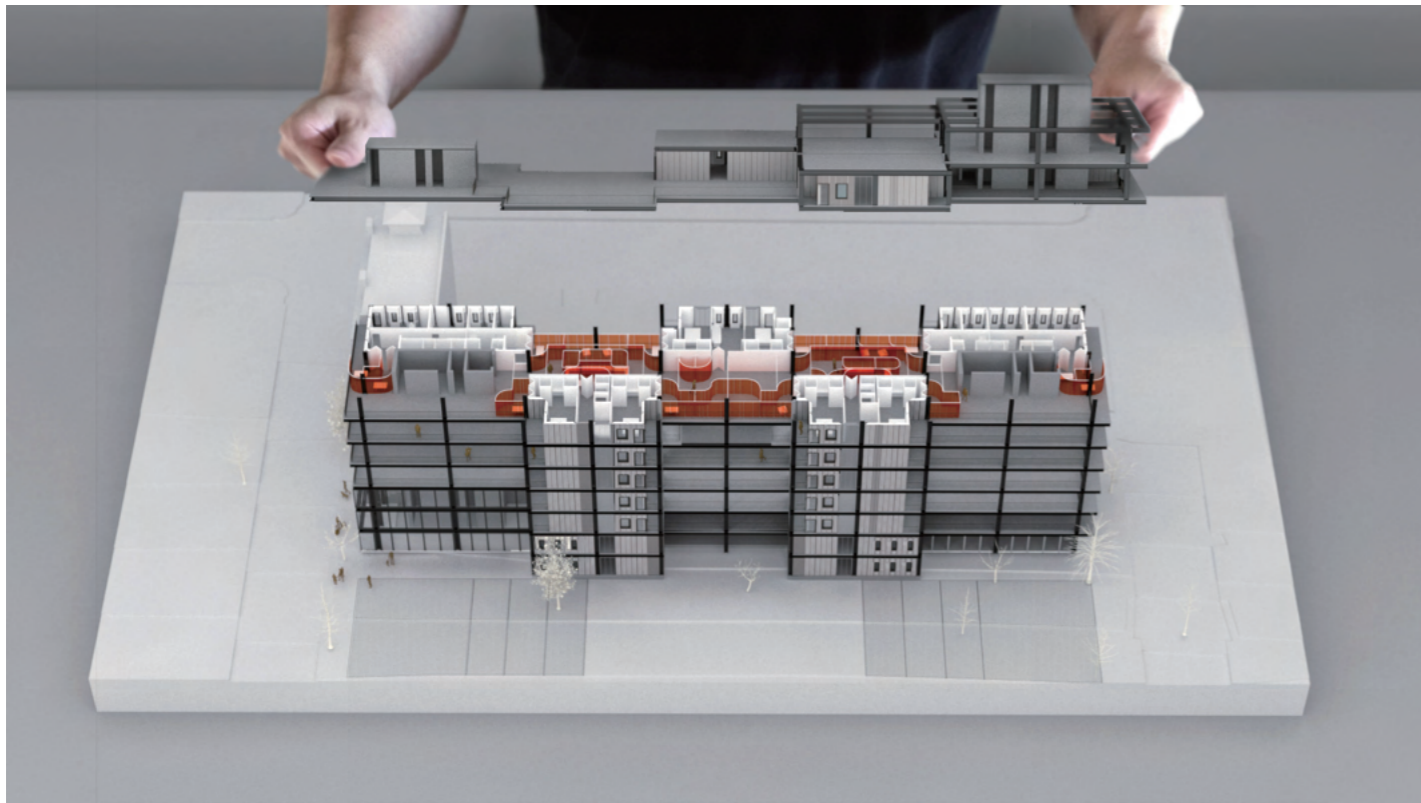
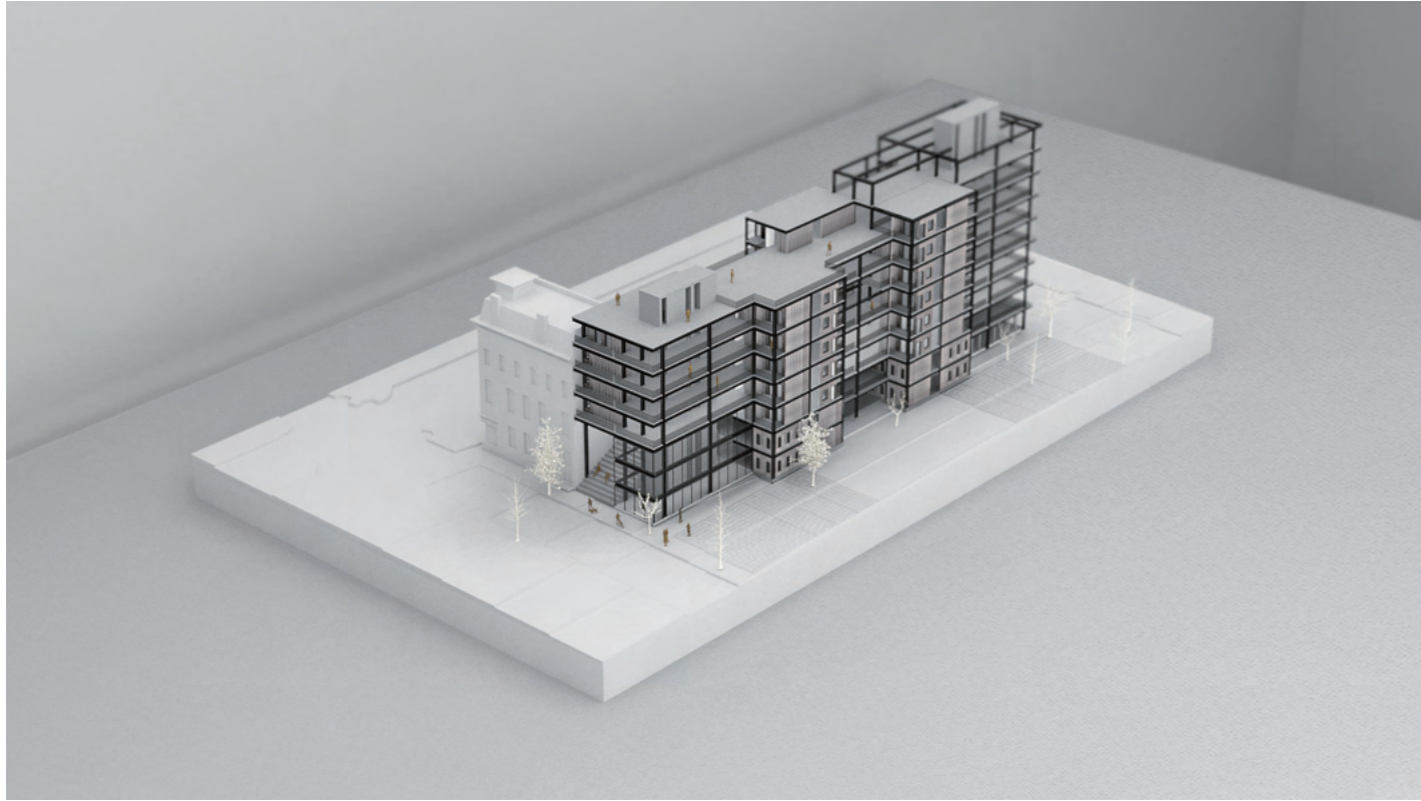
Domesticity in the Age of Pandemic

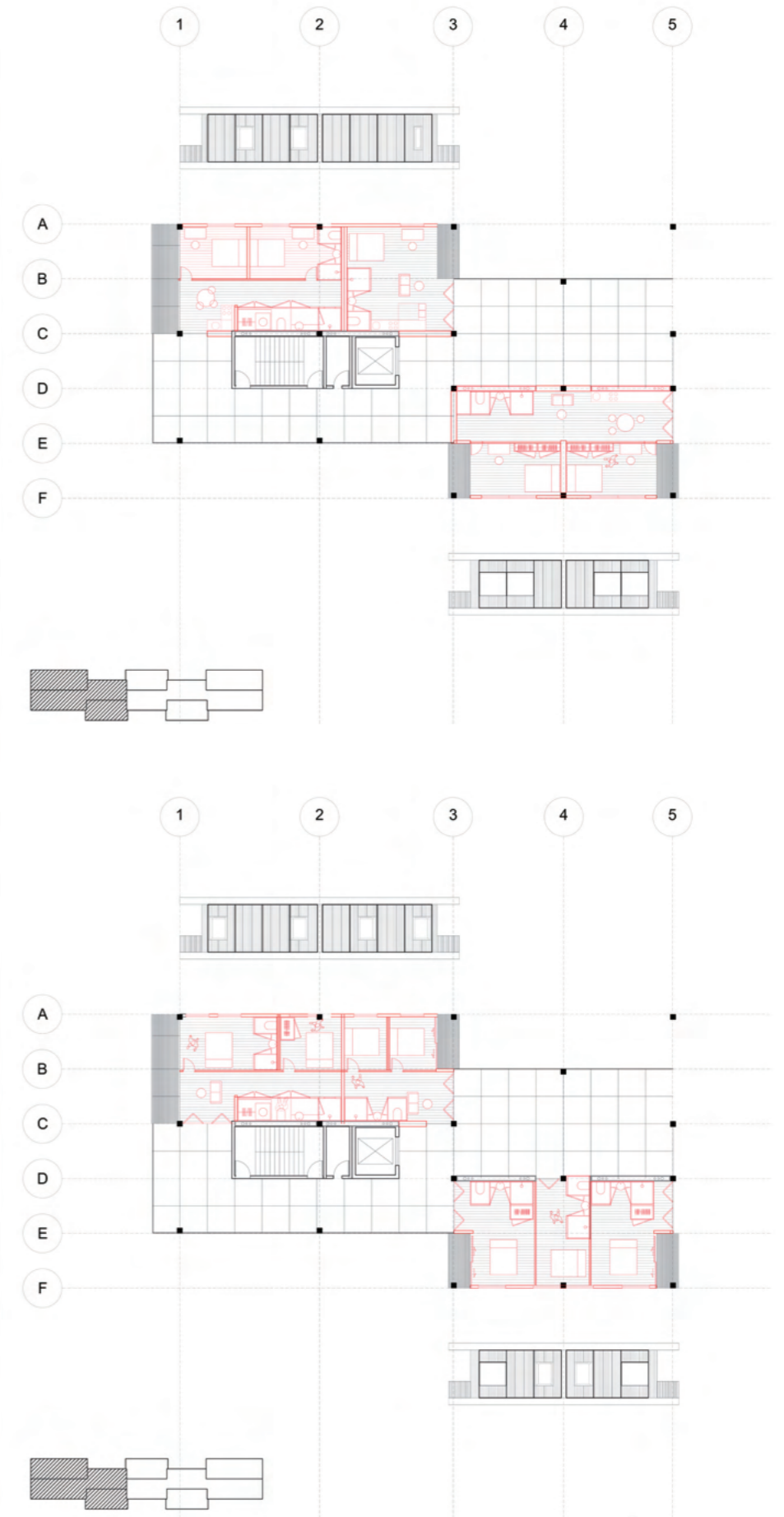
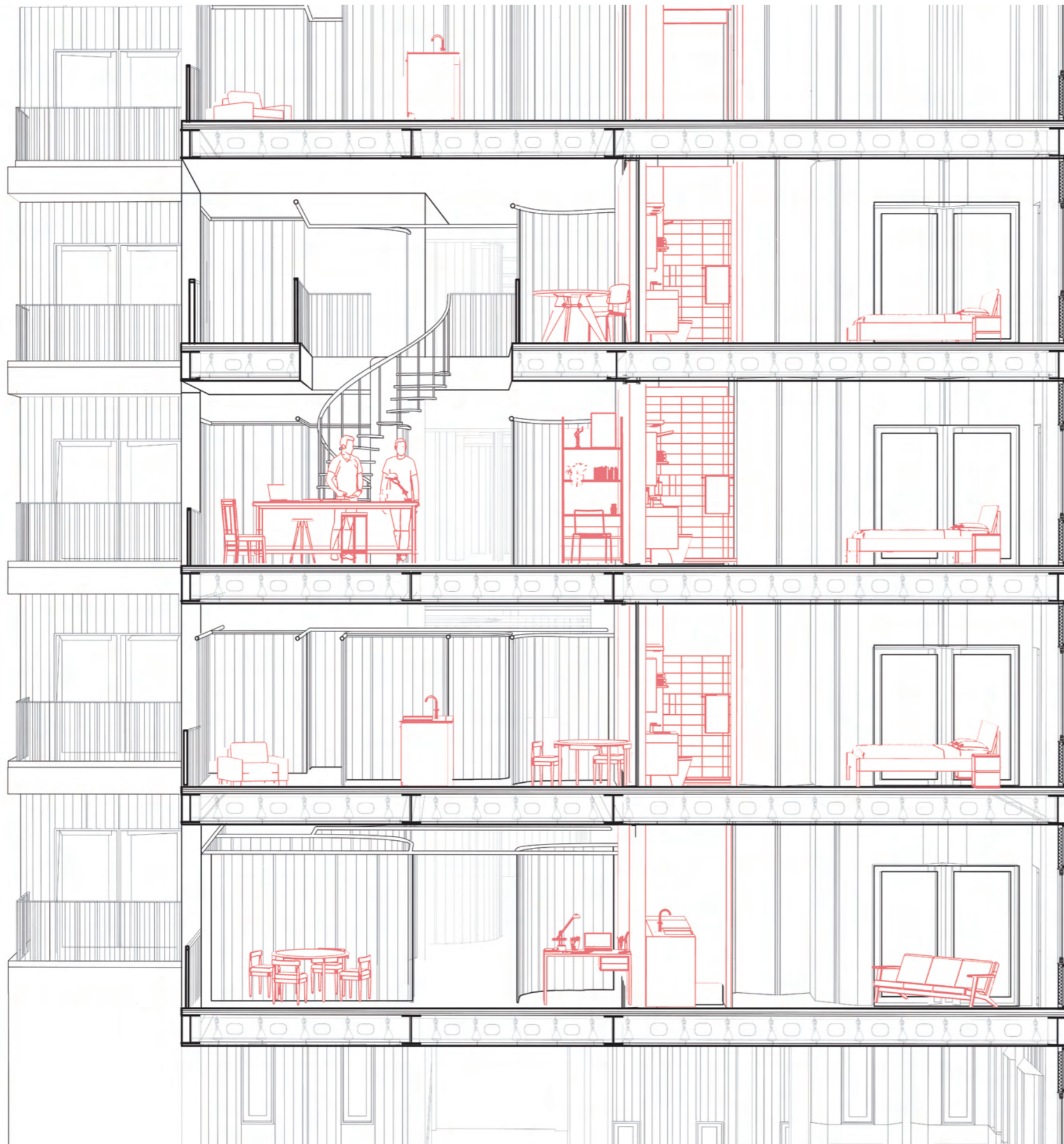
Team Work
Core III Studio at GSAPP
Instructor: Adam Frampton
Partner: Thanopon Wangsanguan
Site: Bronx, New York

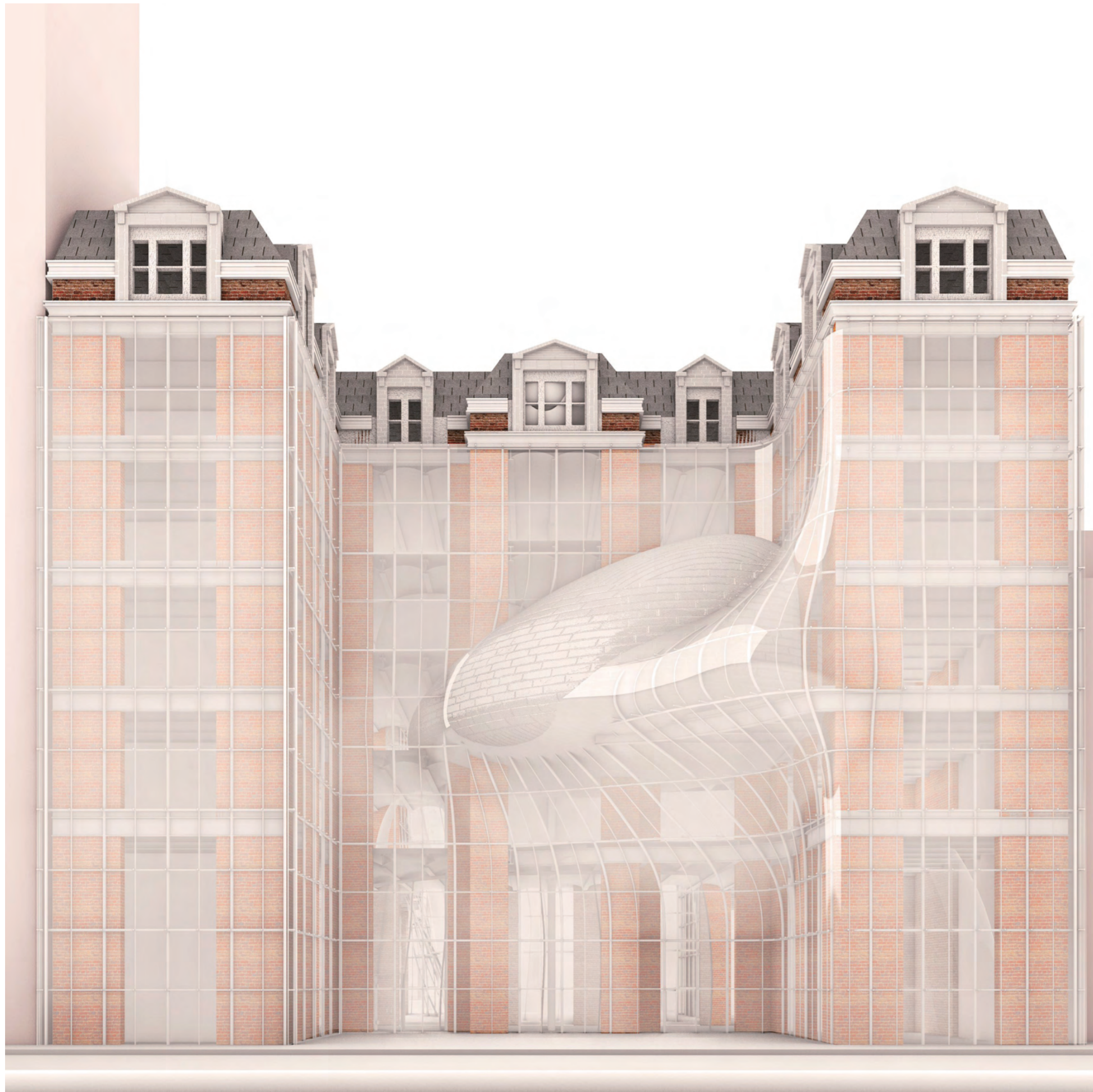
The project explores the meaning of domesticity under the pandemic scenario. It challenges the conventional idea of communal and private living spaces by providing the shared platform as an open framework, where participation is not limited within the private module where residents could reach out beyond their confined living quarters to create a sense of togetherness that enables residents to be alone together and build a resilient living environment that has a robust underlying infrastructure that has the capacity to accept programmatic changes and indeterminacy of the future.









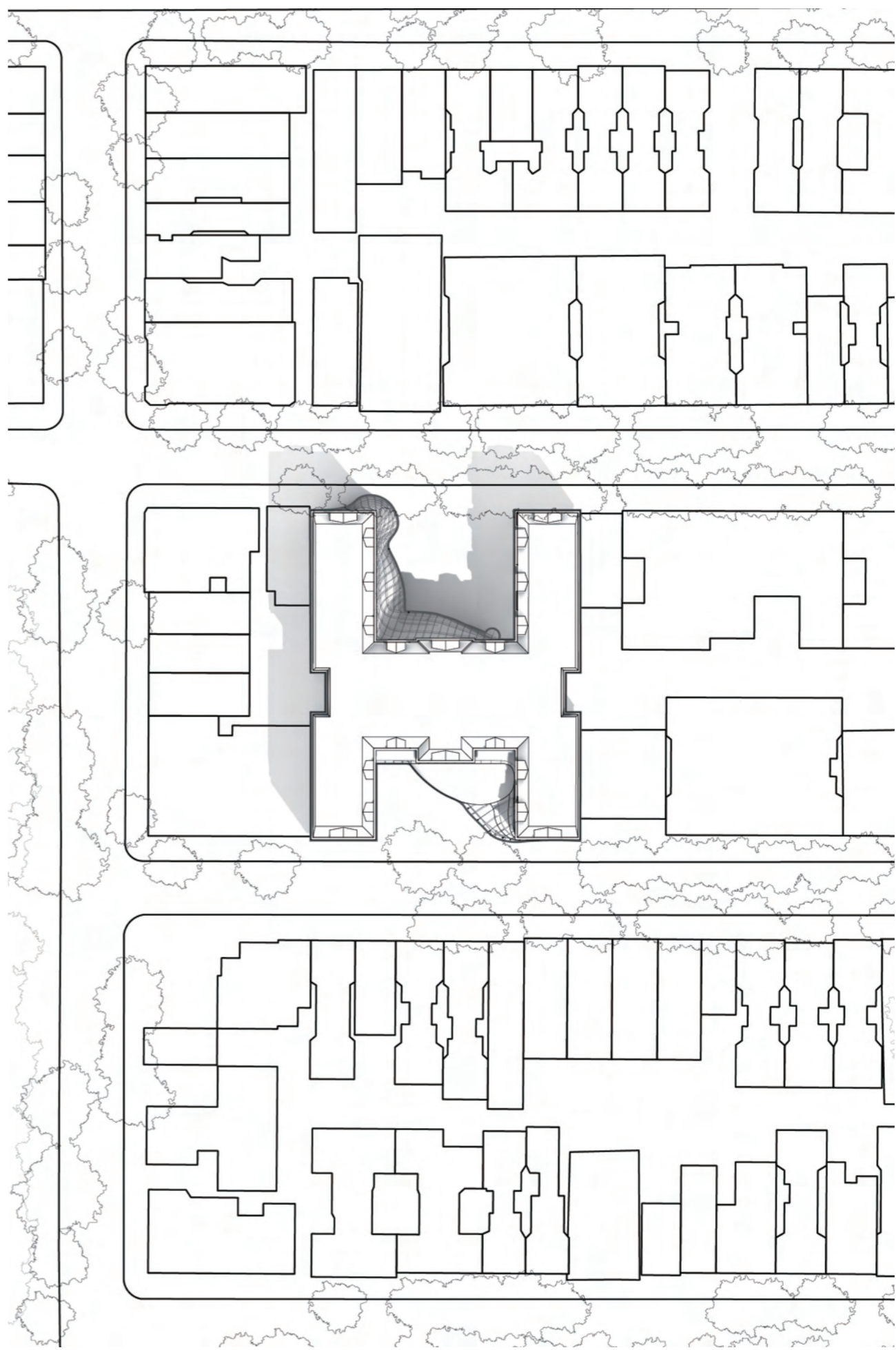
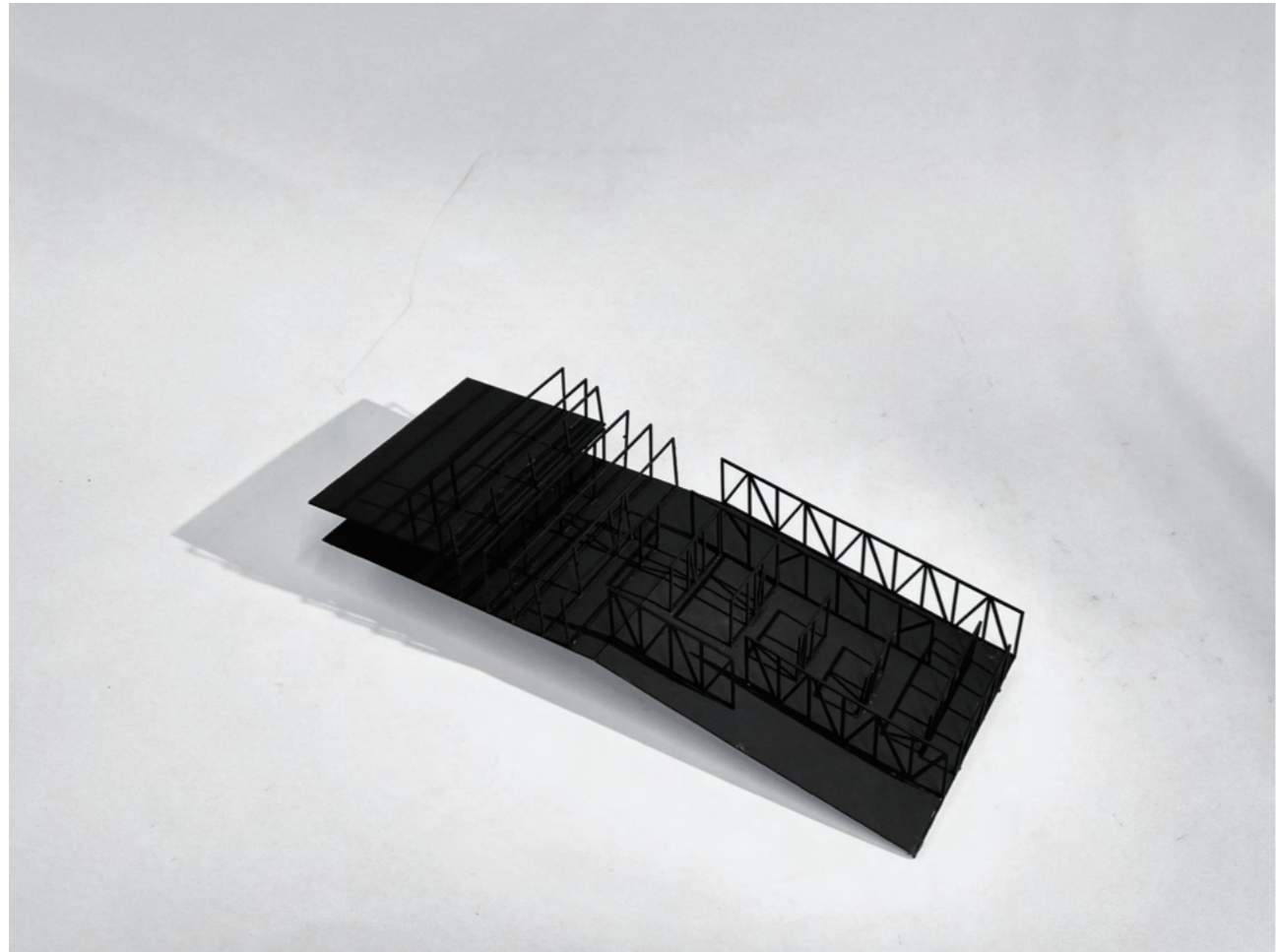
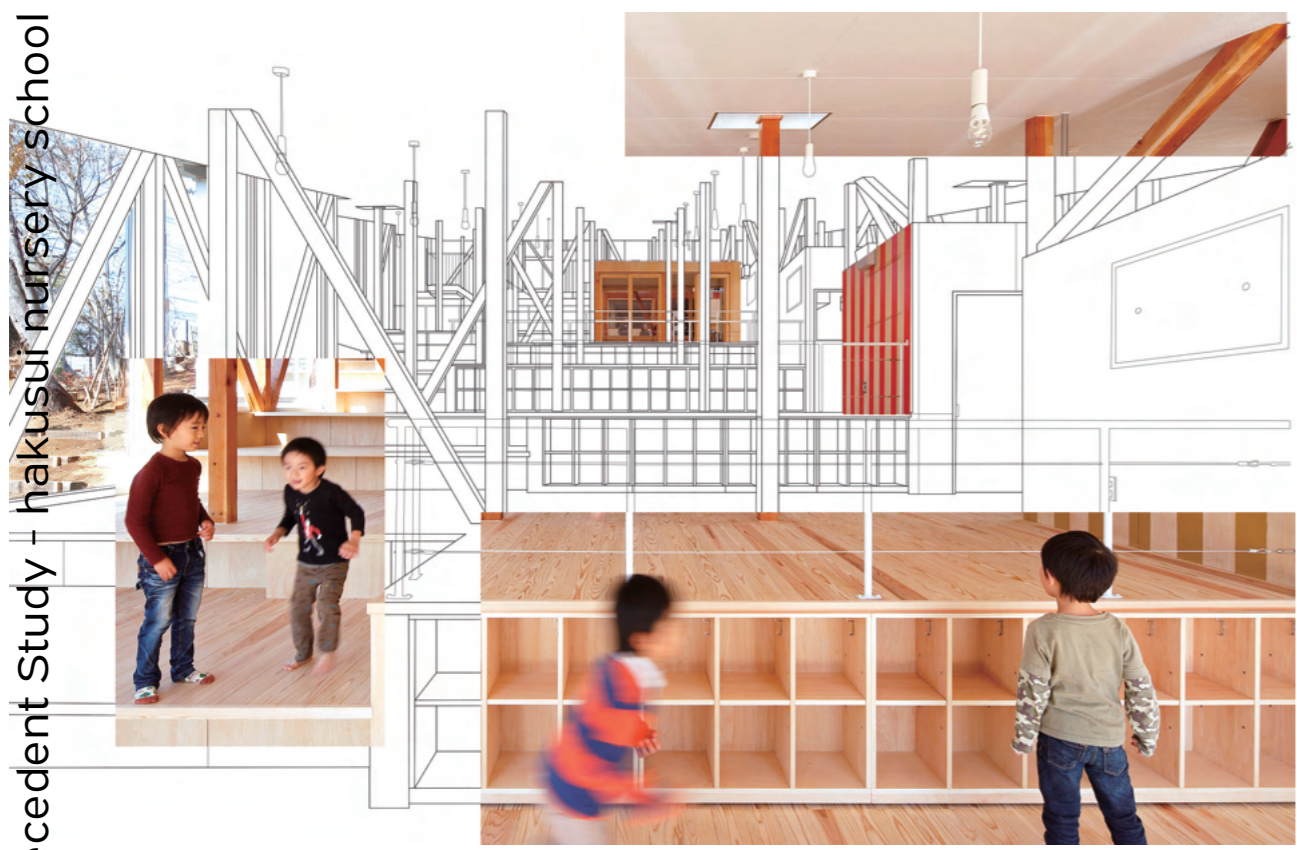


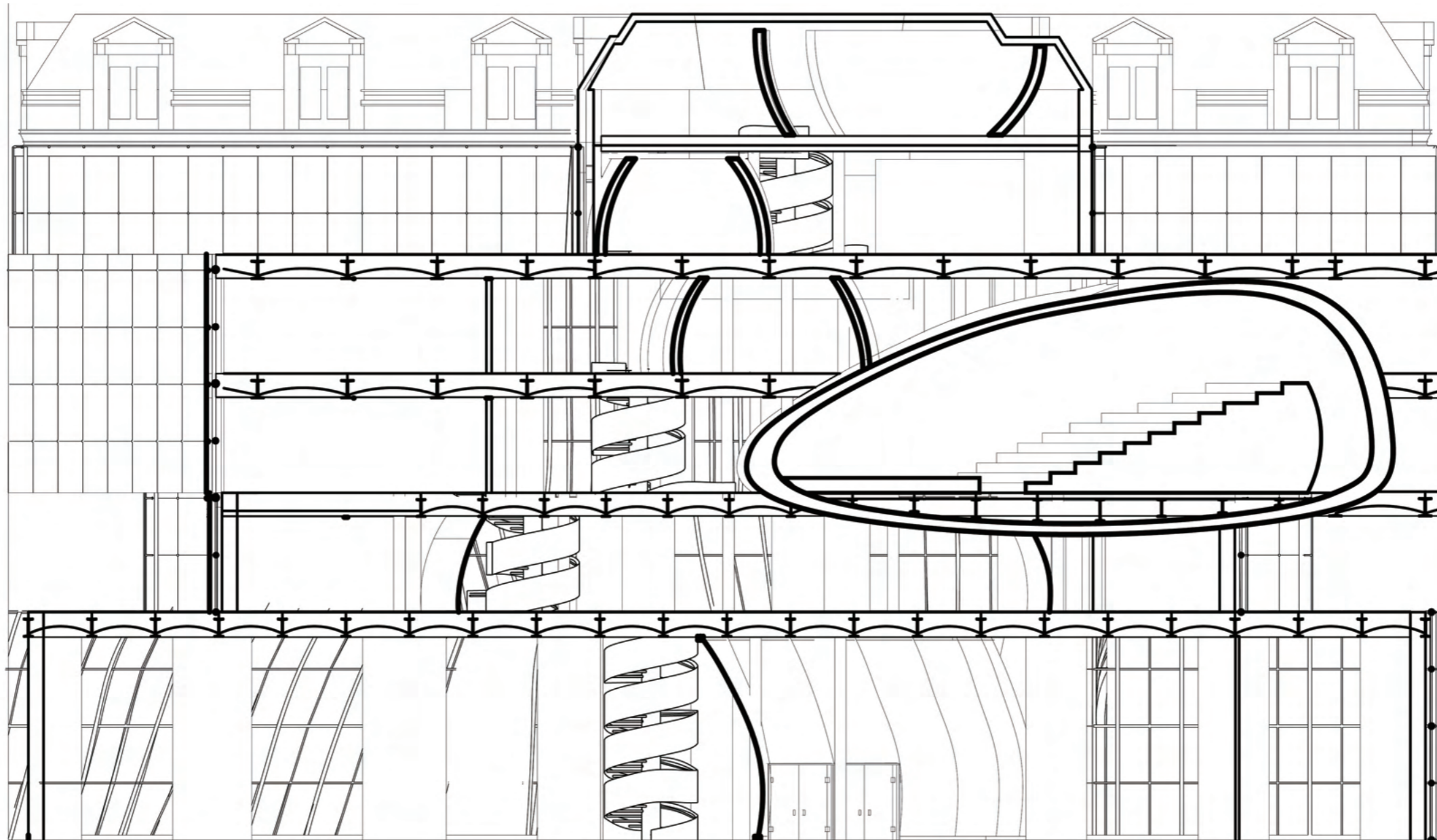
Renovation of the Former P.S 64

Individual
Core II Studio at GSAPP
Instructor: Emmett Zeifman
Site: East Village at Manhattan

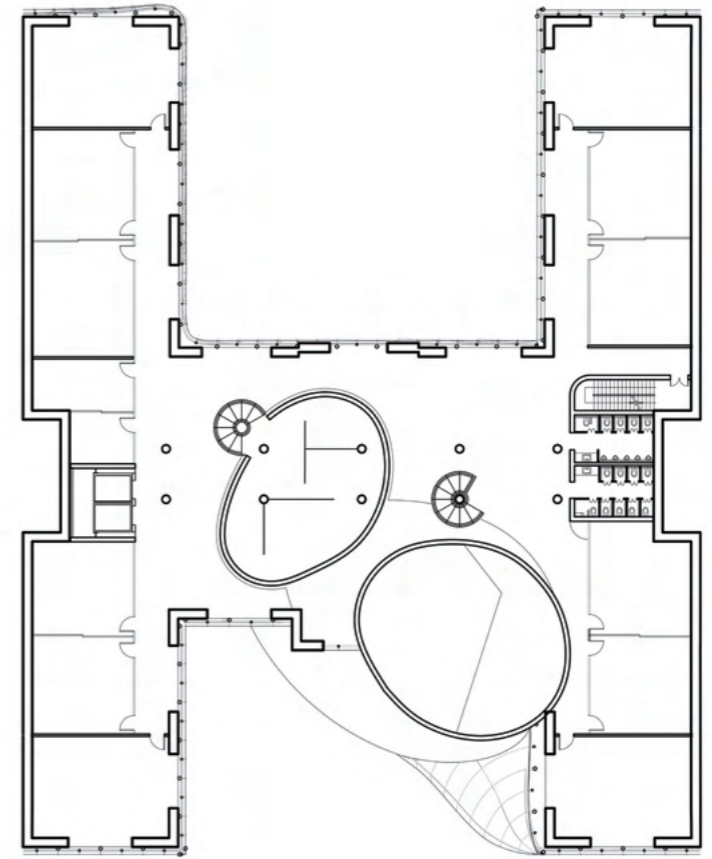
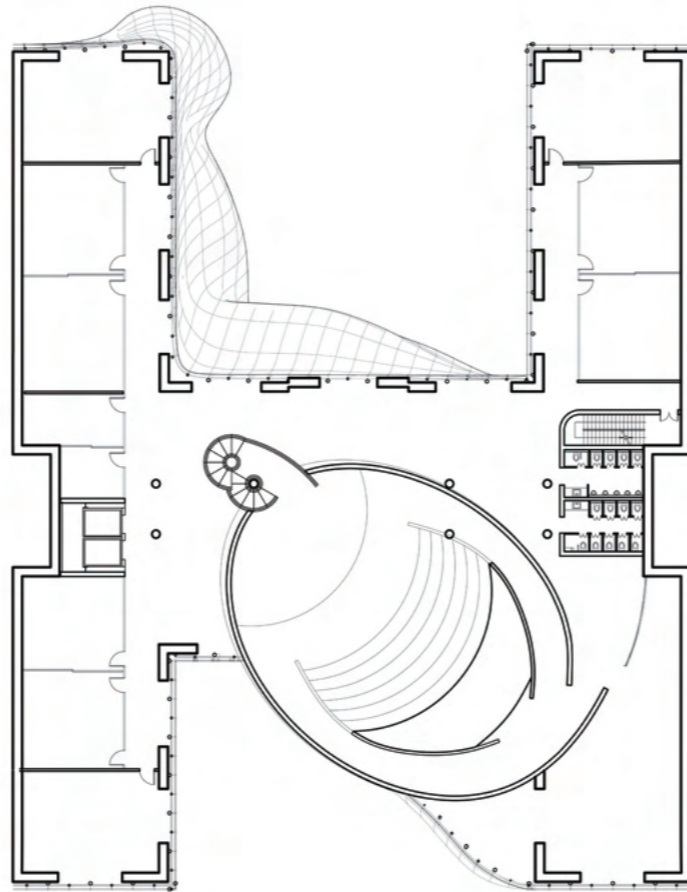
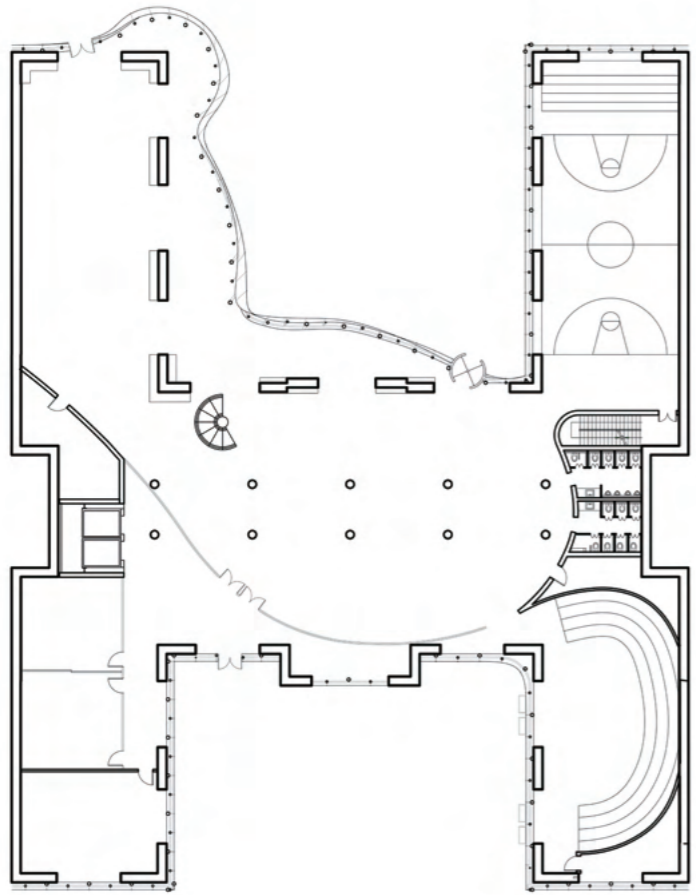
Designed based on the educational theories of John Dewey and the rich history of the East Village, the project intends to inherit the crucial role of the former public school P.S 64 as a community center for the immigrant population before it was abandoned. The role of East Village as a dynamic area where past immigrants, today's artists were embraced and encouraged to speak out is also cherished. The project explores the duality of the school space -- the insiders and outsiders, the children and the neighborhood.

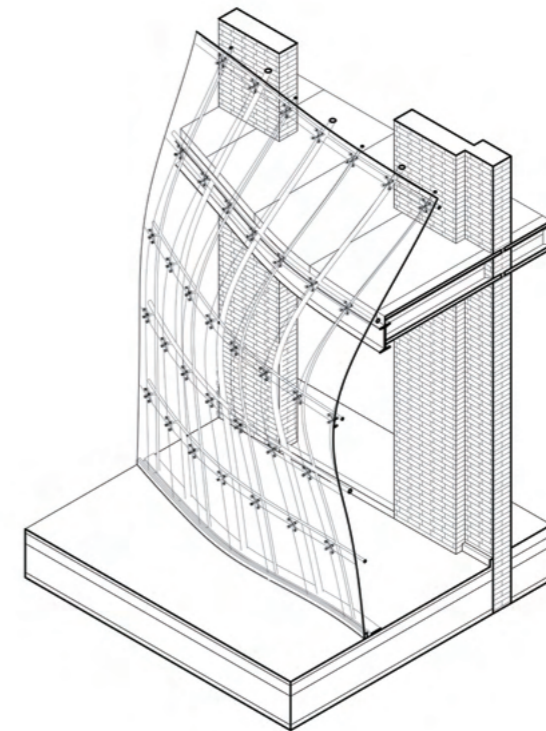
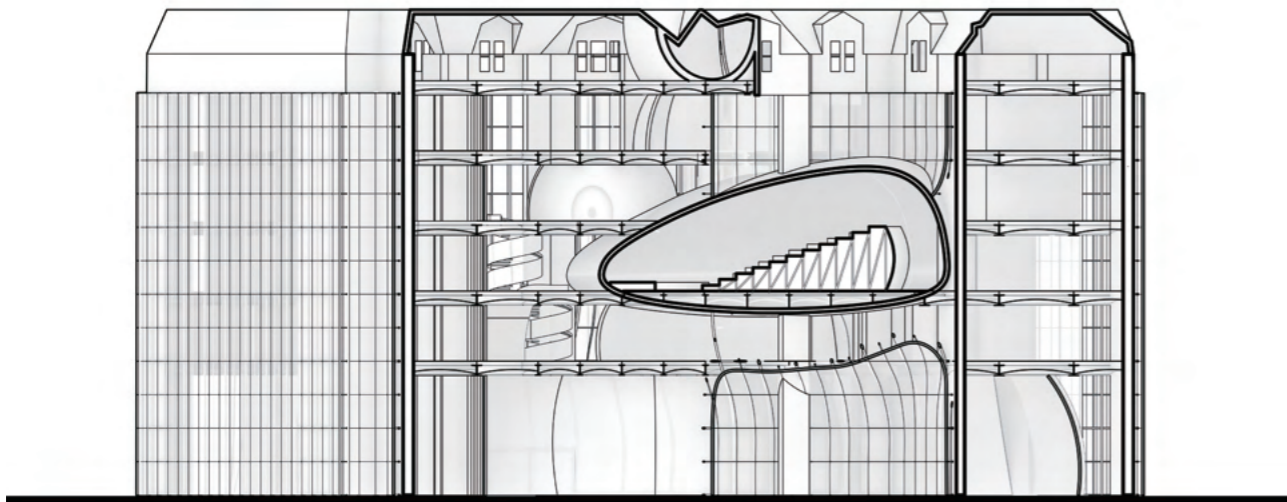
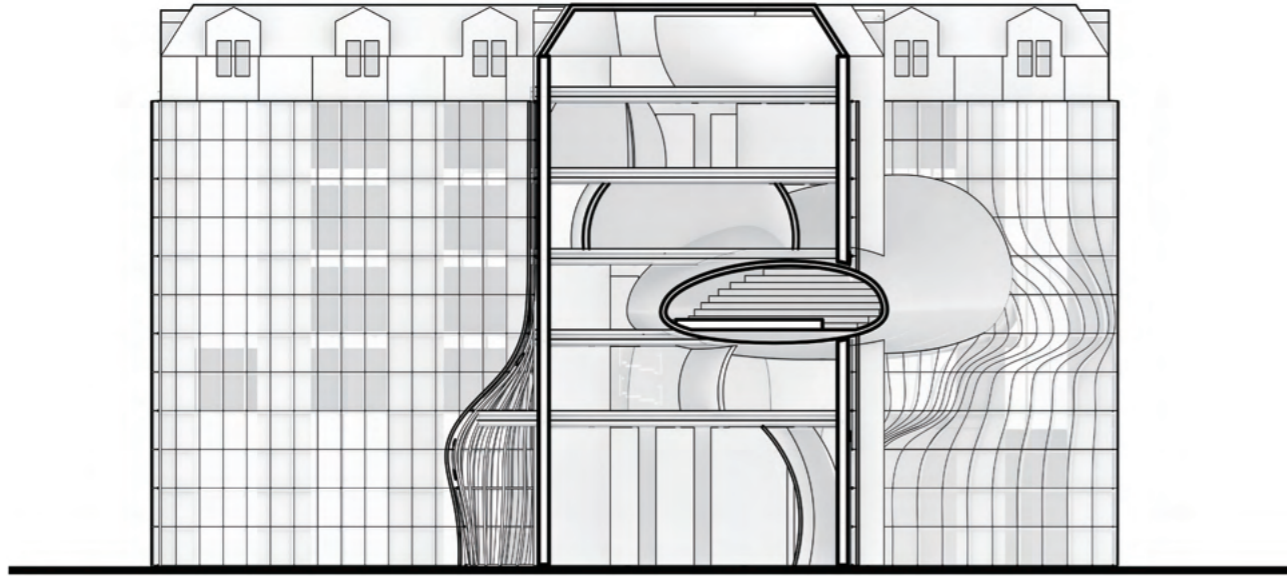
Precedent Study - hakusui nursery school

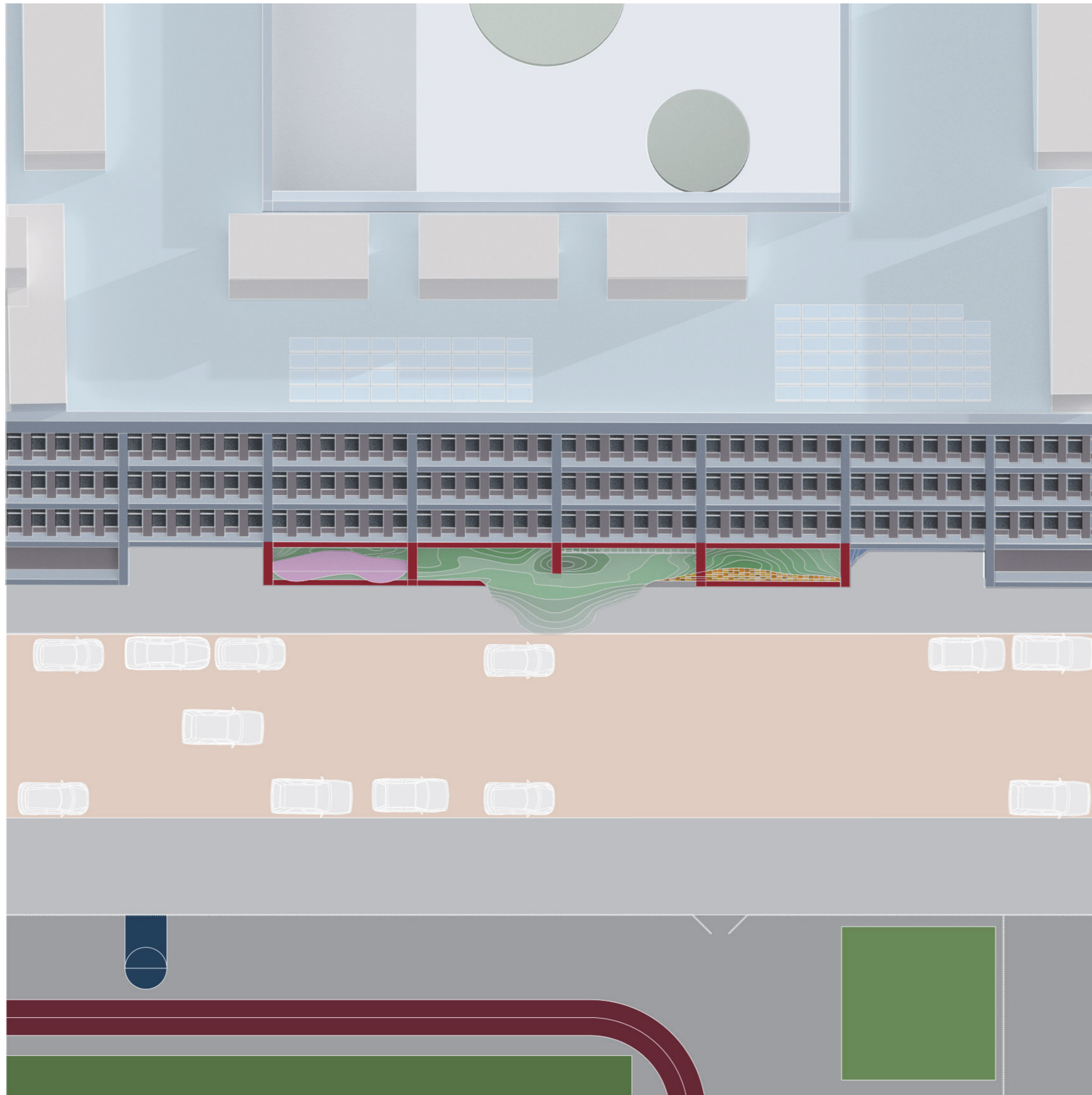




The project derived from previous **readymade models** and the theory by John Dewey that "**education is life itself!**" It aims to broaden the boundaries of education and provide a new community center to the neighborhood by creating a continuous sequence of programs and spaces that can be shared by both the school and the community.







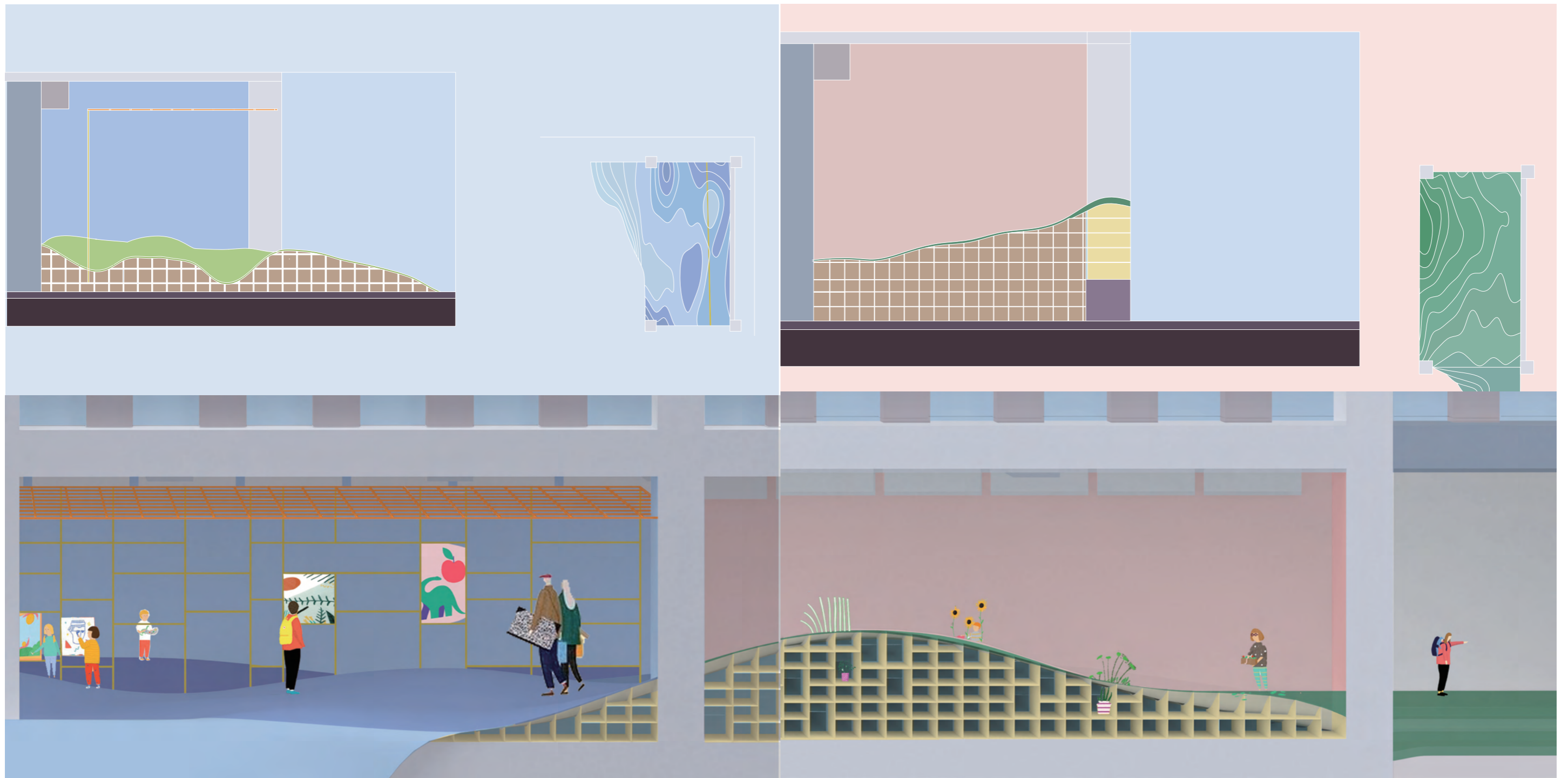
Interface for Enclosed Schools

Individual
Core I Studio at GSAPP
Instructor: Lindy Roy
Site: East Village at Manhattan

The project aims to build an interface for an isolated enclosed campus with 5 different schools. The site is a shared campus located near Broadway, which used to be a public school that was closed because of the huge size and difficulty to manage. The campus is protected by metal detector, fences, gates, and there is no school playgrounds or any other school amenities show to public. The students are mostly disadvantaged students in this affluent neighborhood. Moreover, because of the isolated and enclosed form of the school building, the students' lack of communication with the neighborhood get worse. With the interface being both inward and outward, it can provide a platform for students to express and a chance to attract public in. By showing different kinds of work by student, the sidewalk is also connected and would face the other side to create a better sense of community.



The first program is the podcast room for the schools. With the movable glass wall being fully closed, or fully open, the space can be podcast room or open space to give speech to public, and extend to the sidewalk. The second part is the performance space. The function of stage and seatings are defined by the landscape. The landscape were also used to create smaller and flexible space inside, including small seating space for conversations.



The third part would be used for art studio and gallery, which consist of two circulations. One is for the students to stay inside and draw on the canvas wall and being seen. The other is the outsider circulation, to visit the gallery exhibiting students' work hanging from the scaffolding. The last program is the communal garden, which implementing the full cycle of planting, selling and donate to the schools. Shelf by the sidewalk would be used to display/sell plant. Glass behind the shelf can show the raised floor system, soil and roots, exhibit the process for educational purpose.