

LEARNING PLATFORMS



CORE 2 - STUDIO CADENA SP20  
BY AGNES ANGGADA



## LEARNING PLATFORMS

This project proposes to introduce a series of ‘learning platforms’ for a K-8 school and the local neighborhood, which currently lacks safe and active community learning spaces.

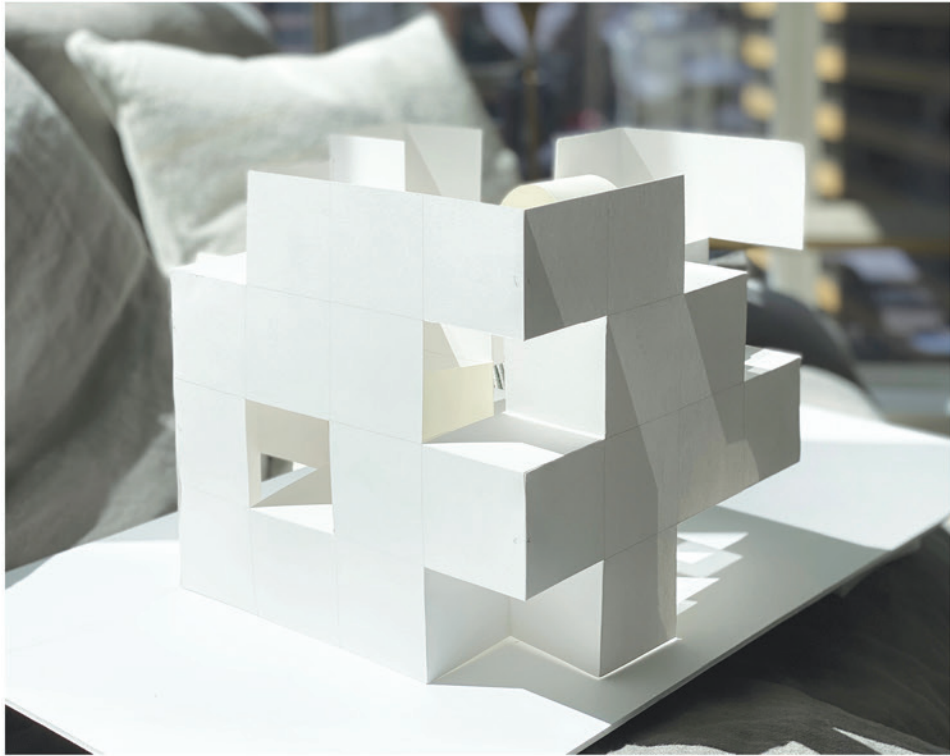
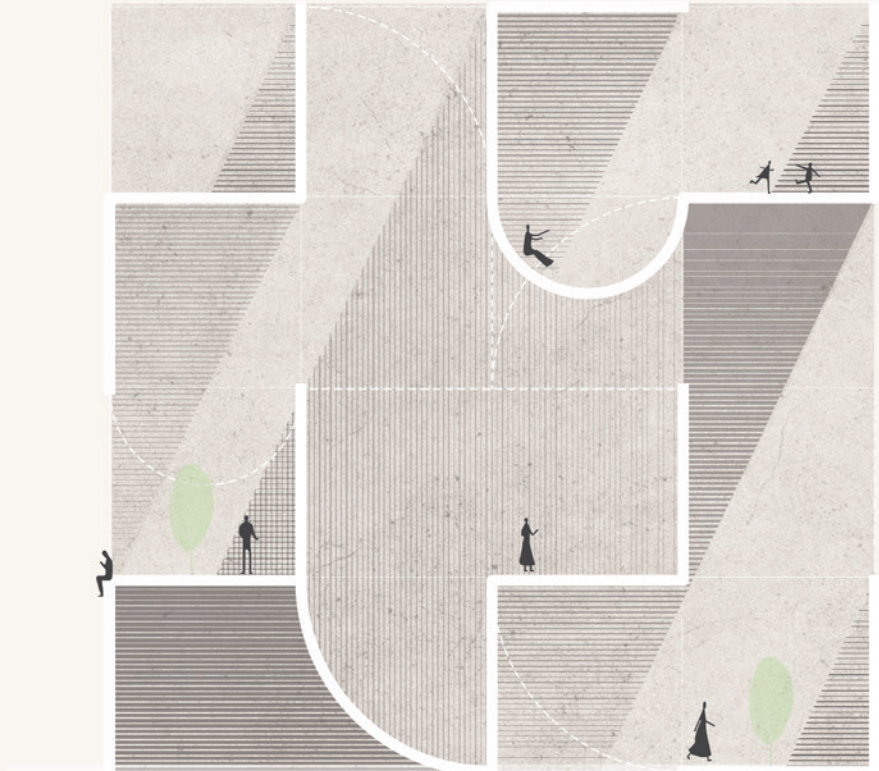
On the ground, an urban connection between 9th and 10th street anchors the community platforms, i.e. the library, play spaces, and the gymnasium, while also housing the two school lobbies. The platforms on the higher levels house the school’s learning spaces.

The two existing stair cores are preserved, and new timber structures become the spatial framework for the platforms. In contrast to typically enclosed learning spaces, they create a series of split level conditions, allowing opportunities for cross-platform visual connections and natural light and air to permeate throughout.

The classrooms always start with a homeroom, which acts as a transitional space as well as a home base for the students, instilling a sense of domesticity in a typically institutionalized space. A new central staircase threads across the multiple levels, whose landings are generously-sized to allow for collaborative activities to take place. This circulation spine is where students, regardless of their grade, can learn together and participate in activities outside of the traditional classroom.

Altogether, this project aims to create a different spatial typology and educational experience for students during the weekdays, and the local community in the evening and weekends. One that’s centered around flexibility, collaboration, and openness.

SPATIAL PROTOTYPE



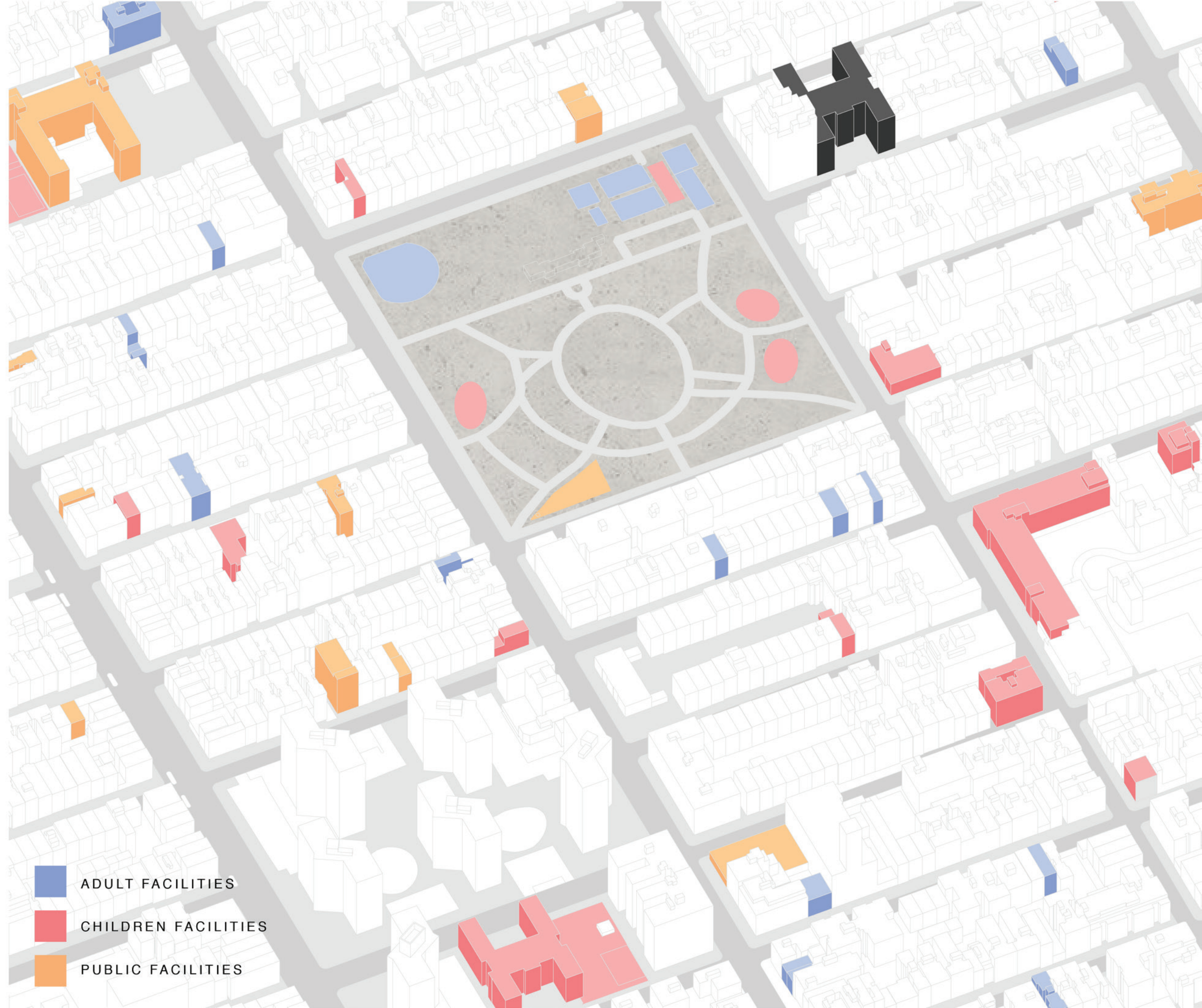
SPATIAL PROTOTYPE



SITE ANALYSIS



# SITE ANALYSIS



# SITE ANALYSIS

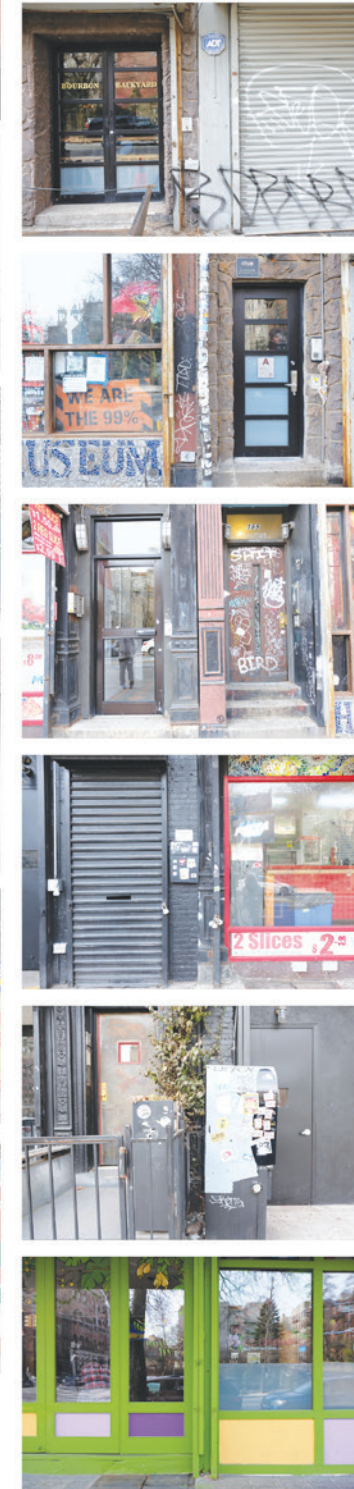
## AVE B



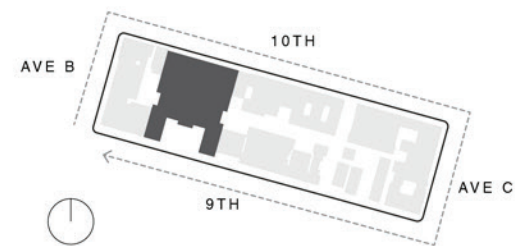
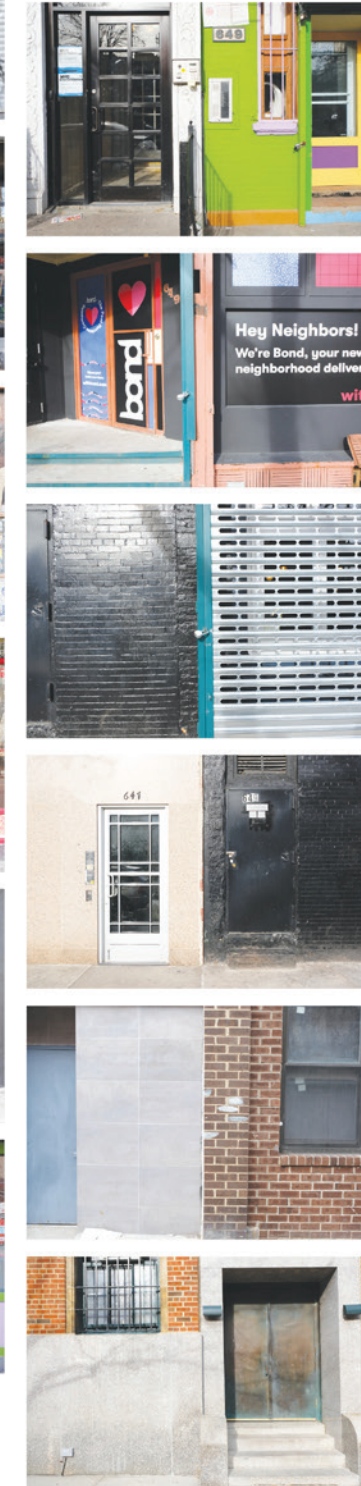
## 10TH



## AVE C



## 9TH



# SITE ANALYSIS



TRASH

BARRIERS

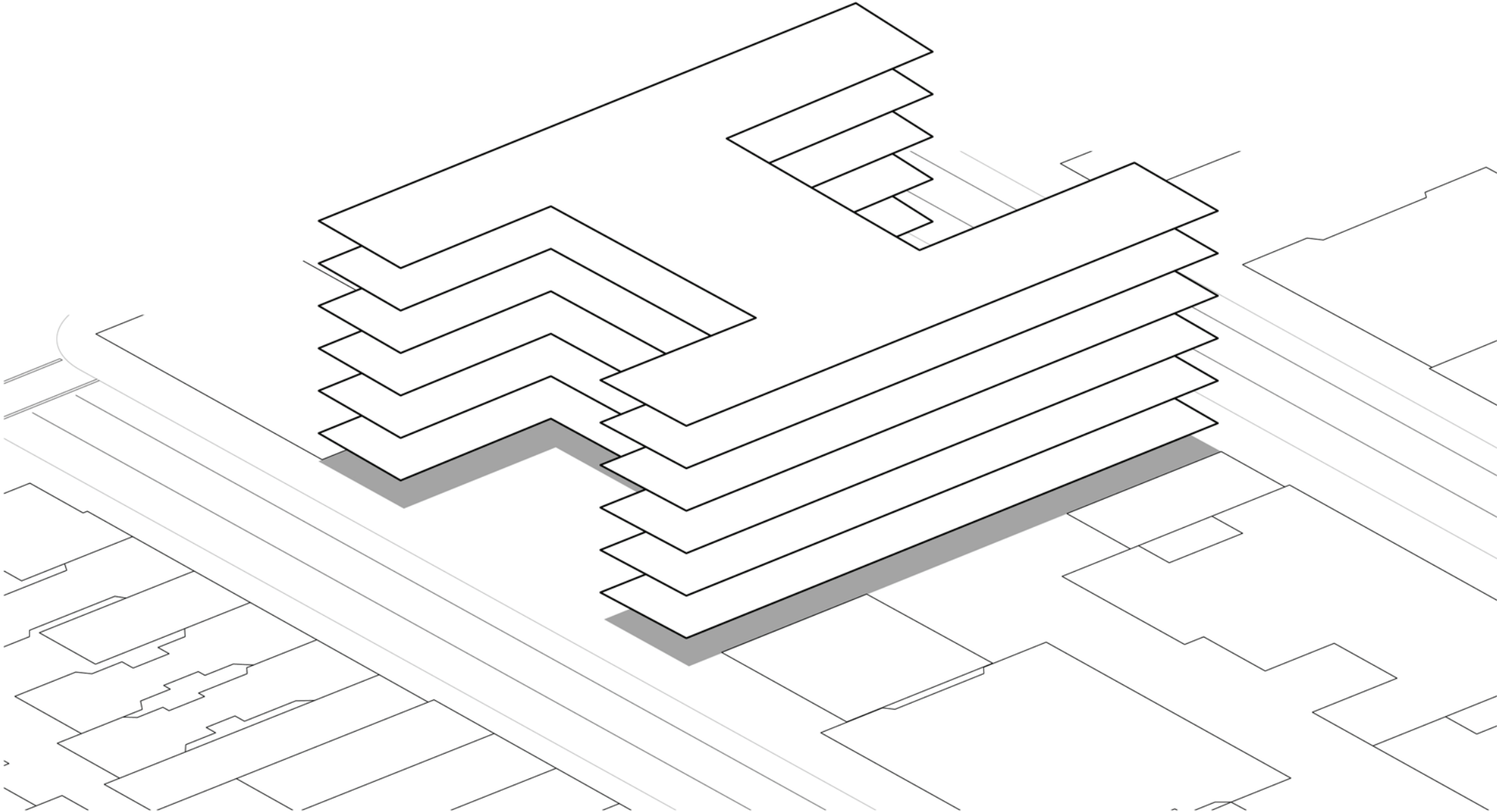
BIKE

OBJECTS



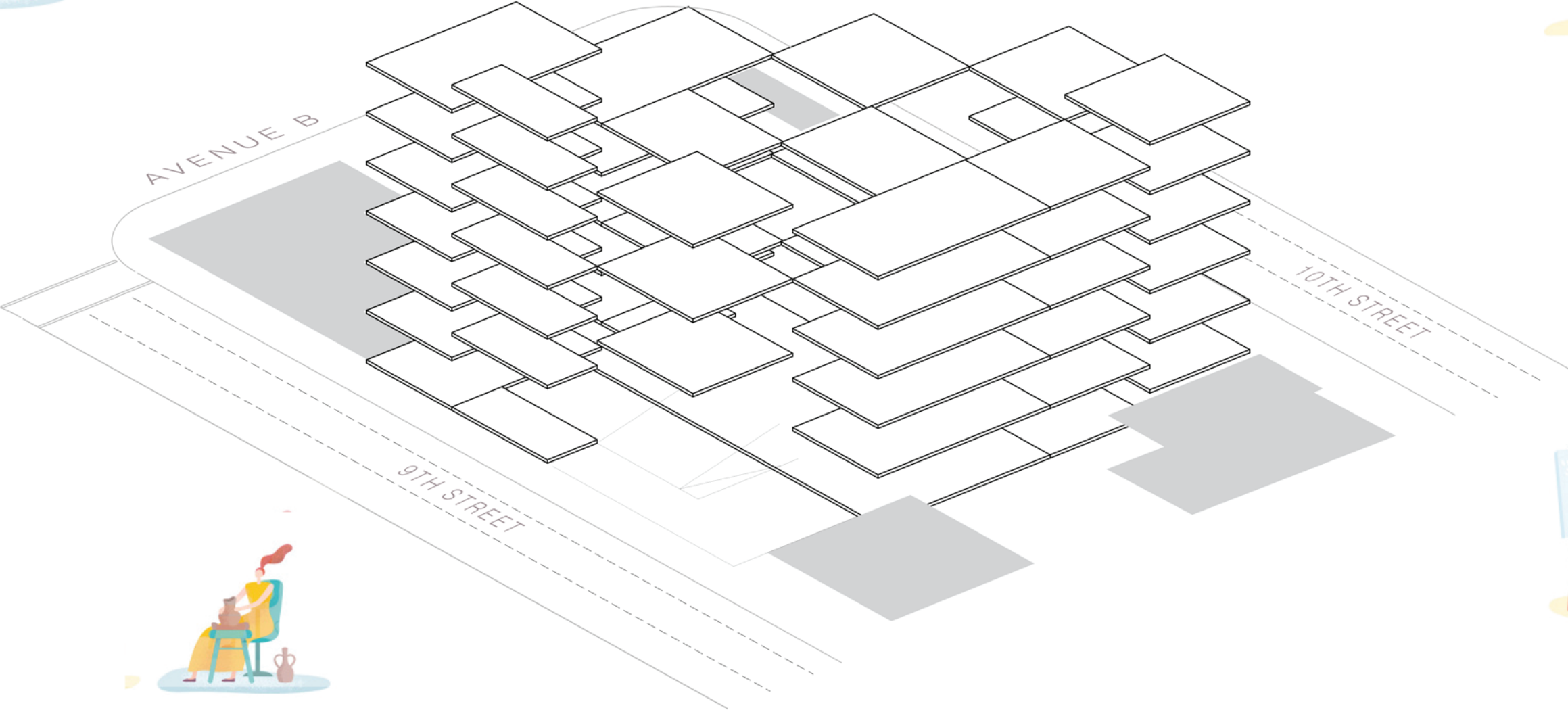


**OPAQUE**  
**DISCONNECTED**  
**INSTITUTIONAL**  
**UNWELCOMING**



PROPOSED: LEARNING PLATFORMS

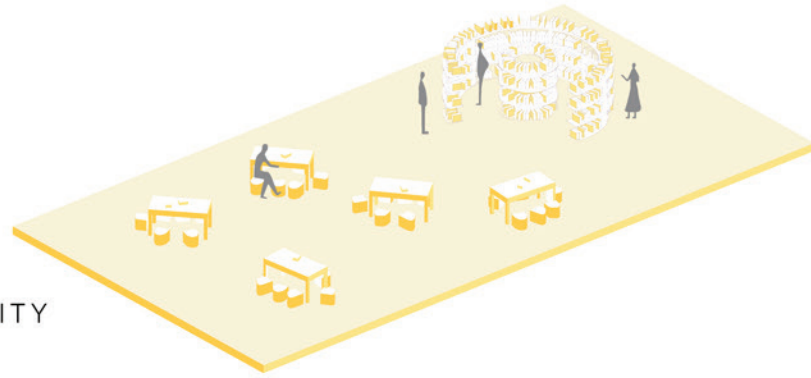
POROUS  
CONNECTED  
DOMESTIC  
INVITING



# PLATFORM TYPOLOGIES

3 ZONES FOR LEARNING :

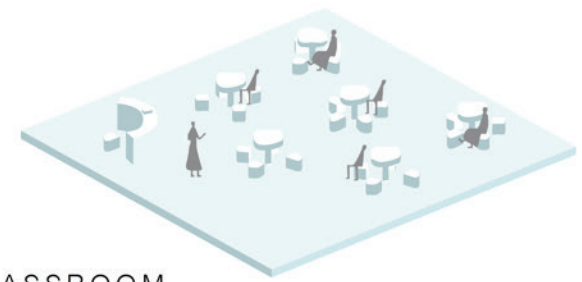
COMMUNITY



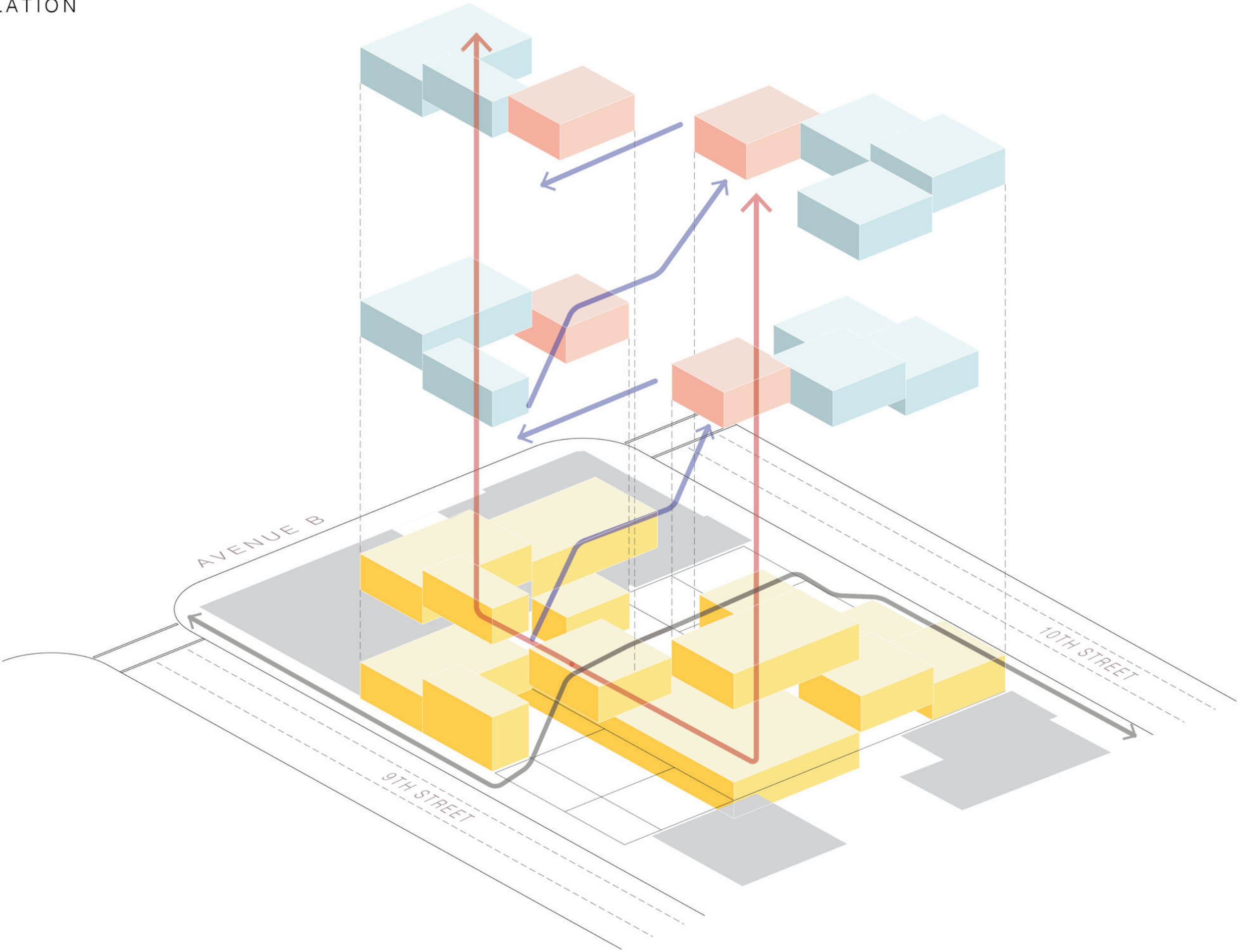
COLLABORATIVE



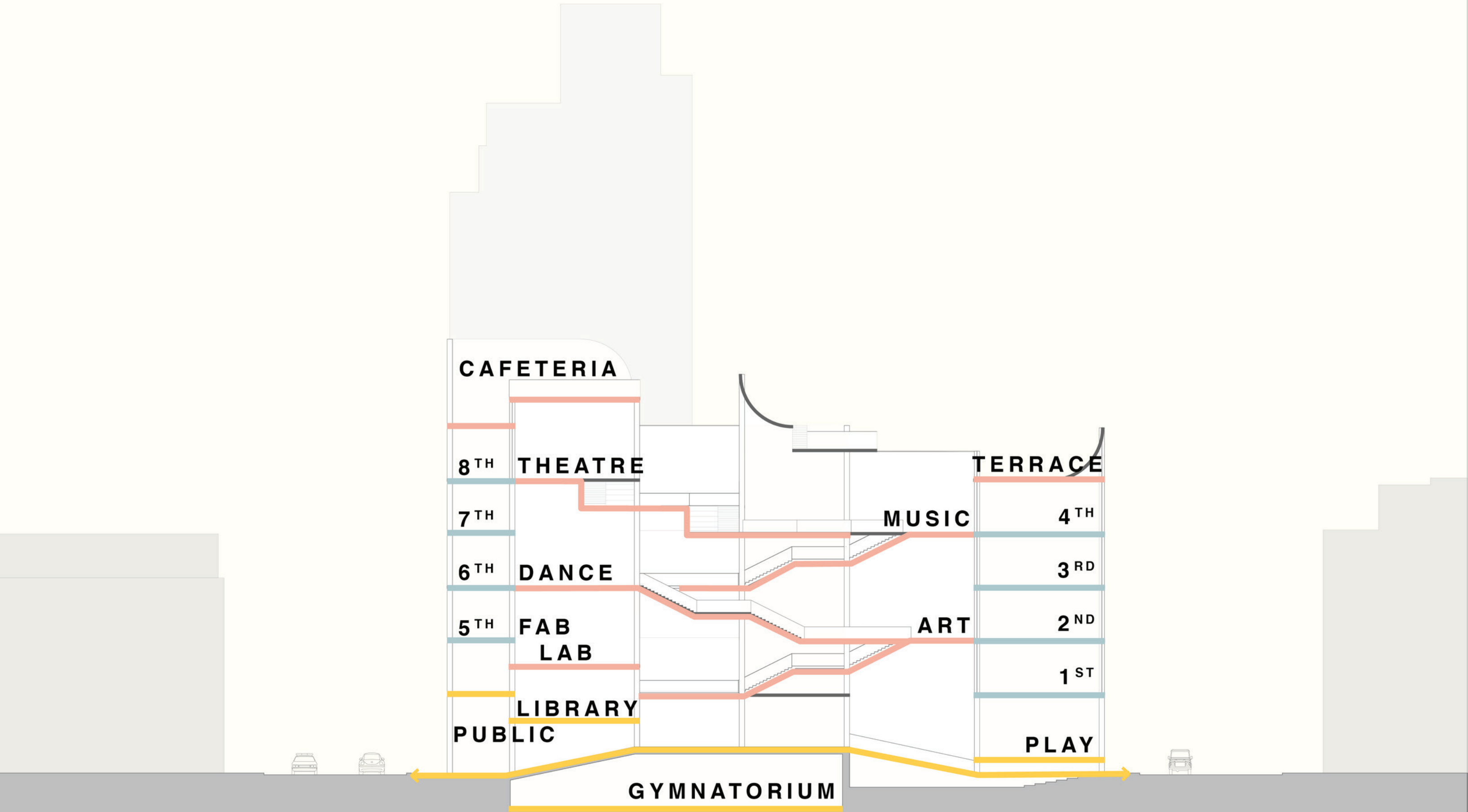
CLASSROOM



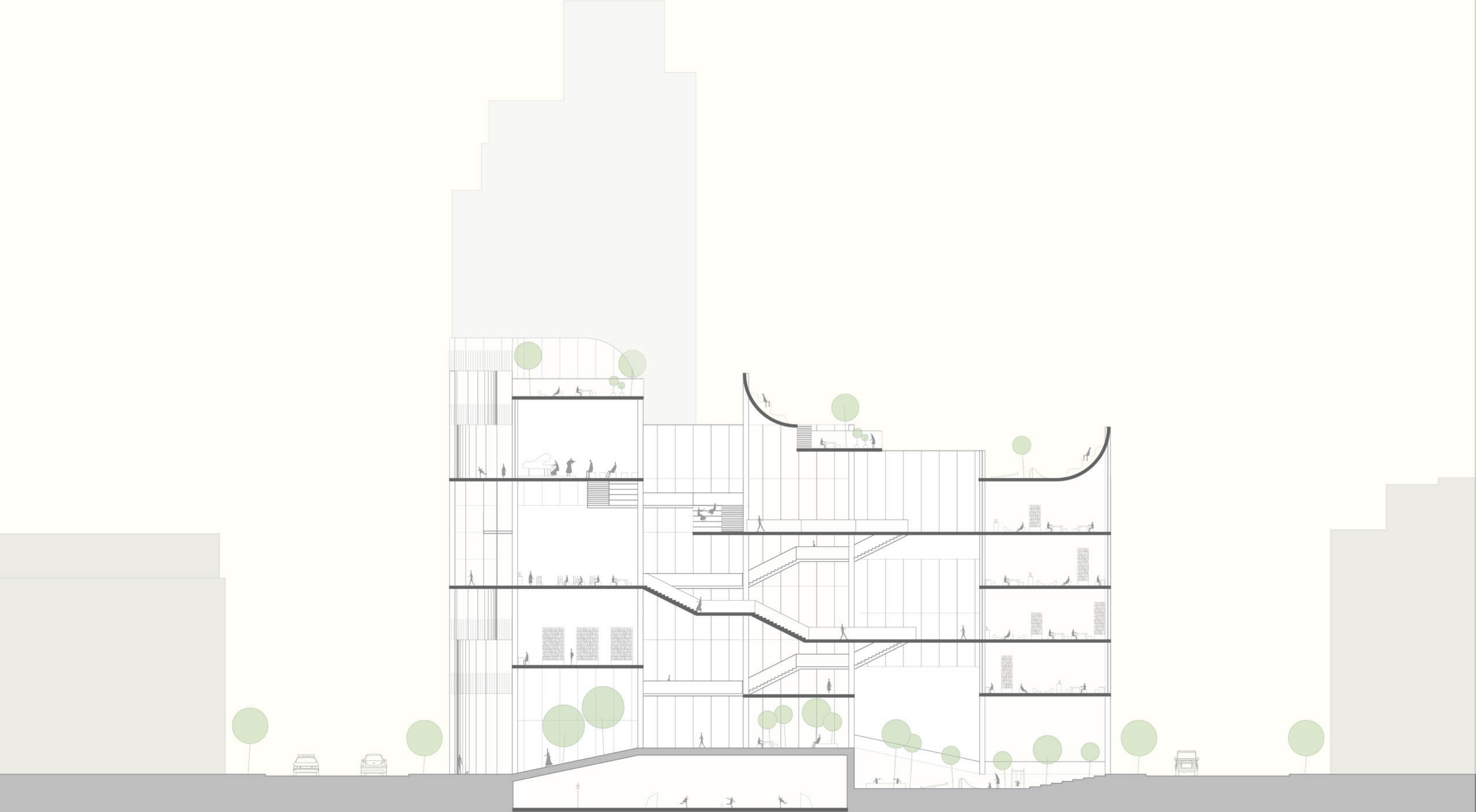
CIRCULATION



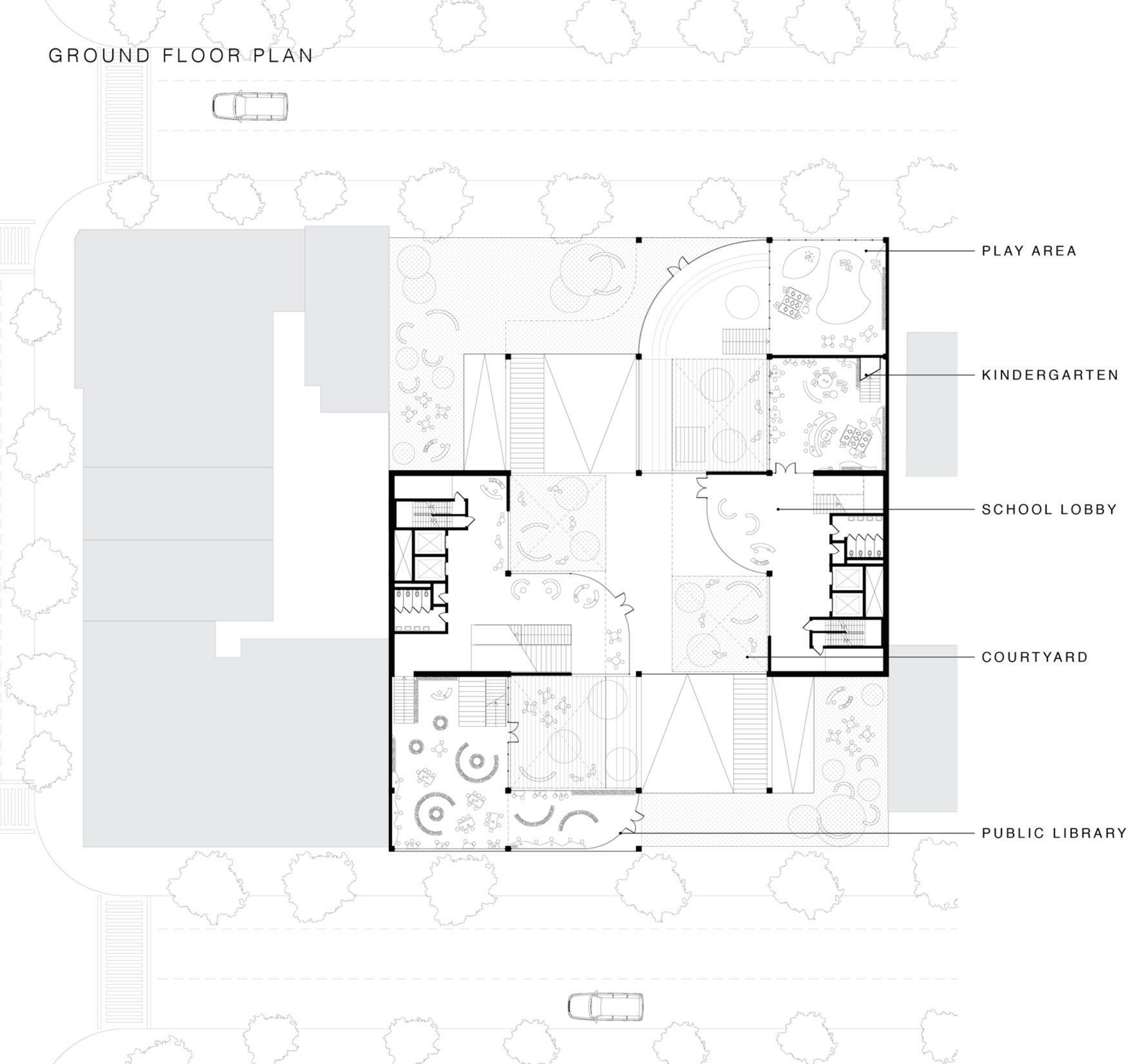
PROGRAM



N/S SECTION



GROUND FLOOR PLAN



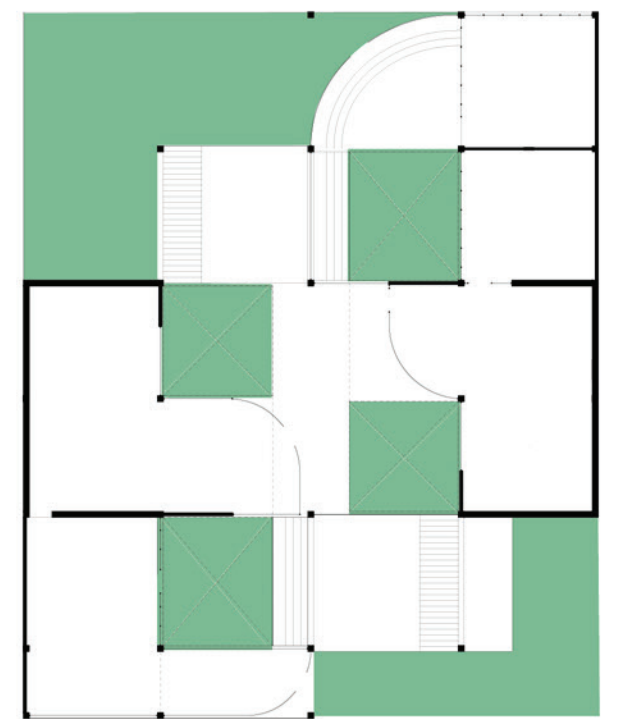
PLAY AREA

KINDERGARTEN

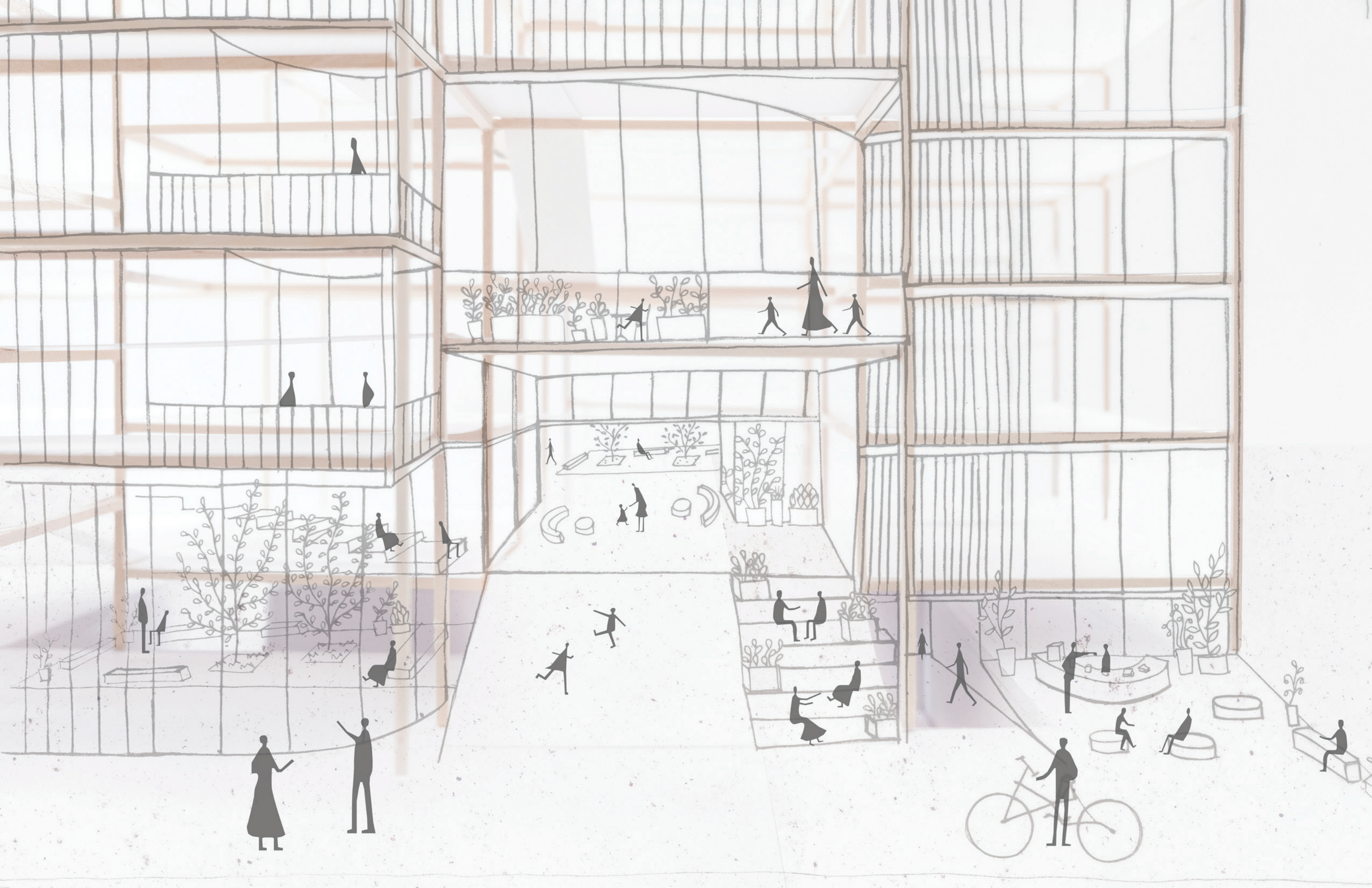
SCHOOL LOBBY

COURTYARD

PUBLIC LIBRARY

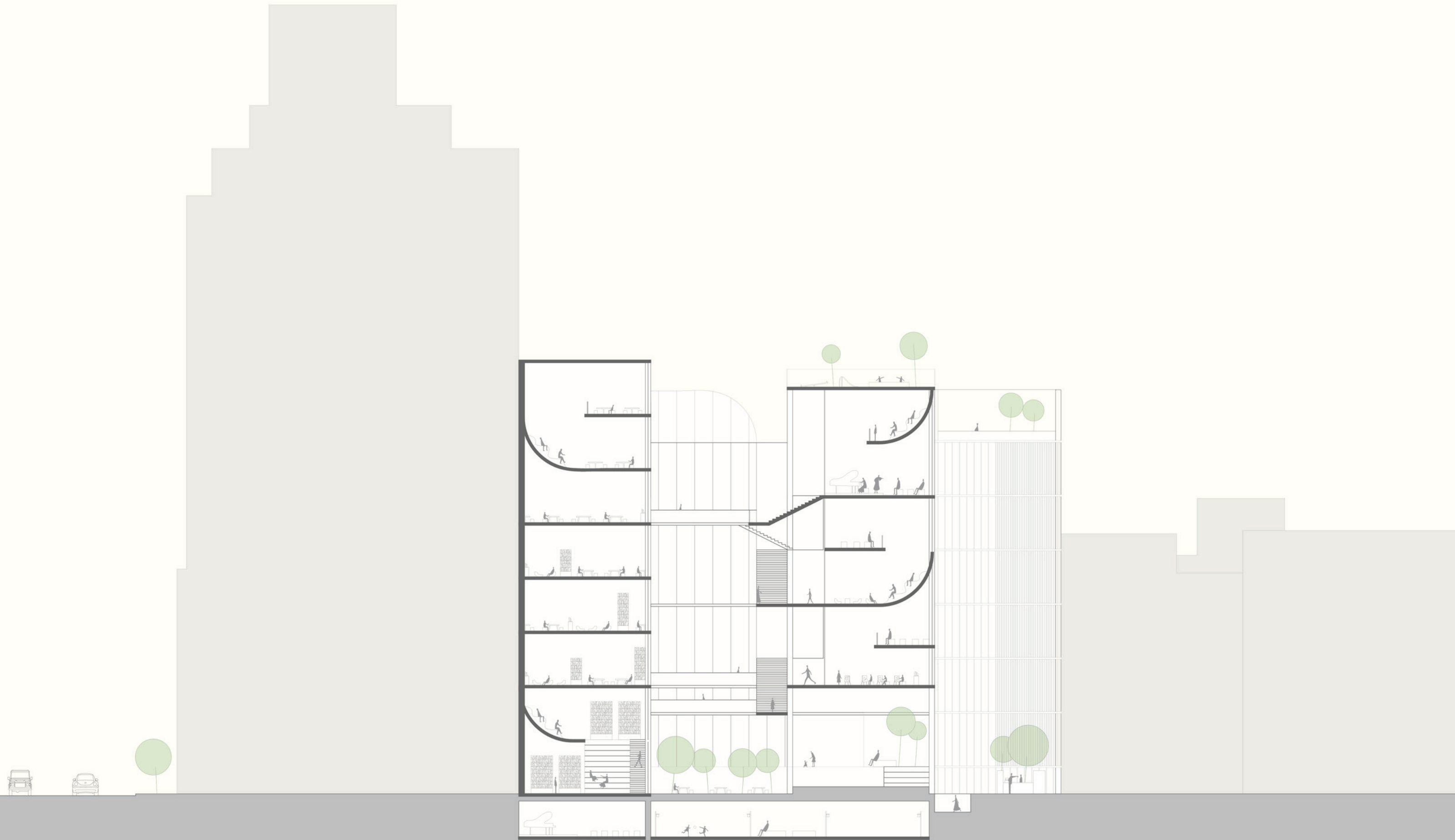


COURTYARDS

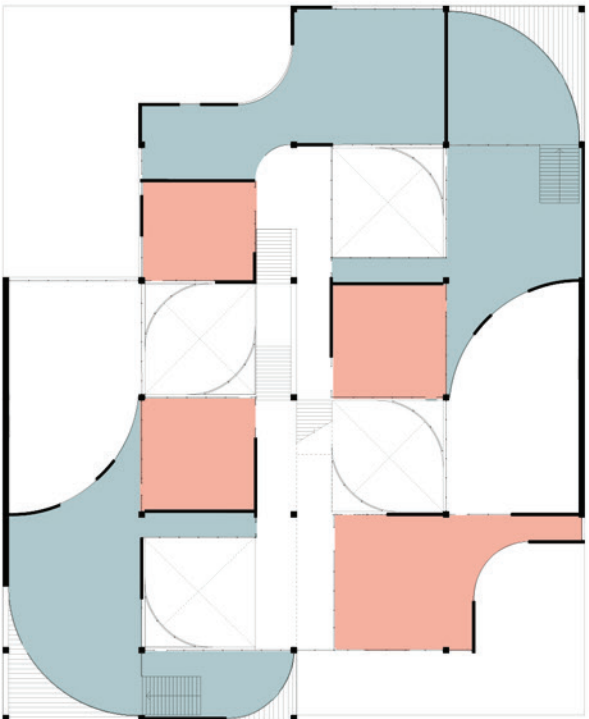




E/W SECTION



TYPICAL UPPER FLOOR PLAN

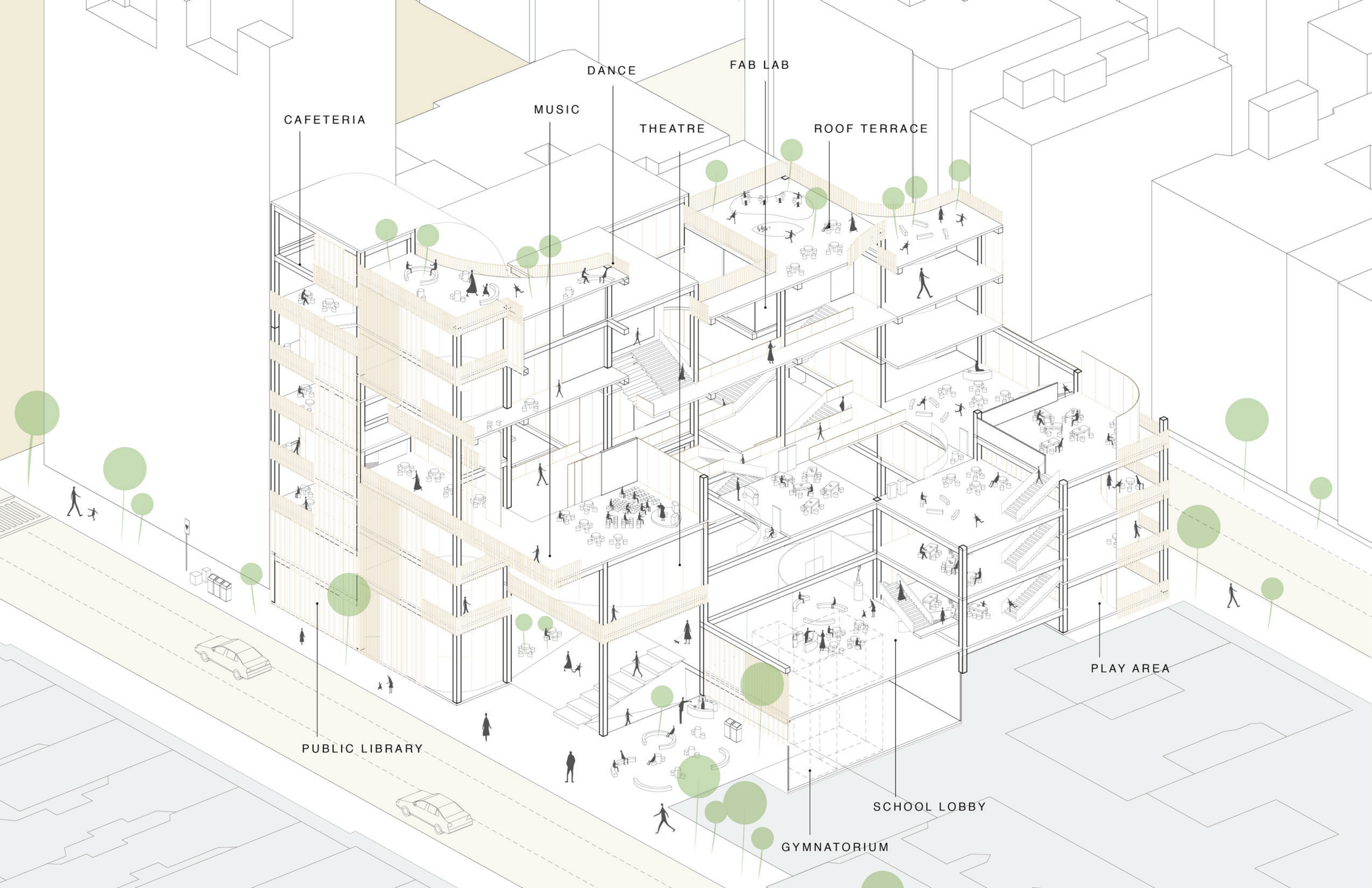


- CLASSROOMS
- COLLABORATIVE PLATFORMS

COLLABORATIVE SPACES







CAFETERIA

DANCE

FAB LAB

MUSIC

THEATRE

ROOF TERRACE

PUBLIC LIBRARY

SCHOOL LOBBY

GYMNASIUM

PLAY AREA

HOMEROOM



CLASSROOM

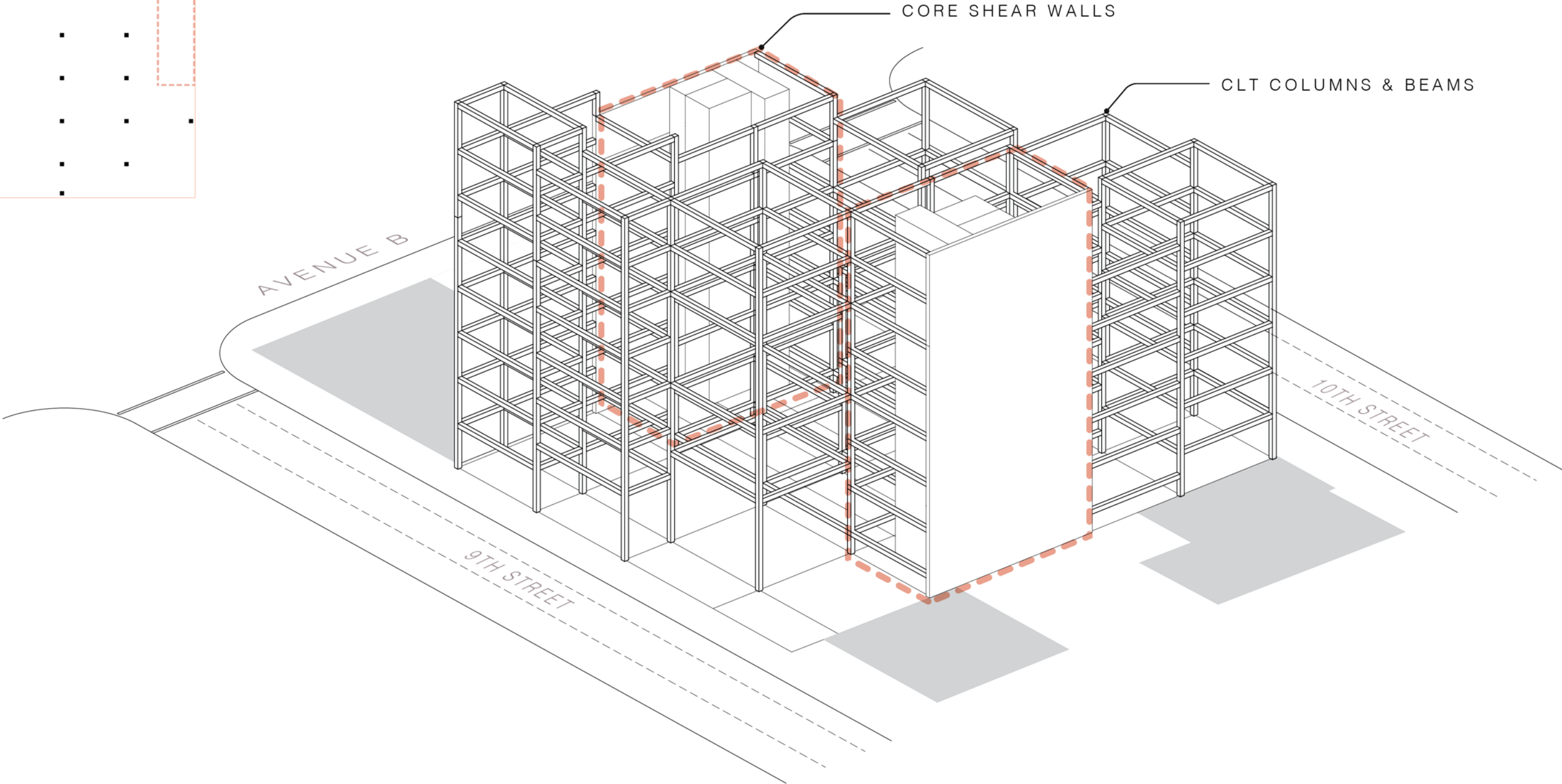
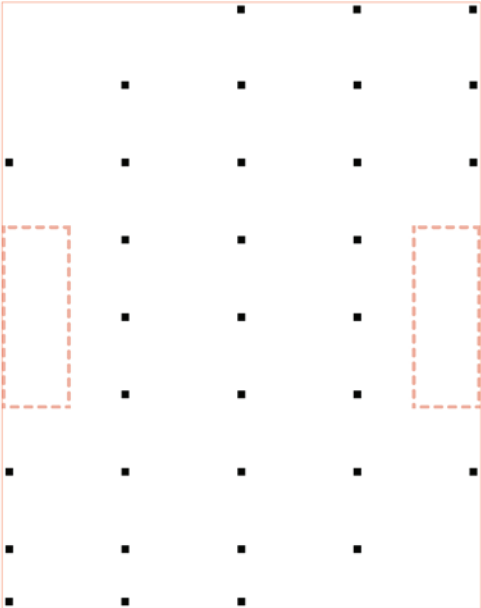


CLASSROOM SCENARIOS





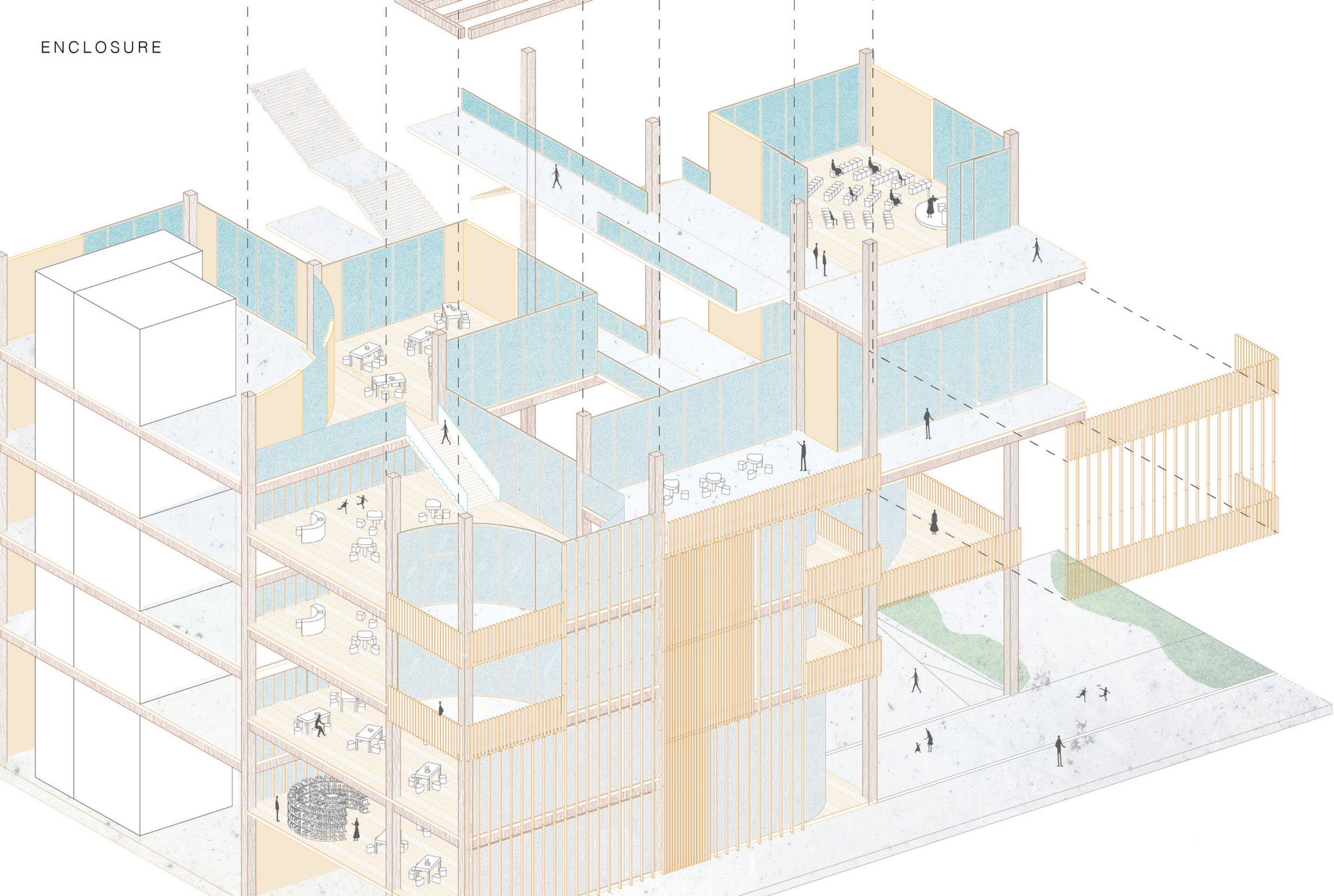
STRUCTURE



STRUCTURE MODEL

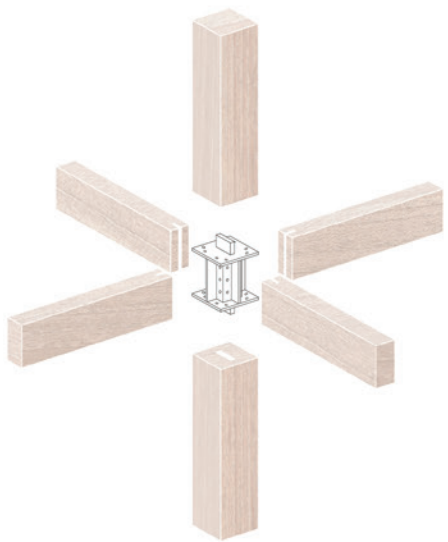
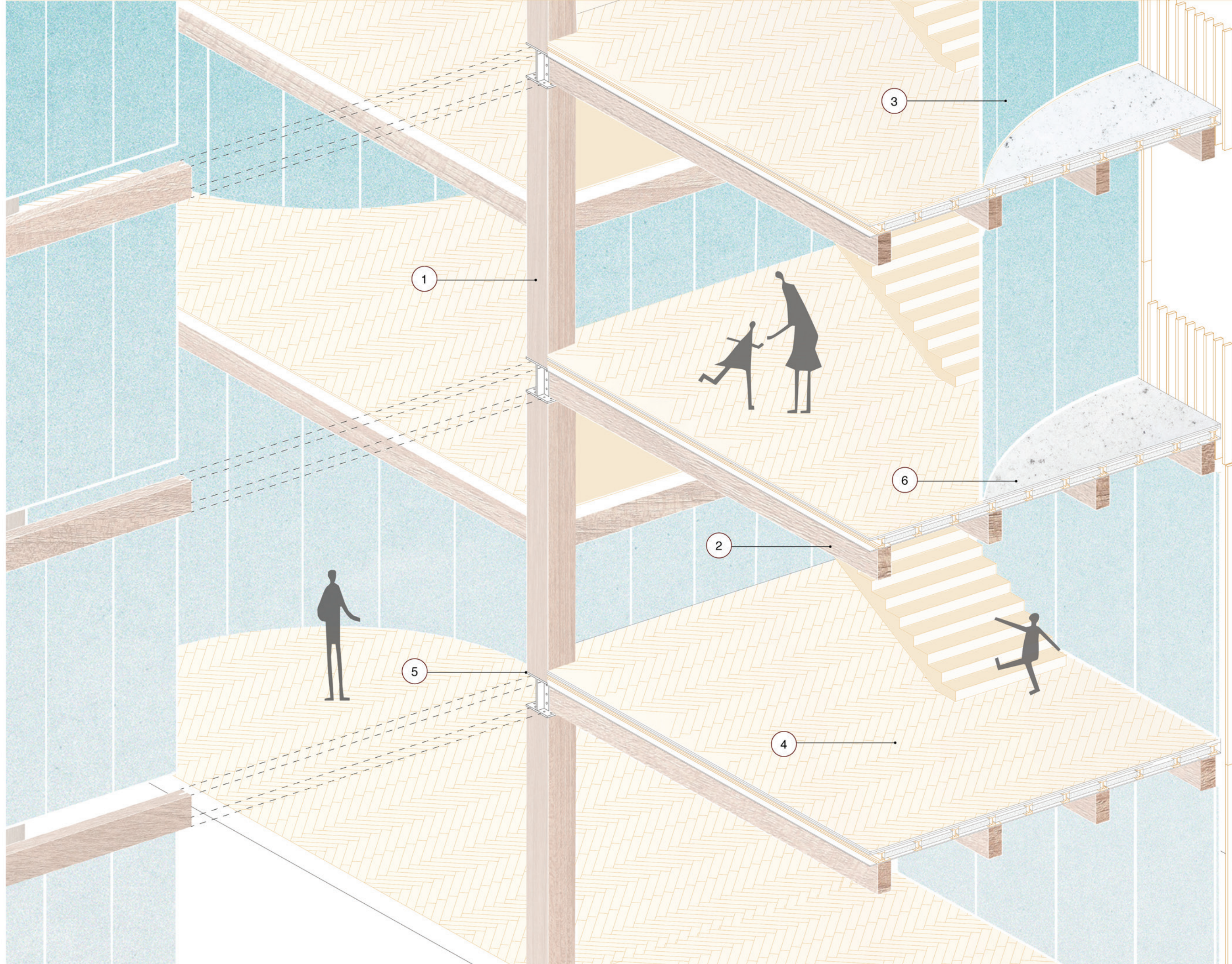


ENCLOSURE



# MATERIALS

- ① CLT COLUMNS
- ② CLT BEAMS
- ③ DOUBLE GLAZING
- ④ HERRINGBONE
- ⑤ STEEL CONNECTOR
- ⑥ CONCRETE



ELEVATION

