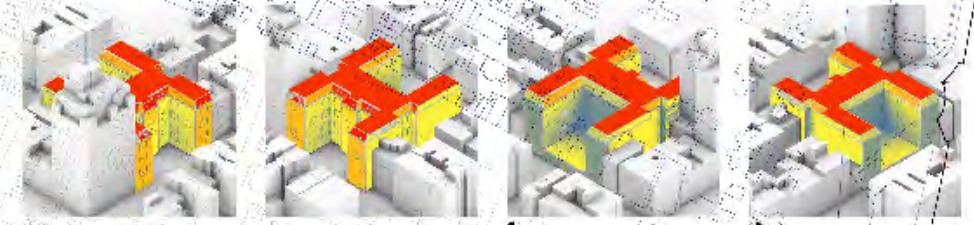
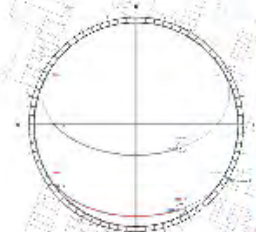
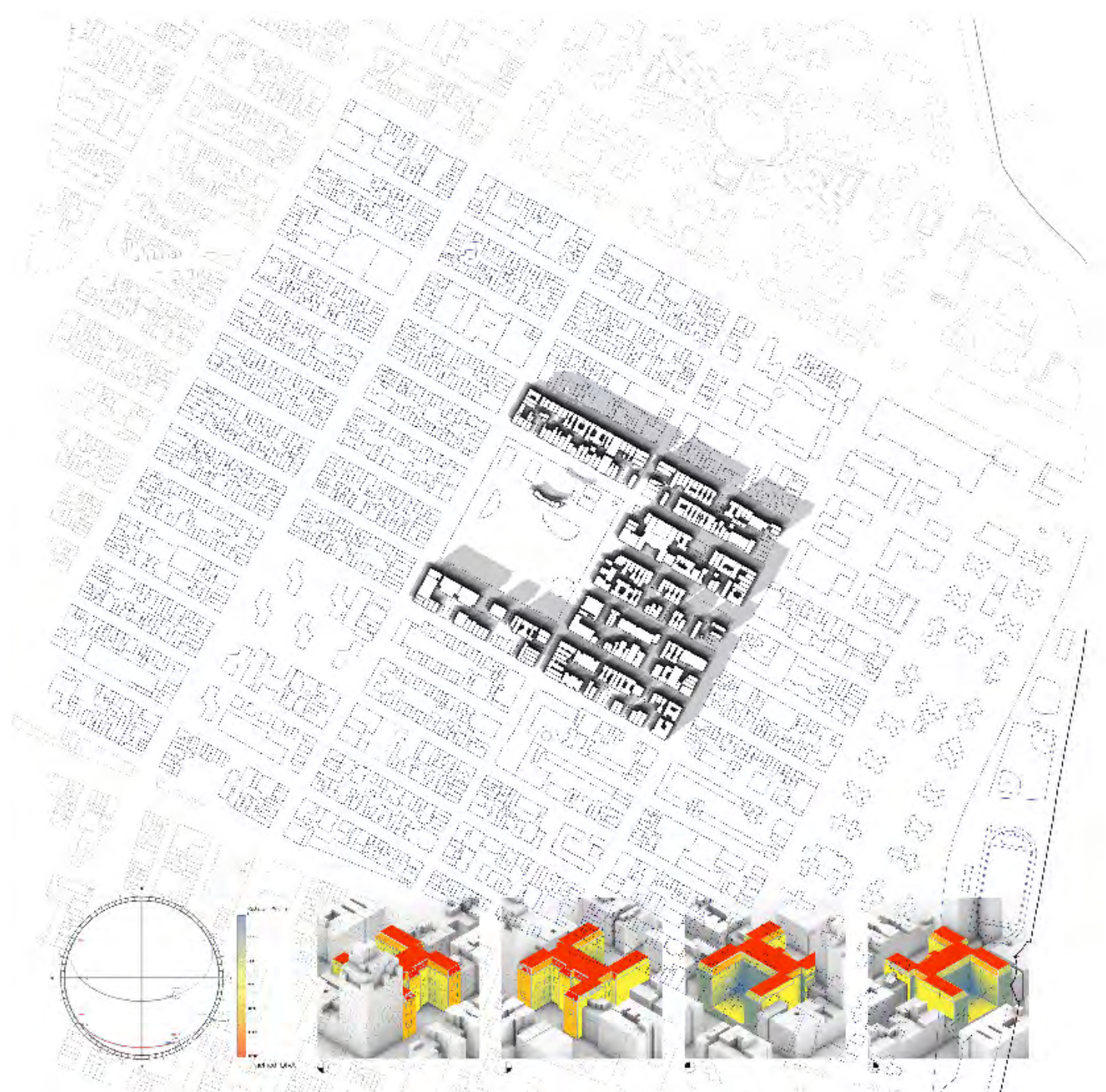




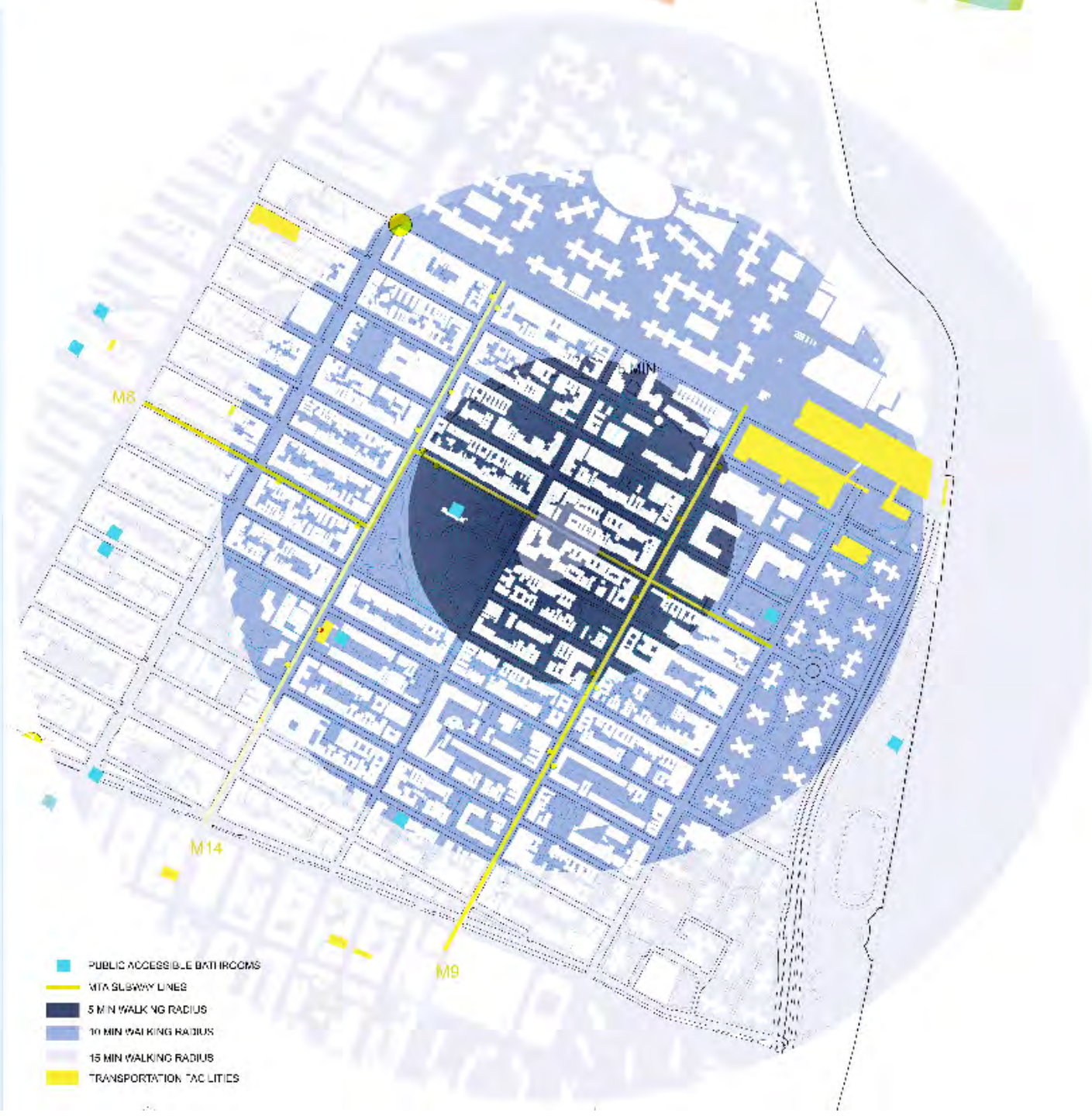
P.S. 64

THE OUTSIDER SCHOOL FOR THE PUBLIC BEYOND





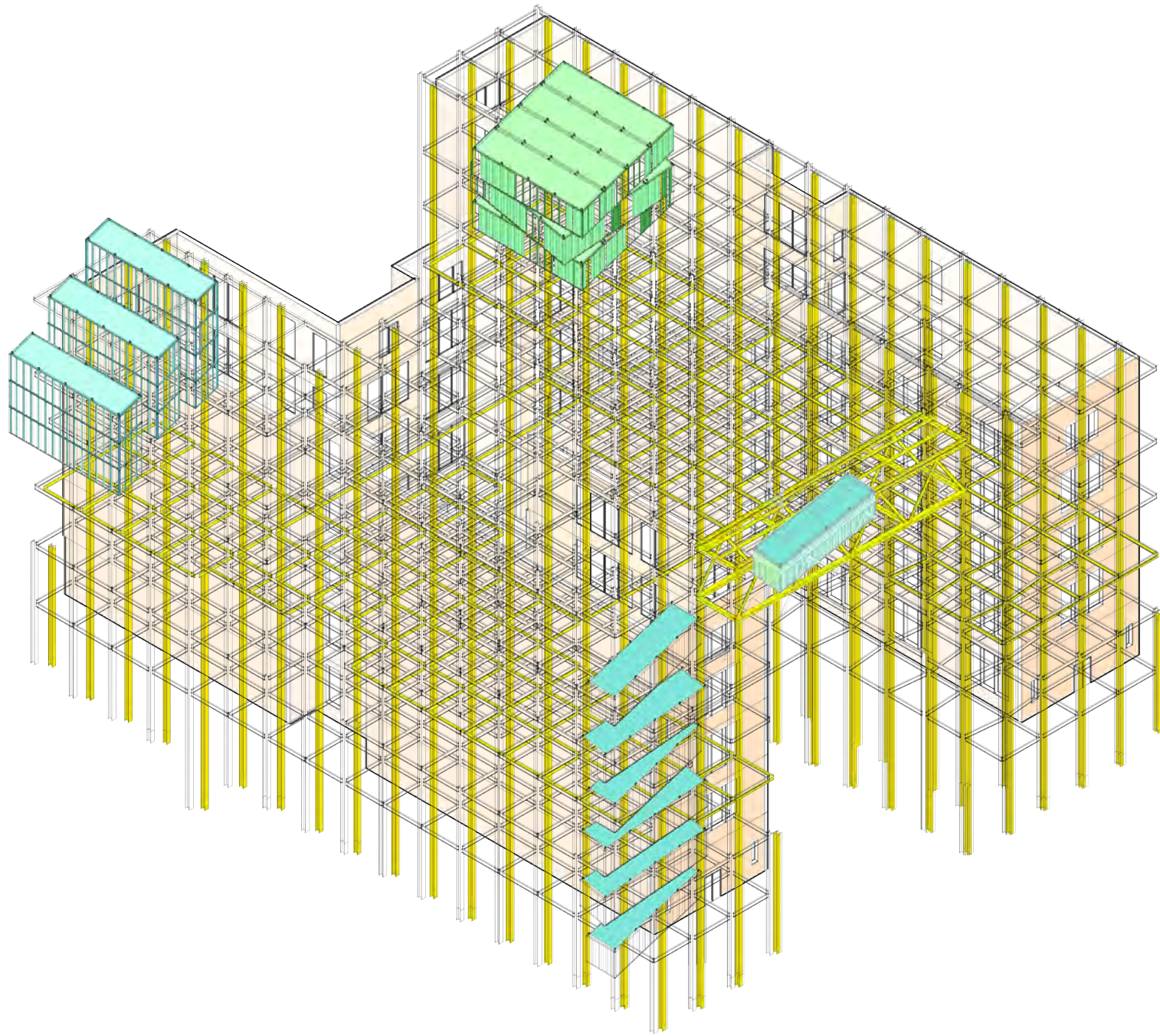
- PUBLIC PARKS
- COMMUNITY GARDENS
- CULTURAL/COMMUNITY SPACES
- PUBLIC SCHOOLS
- SOCIAL SERVICES
- SPORT CLUBS AND CENTERS
- OUTDOOR ACTIVITIES
- OUTDOOR STALLS
- PRIVATELY OWNED PUBLIC SPACES

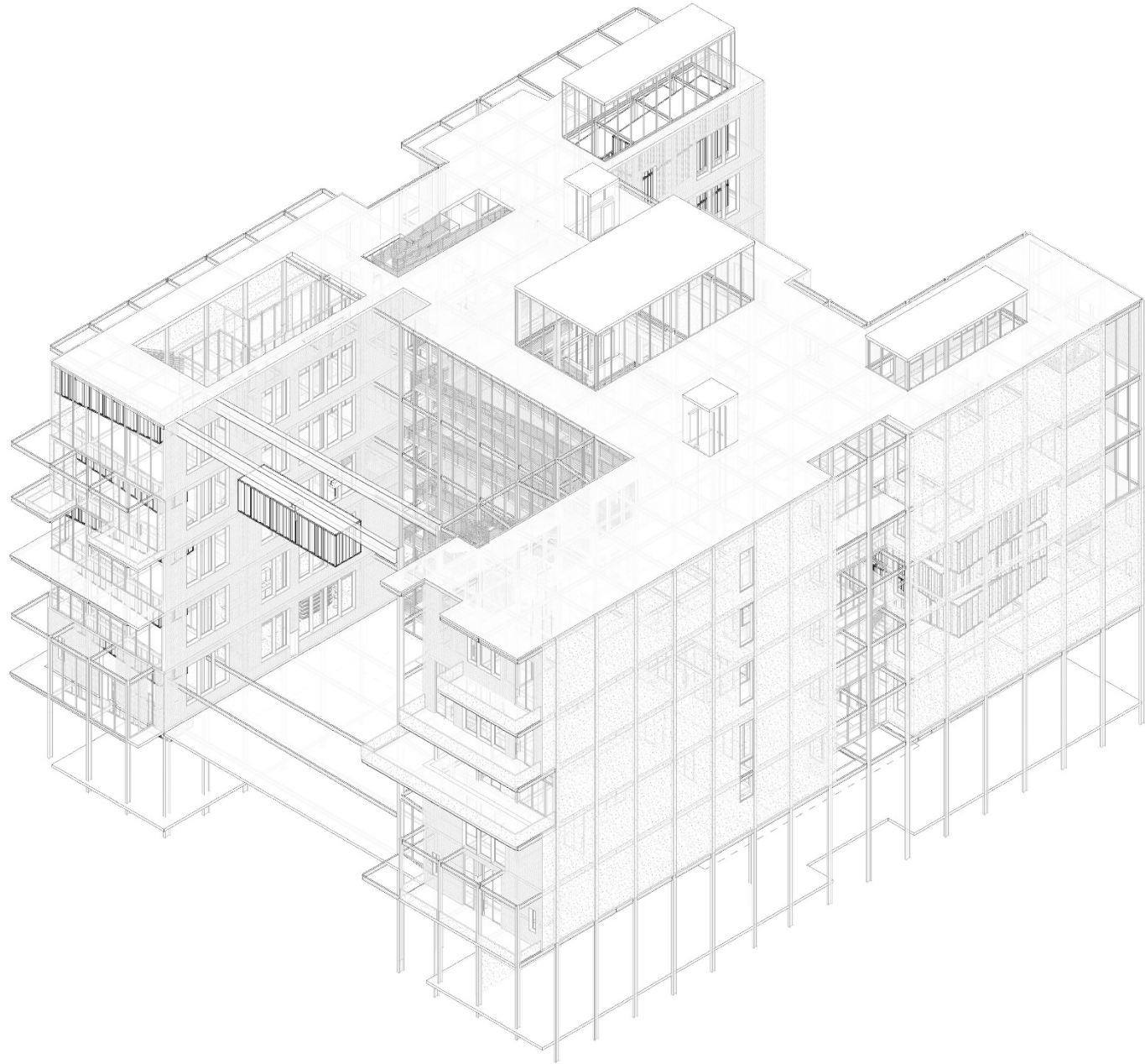


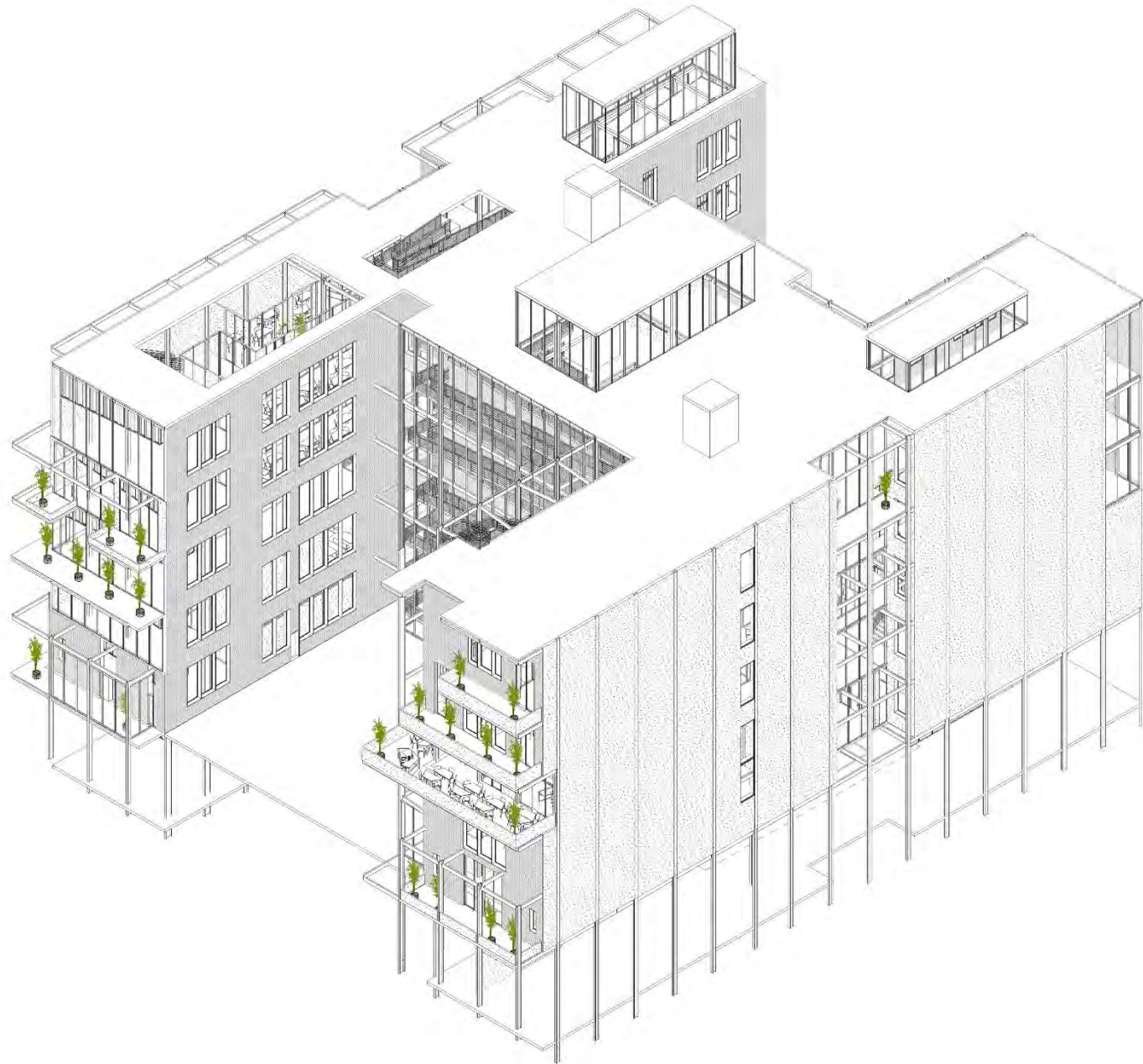
-  PUBLIC ACCESSIBLE BATHROOMS
-  MTA SUBWAY LINES
-  5 MIN WALKING RADIUS
-  10 MIN WALKING RADIUS
-  15 MIN WALKING RADIUS
-  TRANSPORTATION FACILITIES

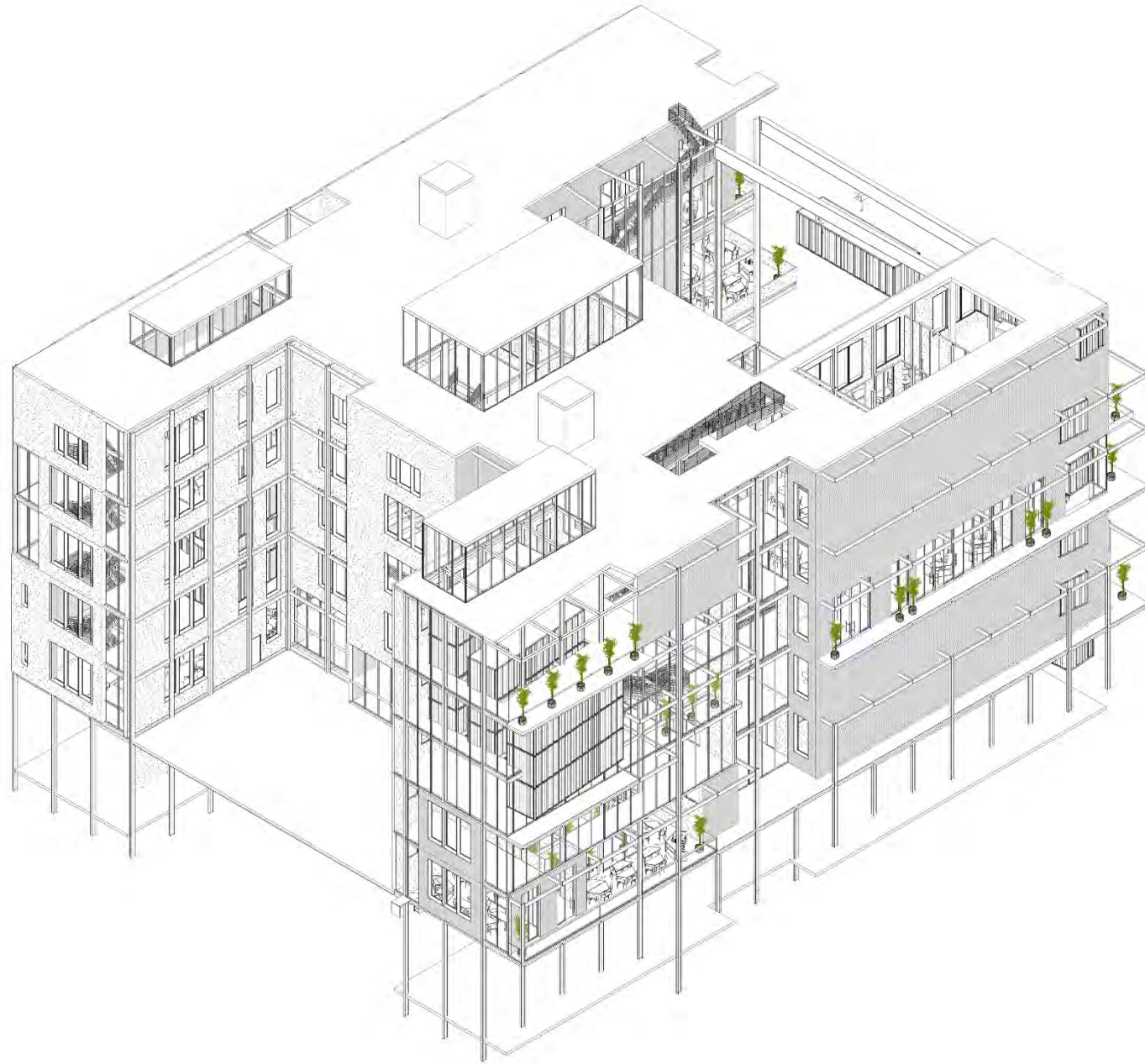


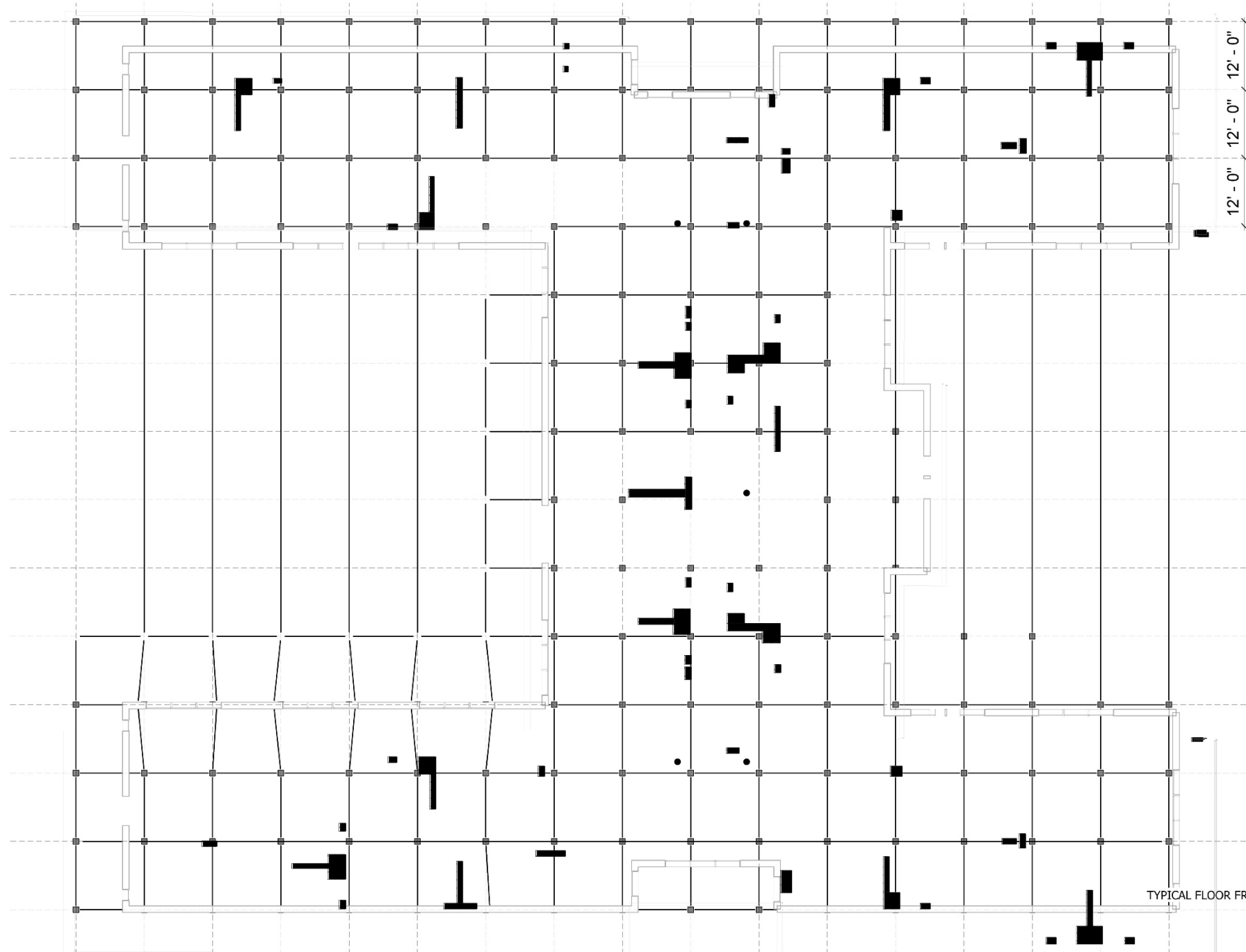
- PUBLIC PARKS
- COMMUNITY GARDENS
- OPEN SPACES
- VACANT LOT
- SURROUNDING BUILDINGS
- 1% ANNUAL CHANCE FLOODPLAIN
- 0.2% ANNUAL CHANCE FLOODPLAIN







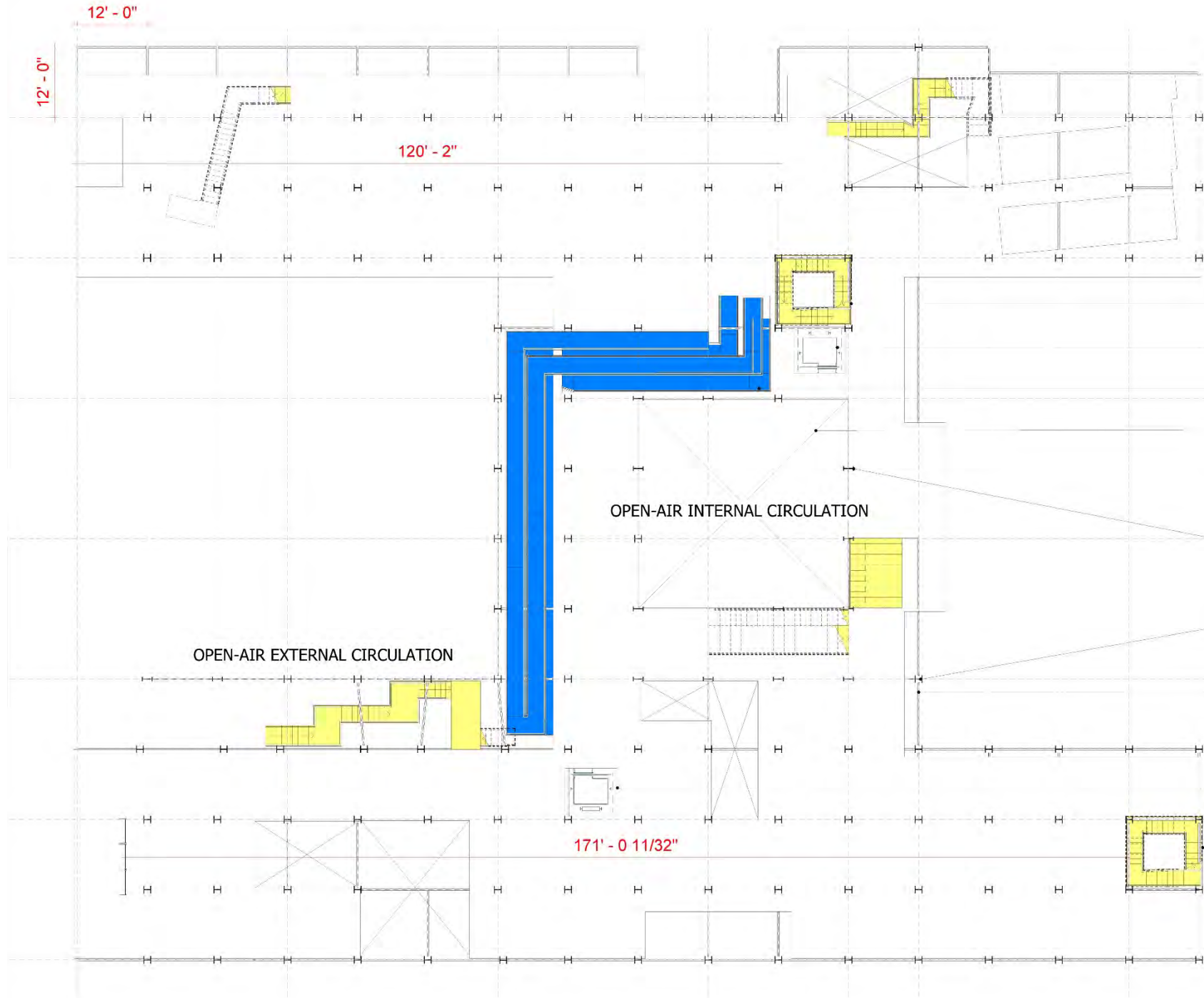




12' - 0"
12' - 0"
12' - 0"



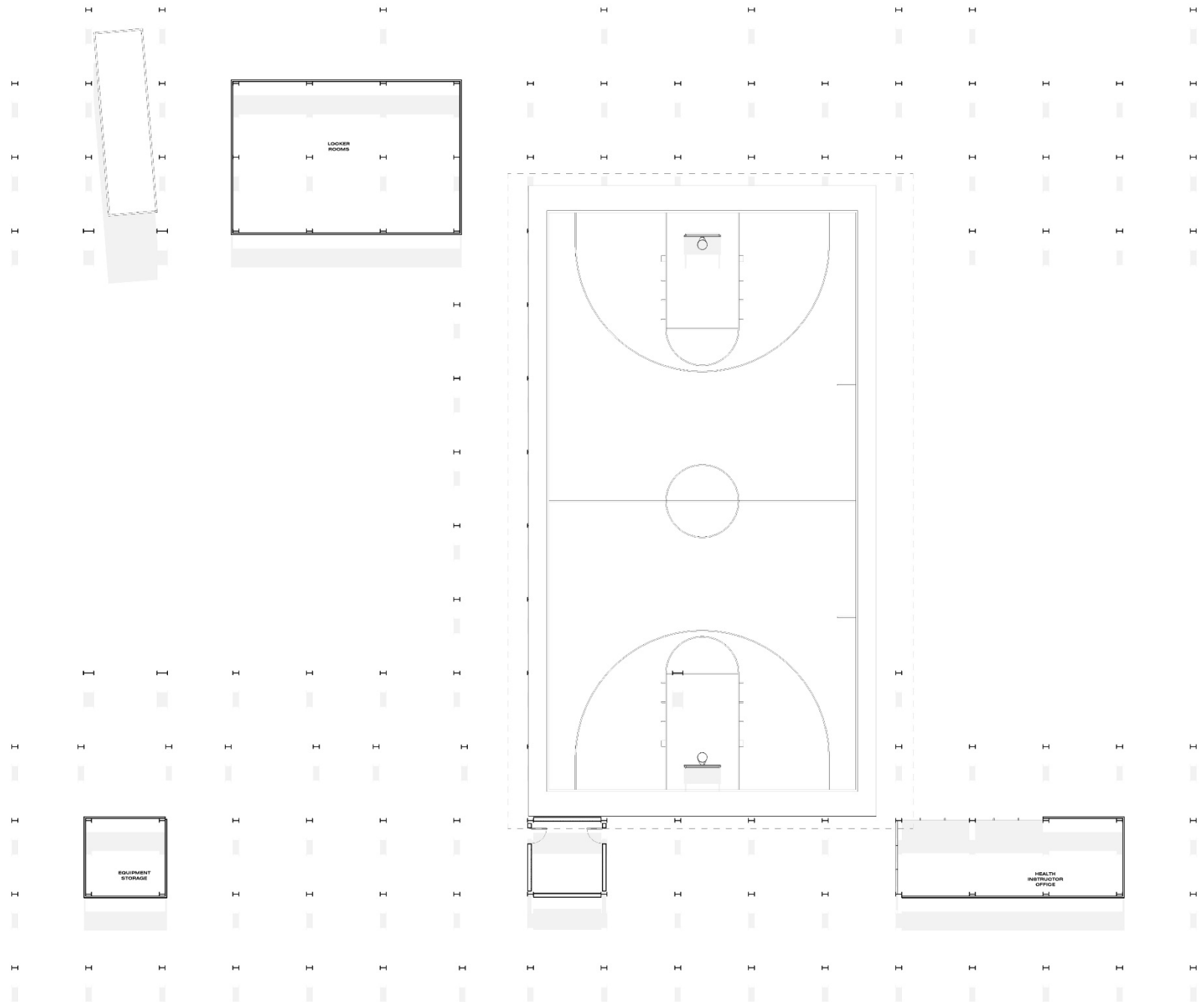
TYPICAL FLOOR FRAMING PLAN (PROPOSED)
1/8" = 1'



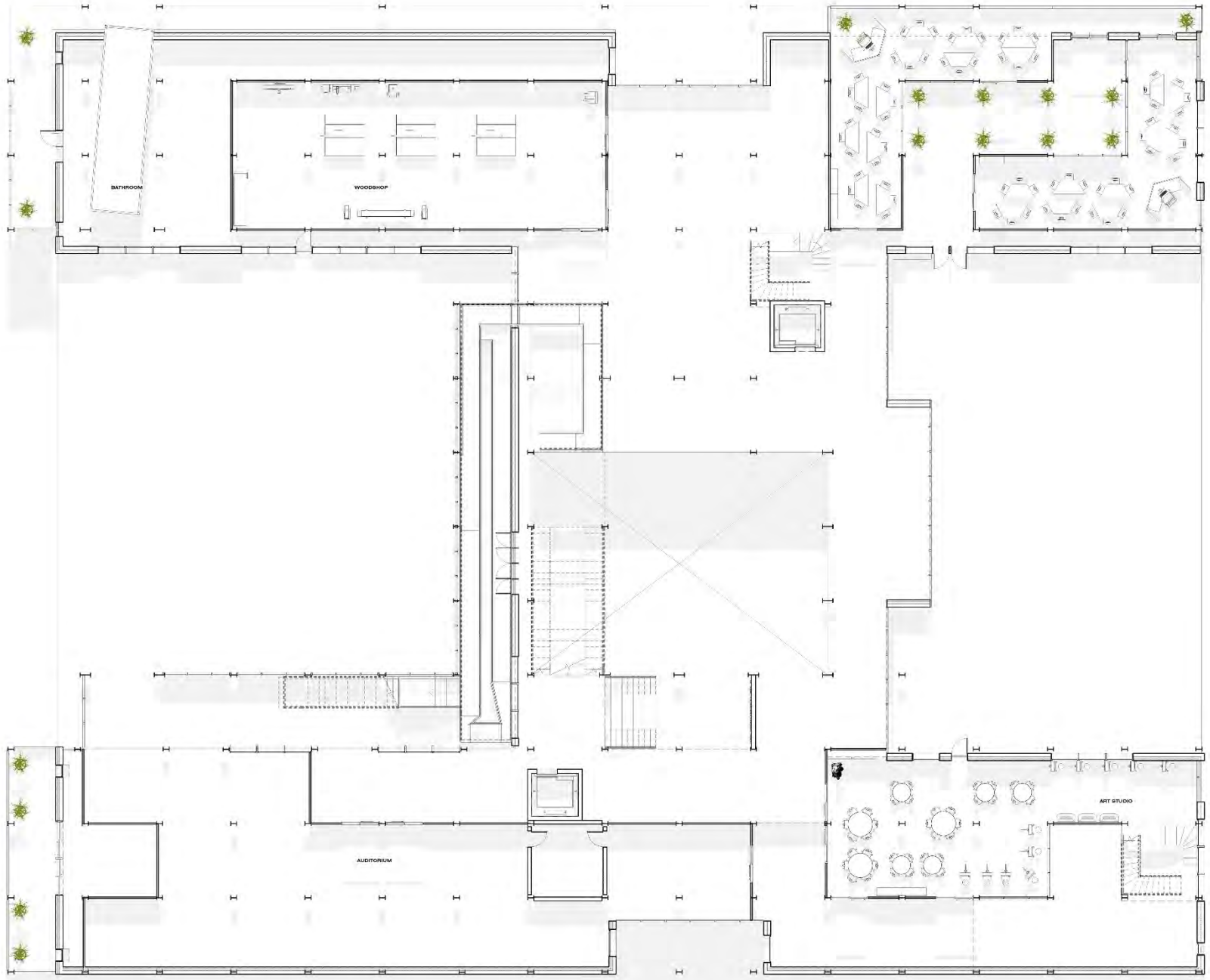
FLOOR LEVEL 4:
 13,615.18 sqft total, 100sqft/occupant (daycare standards in NY dictate at least 75sqft/child). Total occupancy load of 136.

There are two egress stairs on both East and West wings of the building, accompanied by a multitude of non-fire rated primary and secondary circulation. It appears a third egress stair is necessary to reduce the farthest walking distance to an exit. Stairs need to be 70" wide, TYP.

- 1H-FIRE RATED EGRESS STAIRS
- ELEVATOR CORE
- PRIMARY ADA RAMP
- VOID CUTOUTS IN FLOORPLATE
- W29X48 STEEL COLUMN, INSERTED IN 12' STRUCTURAL GRID
- W14X92 EXTERNAL STEEL COLUMNS
- W12X14 STEEL WIDE FLANGE FRAMING FOR PRIMARY GIRDERS AND BEAMS
- ELEVATOR CORE
- 1H-FIRE RATED EGRESS STAIRS



FLOOR PLAN BASEMENT LEVEL
1/8" = 1'



FLOOR PLAN BASEMENT LEVEL
1/8" = 1'



FLOOR PLAN GROUND LEVEL
1/8" = 1'



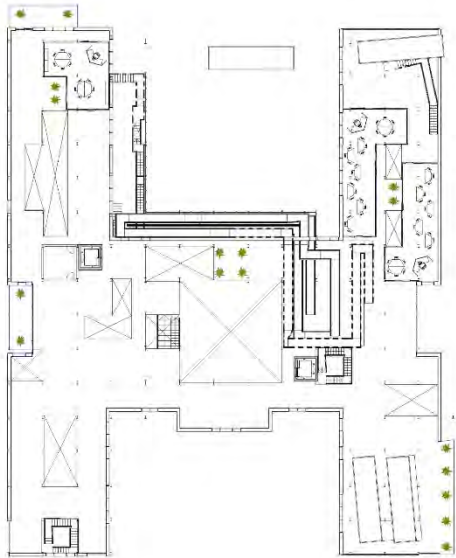
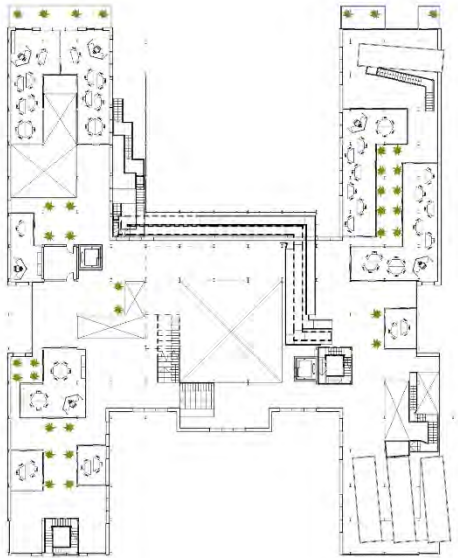
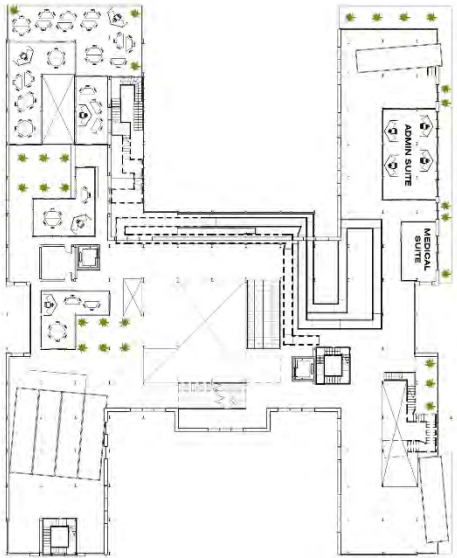
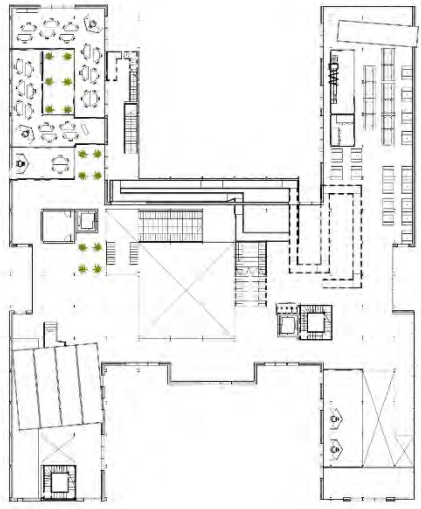
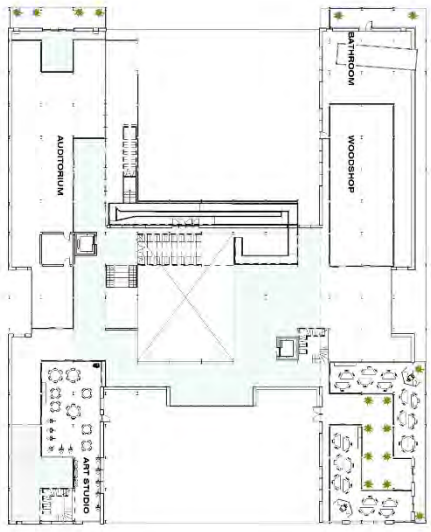
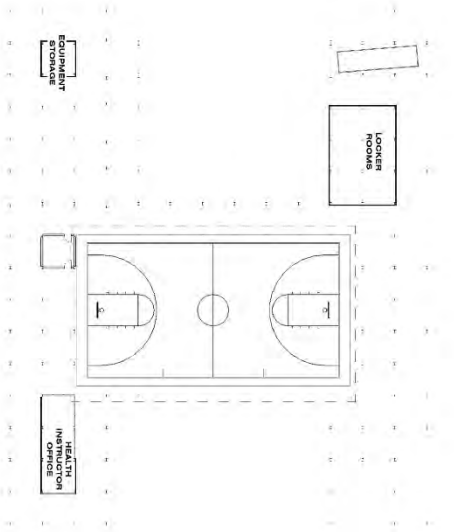
FLOOR PLAN FIRST FLOOR
1/8" = 1'



FLOOR PLAN THIRD FLOOR
1/8" = 1'

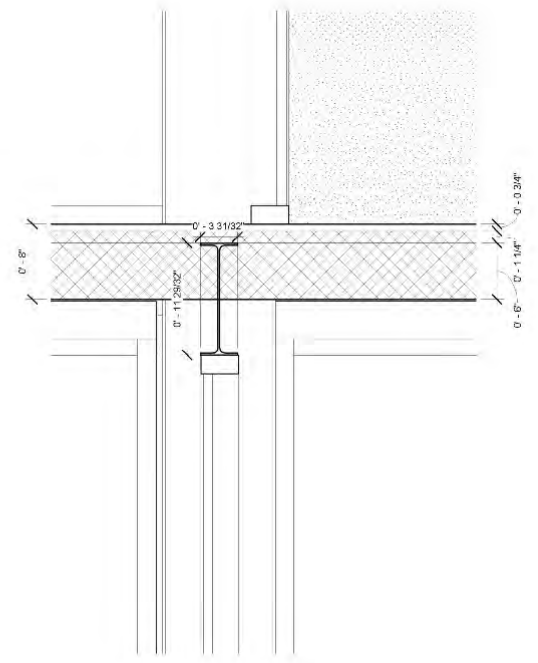


FLOOR PLAN FOURTH FLOOR
1/8" = 1'





SECTION VIEW 1/8" = 1'



DETAIL VIEW 1 1/2" = 1'

