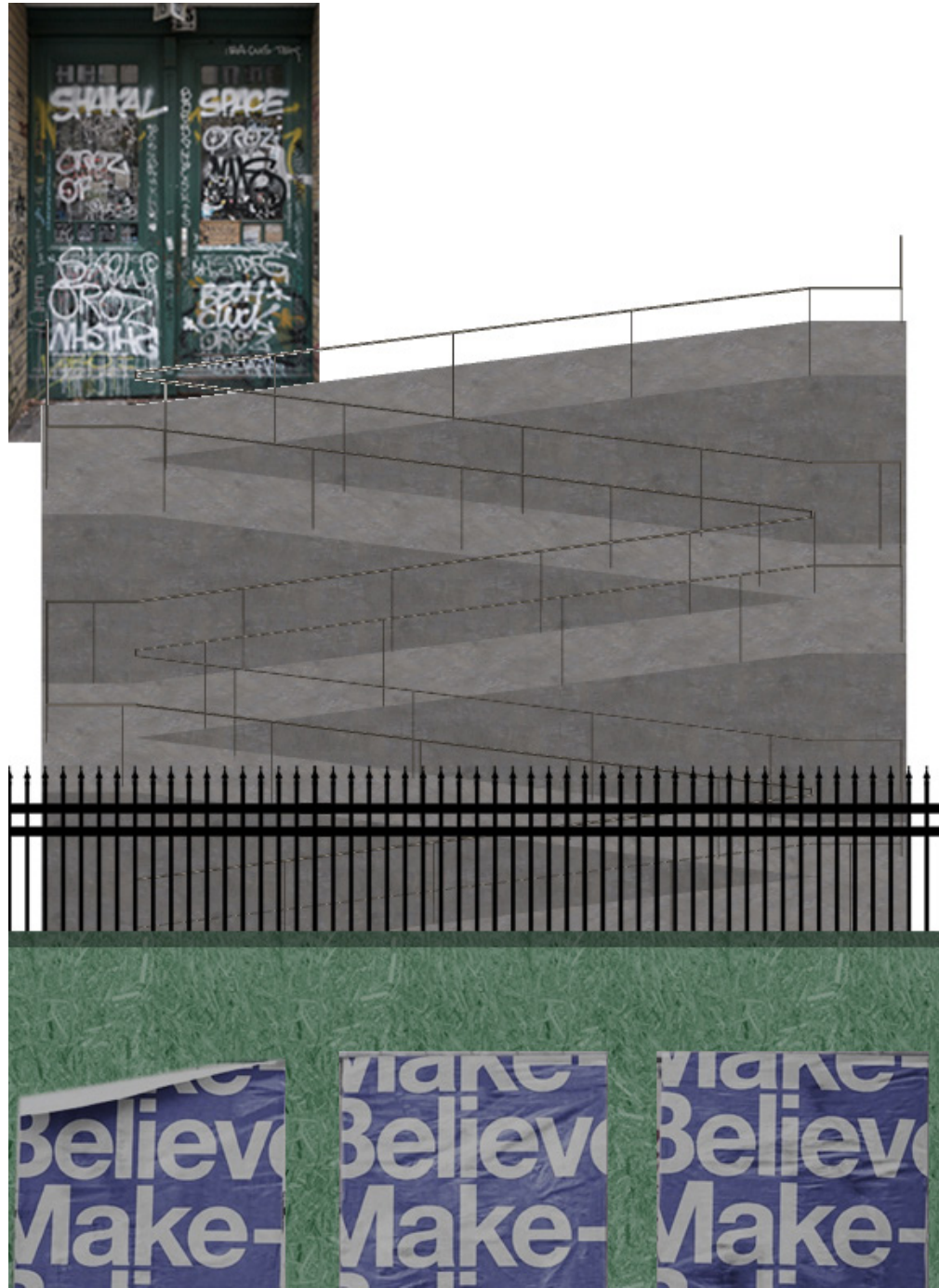




JOYCE ZHOU

CORE II SPRING 2020



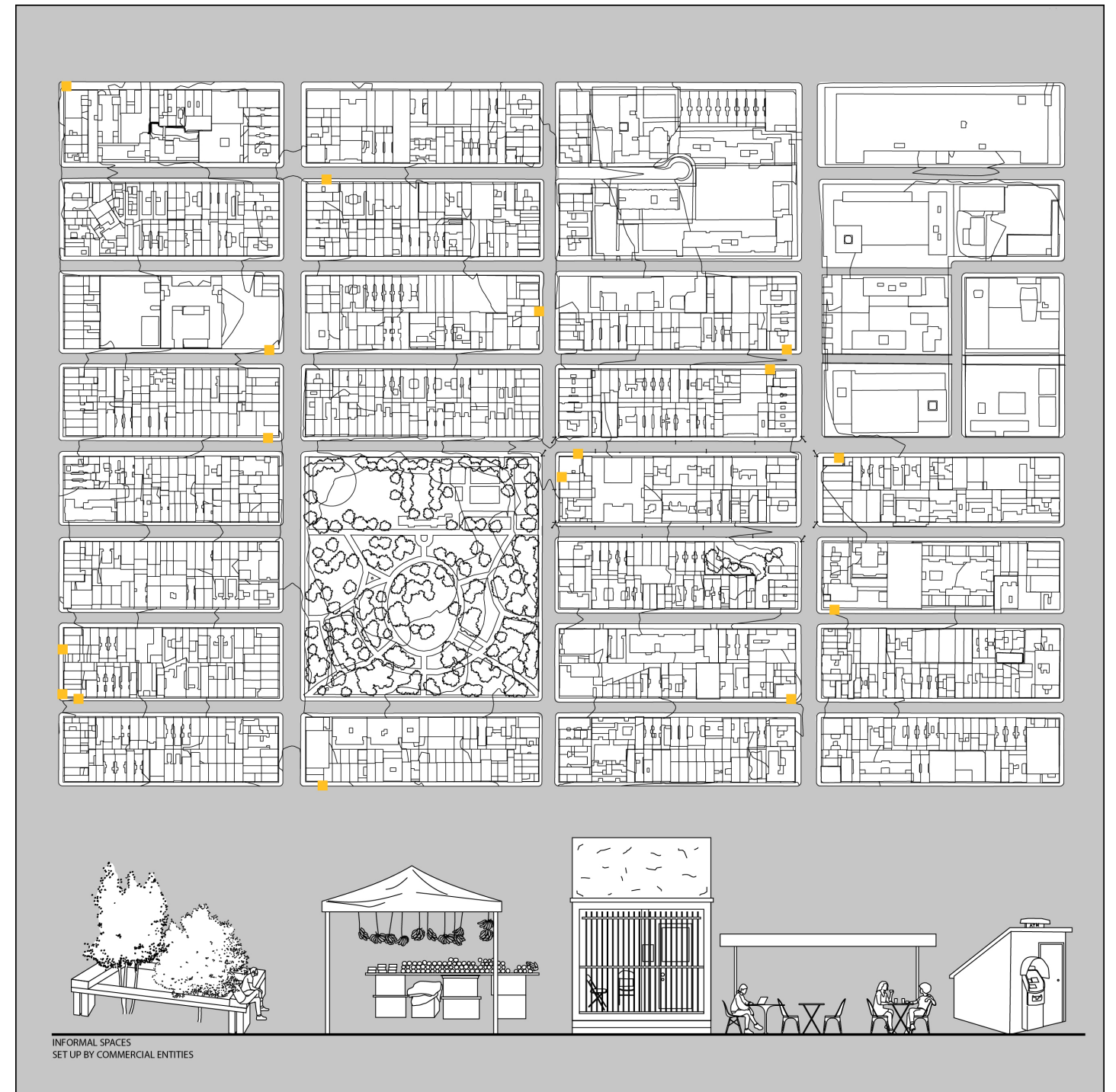
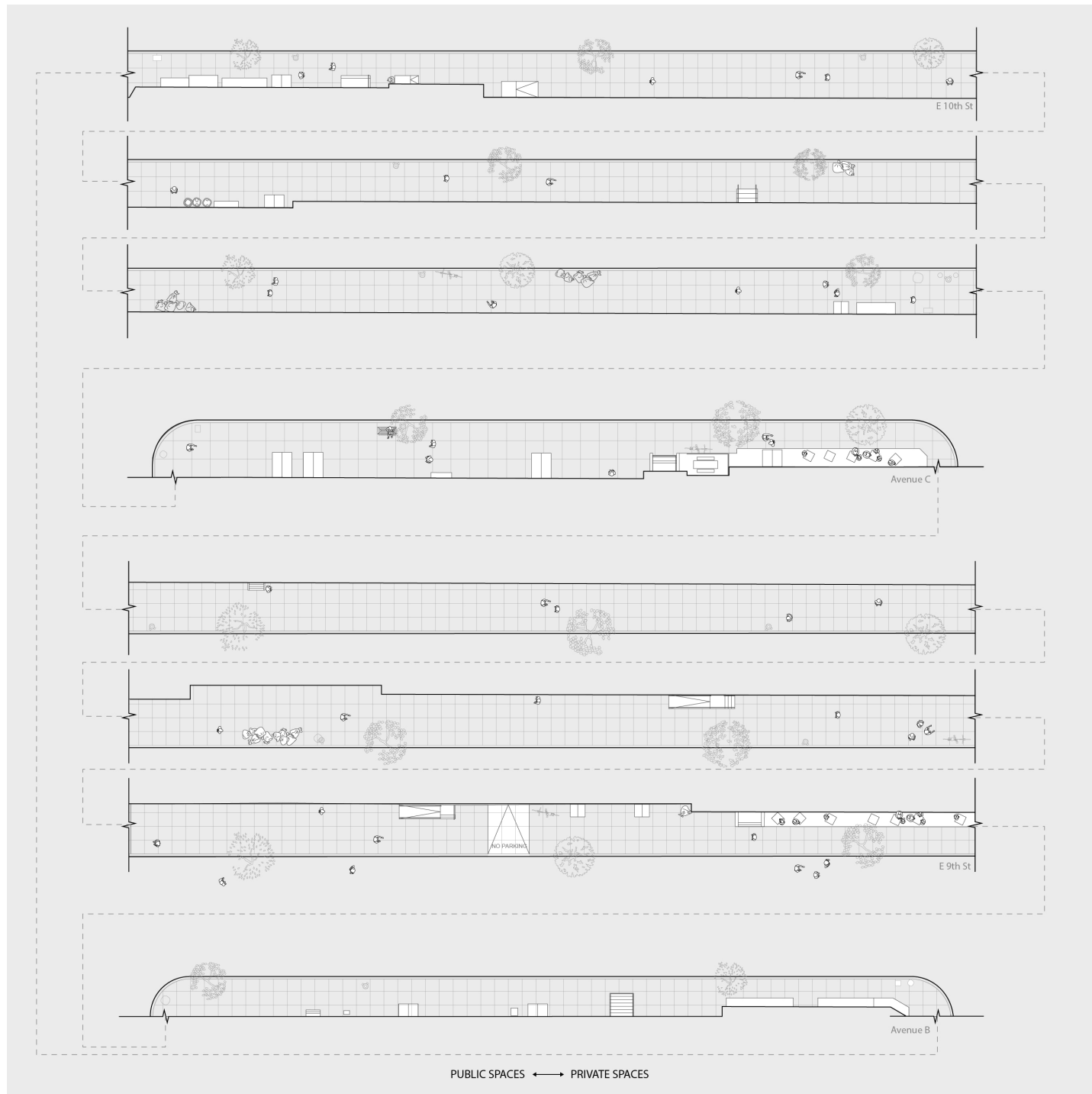
PS64, in its current state, enforces a notable distinction between the physical and visual access points into the site. The deletion of key areas of the original school—selected due to their unfavorable lighting—aims to create a new ground condition that becomes a physical and experiential continuation of the city, shared with the school.

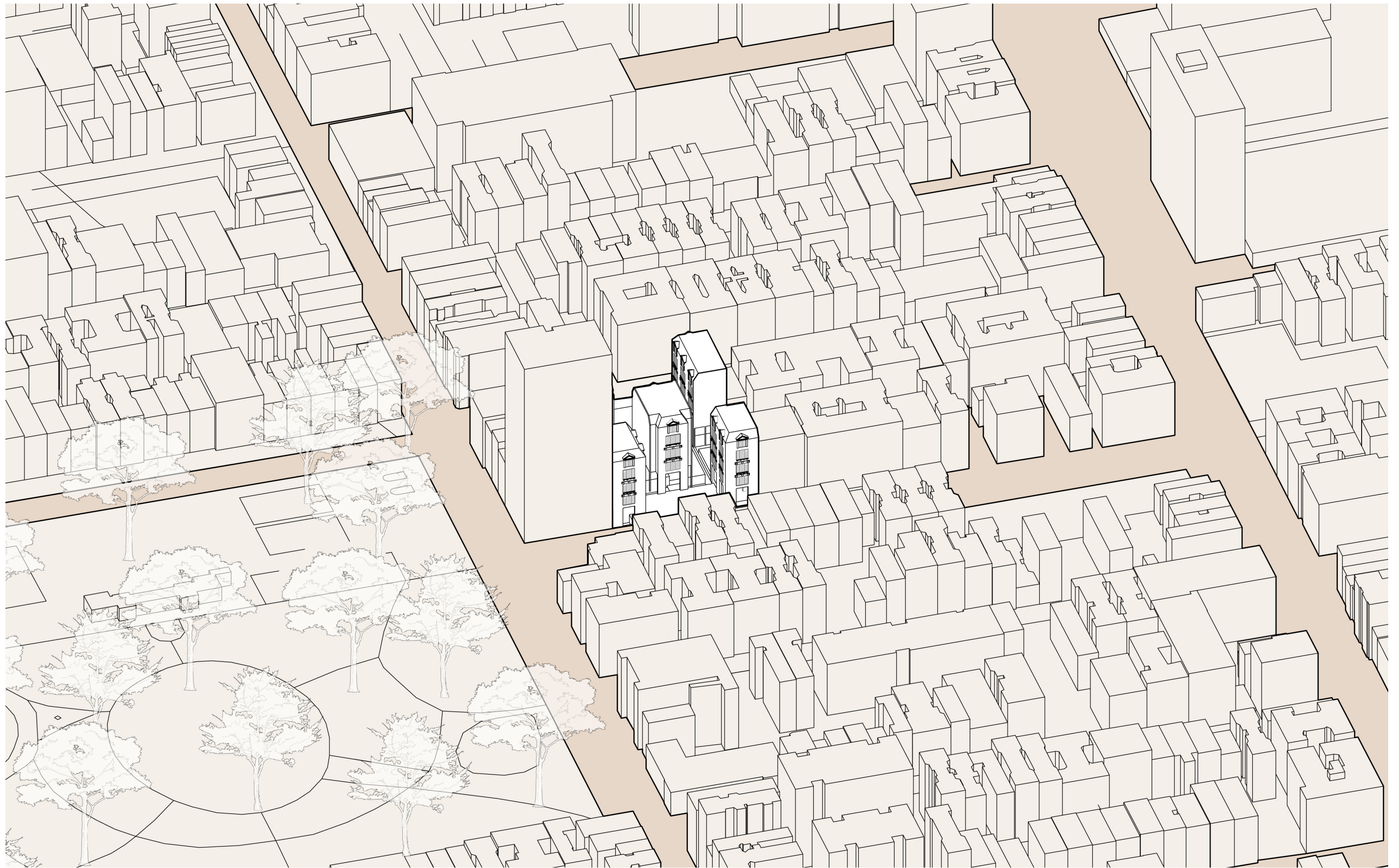
The ground level of the building is fully accessible to the public as a space that hosts programs catered towards the city. Embedded underground are the school's shared spaces, such as the library, gym and cafeteria. Also visually connected to the ground floor at varying levels, they can be used by the public during non-school hours.

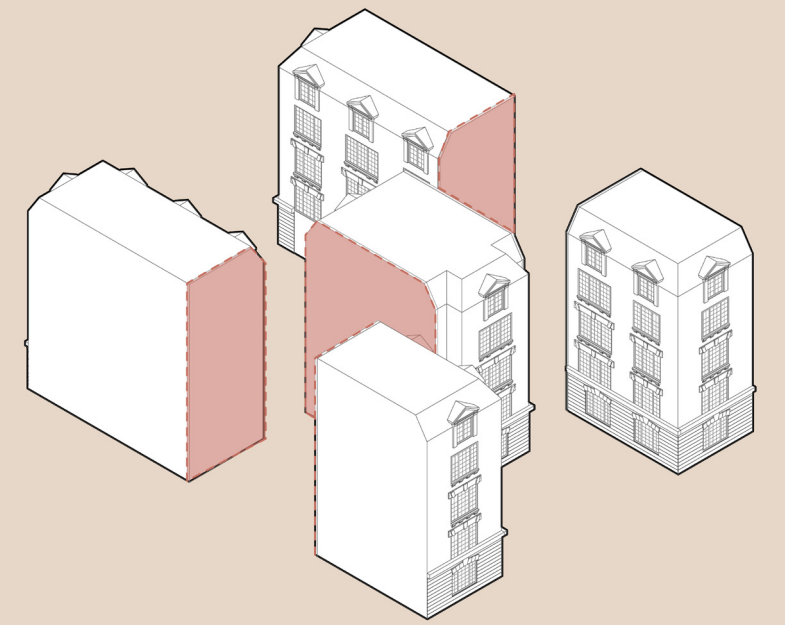
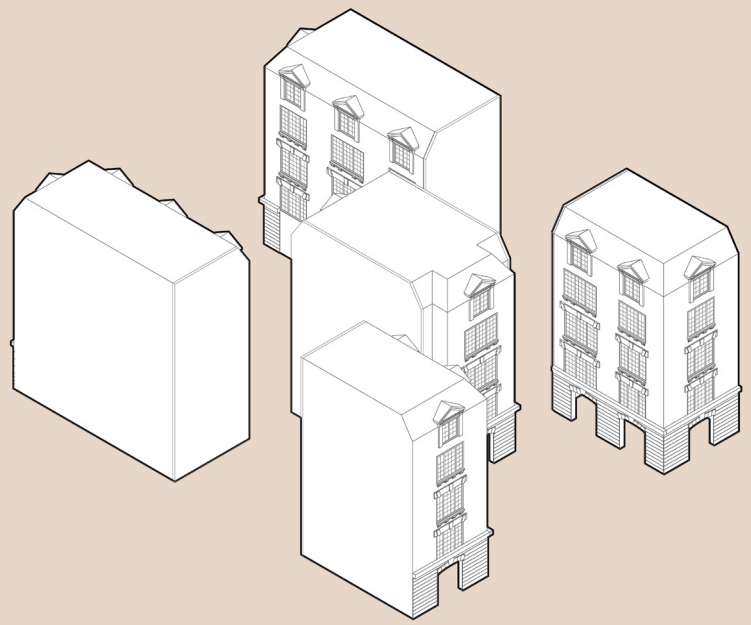
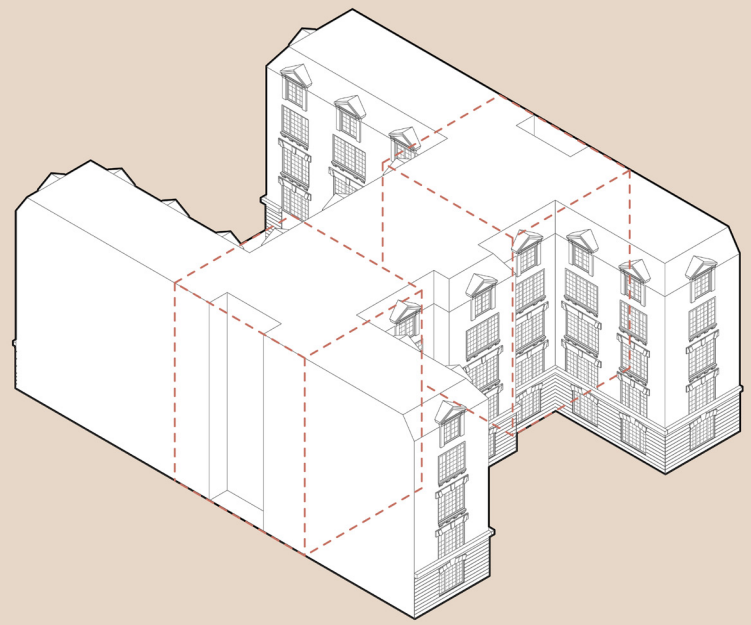
What is left of the H-block is now five towers—one at each corner of the site and one in the middle. The towers have the shell of the existing building while the ends that were created after deletion are then capped with new facades that now highlight the new pocket courtyards. This allows for a visual connection not only between the students of different towers, but also with the city on the ground floor. This visual connection between the school and the city is key to maintaining a strong link between figure and ground; school and city.

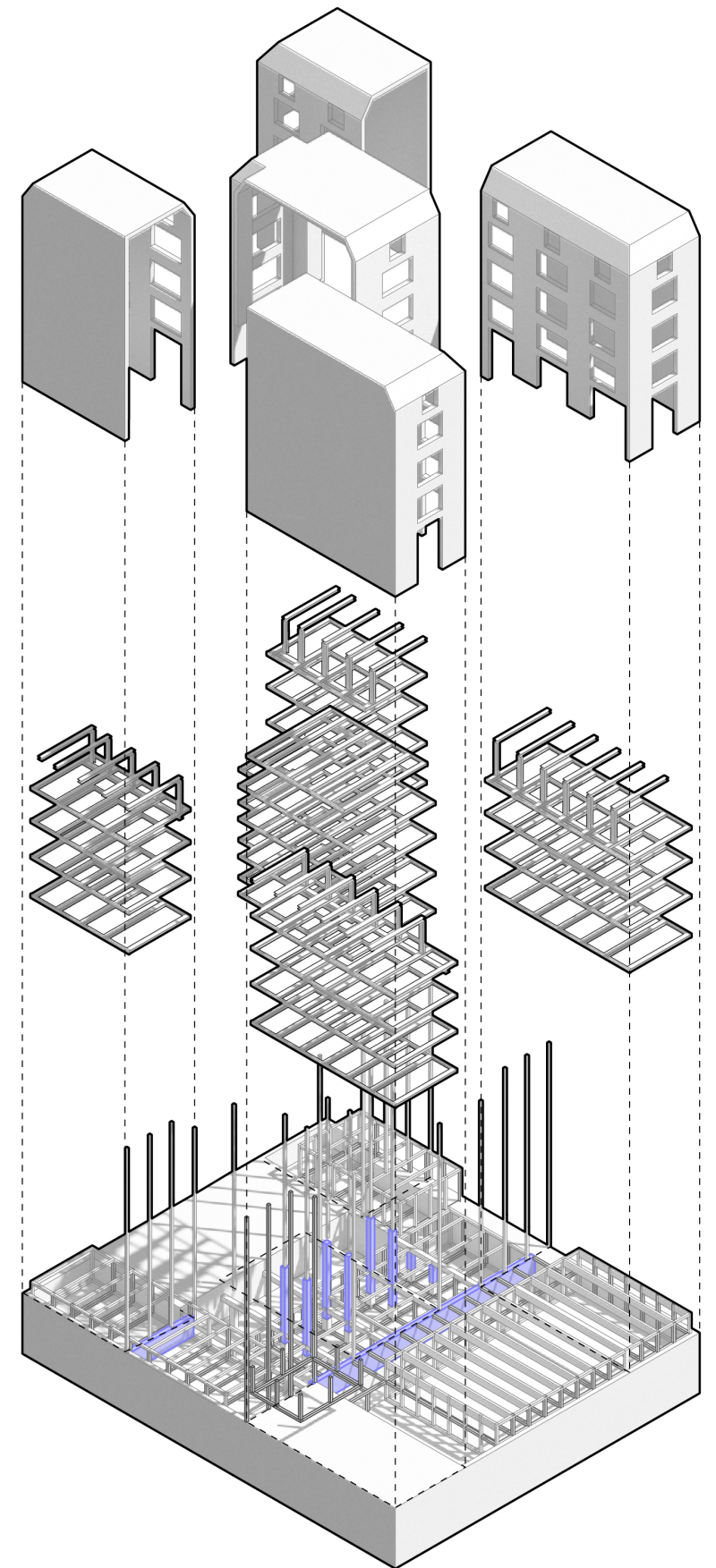
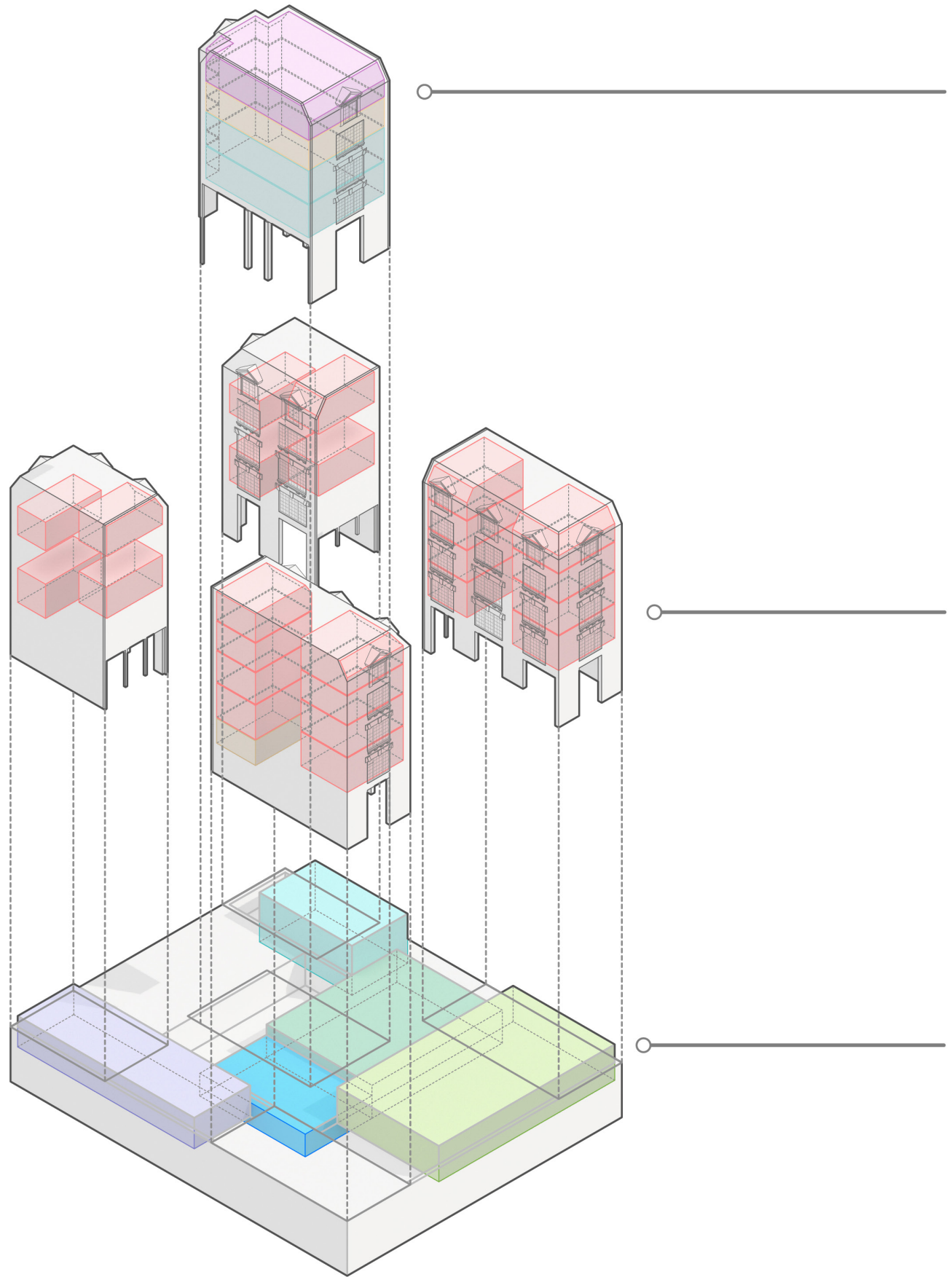


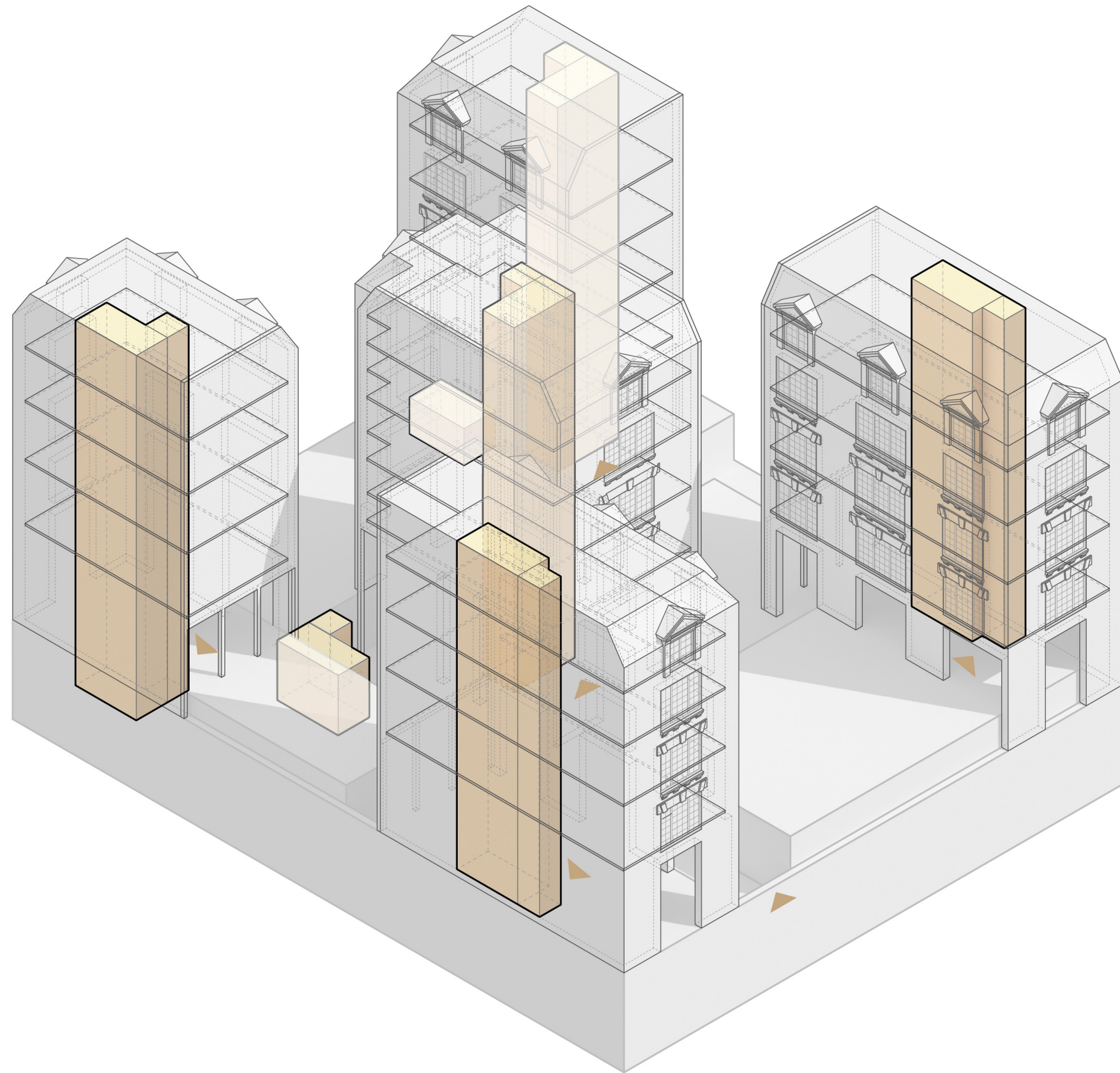


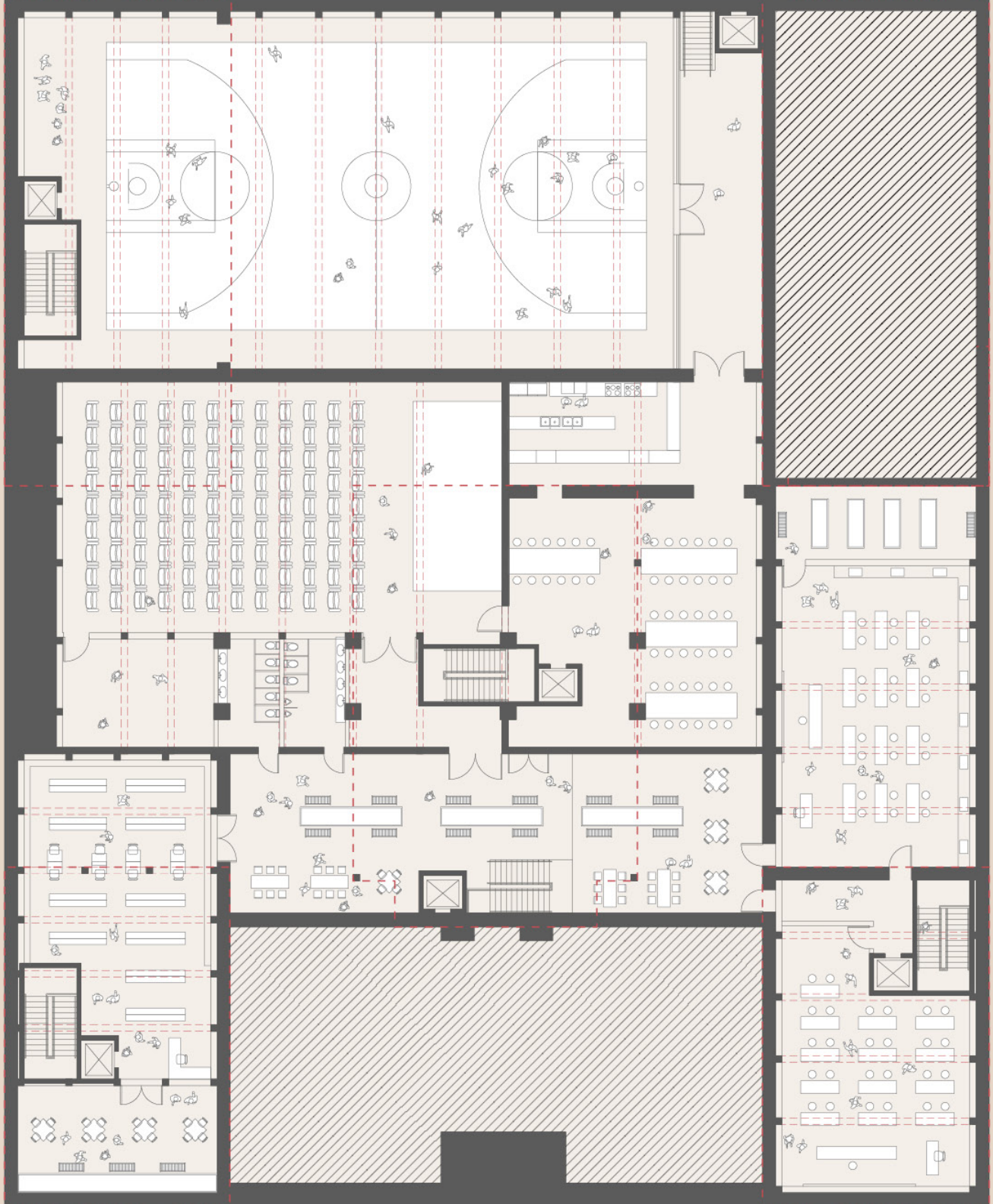




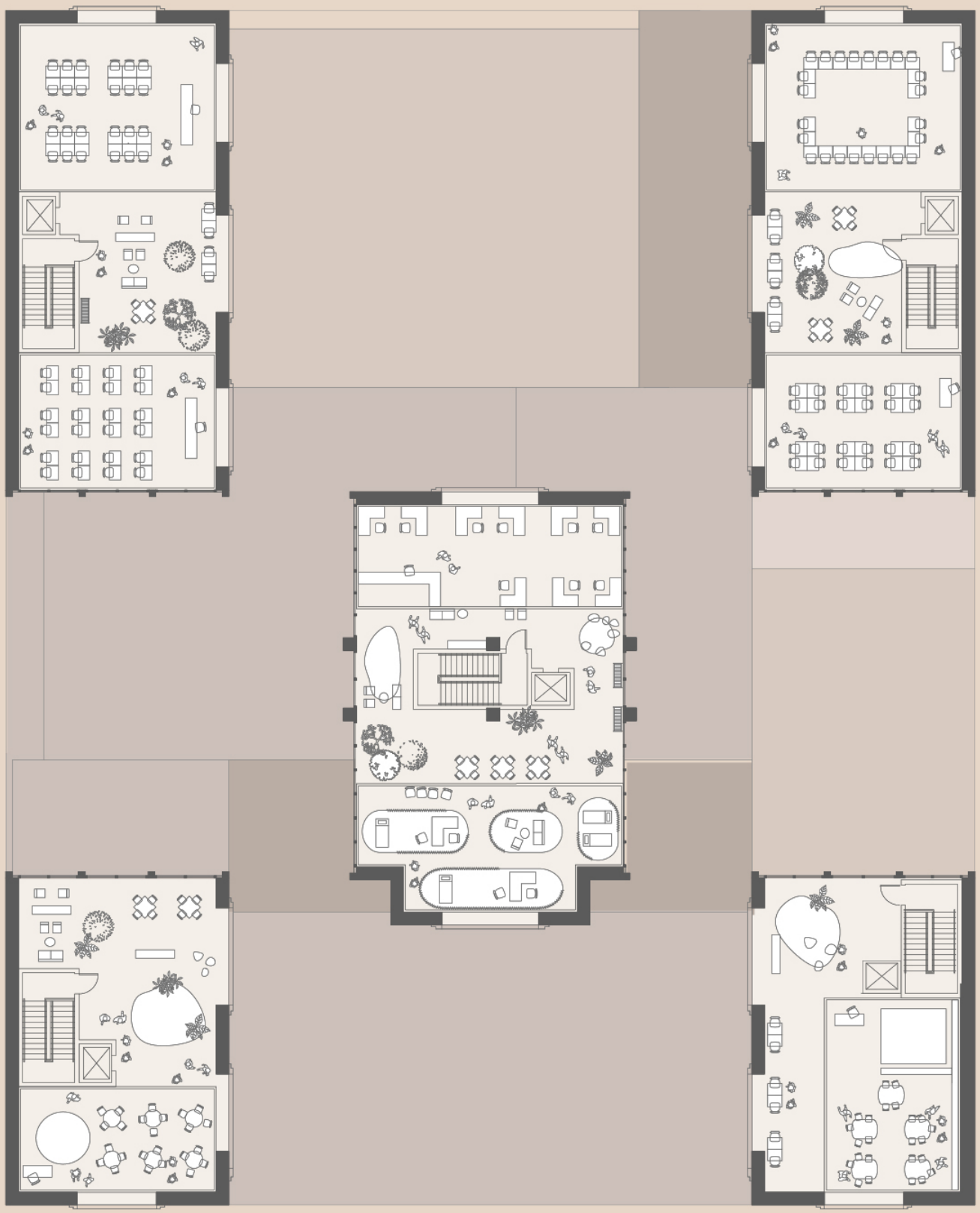




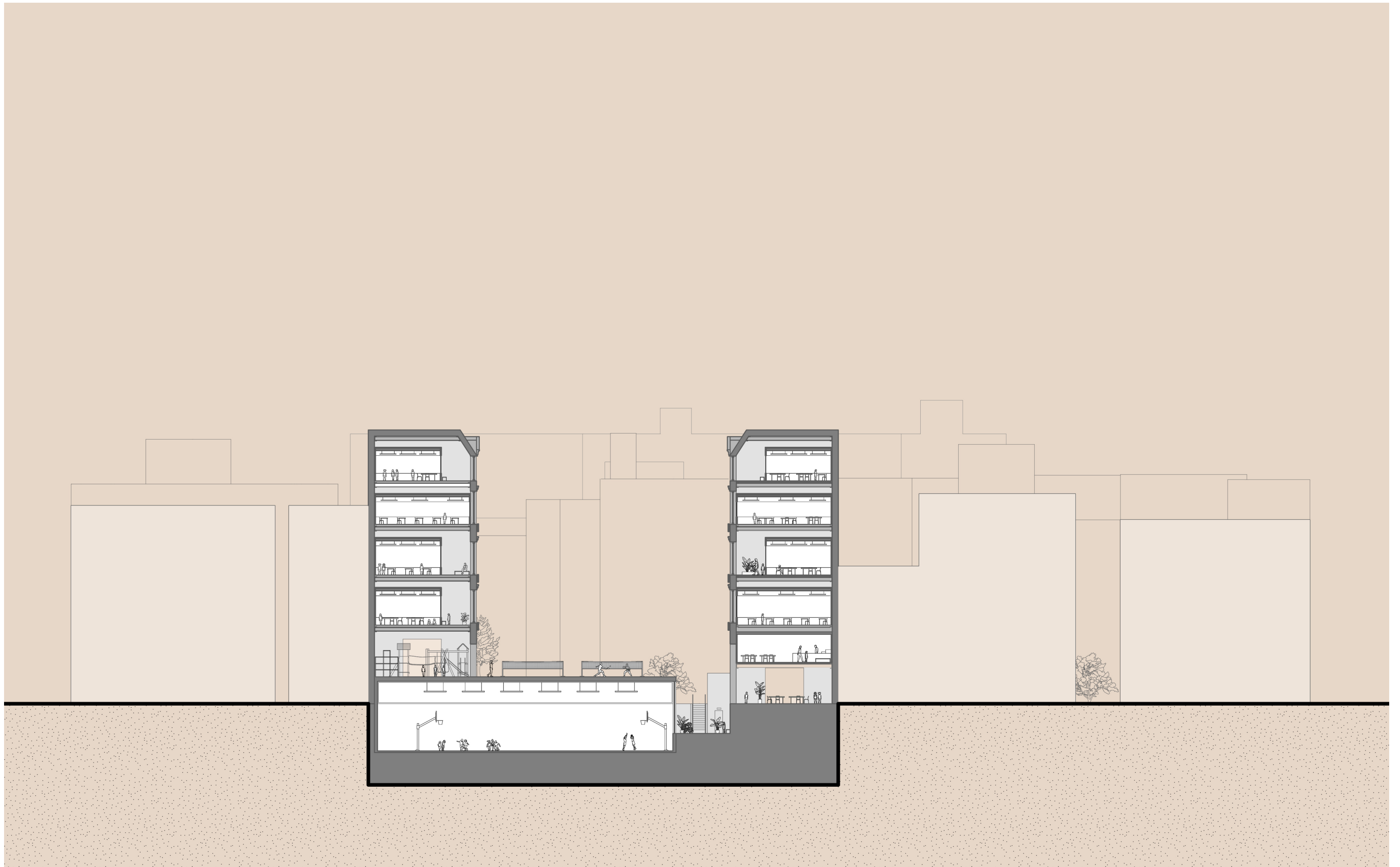


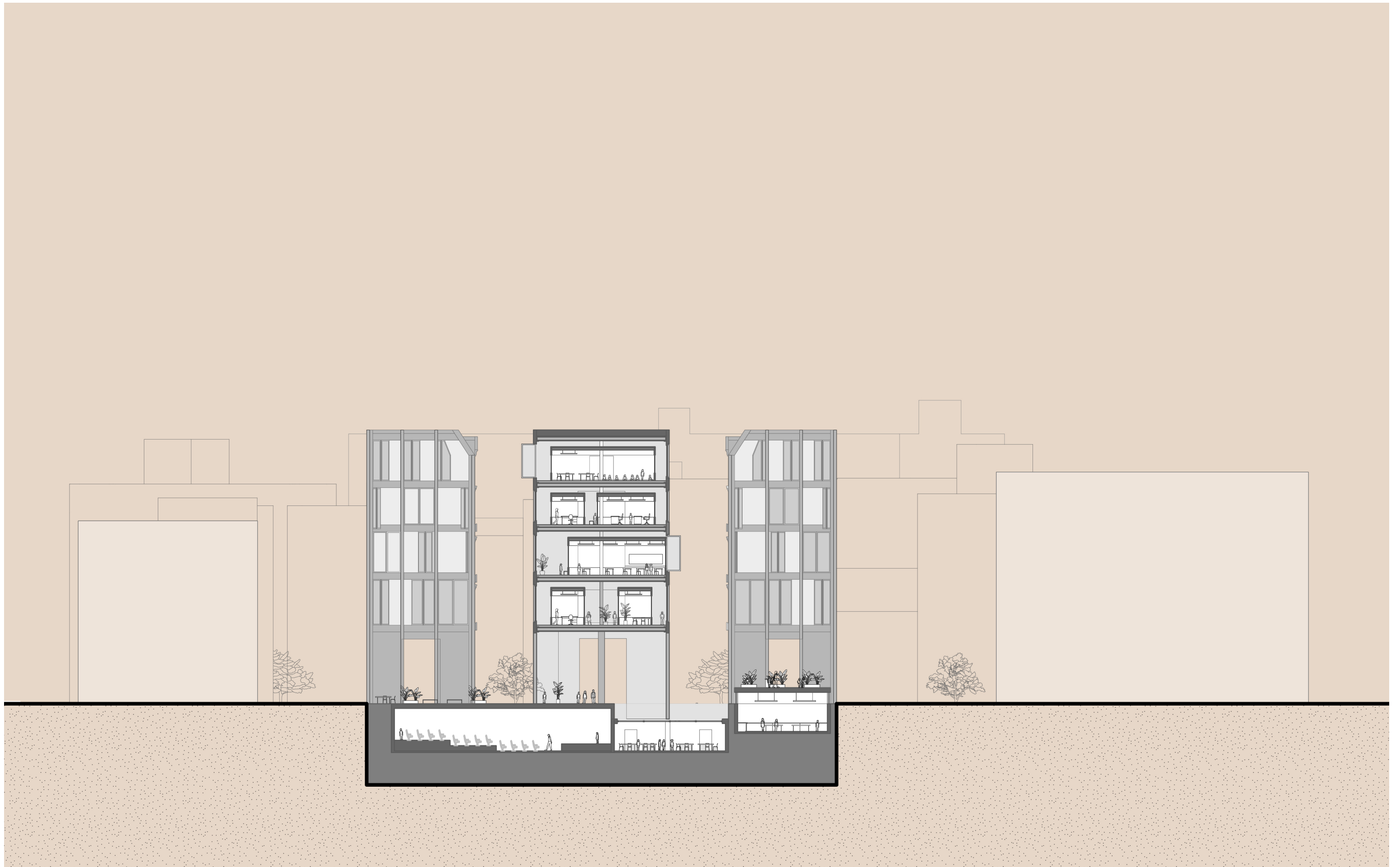


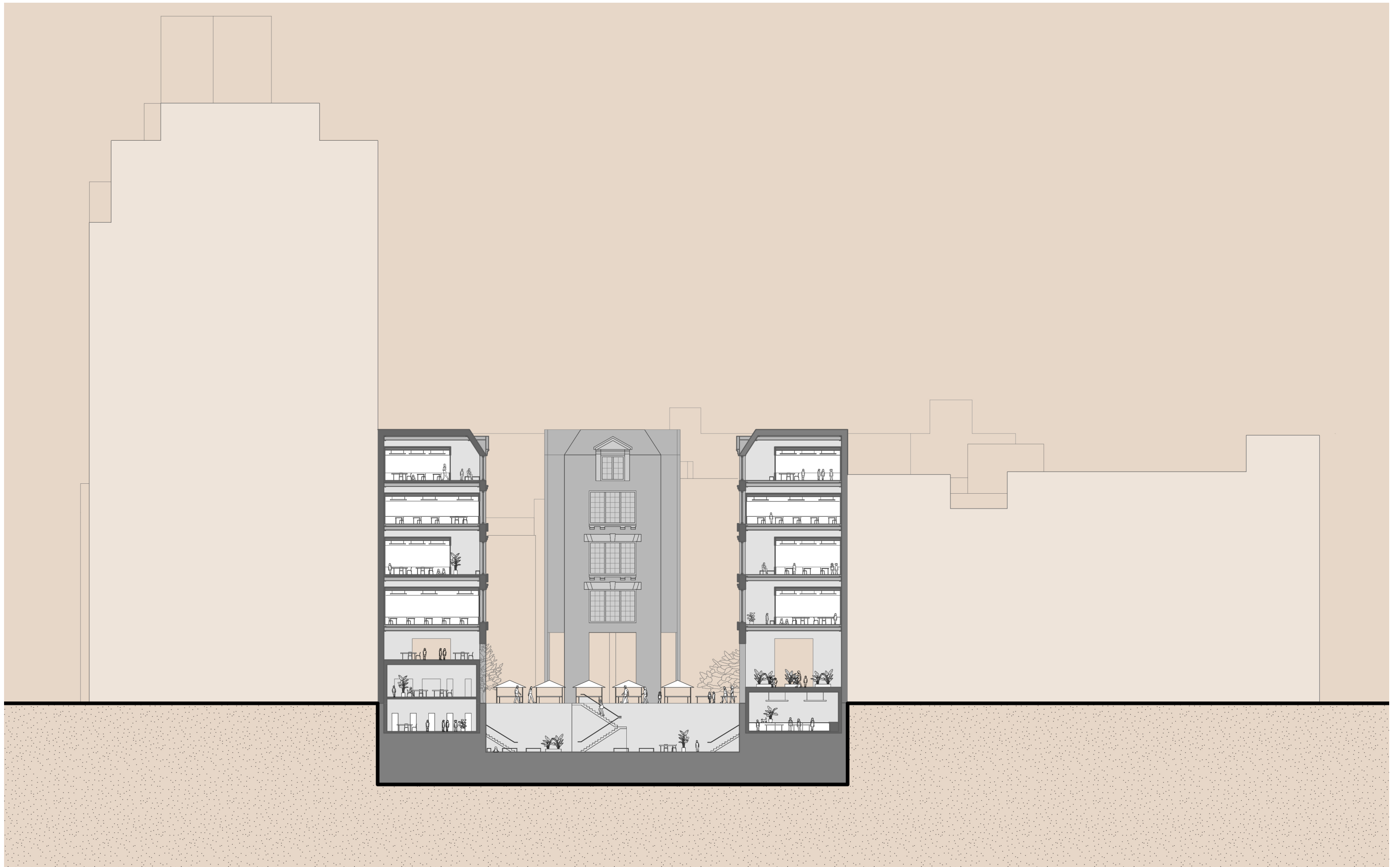


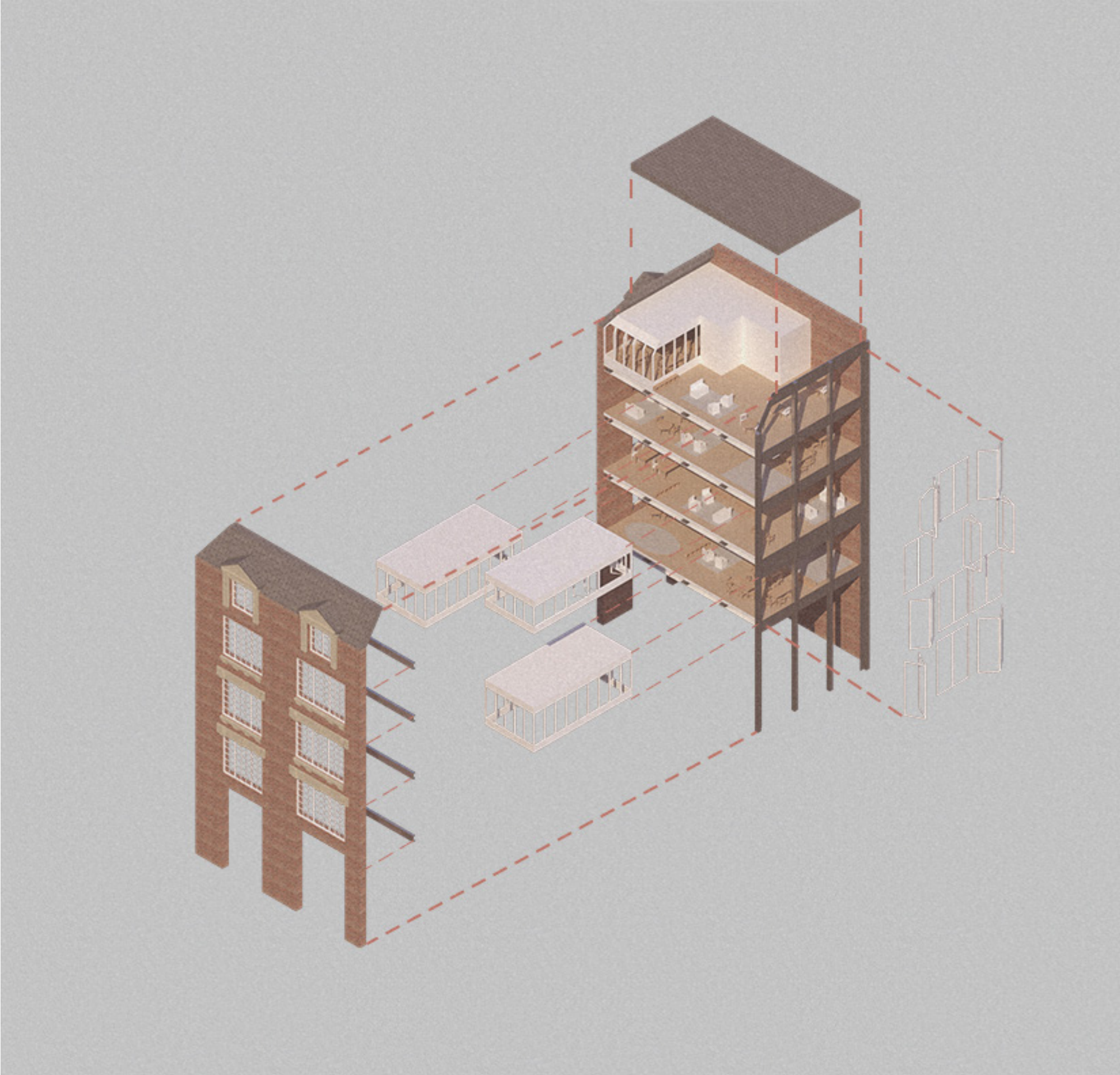


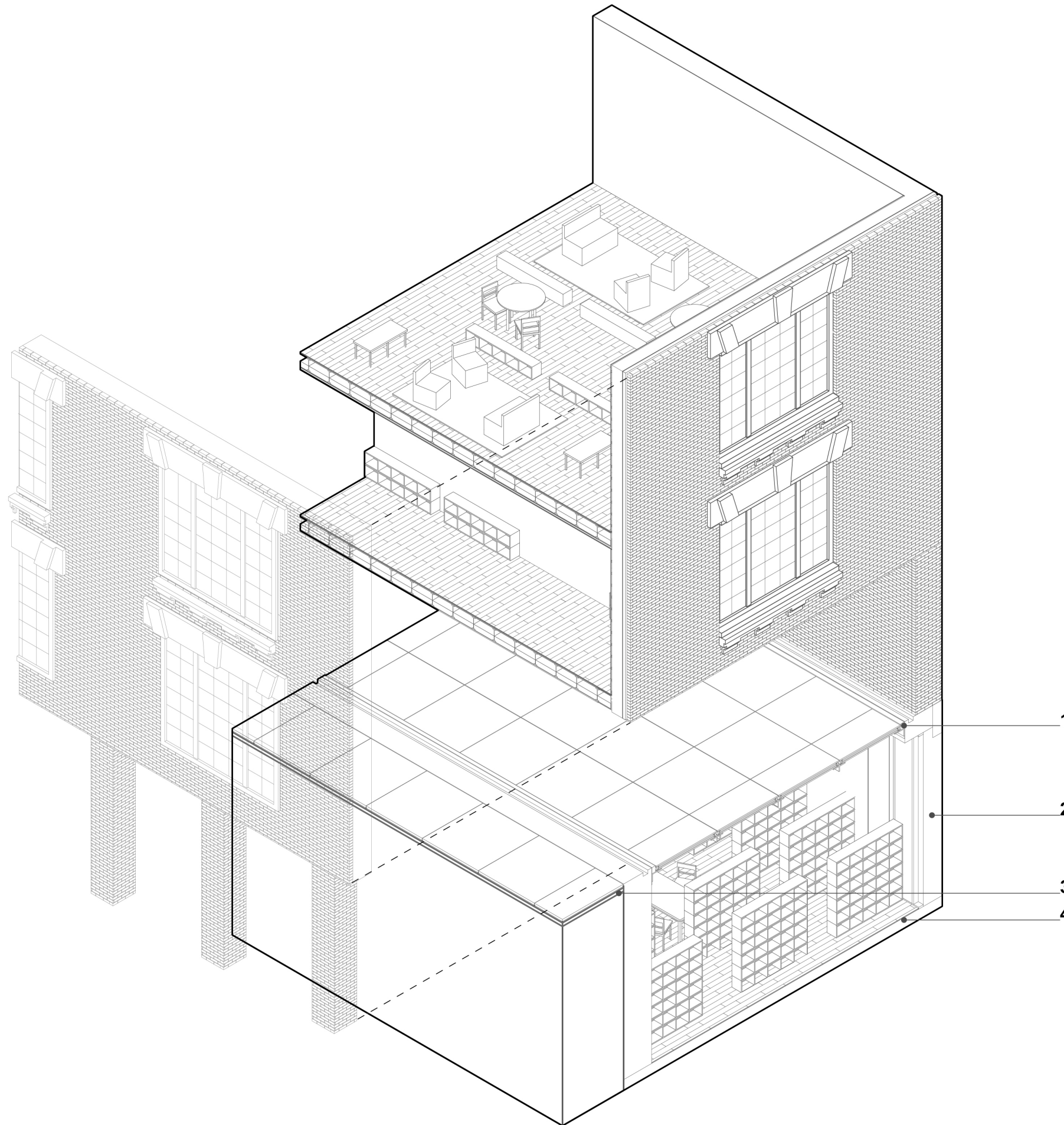












OUTSIDE

1. GLASS FLOOR
 RAIN GUTTER
 METAL FRAME
 L BRACKET
 STRUCTURAL SILICONE
 STRUCTURAL GLASS

2. BASEMENT MASONRY WALL
 CMU
 STEEL STUDS
 BATT INSULATION
 VAPOUR BARRIER
 GYPSUM BOARDS
 PAINT

3. HARDSCAPE
 6X6 CONCRETE PAVERS
 SAND
 GRAVEL
 SOIL

4. BASEMENT FLOOR
 WOOD PANELS
 NOISE BARRIER FOAM
 CONCRETE



