

# GSAPP | Summer Workshop Presentation

03.03.2023

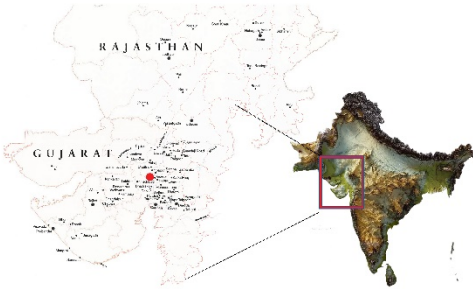
## Introduction

### Peri-Urban Water Management in Gujarat

07/17/2023 - 08/05/2023

Week One - NYC  
Week Two - India  
Week Three - India

Research and Mapping at GSAPP  
Visits to Sites in/around Ahmedabad  
Studio Work at Anant University



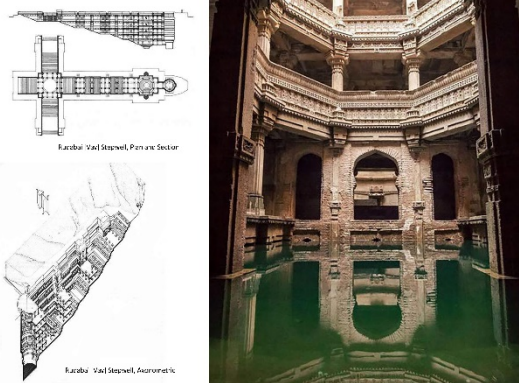
We will be traveling to the northwest of India, in an area with specific geology and significant topography.

The monsoon hits India from the Southwest, ascending along the coast and discharging intense rains when it reaches Gujarat and Rajasthan.

The red dot in the larger map on the left indicates the location of our base in Ahmedabad, around which a lot of stepwells are located, since the aquifer is accessible by excavating the earth, reaching its depth.

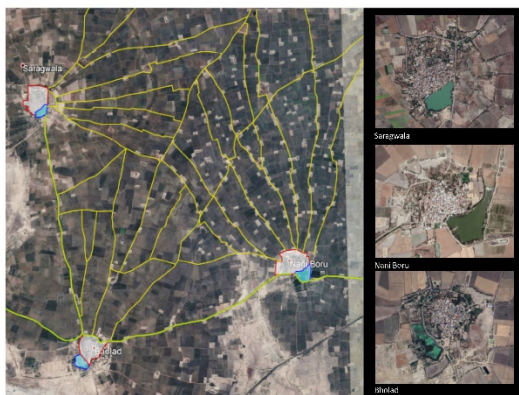
This workshop is organized in three weeks: the first one at GSAPP for research and thematic mappings, the second and third ones in India. During the second week we will visit urban sites and unique architectural works (see additional PDF of trip itinerary). We will also get exposed to aspects of Indian culture that establish ritualistic relationships with water. For the third week we have forged a relationship with Anant University, which is offering to us spaces to collaborate on shared topics, since their semester starts in mid-July.

### Image 1.



**Stepwells** are elaborate water buildings with stairs that descend from the ground into the subterranean, towards a water well to access water. (Section on the left). These underground buildings are like inverted temples that are usually 3-9 stories deep. They acted as social spaces for women to gather, for children to play and for caravans of travelers as a resting place in a semi-arid desert climate.

### Image 2.



This map shows a typical pattern of cultivation with villages evenly distributed in the landscape and each one having a rainwater collection pond called **Talavs**, identified in the blue hatch on the map. The yellow lines are pathways connecting network of irrigation, and secondary ponds to control monsoon water as it moves from one field to another.

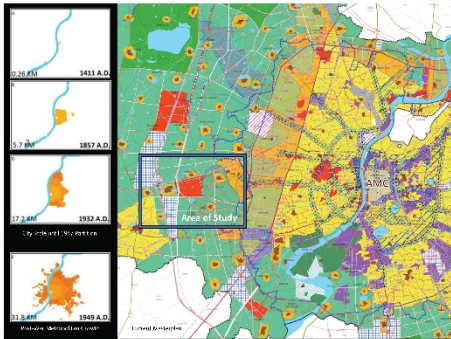
Monsoon is a time of recharging the underground aquifer and farmers have built a very intelligent system spanning a millennium around water management.

Image 3.



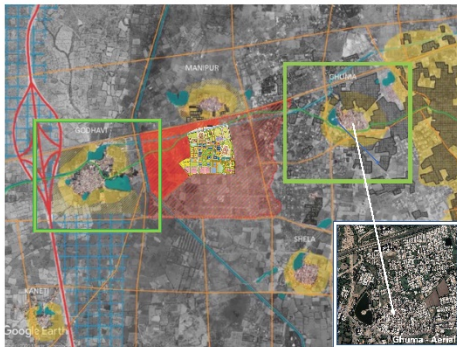
Modernity was established since the post-colonial partition of 1947 and marked by the creation of Chandigarh and influenced by Le Corbusier's rhetoric. This paradigm demonstrated the limits of Western ontology. We will visit LC's Mill Owners Association's building in Ahmedabad and other masterpieces, such as the IIM campus by Louis Kahn and several more projects by Mr. B.V. Doshi. Mr. Doshi developed a more sensitive environmental approach to architecture and won the Pritzker Prize in 2018. His *Vastu Shilpa Foundation* is a key partner in our workshop.

Image 4.



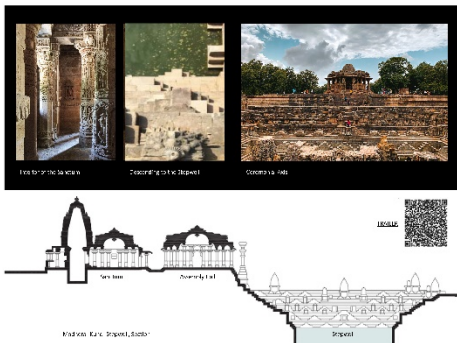
Ahmedabad's historical formation on the east of the Sabarmati River jumped to a metropolitan scale after the war, expanding towards the west. This is accelerating under an intense real-estate development. Within the current master plan, the rectangle highlights a peri-urban area of social and urban confrontation between the city and the pattern of agricultural villages. They are shown on the left as marked by yellow rings of special regulations, called "*Gamthals*."

Image 5.



The village of Ghuma, on the right, is under siege by unregulated clusters of towers and gated communities. On the left, the village of Godhavi is trapped between the new ring road under construction, and an area planned for cultural/institutional uses (in red), with the campus of Anant University, also our institutional partner, at its center. The workshop question is: how to re-integrate Gujarat's traditional water management wisdom with a new climate-sensitive notion of urban/rural dynamics?

Image 6.



Here you see another kind of a step well or a step pond called the *Kund type* fronting the Sun Temple at Modhera. The pond acts as an extension of ritualistic space. The QR Code on the right side of the section is a short video testing the integration of sketches, documentation, and video footage, to introduce the notion that historical architecture operated as an environmental apparatus.

### Outcomes

As output of this workshop each student will formulate her/his own vision for a strategically selected probe and/or a manifesto, with full consideration for their systemic and poetic dimensions. The workshop is in preparation for a Fall Advanced Studio, in collaboration with the *Miralles Foundation (Barcelona)*, who will be involved as the third active Partner of this ongoing exploration.